

- NOTES:**
- All construction shall be in accordance with the Standard Specifications for Public Works Construction 1970 Edition and Standard Drawings of the City of Riverside, Department of Public Works.
 - Location of laterals to be located in the field at the direction of the owner. Avoid conflict with proposed and/or existing facilities.
 - All laterals to be 4" Dia. and const. to the property line.

BENCH MARK
 EAB: FD BRASS DISC, STAMPED (EAB) CAPPED
 @ INTERSECTION OF VAN BUREN BLVD &
 VICTORIA AVE., F.B. 735/43, ELEV. 881.950

APPROVED BY
Howard D. Oresman 8-1-72
 CHIEF PUBLIC UTILITIES ENG. DATE

J. F. D. REFERENCE
 4016-GRADING PLAN THIS TRACT.

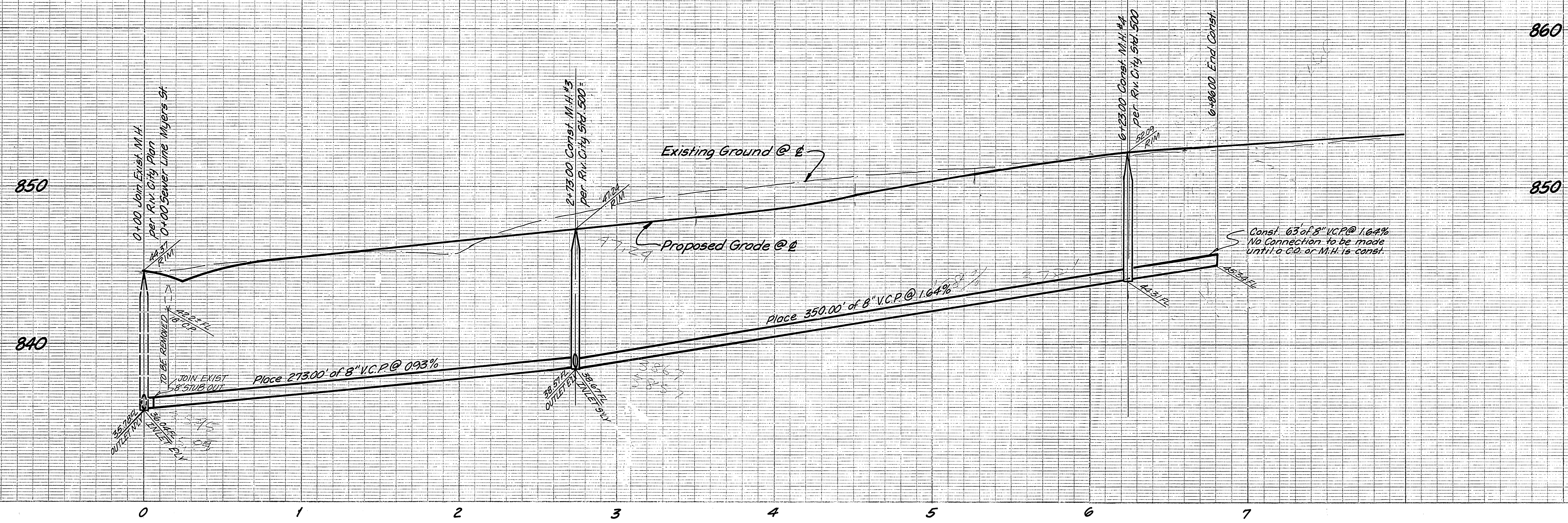
J. F. DAVIDSON ASSOCIATES
 CIVIL ENGINEERS - SURVEYORS - PLANNERS
 RIVERSIDE, CALIFORNIA
 APPROVED BY *Robert J. Sappas* DATE 7-3-72
 R.E. No. 132911
 W.O. 3115 FOR: Beruchin Enterprises F.B.

MARK	REVISIONS	APPR.	DATE

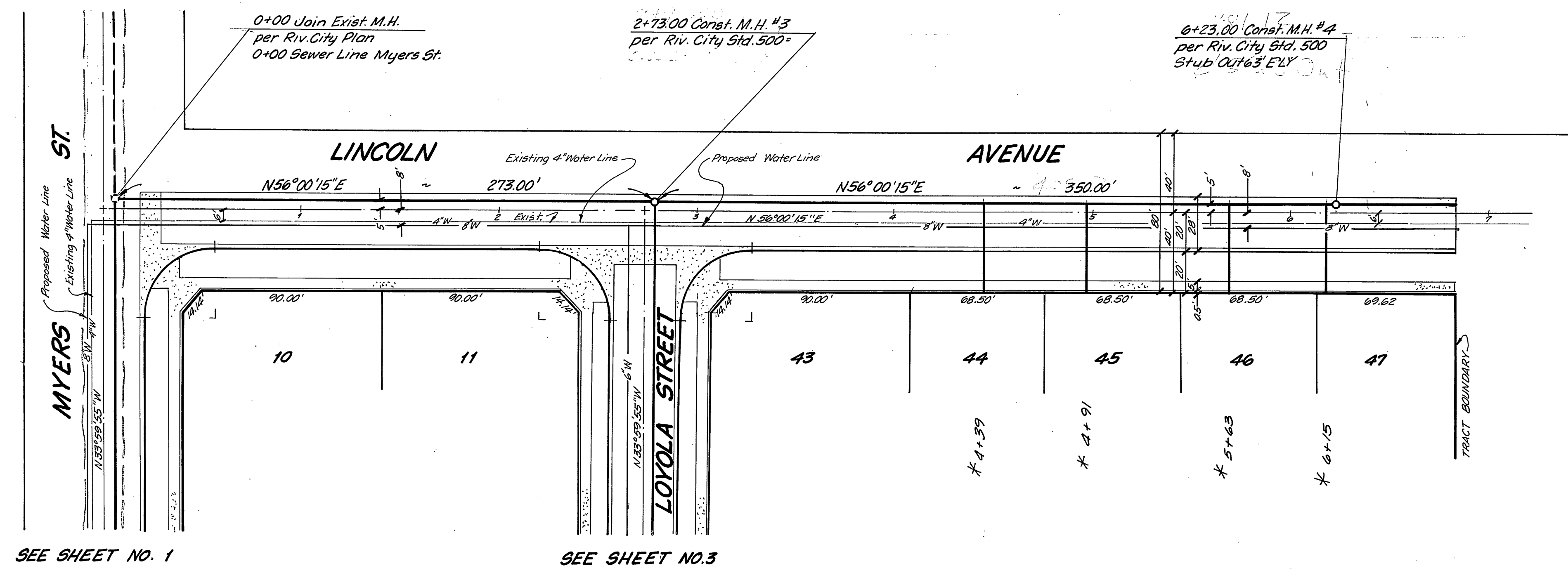
CITY OF RIVERSIDE, CALIFORNIA
 DEPARTMENT OF PUBLIC WORKS
 APPROVED BY *Paul H. Williams* DATE 8/1/72
 OFFICE ENGINEER
 PARK DEPARTMENT
 TRAFFIC DIVISION
 ASSISTANT CITY ENG.
 DATE 8/1/72

INDEXED m.d.
SEWER PLAN & PROFILE
TRACT 4556
MYERS STREET
 LINCOLN AVE. TO 711' SOUTHERLY
5-888
 SHEET 1 OF 4
 HORIZ. SCALE: 1" = 40' VERT. SCALE: 1" = 4'
 FILE NO. 4433

* AS BUILT KARL 12/18/72



NOTES:
1. Sewer Notes See Sheet No. 1



SEE SHEET NO. 1

SEE SHEET NO. 3

BENCH MARK
E.P.B. FD BRASS DISC, STAMPED (F48) CAPPED
@ INTERSECTION OF VAN BUREN BLVD. &
VICTORIA AVE., F.B. 135/88, ELEV. 881.950

APPROVED BY
Howard K. Crean 8-1-72
CHIEF PUBLIC UTILITIES ENG. DATE

J. F. DAVIDSON ASSOCIATES
CIVIL ENGINEERS - SURVEYORS - PLANNERS
RIVERSIDE, CALIFORNIA
APPROVED BY *Robert S. Kypin* DATE 2-3-72
R.E. No. 13612

MARK	REVISIONS	APPR. DATE

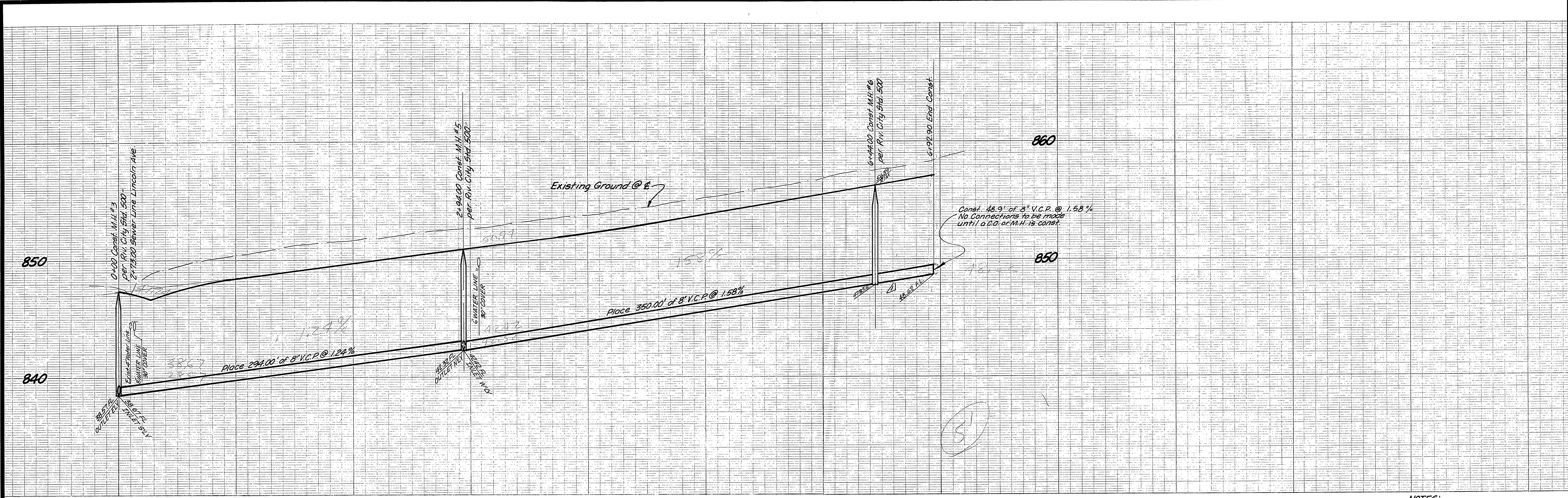
CITY OF RIVERSIDE, CALIFORNIA
DEPARTMENT OF PUBLIC WORKS
APPROVED BY *William D. Johnson*
DIRECTOR OF PUBLIC WORKS
DATE 8/17/72

SEWER PLAN & PROFILE
TRACT 4556
LINCOLN AVENUE
MYERS ST. TO 661' WESTERLY
PROJECT NO. S-888
SHEET 2 OF 4
HORIZ. SCALE: 1" = 40'
VERT. SCALE: 1" = 4'
FILE NO. 4433

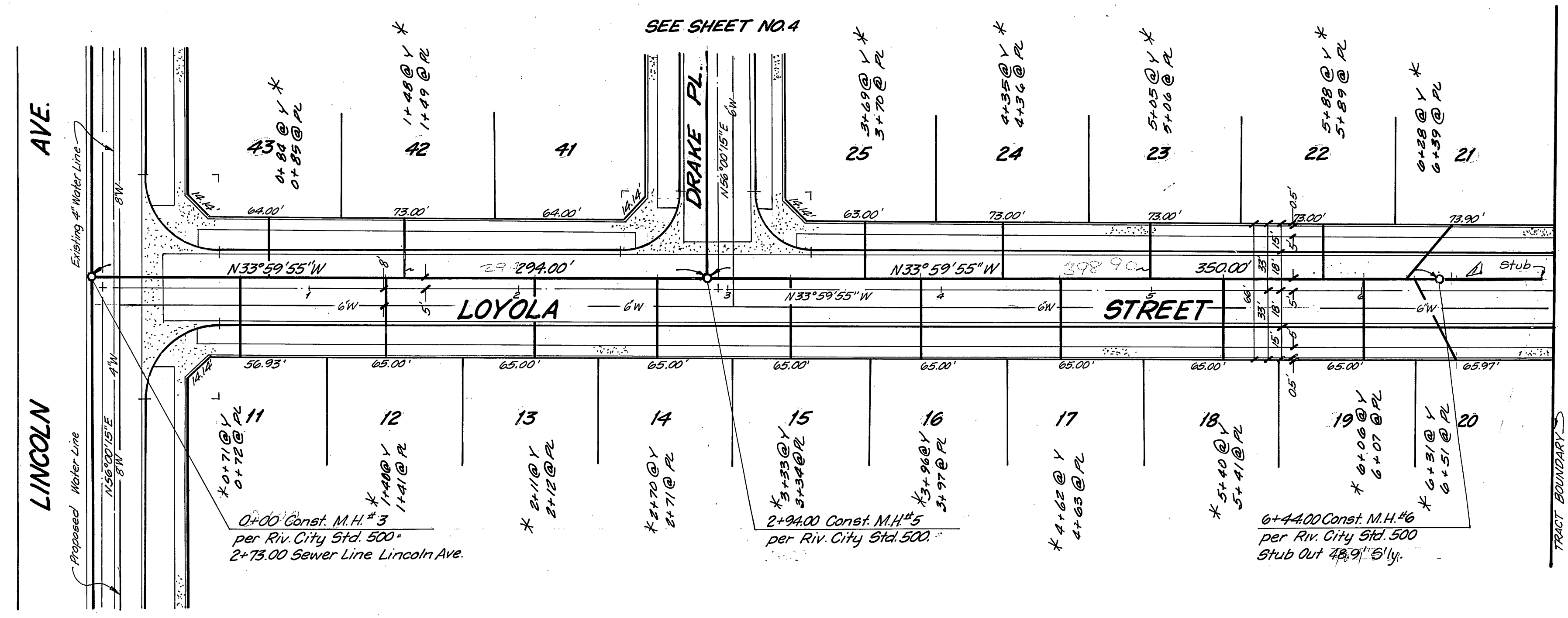
* AS BUILT KARL 12/18/72

W.O. 3/15 FOR: Borchin Enterprises F.B.

DESIGNED BY *ED* DRAWN BY *ED* CHECKED BY *AWLL*



NOTES:
1. Sewer Notes See Sheet No. 1



SEE SHEET NO. 2

BENCH MARK
EAB: FD BRASS DISC, STAMPED (EAB) CAPPED
@ INTERSECTION OF VAN BUREN BLVD. &
VICTORIA AVE., FB. 735/43, ELEV. 881.950

APPROVED BY
Howard D. Oresman 8-1-72
CHIEF PUBLIC UTILITIES ENGR. DATE

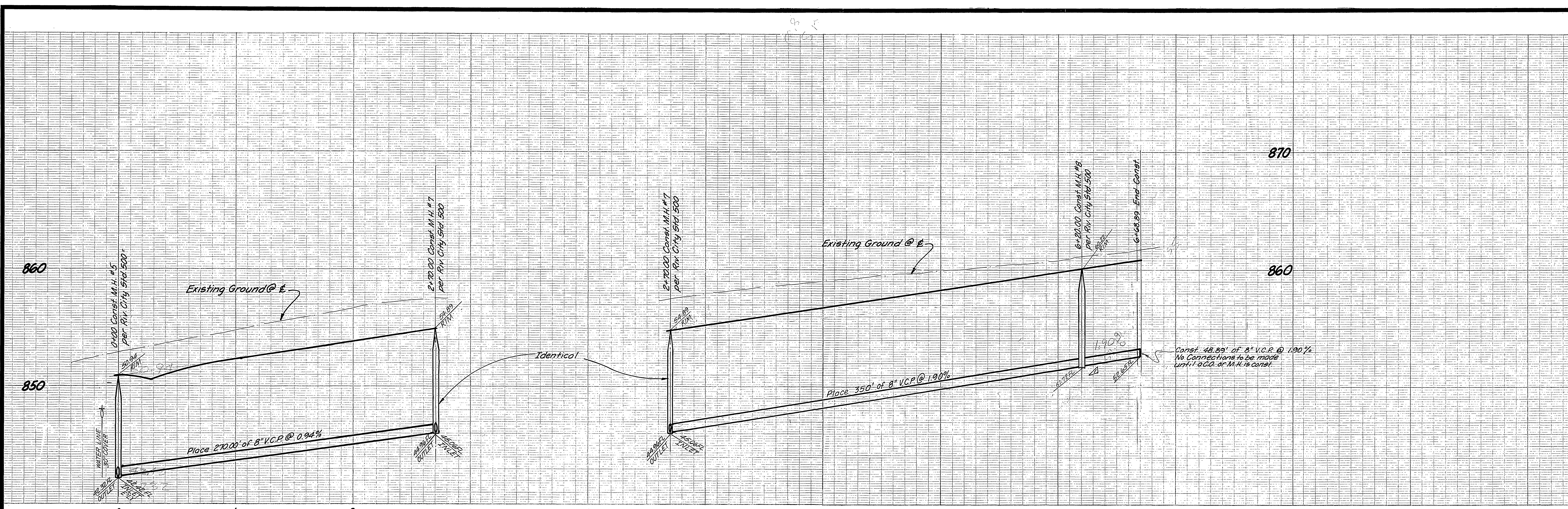
J. F. DAVIDSON ASSOCIATES
CIVIL ENGINEERS - SURVEYORS - PLANNERS
RIVERSIDE, CALIFORNIA
APPROVED BY *Robert D. Gumpin* DATE 7-3-72
R.E. No. 13683
W.O. 3115 FOR: Beruchin Enterprises F.B.

CITY OF RIVERSIDE, CALIFORNIA
DEPARTMENT OF PUBLIC WORKS
APPROVED BY *William D. Hardin*
DIRECTOR OF PUBLIC WORKS
DATE 8/17/72

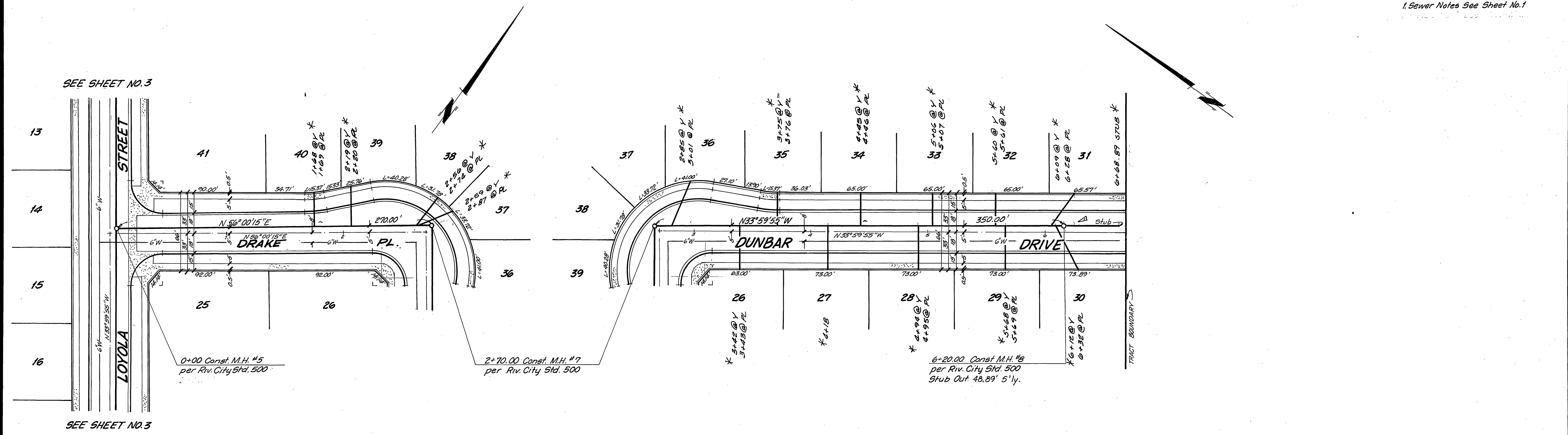
APPROVED BY *W. J. Gille*
OFFICE ENGINEER
TRAFFIC DIVISION
DATE 8/15/72

SEWER PLAN & PROFILE
TRACT 4556
LOYOLA STREET
LINCOLN AVE. TO 720' SOUTHERLY
PROJECT NO. 5-888
SHEET 3 OF 4
FILE NO. 4433
HORIZ. SCALE: 1" = 40'
VERT. SCALE: 1" = 4'

* AS BUILT KABL 12/18/72



NOTES:
1. Sewer Notes See Sheet No. 1



BENCH MARK
EAB: PD BRASS DIBC STAMPED (EAB) CAPPED
@ INTERSECTION OF VAN BUREN BLVD &
VICTORIA AVE., TB. 735/43, ELEV. 881.950.

APPROVED BY
Howard A. Creamer 8-1-72
CHIEF PUBLIC UTILITIES ENG. DATE

J. F. DAVIDSON ASSOCIATES
CIVIL ENGINEERS - SURVEYORS - PLANNERS
RIVERSIDE, CALIFORNIA
APPROVED BY *Robert D. Kopp* DATE 7-3-72
R.E. No. 13699

DESIGNED BY *Ed* DRAWN BY *Ed* CHECKED BY *AWLL*

CITY OF RIVERSIDE, CALIFORNIA
DEPARTMENT OF PUBLIC WORKS
APPROVED BY *William S. Hardin*
DIRECTOR OF PUBLIC WORKS
DATE 8/17/72

* AS BUILT EARL 12/18/72
SEWER PLAN & PROFILE
TRACT 4556
DUNBAR STREET
DRAKE TO 900' S BY
DRAKE PLACE
LOYOLA TO DUNBAR
PROJECT NO. S-888
SHEET 4 OF 4
FILE NO. 4433
HORIZ. SCALE: 1" = 40'
VERT. SCALE: 1" = 4'