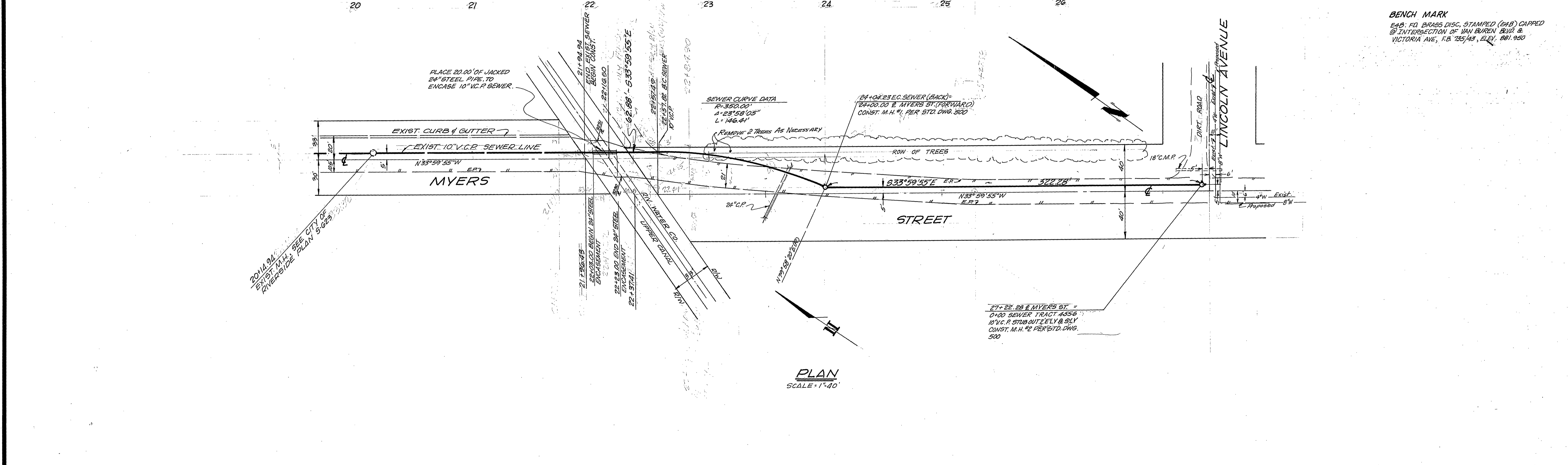


**PROFILE**  
 HORIZ. 1" = 40'  
 SCALE VERT. 1" = 4'



**PLAN**  
 SCALE 1" = 40'

**BENCH MARK**  
 448: FD BRASS DISC, STAMPED (B48) CAPPED  
 @ INTERSECTION OF VAN BUREN BLVD &  
 VICTORIA AVE, F.B. 135/43, ELEV. 891.950

AS BUILT 2-5-73 BDM  
 (NO CHANGES)

APPROVED BY: <i>Howard L. Oream</i> 8-1-72 RIVERSIDE WATER CO. DATE	<b>J.F.D. REFERENCE</b> TRACT 4556 4410 - GRADING PLAN 4433 - STREET-SEWER-UTILITY-SI LIGHT	<b>J. F. DAVIDSON ASSOCIATES</b> CIVIL ENGINEERS - SURVEYORS - PLANNERS RIVERSIDE, CALIFORNIA APPROVED BY <i>Robert J. Johnson</i> DATE 7-3-72 R.E. No. 19649	CITY OF RIVERSIDE, CALIFORNIA DEPARTMENT OF PUBLIC WORKS APPROVED BY <i>William D. Gardner</i> DIRECTOR OF PUBLIC WORKS DATE 8/17/72	<b>SEWER PLAN &amp; PROFILE</b> <b>MYERS STREET SEWER</b> EXTENSION 600' N'LY OF LINCOLN TO LINCOLN FOR TR. 4556	PROJECT NO. <b>5-889</b> SHEET 1 OF 1 FILE NO. 4433
APPROVED BY: <i>Howard L. Oream</i> 8-1-72 CHIEF PUBLIC UTILITIES ENG. DATE		W.O. 2115 FOR PORUCHIN ENTERPRISES F.B. 136/87	DESIGNED BY <i>AW</i> DRAWN BY <i>BP</i> CHECKED BY <i>AWL</i>	HORIZ. SCALE: 1" = 40' VERT. SCALE: 1" = 4'	