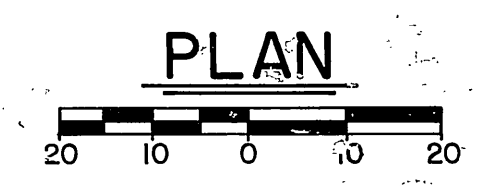
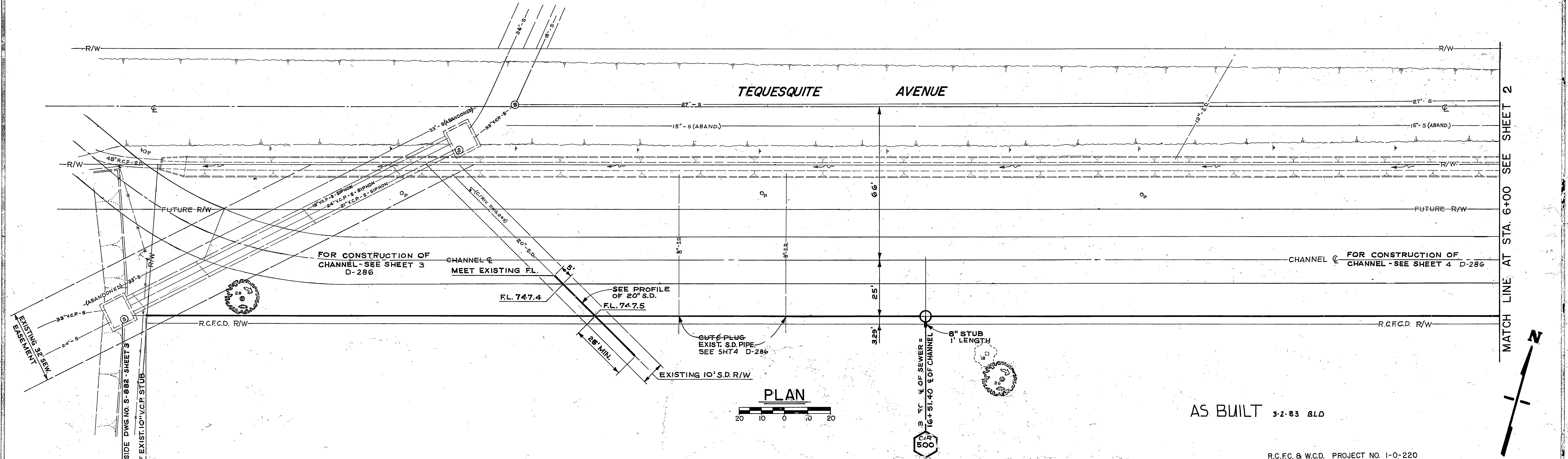
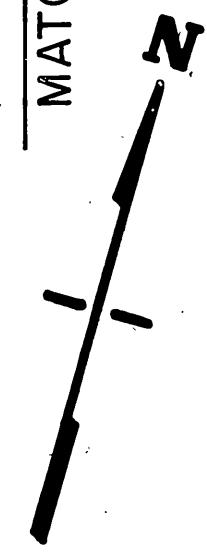


BENCH MARK 759.84  
 C.P. NO. 10 NAIL & FLASH & TAG  
 NORTH EDGE OF EXISTING  
 CHANNEL.

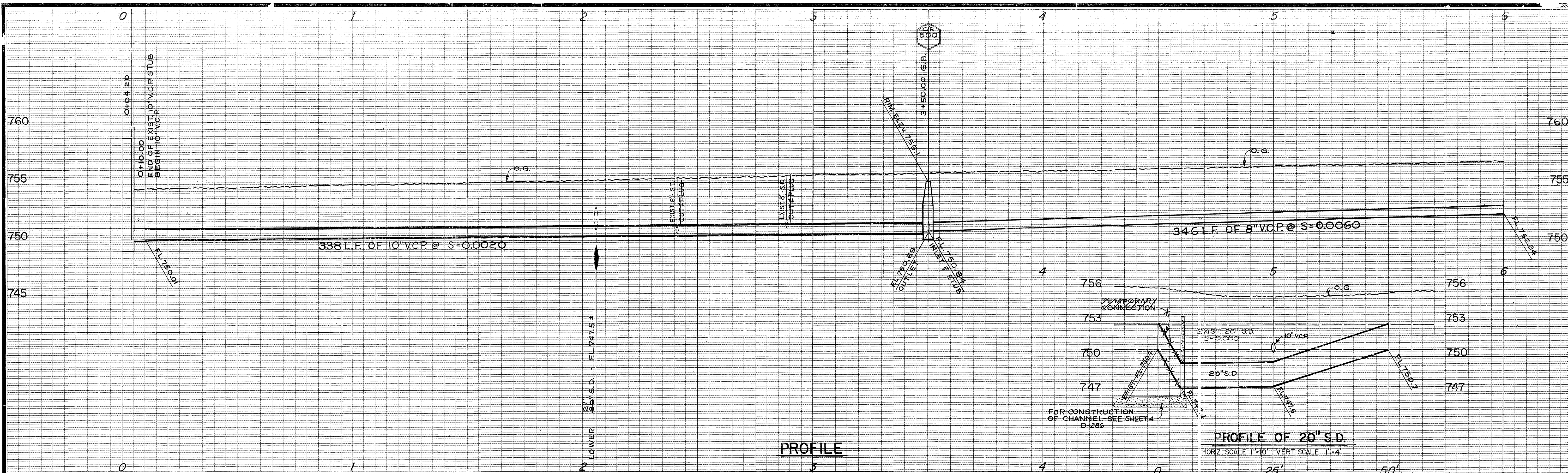


AS BUILT 3-2-83 BLD

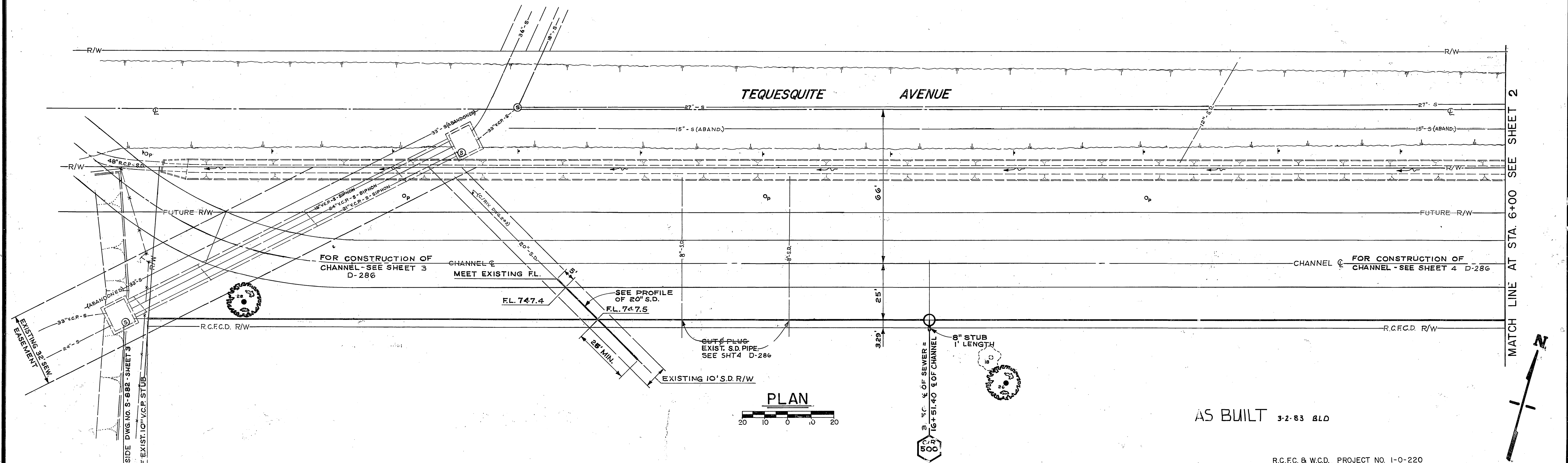
MATCH LINE AT STA. 6+00 SEE SHEET 2



CITY OF RIVERSIDE, CALIFORNIA DEPARTMENT OF PUBLIC WORKS		<b>BOX SPRINGS DRAIN</b> <b>STAGE I</b> SEWER RELOCATIONS		ACCOUNT NO. 597 DRAWING NUMBER <b>S-890</b>
APPROVED BY PRINCIPAL ENGINEER <i>[Signature]</i>	BY DATE <i>[Signature]</i> 7/19/83	APPROVED BY DIRECTOR OF PUBLIC WORKS <i>[Signature]</i>	1970 STORM DRAIN BOND ISSUE PROJECT NO. 6 SHEET 1 OF 4	
DESIGNED BY RAC DRAWN BY RAC CHECKED BY <i>[Signature]</i>		HORIZ. SCALE: 1" = 20' VERT. SCALE: 1" = 4'		



BENCH MARK 759.84  
 C.P. NO. 10" NAIL & FLASH & TAG  
 NORTH EDGE OF EXISTING  
 CHANNEL.



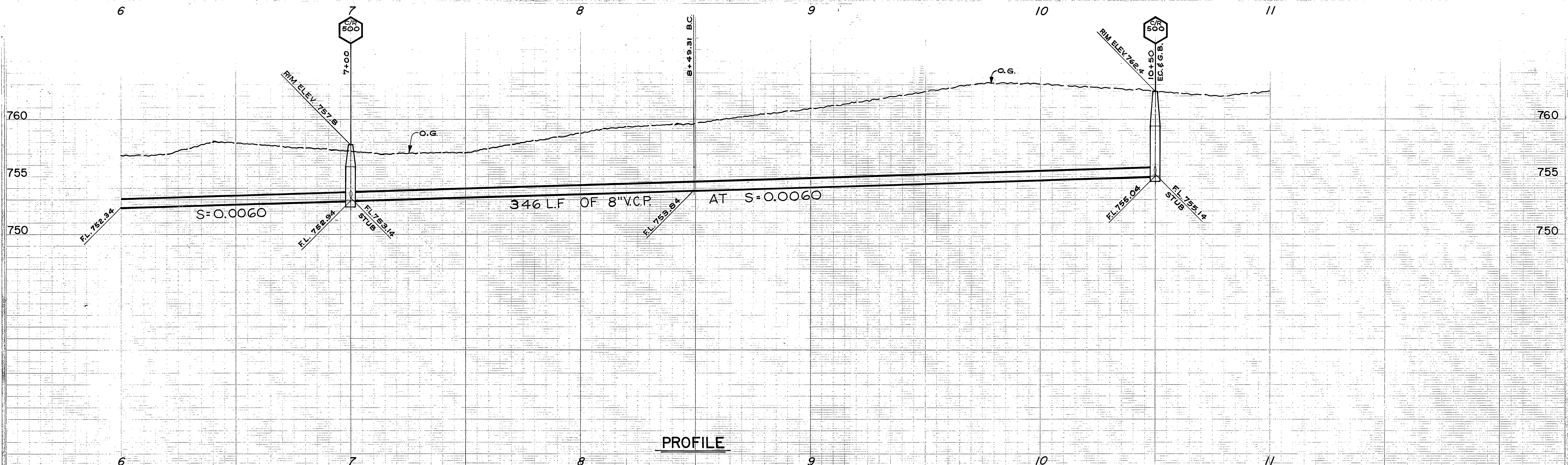
MATCH LINE AT STA. 6+00 SEE SHEET 2

AS BUILT 3-2-83 BLD

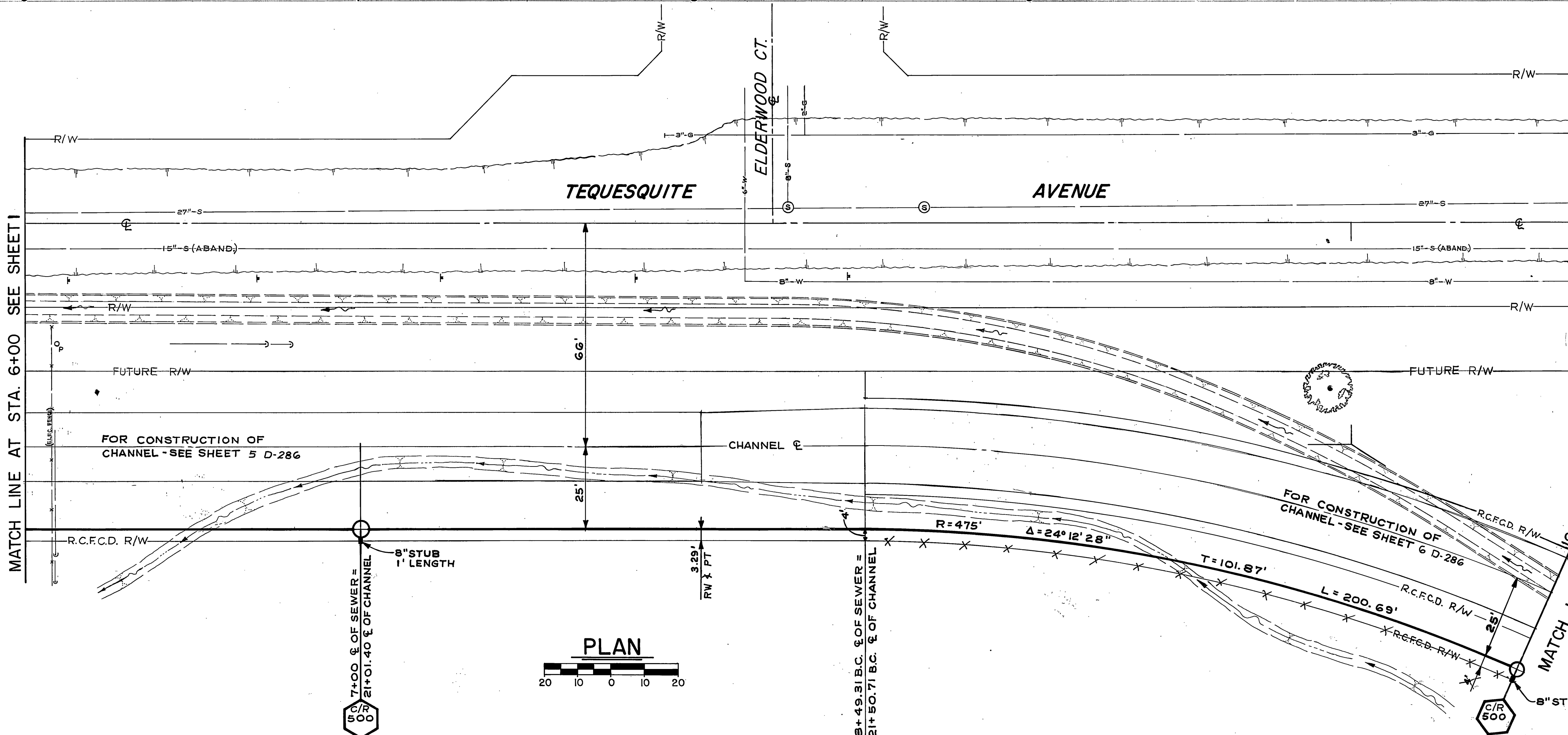
R.C.F.C. & W.C.D. PROJECT NO. 1-0-220

0+00 SEE CITY OF RIVERSIDE DWG. NO. S-882 SHEET 3  
 0+10.00 END OF EXIST. 10\"/>

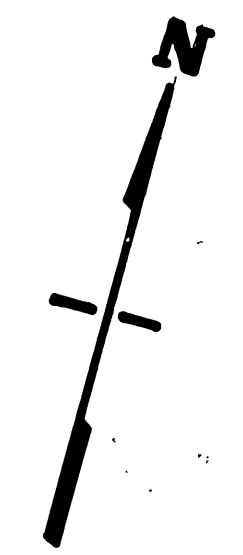
CITY OF RIVERSIDE, CALIFORNIA DEPARTMENT OF PUBLIC WORKS		BOX SPRINGS DRAIN STAGE I SEWER RELOCATIONS		ACCOUNT NO. 597 DRAWING NUMBER <b>S-890</b>
APPROVED BY PRINCIPAL ENGINEER <i>[Signature]</i>	BY DATE <i>[Signature]</i> 9/10/72	APPROVED BY DIRECTOR OF PUBLIC WORKS	DATE	1970 STORM DRAIN 90ND ISSUE PROJECT NO. 6 SHEET 1 OF 4
MARK DESIGNED BY <i>[Signature]</i>	REVISIONS DRAWN BY <i>[Signature]</i>	APPR. DATE CHECKED BY <i>[Signature]</i>	TRAFFIC DIVISION CHIEF P. W. ENGR.	HORIZ. SCALE: 1" = 20' VERT. SCALE: 1" = 4'



BENCH MARK 753.84  
 C.P. NO. 10 NAIL & FLASH & TAG  
 NORTH EDGE OF EXISTING  
 CHANNEL.

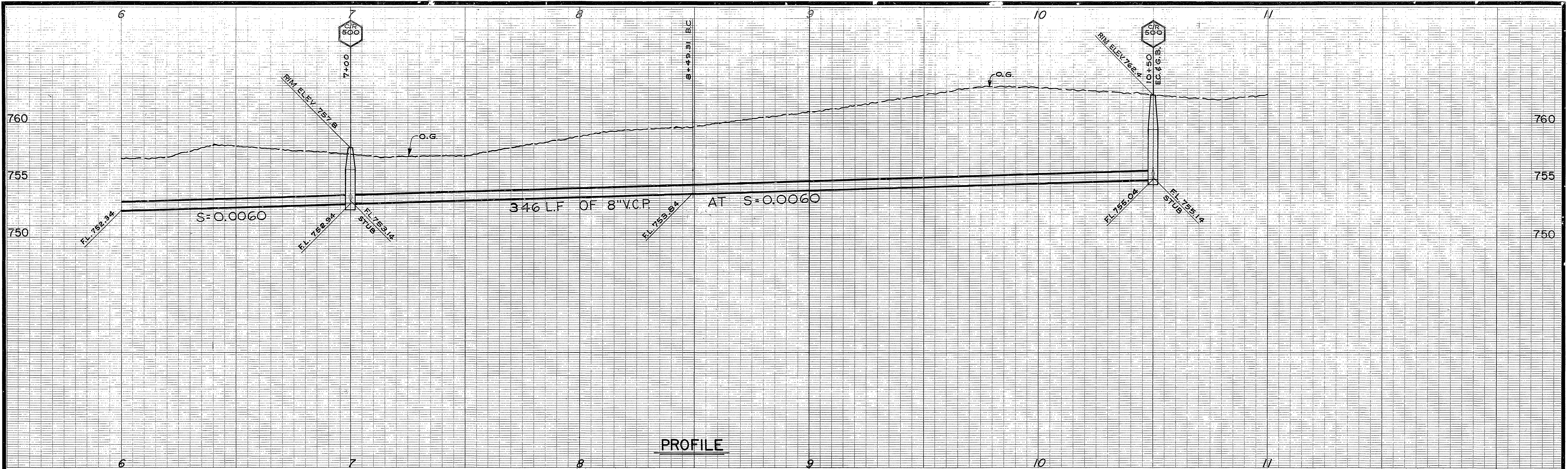


AS BUILT 3-2-83 G.L.D.



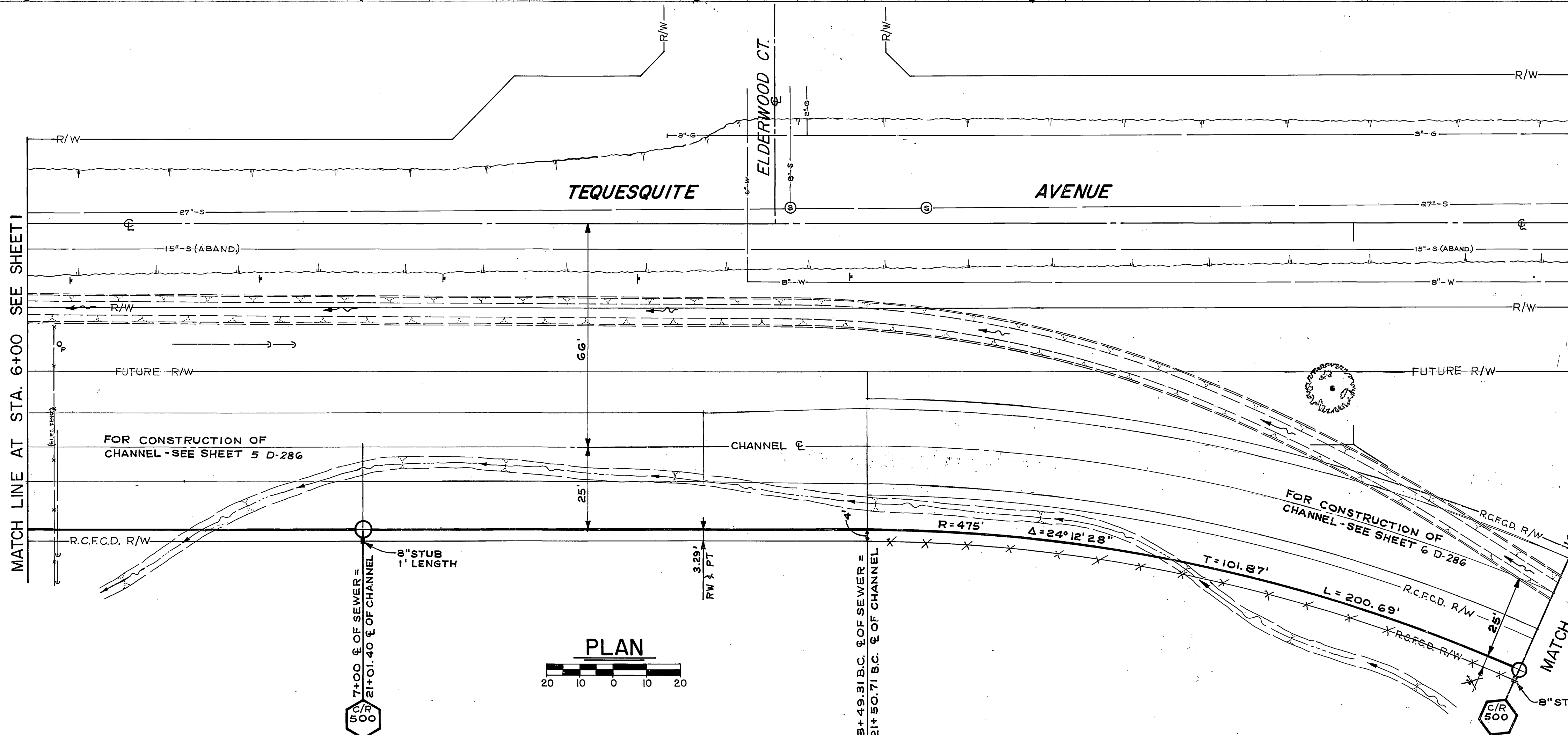
R.C.F.C. & W.C.D. PROJECT NO. 1-0-220

CITY OF RIVERSIDE, CALIFORNIA DEPARTMENT OF PUBLIC WORKS		<b>BOX SPRINGS DRAIN</b> <b>STAGE I</b> SEWER RELOCATIONS		ACCOUNT NO. 597 DRAWING NUMBER <b>S-890</b>
APPROVED BY PRINCIPAL ENGINEER <i>[Signature]</i>	BY DATE 9/2/78	APPROVED BY DIRECTOR OF PUBLIC WORKS <i>[Signature]</i>	1970 STORM DRAIN BOND ISSUE PROJECT NO. 6	SHEET <b>2</b> OF <b>4</b>
DESIGNED BY <i>RAD</i> DRAWN BY <i>JPC</i> CHECKED BY <i>DCM</i>	APPR. DATE 8-30-78	DATE <i>8-30-78</i>	HORIZ. SCALE: 1" = 20' VERT. SCALE: 1" = 4'	

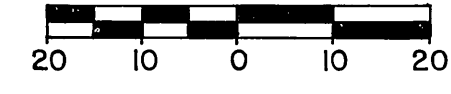


PROFILE

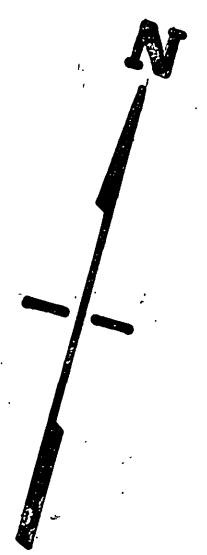
BENCH MARK 755.84  
C.P. NO. 10 NAIL & FLASH & TAG  
NORTH EDGE OF EXISTING  
CHANNEL.



PLAN

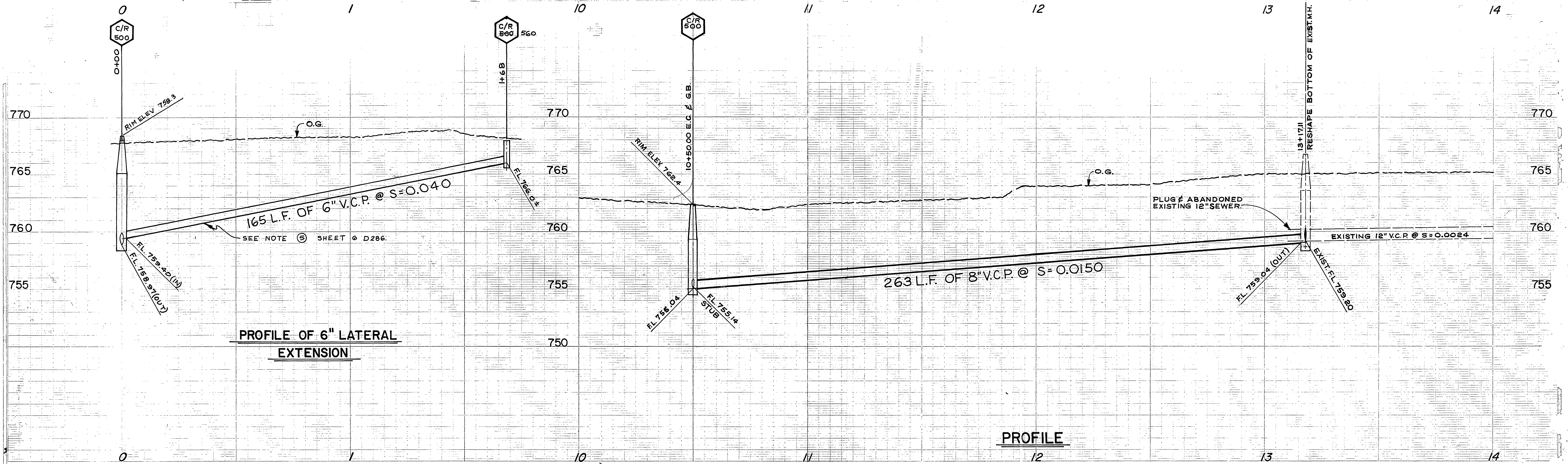


AS BUILT 3-2-83 A.L.O.



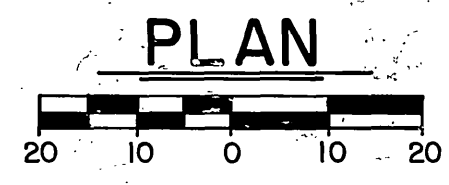
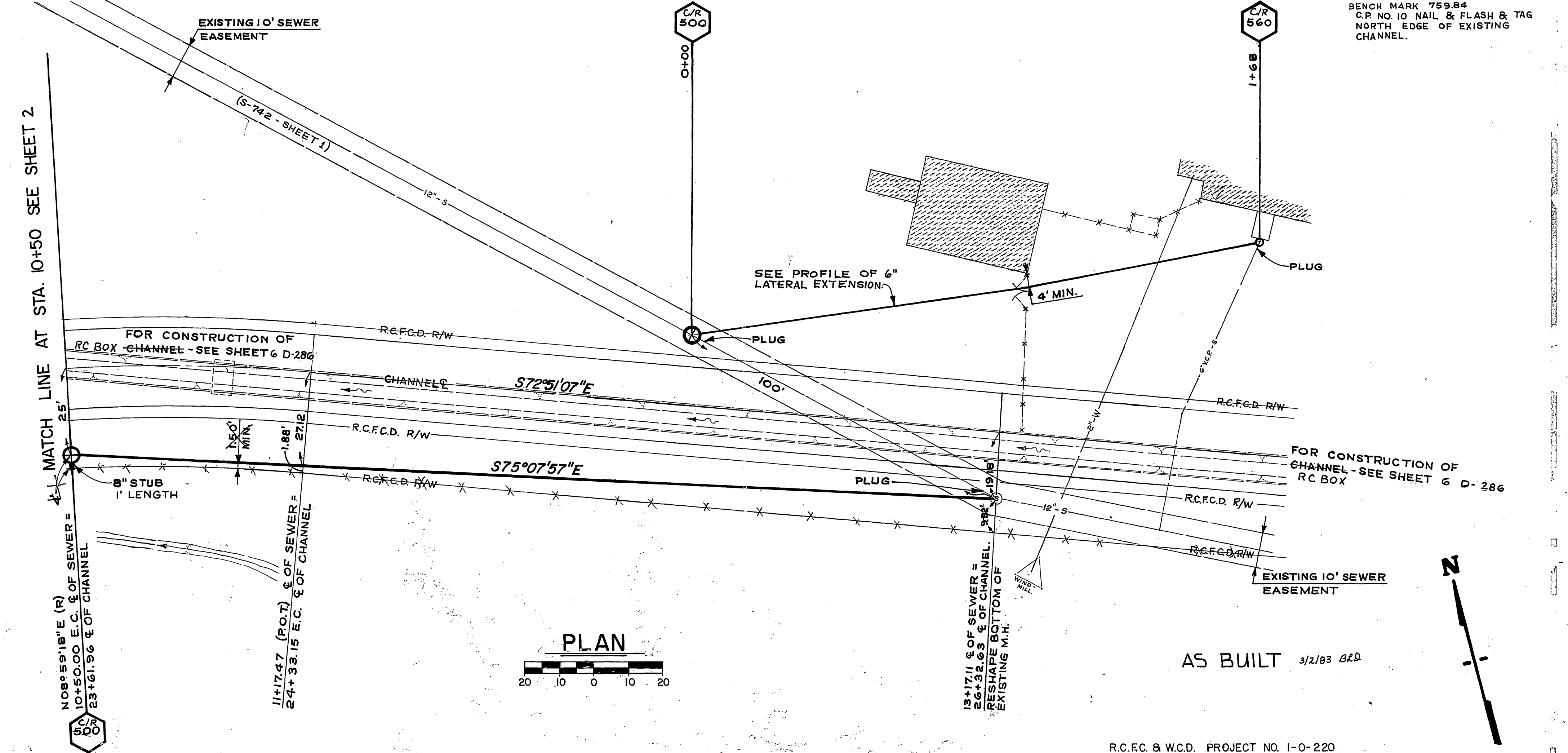
CITY OF RIVERSIDE, CALIFORNIA DEPARTMENT OF PUBLIC WORKS		ACCOUNT NO. 597 DRAWING NUMBER <b>S-890</b>
APPROVED BY PRINCIPAL ENGINEER PARK DEPARTMENT TRAFFIC DIVISION CHIEF P. W. ENGR.	BY DATE [Signature] 7/31/77	APPROVED BY DIRECTOR OF PUBLIC WORKS [Signature]
DESIGNED BY: J.A.P. DRAWN BY: J.P.C. CHECKED BY: J.P.C.	APPR. DATE [Signature]	DATE [Signature]
HORIZ. SCALE: 1" = 20' VERT. SCALE: 1" = 4'		1970 STORM DRAIN BOND ISSUE PROJECT NO. 6 SHEET 2 OF 4

R.C.F.C. & W.C.D. PROJECT NO. I-O-220



PROFILE OF 6" LATERAL EXTENSION

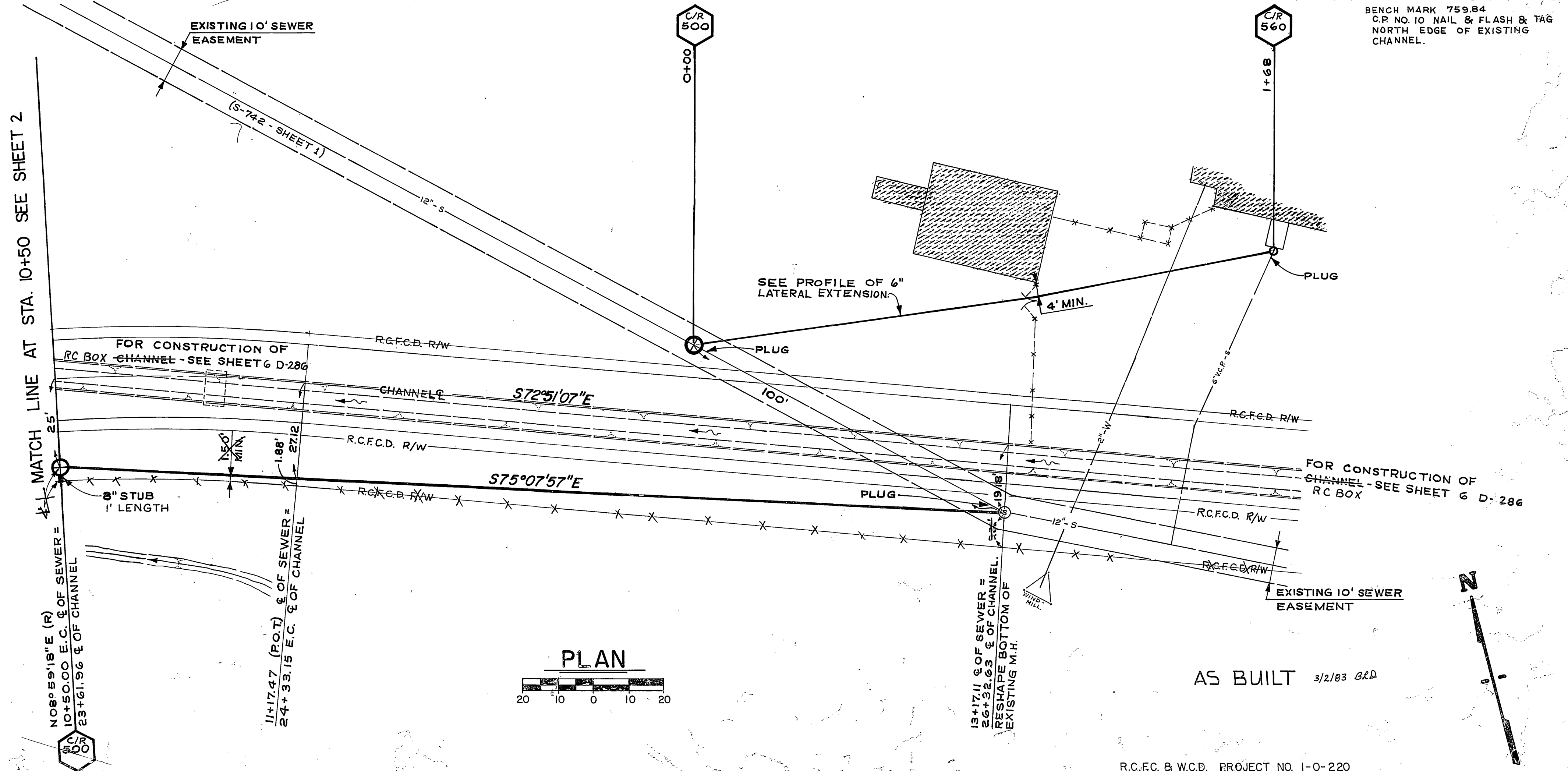
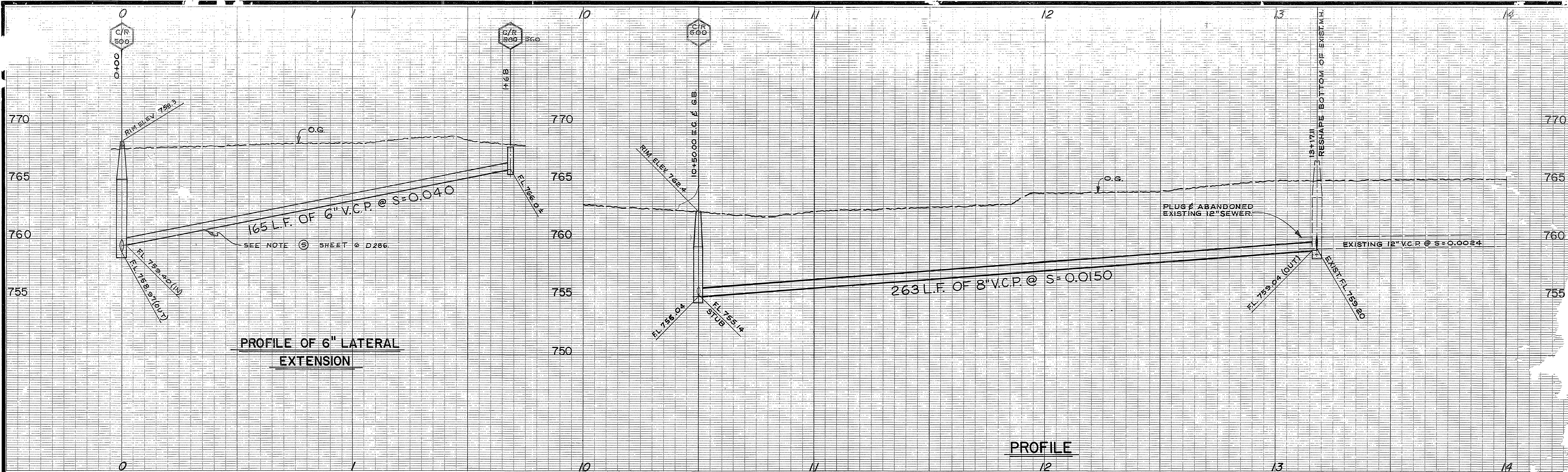
PROFILE



PLAN

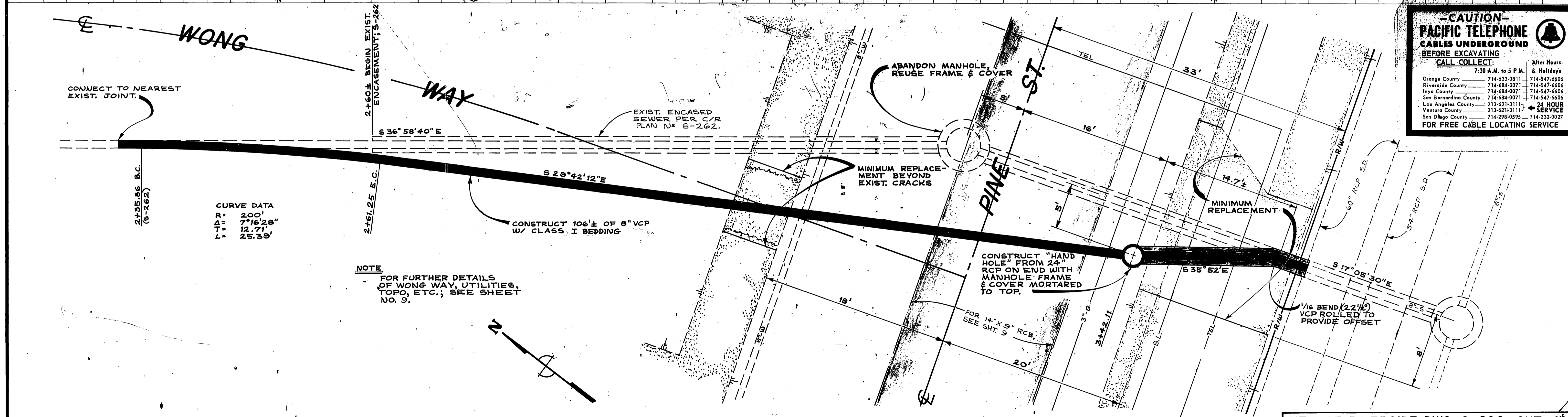
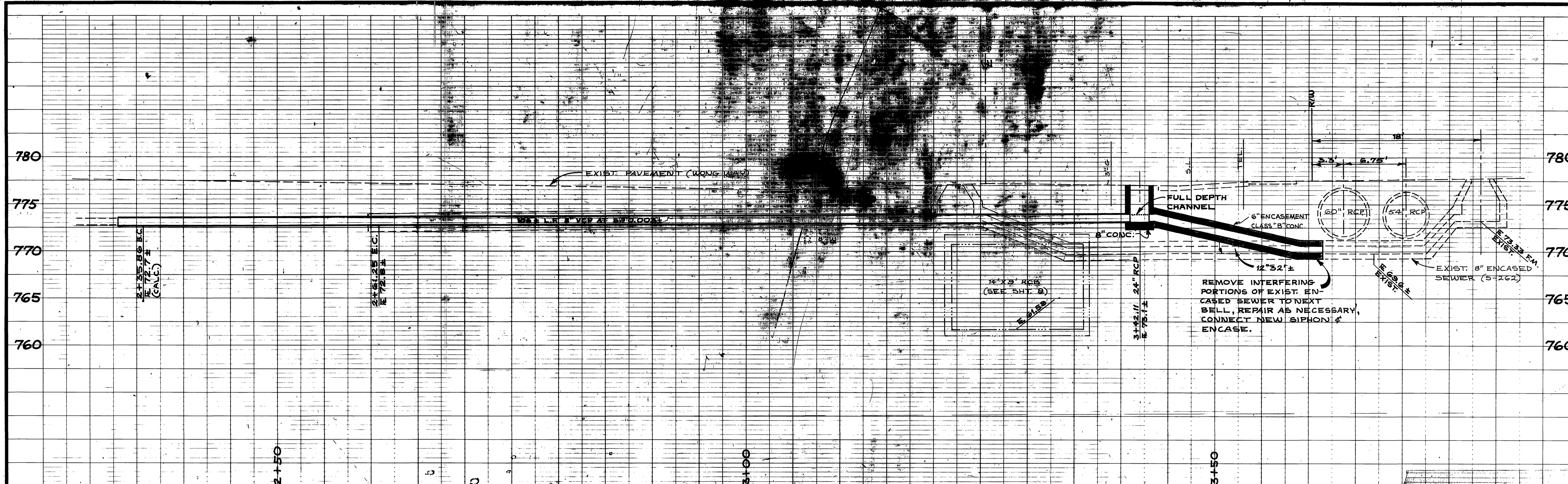
AS BUILT 3/2/83 BLD

CITY OF URSIDE, CALIFORNIA DEPARTMENT OF PUBLIC WORKS		R.C.E.C. & W.C.D. PROJECT NO. I-0-220 <b>BOX SPRINGS DRAIN</b> <b>STAGE I</b> SEWER RELOCATIONS		ACCOUNT NO. 597 DRAWING NUMBER <b>S-890</b>
DESIGNED BY CHECKED BY	DATE PERMIT NO.	DRAWN BY DATE	ISSUE PROJECT NO. 6	SHEET 3 OF 4



R.C.F.C. & W.C.D. PROJECT NO. I-0-220		<b>BOX SPRINGS DRAIN</b> <b>STAGE I</b> SEWER RELOCATIONS		ACCOUNT NO. 597 DRAWING NUMBER <b>S-890</b>
1970 STORM DRAIN BOND ISSUE PROJECT NO. 6		SHEET 3		4

C/O. SHERSIDE CALIFORNIA DEPART. PUBLIC WORKS  
 APPROVED BY: [Signature]  
 DATE: 3/8/83  
 CHECKED BY: [Signature]



**CAUTION-  
PACIFIC TELEPHONE  
CABLES UNDERGROUND  
BEFORE EXCAVATING**

CALL COLLECT:

After Hours  
7:30 A.M. to 5 P.M. & Holidays

Orange County 714-633-0811 714-547-6606  
 Riverside County 714-684-0071 714-547-6606  
 Inyo County 714-684-0071 714-547-6606  
 San Bernardino County 714-684-0071 714-547-6606  
 Los Angeles County 213-621-3111 24 HOUR SERVICE  
 San Diego County 714-298-0595 714-232-0027

FOR FREE CABLE LOCATING SERVICE

**CURVE DATA**  
 R= 200'  
 Δ= 71° 16' 28"  
 T= 12.71'  
 L= 25.39'

**NOTE**  
 FOR FURTHER DETAILS  
 OF WONG WAY, UTILITIES,  
 TOPO, ETC.; SEE SHEET  
 NO. 9.

**PLAN**  
 1" = 5'

BENCH MARK C.R. NO. 16  
 3/4" I.R. WITH CAP  
 ELEV. 771.99  
 (SEE SHEET 8)

SCALE: HORIZ. 1" = 5'  
 VERT. 1" = 5'

DATE:

**CITY OF RIVERSIDE, CALIFORNIA  
 PUBLIC WORKS DEPARTMENT**

APPROVED BY: [Signature]  
 DATE: [Date]

APPROVED BY: [Signature]  
 DIRECTOR OF PUBLIC WORKS

NO.	DESCRIPTION	DATE

**RIVERSIDE COUNTY FLOOD CONTROL  
 AND  
 WATER CONSERVATION DISTRICT**

DESIGNED BY: R.W. Barry  
 DRAWN BY: R.W. Barry  
 DATE DRAWN: NOV. 1972

APPROVED BY: [Signature]  
 CHIEF ENGINEER R.E. NO. 8822

CHECKED BY: [Signature]

**CITY OF RIVERSIDE DWG. S-890 SHT. 4<sup>th</sup>**

**BOX SPRINGS DRAIN  
 STAGE I**

SIPHON MOD. AT PINE ST. & WONG WAY

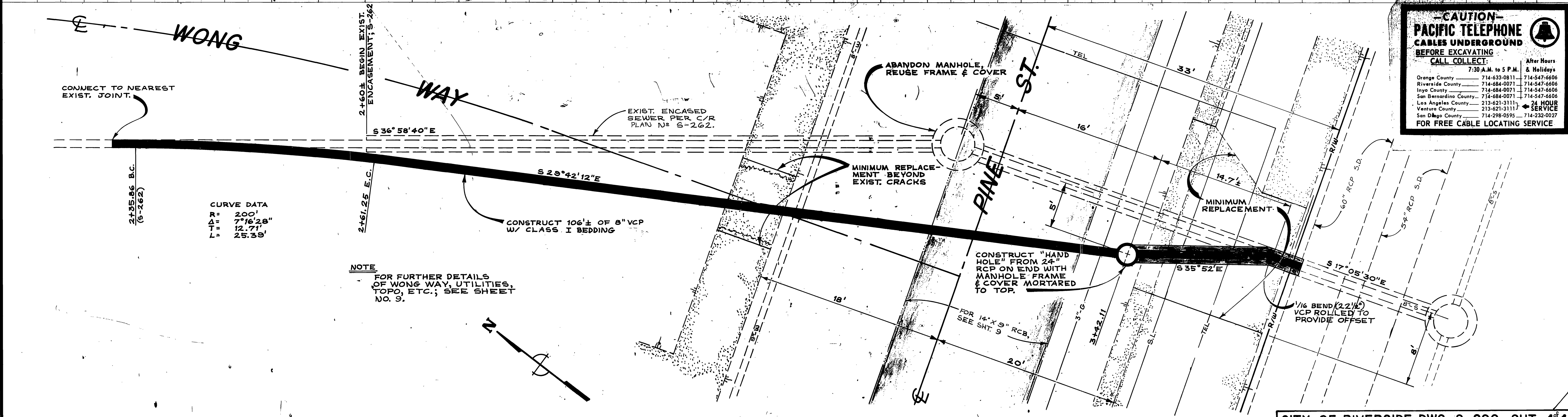
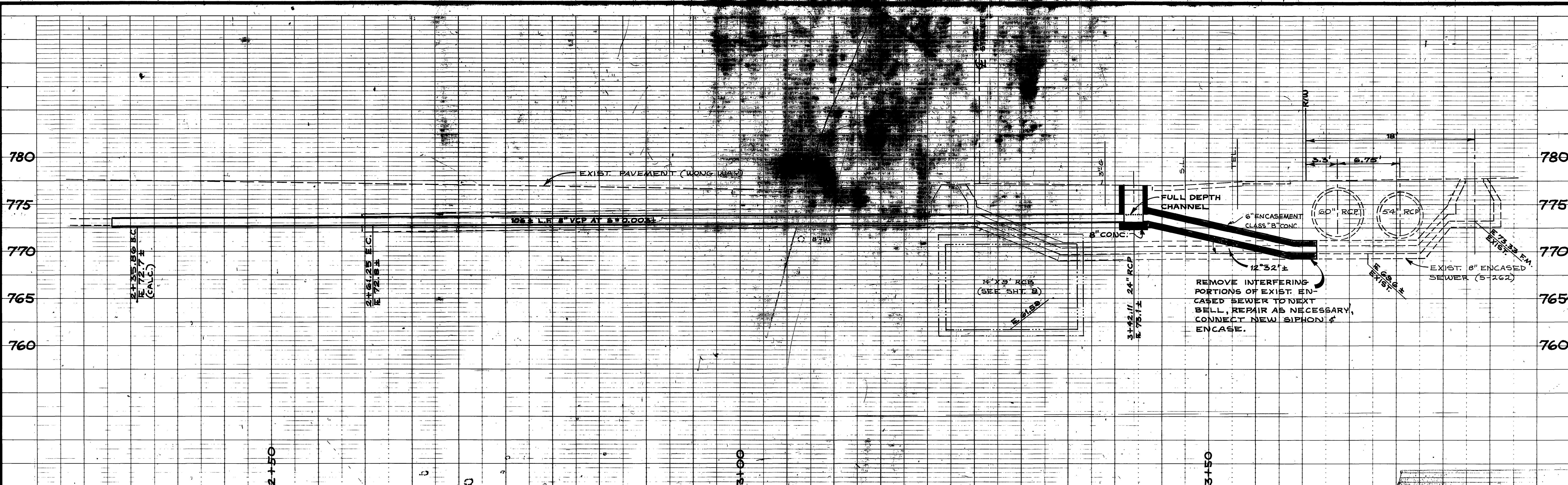
1970 STORM DRAIN BOND ISSUE PROJECT NO. 6

PROJECT NO.  
1-0-220

DRAWING NO.  
1-287

SHEET NO.  
20 OF 60

**AS BUILT**



**CAUTION - PACIFIC TELEPHONE CABLES UNDERGROUND**

BEFORE EXCAVATING CALL COLLECT:

After Hours  
7:30 A.M. to 5 P.M. & Holidays

Orange County 714-633-0811 714-547-6606  
 Riverside County 714-684-0071 714-547-6606  
 Inyo County 714-684-0071 714-547-6606  
 San Bernardino County 714-684-0071 714-547-6606  
 Los Angeles County 213-621-3111 24 HOUR SERVICE  
 San Diego County 714-298-0595 714-232-0027

FOR FREE CABLE LOCATING SERVICE

**PLAN**  
1" = 5'

BENCH MARK C.R. NO. 16  
3/4" I.R. WITH CAP  
ELEV. 771.00  
(SEE SHEET 8)

SCALE: HORIZ. 1" = 5'  
VERT. 1" = 5'

DATE: \_\_\_\_\_

**CITY OF RIVERSIDE, CALIFORNIA  
PUBLIC WORKS DEPARTMENT**

APPROVED BY: \_\_\_\_\_  
DATE: \_\_\_\_\_  
PRINCIPAL ENGINEER

APPROVED BY: \_\_\_\_\_  
DATE: \_\_\_\_\_  
DIRECTOR OF PUBLIC WORKS

TRAFFIC DIVISION

NO.	REVISIONS	DATE
1	No Change	1-5-78

**RIVERSIDE COUNTY FLOOD CONTROL AND WATER CONSERVATION DISTRICT**

DESIGNED BY: R.W. Barry  
DRAWN BY: R.W. Barry  
DATE DRAWN: NOV. 1972

APPROVED BY: \_\_\_\_\_  
DATE: 1-30-78  
CHIEF ENGINEER R.E. NO. 8822

**CITY OF RIVERSIDE DWG. S-890 SHT. 4/4**

**BOX SPRINGS DRAIN  
STAGE I**

SIPHON MOD. AT PINE ST. & WONG WAY

1970 STORM DRAIN BOND ISSUE PROJECT NO. 6

PROJECT NO.  
1-O-220

DRAWING NO.  
1-287

SHEET NO.  
20 OF 60

AS BUILT