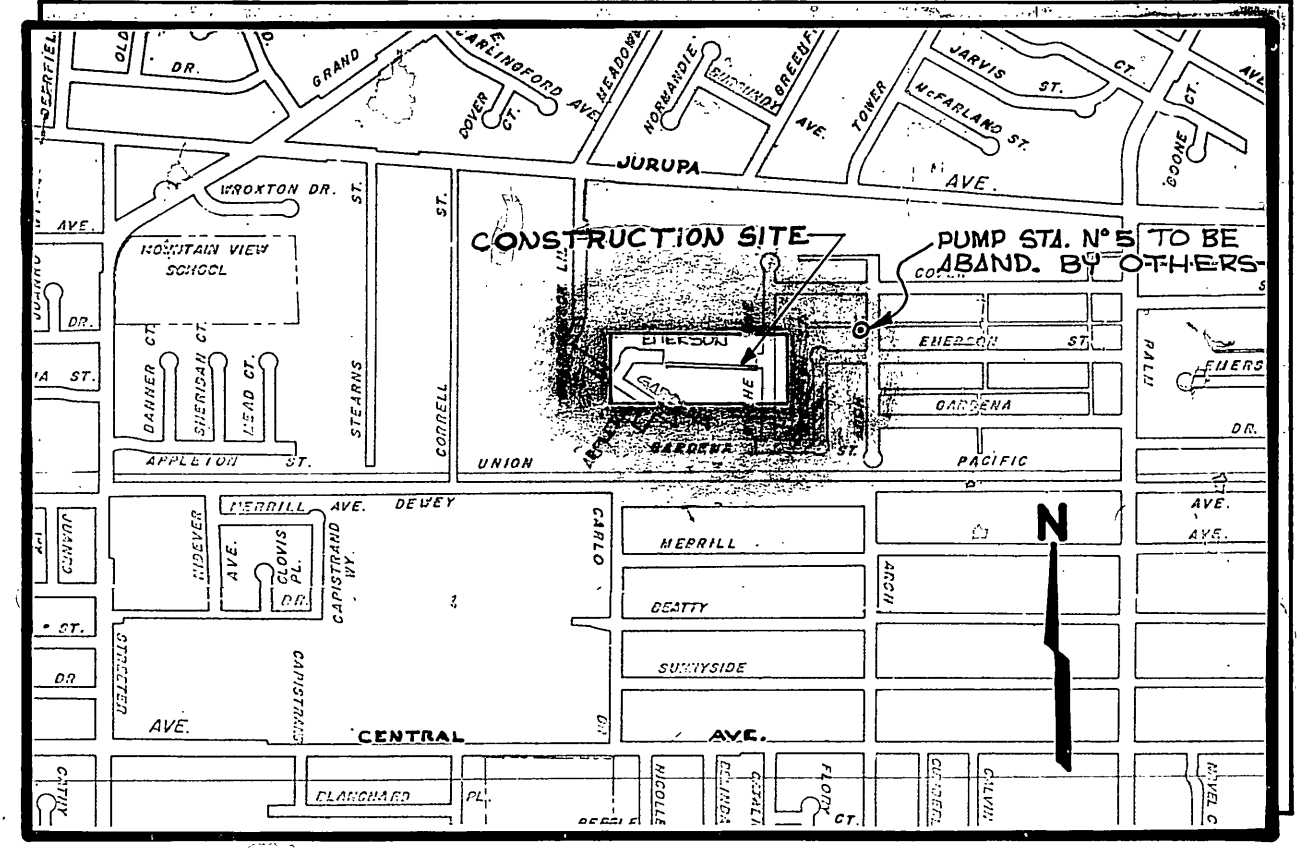
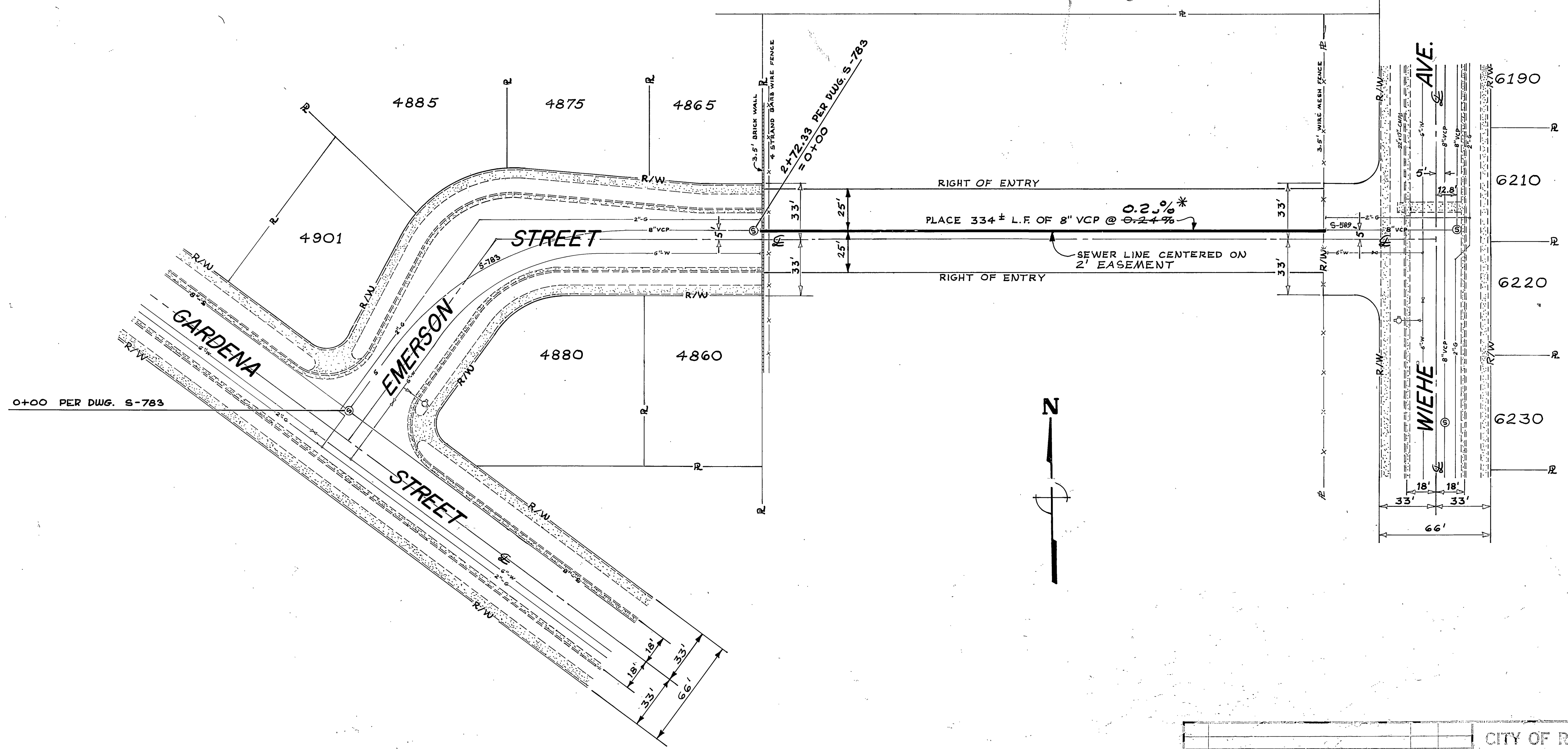


BENCH MARK ELEV. 802.991
 DISK IN CONCRETE POST, 81.6 FT. NORTH OF THE CENTERLINE OF DEWEY AVE. 4.5 FT. WEST OF THE CENTERLINE OF ARCH WAY PRODUCED. 33.7 FT. NORTH OF THE NORTH RAIL OF U.R.R.



LOCATION MAP
 SCALE: 1" = 1000'

GENERAL NOTES

- (1) PIPE SHALL BE 8" VCP, INSTALLED PER STD. 4-52, CASE I (W = 8" MAX).

*AS BUILT By R.W. Barry 12-19-1973

CITY OF RIVERSIDE, CALIFORNIA DEPARTMENT OF PUBLIC WORKS		EMERSON ST. SEWER EXTENSION BETWEEN GARDENA STREET AND WIEHE AVE.		PROJECT NO. 510
DESIGNED BY: R.W.B. OR VAN BY: R.W. Barry CHECKED BY: [Signature]	APPROVED BY: [Signature] PRINCIPAL ENGINEER PARK DEPARTMENT	APPROVED BY: [Signature] DIV. CHIEF OF PUBLIC WORKS	DATE: 8-10-73	S-891 SHEET 1 OF 1
HORIZ. SCALE: 1" = 40'		VERT. SCALE: 1" = 4'		FILE NO.