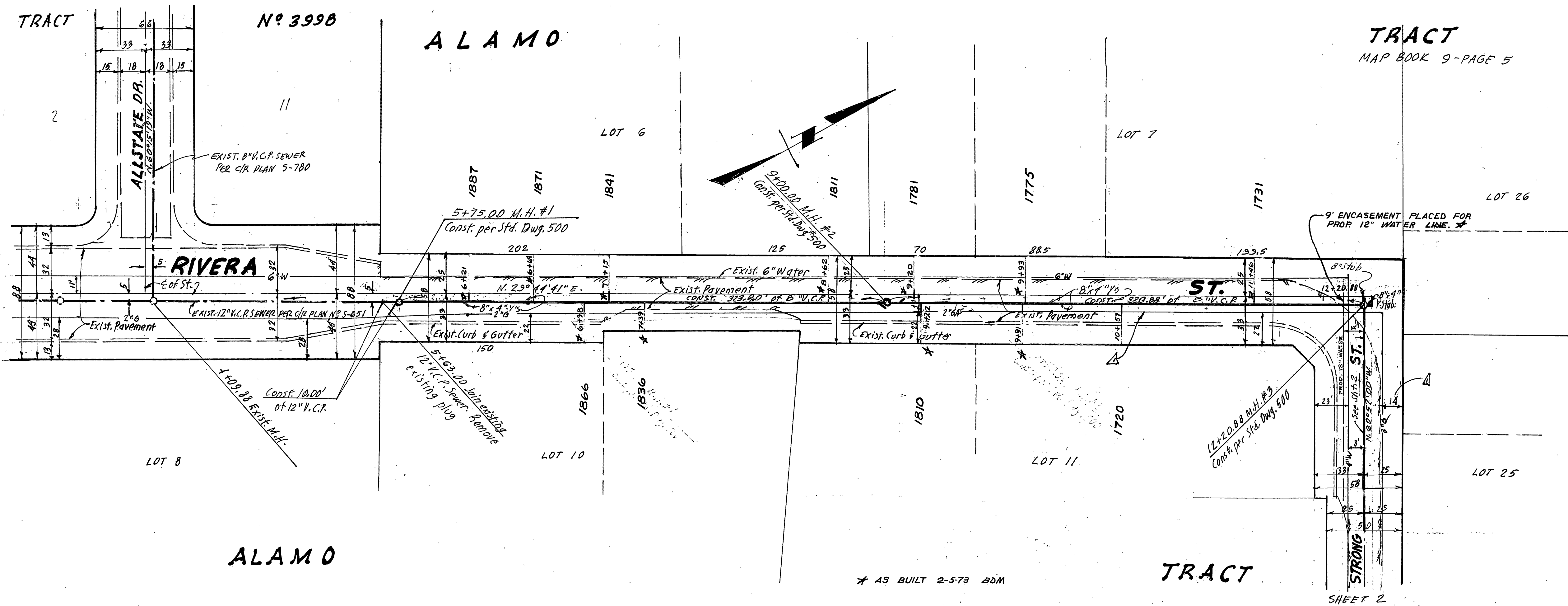


BENCH MARK:
 TOP OF IRON PIPE, CAPPED & STRONG ST.
 & E'LY. LINE OF RIVERA ST.
 ELEV. 804.62 9/8 F.B. 600/62

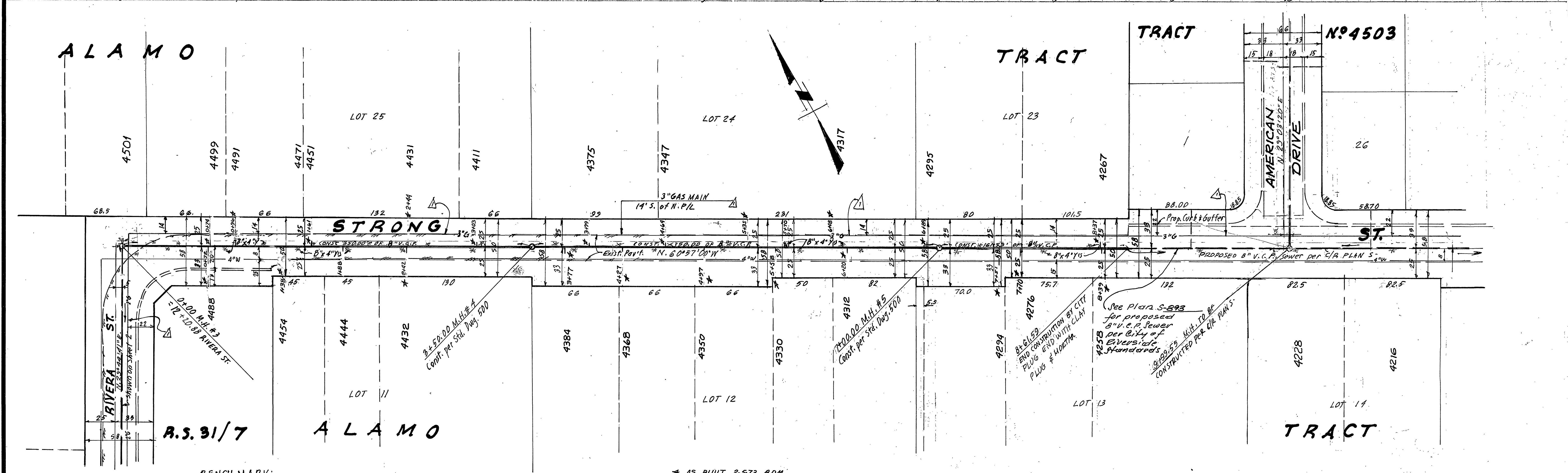
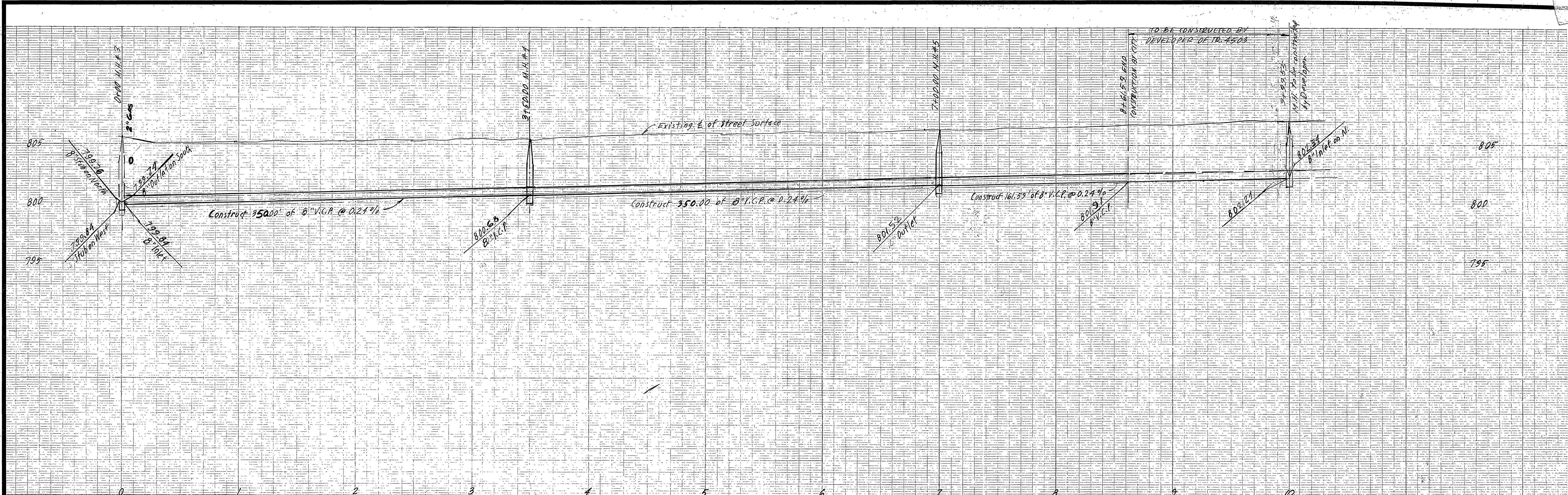


ALAMO

TRACT

SHEET 2

CITY OF RIVERSIDE WATER DEPARTMENT APPROVED BY: <i>Edward J. Creamer</i> DATE: 8-24-72	PREPARED BY: CONSOLIDATED ENGINEERING COMPANY CONSULTING CIVIL ENGINEERS 8845 W. OLYMPIC BOULEVARD BEVERLY HILLS, CALIFORNIA, 90211 PH. 213/652-6640 APPROVED BY: <i>Enrique Acosta</i> DATE: 8/15/72 R.C.E. 10915	CITY OF RIVERSIDE, CALIFORNIA DEPARTMENT OF PUBLIC WORKS APPROVED BY: <i>James J. [Signature]</i> DIRECTOR OF PUBLIC WORKS DATE: 8-22-72	SEWER PLAN AND PROFILE RIVERA ~ STRONG RIVERA STREET SEWER EXTENSION FOR TRACT N° 4503 HORIZ. SCALE: 1" = 40' VERT. SCALE: 1" = 4' FILE NO.	PROJECT NO. S-892
				SHEET OF 2



BENCH MARK:
TOP OF IRON PIPE CAPPED & STRONG ST.
& E'LY. LINE OF RIVERA ST.
ELEV. 804.62 OR F.B. 600/62

CITY OF RIVERSIDE WATER DEPARTMENT
APPROVED BY: *Harold Brown*
DATE: 8-24-72

PREPARED BY:
CONSOLIDATED ENGINEERING COMPANY
CONSULTING CIVIL ENGINEERS
8845 W. OLYMPIC BOULEVARD
BEVERLY HILLS, CALIFORNIA, 90211 Ph. 213/652-6540
APPROVED BY: *William A. ...* DATE: 8/13/72
R.C.E.P. 10915

MARK	REVISIONS	DATE
1	REVISED SIZE & LOCATION OF GAS MAIN	8/13/72

CITY OF RIVERSIDE, CALIFORNIA
DEPARTMENT OF PUBLIC WORKS
APPROVED BY: *...*
OFFICE ENGINEER
DATE: 8-24-72
TRAFFIC DIVISION
ASSISTANT CITY ENG.

SEWER PLAN AND PROFILE
RIVERA - STRONG
STREET
SEWER EXTENSION
TRACT NO. 4503
HORIZ. SCALE: 1" = 40' VERT. SCALE: 1" = 4'

PROJECT NO.
5-892
SHEET 2 OF 2
FILE NO.