

BENCH MARK:
 TOP OF IRON PIPE, CAPPED, & STRONG ST.
 & ELY. LINE OF RIVERA ST.
 ELEV. 804.62 C/R F.B. 600/62

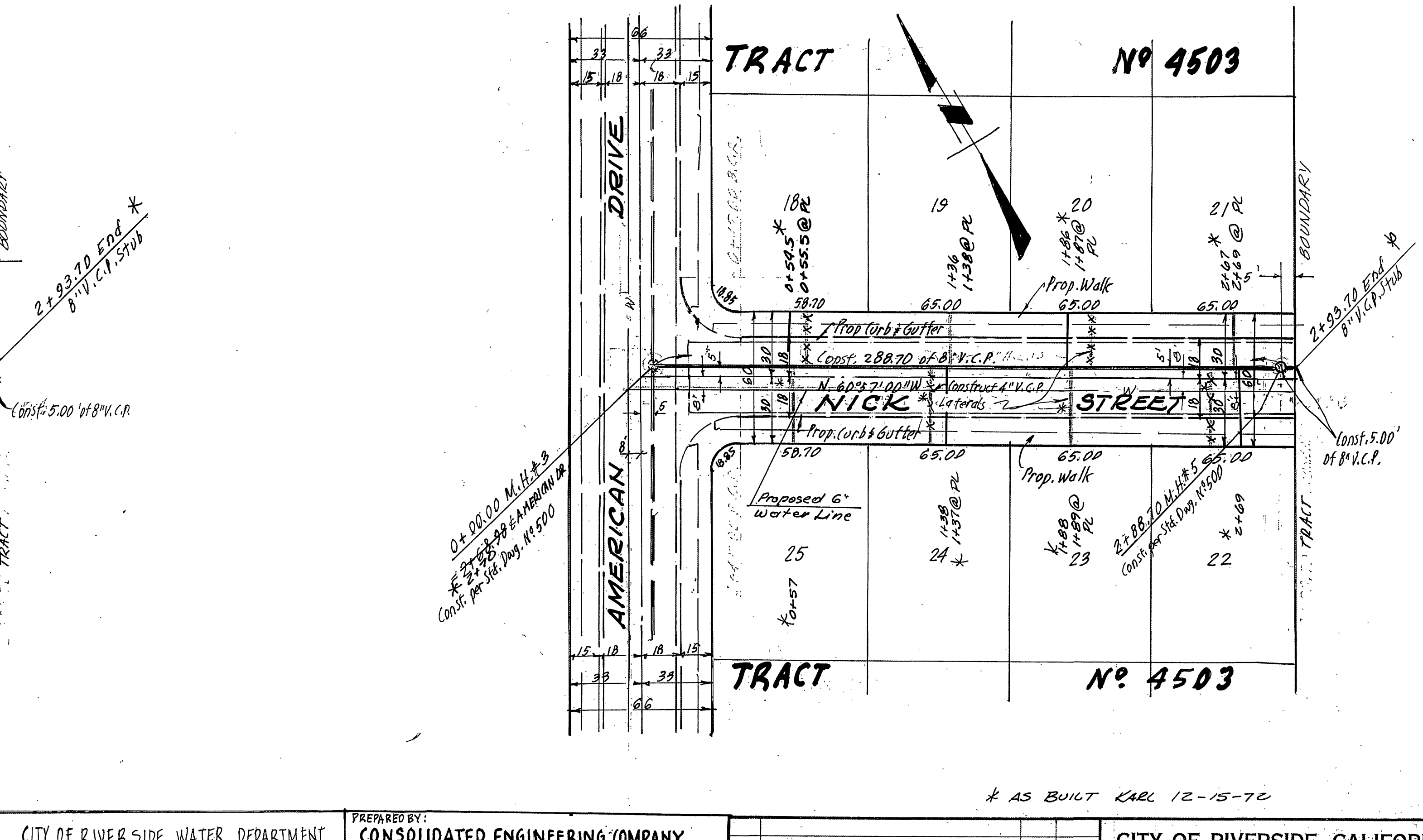
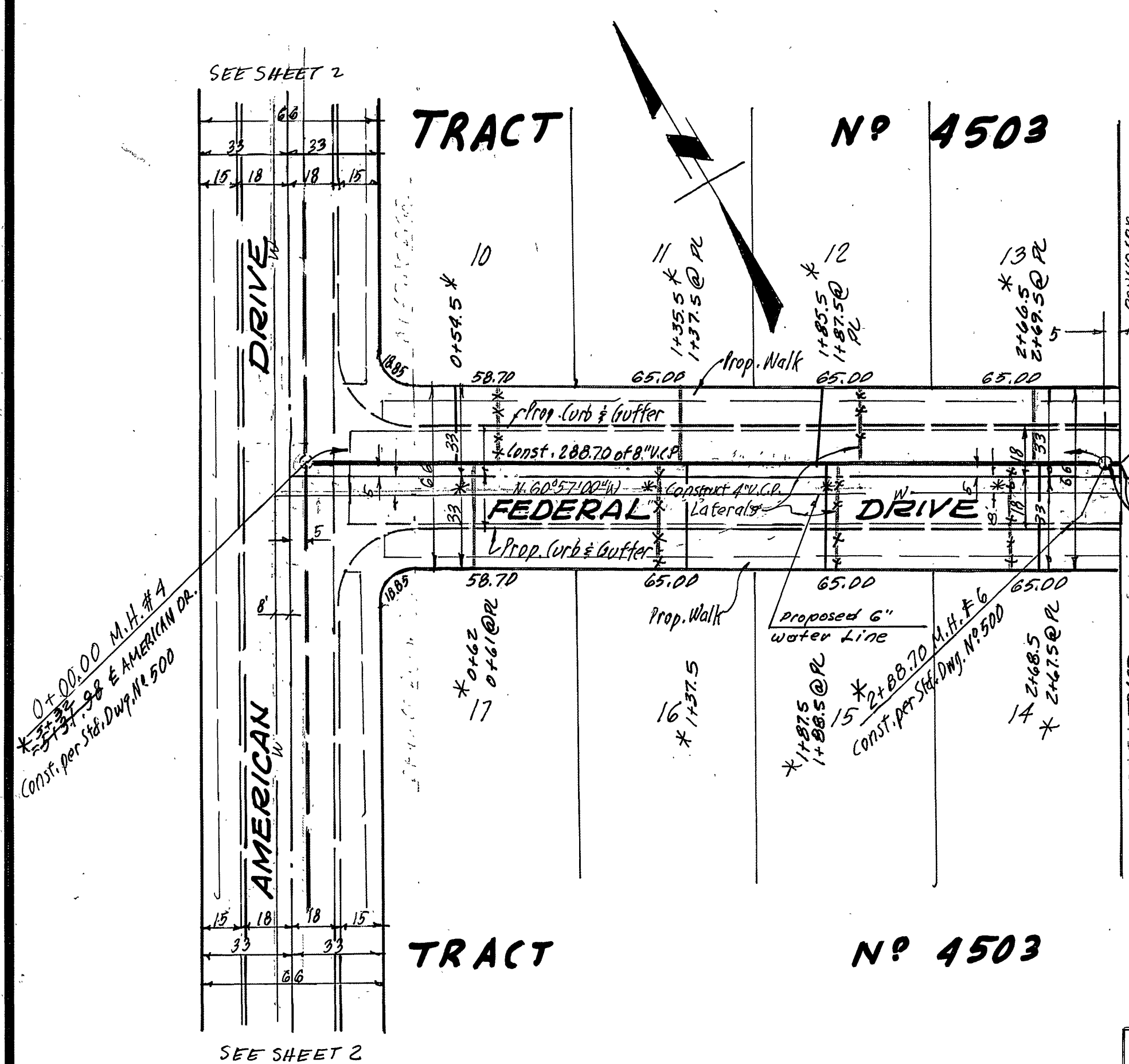
GENERAL NOTES

- CONSTRUCTION SHALL BE IN ACCORDANCE WITH THE STANDARD SPECIFICATIONS FOR PUBLIC WORKS, 1970 EDITION, AND PER CITY OF RIVERSIDE STANDARD DRAWINGS.
- IT SHALL BE THE RESPONSIBILITY OF THE CONTRACTOR TO CLEAR THE RIGHT OF WAY IN ACCORDANCE WITH THE PROVISIONS OF THE LAW AS IT AFFECTS EACH UTILITY INCLUDING IRRIGATION LINES AND APPURTENANCES, AT NO COST TO THE CITY.
- PIPE SHALL BE BEDDED PER CASE 1, STD. DWG. NO. 452, UNLESS OTHERWISE NOTED.
- LOCATION OF WYES AND LATERALS TO BE DETERMINED IN THE FIELD.
- ALL STUBS AND LATERALS TO BE CONSTRUCTED IN ACCORDANCE WITH STANDARD DRAWING NO. 582. STUBS SHALL BE PLUGGED AND CAPPED. TEES SHALL BE LAID FLAT.
- MANHOLE FRAMES AND COVERS TO BE SET TO PROPOSED PAVEMENT GRADES.
- LATERALS ARE TO BE 4" AND EXTENDED TO PROPERTY LINE.
- 8" DENOTES ENCASEMENT (TYPE "B") OR INSTALL 8" I.P. CLASS 150 4" EACH SIDE OF WATER LINE ORRRING. REF. DWG. CWO-023 R.V.P. WATER DIVISION.

QUANTITY ESTIMATE

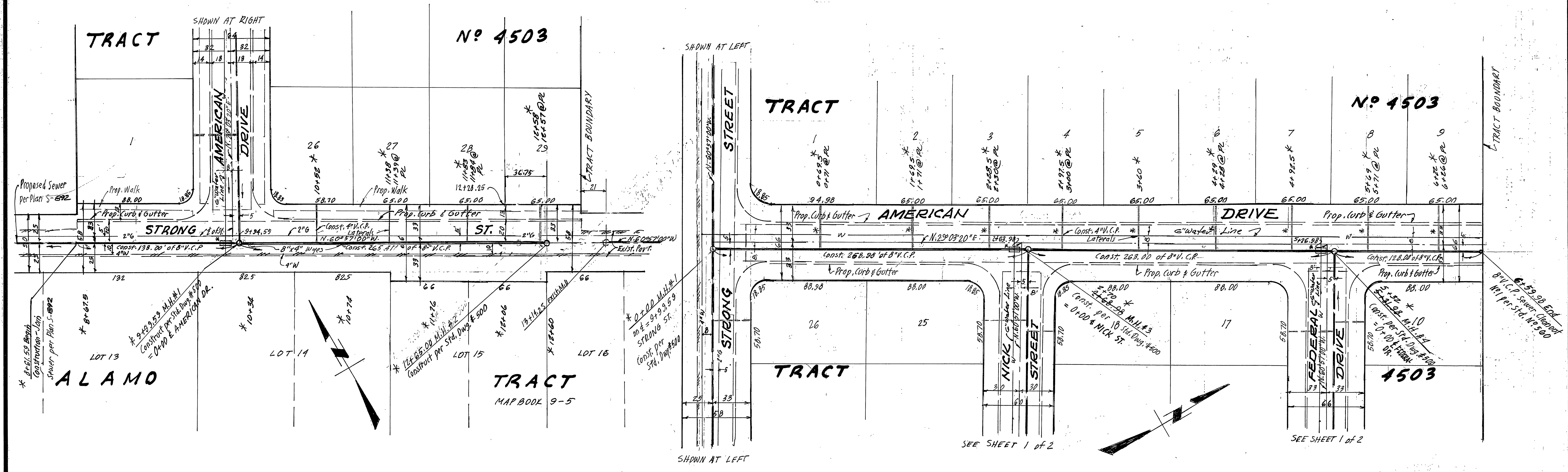
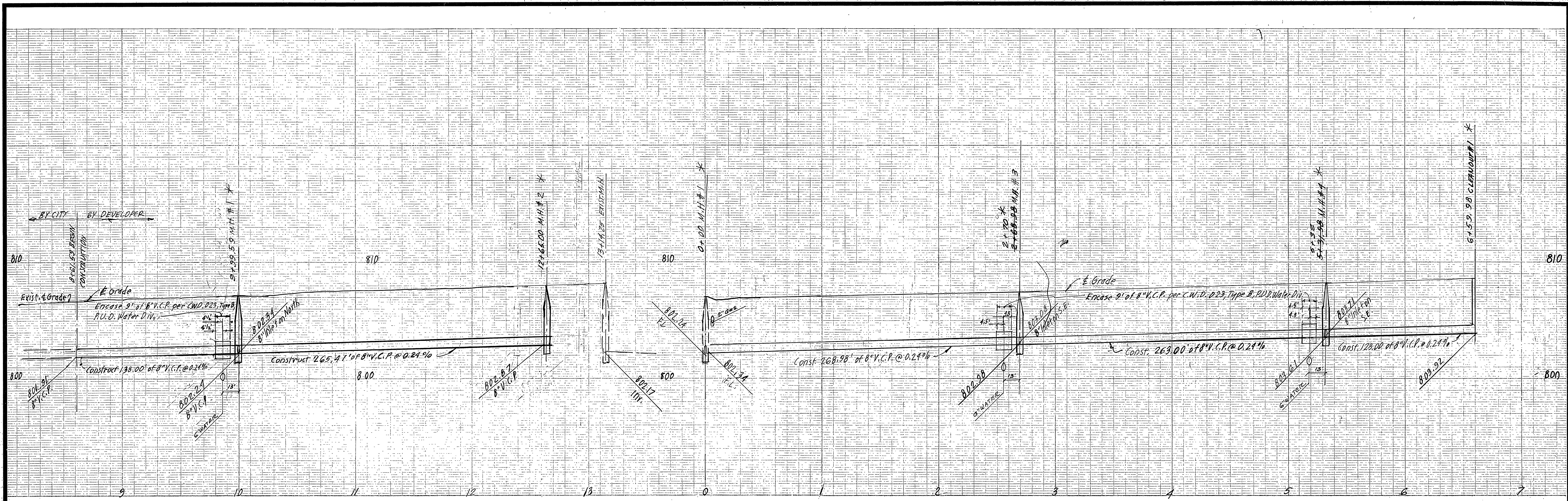
1. 8" VITRIFIED CLAY PIPE	1652 LF.
2. 4" VITRIFIED CLAY PIPE	946 LF.
3. MANHOLE STANDARD NO. 500	6 E.A.
4. CLEANOUT STANDARD NO. 560	1 E.A.
5. 4" x 8" WYES	36 E.A.
6. PAVEMENT REPLACEMENT	758 S.F.

NOTE: This quantity estimate has not been checked by the City nor does the CITY OF RIVERSIDE assume any responsibility for its accuracy.



* AS BUILT KARL 12-15-70

CITY OF RIVERSIDE WATER DEPARTMENT APPROVED BY: <i>Heward K. Orman</i> DATE: 8-24-72	PREPARED BY: CONSOLIDATED ENGINEERING COMPANY CONSULTING CIVIL ENGINEERS 8845 W. OLYMPIC BOULEVARD BEVERLY HILLS, CALIFORNIA 90211 Ph. 313/652-6540 APPROVED BY: <i>Guinevere Keener</i> DATE: 5/15/72 R.C.E. NO. 10915	CITY OF RIVERSIDE, CALIFORNIA DEPARTMENT OF PUBLIC WORKS		SEWER PLAN AND PROFILE FEDERAL DRIVE NICK STREET TRACT NO. 4503		PROJECT NO. 5-893
		DESIGNED BY: _____ DRAWN BY: _____ CHECKED BY: L.L.	APPROVED BY: _____ DATE: _____	OFFICE ENGINEER PARK DEPARTMENT TRAFFIC DIVISION ASSISTANT CITY ENG.	BY: <i>W. P. [Signature]</i> DATE: 8/23/72	DIRECTOR OF PUBLIC WORKS



BENCH MARK:
 TOP OF IRON PIPE, CAPPED, @ STRONG ST.
 & ELY. LINE OF RIVERA ST
 ELEV. 804.62 CR F.B. 600/62

CITY OF RIVERSIDE WATER DEPARTMENT APPROVED BY: <i>Haworth Cream</i> DATE: 8-24-72	PREPARED BY: CONSOLIDATED ENGINEERING COMPANY CONSULTING CIVIL ENGINEERS 8845 W. OLYMPIC BOULEVARD BEVERLY HILLS, CALIFORNIA, 90211 Ph: 213/652-6540 APPROVED BY: <i>Enrique Alvarez</i> DATE: 5/15/72 R.C.E. NO 10915	CITY OF RIVERSIDE, CALIFORNIA DEPARTMENT OF PUBLIC WORKS APPROVED BY: <i>[Signature]</i> OFFICE ENGINEER PARK DEPARTMENT TRAFFIC DIVISION ASSISTANT CITY ENG.	APPROVED BY: <i>[Signature]</i> DIRECTOR OF PUBLIC WORKS DATE: 8/24/72	PROJECT NO. DRAWING NUMBER 5-893
				SHEET 2 OF 2 FILE NO.

HORIZ. SCALE: 1" = 40' VERT. SCALE: 1" = 4'