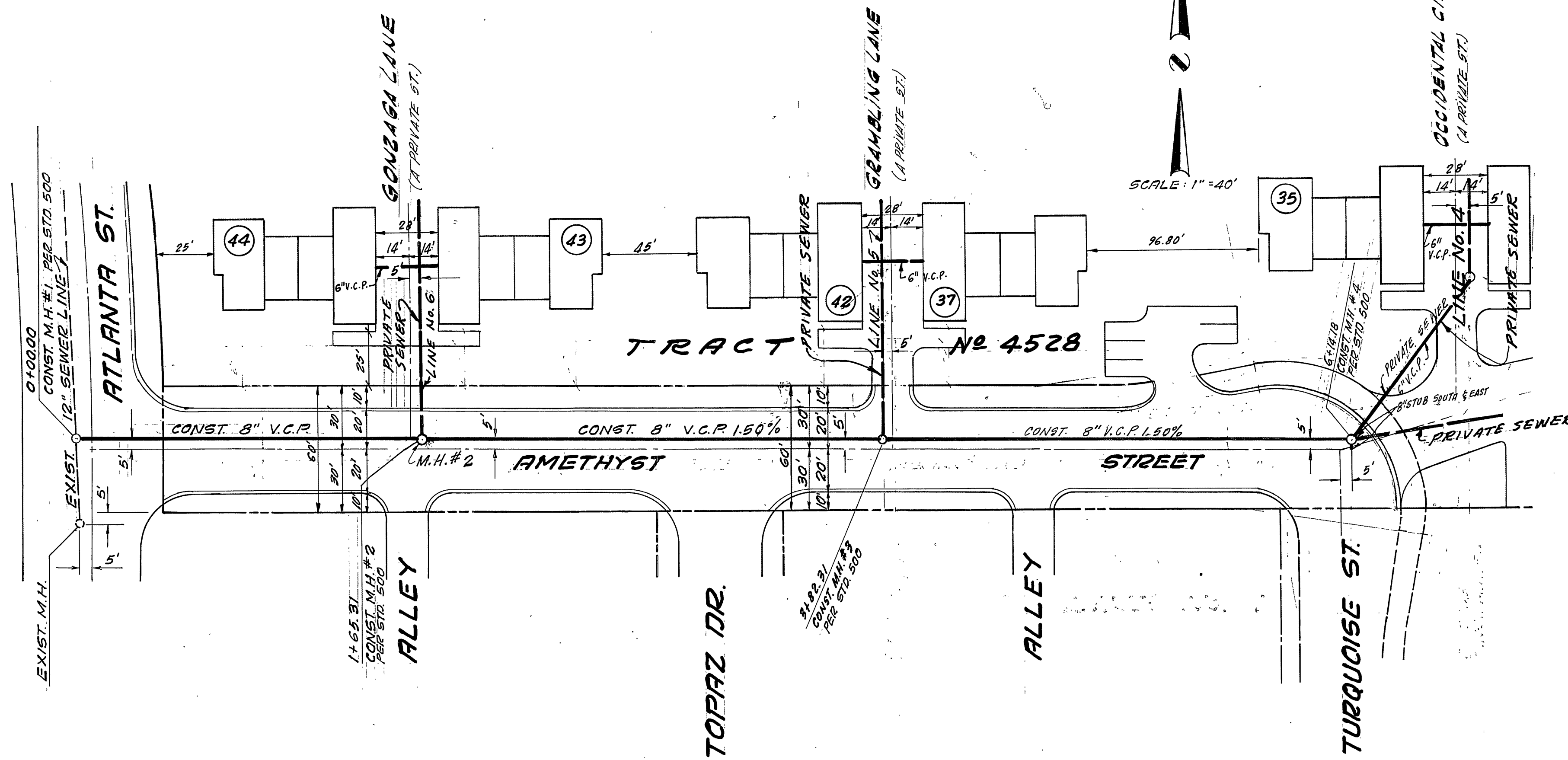


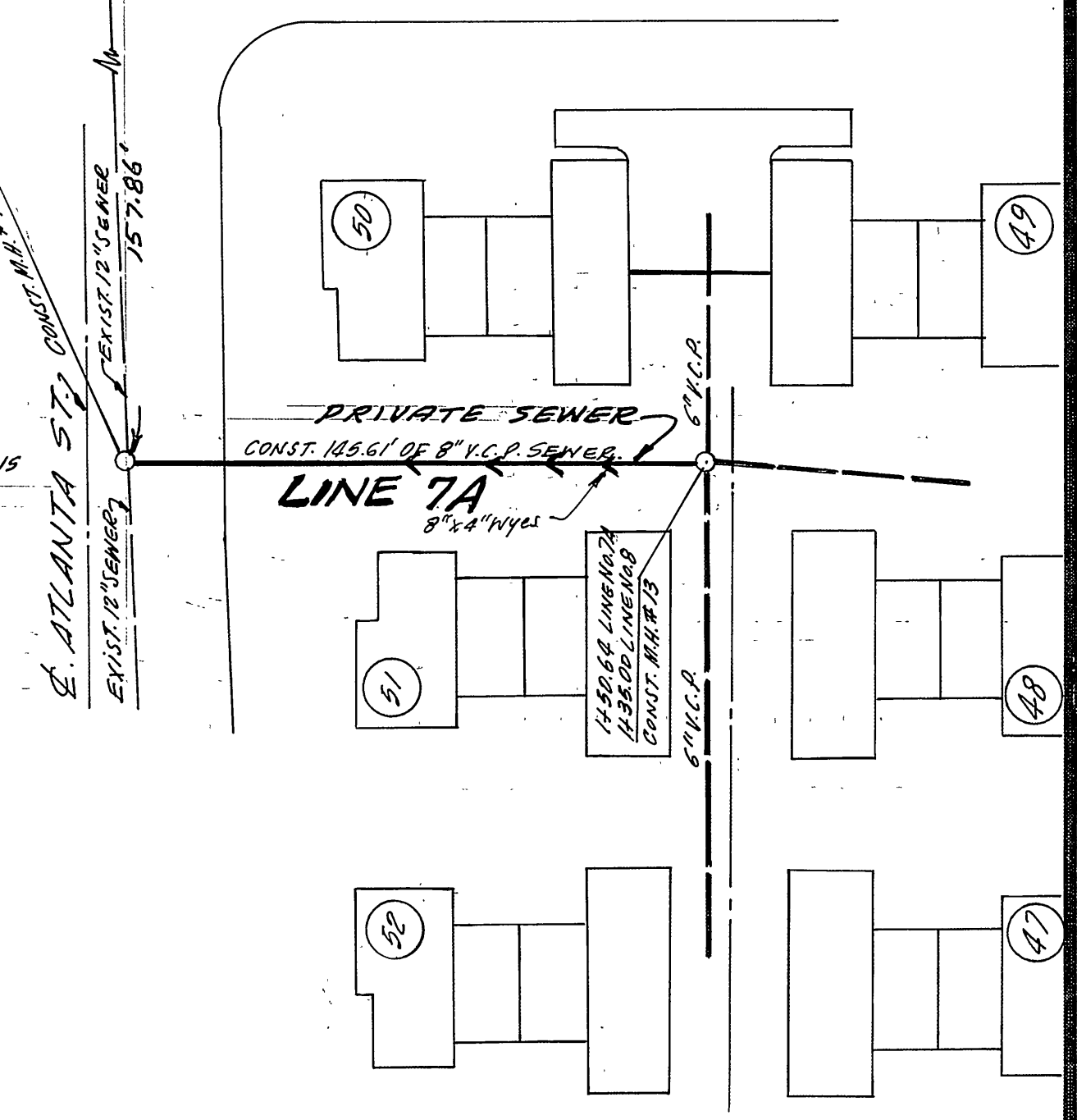
BENCH MARK:
 B.M. # 17 E. PK. N & T IN CONC. BASE STREET LIGHT ON
 NE COR. CHICAGO AVE. & SPRUCE ST.
 F.B. 847/7 ELEV. = 910.371

SPRUCE ST.



NOTES:

1. All construction to be in accordance with City of Riverside Standard Drawings and Standard Specifications for Public Works Construction, 1970 Edition.
2. It shall be the responsibility of the contractor to clear the right of way in accordance with the provisions of the law as it affects each utility including irrigation lines and appurtenances and at no cost to the city.
3. Manhole covers to meet finish grade as it exists on Atlanta street.
4. Joints in vitrified clay pipe sewers shall conform to ASTM standards C-425-6 DT, or the latest revision thereof.
5. Pipe shall be bedded per case I, standard drawing NO. 452, unless otherwise specified on plan.
6. Location of wyes and laterals to be determined in the field.
7. All wyes and laterals to be constructed in accordance with standard drawing NO. 562, wyes shall be plugged and capped.



CITY OF RIVERSIDE WATER DEPARTMENT	TARIQ M. SHAMMA ASSOCIATES INC. 2229 E. LINCOLN AVE. ANAHEIM, CALIFORNIA 92806	"AS BUILT" NO CHANGE	R.A.B. 4/73	CITY OF RIVERSIDE, CALIFORNIA DEPARTMENT OF PUBLIC WORKS	AMETHYST ST. SEWER FROM ATLANTA ST. TO TURQUOISE ST. FOR TR. 4528 SEWER PLAN & PROFILES PRIVATE ST. FROM ATLANTA AVE TO N.E.	INDEXED R.R. PROJECT NO. 7202
	APPROVED BY: H.A. Ostrom 10-19-72	Approved: R.C.E. 12818 J.M. 72-02	MARK REVISIONS APPR. DATE		APPROVED BY: [Signature] DIRECTOR OF PUBLIC WORKS	5-898
		DESIGNED BY: DRAWN BY: CHECKED BY: L.S.		DATE: 10-31-72	HORIZ. SCALE: 1" = 40' VERT. SCALE: 1" = 4'	SHEET 1 OF 1 FILE NO.