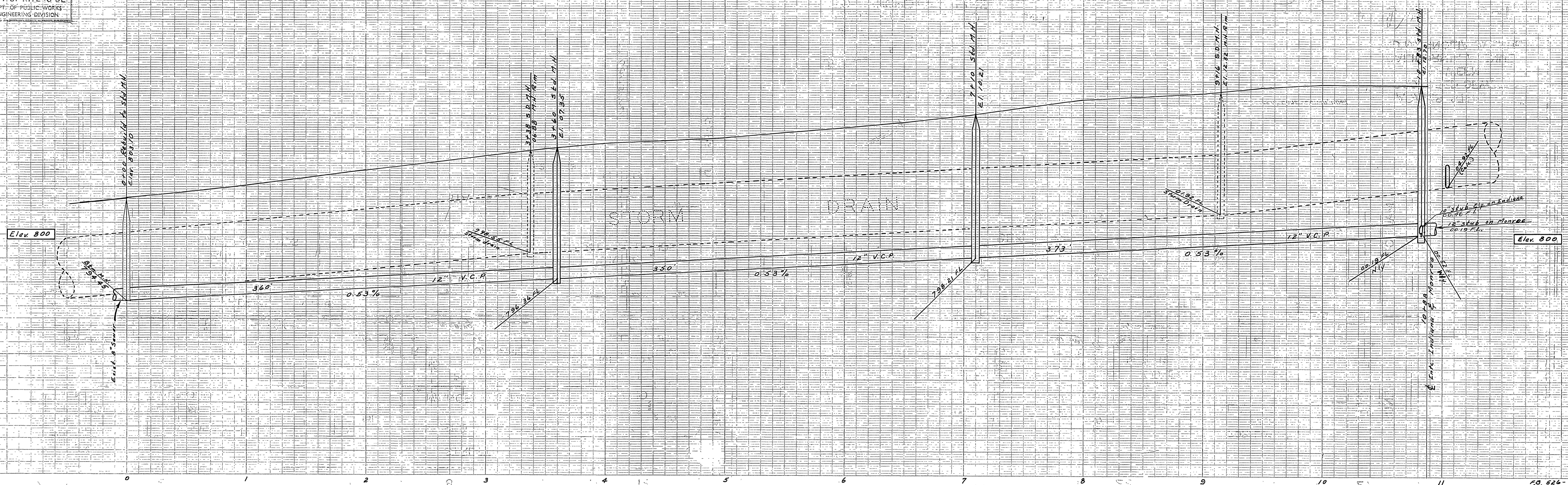
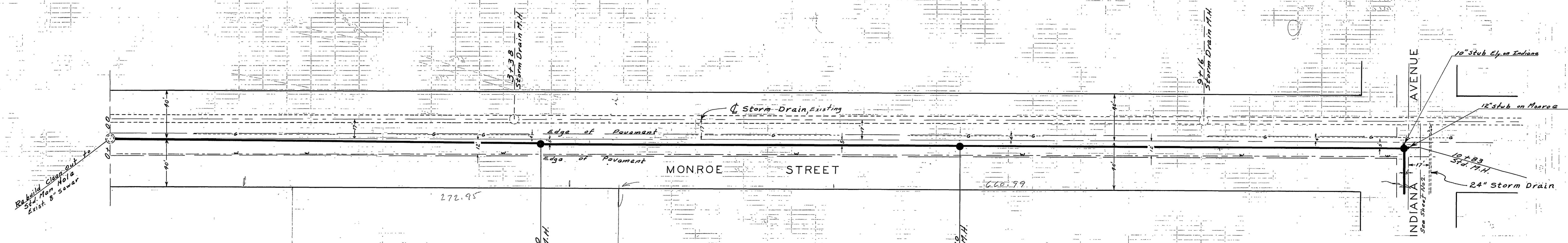


PROPERTY OF
CITY OF RIVERSIDE
DEPT. OF PUBLIC WORKS
ENGINEERING DIVISION

PROPERTY OF
CITY OF RIVERSIDE
DEPT. OF PUBLIC WORKS
ENGINEERING DIVISION

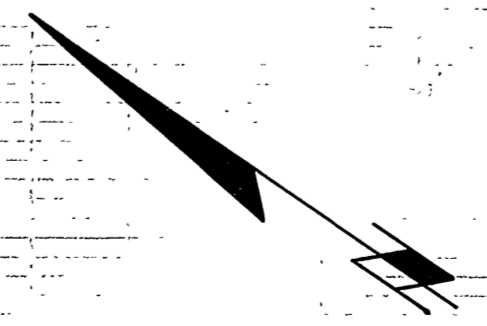


NO. 526-33



Rebuild Clean-out
Std. Man. Hole
Exist. & Sewer

Par 2,
R/S 698
Riv. Christian High School
3332



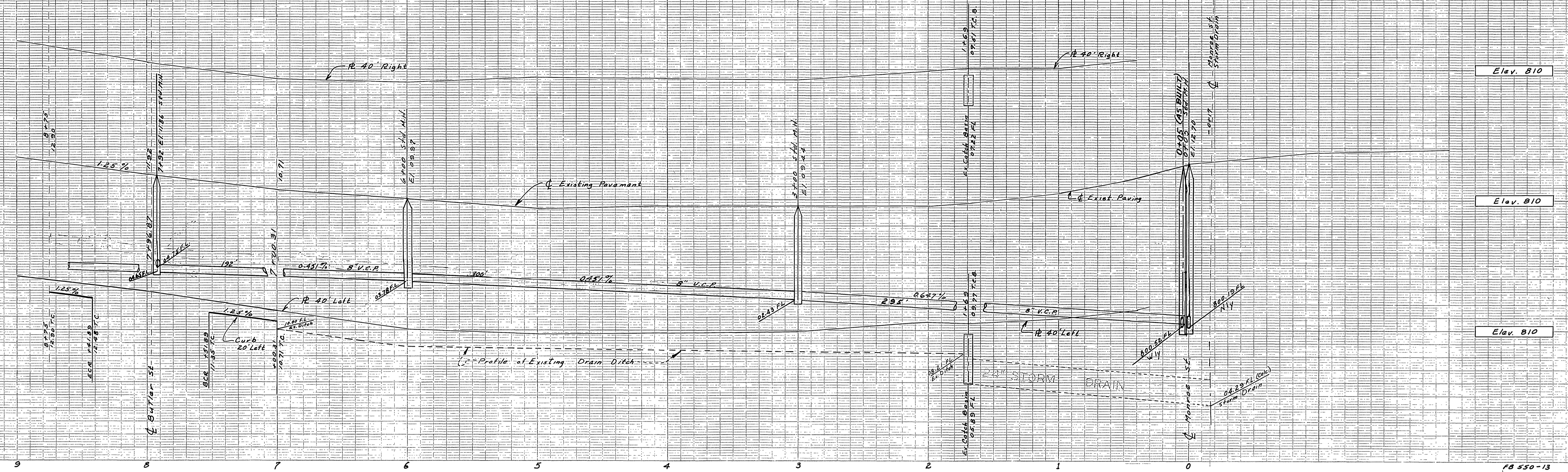
110.21
798.21
17.00

PROPERTY OF
CITY OF RIVERSIDE
DEPT. OF PUBLIC WORKS
ENGINEERING DIVISION

PROPERTY OF
CITY OF RIVERSIDE
DEPT. OF PUBLIC WORKS
ENGINEERING DIVISION

J.F. DAVIDSON-CIVIL ENGINEER
RE. No 802
RIVERSIDE, CALIFORNIA
APPROVED BY: *J.F. Davidson* DATE: 12-23-56
CITY OF RIVERSIDE, CALIFORNIA
DEPARTMENT OF PUBLIC WORKS
SEWER PLAN & PROFILE
MONROE STREET
AMBERWOOD TRACT
HORIZ. SCALE 1"=40' VERT. SCALE 1"=4'
APPROVED BY: *J.F. Davidson* NO. 5-9
Director of Public Works
DATE: Sept 2, 1956 SHEET 1 OF 8

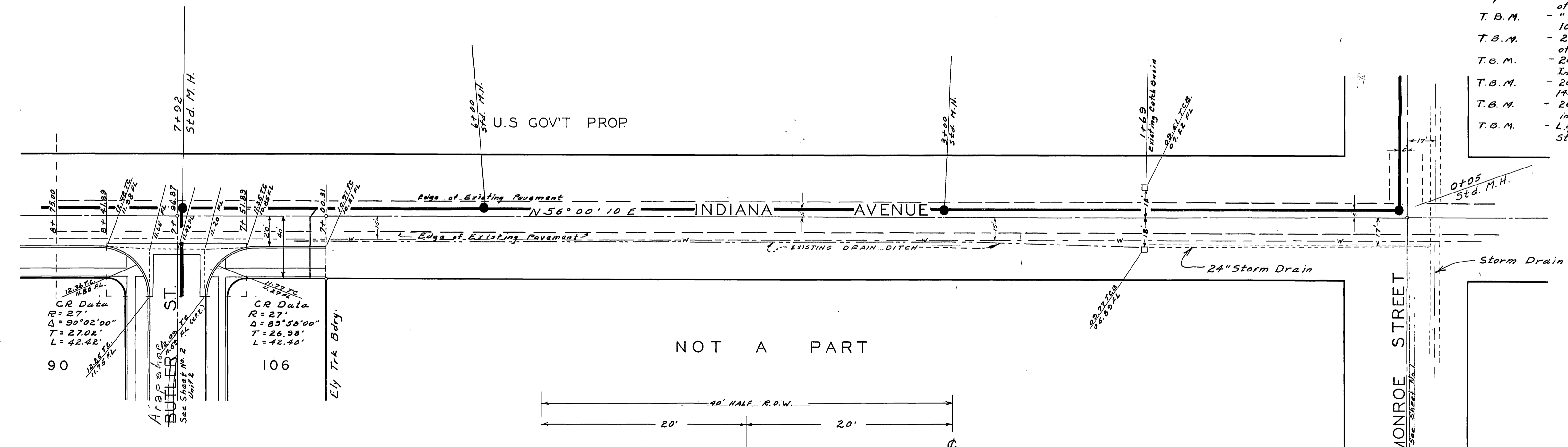
Reimb. Contr # 20



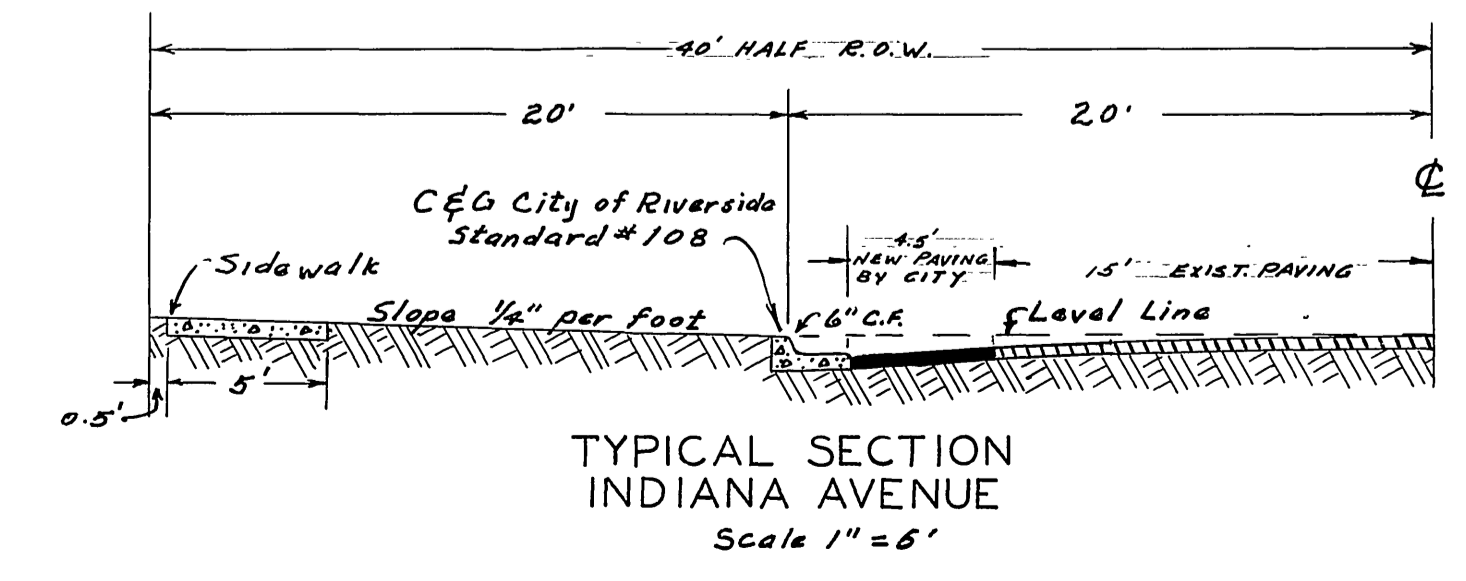
FB 550-13

BENCH MARKS

- State B.M. - Pk in lead on concrete casing for M.H. 180's Elev. 812.29
- City B.M. - Pk in lead in calcite wall 4'± East of east end Elev. 829.26
- T.B.M. - "X" Top of storm drain wly side Monroe, Elev. 819.32
- T.B.M. - 20 penny spk. in P. Pole #12226 J 80'± east Elev. 813.99
- T.B.M. - 20 penny spk. in P. Pole #8290 J on sly side of Elev. 816.22
- T.B.M. - 20 penny spk. in P. Pole #8293 J Sly side Indiana Elev. 824.22
- T.B.M. - 1850'± wly from intc. of Indiana & Monroe.
- T.B.M. - 20 penny spk. in P. Pole #2500 J on S.E. corner of Elev. 834.42
- T.B.M. - L & T. Top of concrete dyke Nly side of canal Elev. 842.81
- Station 10+73.57, Amber Street (Proposed).



- NOTES:**
1. SEWER ALONG INDIANA AVE. TO BE CONSTRUCTED WITH UNIT NO. 1
 2. ALL STREET IMPROVEMENTS TO BE CONSTRUCTED WITH UNIT NO. 2



J.F. DAVIDSON - CIVIL ENGINEER
R.E. No. 362
RIVERSIDE, CALIFORNIA
APPROVED BY: *J. Davidson* DATE: 11-5-56
CITY OF RIVERSIDE, CALIFORNIA
DEPARTMENT OF PUBLIC WORKS
SEWER PLAN & PROFILE
INDIANA AVENUE
AMBER WOOD TRACT
HORIZ. SCALE - 1"=40' VERT. SCALE 1"=4'
APPROVED BY: *J. Davidson* NO. 5-9
Director of Public Works
DATE: 11-5-56 SHEET 2 OF 8

PROPERTY OF
CITY OF RIVERSIDE
DEPT. OF PUBLIC WORKS
ENGINEERING DIVISION

PROPERTY OF
CITY OF RIVERSIDE
DEPT. OF PUBLIC WORKS
ENGINEERING DIVISION

Elev. 820

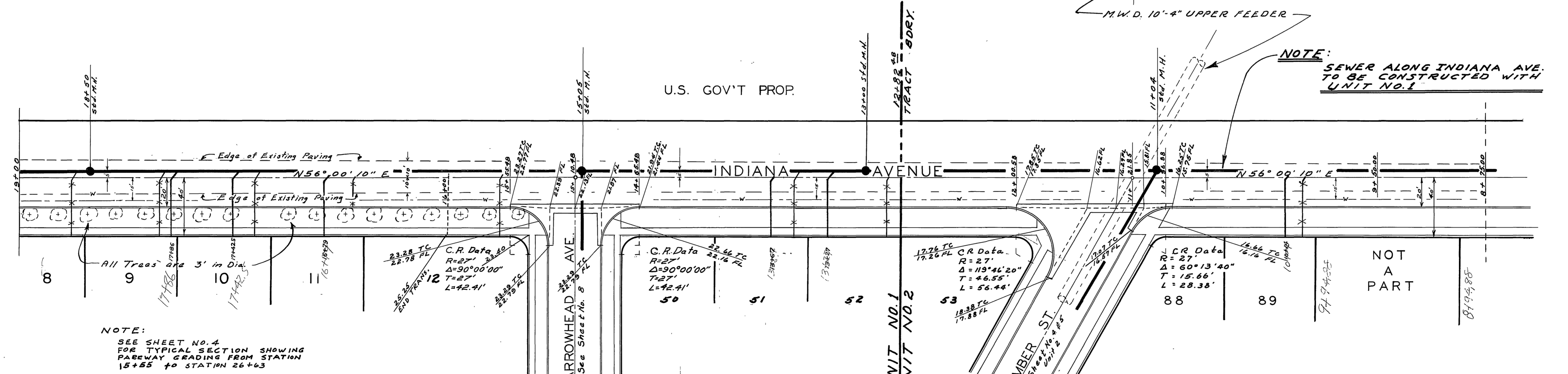
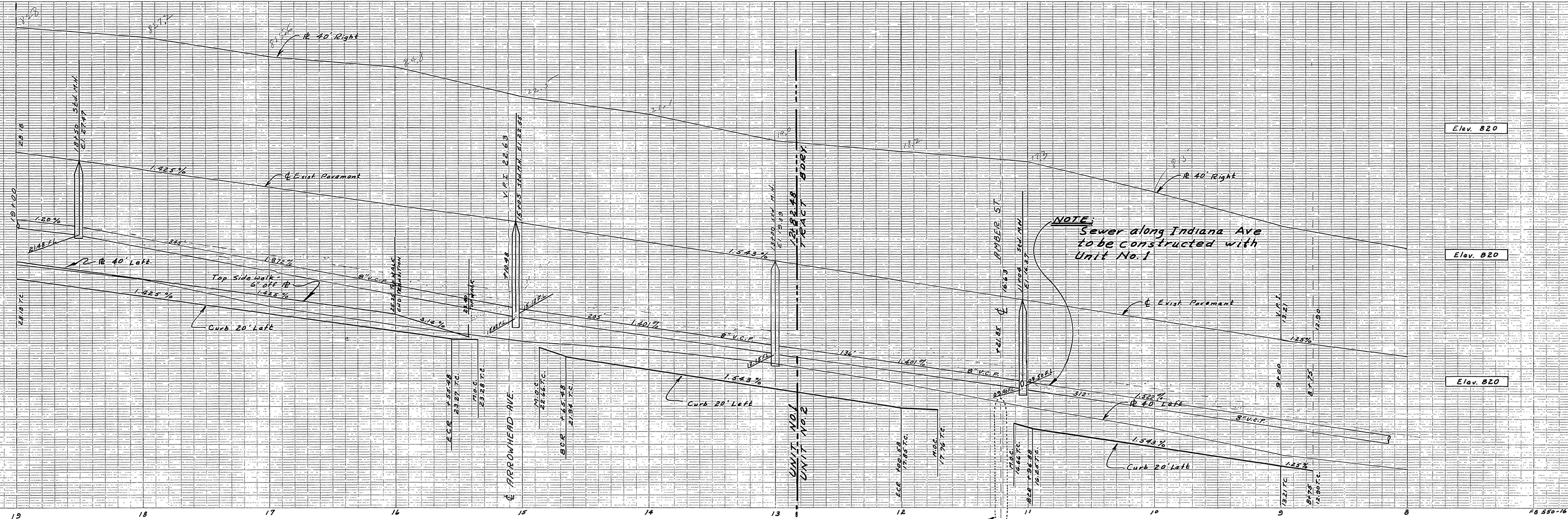
Elev. 820

Elev. 820

Elev. 820

Elev. 820

Elev. 820



NOTE:
SEE SHEET NO. 4
FOR TYPICAL SECTION SHOWING
PAVEMENT GRADING FROM STATION
15+85 TO STATION 26+63

NOTE:
SEWER ALONG INDIANA AVE
TO BE CONSTRUCTED WITH
UNIT NO. 1

FOR TYPICAL STREET SECTION
OF INDIANA AVE SEE SHEET NO. 2

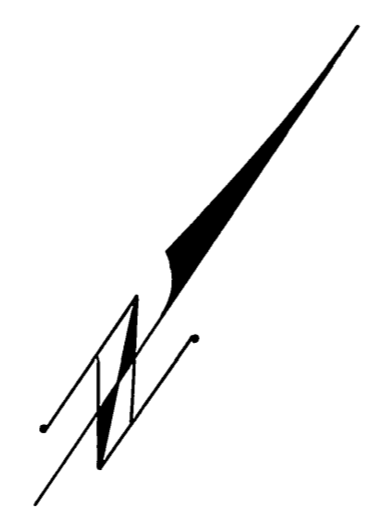
PROPERTY OF
CITY OF RIVERSIDE
DEPT. OF PUBLIC WORKS
ENGINEERING DIVISION

J.F. DAVIDSON - CIVIL ENGINEER
R.E. No. 862
RIVERSIDE, CALIFORNIA
APPROVED BY: *J. Davidson* DATE: 1-28-66

CITY OF RIVERSIDE, CALIFORNIA
DEPARTMENT OF PUBLIC WORKS
STREET SEWER PLAN & PROFILE
INDIANA AVE
AMBERWOOD TRACT

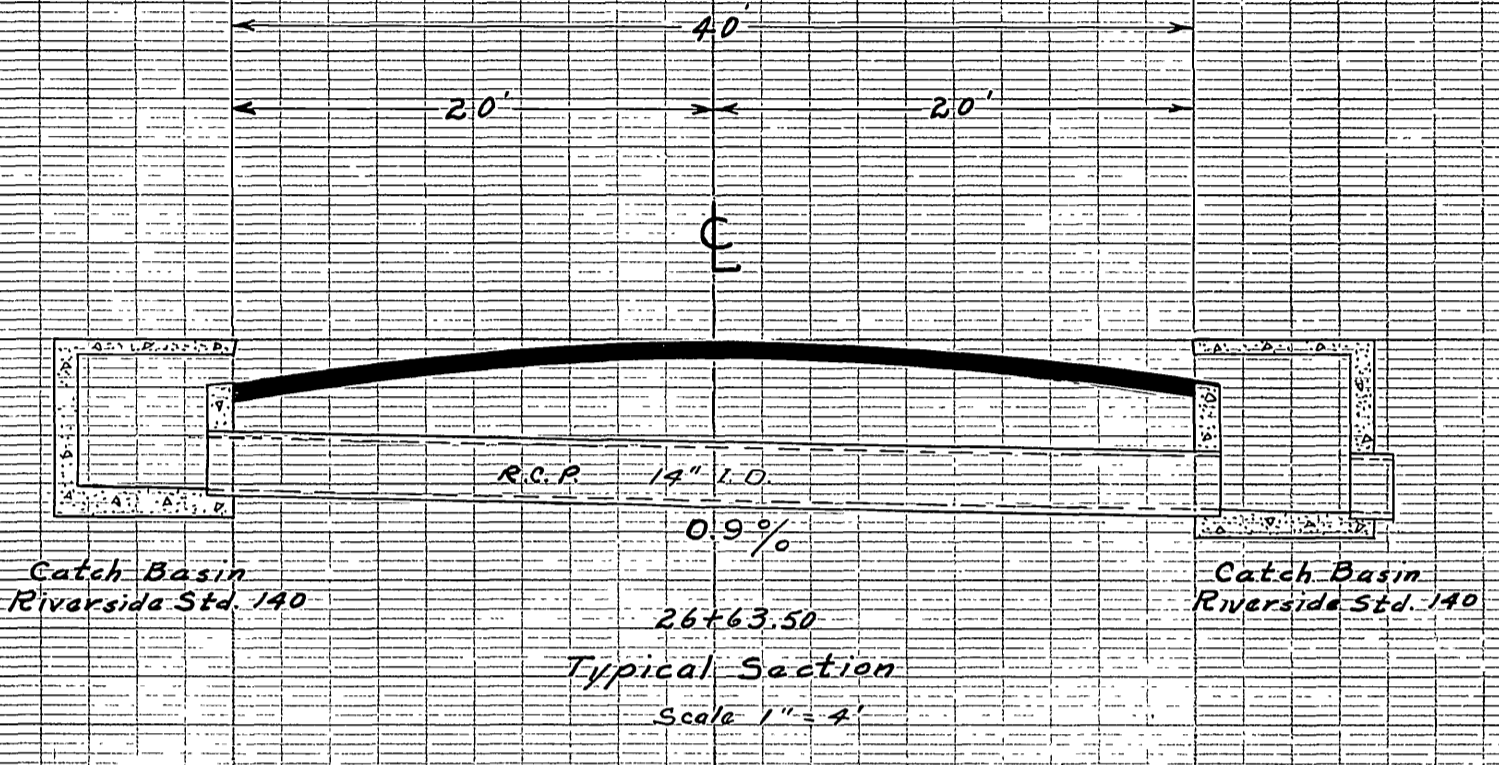
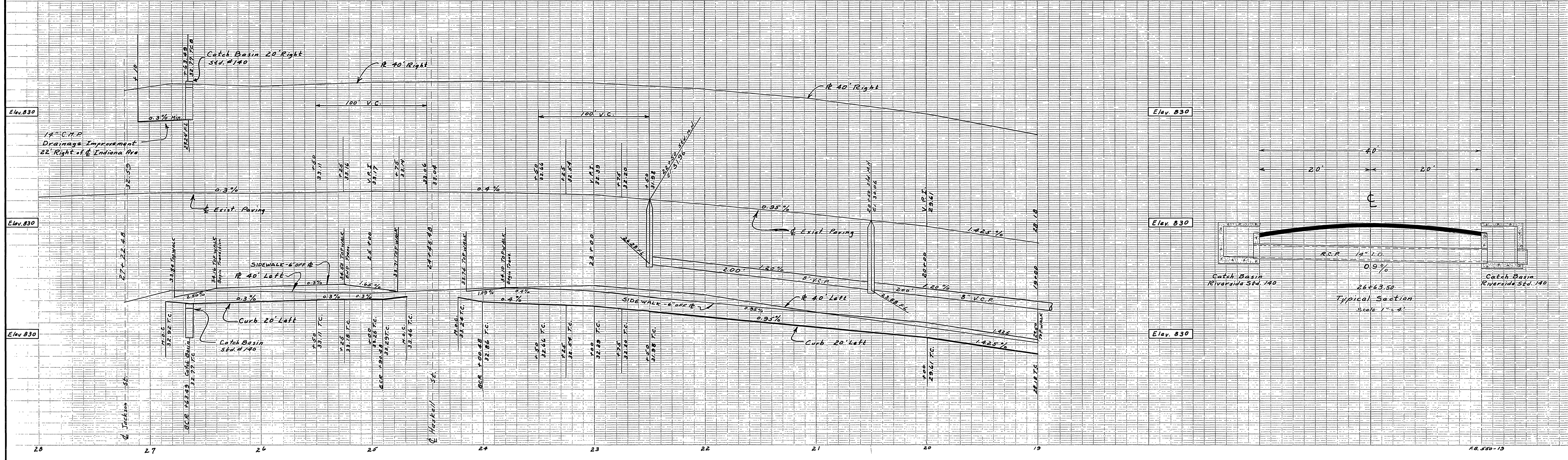
HORIZ. SCALE 1"=40' VERT. SCALE 1"=4'
APPROVED BY: *J. Davidson* NO. 5-9
Director of Public Works
DATE: 3/21/52 REVISIONS
9-10-58 "AS BUILT" USE CONNECTIONS, N.B. 11

APPROVED:
PAVEMENT GRADING FOR INDIANA
AVE. FROM STAT. 15+85 TO STAT. 26+63.
APPROVED BY: *J. Davidson*
DATE: 3/21/52

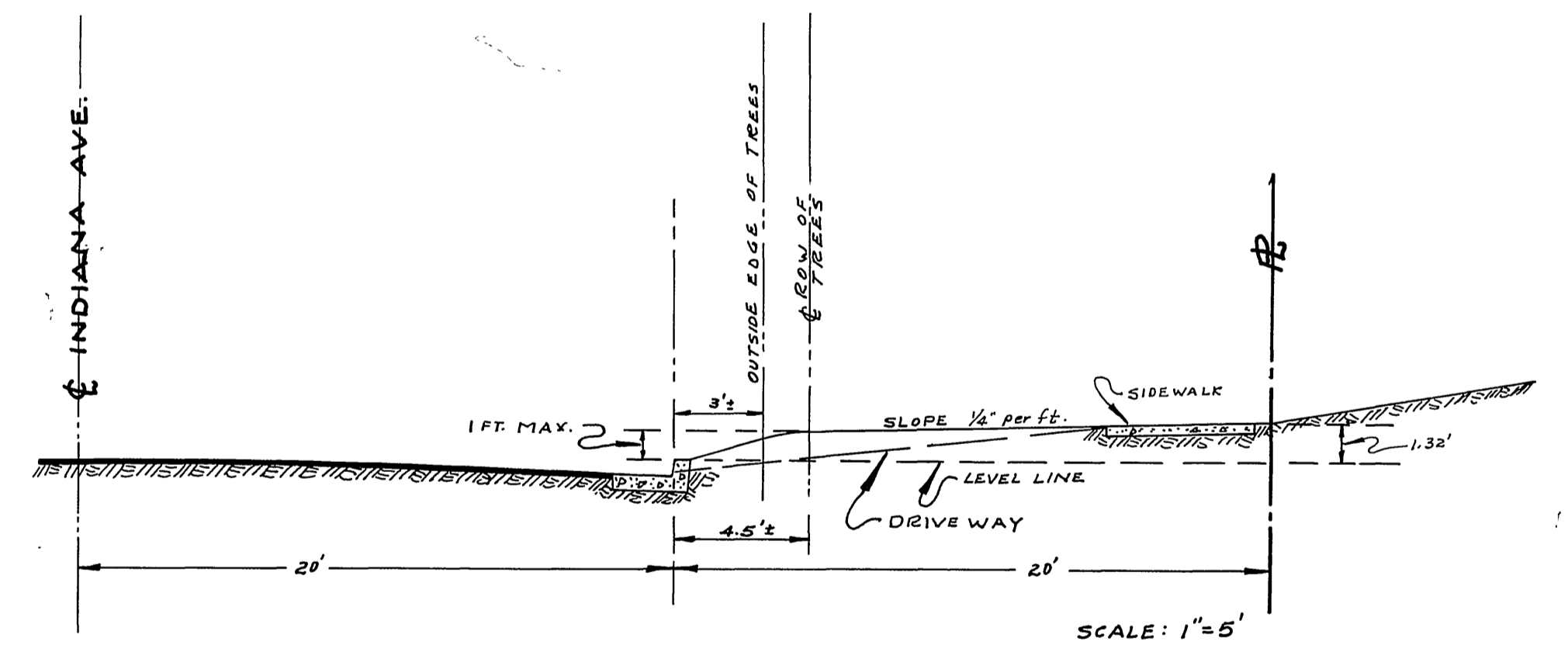
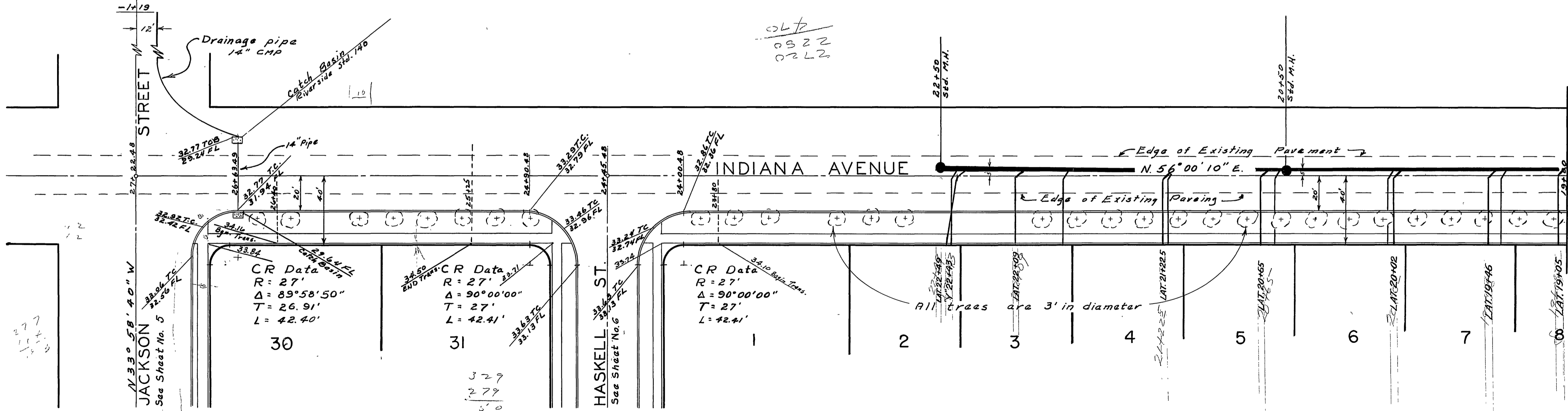


PROPERTY OF
CITY OF RIVERSIDE
DEPT. OF PUBLIC WORKS
ENGINEERING DIVISION

PROPERTY OF
CITY OF RIVERSIDE
DEPT. OF PUBLIC WORKS
ENGINEERING DIVISION



Note:
Drainage Pipe shall be installed from C.B. on Nly side of Indiana to Station -1+19 on Jackson Street. See Sheet No. 5



**TYPICAL SECTION
PARKWAY GRADING ONLY**
PARKWAY GRADING BETWEEN STATION 15+55 AND STATION 26+63. SIDEWALK TO BE AS SHOWN. GRADING FROM LOWER EDGE OF SIDEWALK TO CURB TO BE DETERMINED IN THE FIELD AT THE TIME OF CONSTRUCTION.

FOR TYPICAL ROAD SECTION SEE SHEET NO. 2

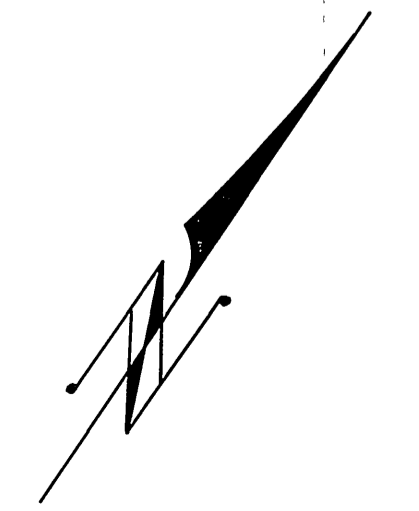
APPROVED:
PARKWAY GRADING FOR INDIANA AVE.
FROM STATION 15+55 TO STATION 26+63
APPROVED BY: *James L. Refler*
DATE: 3/21/57

PROPERTY OF
CITY OF RIVERSIDE
DEPT. OF PUBLIC WORKS
ENGINEERING DIVISION

J.F. DAVIDSON - CIVIL ENGINEER
R.E. NO. 862
RIVERSIDE, CALIFORNIA
APPROVED BY: *J. Davidson* DATE: 1-23-56
CITY OF RIVERSIDE, CALIFORNIA
DEPARTMENT OF PUBLIC WORKS
STREET & SEWER PLAN & PROFILE
INDIANA AVE
AMBERWOOD TRACT
HORIZ. SCALE: 1"=40' VERT. SCALE: 1"=4'
APPROVED BY: *J. Davidson*
Director of Public Works
DATE: 3/21/57
NO. 5-9
SHEET 4 OF 8

PROPERTY OF
CITY OF RIVERSIDE
DEPT. OF PUBLIC WORKS
ENGINEERING DIVISION

Handwritten notes and calculations:
2663.49
27
263.89
- 14
- 14
2679.09
27+22.48
18+90
8 22.48
27 22.48



Elev. 840

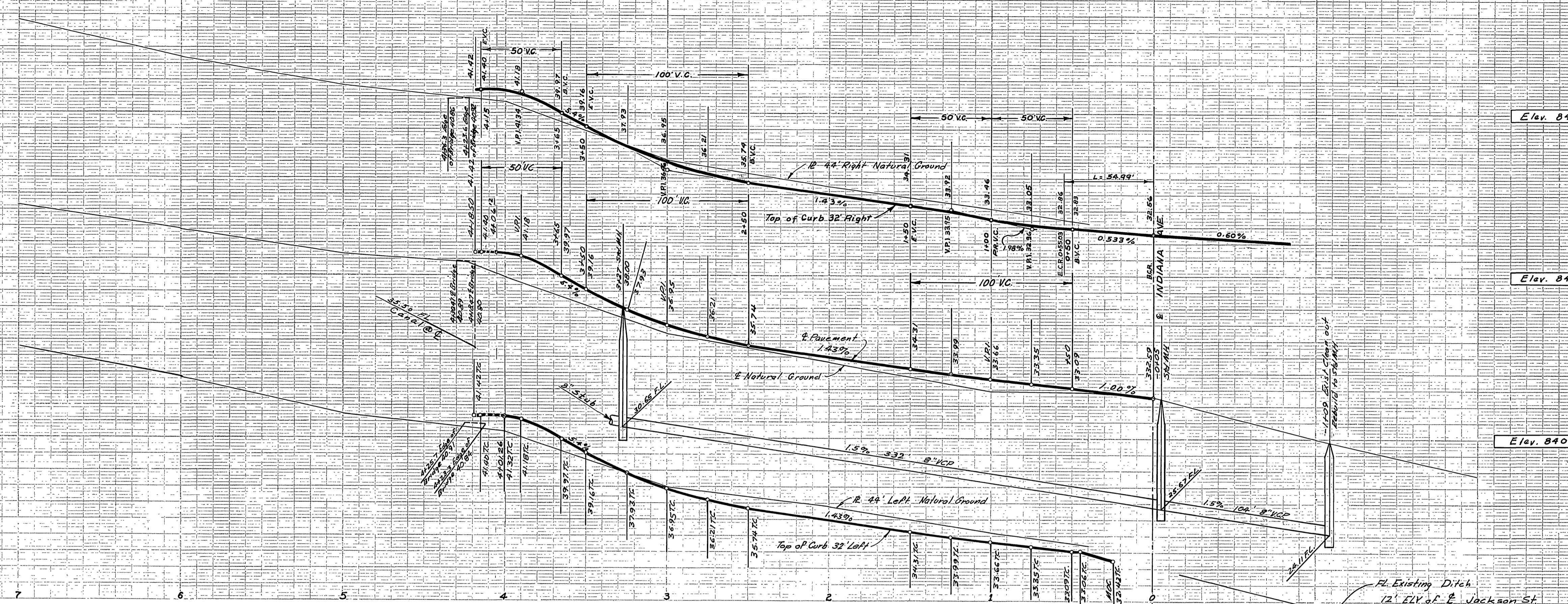
Elev. 840

Elev. 840

Elev. 840

Elev. 840

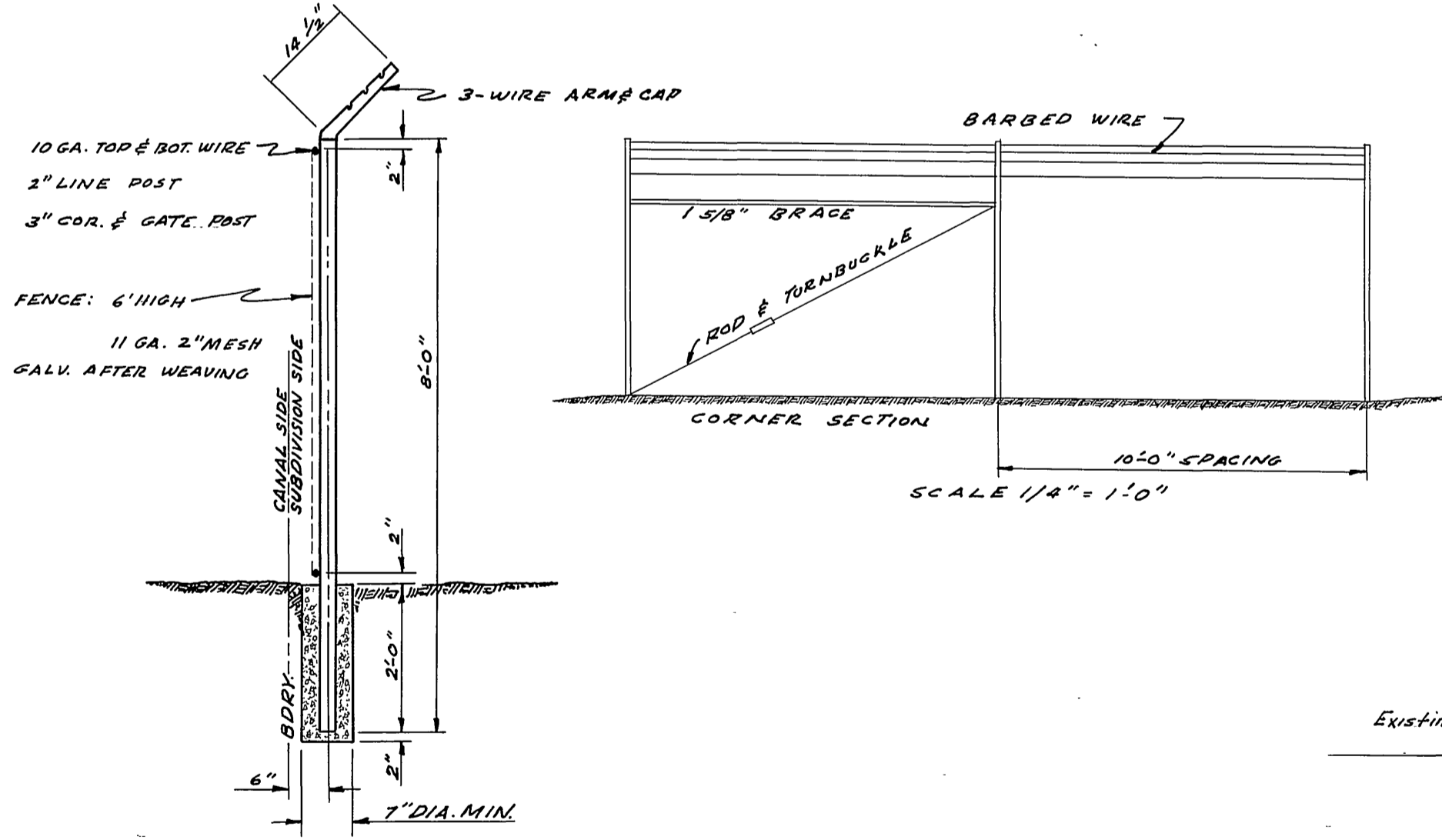
Elev. 840



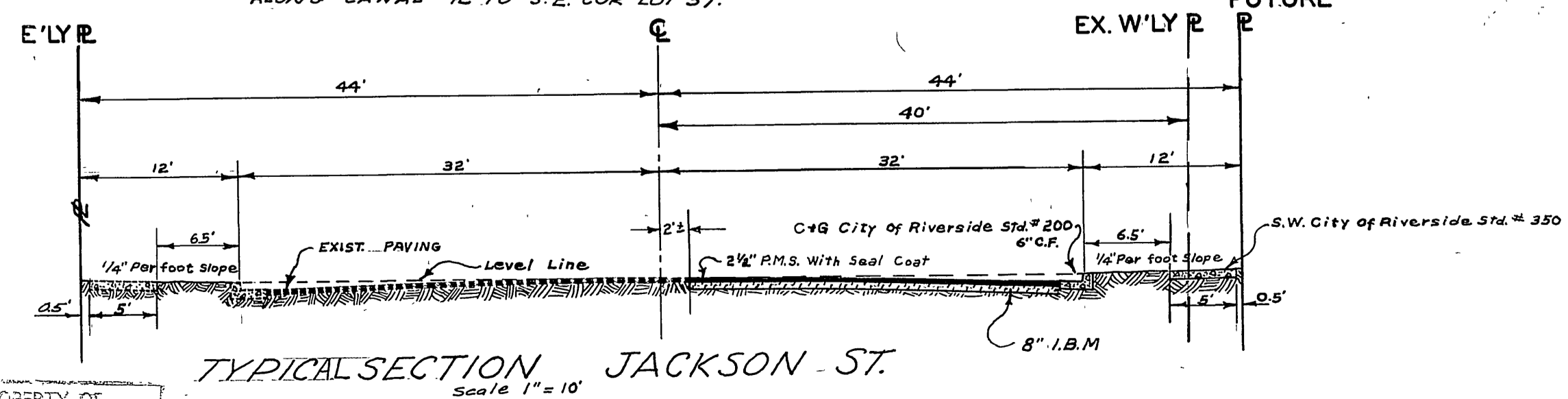
B.M. ELEV. 832.26 PK. NAIL IN NLY
CB. IND. AVE. N.W. COR. INDIANA
& JACKSON.

F.B. 616/71-74

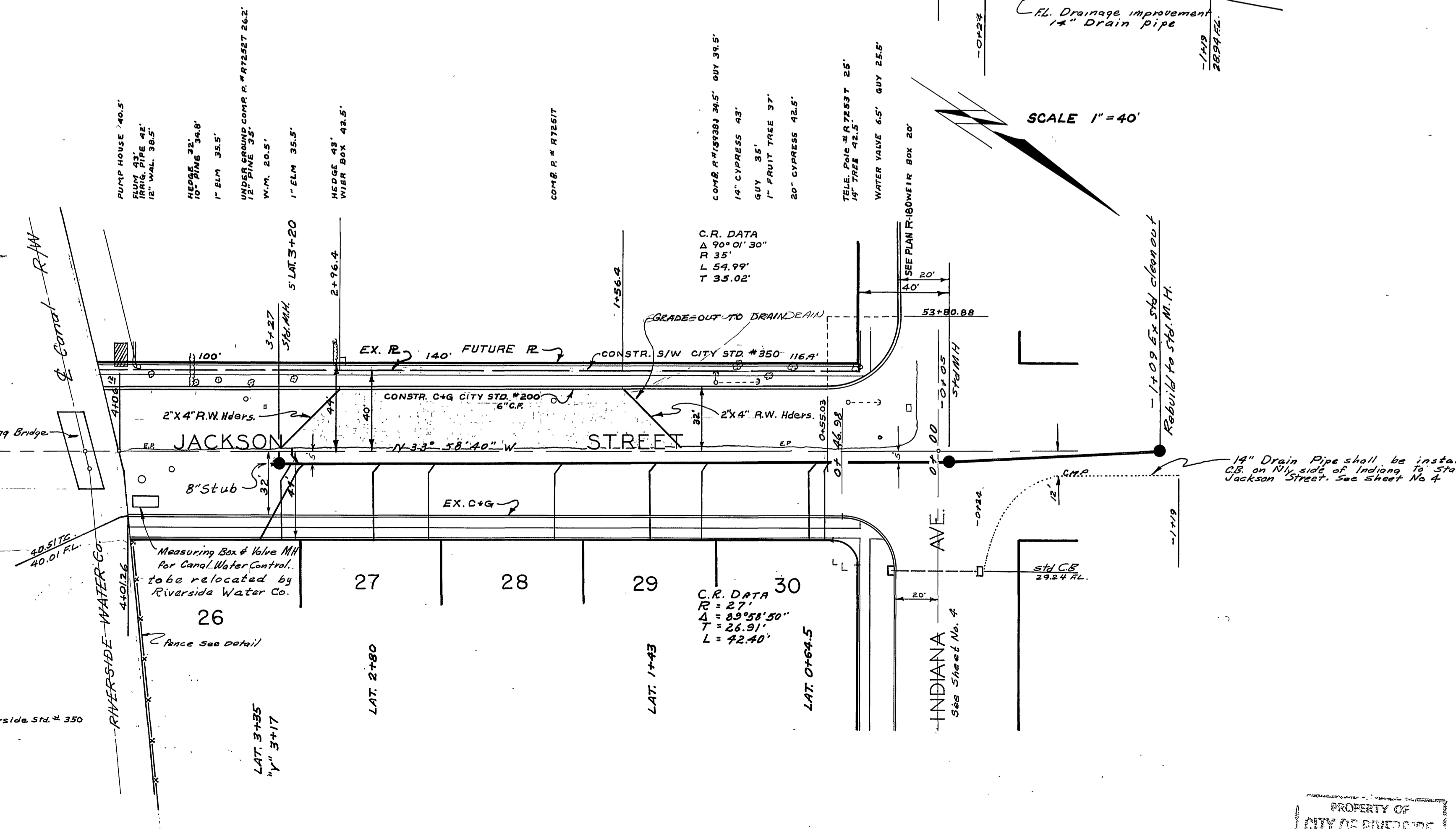
SCALE HOR. 1" = 40'
VERT. 1" = 4'



CHAIN LINK FENCE STD. 145
SCALE 1/2" = 1'-0"
FENCE SHALL BE CONSTRUCTED
CONTINUOUSLY FROM S.W. COR. LOT 26
ALONG CANAL R. TO S.E. COR. LOT 37.



TYPICAL SECTION JACKSON ST.
Scale 1" = 10'



SCALE 1" = 40'

J.F. DAVIDSON - CIVIL ENGINEER
RIVERSIDE, CALIFORNIA
APPROVED BY *J. Davidson* DATE 1-23-76
CITY OF RIVERSIDE, CALIFORNIA
DEPARTMENT OF PUBLIC WORKS
STREET & SEWER PLAN & PROFILE
JACKSON STREET

AMBERWOOD TRACT
HORIZ. SCALE 1" = 40' VERT. SCALE 1" = 4'

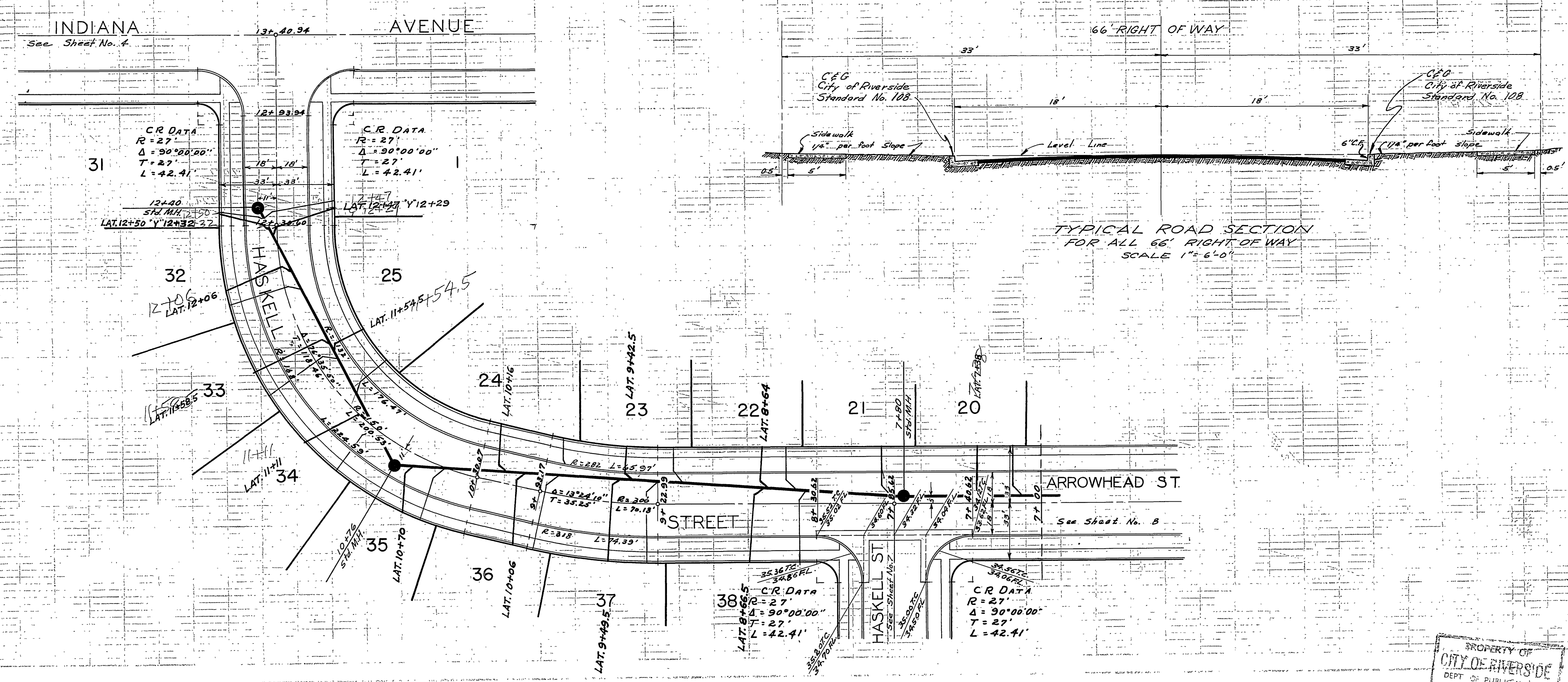
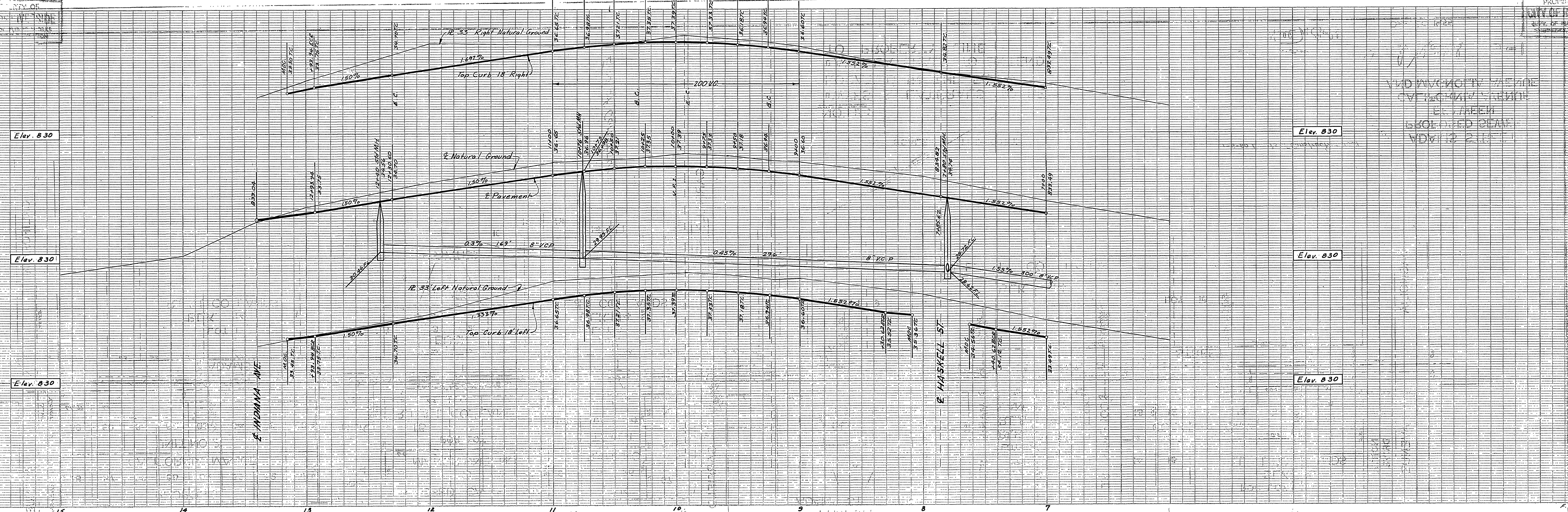
DATE	REVISIONS
FEB. 18, 79	ADDED TOPO, CURB & GUTTER AND SIDEWALK ON W'LY SIDE OF JACKSON ST.

APPROVED BY *J. Davidson*
Director of Public Works
DATE 2/15/79
NO. 5-9
SHEET 5 OF 8

DESIGNED BY CITY OF RIVERSIDE ENGINEERING DIVISION
 DRAWN BY J. F. DAVIDSON
 CHECKED BY J. F. DAVIDSON
 DATE 12/25/10

PROPERTY OF
 CITY OF RIVERSIDE
 DEPT. OF PUBLIC WORKS
 ENGINEERING DIVISION

PROPERTY OF
 CITY OF RIVERSIDE
 DEPT. OF PUBLIC WORKS
 ENGINEERING DIVISION



J.F. DAVIDSON - CIVIL ENGINEER
 R.E. No. 562
 RIVERSIDE, CALIFORNIA
 APPROVED BY *J.F. Davidson* DATE 12-23-10

CITY OF RIVERSIDE, CALIFORNIA
 DEPARTMENT OF PUBLIC WORKS

STREET & SEWER PLAN & PROFILE
 HASKELL STREET
 AMBERWOOD TRACT

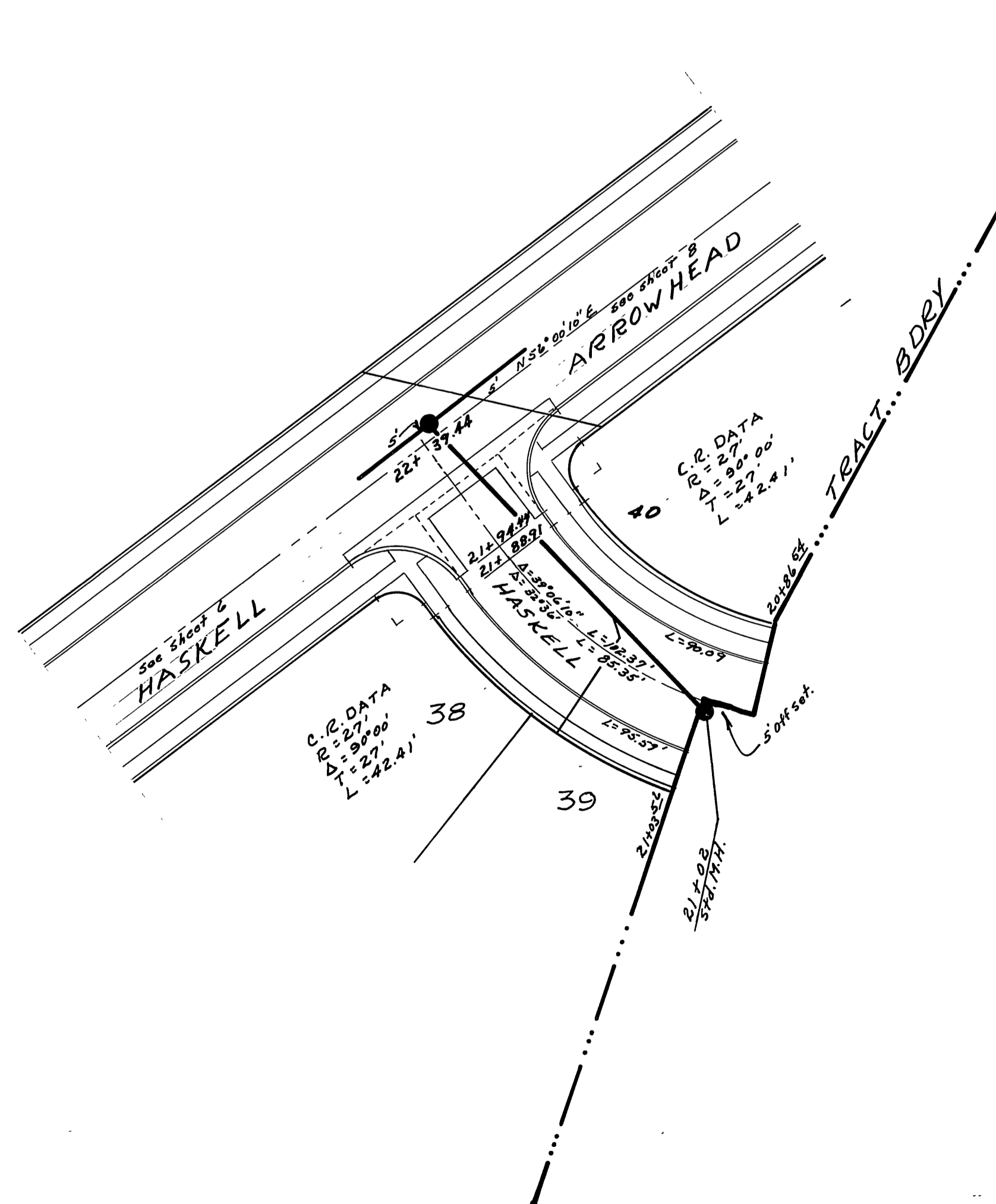
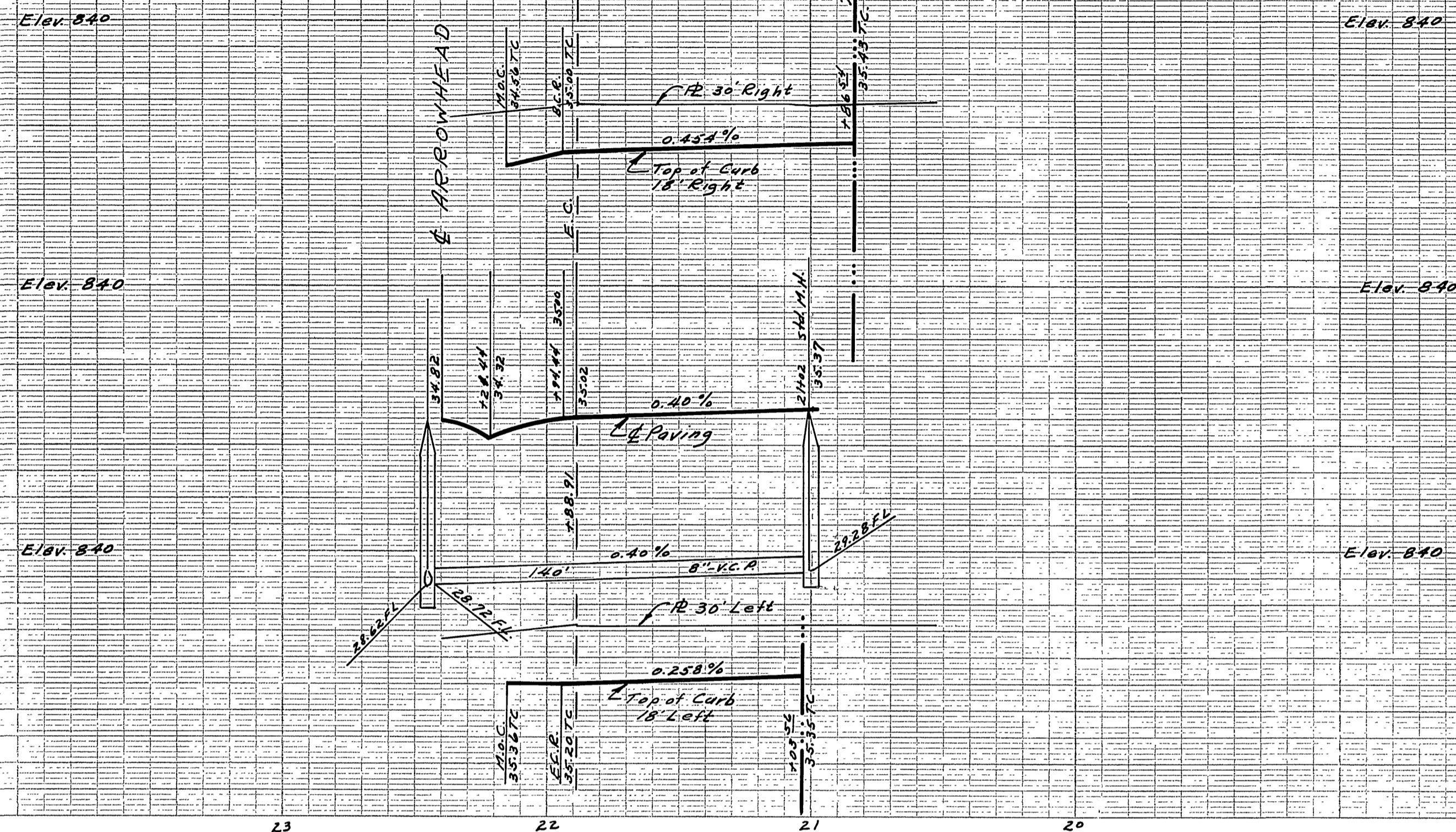
HORIZ. SCALE 1"=30' VERT. SCALE 1"=4'

APPROVED BY *J.F. Davidson*
 Director of Public Works
 DATE 12/25/10

NO. 5-9
 SHEET 6 OF 8

PROPERTY OF
 CITY OF RIVERSIDE
 DEPT. OF PUBLIC WORKS
 ENGINEERING DIVISION

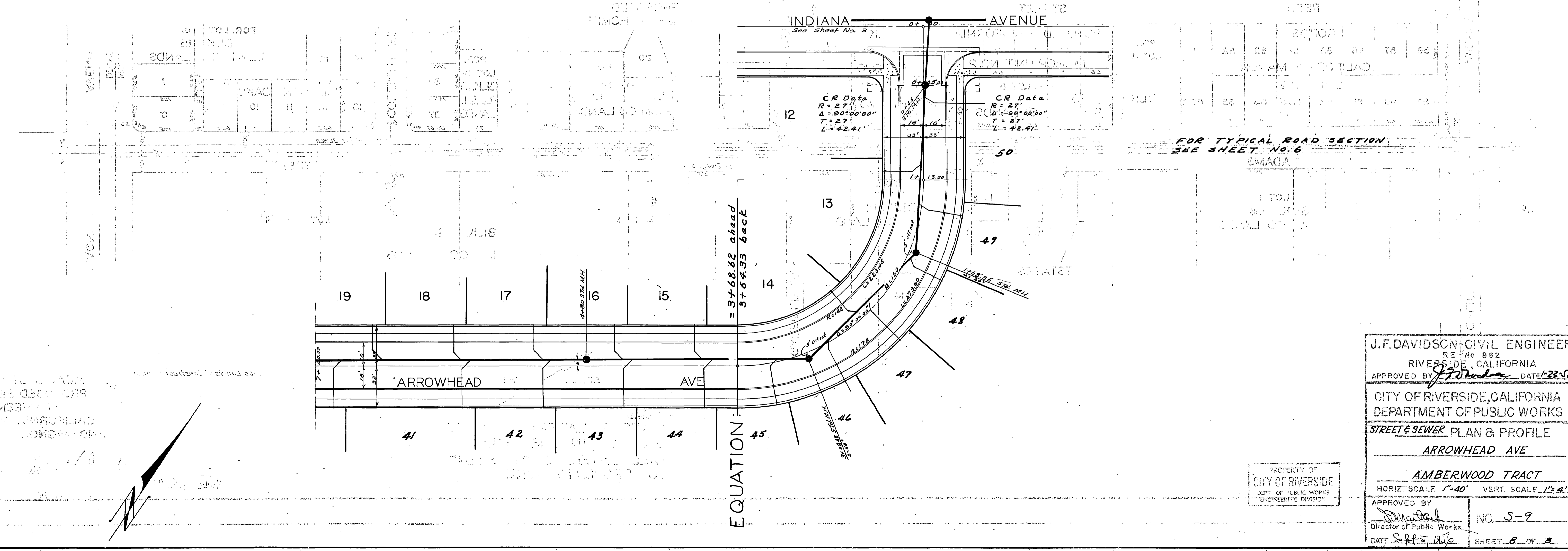
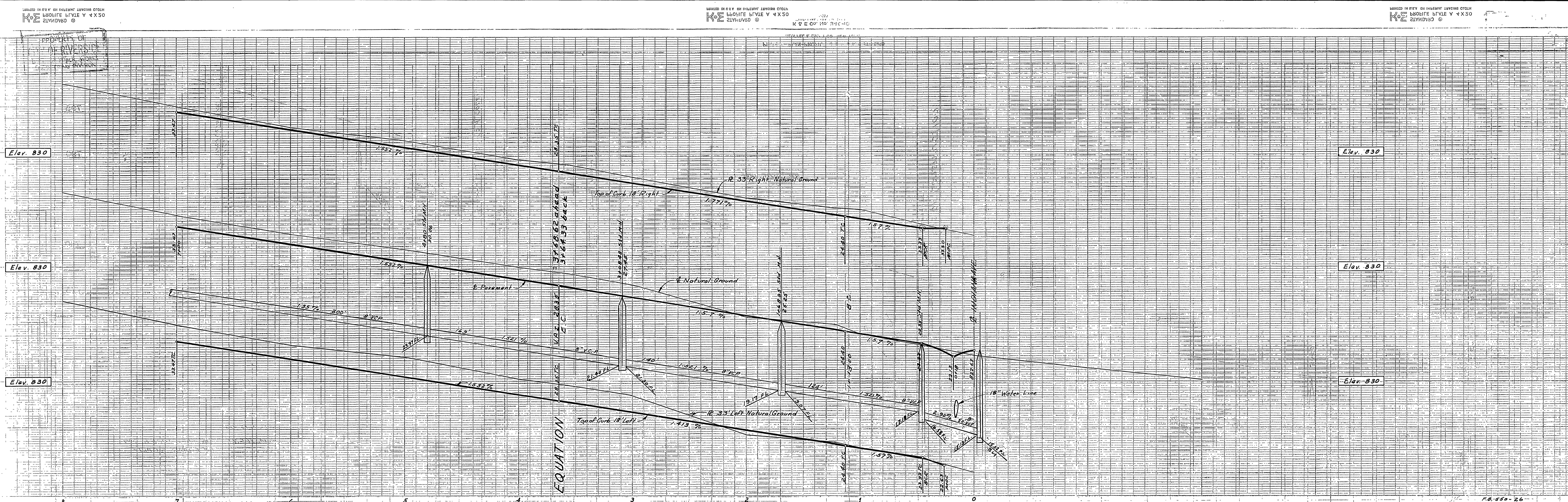
PROPERTY OF
 CITY OF RIVERSIDE
 DEPT. OF PUBLIC WORKS
 ENGINEERING DIVISION



FOR TYPICAL ROAD SECTION SEE SHEET NO. 6



J.F. DAVIDSON - CIVIL ENGINEER
R.E. No. 862
RIVERSIDE, CALIFORNIA
APPROVED BY *J.F. Davidson* DATE 23 May 56
CITY OF RIVERSIDE, CALIFORNIA
DEPARTMENT OF PUBLIC WORKS
STREET & SEWER PLAN & PROFILE
HASKELL STREET
AMBERWOOD TRACT
HORIZ. SCALE 1" = 40' VERT. SCALE 1" = 2'
APPROVED BY *J.F. Davidson* NO. S-9
Director of Public Works
DATE Sept 5, 1956 SHEET 7 OF 8



J.F. DAVIDSON - CIVIL ENGINEER
 R.E. No. 862
 RIVERSIDE, CALIFORNIA
 APPROVED BY *J.F. Davidson* DATE 1-28-56
 CITY OF RIVERSIDE, CALIFORNIA
 DEPARTMENT OF PUBLIC WORKS
 STREET & SEWER PLAN & PROFILE
 ARROWHEAD AVE
 AMBERWOOD TRACT
 HORIZ. SCALE 1"=40' VERT. SCALE 1"=4'
 APPROVED BY *J.F. Davidson*
 Director of Public Works
 DATE 1-28-56
 NO. 5-9
 SHEET 8 OF 8

CITY OF RIVERSIDE
 DEPT. OF PUBLIC WORKS
 ENGINEERING DIVISION

