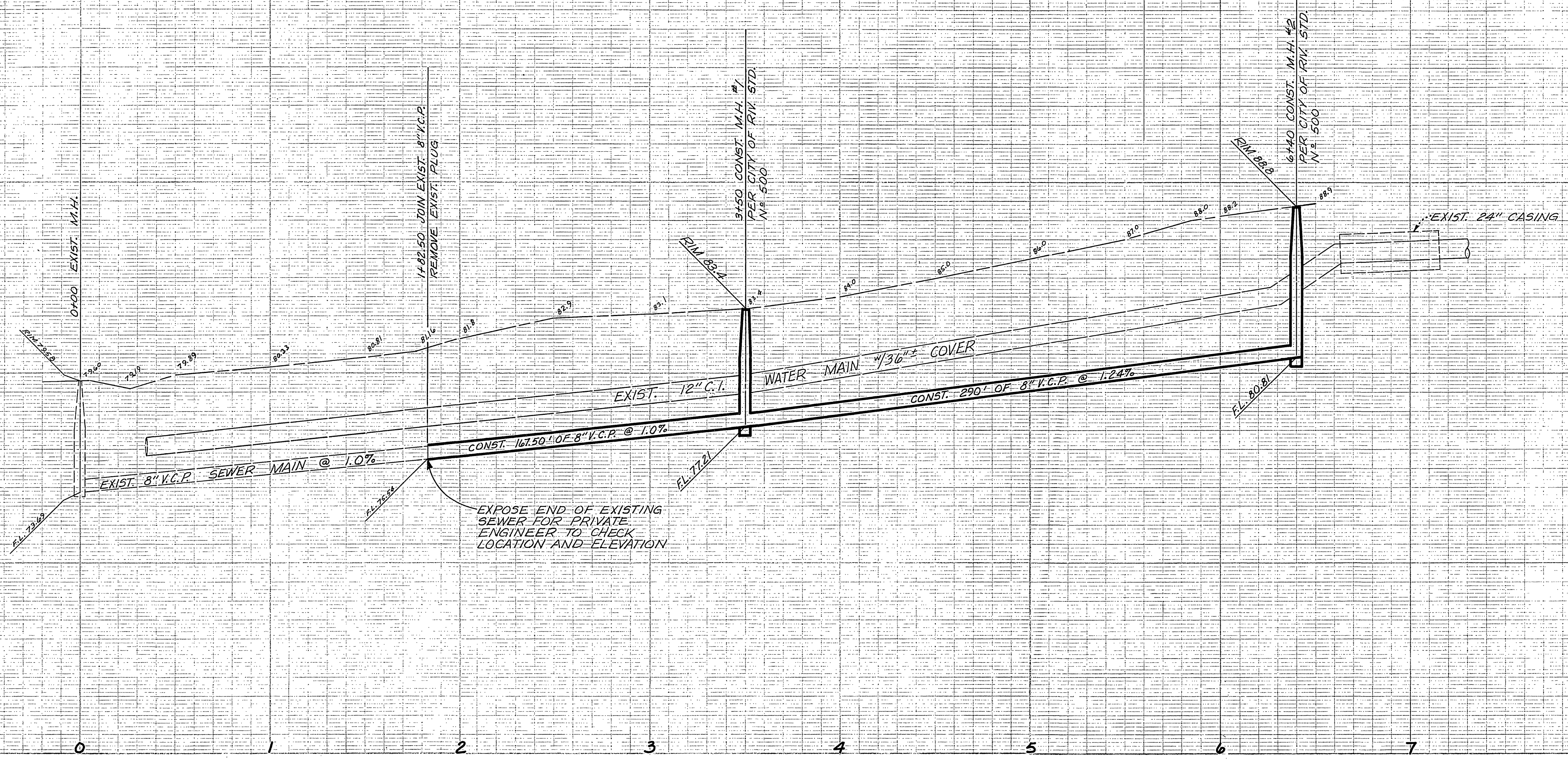
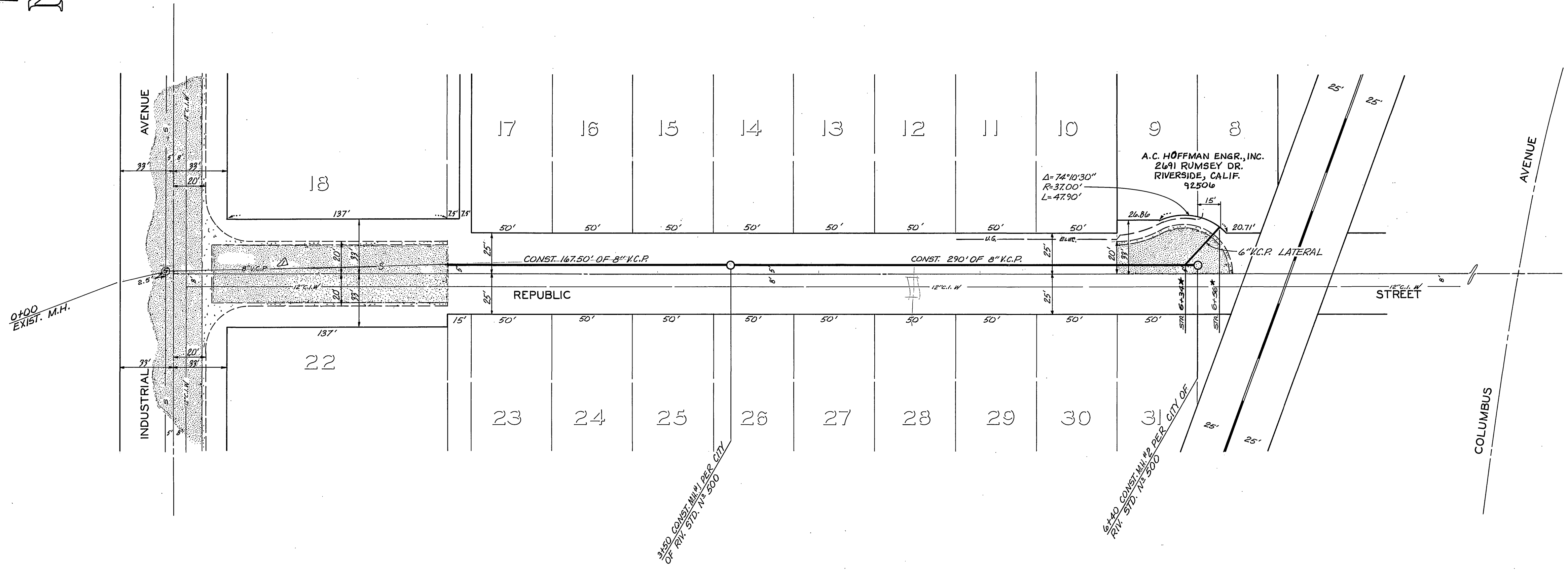
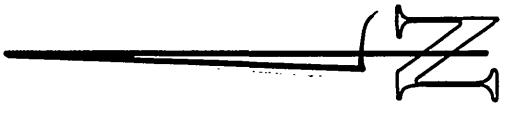


790
788
786
784
782
780
778
776
774
772
770

790
788
786
784
782
780
778
776
774
772
770



EXPOSE END OF EXISTING SEWER FOR PRIVATE ENGINEER TO CHECK LOCATION AND ELEVATION



BENCH MARK:
R.R. spike in P/Pole #15107-S, N.E. corner Industrial and Fremont, C/R F.B. 930/24 Elev. = 776.97
T.B.M. (This project only) Lead and tack in S.E. curb return M.O.C. Republic and Industrial. Elev. = 779.80
Chiseled " " end curb at Sta. 6+58.3 @ Republic produced. Elev. = 789.37

GENERAL NOTES

- (1) All construction shall be in accordance with the standard Specifications for Public Works Construction 1970 Edition and Standard Drawings of the City of Riverside, Department of Public Works.
- (2) Location of all wyes and laterals to be located in the field at the direction of the owner. Avoid conflict with proposed and/or existing facilities.
- (3) M. H. Rims to be set at existing pavement grades.
- (4) All sewer laterals on west side of street shall be encased or C.I.P. as per CWD-023 Public Utilities Dept.

NOTE:
The private engineer has made a diligent and reasonable effort to determine the locations and extent of all existing utilities in the area of construction. All underground utilities or structures reported by the owner of others and those shown on the records examined are indicated with their approximate location and extent as furnished by the appropriate utility company. The owner by accepting these plans or proceeding with improvements pursuant thereto agrees to assume liability and to hold undersigned harmless for any damages resulting from the existence of underground utilities or structures not reported to the undersigned; not indicated on the public records examined; located at variance with that recorded or shown on records examined.

J. F. DAVIDSON ASSOCIATES
CIVIL ENGINEERS - SURVEYORS - PLANNERS
RIVERSIDE, CALIFORNIA

APPROVED BY: *Howard A. Dean* 10-19-72
CHIEF UTILITY ENGR. DATE

APPROVED BY: *Robert J. Geyer* DATE 10-12-72
R.E. No. 13685

AS BUILT	EAB 4-73
REVISIONS	DATE
DESIGNED BY: A.E.W.	DRAWN BY: M.W.C.
CHECKED BY: M.W.C.	

CITY OF RIVERSIDE, CALIFORNIA
DEPARTMENT OF PUBLIC WORKS

APPROVED BY: *[Signature]* DATE 11-14-72
OFFICE ENGINEER
TRAFFIC DIVISION
ASSISTANT CITY ENGR.

SEWER PLAN AND PROFILE
REPUBLIC STREET
SEWER EXTENSION
FROM 180' TO 640' S.W. OF INDUSTRIAL

PROJECT NO. 32-577-511
5-901
SHEET 1 OF 1
FILE NO. 4451

HORIZ. SCALE: 1" = 40' VERT. SCALE: 1" = 4'

W.D. 9925 FOR A.C. HOFFMAN ENGR., INC. F.B. 10/25/70