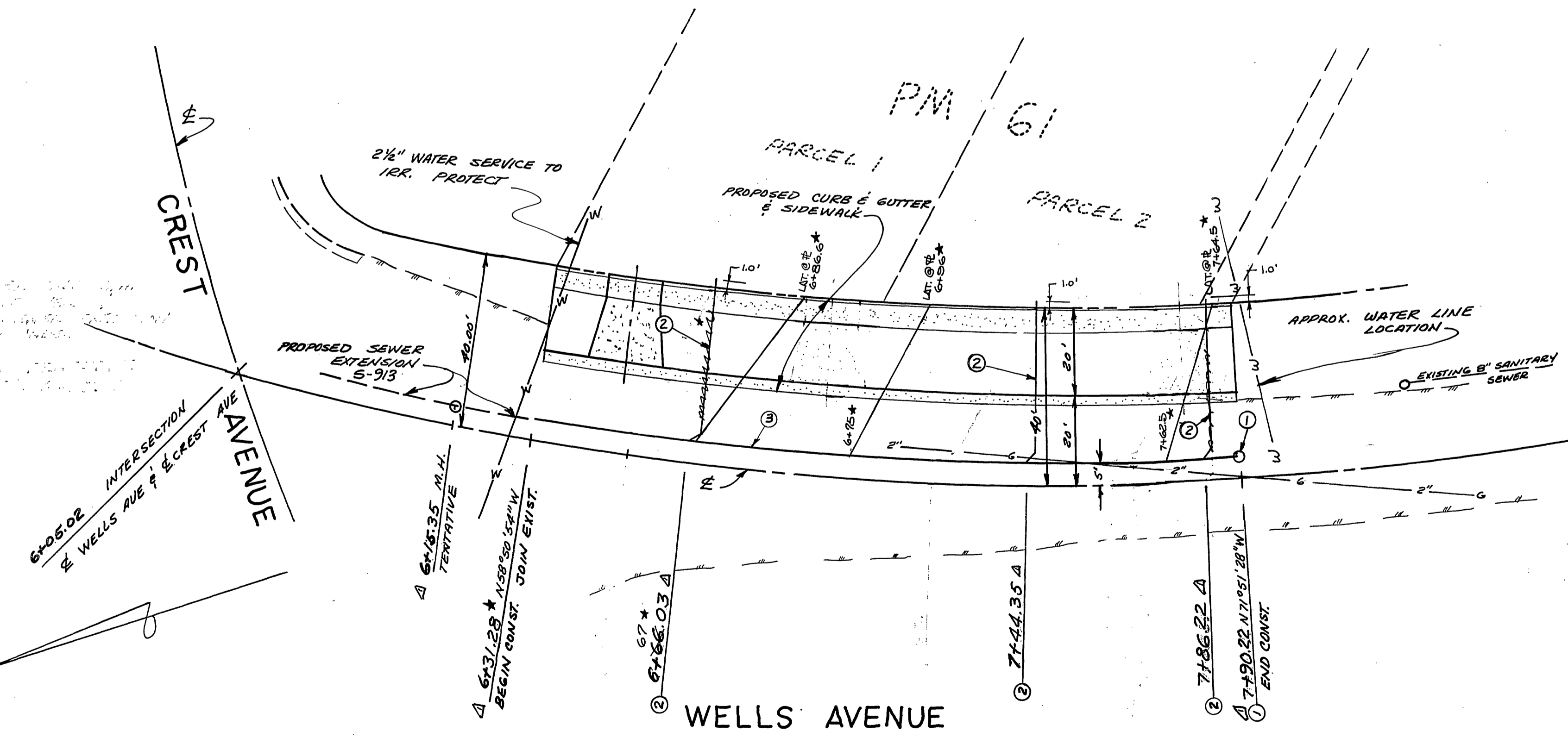
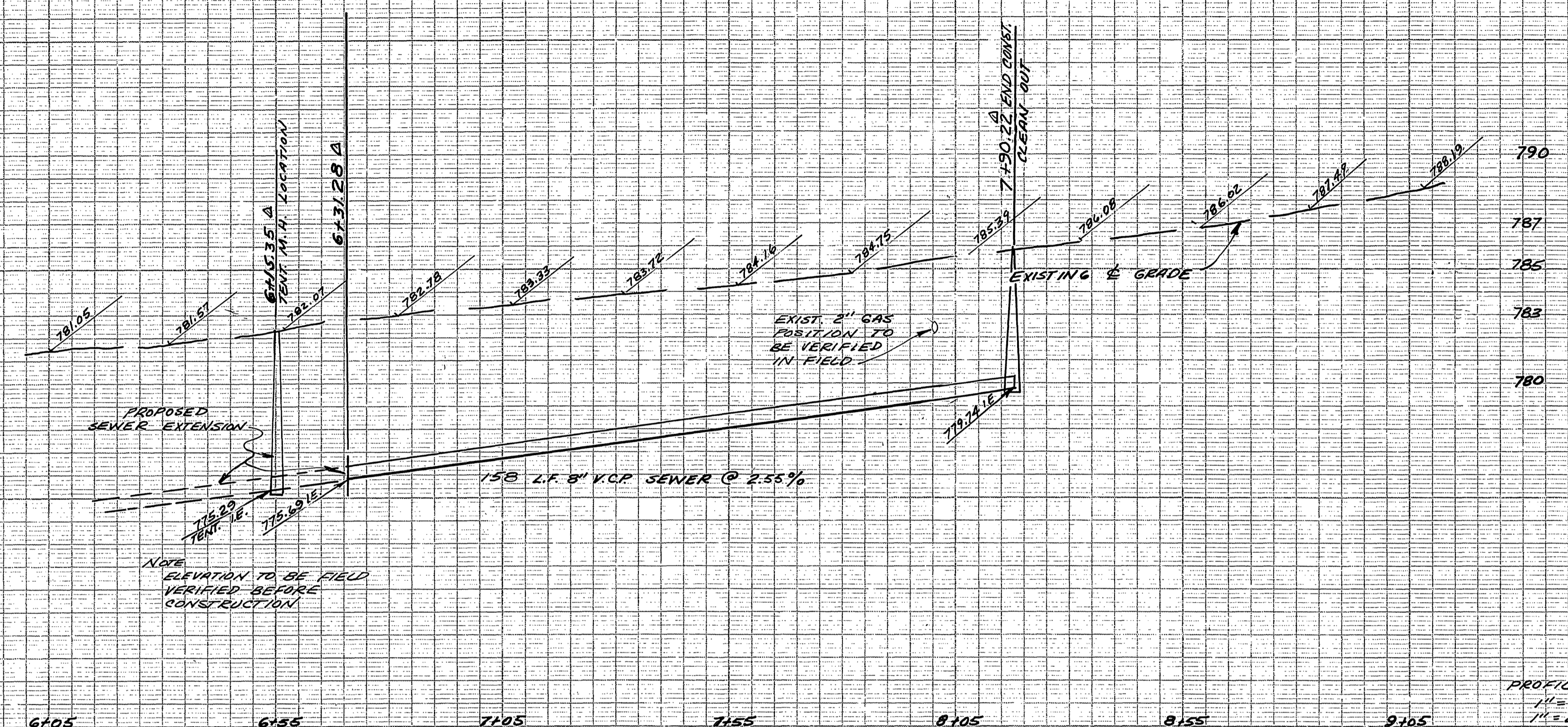


GENERAL NOTES

CONSTRUCTION SHALL BE IN ACCORDANCE WITH STANDARD SPECIFICATIONS FOR PUBLIC WORKS CONSTRUCTION 1970 EDITION, AND CITY OF RIVERSIDE STANDARD DWGS.

THE CONTRACTOR SHALL DETERMINE THE TRUE LOCATION OF ANY UNDERGROUND UTILITIES PRIOR TO LAYING ANY LINES WHICH ARE TO CONNECT TO EXISTING SEWER OR WATER LINES. THESE LINES SHALL BE EXPOSED AND JOIN POSITIONS VERIFIED. THE CONTRACTOR SHALL LOCATE AND PROTECT ALL UNDERGROUND UTILITIES.

LATERAL TO BE LOCATED BY OWNER AT TIME OF CONNECTION.



SANITARY SEWER CURVE DATA
R=695' Δ=13°00'34"
L=157.80' T=79.24'

SEWER CURVE DATA
R=700' Δ=13°00'34"
L=158.94' T=79.81'

CONSTRUCTION NOTES:

1. CONSTRUCT CLEANOUT PER CITY STANDARD DWG 560
2. INSTALL 4" V.C.P. HOUSE CONNECTION PER STD 562
3. INSTALL 8" V.C.P. SANITARY SEWER CASE I BEDDING PER STD DWG 452 UNLESS OTHERWISE SPECIFIED

SALKIN ENGINEERING CORPORATION
1045 W. COLLINS AVE
ORANGE, CALIFORNIA
(714) 633-7261

Samuel Salkin
SAMUEL SALKIN, P.E. 13480
Lic. Nov. 1972
DATE

BUL. TAX REG. #7-45714

APPROVED:
Samuel Salkin 1-18-73
WATER DIVISION

REVISED STA PER 3-21-73	5473
DESIGNED BY: RFD. DRAWN BY: RFD. CHECKED BY: W.	

CITY OF RIVERSIDE, CALIFORNIA DEPARTMENT OF PUBLIC WORKS	
APPROVED BY:	DATE: 1/19/73
OFFICE ENGINEER: <i>W. J. [Signature]</i>	
TRAFFIC DIVISION	
DESIGNER: RFD. DRAWN BY: RFD. CHECKED BY: W.	

SEWER IMPROVEMENTS WELLS AVENUE FOR P.M. 61	
HORIZ SCALE 1" = 20'	VERT SCALE 1/2" = 4'

PROJECT NO 6-902
SHEET 1 OF 1
FILE NO