

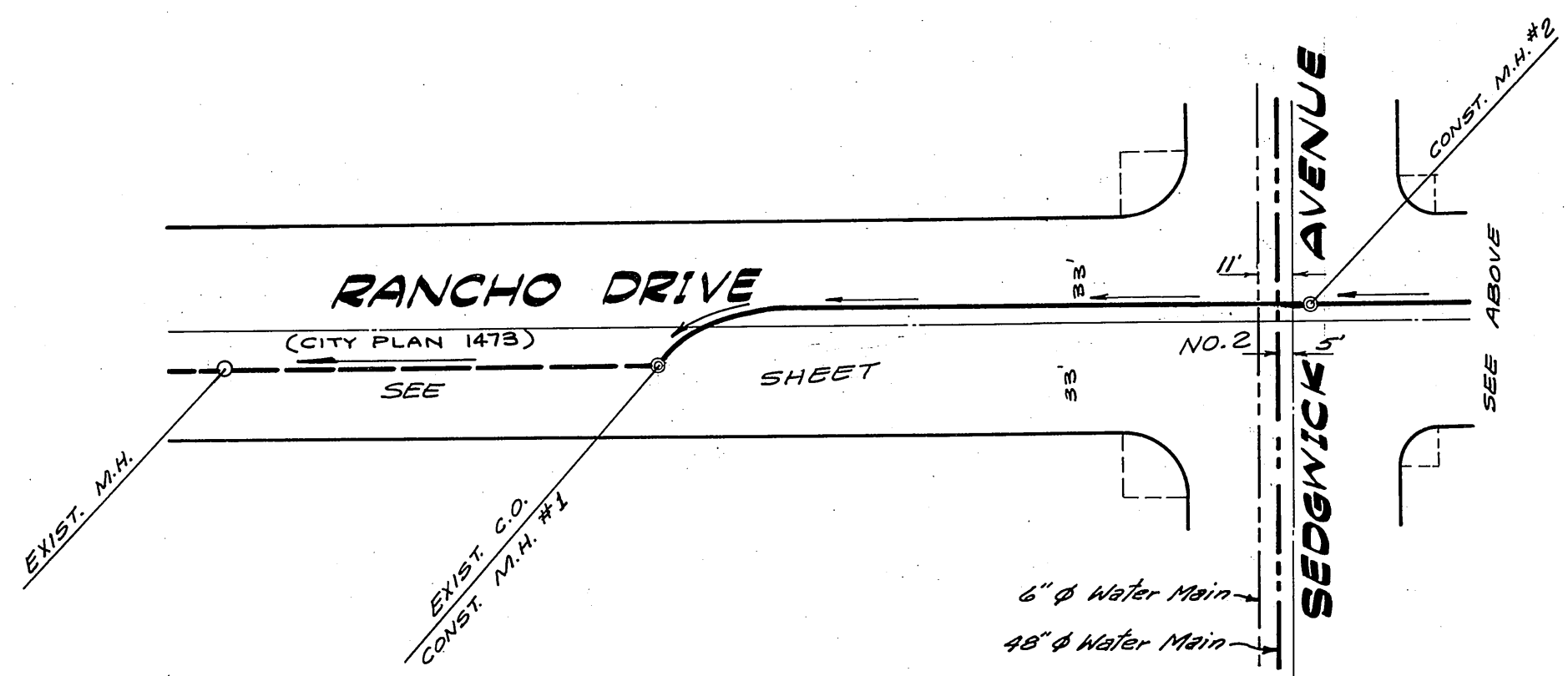


**GENERAL NOTES:**

1. Construction shall be in accordance with the Standard Specifications for Public Works Construction, 1976 Edition, and City of Riverside Standard Drawings.
2. It shall be the responsibility of the contractor to determine the right of way in accordance with the provisions of the City Ordinance and at no cost to the City.
3. Pipe shall be bedded per Case 1, Standard Specifications, unless otherwise specified on plan.
4. Location of wyes and laterals to be detailed at the direction of the owner at the time of construction.
5. All stubs and laterals to be constructed in accordance with Standard Drawing No. 102. Stubs shall be 30' long.
6. Multiple trunks are allowed to be installed by the Sewer Contractor after the final paving of the streets.
7. Laterals are to be 4" and extended to 10'.
8. Prior to construction of sewer, Contractor shall contact Engineer for verification.
9. A plug shall be installed and will remain in place where the new sewer connects to the existing sewer until the new sewer is accepted by the City.
10. The private engineer signing these plans is responsible for the accuracy and acceptability of the work hereon. In the event of discrepancies arising during construction, the private engineer shall be responsible for determining an acceptable solution and revising the plans for approval by the City.

**NOTICE TO CONTRACTOR:**

The existence and location of all underground utility pipes or structures shown on these plans are shown by a search of the available records. To the best of our knowledge, there are no existing utilities except as shown on these plans. The Contractor is required to take all precautionary measures to protect the utility line or not shown on these plans.

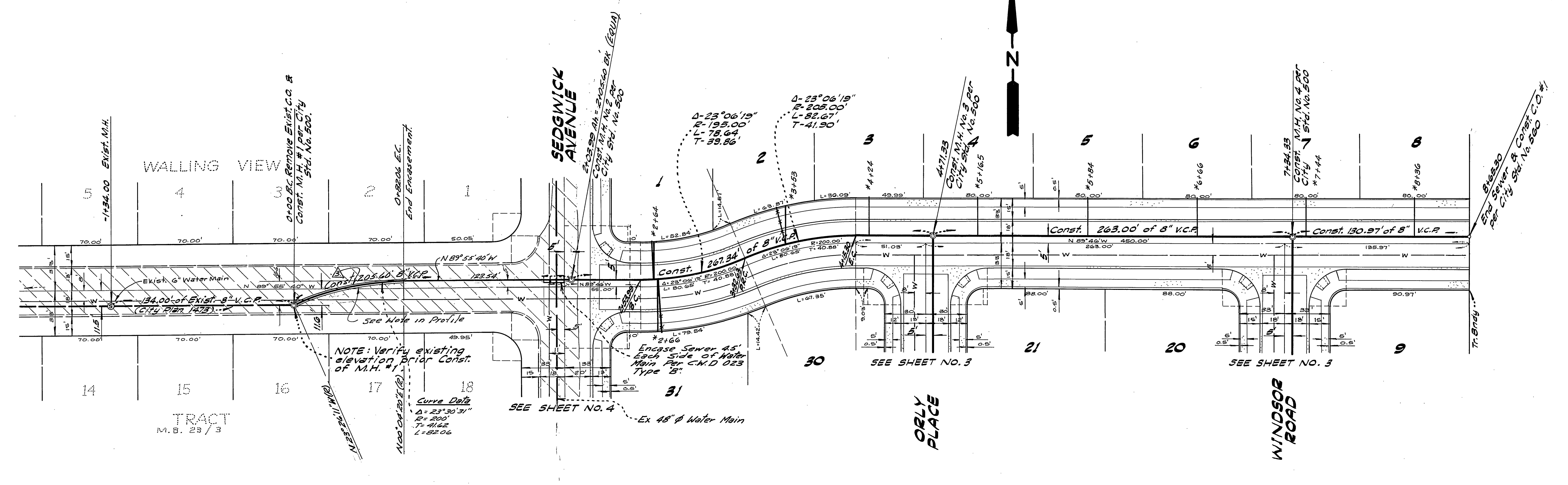
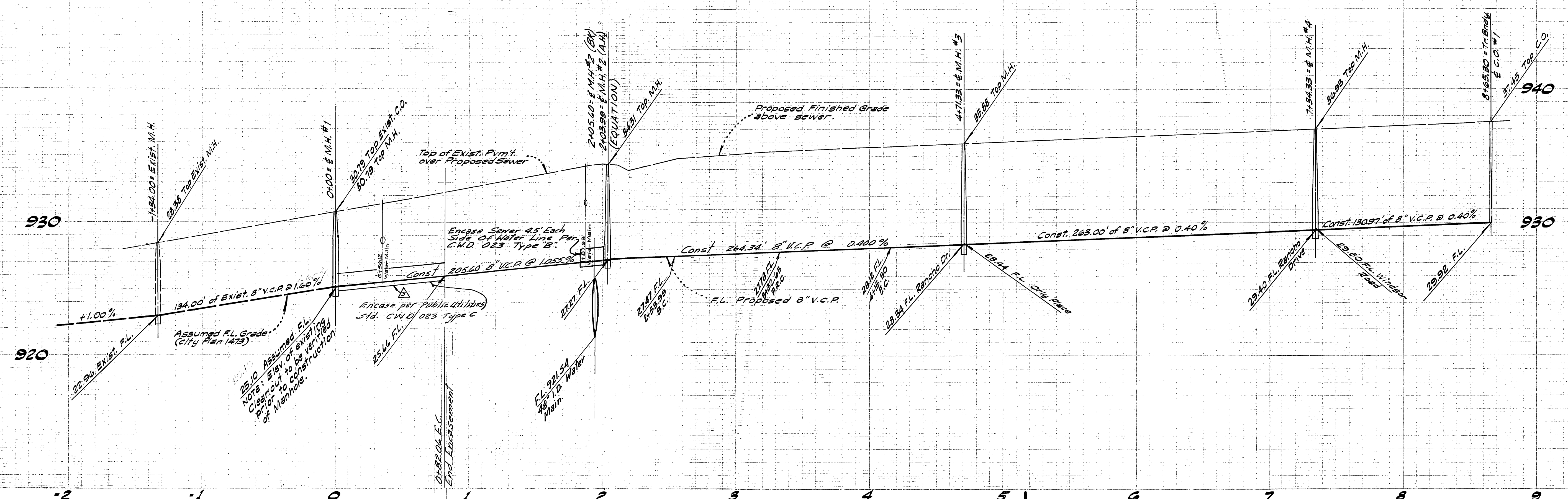


Approved By  
*Wally Hill* 11-23-76  
 Chief Utilities Engineer - Water

\*AS BUILT 6-77 KET

**BENCH MARK:**  
 Top of Iron Pipe @ the center-line intersection of RANCHO DR. and SEDGWICK AVE., City of Riverside P.B. 559/3. ELEV. = 934.32'

CITY OF RIVERSIDE WATER DEPT. APPROVED BY: <i>[Signature]</i> 12-14-72	ALBERT A. WEBB ASSOCIATES CIVIL ENGINEERS RIVERSIDE, CALIFORNIA APPROVED BY: <i>[Signature]</i> DATE: 10/17/72 R.E. No. 9876	Approved By <i>Wally Hill</i> 11-23-76 Chief Utilities Engineer - Water	CITY OF RIVERSIDE, CALIFORNIA DEPARTMENT OF PUBLIC WORKS APPROVED BY: <i>[Signature]</i> DATE: 12/28/72 OFFICE ENGINEER PARK DEPARTMENT TRAFFIC DIVISION ASSISTANT CITY ENG.	SEWER PLAN & PROFILE INDEX MAP TRACT NO. 4494-7819 HORIZ. SCALE: 1" = 40' VERT. SCALE: 1" = 40'	INDEXED PROJECT NO. 8-905 SHEET 1 OF 4 FILE NO. 72-132 B
	W.D. 72-132 FOR LEWIS HOMES F.B. 1027	DESIGNED BY: B.W. DRAWN BY: B.W. CHECKED BY: B.W.	REVISIONS 1. Added Note No. 10 B.W. 11/13/76 2. Water Dept. Approval ENW 11/16/76 3. Revised Tract Number B.W. 11/16/76	DATE: 12/28/72	DATE: 12/28/72

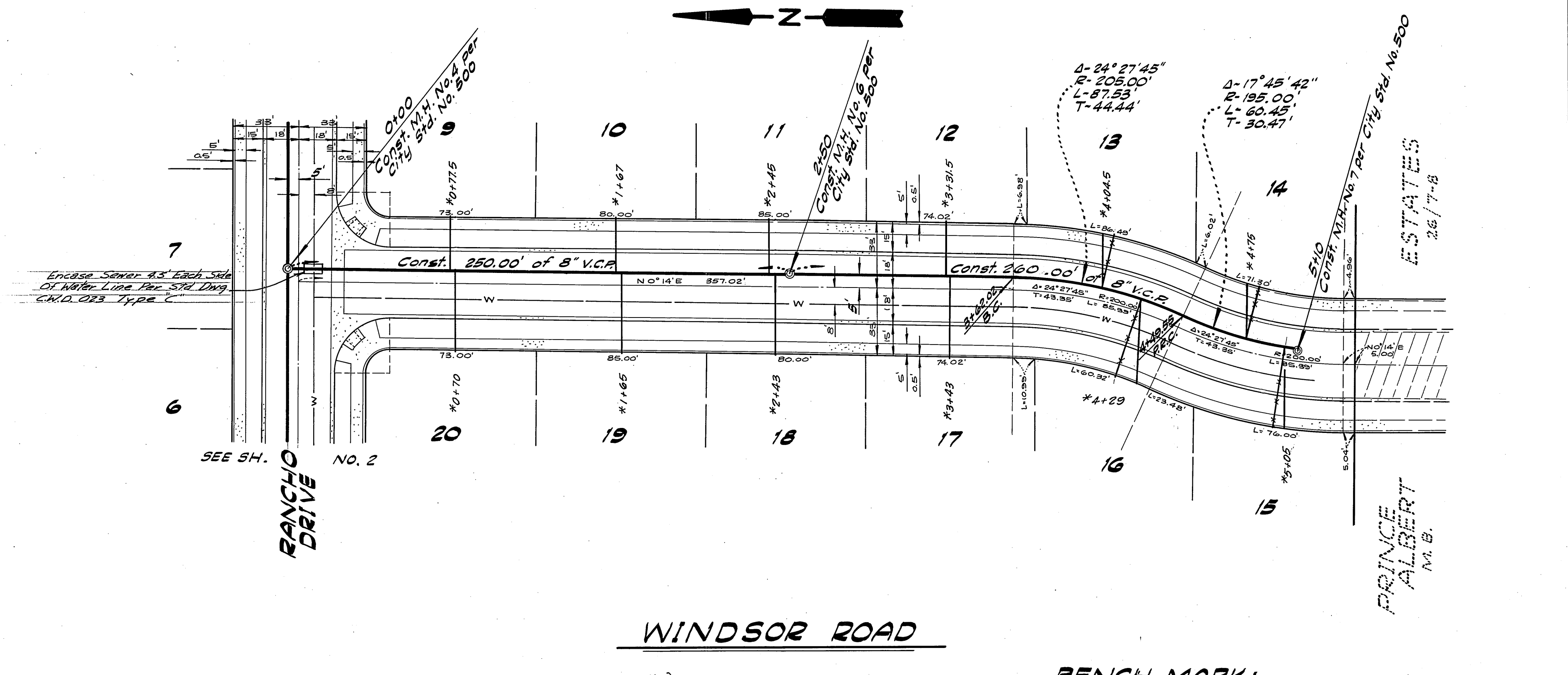
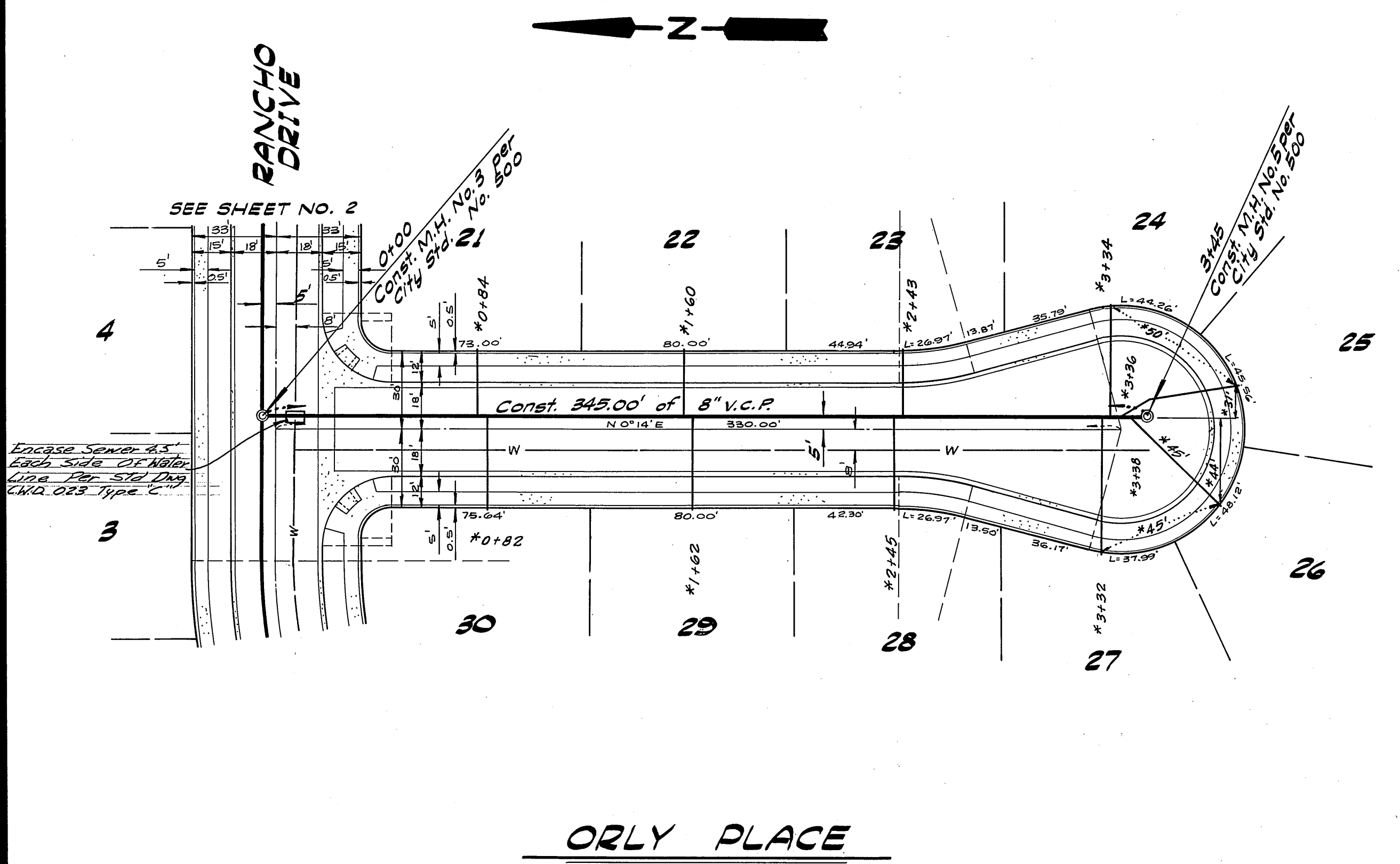
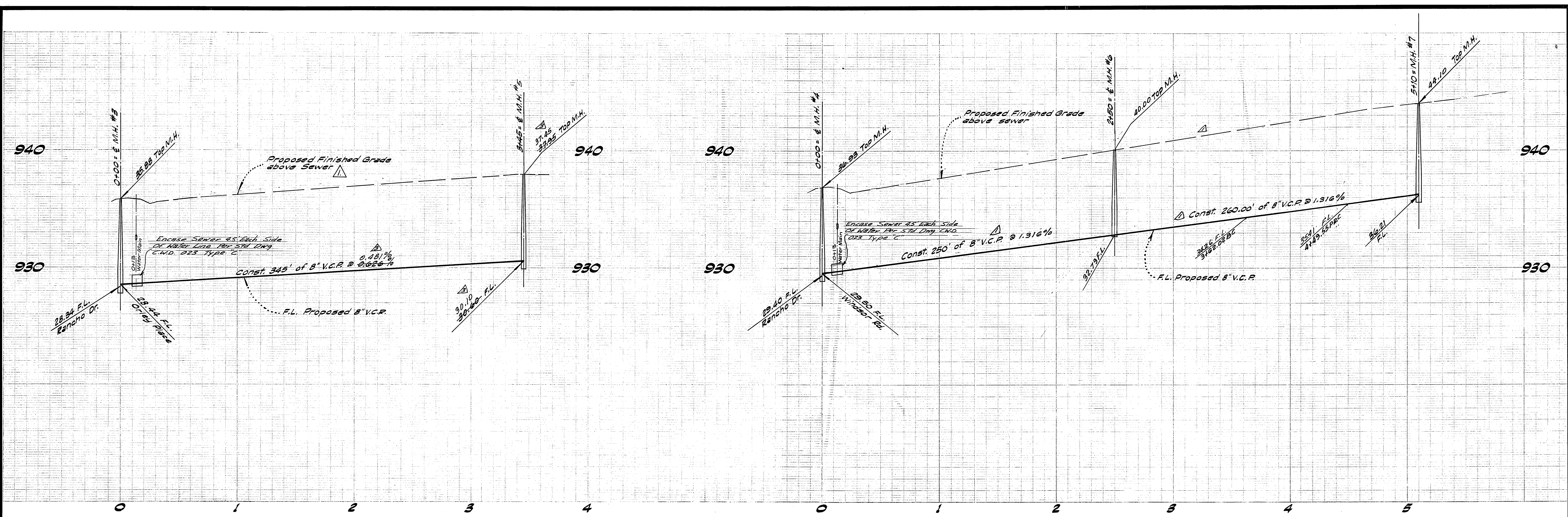


**RANCHO DRIVE**

Approved By  
*Valery Shellen*  
 Chief Utilities Engineer - Water  
 11-23-76  
 Date

**BENCH MARK:**  
 Top of Iron Pipe @ the centerline intersection  
 of RANCHO DR. and SEDGWICK AVE., City of  
 Riverside P.B. 55913. ELEV. = 934.32'  
 \*AS BUILT 6-77 MET

<b>ALBERT A. WEBB ASSOCIATES</b> CIVIL ENGINEERS RIVERSIDE, CALIFORNIA APPROVED BY: <i>Albert A. Webb</i> DATE: 10/12/76 R.E. No. 9876 W.O. 72-132 FOR: LEWIS HOMES F.B. 1027		<b>CITY OF RIVERSIDE, CALIFORNIA</b> PUBLIC WORKS DEPARTMENT APPROVED BY: <i>William D. Anderson</i> DATE: 11/23/76 PRINCIPAL ENGINEER PARK DEPARTMENT TRAFFIC DIVISION CHIEF PUB. WKS. ENGR.		<b>SEWER PLAN &amp; PROFILE</b> ACCOUNT No. DRAWING NUMBER <b>S-905</b> RANCHO DRIVE EXISTING C.O. TO EAST TR. BNDY. TRACT NO. 4494-7819 SHEET 2 OF 4 SCALE: HORIZ. 1"=40' ; VERT. 1"=4' 72-132 B	
DESIGNED BY: <i>B.W.</i> DRAWN BY: <i>B.W.</i> CHECKED BY: <i>R.E.C.</i>		DATE: 12/25/76		REVISIONS:	

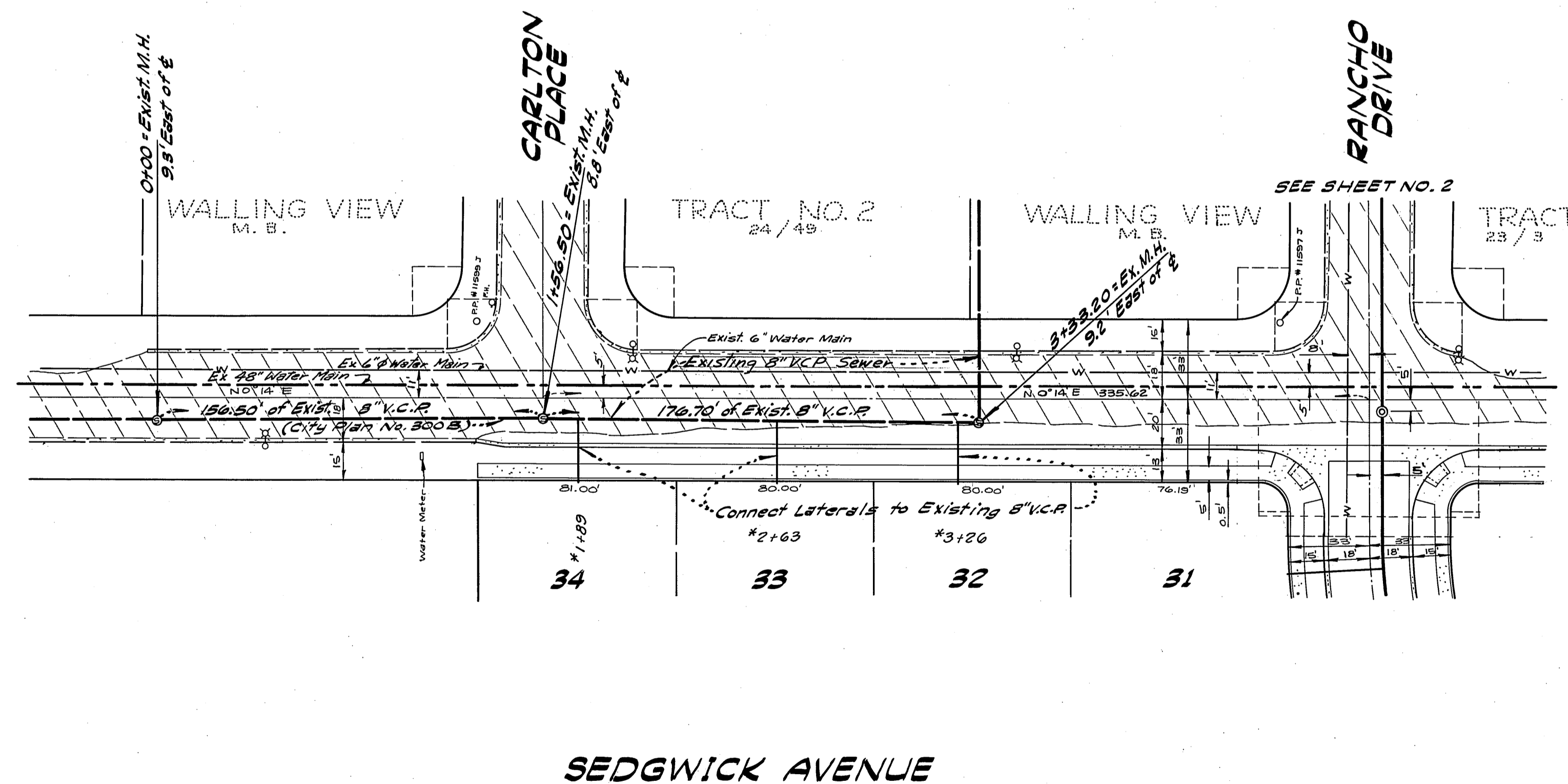
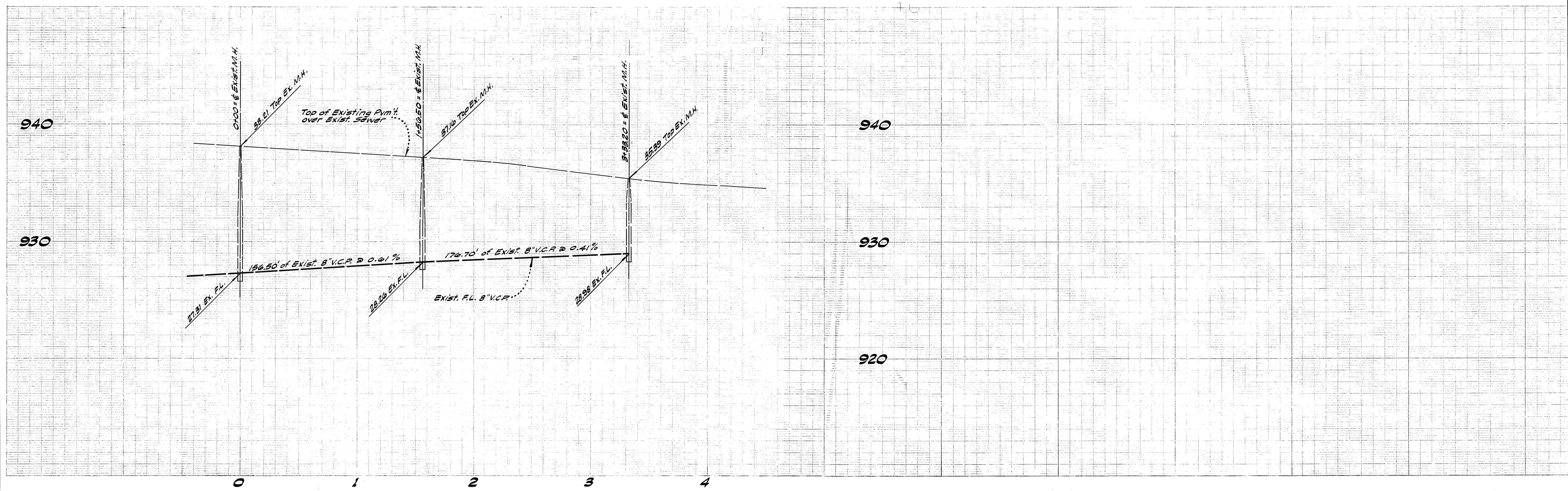


ORLY PLACE

WINDSOR ROAD

**BENCH MARK:**  
Top of Iron Pipe @ the centerline intersection  
of RANCHO DR and SEDAWICK AVE, City of  
Riverside F.B. 55913. ELEV. 934.32'

ALBERT A. WEBB ASSOCIATES CIVIL ENGINEERS RIVERSIDE, CALIFORNIA APPROVED BY: <i>[Signature]</i> DATE: 11/12/72 R.E. No. 9876	Approved By <i>[Signature]</i> Chief Utilities Engineer - Water 11-23-72	CITY OF RIVERSIDE, CALIFORNIA PUBLIC WORKS DEPARTMENT		SEWER PLAN & PROFILE ORLY PLACE RANCHO DRIVE TO CUL-DE-SAC WINDSOR ROAD RANCHO DRIVE TO SOUTH TR. BNDY. TRACT NO. 4444 7819	ACCOUNT NO. DRAWING NUMBER <b>J-905</b> SHEET 3 OF 4
	W.O. 72-132 FOR: LEWIS HOMES F.B. 1027 DESIGNED BY: B.W. DRAWN BY: B.W. CHECKED BY: E.E.C.	REVISIONS MARK DATE APPR. DATE 1. Revised Grade on Sewer Main ENW 11/15/72 2. Water Dept. Approval ENW 11/15/72 3. Revised Grade on Windsor Road ENW 11/15/72 4. Revised Tract Number 11/15/72	APPROVED BY PRINCIPAL ENGINEER PARK DEPARTMENT TRAFFIC DIVISION CHIEF PUB. WKS. ENGR.	APPROVED BY DIRECTOR OF PUBLIC WORKS DATE: 12/28/72	SCALE: Horiz. 1"=40' ; VERT. 1"=4' 72-132 B



Approved By  
*Wally Miller*  
 Chief Utilities Engineer - Water  
 Date 11-23-74

\* AS BUILT 6-77 KPT

**BENCH MARK:**  
 Top of Iron Pipe at the centerline intersection of RANCHO DR. and SEDGWICK AVE., City of Riverside F.B. 559/3. ELEV. 934.32'.

ALBERT A. WEBB ASSOCIATES CIVIL ENGINEERS RIVERSIDE, CALIFORNIA APPROVED BY: <i>Albert A. Webb</i> DATE 10/11/74 R.E. No. 9876 W.O. 72-132 FOR: LEWIS HOMES F.B. 1027	Approved By <i>Wally Miller</i> Chief Utilities Engineer - Water Date 11-23-74	CITY OF RIVERSIDE, CALIFORNIA PUBLIC WORKS DEPARTMENT	ACCOUNT No. DRAWING NUMBER <b>8-905</b>
	APPROVED BY: <i>Wally Miller</i> DATE 11/23/74 Water Dept. Approval ENJW Revised Tract Number ENJW MARK REVISIONS APPR. DATE DESIGNED BY: BW DRAWN BY: BW CHECKED BY: EEC	APPROVED BY: <i>William D. ...</i> DIRECTOR OF PUBLIC WORKS DATE 12/28/74	SEWER PLAN & PROFILE SEDGWICK AVENUE TRACT NO. <del>4494</del> 7819 SCALE: Horiz. 1"=40' ; Vert. 1"=4'