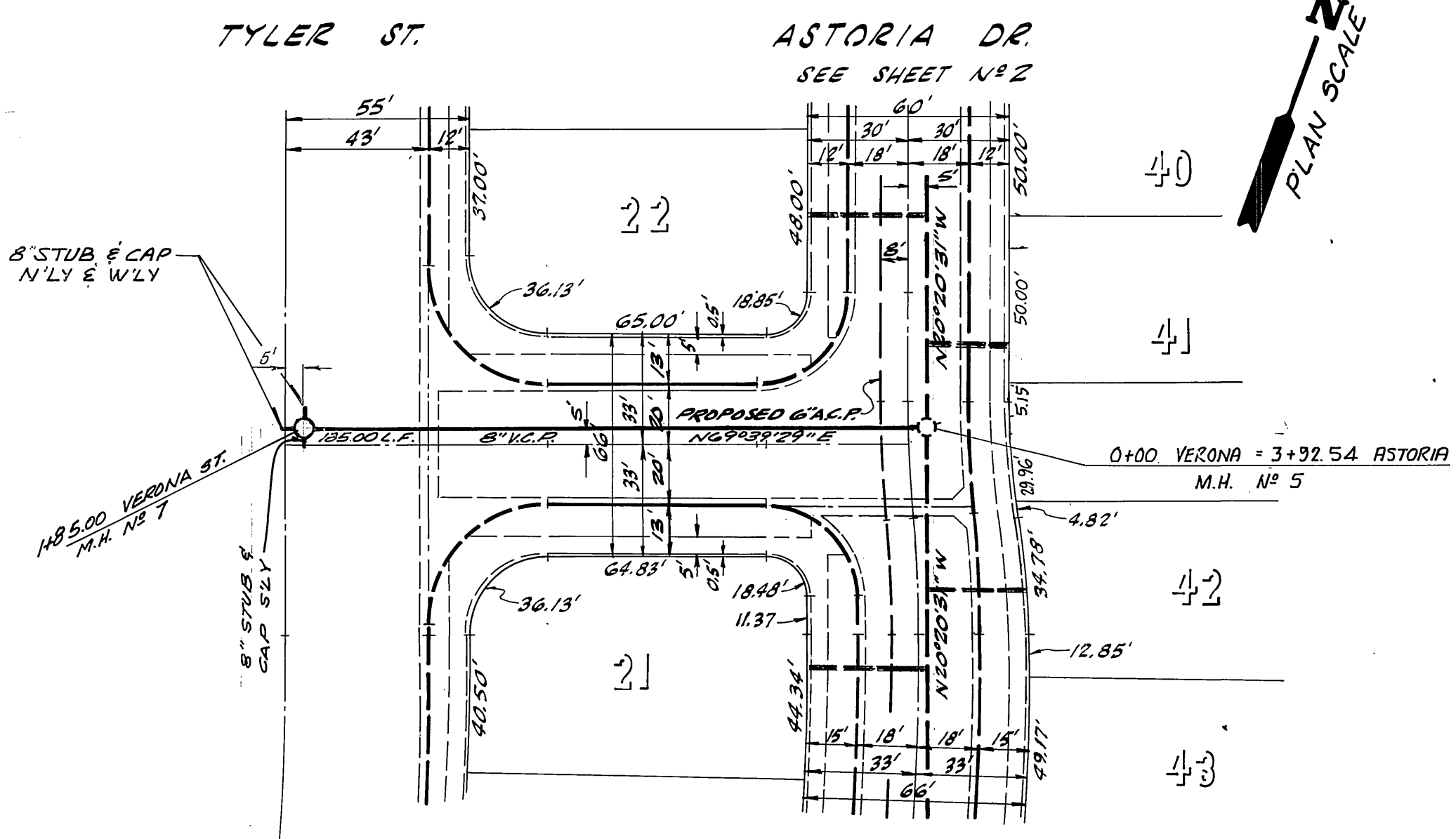


PROFILE SCALES  
 HORIZ: 1" = 40'  
 VERT: 1" = 4'



VERONA STREET

BENCH MARK:  
 PK NAIL IN EAST CURB  
 ON TYLER ON E GAYLORD  
 PRODUCED PER CITY OF  
 RIVERSIDE P.B. 700/1.  
 ELEV. 778.21

APPROVED BY  
*R. J. Taylor for H. CREASON* 12-21-72  
 CHIEF UTILITIES ENGINEER-WATER DATE

★ "AS BUILT" EAB. 873

**R. M. Galloway & Associates Inc.**  
 CIVIL ENGINEERS & PLANNERS  
 LAND AND MINERAL SURVEYORS/LANDSCAPE ARCHITECTS

NEWPORT BEACH/COSTA MESA • SAN FRANCISCO • LOS ANGELES • SAN DIEGO • ALTURA, CALIF. • PRESCOTT, ARIZONA  
 CALIFORNIA BUILDING 121 CABRILLO, COSTA MESA, CALIF. P.O. BOX 1995 92626  
 (714) 666-8888 NEWPORT BEACH, CALIF. 92665

APPROVED BY:  
*John K. Mandrell* 2-24-71  
 JOHN K. MANDRELL R.C.E. 13703 DATE

ESTIMATE OF QUANTITIES	
ITEM	QUANTITY
SEWER	
8" V.C.P. SEWER MAIN	1,659 L.F.
4" V.C.P. SEWER LATERAL	1,850 L.F.
MANHOLE PER STD. 500	7 EA.
CLEANOUT PER STD. 560	2 EA.

NOTE: THE CITY OF RIVERSIDE DOES NOT CHECK THE QUANTITIES SHOWN HEREON AND IS NOT RESPONSIBLE FOR THEIR ACCURACY.

PRIVATE ENGINEERS NOTES TO CONTRACTOR

- The existence and location of any underground utility pipes or structures shown on these plans are obtained by a search of the available records. Approval of these plans by the CITY OF RIVERSIDE does not constitute a representation as to the accuracy or completeness of the location or existence of any underground utility pipes or structures within the limits of this project. The contractor is required to take all due precautionary means to protect the utility not of record or not shown on these plans.
- All existing water, sewer & storm drain locations and flowline elevations which will be joined as part of this project will be verified by the contractor prior to any construction. The contractor will advise the engineer (Phone (714) 642-9840) of any deviations from information shown on the plans and obtain engineer's authorization to proceed with construction.

- GENERAL NOTES**
- CONSTRUCTION SHALL BE IN ACCORDANCE WITH THE STANDARD SPECIFICATIONS FOR PUBLIC WORKS CONSTRUCTION, 1970 ED. AND CITY OF RIVERSIDE STD. DWGS.
  - IT SHALL BE THE RESPONSIBILITY OF THE CONTRACTOR TO CLEAR THE RIGHT-OF-WAY IN ACCORDANCE WITH THE PROVISIONS OF LAW AS IT EFFECTS EACH UTILITY, INCLUDING IRRIGATION LINES AND APPURTENANCES, AND AT NO COST TO THE CITY.
  - LOCATION OF TEES AND LATERALS TO BE DETERMINED BY OWNER AT TIME OF CONSTRUCTION.
  - ALL STUBS AND LATERALS TO BE CONSTRUCTED IN ACCORDANCE WITH STANDARD DRAWING N° 502. STUBS SHALL BE PLUGGED AND CAPPED AND SHALL BE 2' LONG.
  - MANHOLE FRAMES AND COVERS TO BE SET AT FINISHED STREET GRADE.
  - LATERALS TO BE 4" AND EXTENDED TO PROPERTY LINE.
  - PRIOR TO CONSTRUCTION OF SEWER, CONTRACTOR IS TO EXPOSE EXISTING SEWER AND CONTACT THE ENGINEER FOR VERIFICATION OF EXISTING ELEVATIONS.
  - PIPE SHALL BE BEDDED PER CASE II, STANDARD DWG. N° 452, UNLESS OTHERWISE SPECIFIED ON PLANS.

PRIVATE ENGINEER'S NOTICE TO CONTRACTOR

THE EXISTENCE AND LOCATION OF ANY UNDERGROUND UTILITY PIPES OR STRUCTURES SHOWN ON THESE PLANS WERE OBTAINED BY A SEARCH OF THE AVAILABLE RECORDS. APPROVAL OF THESE PLANS BY THE CITY OF RIVERSIDE DOES NOT CONSTITUTE A REPRESENTATION AS TO THE ACCURACY OR COMPLETENESS OF THE LOCATION, OR THE EXISTENCE OR NON-EXISTENCE OF ANY UTILITY PIPE OR STRUCTURE WITHIN THE LIMITS OF THIS PROJECT. THE CONTRACTOR IS REQUIRED TO TAKE ALL DUE PRECAUTIONARY MEANS TO PROTECT THE UTILITY LINES NOT OF RECORD OR NOT SHOWN ON THESE PLANS.

CITY OF RIVERSIDE, CALIFORNIA  
 DEPARTMENT OF PUBLIC WORKS

APPROVED BY  
 OFFICE ENGINEER  
 PARK DEPARTMENT  
 TRAFFIC DIVISION  
 ASSISTANT CITY ENG.

BY  
 DATE

APPROVED BY  
*William D. Anderson*  
 DIRECTOR OF PUBLIC WORKS

DATE 12/28/72

INDEXED R.R.  
 PROJECT NO. 5-907

SEWER PLAN & PROFILE

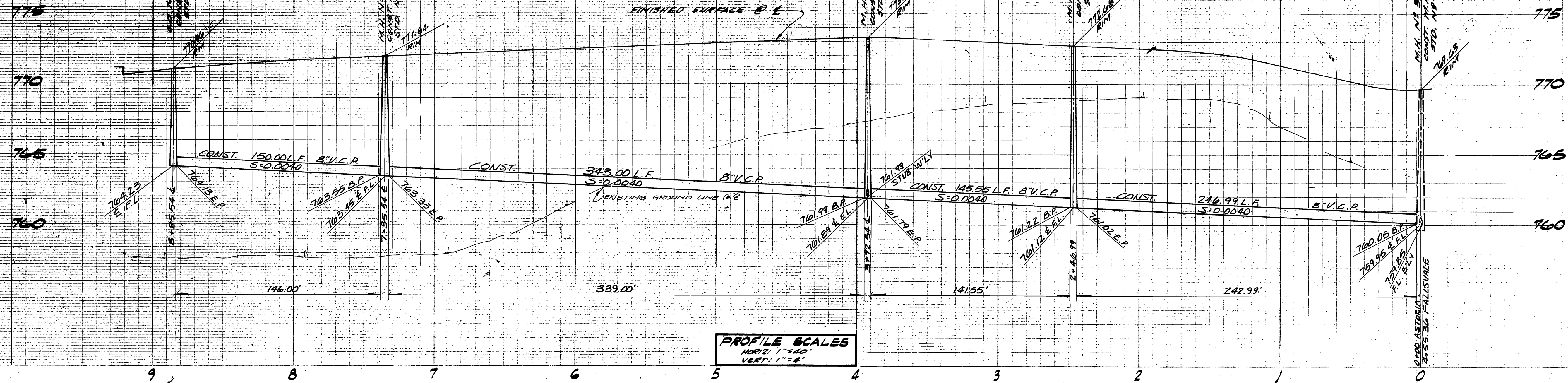
VERONA STREET  
 TRACT NO. 4234

SHEET 1 OF 3

HORIZ. SCALE: 1" = 40' VERT. SCALE: 1" = 4'

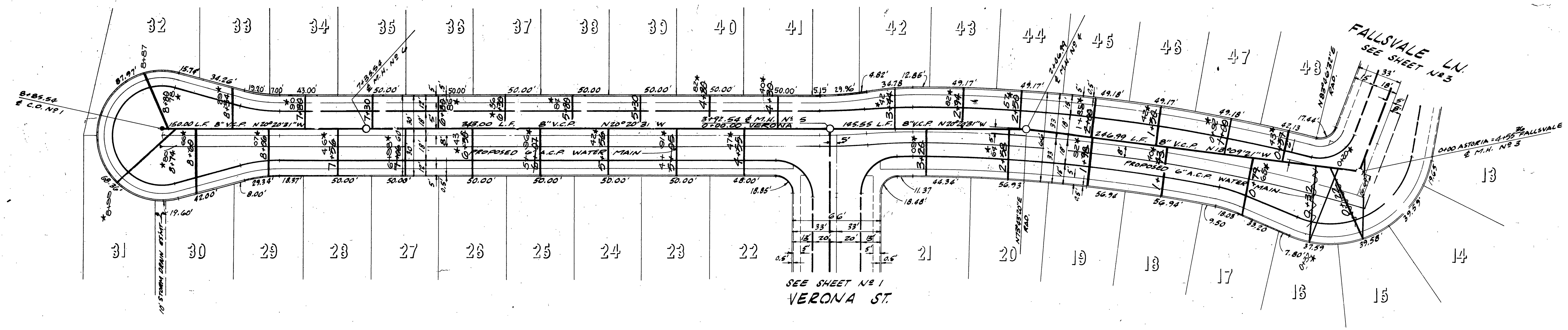
FILE NO.

DESIGNED BY IRT DRAWN BY IRT CHECKED BY E.J.W.



PROFILE SCALES  
 HORIZ. 1" = 40'  
 VERT. 1" = 4'

PLAN SCALE 1" = 40'



ASTORIA DRIVE

\*"AS BUILT" R.A.B. 8-78

BENCH MARK:  
 PK NAIL IN EAST CURB  
 ON TYLER ON E GAYLORD  
 PRODUCED PER CITY OF  
 RIVERSIDE FB. 706/1.  
 ELEV. 778.21

APPROVED BY  
*John K. Mandrell*  
 JOHN K. MANDRELL R.C.E. 13703  
 DATE 2/24/72

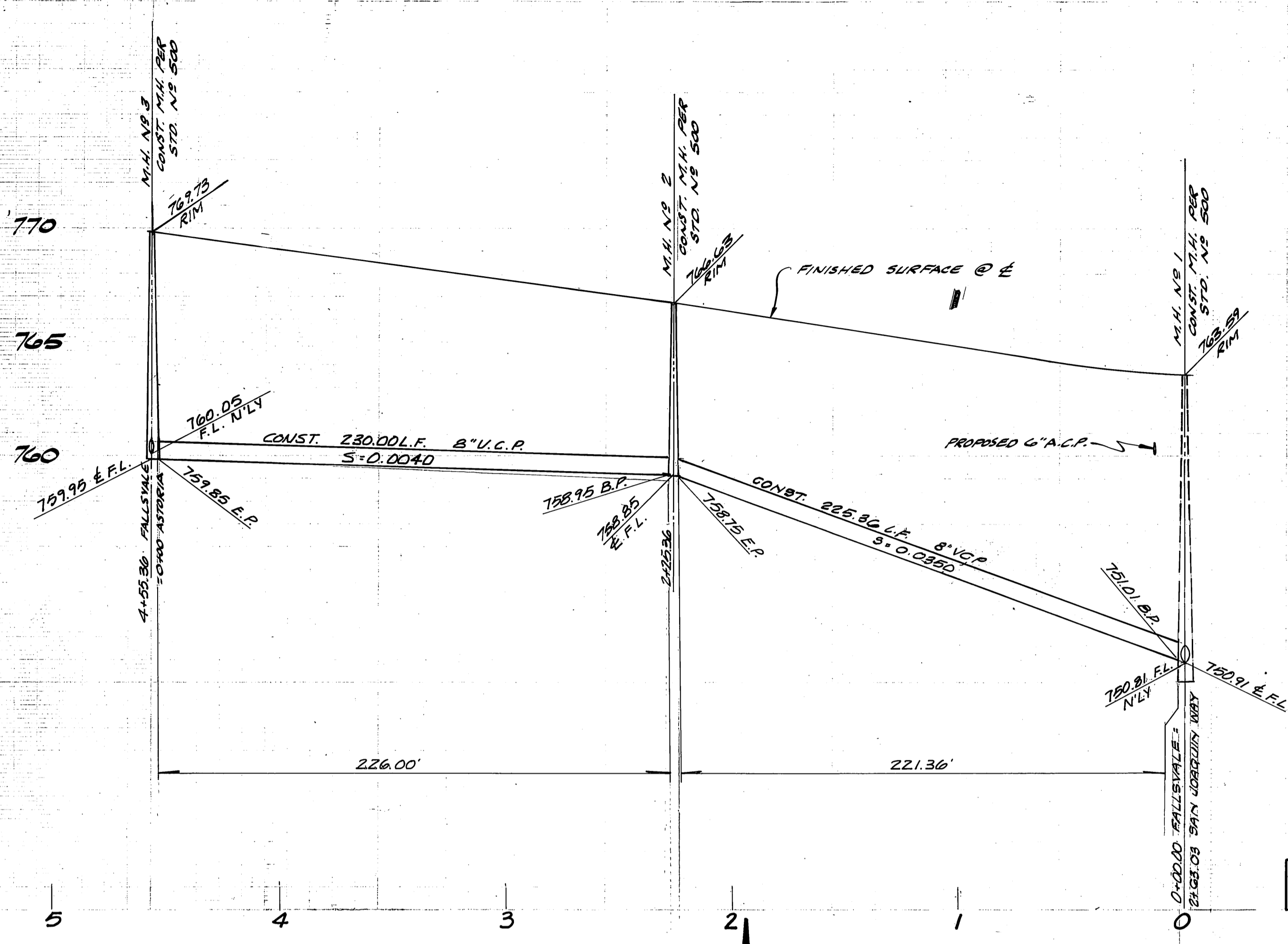
**R. M. Galloway & Associates Inc.**  
 CIVIL ENGINEERS & PLANNERS  
 LAND AND MINERAL SURVEYORS/LANDSCAPE ARCHITECTS  
 11000 BAYVIEW BLVD., COSTA MESA, CALIF. 92626  
 17000 BAYVIEW BLVD., COSTA MESA, CALIF. 92626  
 17000 BAYVIEW BLVD., COSTA MESA, CALIF. 92626  
 17000 BAYVIEW BLVD., COSTA MESA, CALIF. 92626

MARK	REVISIONS	APPR.	DATE

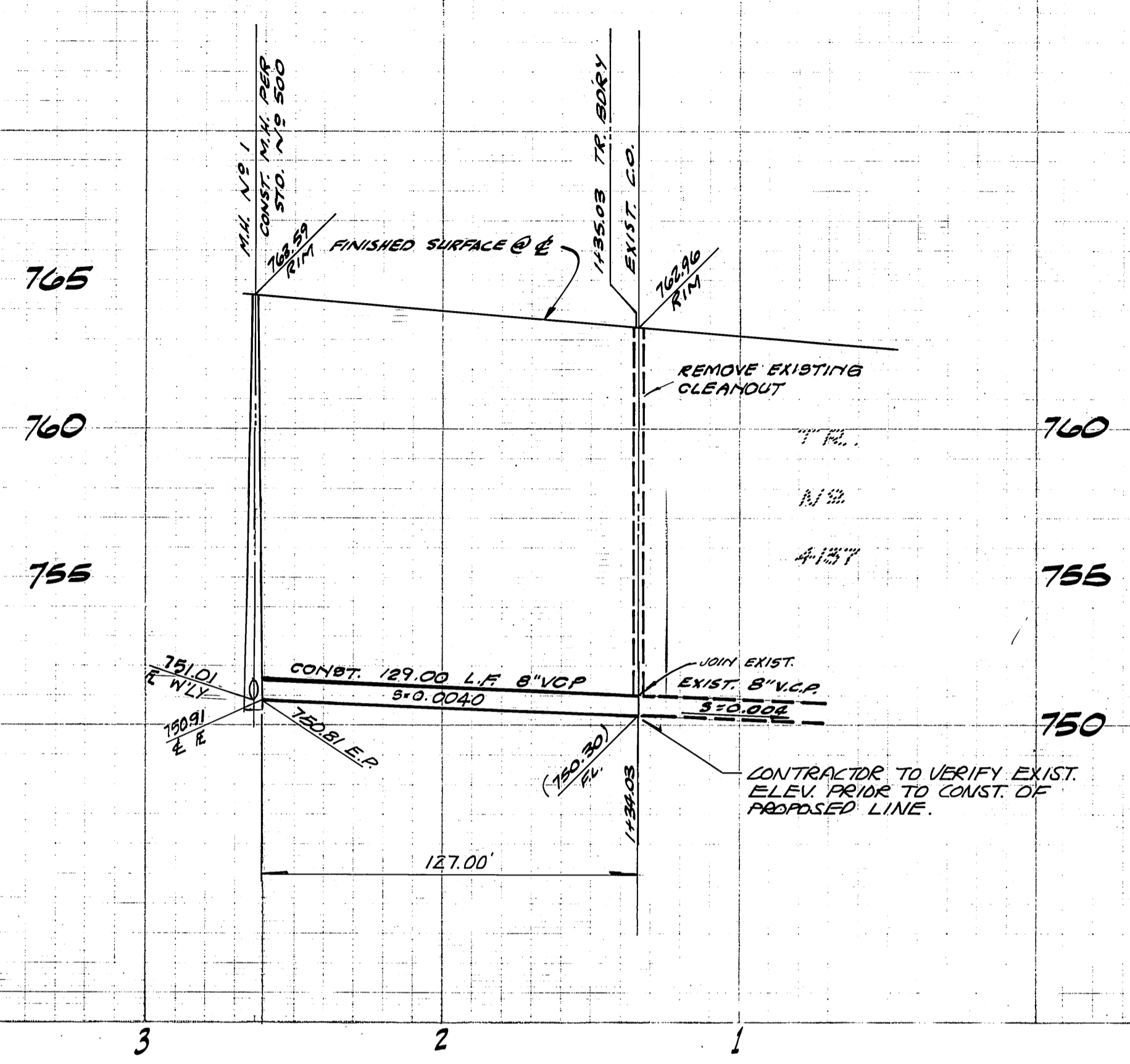
CITY OF RIVERSIDE, CALIFORNIA  
 DEPARTMENT OF PUBLIC WORKS

APPROVED BY  
*William D. Hansen*  
 DIRECTOR OF PUBLIC WORKS  
 DATE 2/28/72

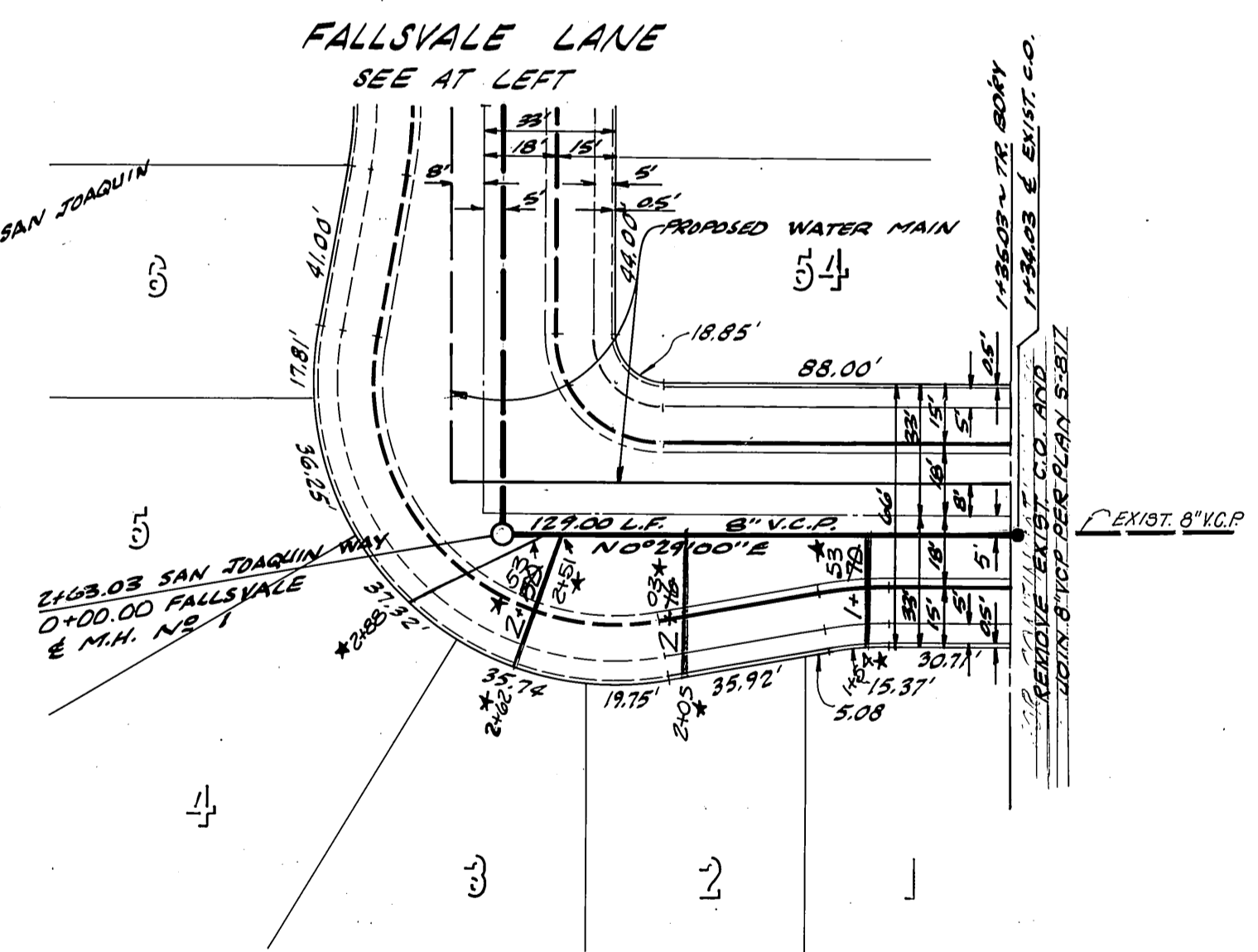
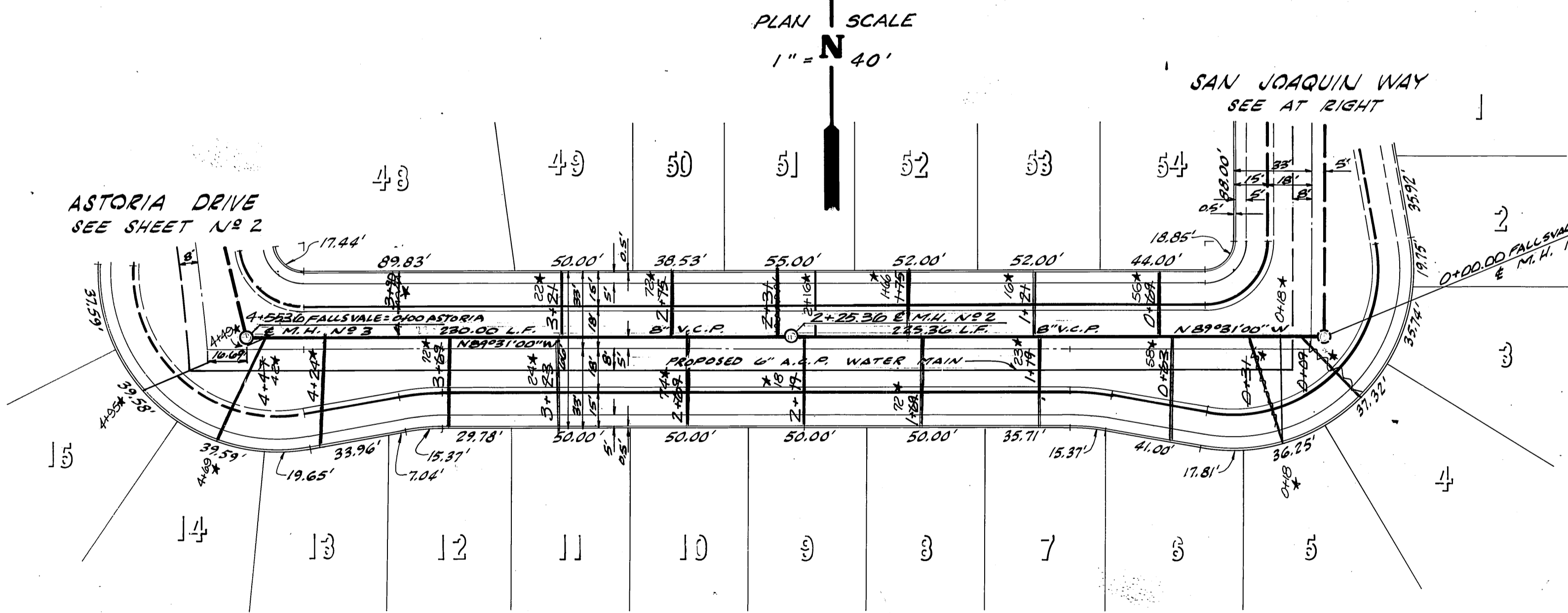
SEWER PLAN & PROFILE	PROJECT NO. <b>5-907</b>
ASTORIA DRIVE TRACT NO. 4234	SHEET <b>2</b> OF <b>3</b>
HORIZ. SCALE: 1" = 40' VERT. SCALE: 1" = 4'	FILE NO.



PROFILE SCALES  
HORIZ: 1" = 40'  
VERT: 1" = 4'



PLAN SCALE: 1" = 40'



FALLSVALE LANE

SAN JOAQUIN WAY

\*AS BUILT\* R.A.B. 8-78

BENCH MARK:  
PK NAIL IN EAST CURB  
ON TYLER ON E GAYLORD  
PRODUCED PER CITY OF  
RIVERSIDE FB. 706/1.  
ELEV. 778.21

APPROVED BY  
*R. K. Taylor for H. CREASON* 12-21-72  
CHIEF UTILITIES ENGINEER-WATER DATE

**R. M. Galloway & Associates Inc.**  
CIVIL ENGINEERS & PLANNERS  
LAND AND MINERAL SURVEYORS/LANDSCAPE ARCHITECTS  
NEWPORT BEACH, COSTA MESA, SAN FRANCISCO, LOS ANGELES, SAN DIEGO, VALTIERA, CALIF. \*PRESCOTT, ARIZONA  
GALBAR BUILDING  
170 CARRILLO, COSTA MESA, CALIF. P.O. BOX 1999  
COSTA MESA, CALIF. 92626  
APPROVED BY:  
*John K. Mandrell* 2-24-71  
JOHN K. MANDRELL R.C.E. 13703 DATE

MARK	REVISIONS	APPR.	DATE

CITY OF RIVERSIDE, CALIFORNIA  
DEPARTMENT OF PUBLIC WORKS  
APPROVED BY  
OFFICE ENGINEER  
BY: \_\_\_\_\_ DATE: \_\_\_\_\_  
TRAFFIC DIVISION  
ASSISTANT CITY ENG.

SEWER PLAN & PROFILE  
FALLSVALE LANE &  
SAN JOAQUIN WAY  
TRACT NO. 4234  
HORIZ. SCALE: 1" = 40'  
VERT. SCALE: 1" = 4'

PROJECT NO.  
5-907  
SHEET 3 OF 3  
FILE NO.

APPROVED BY  
*William D. Hansen*  
DIRECTOR OF PUBLIC WORKS  
DATE 12-28-72