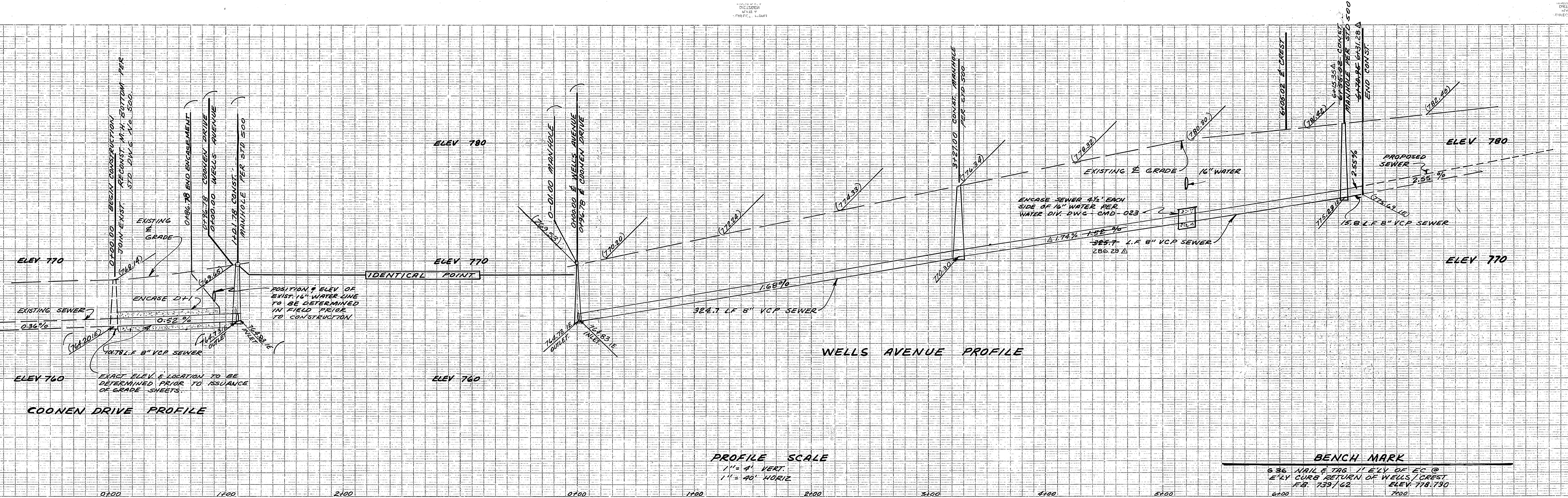


NOT TO SCALE  
 INCLUDE  
 SEE V  
 PREP. L. 07

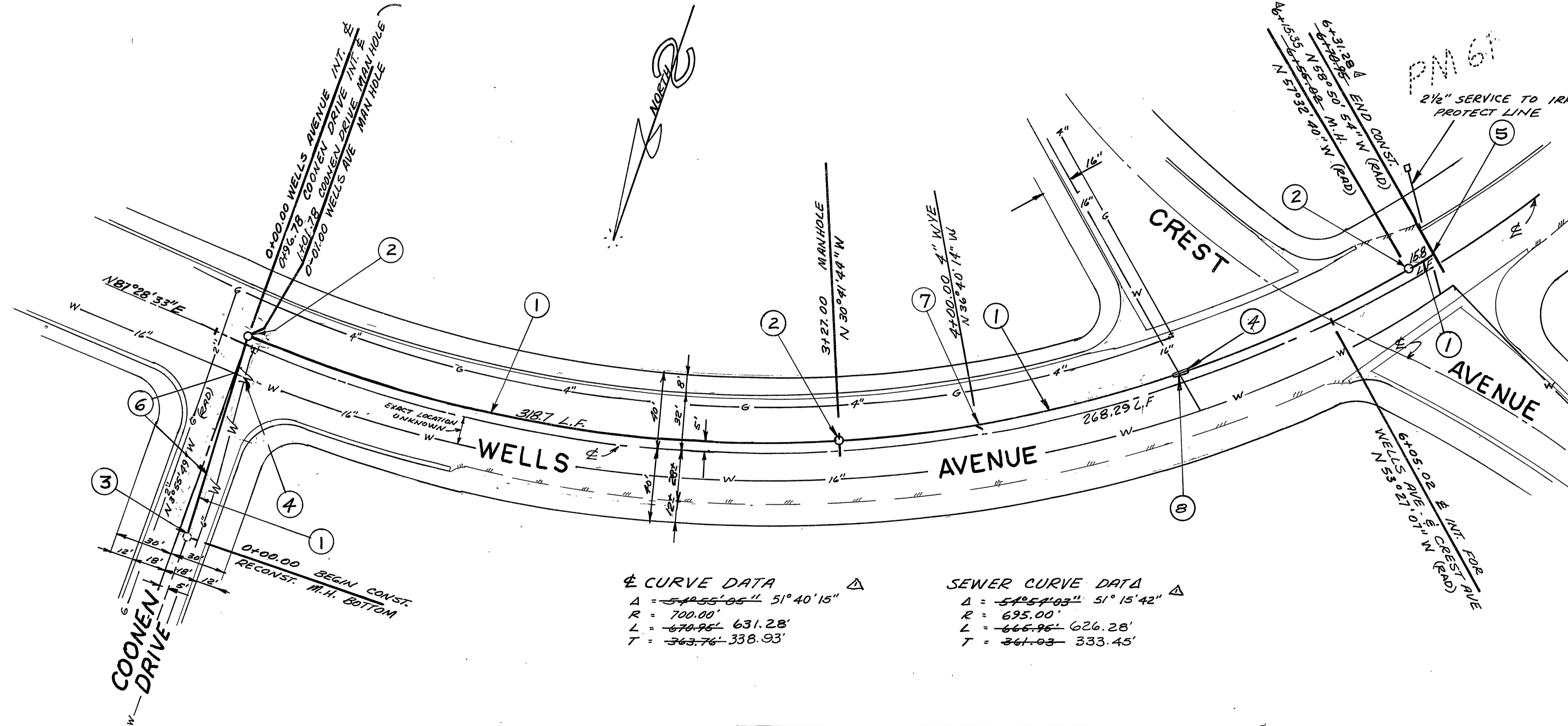
NOT TO SCALE  
 INCLUDE  
 SEE V  
 PREP. L. 07



PROFILE SCALE  
 1" = 4' VERT.  
 1" = 40' HORIZ.

BENCH MARK  
 6.36 NAIL & TAG 1' E'LY OF EC @  
 E'LY CURB RETURN OF WELLS / CREST  
 FB: 159762 ELEV: 778.730

- CONSTRUCTION NOTES**
1. INSTALL 8" V.C.P. SANITARY SEWER CASE I BEDDING PER STD DWG 452 UNLESS OTHERWISE SPECIFIED
  2. CONST. MANHOLE PER CITY STANDARD DWG. 500
  3. JOIN EXISTING SEWER WITHIN EXISTING STRUCTURE AND RECONSTR. M.H. BOTTOM PER CITY STD. DWG. N/S 500
  4. POT HOLE & VERIFY TRUE LOCATION OF WATER LINE BEFORE CONST.
  5. JOIN PROPOSED SEWER OR PLUG IN SEWER IS NOT CONSTRUCTED.
  6. ENCASE PER STD. DWG. 452 CASE III
  7. CONST. 4" WYE BRANCH PER STD. DWG. 562 FOR FUTURE LATERAL
  8. ENCASE 4 1/2' EACH SIDE OF WATER LINE PER WATER DIV. DWG. CMD-023



CURVE DATA		SEWER CURVE DATA	
Δ	51° 40' 15"	Δ	51° 15' 42"
R	700.00'	R	695.00'
L	670.94' 631.28'	L	665.96' 626.28'
T	343.76' 338.93'	T	341.03' 333.45'

**SALKIN ENGINEERING CORPORATION**  
 1045 W COLLINS AVE  
 ORANGE CALIFORNIA  
 714 633 7261

*Samuel Salkin*  
 SAMUEL SALKIN RCE 13420  
 18 Dec 1972  
 DATE

APPROVED: <i>Samuel Salkin</i> 1-16-73 WATER DIVISION	CITY OF RIVERSIDE, CALIFORNIA DEPARTMENT OF PUBLIC WORKS APPROVED BY: <i>[Signature]</i> DATE: 1/12/73 OFFICE ENGINEER PARK DEPARTMENT TRAFFIC DIVISION ASST. CITY ENG.	<b>WELLS AVENUE SEWER EXTENSION</b> FROM COONEN DRIVE TO CREST AVENUE FOR PM 61 PROJECT NO. 5-913 SHEET 2 OF 2 HORIZ SCALE 1" = 40' VERT SCALE 1" = 4' FILE NO.
---	---	---