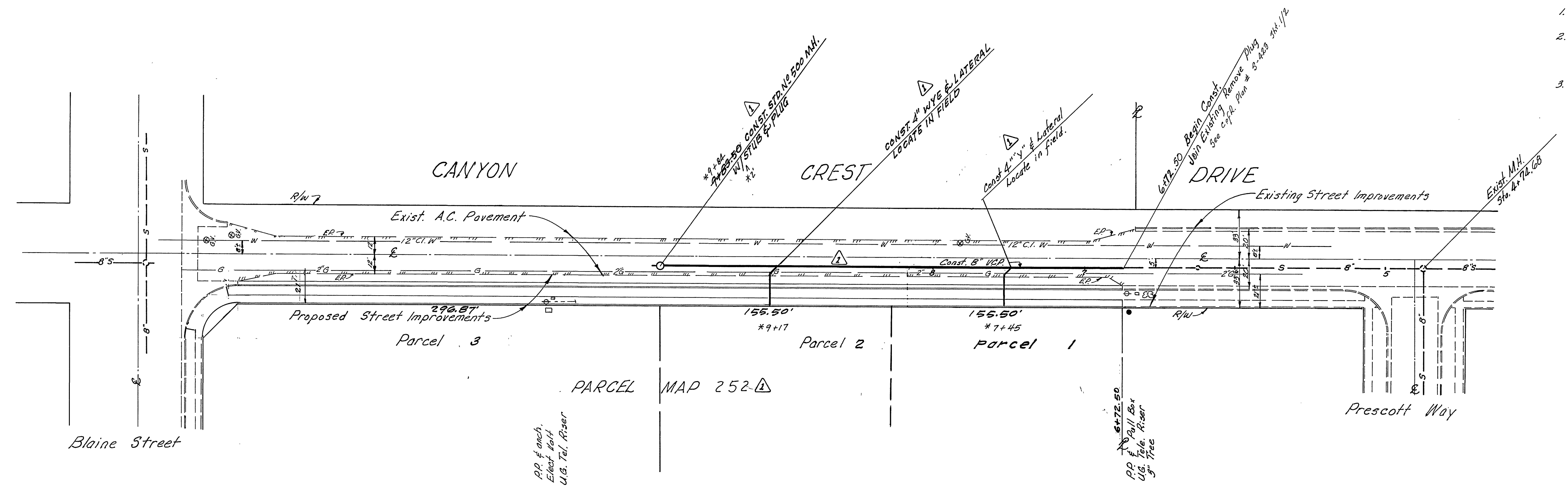


- GENERAL NOTES:**
1. Construction shall be in accordance with standard Specifications for Public Works Construction, 1970 Ed.
 2. The following Standard Drawings Apply - No 500 for Manholes, No 452 for Pipe Bedding, No 453 for Resurfacing & No 562 for installing T's.
 3. Exact location of T's will be determined during construction.



BENCH MARK
 CHIS. 10" B.C.R., S.E. CURB RETURN, CANYON CREST DR. &
 BLAINE ST. PER CIP BLAINE ST. S.M. SHEET # F.B. 609/10
 ELEV. 1037.63
 INDEXED T.R.

HAWKINS, ROBERTSON & ASSOC. ENGINEERS & SURVEYORS RIVERSIDE, CALIFORNIA <i>Charles E. Robertson</i> 12-5-72 R.C.E. 15016 DATE	ADD 159 LF 18" VCP & RELOCATE M.H. REV. COLAT TO 2" COLATS. (REV. FOR P.M. 252) 12/10/72	CITY OF RIVERSIDE, CALIFORNIA DEPARTMENT OF PUBLIC WORKS	SEWER PLAN & PROFILE CANYON CREST DRIVE From 197.8' S'y of Prescott Way to 347.8' S'y of Prescott Way Parcel Map 40-252(L)	PROJECT NO. 5-914
	DESIGNED BY: S.S. DRAWN BY: S.S. CHECKED BY: J.L.	APPROVED BY: [Signature] OFFICE ENGINEER PARK DEPARTMENT TRAFFIC DIVISION ASSISTANT CITY ENG.	APPROVED BY: [Signature] DIRECTOR OF PUBLIC WORKS	SHEET 1 OF 1 FILE NO. 72-2268