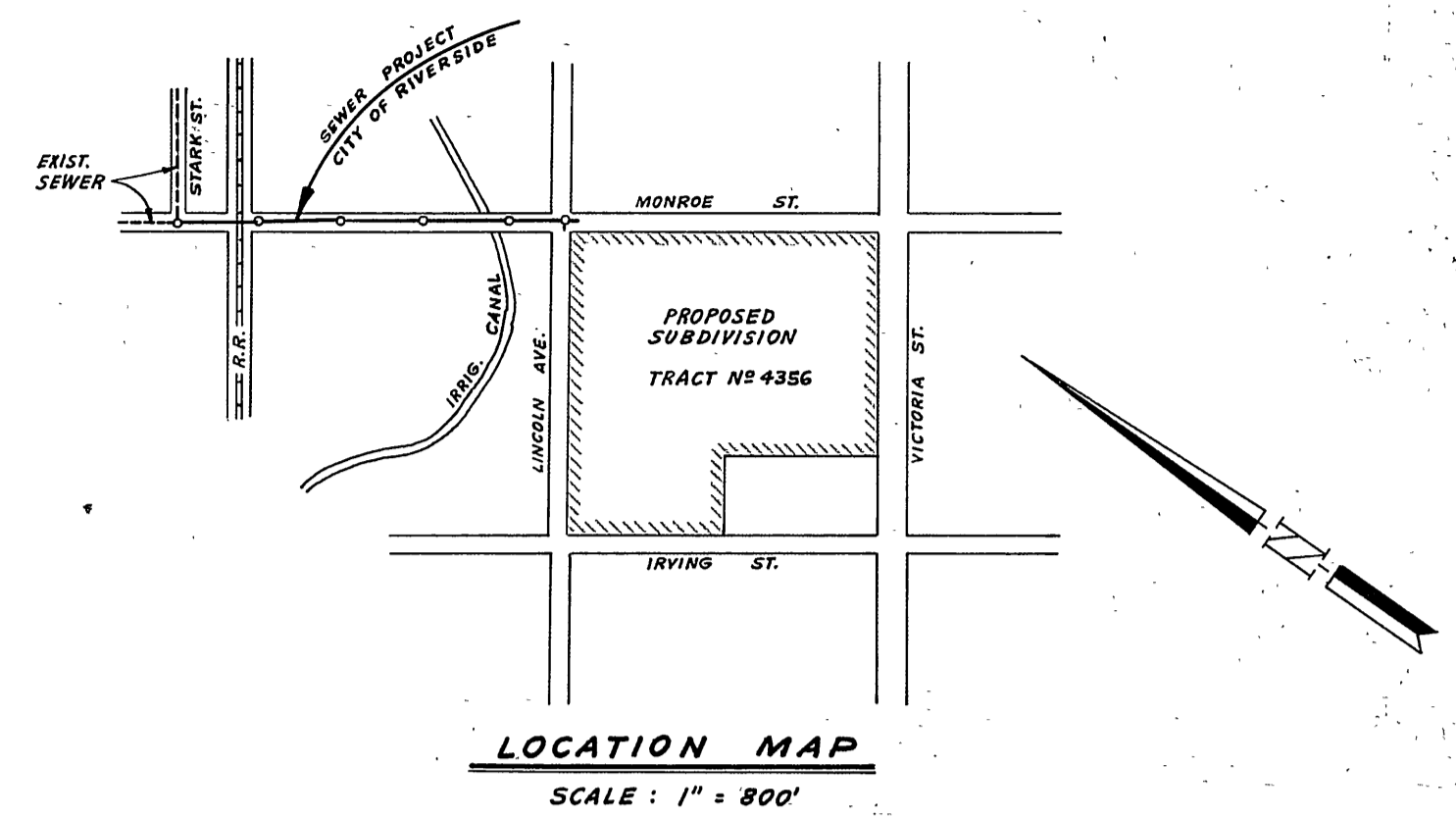
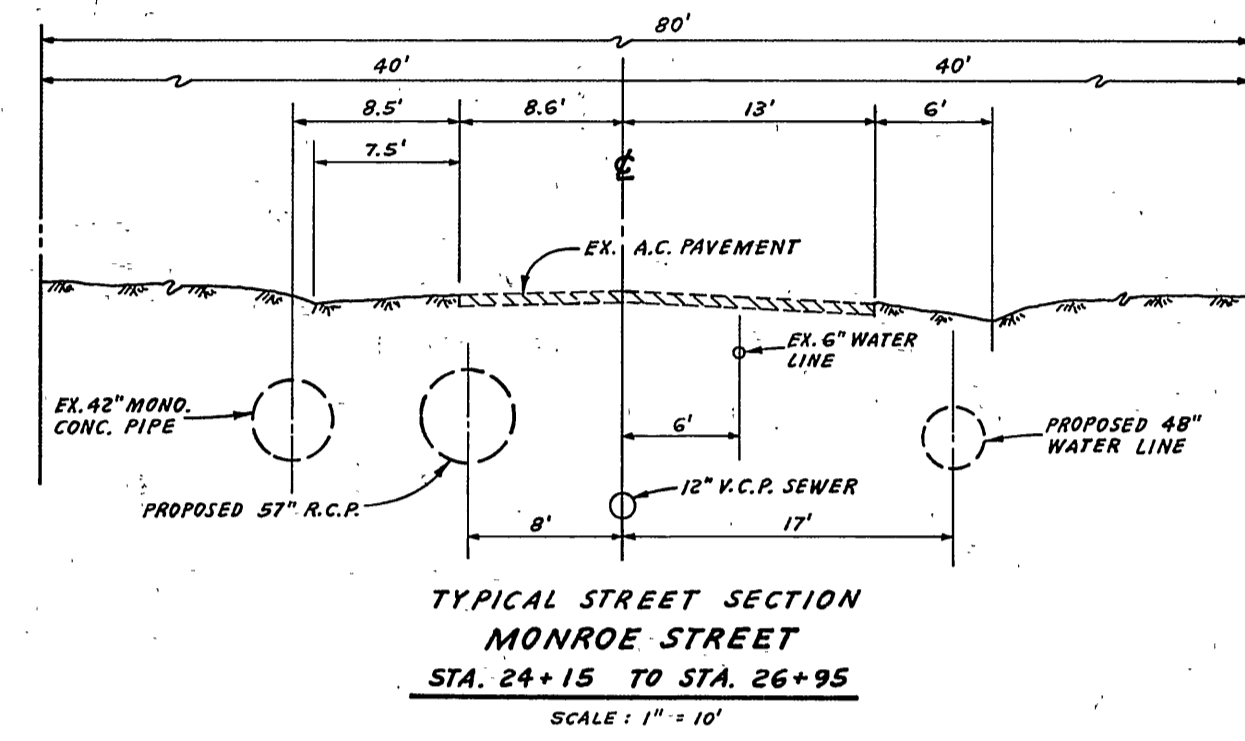
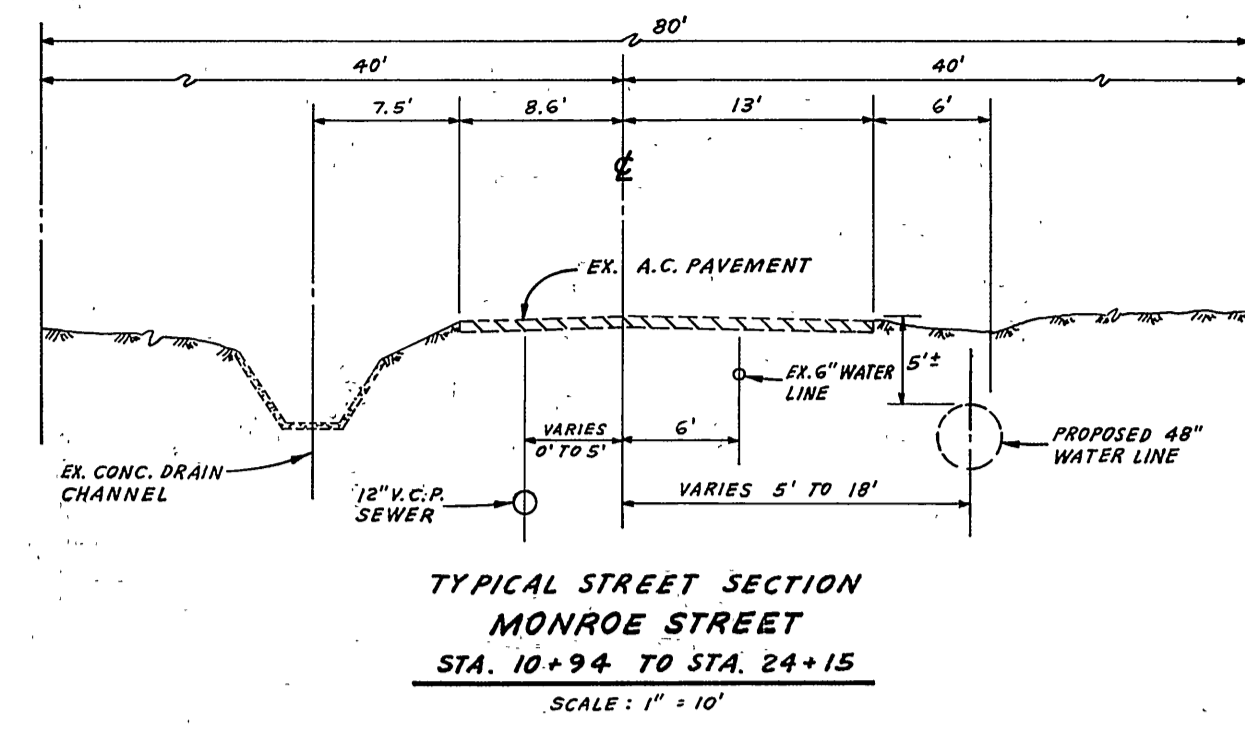
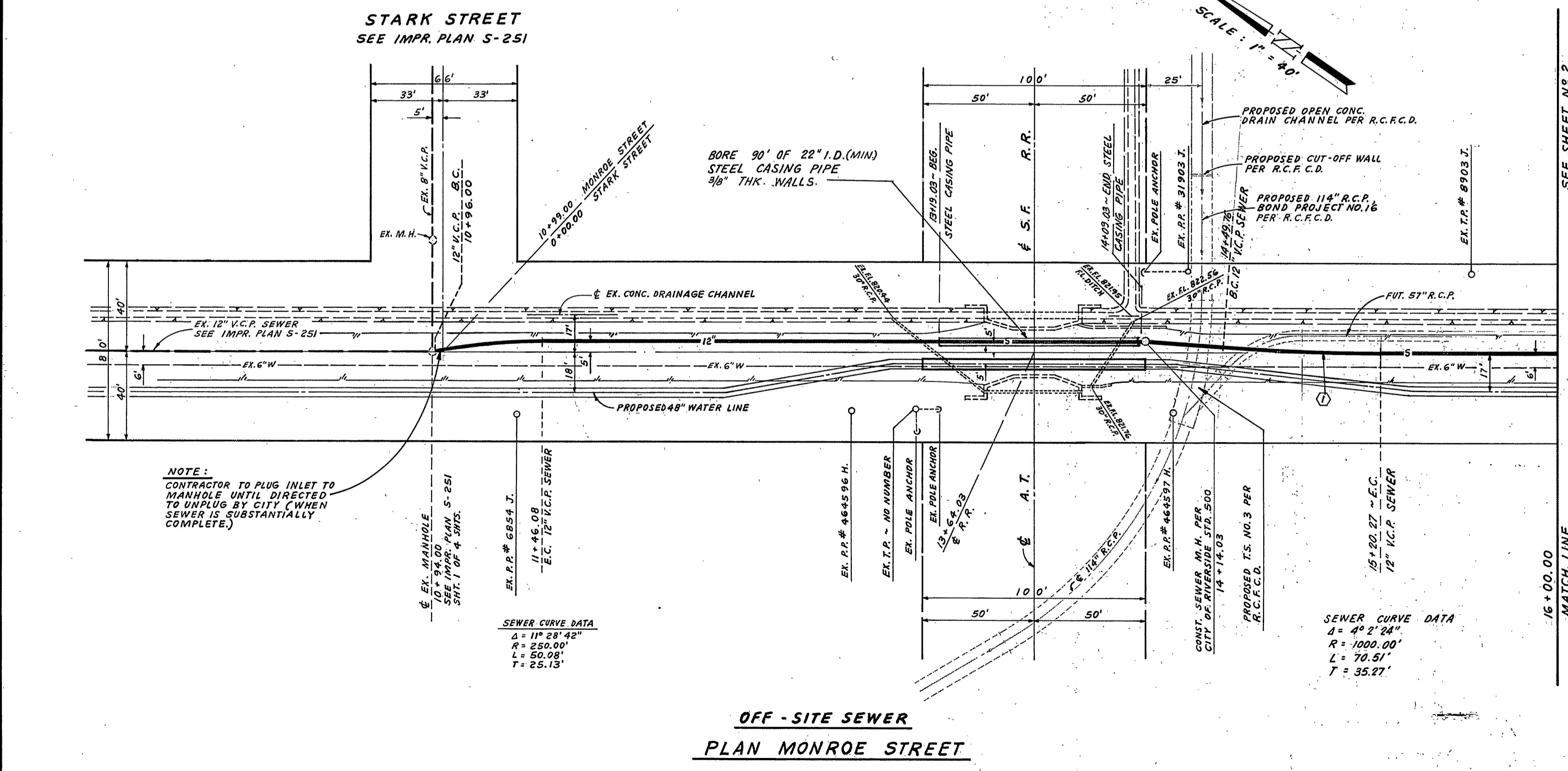


**NOTE:**  
 FOR STORM DRAIN DESIGN (57\"/>



**GENERAL NOTES**

- CONSTRUCTION SHALL BE IN ACCORDANCE WITH THE STANDARD SPECIFICATIONS FOR PUBLIC WORKS CONSTRUCTION 1970 EDITION AND CITY OF RIVERSIDE STD. DWG'S.
- IT SHALL BE THE RESPONSIBILITY OF THE CONTRACTOR TO CLEAR THE RIGHT OF WAY IN ACCORDANCE WITH THE PROVISIONS OF THE LAW AS IT AFFECTS EACH UTILITY INCLUDING IRRIGATION LINES AND APPURTENANCES.
- PIPE SHALL BE BEDDED PER CASE I, STANDARD DRAWING NO. 452, UNLESS OTHERWISE SPECIFIED ON PLAN.
- MANHOLE FRAMES AND COVERS TO BE SET TO PROPOSED OR EXISTING PAVEMENT GRADES.



**NOTE:**  
 CONTRACTOR TO PLUG INLET TO MANHOLE UNTIL DIRECTED TO UNPLUG BY CITY (WHEN SEWER IS SUBSTANTIALLY COMPLETE.)

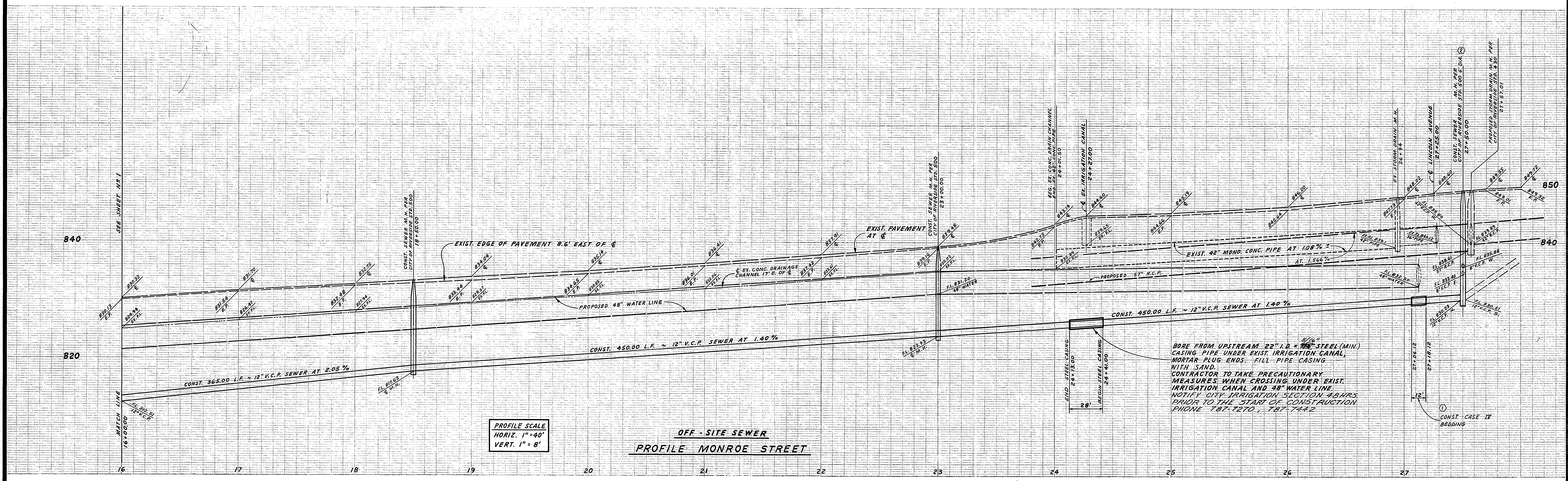
**SEWER CURVE DATA**  
 $\Delta = 11^{\circ} 28' 42''$   
 $R = 230.00'$   
 $L = 50.08'$   
 $T = 25.13'$

**SEWER CURVE DATA**  
 $\Delta = 42^{\circ} 24'$   
 $R = 1000.00'$   
 $L = 70.51'$   
 $T = 35.27'$

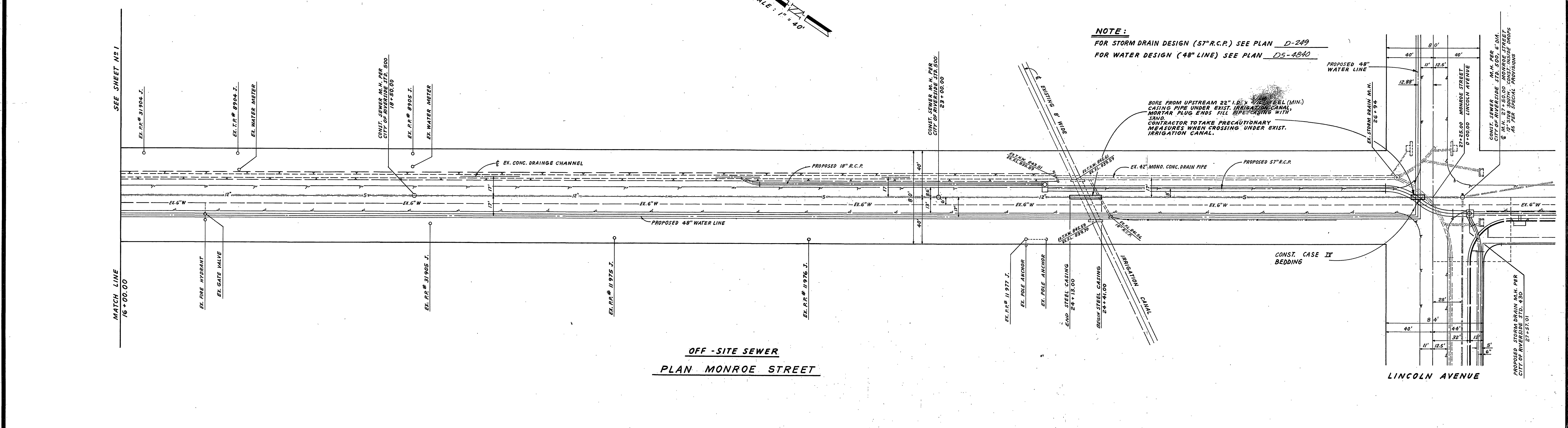
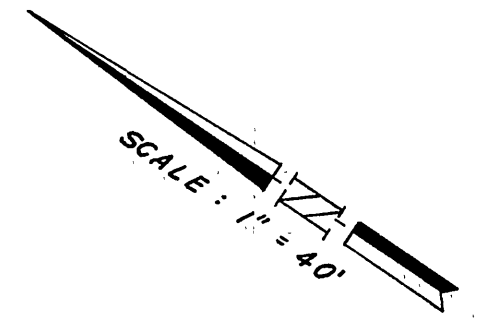
**BENCH MARK: F5-E**  
 SET P.K. NAIL AND TAG IN CULVERT HEADWALL AT E'LY. CORNER OF VICTORIA AVE. AND MONROE ST. F.B. 739 178 ELEV. 873.374

<b>APPROVED:</b>  GENERAL SUPERINTENDENT AND CHIEF ENGINEER WATER DEPARTMENT DATE: 12/18/72	<b>ANACAL ENGINEERING CO.</b> P.O. BOX 3648 222 EAST LINCOLN AVENUE ANAHEIM, CALIFORNIA 92803 PHONE NS (714) 774-1763 PREPARED UNDER THE SUPERVISION OF  CARL CZAPLINSKI, A.C.E. 0427	① DELETED M.H. AT STA. 14+85.00 ② REMOVED EX. 12" STUB AT M.H. STA. 10+94.00	<b>CITY OF RIVERSIDE, CALIFORNIA</b> DEPARTMENT OF PUBLIC WORKS APPROVED BY: OFFICE ENGINEER PARK DEPARTMENT TRAFFIC DIVISION ASSISTANT CITY ENG.	<b>MONROE STREET</b> <b>SEWER EXTENSION</b> <b>FOR TRACT NO. 4356</b> MONROE STREET, BETWEEN STARK STREET & LINCOLN AVE.	PROJECT NO. <b>5-918</b>
		DESIGNED BY H.K.S. DRAWN BY J.W.S. CHECKED BY H.K.S.			SHEET <b>1</b> OF <b>2</b>





**BENCH MARK: F5-E**  
 SET P.K. NAIL AND TAG IN CULVERT HEADWALL AT ELY. CORNER OF VICTORIA AVE. AND MONROE ST.  
 F.B. 739/78  
 ELEV. 873.374

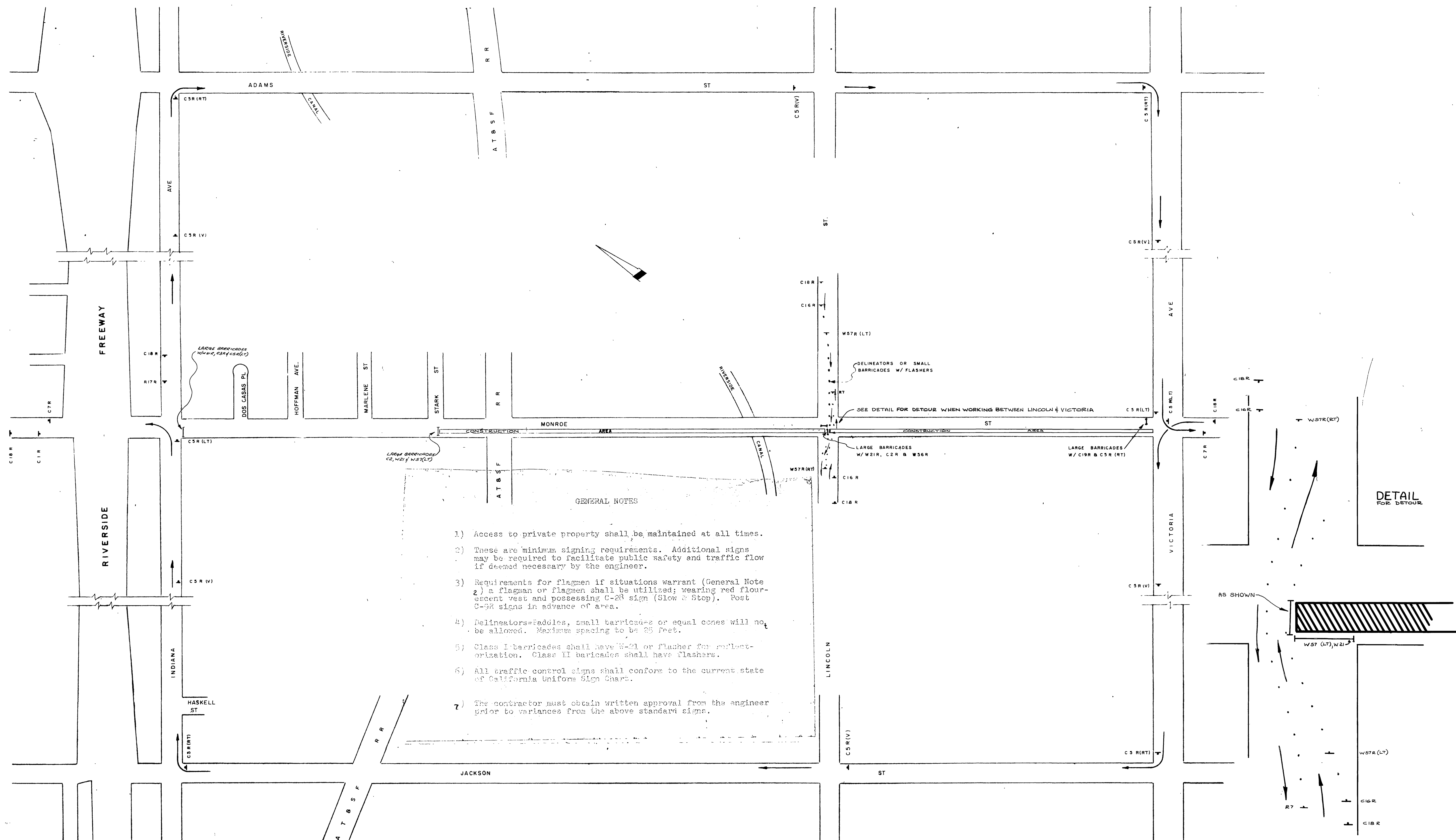


**NOTE:**  
 FOR STORM DRAIN DESIGN (57" R.C.P.) SEE PLAN D-249  
 FOR WATER DESIGN (48" LINE) SEE PLAN D5-4840

BORE FROM UPSTREAM 22" I.D. x 3/4" WALL THICKNESS STEEL (MIN.) CASING PIPE UNDER EXIST. IRRIGATION CANAL, MORTAR-PLUG ENDS - FILL PIPE CASING WITH SAND. CONTRACTOR TO TAKE PRECAUTIONARY MEASURES WHEN CROSSING UNDER EXIST. IRRIGATION CANAL.

<b>APPROVED:</b>  H.L. Creason (P.E. 1443) GENERAL SUPERINTENDENT AND CHIEF ENGINEER WATER DEPARTMENT DATE: 12/18/72	<b>ANACAL ENGINEERING CO.</b> P.O. BOX 3668 222 EAST LINCOLN AVENUE ANAHEIM, CALIFORNIA 92803 PHONE NO (714) 774-1763 PREPARED UNDER THE SUPERVISION OF  CARL CZAJKOWSKI, R.C.E. 0427 DATE 11-18-72	① REPLACED STEEL CASING WITH CASE II BEDDING ② REPLACED STD. M.H. 504 WITH STD. M.H. 500 1/4 8-26-73	<b>CITY OF RIVERSIDE, CALIFORNIA</b> DEPARTMENT OF PUBLIC WORKS APPROVED BY: OFFICE ENGINEER: PARK DEPARTMENT TRAFFIC DIVISION ASSISTANT CITY ENG. DATE 3-23-73	<b>MONROE STREET</b> <b>SEWER EXTENSION</b> FOR TRACT NO 4356 MONROE STREET, BETWEEN STARK STREET & LINCOLN AVE. HORIZ. SCALE: 1" = 40' VERT. SCALE: 1" = 8'	PROJECT NO. <b>5-918</b>
		DESIGNED BY M.K.S. DRAWN BY J.W.S. CHECKED BY M.K.S.			APPROVED BY: DIRECTOR OF PUBLIC WORKS DATE 3/24/73





GENERAL NOTES

- 1) Access to private property shall be maintained at all times.
- 2) These are minimum signing requirements. Additional signs may be required to facilitate public safety and traffic flow if deemed necessary by the engineer.
- 3) Requirements for flagmen if situations warrant (General Note 2) a flagman or flagmen shall be utilized; wearing red fluorescent vest and possessing C-28 sign (Slow & Stop). Post C-28 signs in advance of area.
- 4) Delineators=padding, small barricades or equal cones will not be allowed. Maximum spacing to be 25 feet.
- 5) Class I barricades shall have W-21 or Flasher for reflectorization. Class II barricades shall have flashers.
- 6) All traffic control signs shall conform to the current state of California Uniform Sign Chart.
- 7) The contractor must obtain written approval from the engineer prior to variances from the above standard signs.

**DETOUR MAP**  
 MONROE STREET STORM DRAIN EXTENSION  
 AND MONROE STREET SEWER EXTENSION

DATE 4-23-78  
 BY [Signature]  
 CHECKED [Signature]