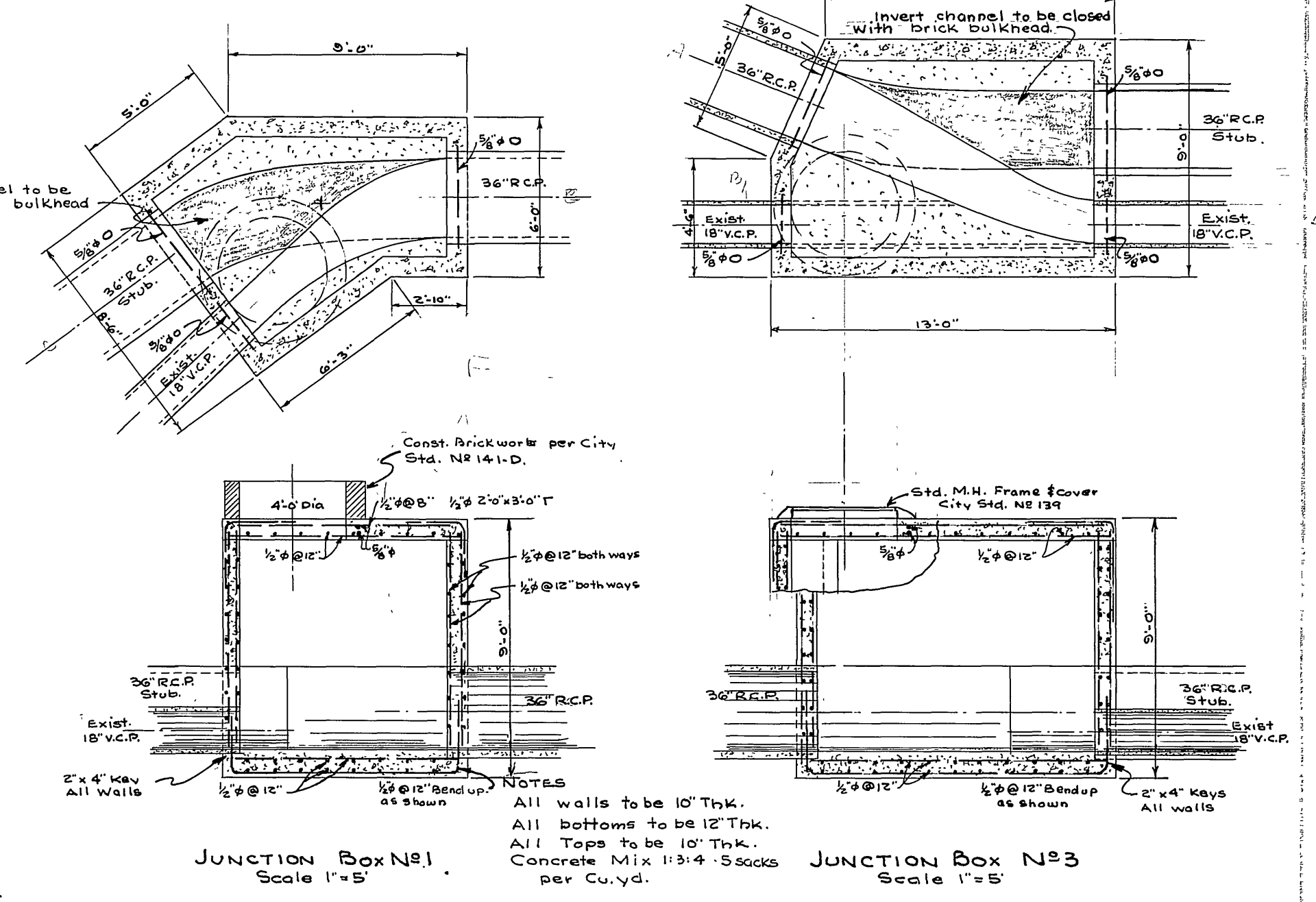


All work to conform to Standard Specifications of Div. of Highways except as noted on this dwg. & std. dwgs. referred to.
 R.C.P. to be 1250-D Minimum

AS BUILT NOTES:
 All as built distances are from center to center of structures.
 Boxes built per details at right, for exact outside dimensions. See Field book 587, page 48.



REVISIONS		CITY OF RIVERSIDE CALIFORNIA DEPARTMENT OF PUBLIC WORKS
DATE	DESCRIPTION	
1	8-8-57 Added Exist. Manhole Numbers and Elevations (dots)	Sewer Relocation NORTH SIDE OUTFALL SEWER UNDER Proposed Buena Vista Relocation at East End of Bridge
2	8-12-57 Changed Fl. grades	
3	8-23-57 Added As Built changes. (See as built notes above)	

CHECKED BY: *J.B.*
 APPROVED BY: *[Signature]*
 DIRECTOR OF PUBLIC WORKS
 DATE: _____ SHEET 1 OF 1

PROFILE COVERED
 PLATE NO. 1
 SHEET NO. 1
 STRUCTURE NO. 1

PLATE NO. 1
 SHEET NO. 1
 STRUCTURE NO. 1