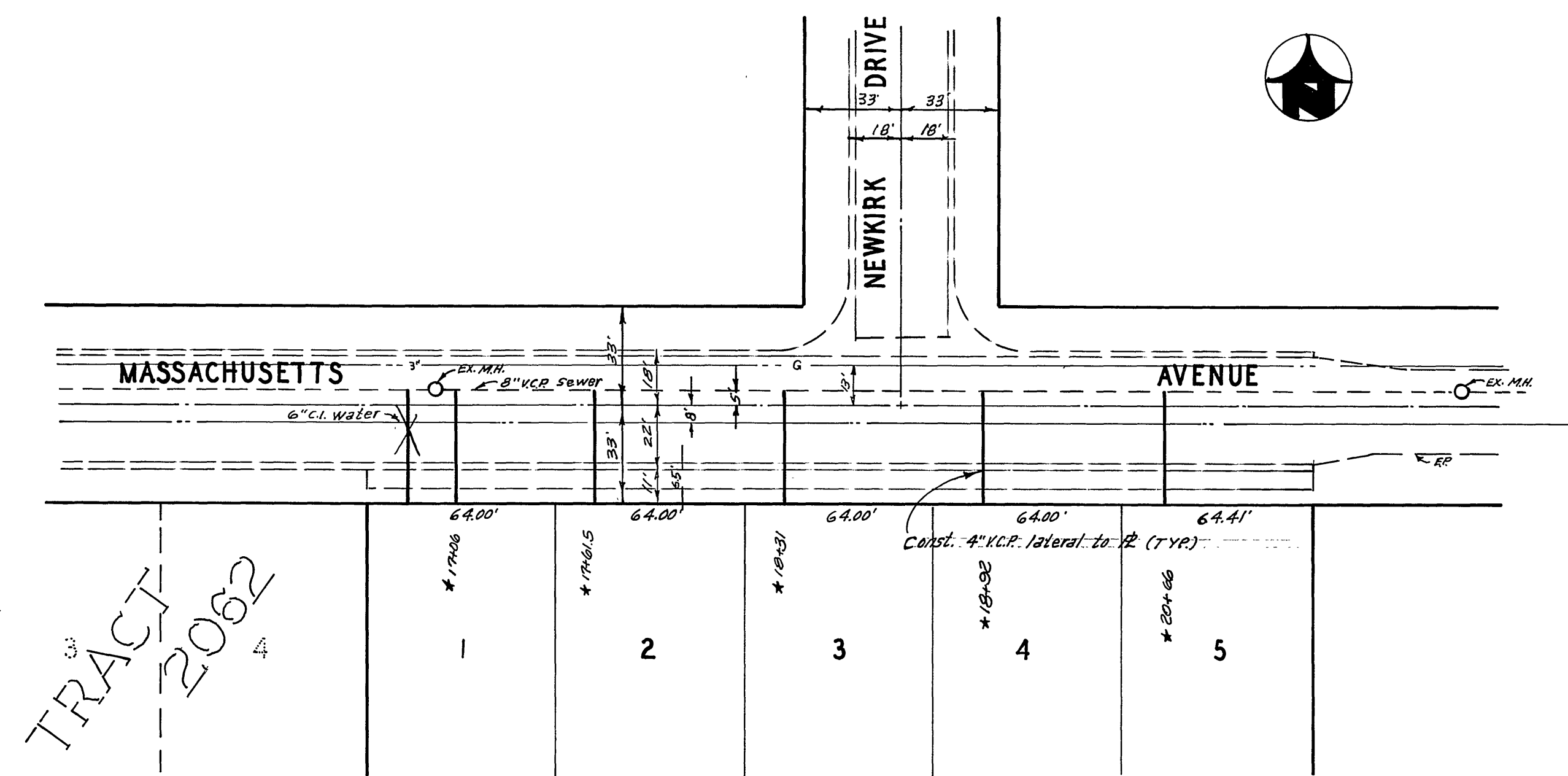


**BENCH MARK**

Elev. 962.98 PK nail in concrete headwall S.E. corner Iowa & Spruce. C/R F.B. 682/78



TRACT 2062

**GENERAL NOTES**

- Construction shall be in accordance with the Standard Specifications for Public Works Construction, 1970 Edition, and City of Riverside Standard Drawings.
- Location of wyes and laterals to be determined at the direction of the owner.
- Manhole frames and covers to be set at existing or proposed grades.

APPROVED BY  
*Howard L. Oranson* 7-14-73  
CHIEF WATER UTILITY ENGINEER

ALBERT A. WEBB ASSOCIATES  
CIVIL ENGINEERS  
RIVERSIDE, CALIFORNIA  
APPROVED BY *Emil N. Webb* DATE 11/10/73  
R.E. No. 9876  
W.O. 72-270 FOR: Lewis Homes Inc. F.B. 1027

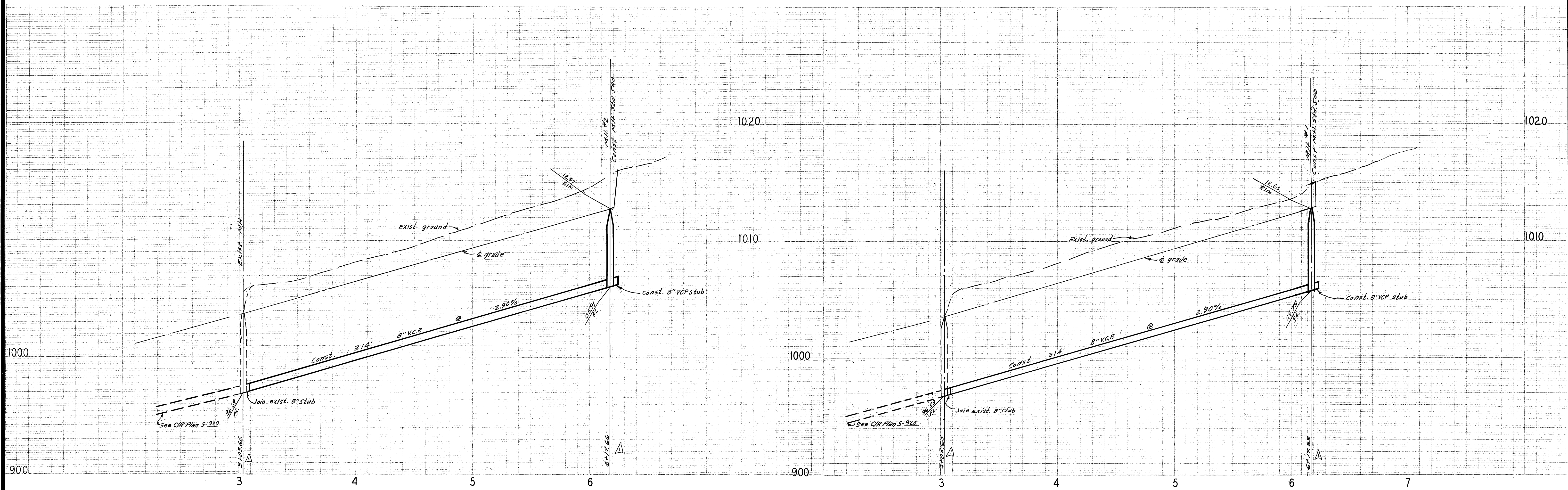
★	AS BUILT	R.A.B.	6-73
MARK	REVISIONS	APPR.	DATE
DESIGNED BY		DRAWN BY	CHECKED BY
<i>BEL</i>		<i>BEL</i>	<i>L.I.</i>

CITY OF RIVERSIDE, CALIFORNIA  
PUBLIC WORKS DEPARTMENT

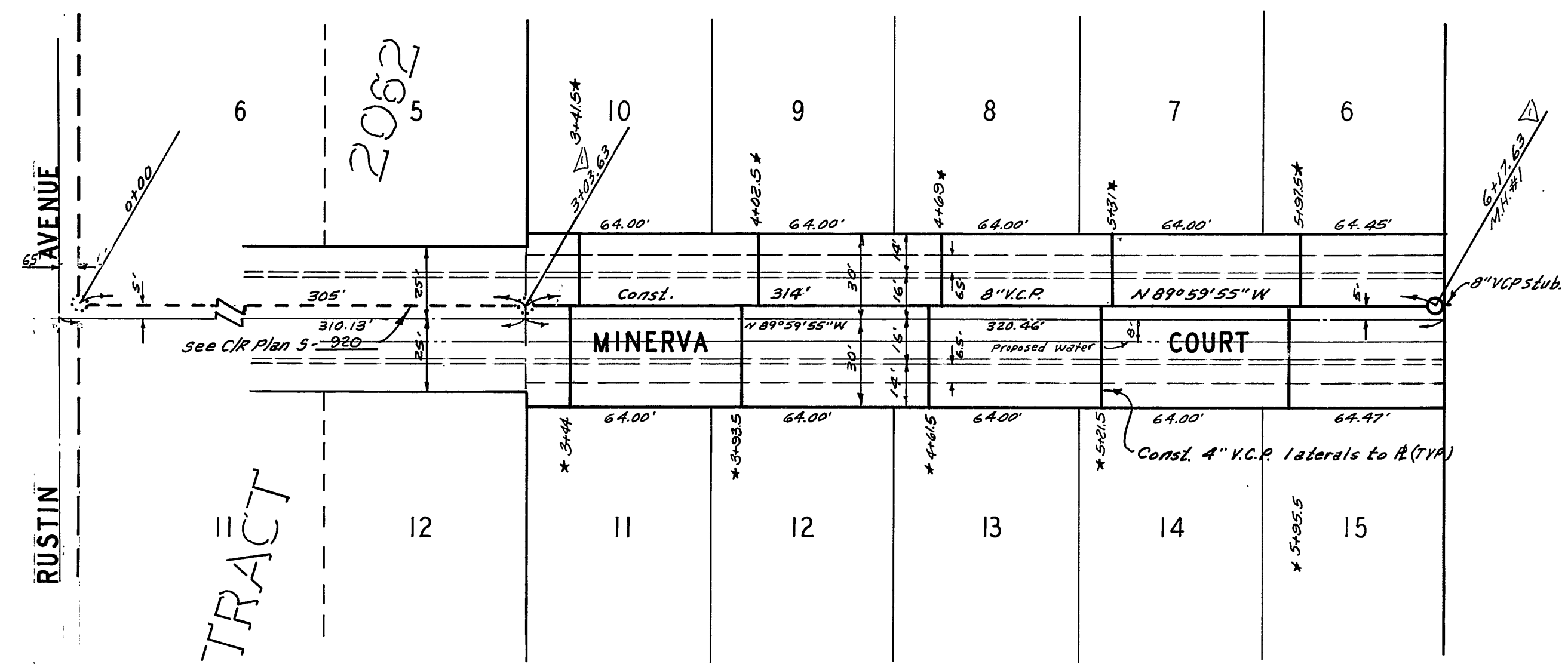
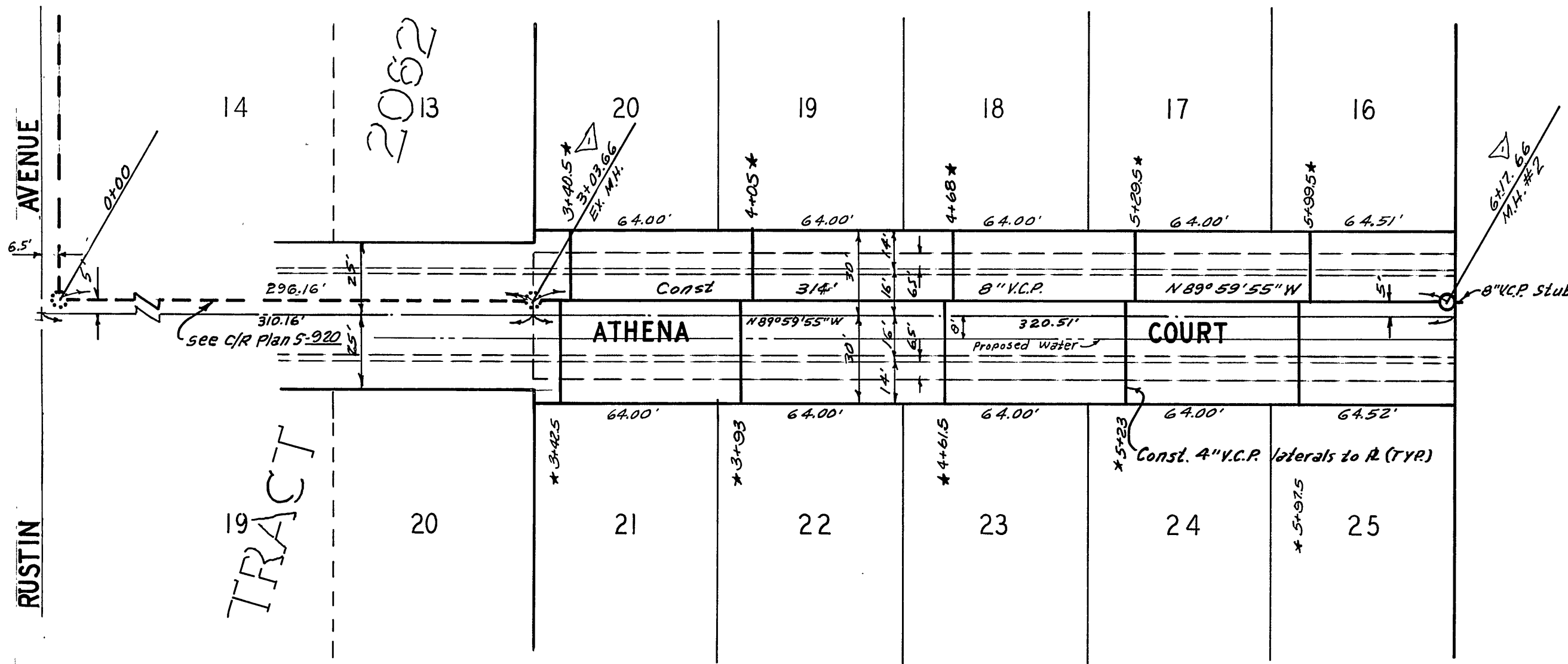
APPROVED BY	BY	DATE
PRINCIPAL ENGINEER	<i>E.L.B.</i>	
PARK DEPARTMENT		
TRAFFIC DIVISION		
CHIEF PUB. WKS. ENGR.	<i>E.L.B.</i>	2-13
APPROVED BY		
DIRECTOR OF PUBLIC WORKS	<i> </i>	
DATE		2-20-73

SEWER PLAN AND PROFILE  
MASSACHUSETTS AVENUE  
TRACT NO. 4790  
SCALE: 1" = 40' Horiz., 1" = 4' Vert.

ACCOUNT No.	
DRAWING NUMBER	
	5-921
SHEET	1 OF 2
	72-270-B



BENCH MARK  
 Elev. 962.90, PK nail in concrete headwall S.E. corner Iowa Spruce  
 CIR F.B. 602/78



★ AS BUILT RAB 9-73

APPROVED BY <i>Howard L. Cream</i> 7-13-73 CHIEF WATER UTILITY ENGINEER	ALBERT A. WEBB ASSOCIATES CIVIL ENGINEERS RIVERSIDE, CALIFORNIA	CITY OF RIVERSIDE, CALIFORNIA PUBLIC WORKS DEPARTMENT	SEWER PLAN AND PROFILE MINERVA COURT ATHENA COURT TRACT NO. 4790	ACCOUNT No. DRAWING NUMBER <b>5-921</b>
	APPROVED BY <i>Paul H. Hill</i> DATE <i>11/16/73</i> R.E. No. <i>9876</i> W.O. 72-270 FOR: <i>Lewis Homes Inc.</i> F.B. 1027			DESIGNED BY <i>BEL</i> DRAWN BY <i>BEL</i> CHECKED BY <i>L.L.</i>