

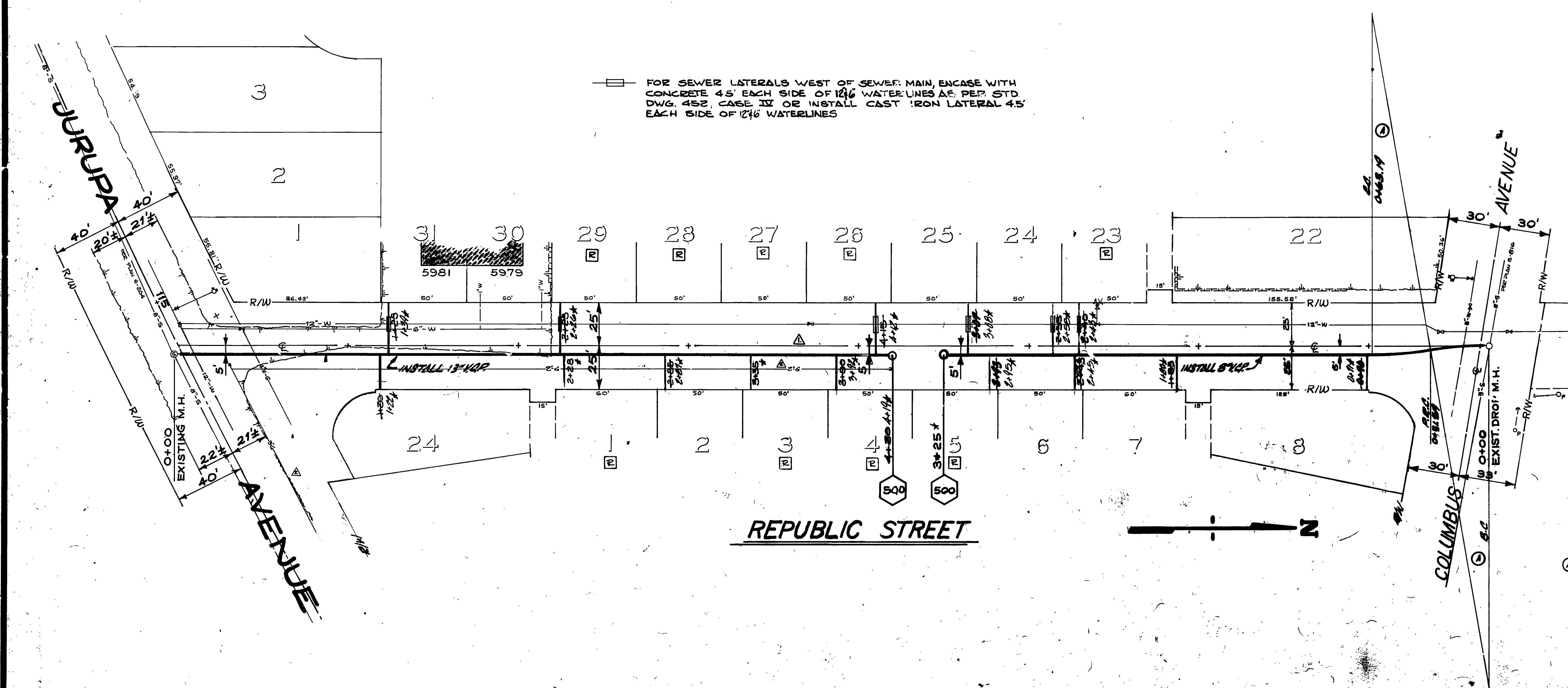
CONSTRUCTION LEGEND

CONSTRUCT PER CITY OF RIVERSIDE STANDARD DRAWINGS:

- SEWER MANHOLE PER STD. DWG. 500
- STANDARD CLEANOUT PER STD. DWG. 560
- INSTALL 4" SEWER LATERALS TO PROPERTY LINE PER STD. DWG. 562
 - 1) PIPE BEDDING SHALL BE PER STD. DWG. 452 CASE I
 - 2) TRENCH BACKFILL SHALL BE PER STD. DWG. 453
- INDICATES THAT PROPERTY OWNER HAS REQUESTED LOCATION OF SEWER LATERAL

CONSTRUCTION SHALL BE ACCORDING TO STANDARD SPECIFICATIONS FOR PUBLIC WORKS CONSTRUCTION, 1975 EDITION.

F.B. 961/53
 ELEV. 805.02
 B.M. CHISELED X TOP OF F.H., N.W. CORNER OF PUBLIC COLUMBUS.



① CURVE DATA
 R = 200'
 Δ = 94° 00'
 L = 31.57'
 T = 15.84'

RECEIVED BY DESIGNER CHECKER	CITY OF RIVERSIDE, CALIFORNIA DEPARTMENT OF PUBLIC WORKS APPROVED BY PRINCIPAL ENGINEER PARK DEPARTMENT TRAFFIC DIVISION	REPUBLIC ST. ASSESSMENT DIST. 5 SET FOR CONSTRUCTION OF SEWER SCALE: 1" = 40' VERT. LABEL
------------------------------------	---	--