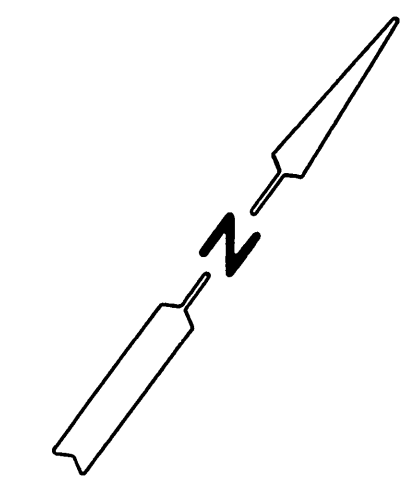


**INDEX MAP**  
SCALE: 1"=50'

**GENERAL NOTES**

1. Construction shall be in accordance with the Standard Specifications for Public Works Construction, 1970 Edition, and City of Riverside Standard Drawings.
2. It shall be the responsibility of the contractor to clear the right of way in accordance with the provisions of the law as it affects such utility including irrigation lines and easements and at no cost to the City.
3. Pipe shall be bedded per Case 1, Standard Drawing No. 452, unless otherwise specified on plan.
4. Location of pipe and laterals to be determined at the direction of the owner.
5. All stubs and laterals to be constructed in accordance with Standard Drawing No. 522. Stubs shall be plugged and capped.
6. Manhole frames and covers to be set as noted in profile.
7. Laterals are 18" and extend to property line.
8. Prior to construction of sewer, contractor is to expose existing sewer and contact Engineer for verification of existing elevations.



**BENCH MARK:**  
CITY OF RIVERSIDE B.M. # F-5-E BEING A P.K. NAIL IN CULV. HEADWALL @ ELY. COR. OF VICTORIA & MONROE. ELEV. = 873.374'

APPROVED BY  
*Harold A. Orenan* 3-20-73  
CHIEF WATER UTILITY ENGINEER

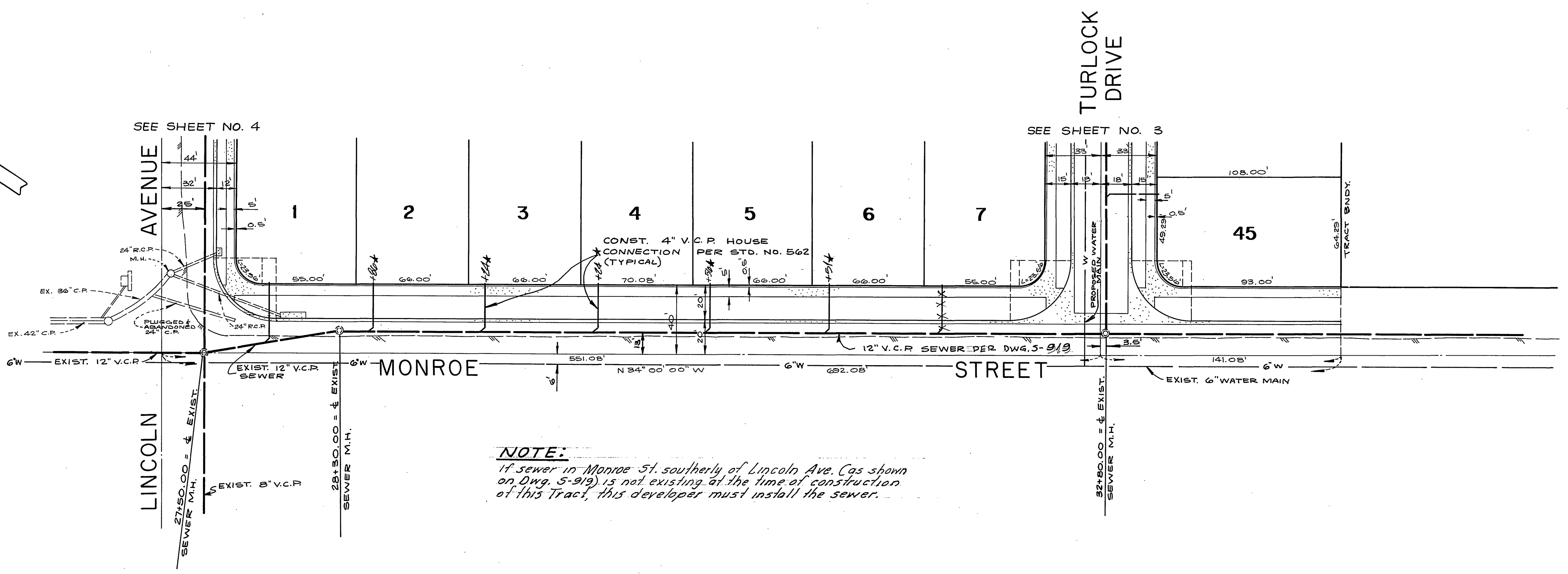
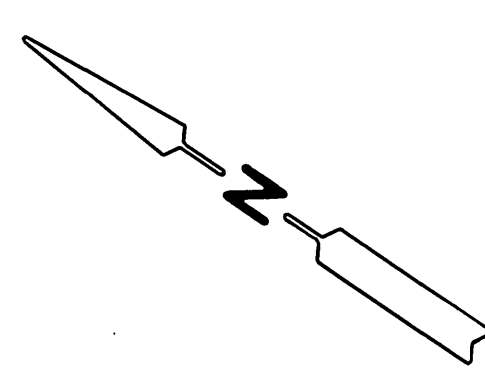
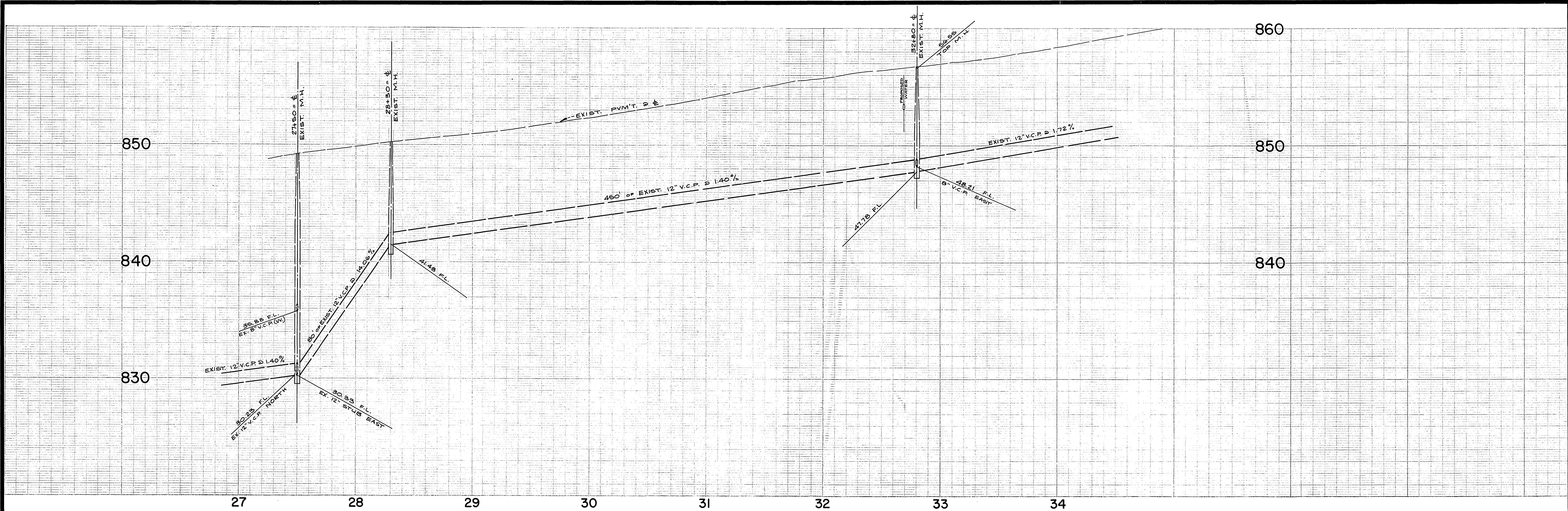
ALBERT A. WEBB ASSOCIATES  
CIVIL ENGINEERS  
RIVERSIDE, CALIFORNIA  
APPROVED BY *Robert N. Webb* DATE 4/23/73  
R.E. No. 9870

MARK	REVISIONS	APPR.	DATE

CITY OF RIVERSIDE, CALIFORNIA  
DEPARTMENT OF PUBLIC WORKS  
APPROVED BY *William S. Anderson*  
OFFICE ENGINEER DATE 4/23/73  
PARK DEPARTMENT  
TRAFFIC DIVISION  
ASSISTANT CITY ENG.

SEWER PLAN AND PROFILE  
**INDEX MAP**  
**TRACT NO. 4763-1**

PROJECT NO. 72-538  
**S-929**  
SHEET 1 OF 6  
FILE NO. 72-338 B



**NOTE:**  
 If sewer in Monroe St. southerly of Lincoln Ave. (as shown on Dwg. S-919) is not existing at the time of construction of this Tract, this developer must install the sewer.

**BENCH MARK:**  
 CITY OF RIVERSIDE B.M. # F-5-E BEING A PK. NAIL IN CULV. HEADWALL @ ELY. COR. OF VICTORIA & MONROE. ELEV. 873.374

APPROVED BY  
*Howard L. Orason* 3-20-73  
 CHIEF WATER UTILITY ENGINEER

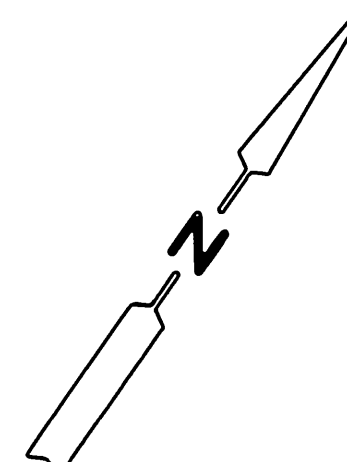
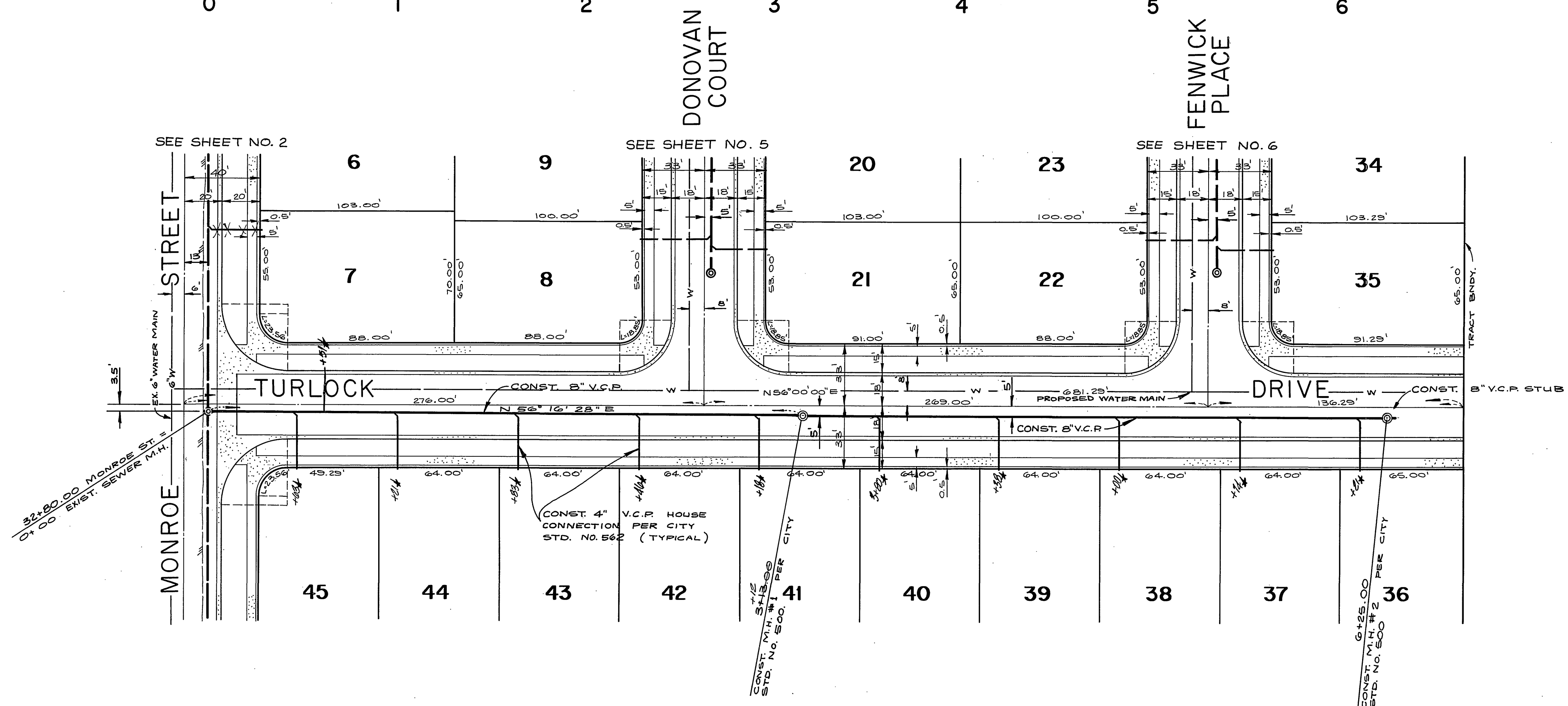
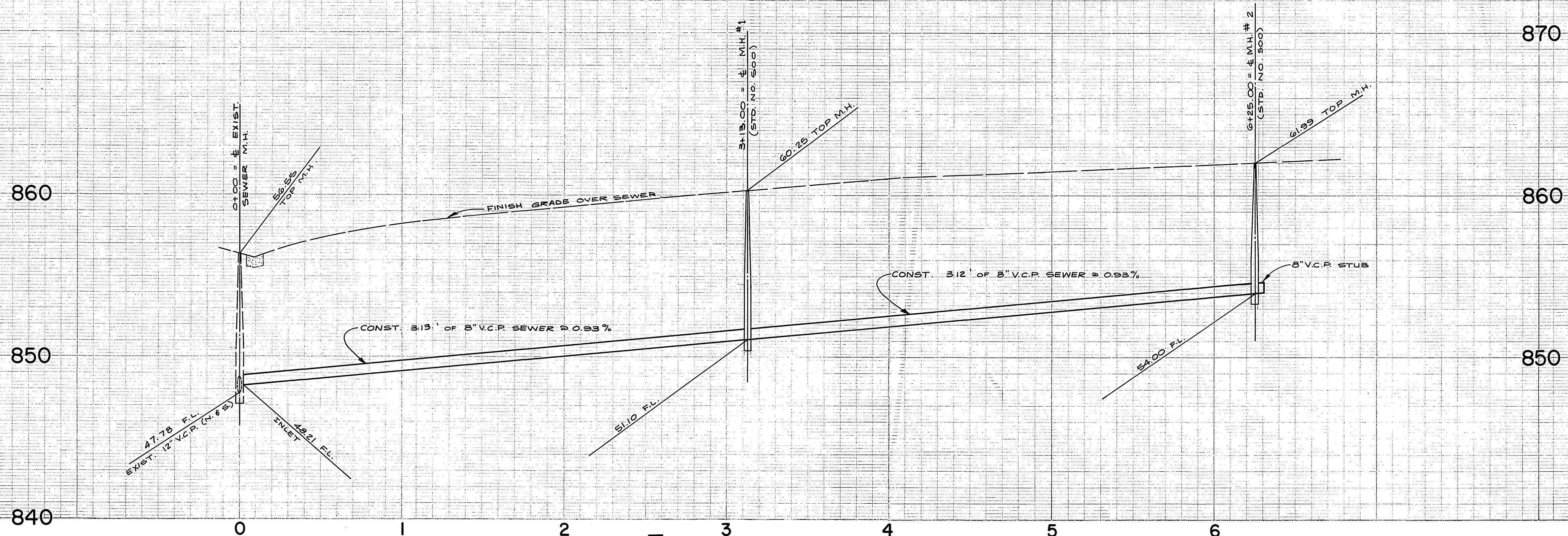
ALBERT A. WEBB ASSOCIATES  
 CIVIL ENGINEERS  
 RIVERSIDE, CALIFORNIA  
 APPROVED BY *Albert A. Webb* DATE 4/24/73  
 R.E. No. 9876

MARK	REVISIONS	APPR.	DATE

CITY OF RIVERSIDE, CALIFORNIA  
 PUBLIC WORKS DEPARTMENT  
 APPROVED BY *William D. Hardman* DATE 4/19/73  
 CHIEF PUB. WKS. ENGR.

SEWER PLAN AND PROFILE  
 MONROE STREET  
 TRACT NO. 4763-1  
 SCALE: HORIZ. 1"=40' ; VERT. 1"=4'

ACCOUNT No. 72-338  
 DRAWING NUMBER  
**S-929**  
 SHEET 2 OF 6  
 72-338 B



BENCH MARK:  
CITY OF RIVERSIDE S.M.# F-5-E BEING A P.K. NAIL IN CULV.  
HEADWALL @ ELY. COR. OF VICTORIA & MONROE. ELEV. = 873.374

APPROVED BY  
*Harold A. Green* 3-20-73  
CHIEF WATER UTILITY ENGINEER

ALBERT A. WEBB ASSOCIATES  
CIVIL ENGINEERS  
RIVERSIDE, CALIFORNIA  
APPROVED BY *Albert A. Webb* DATE 11/24/72  
R.E. No. 9876  
W.O. 72-338 FOR HOOD ASSOCIATES F.B. 1026

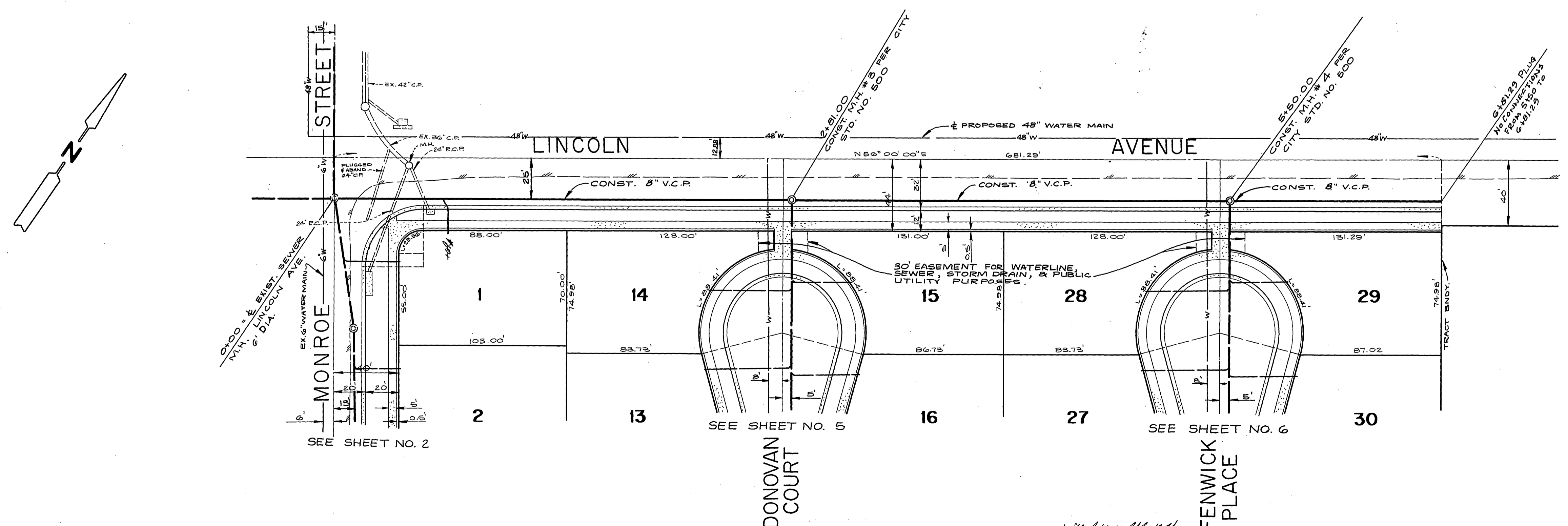
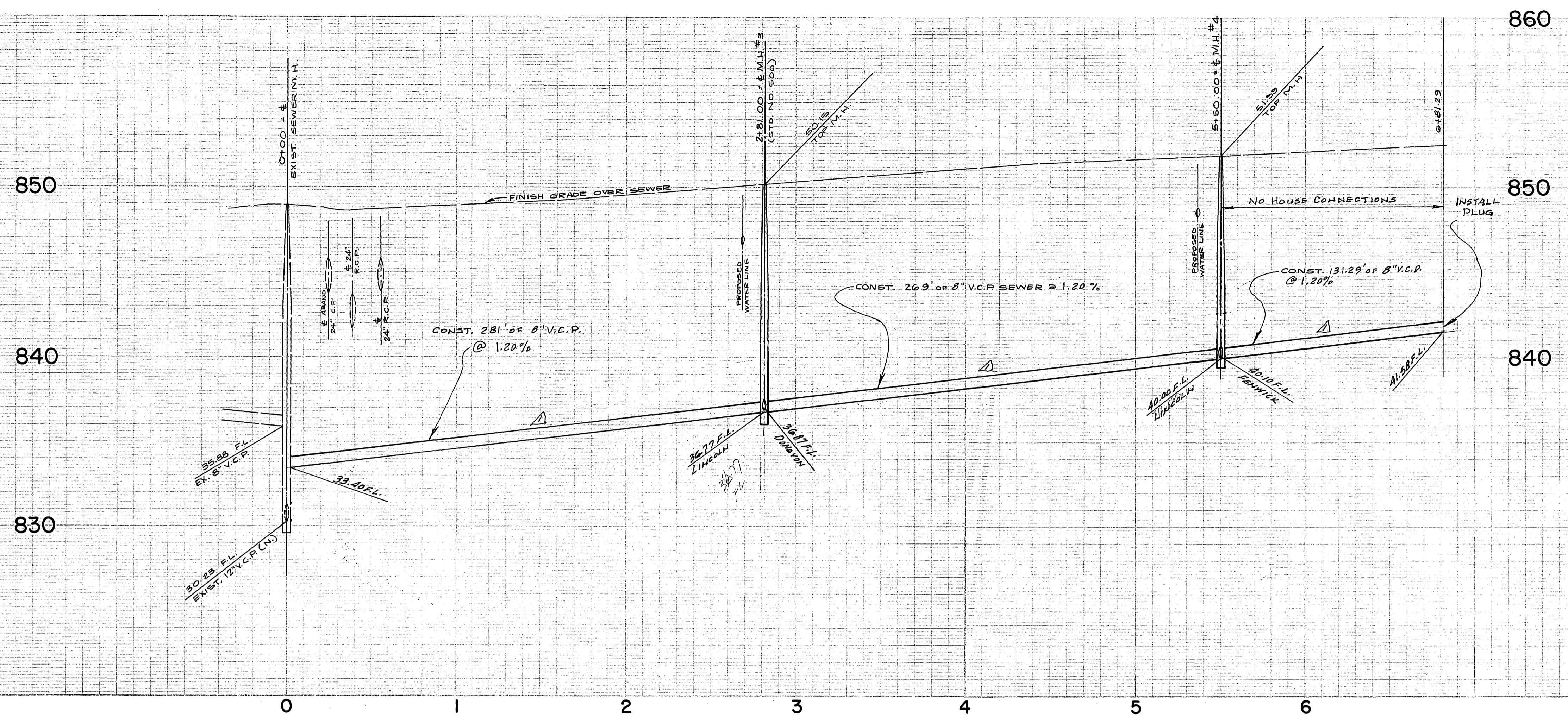
\*AS BUILT 12/10/74

MARK	REVISIONS	APPR.	DATE

CITY OF RIVERSIDE, CALIFORNIA  
PUBLIC WORKS DEPARTMENT  
APPROVED BY *William J. Hansen*  
PRINCIPAL ENGINEER  
FARK DEPARTMENT  
TRAFFIC DIVISION  
CHIEF PUB. WKS. ENGR.  
DATE 4/3/73

ACCOUNT No. 72-338  
DRAWING NUMBER  
TURLOCK DRIVE  
TRACT NO. 4763-1  
SCALE: HORIZ. 1" = 40' ; VERT. 1" = 4'

SHEET 3 OF 6  
72-338 B



BENCH MARK:  
 CITY OF RIVERSIDE B.M. # F-5-E BEING A PK. NAIL IN CULV.  
 HEADWALL @ ELY. COR. OF VICTORIA & MONROE, ELEV. = 873.374'

APPROVED BY  
*Howard R. Peterson* 3-20-73  
 CHIEF WATER UTILITY ENGINEER

ALBERT A. WEBB ASSOCIATES  
 CIVIL ENGINEERS  
 RIVERSIDE, CALIFORNIA  
 APPROVED BY *Robert Webb* DATE 11/24/72  
 R.E. No. 9272

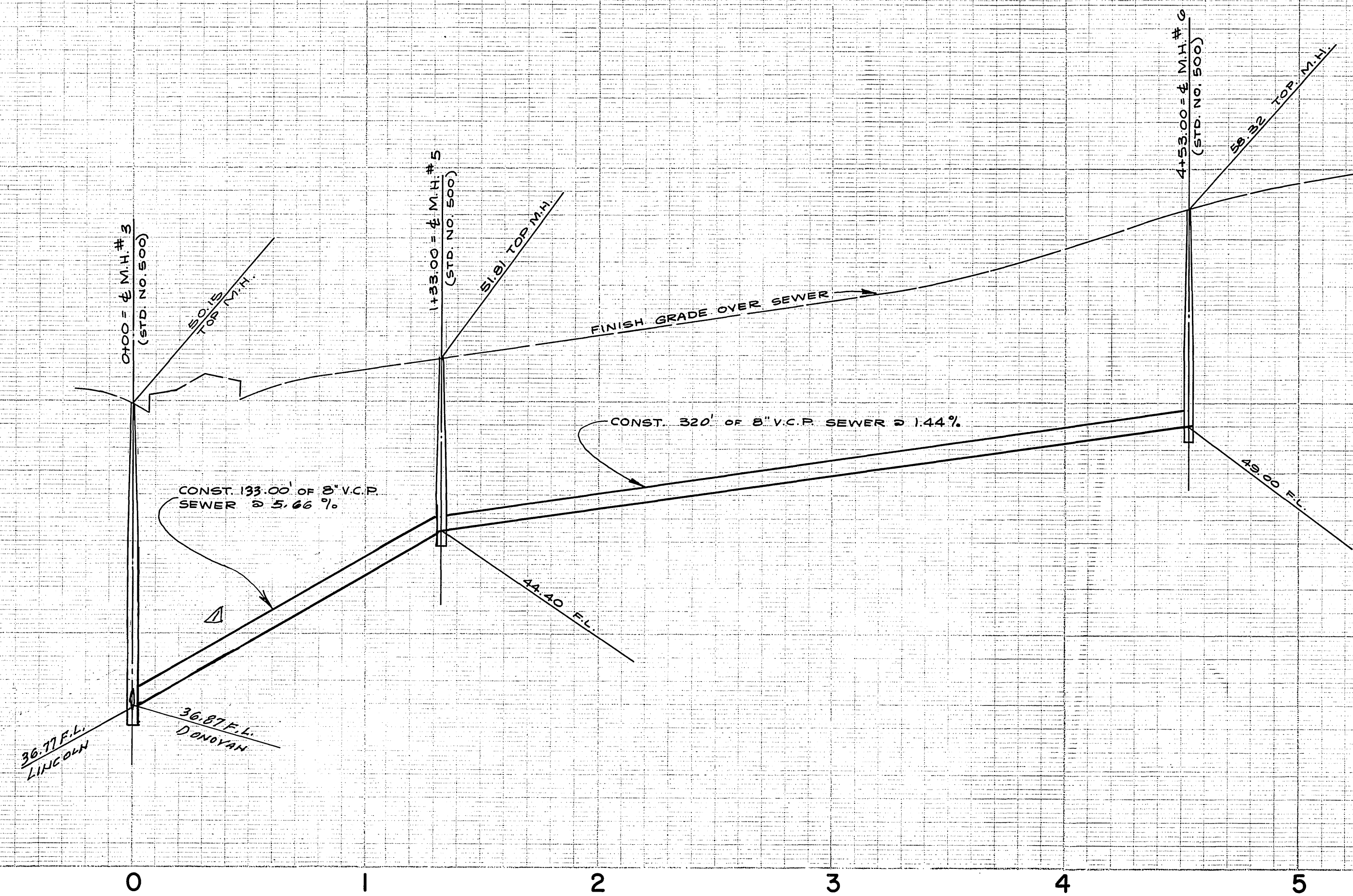
DESIGNED BY L.R.B. DRAWN BY B.W. CHECKED BY L.R.B.

CITY OF RIVERSIDE, CALIFORNIA  
 PUBLIC WORKS DEPARTMENT  
 APPROVED BY *William D. Gardner* DATE 4/9/73  
 PRINCIPAL ENGINEER  
 PARK DEPARTMENT  
 TRAFFIC DIVISION  
 CHIEF PUB. WKS. ENGR.

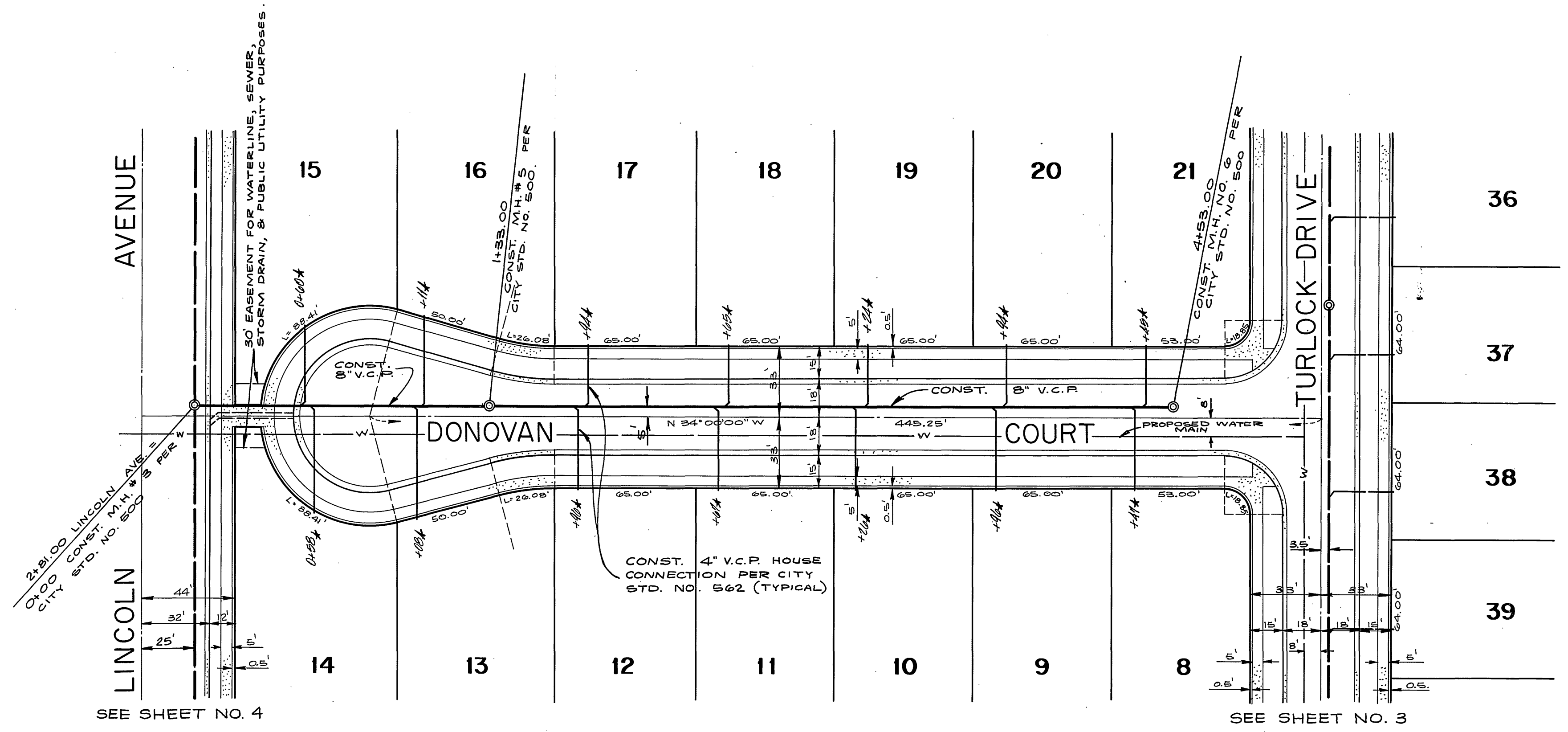
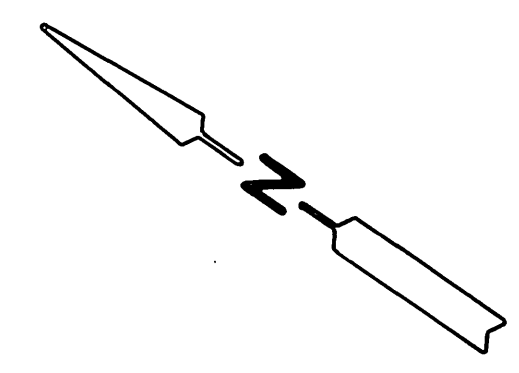
SEWER PLAN AND PROFILE  
 LINCOLN AVENUE  
 TRACT NO. 4763-1  
 SCALE: HORIZ. 1"=40' ; VERT. 1"=4'

ACCOUNT No. 72-338  
 DRAWING NUMBER  
**5-929**  
 SHEET 4 OF 6  
 72-338 B

860  
850  
840



860  
850



SEE SHEET NO. 4

SEE SHEET NO. 3

BENCH MARK:  
CITY OF RIVERSIDE B.M. # F-5-E BEING A PK. NAIL IN CULV.  
HEADWALL @ E'LY. COR. OF VICTORIA & MONROE. ELEV. = 873.374

APPROVED BY  
*Howard R. Oren* 3-20-73  
CHIEF WATER UTILITY ENGINEER

ALBERT A. WEBB ASSOCIATES  
CIVIL ENGINEERS  
RIVERSIDE, CALIFORNIA  
APPROVED BY *Donna Hill* DATE 11/24/72  
R.E. No. 9870

DESIGNED BY *L.E.B.* DRAWN BY *B.W.* CHECKED BY *L.E.B.*

CITY OF RIVERSIDE, CALIFORNIA  
PUBLIC WORKS DEPARTMENT  
APPROVED BY *William D. Hardin*  
DIRECTOR OF PUBLIC WORKS  
DATE 4/2/73

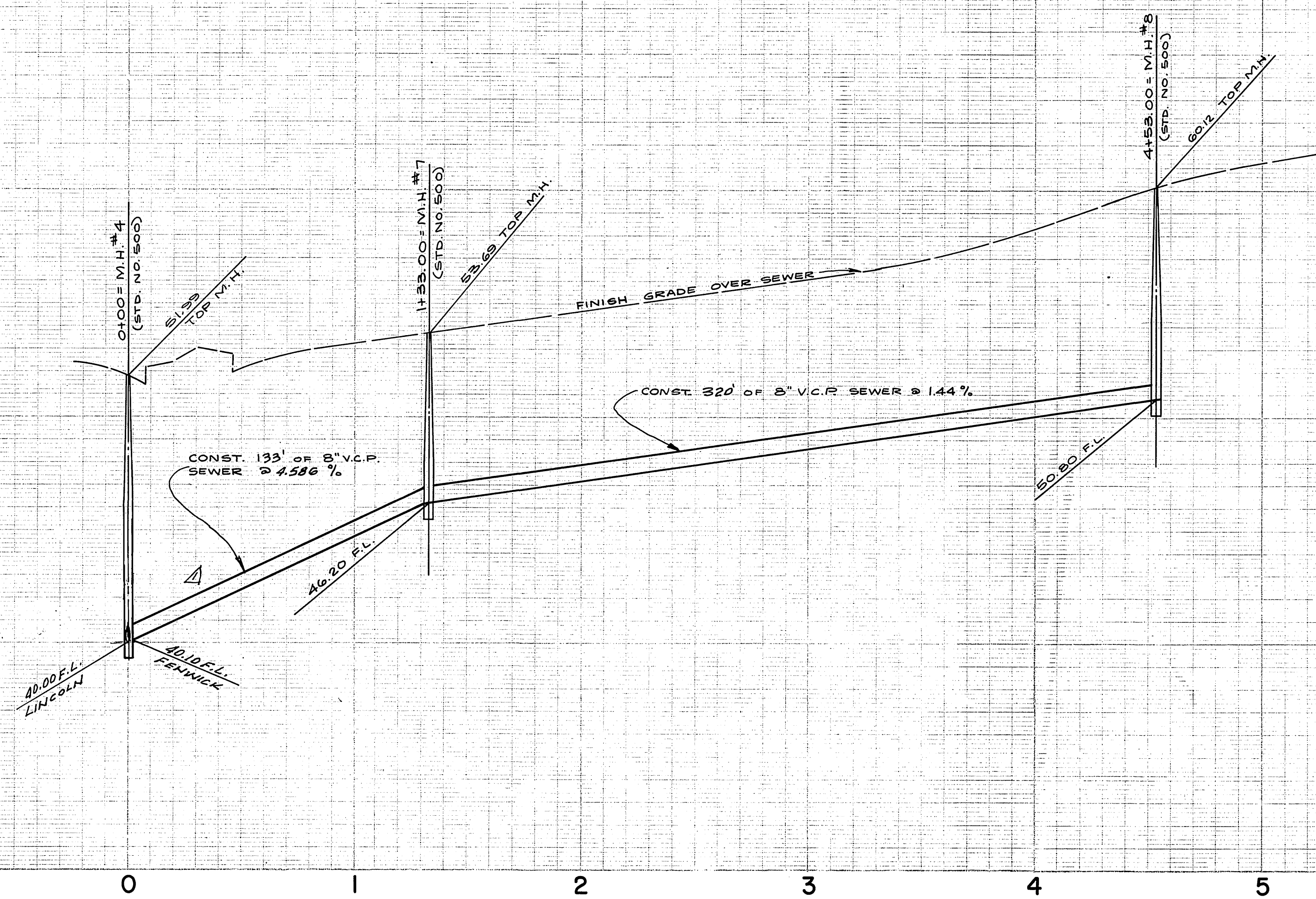
SEWER PLAN AND PROFILE  
DONOVAN COURT  
TRACT NO. 4763-1  
SCALE: HORIZ. 1"=40' ; VERT. 1"=4'

ACCOUNT No. 72-338  
DRAWING NUMBER  
**5-929**  
SHEET 5 OF 6  
72-338 B

860

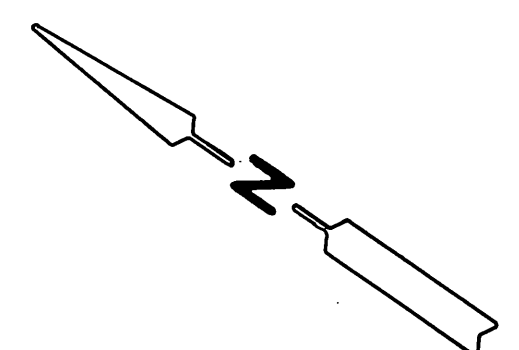
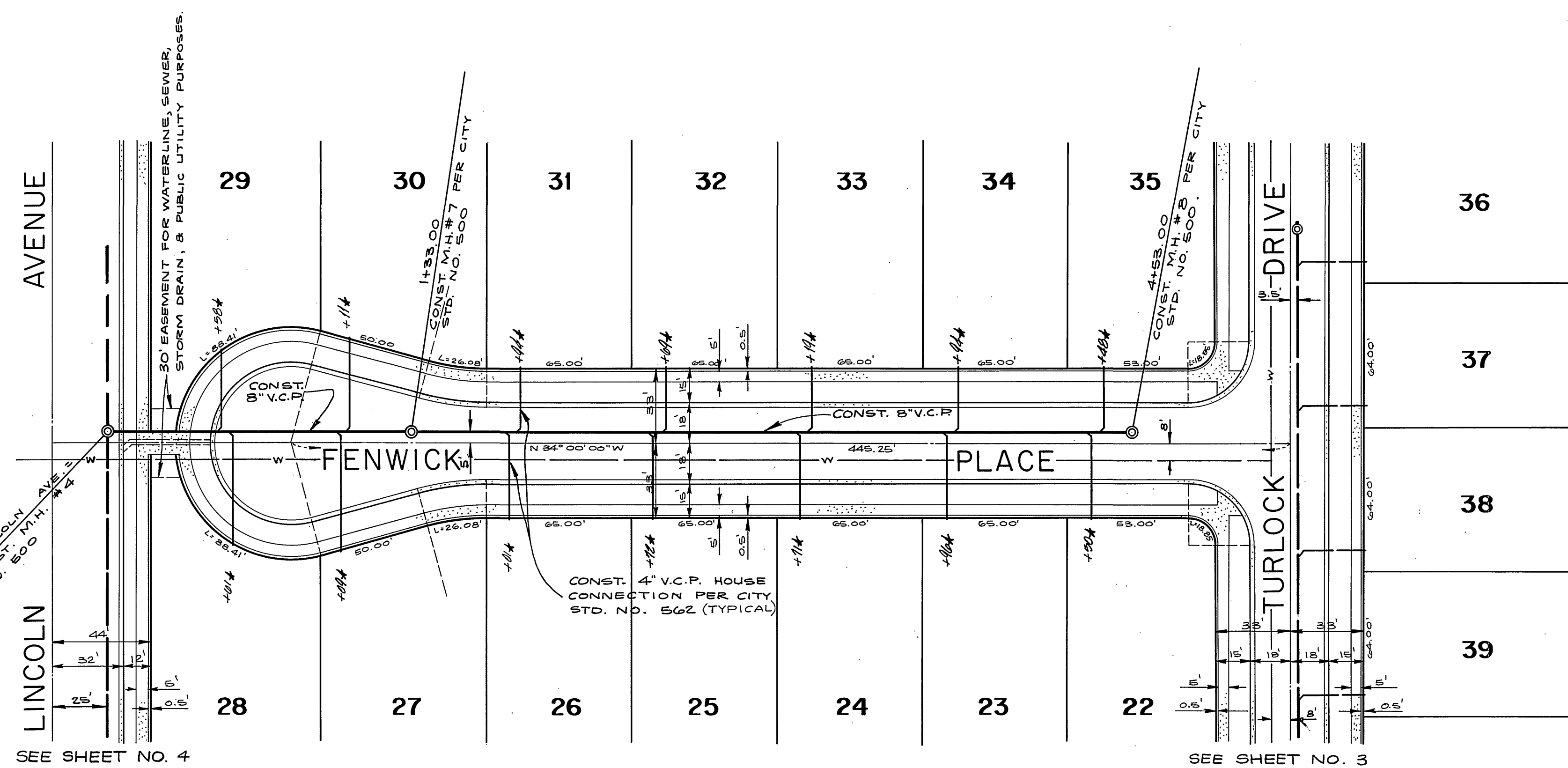
850

840



860

850



BENCH MARK:  
 CITY OF RIVERSIDE B.M. # F-5-E BEING A PK. NAIL IN CULV.  
 HEADWALL @ E'LY. COR. OF VICTORIA & MONROE, ELEV. = 873.374'

APPROVED BY  
*Howard R. Cronson* 3-20-73  
 CHIEF WATER UTILITY ENGINEER

ALBERT A. WEBB ASSOCIATES  
 CIVIL ENGINEERS  
 RIVERSIDE, CALIFORNIA  
 APPROVED BY *[Signature]* DATE 11/24/72  
 R.E. No. 9870

DESIGNED BY L.R.B. DRAWN BY B.W. CHECKED BY L.R.B.  
 W.O. 72-338 FOR: HOOD ASSOCIATES F.B. 1026

CITY OF RIVERSIDE, CALIFORNIA  
 PUBLIC WORKS DEPARTMENT  
 APPROVED BY *[Signature]* DATE 4/9/73  
 CHIEF PUB. WKS. ENGR.

SEWER PLAN AND PROFILE  
 FENWICK PLACE  
 TRACT NO. 4763-1  
 SCALE: HORIZ. 1"=40' ; VERT. 1"=4'

ACCOUNT No. 72-338  
 DRAWING NUMBER  
**S-929**  
 SHEET 6 OF 6  
 72-338 B