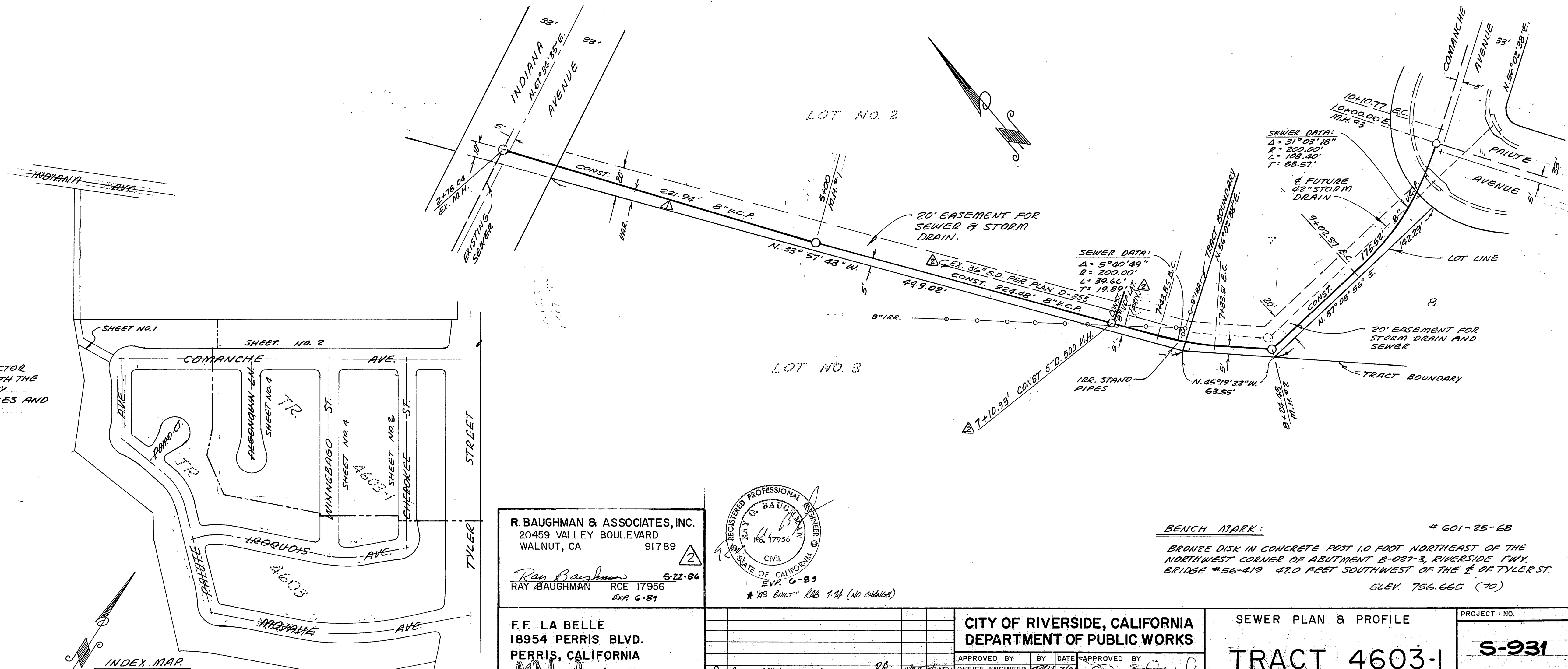


**CONSTRUCTION NOTES:**

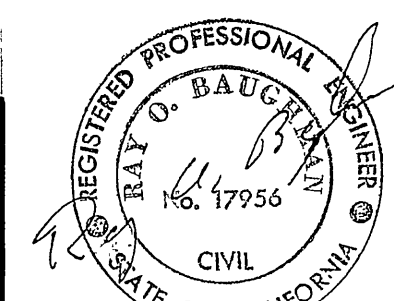
1. ALL SEWER LATERALS SHALL BE IN ACCORDANCE WITH STD. DWG. NO. 562
2. ALL SEWER LATERALS SHALL BE 4" H.C.P.

**GENERAL NOTES:**

1. CONSTRUCTION SHALL BE DONE IN ACCORDANCE WITH THE STANDARD SPECIFICATIONS FOR PUBLIC WORKS CONSTRUCTION, 1970 EDITION, AND THE CITY OF RIVERSIDE STANDARD DRAWINGS.
2. IT SHALL BE THE RESPONSIBILITY OF THE CONTRACTOR TO CLEAR THE RIGHT OF WAY IN ACCORDANCE WITH THE PROVISIONS OF LAW AS IT AFFECTS EACH UTILITY INCLUDING IRRIGATION LINES AND APPURTENANCES AND AT NO COST TO THE CITY.
3. LOCATION OF WYES AND LATERALS TO BE DETERMINED IN THE FIELD BY THE OWNER.



R. BAUGHMAN & ASSOCIATES, INC.  
 20459 VALLEY BOULEVARD  
 WALNUT, CA 91789  
 Ray Baughman  
 RCE 17956  
 EXP. 6-89



F. F. LA BELLE  
 18954 PERRIS BLVD.  
 PERRIS, CALIFORNIA  
 F. F. LA BELLE R.C.E. 9239

CITY OF RIVERSIDE, CALIFORNIA  
 DEPARTMENT OF PUBLIC WORKS  
 APPROVED BY: [Signature] DATE: 3/21/73  
 OFFICE ENGINEER  
 PARK DEPT.  
 TRAFFIC DIV.  
 ASST. CITY ENG. [Signature] DATE: 3/22/73

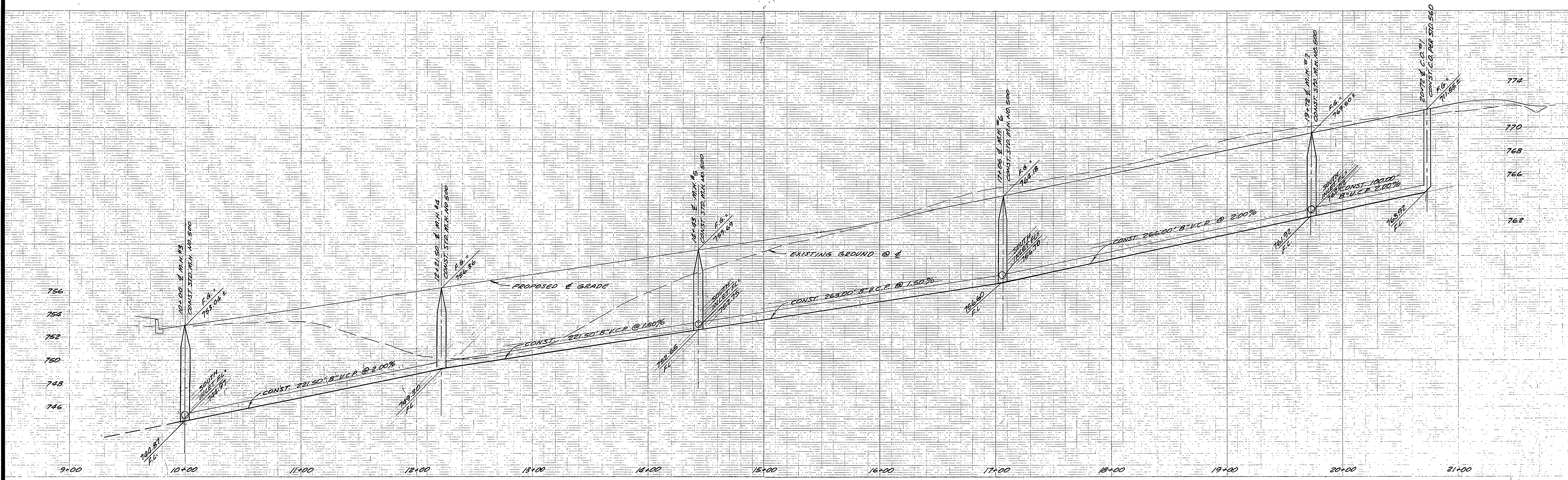
SEWER PLAN & PROFILE  
**TRACT 4603-1**  
 PROJECT NO. S-931  
 SHEET 1 OF 4  
 HORIZ. SCALE: 1" = 40'  
 VERT. SCALE: 1" = 4'

BENCH MARK: # 601-25-68  
 BRONZE DISK IN CONCRETE POST 1.0 FOOT NORTHEAST OF THE NORTHWEST CORNER OF ABUTMENT B-027-3, RIVERSIDE Fwy. BRIDGE #56-419 47.0 FEET SOUTHWEST OF THE E. OF TYLER ST. ELEV. 756.665 (70)

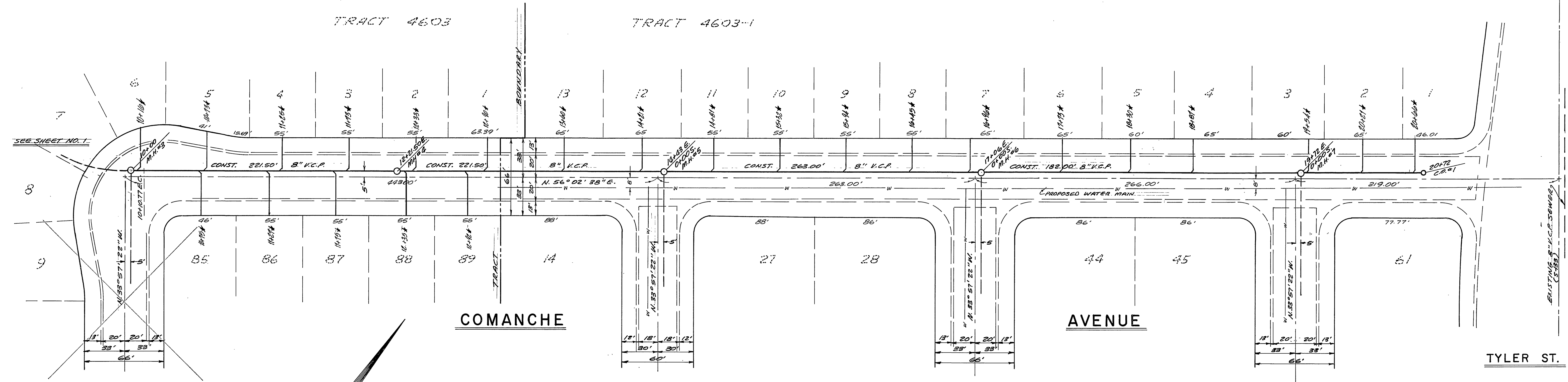
APPROVED BY WATER DIV.  
 DATE: 3-19-73

INDEX MAP  
 SCALE 1" = 200'





SEE SHEET 1 FOR CONSTRUCTION NOTES.



PAIUTE AVENUE

COMANCHE AVENUE

ALGONQUIN LANE

WINNEBAGO STREET

CHEROKEE STREET

TYLER ST.

PLAN SCALE  
SCALE 1"=40'

BENCH MARK: # 601-25-68  
BRONZE DISK IN CONCRETE POST 1.0 FEET  
NORTHWEST CORNER OF THE NORTHWEST CORNER  
OF ABUTMENT B-027-3, RIVERSIDE HWY.  
BRIDGE # 56-419 47.0 FEET SOUTH  
WEST OF THE E OF TYLER ST.  
ELEV. 756.665 (70)

*Howard A. Cremon*  
APPROVED BY WATER DIV.  
DATE: 3-19-73

F. F. LA BELLE  
18954 PERRIS BLVD.  
PERRIS, CALIFORNIA  
*F. F. La Belle*  
F. F. LA BELLE RCE. 9239

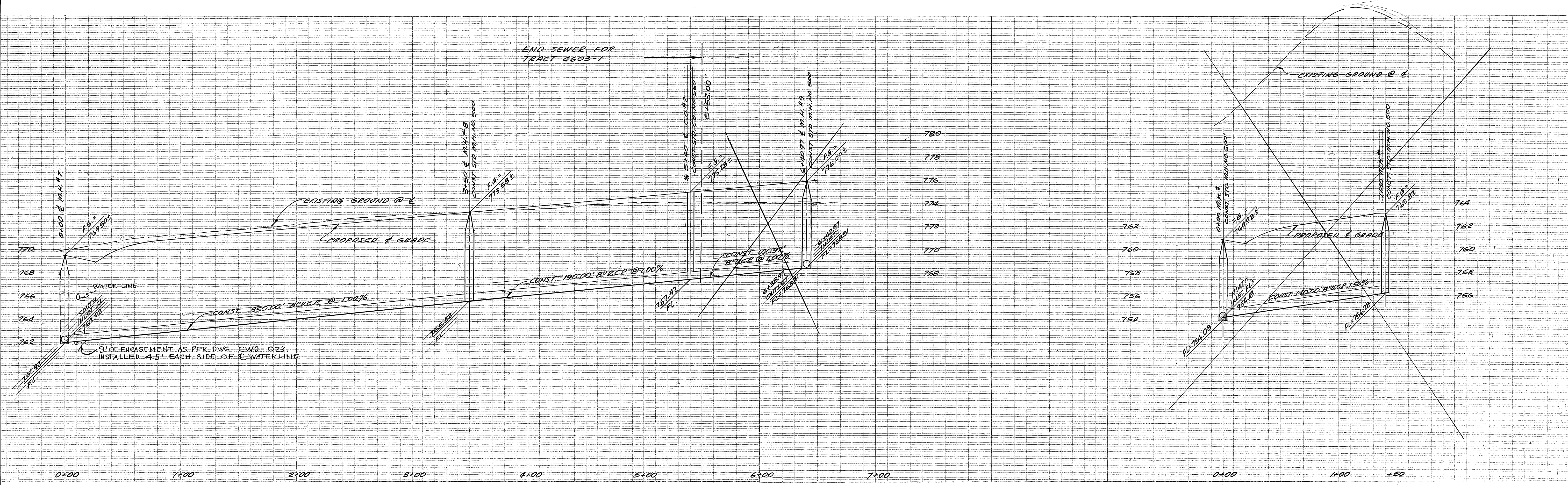
MARK	REVISIONS	APPR. DATE

CITY OF RIVERSIDE, CALIFORNIA  
DEPARTMENT OF PUBLIC WORKS  
APPROVED BY: *[Signature]*  
DATE: 3/21/73  
OFFICE ENGINEER: *[Signature]*  
DATE: 3/21/73  
TRAFFIC DIV.  
ASST. CITY ENG. *[Signature]*  
DATE: 3/22/73

SEWER PLAN & PROFILE IN  
COMANCHE AVENUE  
TRACT 4603-1  
HORIZ. SCALE: 1" = 40'  
VERT. SCALE: 1" = 4'

PROJECT NO.  
S-931  
SHEET 2 OF 4  
FILE NO.



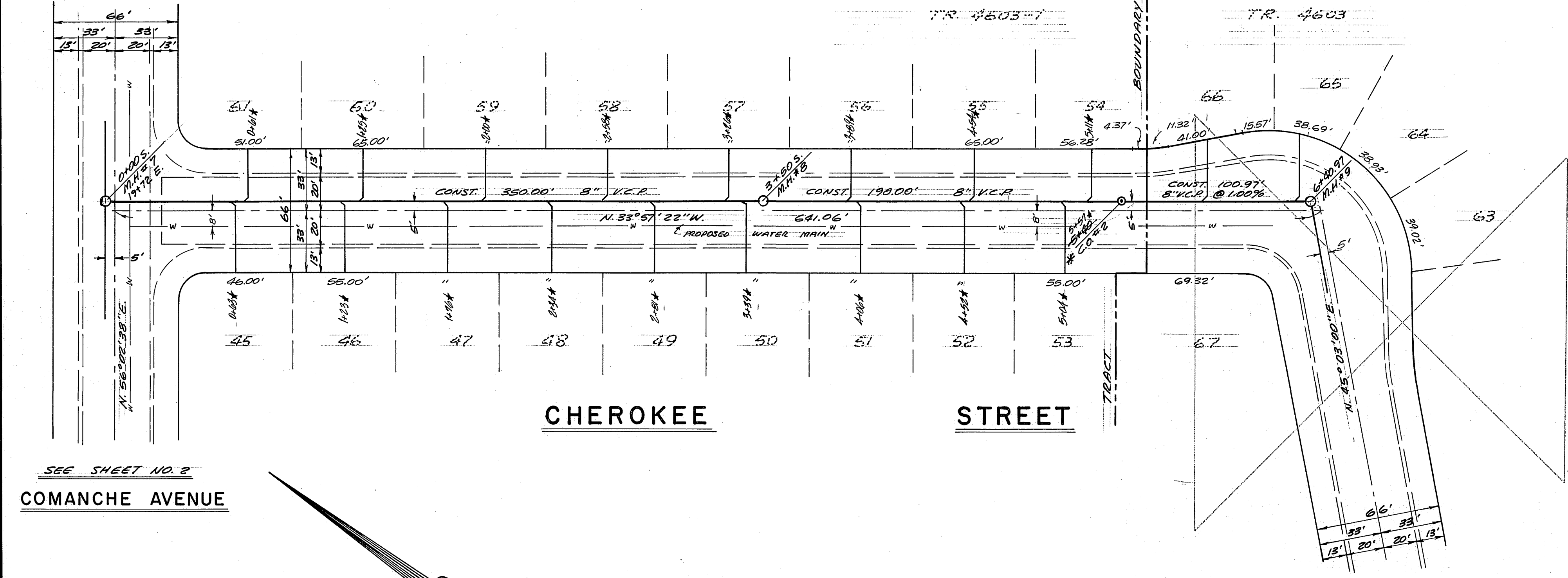


SEE SHEET No. 1 FOR CONSTRUCTION NOTES:

\* NOTE: CONSTRUCT A STD. CLEAN-OUT NO. 560 TO BE REMOVED WHEN TRACT 4603 IS CONSTRUCTED

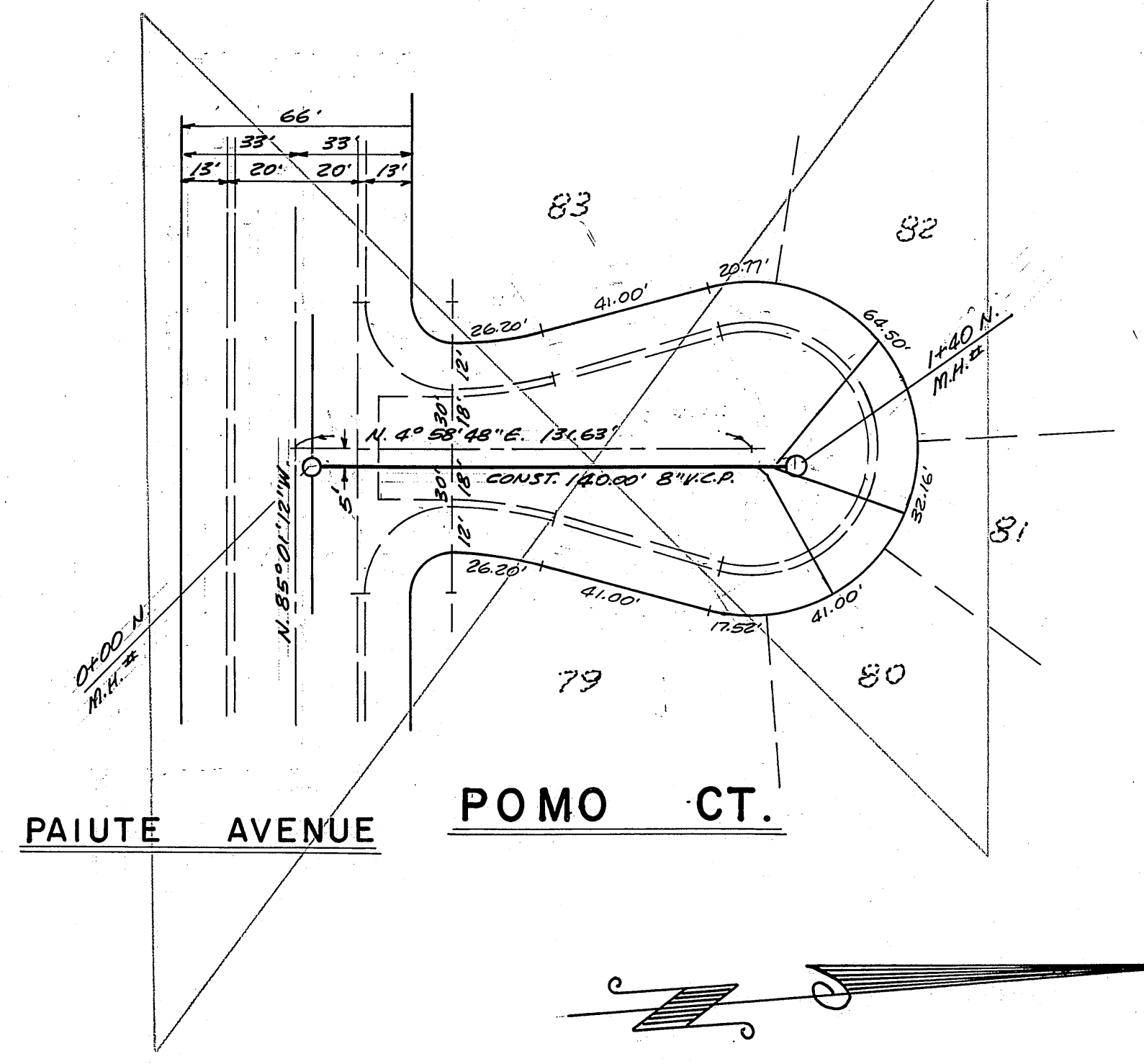
PROFILE SCALE:  
HORIZ: 1" = 40'  
VERT: 1" = 4'

SEE SHEET NO. 2



SEE SHEET NO. 2  
COMANCHE AVENUE

IROQUOIS AVENUE



PAIUTE AVENUE

POMO CT.

PLAN SCALE  
SCALE = 1" = 40' # 601-25-68

BENCH MARK:  
BRONZE DISK IN CONCRETE POST 1.0 FOOT NORTHEAST OF THE NORTHWEST CORNER OF ABUTMENT B-027-3, RIVERSIDE FWY. BRIDGE #56-819 470 FEET SOUTHWEST OF THE E OF TYLER ST. ELEV. 756.665 (70)

*Howard A. Orman*  
APPROVED BY WATER DIV.  
DATE: 3-19-73

F. F. LA BELLE  
18954 PERRIS BLVD.  
PERRIS, CALIFORNIA  
*F. F. La Belle*  
F. F. LA BELLE R.C.E. 9239

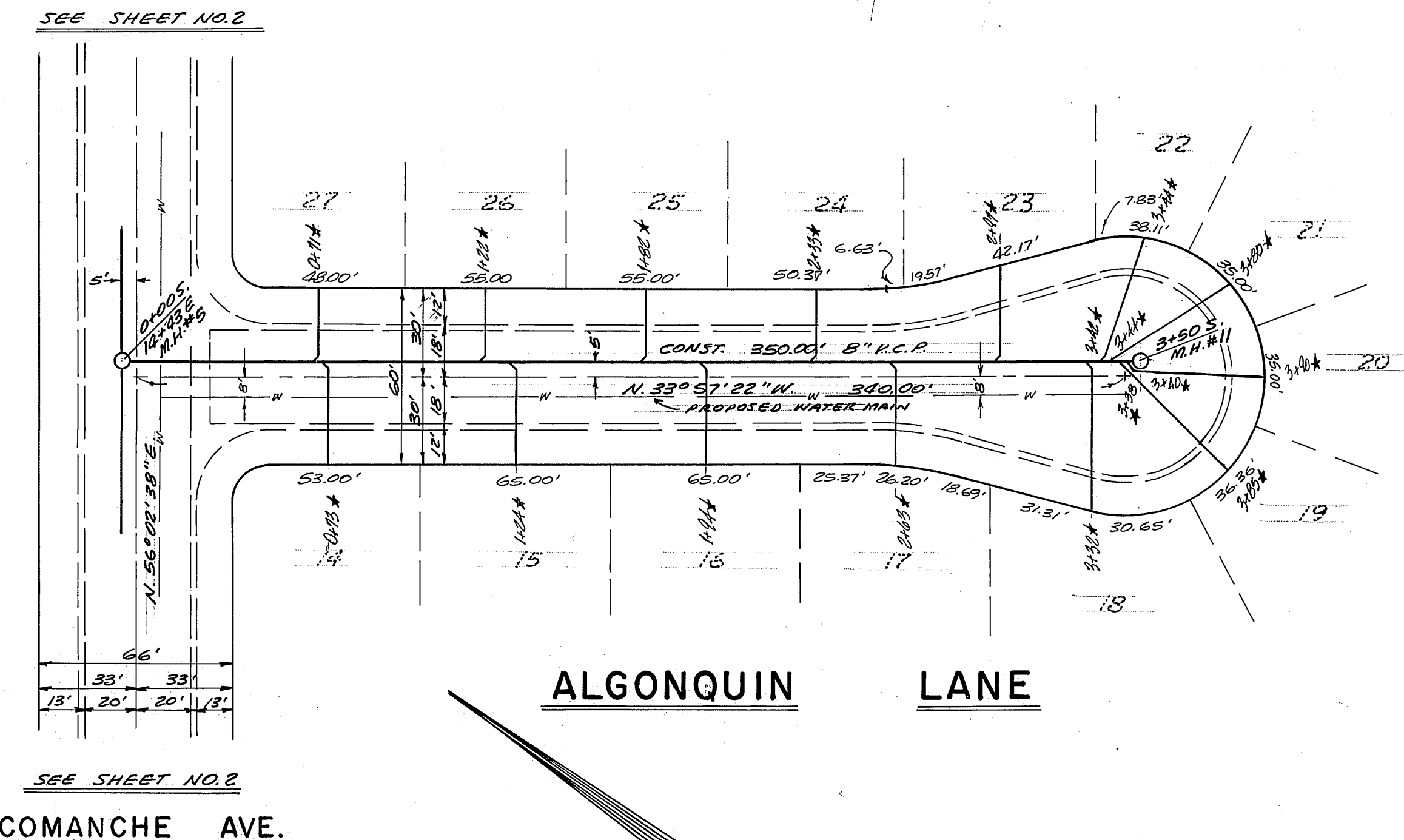
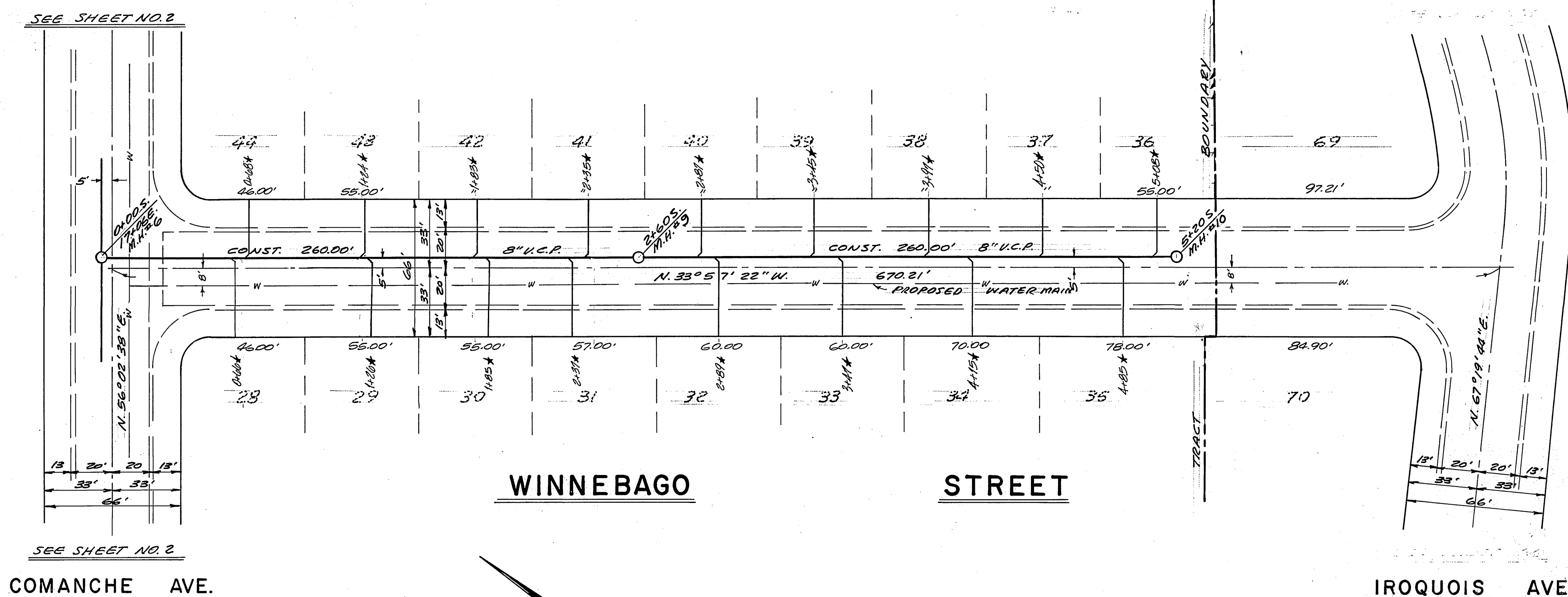
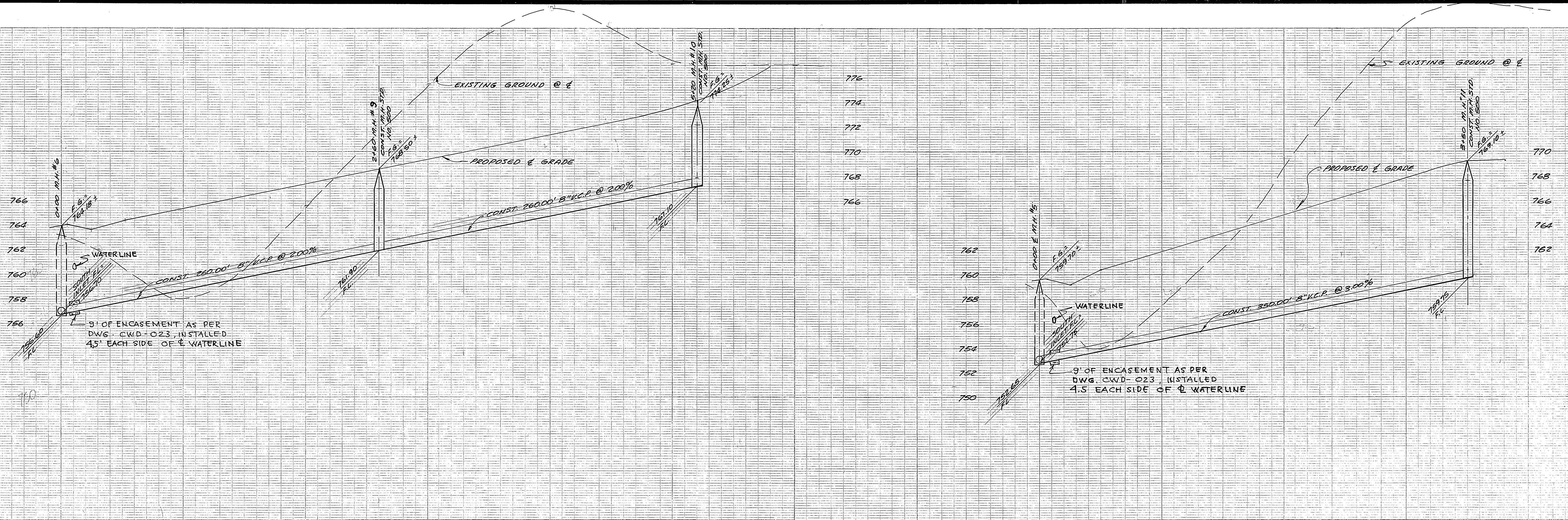
MARK	REVISIONS	APPR. DATE

CITY OF RIVERSIDE, CALIFORNIA  
DEPARTMENT OF PUBLIC WORKS  
APPROVED BY: *[Signature]* BY DATE: 3/21  
OFFICE ENGINEER: *[Signature]* PARK DEPT.  
TRAFFIC DIV.  
ASST. CITY ENG. DATE: 3/16/73

SEWER PLAN & PROFILE IN  
CHEROKEE STREET  
POMO COURT  
TRACT 4603-1  
HORIZ. SCALE: 1" = 40' VERT. SCALE: 1" = 4'

PROJECT NO.  
S-931  
SHEET 3 OF 4  
FILE NO.





BENCH MARK # 601-25-68  
 BRONZE DISK IN CONCRETE POST 1.0 FOOT NORTHWEST OF THE NORTHWEST CORNER OF LOT 13-027-3, RIVERSIDE Fwy. BRIDGE # 66-49 47.0 FEET SOUTHWEST OF THE  $\phi$  OF TYLER ST.  
 ELEV. 766.665 (70)

APPROVED BY WATER DIV.  
 DATE: 3-19-73

F.F. LA BELLE  
 18954 PERRIS BLVD.  
 PERRIS, CALIFORNIA

DESIGNED BY	D.J.B.	DRAWN BY	R.G.S.	CHECKED BY	J.D.W.
REVISIONS		APPR. DATE			

CITY OF RIVERSIDE, CALIFORNIA  
 DEPARTMENT OF PUBLIC WORKS

APPROVED BY  
 OFFICE ENGINEER  
 PARK DEPT.  
 TRAFFIC DIV.  
 ASST. CITY ENG.

BY DATE  
 3/21/73  
 3/22/73

APPROVED BY  
 DIRECTOR OF PUBLIC WORKS  
 3/24/73

PROJECT NO. S-931  
 SHEET 4 OF 4  
 HORIZ. SCALE: 1" = 40'  
 VERT. SCALE: 1" = 4'  
 FILE NO.