

**QUANTITY ESTIMATE**

2" V.C.P. \_\_\_\_\_

8" V.C.P. \_\_\_\_\_

8" X 4" WYES OR TEES \_\_\_\_\_

MANHOLES \_\_\_\_\_

CLEAN-OUTS \_\_\_\_\_

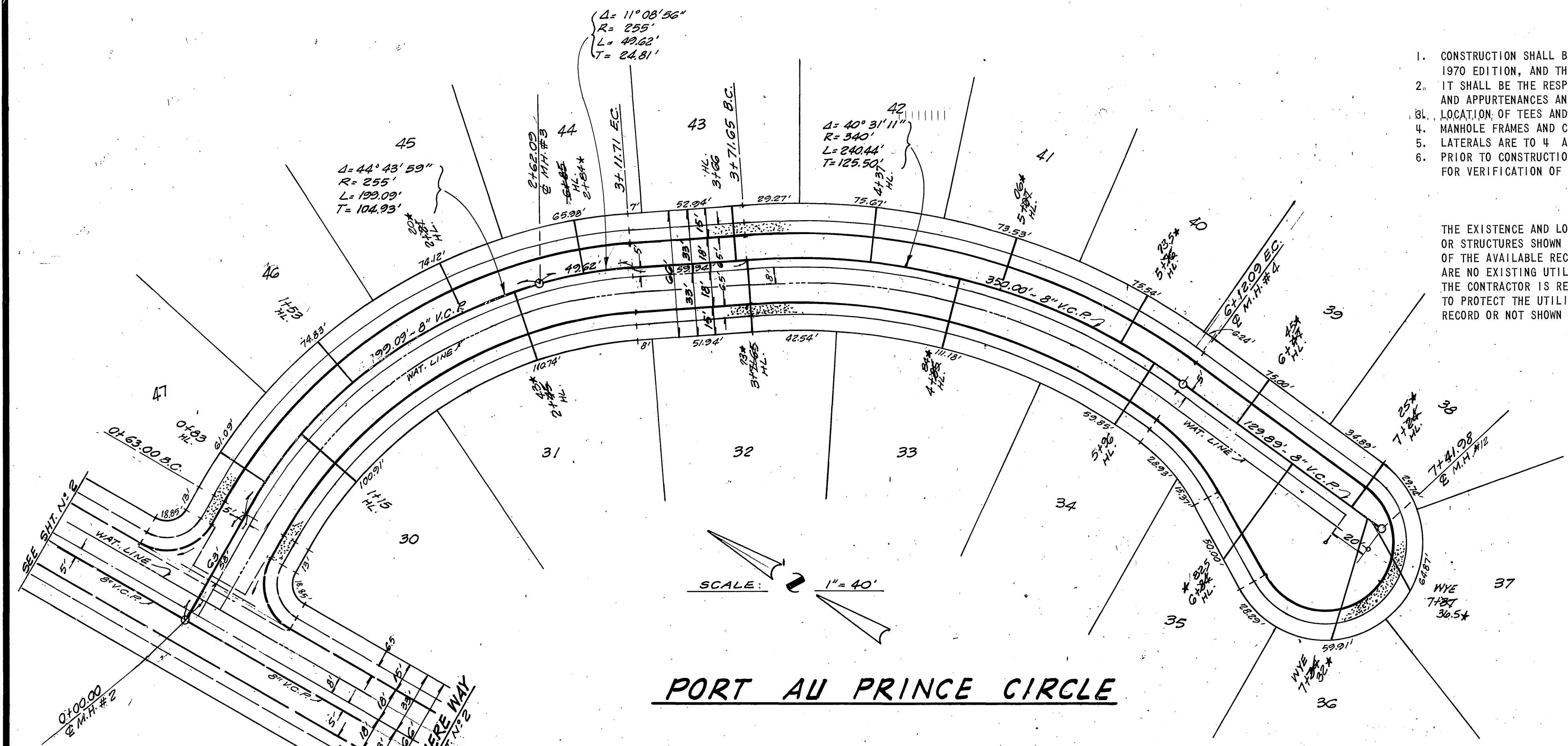
**NOTE:**  
THE CITY HAS NOT CHECKED THIS QUANTITY ESTIMATE AND APPROVAL OF THESE PLANS DOES NOT CONFIRM THE ACCURACY OF THE ESTIMATE.

- GENERAL NOTES**
- CONSTRUCTION SHALL BE IN ACCORDANCE WITH STANDARD SPECIFICATION FOR PUBLIC WORKS CONSTRUCTION, 1970 EDITION, AND THE CITY OF RIVERSIDE STANDARD DRAWINGS.
  - IT SHALL BE THE RESPONSIBILITY OF THE CONTRACTOR TO CLEAR THE RIGHT OF WAY IN IRRIGATION LINES AND APPURTENANCES AND AT NO COST TO THE CITY.
  - LOCATION OF TEES AND LATERALS TO BE DETERMINED AT THE DIRECTION OF THE OWNER.
  - MANHOLE FRAMES AND COVERS TO BE SET TO PROPOSED PAVEMENT GRADES.
  - LATERALS ARE TO 4" AND EXTENDED TO PROPERTY LINE.
  - PRIOR TO CONSTRUCTION OF SEWER, CONTRACTOR IS TO EXPOSE EXISTING SEWER AND CONTACT ENGINEER FOR VERIFICATION OF EXISTING ELEVATIONS.

**BENCH MARK**  
CHISELED IN N. END NW. CURB  
RETURN RANSON RD. & SHAKER  
(PER TRACT 2776)  
ELEV. = 1225.08

**NOTICE TO CONTRACTOR**

THE EXISTENCE AND LOCATION OF ANY UNDERGROUND UTILITY PIPES OR STRUCTURES SHOWN ON THESE PLANS ARE OBTAINED BY A SEARCH OF THE AVAILABLE RECORDS. TO THE BEST OF OUR KNOWLEDGE, THERE ARE NO EXISTING UTILITIES, EXCEPT AS SHOWN ON THESE PLANS. THE CONTRACTOR IS REQUIRED TO TAKE DUE PRECAUTIONARY MEASURES TO PROTECT THE UTILITY LINES SHOWN AND ANY OTHER LINES NOT OF RECORD OR NOT SHOWN ON THESE PLANS.



**PORT AU PRINCE CIRCLE**

SCALE: 1" = 40'

★ "AS BUILT" 2005-07-3

APPROVED BY:  
*[Signature]*  
CHIEF PUBLIC UTILITIES ENGINEER - WATER DATE

APPROVED BY:  
*[Signature]*  
JACK MAHONEY R.C.E. 14329 DATE 3-29-73

CITY OF RIVERSIDE, CALIFORNIA DEPARTMENT OF PUBLIC WORKS	
APPROVED BY	DATE
OFFICE ENGINEER	3/29/73
PARK DEPARTMENT	
TRAFFIC DIVISION	
ASSISTANT CITY ENGINEER	4/23
DESIGNED BY	DRAWN BY
CHECKED BY	

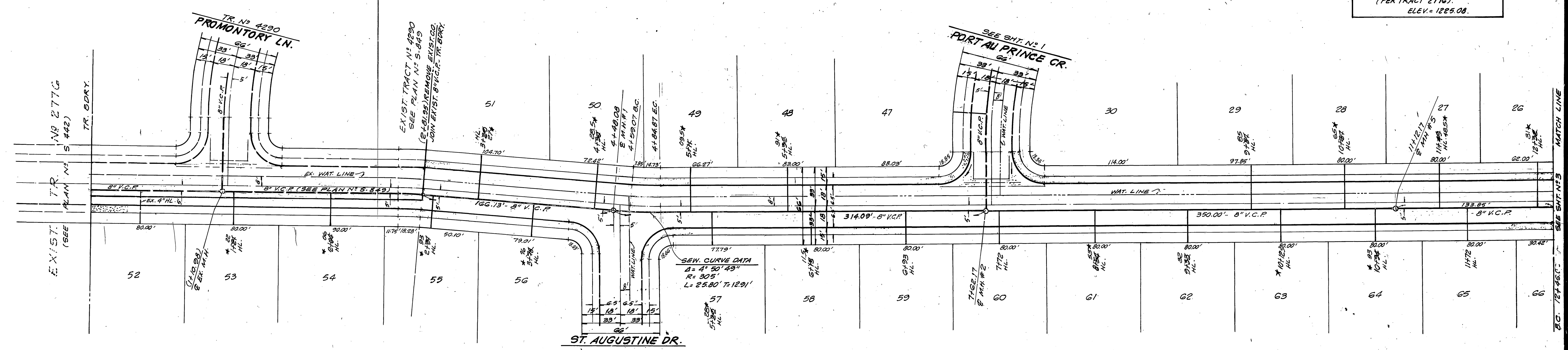
SEWER PLAN & PROFILE	PROJECT NO.
PORT AU PRINCE CIRCLE FROM WINDEMERE WAY TO 710' S. ELY.	S-933
TRACT NO 4111	SHEET 1 OF 6
HORIZ. SCALE: 1" = 40'	VERT. SCALE: 1" = 8'
FILE NO.	



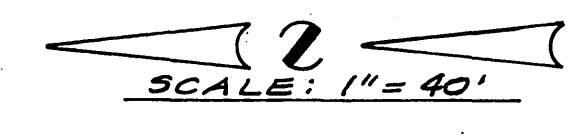
1230  
1220  
1210

0 1 2 3 4 5 6 7 8 9 10 11 12

**BENCH MARK**  
CHISELED IN N. END NW CURB  
RETURN RANSON RD. & SHAKER  
(PER TRACT 2776).  
ELEV. = 1225.00.



WINDEMERE WAY



APPROVED BY:  
*Howard L. Cream* 4-9-73  
CHIEF PUBLIC UTILITIES ENGINEER - WATER DATE

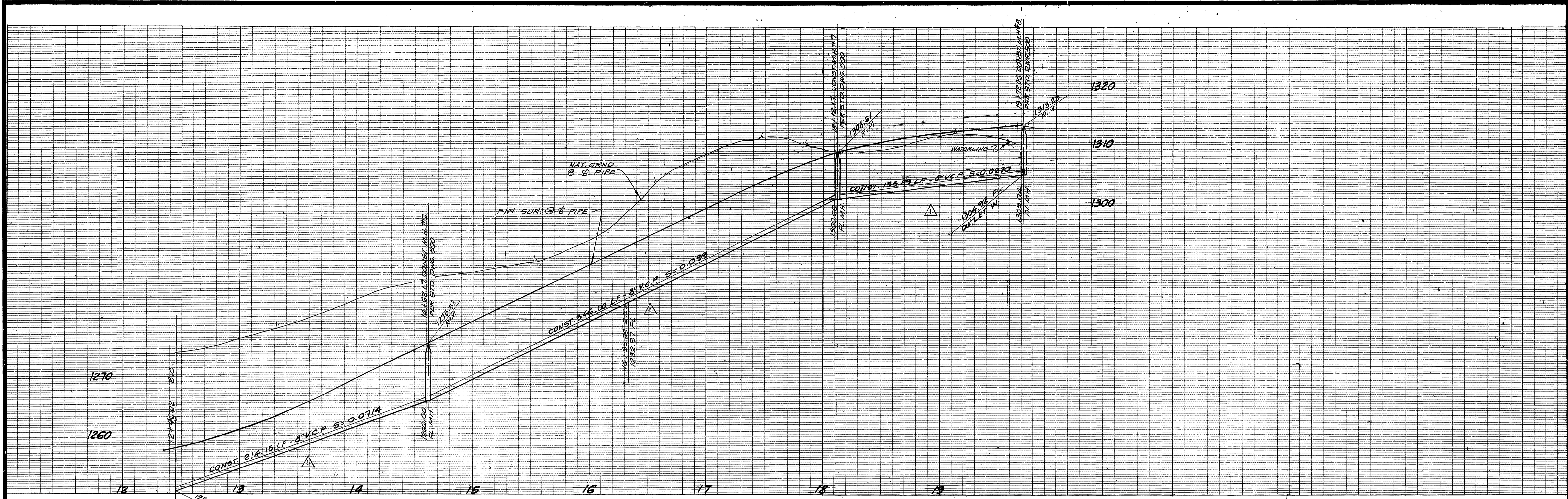
**VCM**  
ENGINEERS ARCHITECTS PLANNERS 200 CAMPUS DRIVE, RIVERSIDE, CALIFORNIA 92504 (714) 938-2800  
APPROVED BY:  
*Jack Mahoney* 3-29-73  
JACK MAHONEY REG. 14325 DATE

MARK	REVISIONS	APPR.	DATE
△	LOWERED SEWER GRADES BECAUSE OF SEWAGE STREET GRADES		3-14-73

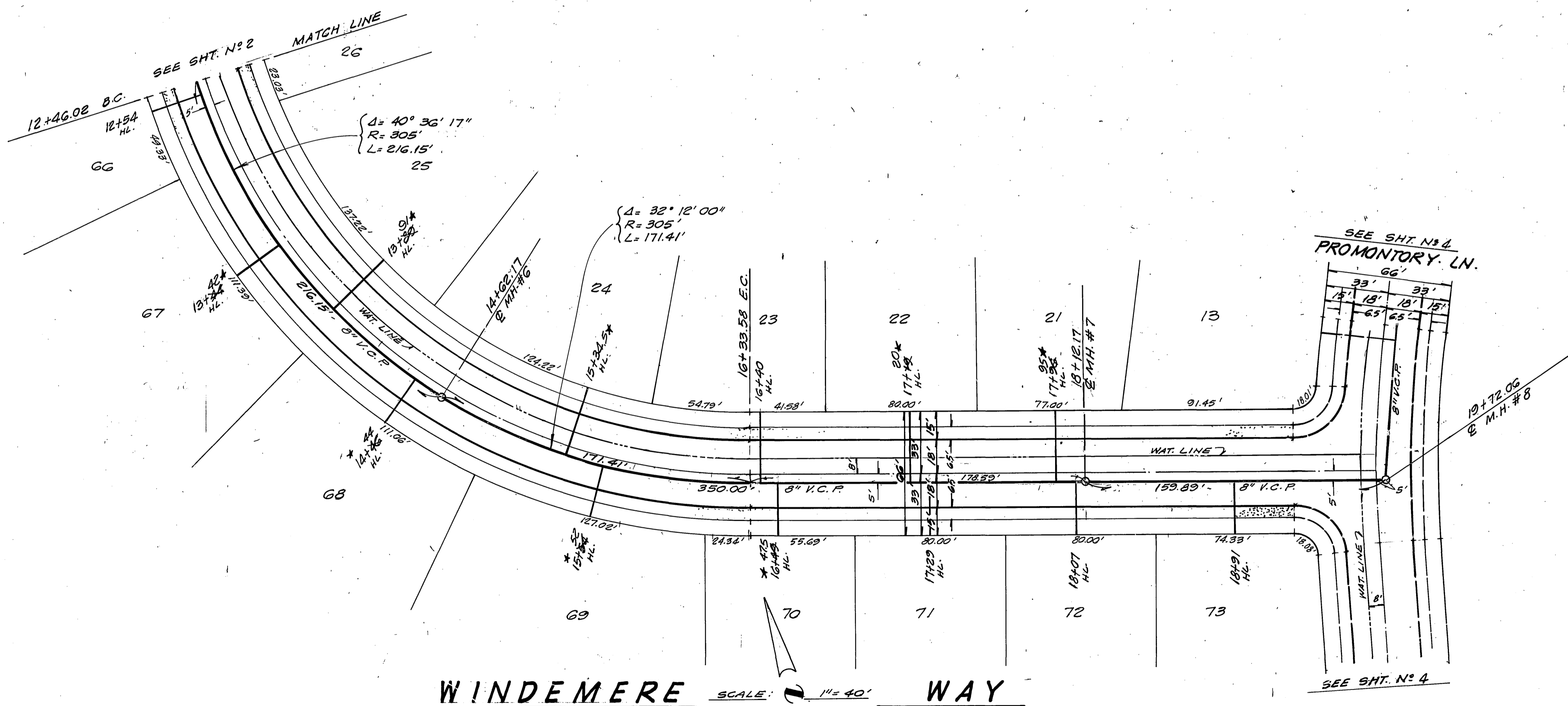
CITY OF RIVERSIDE, CALIFORNIA  
DEPARTMENT OF PUBLIC WORKS  
APPROVED BY: *Jack Mahoney*  
OFFICE ENGINEER  
PARK DEPARTMENT  
TRAFFIC DIVISION  
ASSISTANT CITY ENGINEER  
DATE: 4-24-73

<b>SEWER PLAN &amp; PROFILE</b>		PROJECT NO.
<b>WINDEMERE WAY</b>		S-933
FROM 115' NLY. OF PROMONTORY TO 8130' SLY.		SHEET 2 OF 6
<b>TRACT NO. 4111</b>		FILE NO.
HORIZ. SCALE: 1" = 40'	VERT. SCALE: 1" = 8'	





**BENCH MARK**  
 CHISELED IN N. END N.W. CURB  
 RETURN RANSON RD. & SHAKER  
 (PER TRACT 276)  
 ELEV. = 1225.08



**WINDEMERE WAY** SCALE: 1" = 40'

**VTA**  
 ARCHITECTS PLANNERS 201 CAMPUS DRIVE, RIVERSIDE, CALIFORNIA 92508  
 APPROVED BY  
 Jack Mahoney 3-29-73  
 JACK MAHONEY R.C.E. 14385 DATE

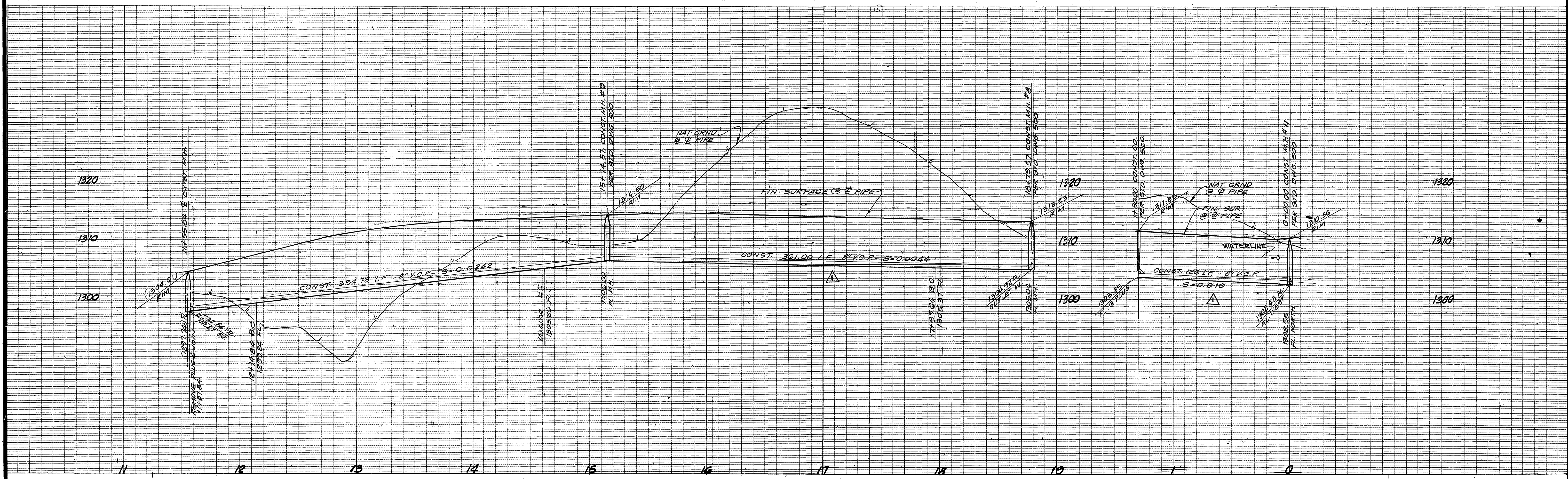
DESIGNED BY	DRAWN BY	CHECKED BY

APPROVED BY:  
 Howard A. Dorman 4-9-73  
 CHIEF PUBLIC UTILITIES ENGINEER - WATER DATE

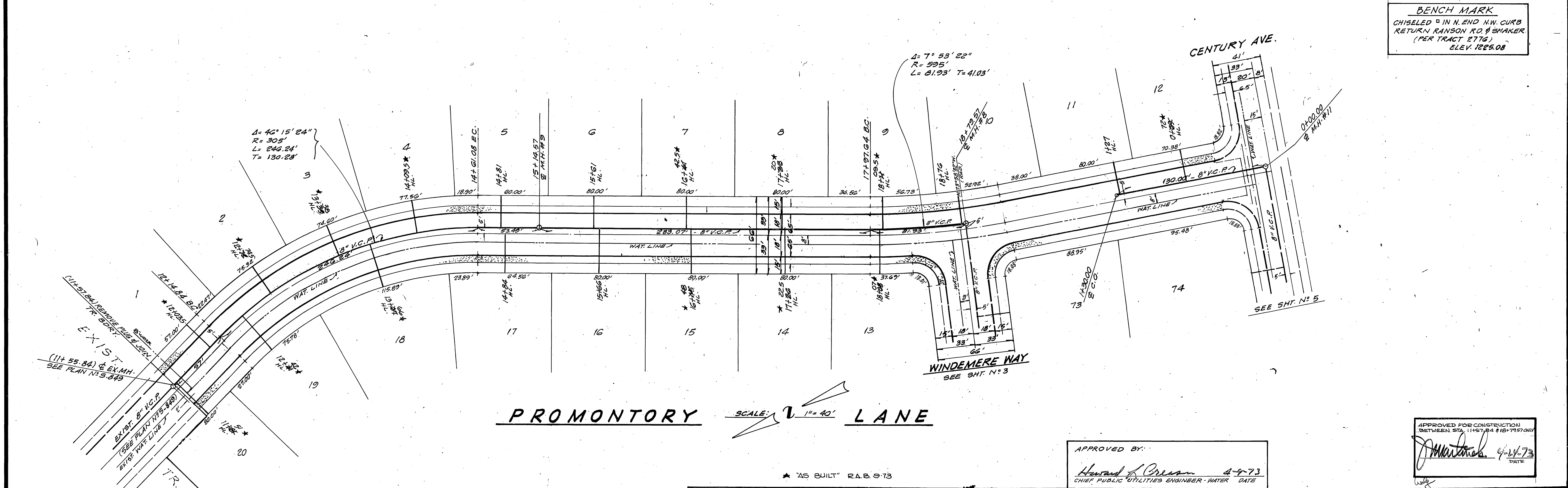
CITY OF RIVERSIDE, CALIFORNIA DEPARTMENT OF PUBLIC WORKS	
OFFICE ENGINEER	BY DATE
PARK DEPARTMENT	APR 9/76
TRAFFIC DIVISION	
ASSISTANT CITY ENG.	DATE 4-24-73

<b>SEWER PLAN &amp; PROFILE</b>	PROJECT NO.
<b>WINDEMERE WAY</b>	<b>5-933</b>
FROM 2130'S ELY. OF PROMONTORY LN. TO 2845'S ELY.	
<b>TRACT NO 4111</b>	SHEET 3 OF 6
HORIZ. SCALE: 1" = 40'	VERT. SCALE: 1" = 8'
FILE NO.	





**BENCH MARK**  
 CHISELED IN N. END N.W. CURB  
 RETURN RANSON RD. W. SHAKER  
 (PER TRACT 2776)  
 ELEV. 1265.08



**PROMONTORY LANE** SCALE: 1" = 40'

\* AS BUILT R.A.B. 9-73

APPROVED BY:  
*Harold A. Crean* 4-9-73  
 CHIEF PUBLIC UTILITIES ENGINEER - WATER DATE

APPROVED FOR CONSTRUCTION  
 BETWEEN STA. 11+57.84 & 18+75.70 ONLY  
*[Signature]* 4-14-73  
 DATE

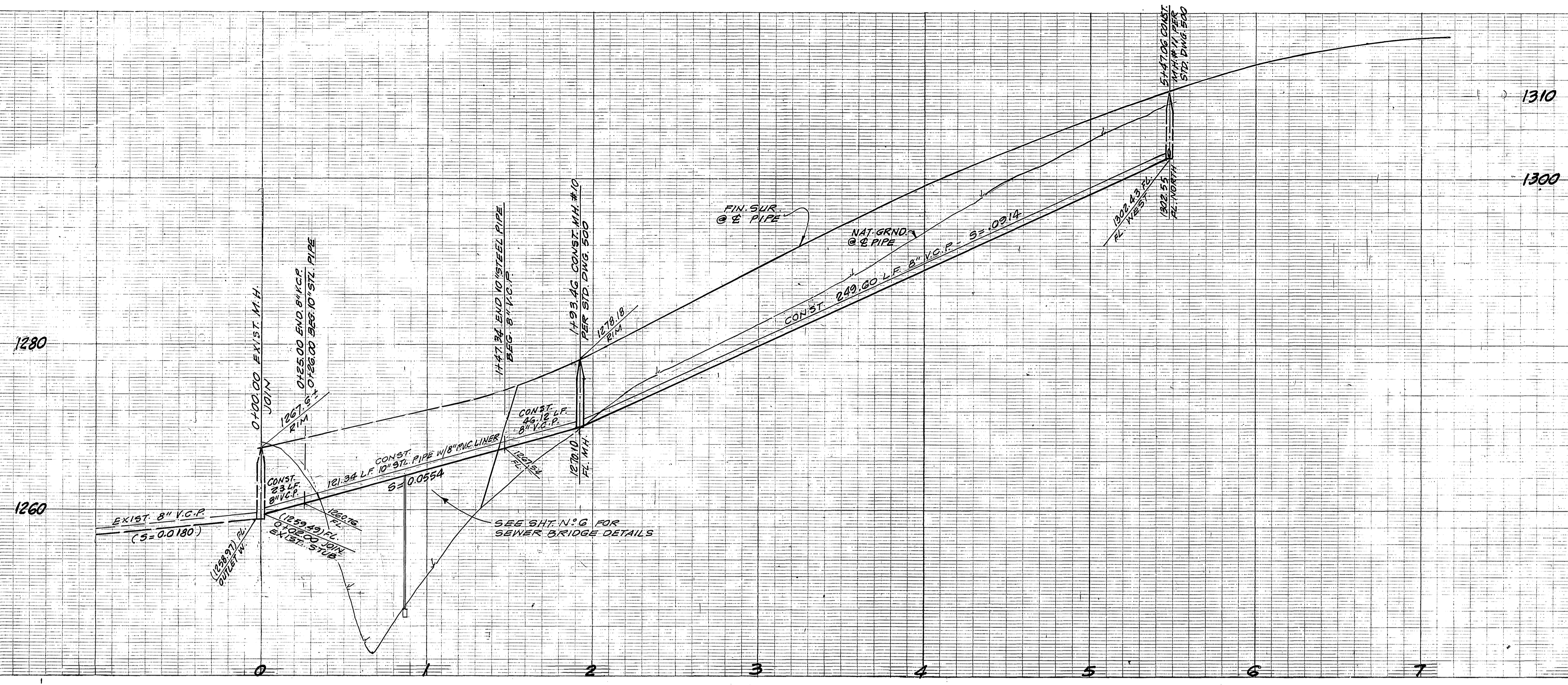
**vtm**  
 ENGINEERS ARCHITECTS PLANNERS 3301 CAMPUS DRIVE, IRVINE, CALIFORNIA 92614 833-3400  
 APPROVED BY:  
*Jack Mahoney* 3-28-73  
 JACK MAHONEY REG. 14329 DATE

MARK	REVISIONS	APPR. DATE
Δ	LOWERED SEWER GRADES	4/9/73

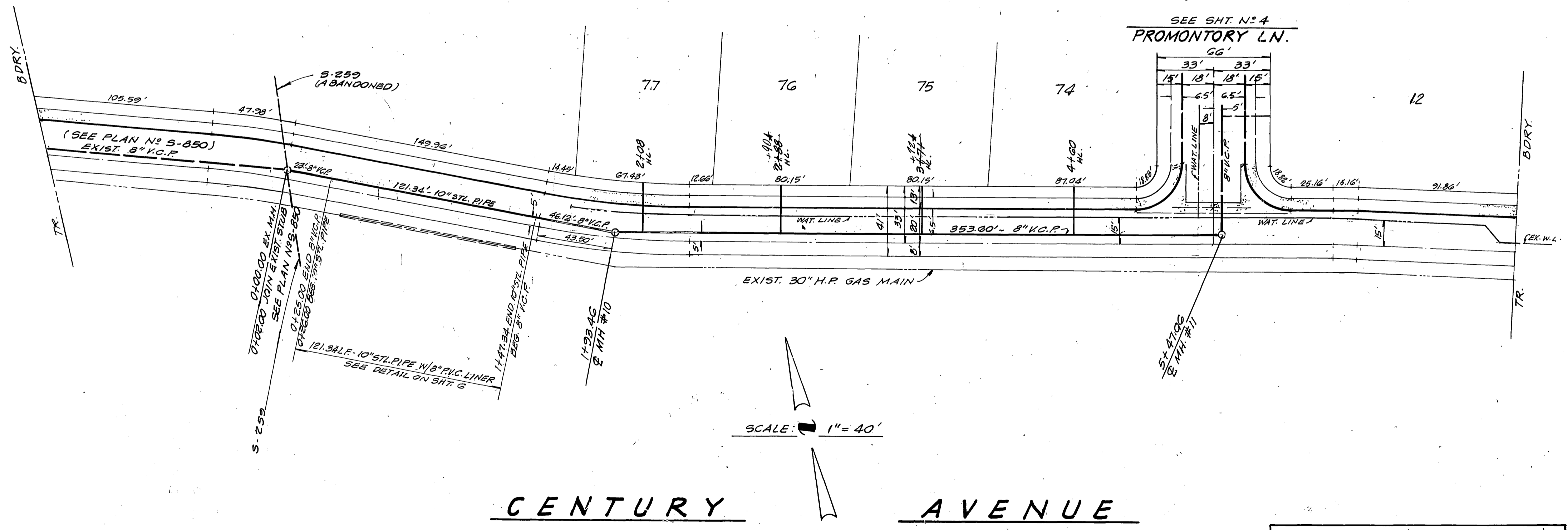
**CITY OF RIVERSIDE, CALIFORNIA**  
 DEPARTMENT OF PUBLIC WORKS  
 OFFICE ENGINEER: *[Signature]* 4/16/73  
 PARK DEPARTMENT  
 TRAFFIC DIVISION  
 ASSISTANT CITY ENGINEER: *[Signature]* 4-23  
 DATE: 6-18-73

SEWER PLAN & PROFILE	PROJECT NO.
<b>PROMONTORY LANE</b> FROM 1148' S. ELY. OF WINDEMERE TO 2133' S. L.Y.	S-933
<b>TRACT NO 4111</b>	SHEET 4 OF 6
HORIZ. SCALE: 1" = 40' VERT. SCALE: 1" = 8'	FILE NO.





**BENCH MARK**  
 CHISELED  $\square$  IN N. END N.W. CURB  
 RETURN RANSON RD. & SHAKER  
 (PER TRACT 277G)  
 ELEV. = 1225.08



SCALE 1" = 40'

**CENTURY AVENUE**

**VTI**  
 ENGINEERS ARCHITECTS PLANNERS 1201 CAMPUS DRIVE, IRVINE, CALIFORNIA 92614 (714) 833-2100  
 APPROVED BY:  
*Jack Mahoney*  
 JACK MAHONEY RCE 14925  
 DATE 3-29-73

MARK	REVISIONS	APPR. DATE

APPROVED BY:  
*Harold L. Creamer* 4-9-73  
 CHIEF PUBLIC UTILITIES ENGINEER - WATER DATE

CITY OF RIVERSIDE, CALIFORNIA  
 DEPARTMENT OF PUBLIC WORKS

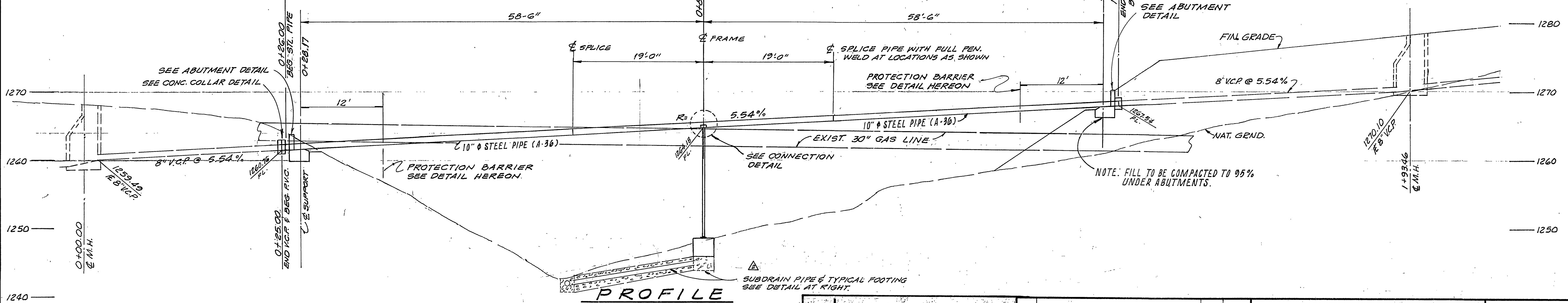
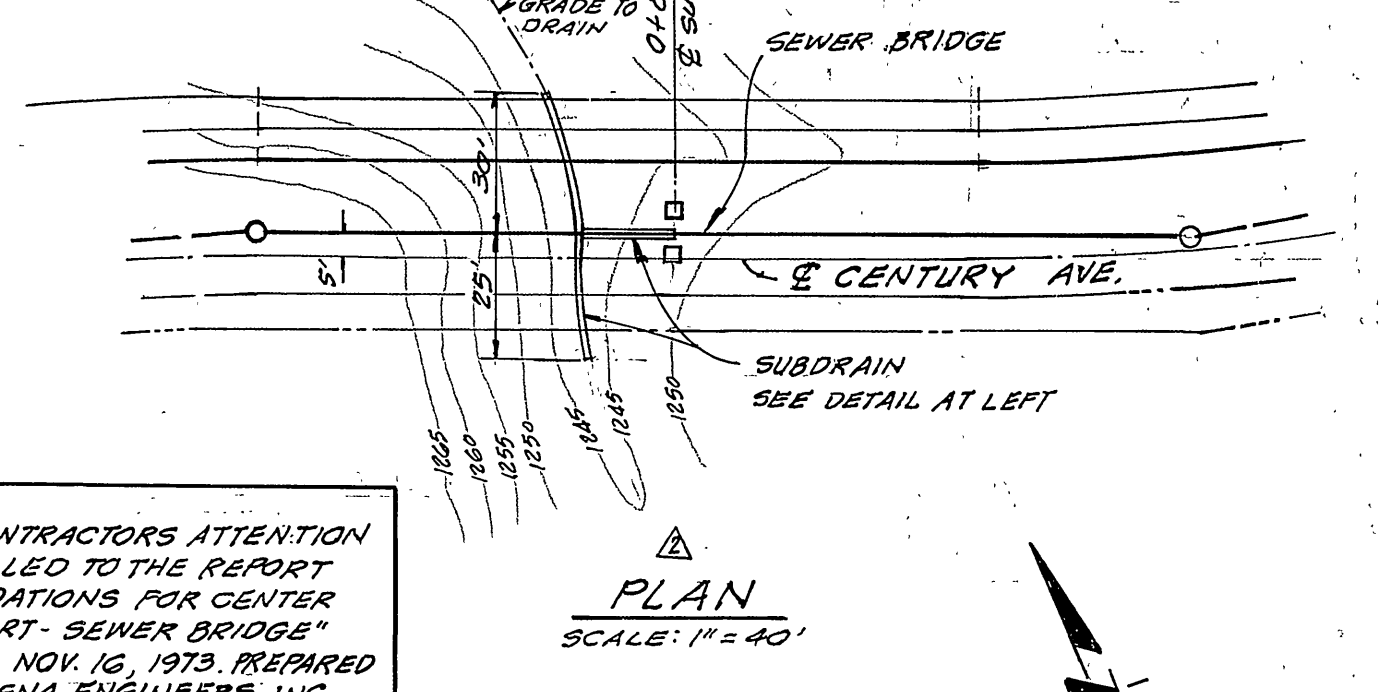
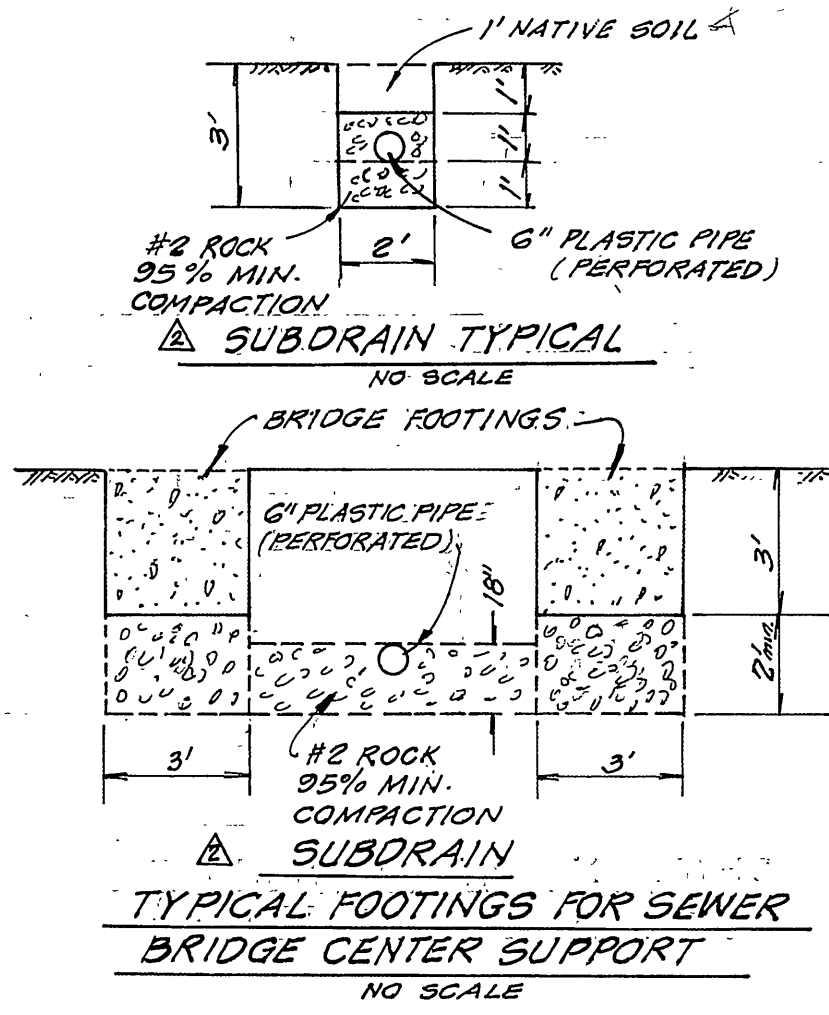
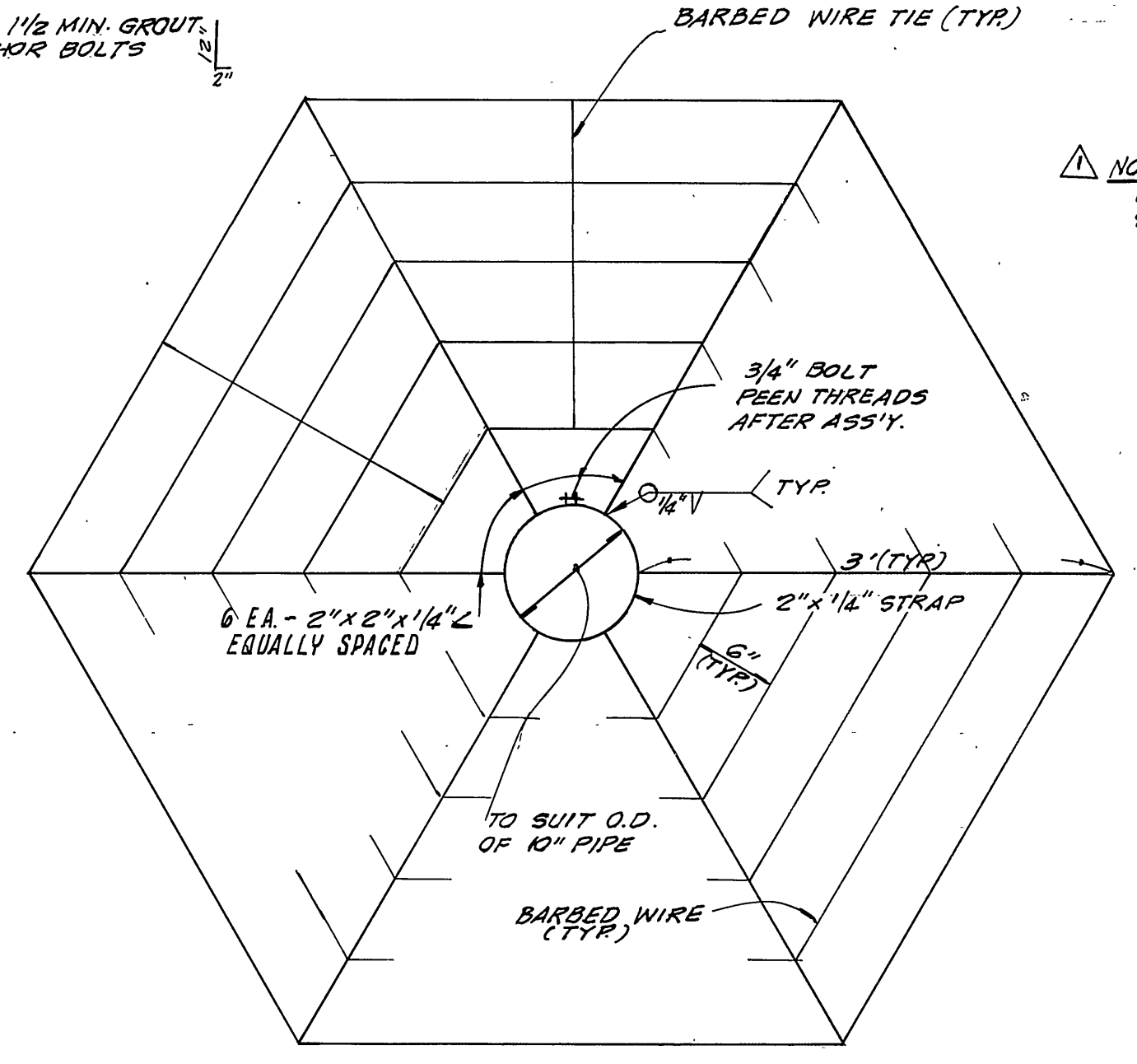
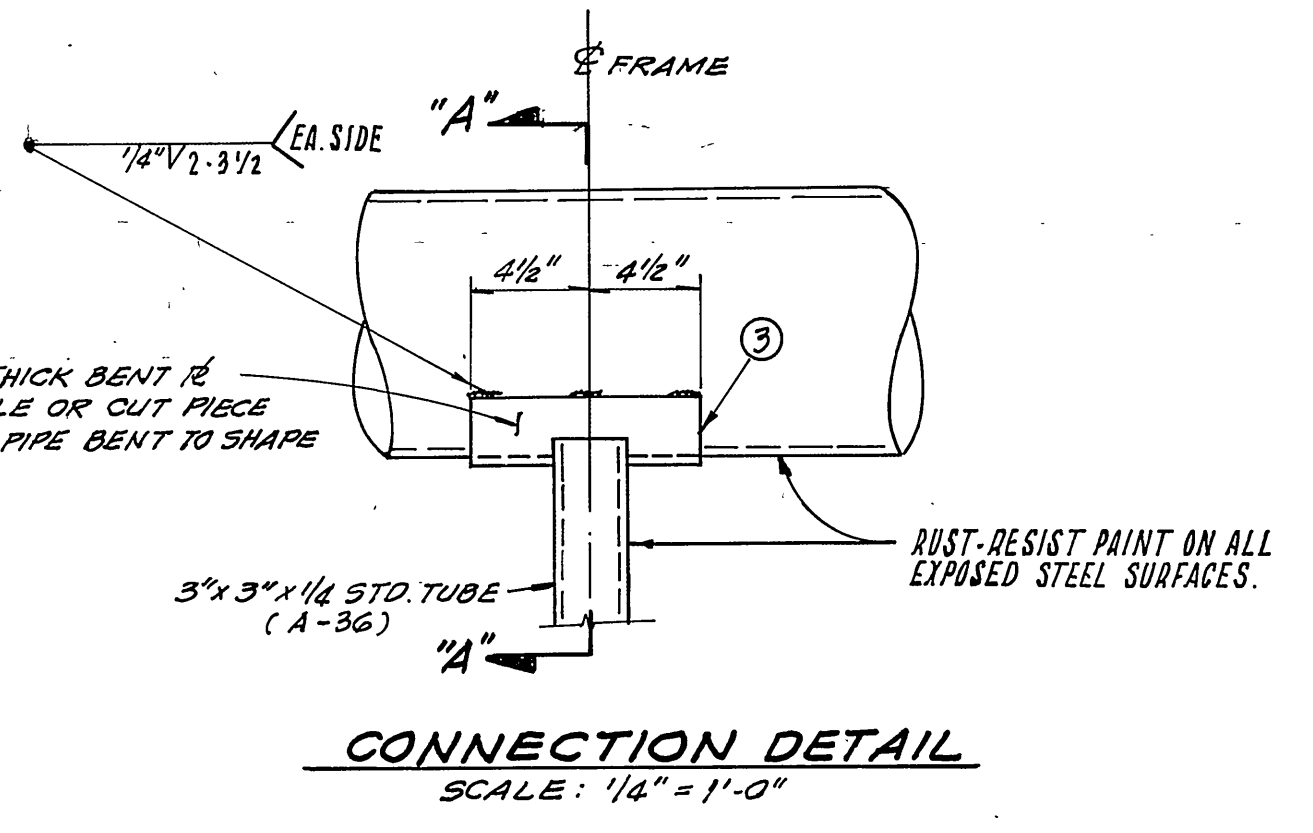
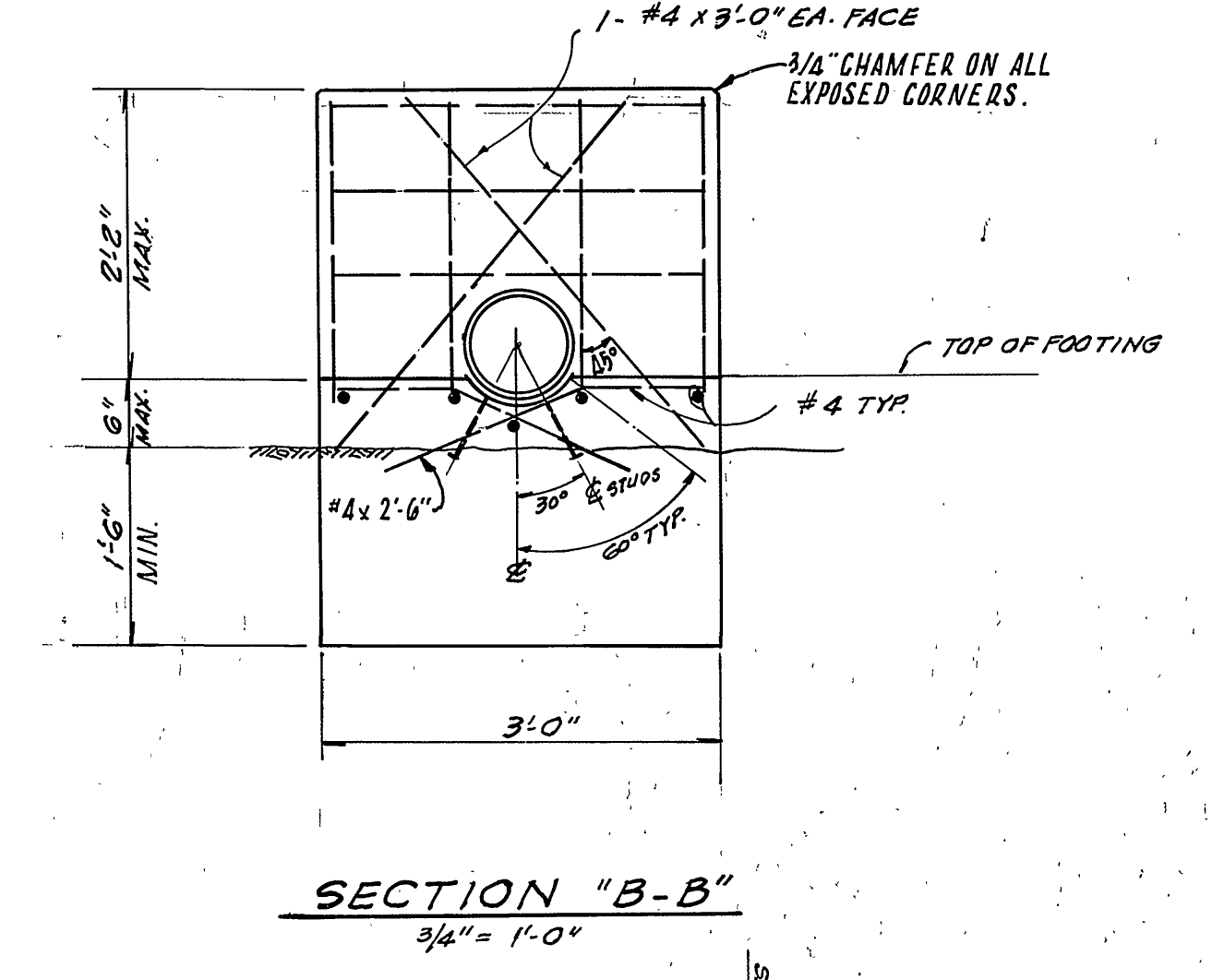
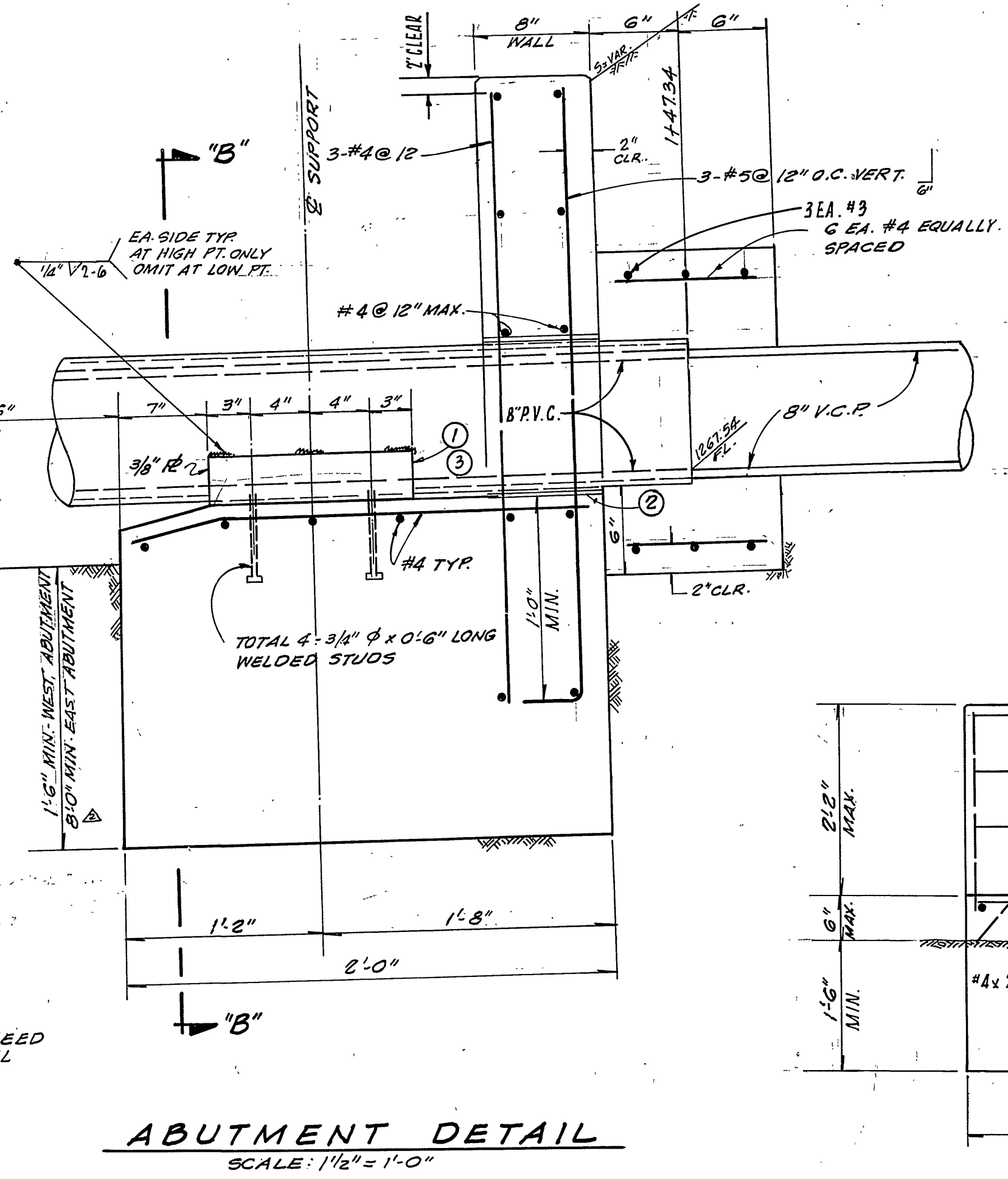
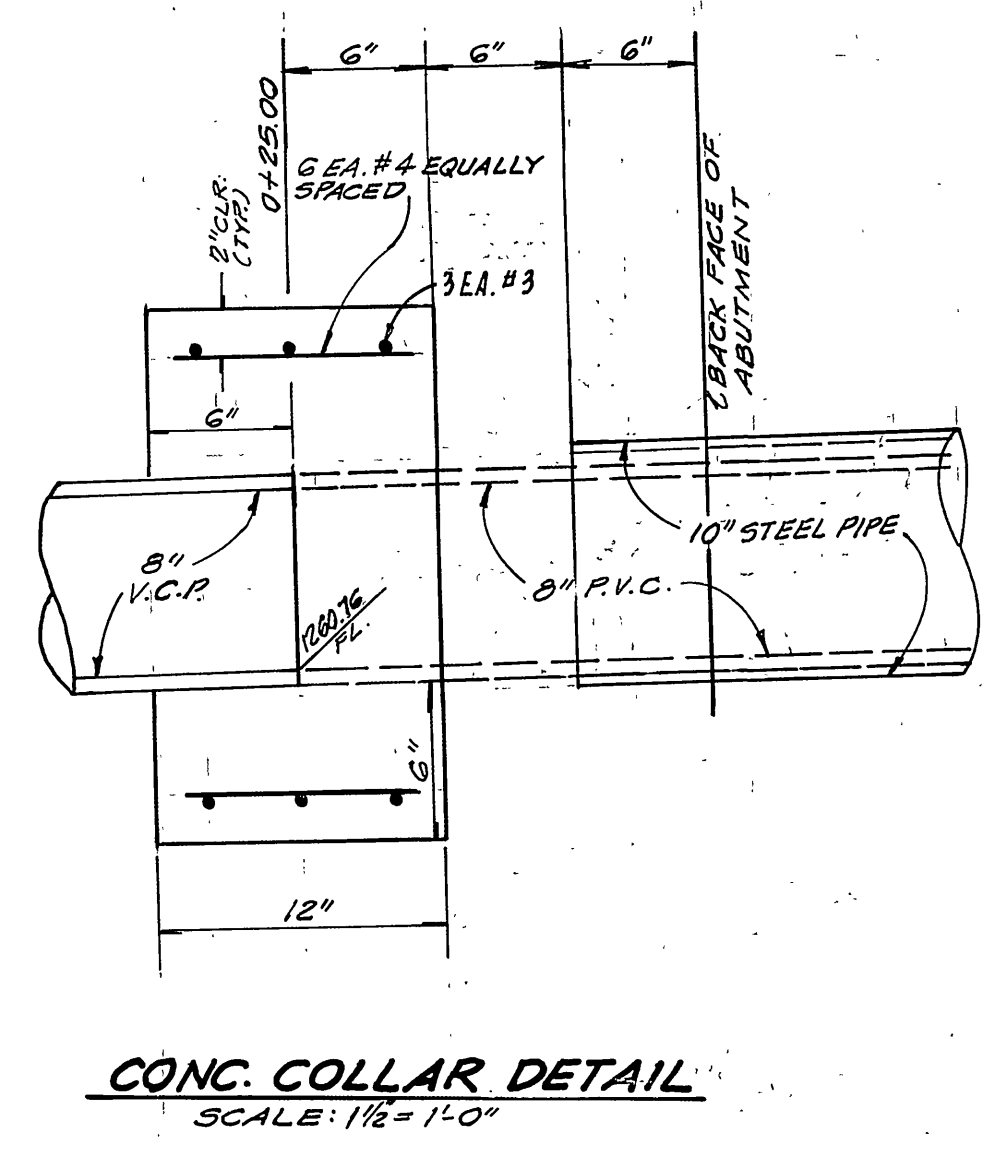
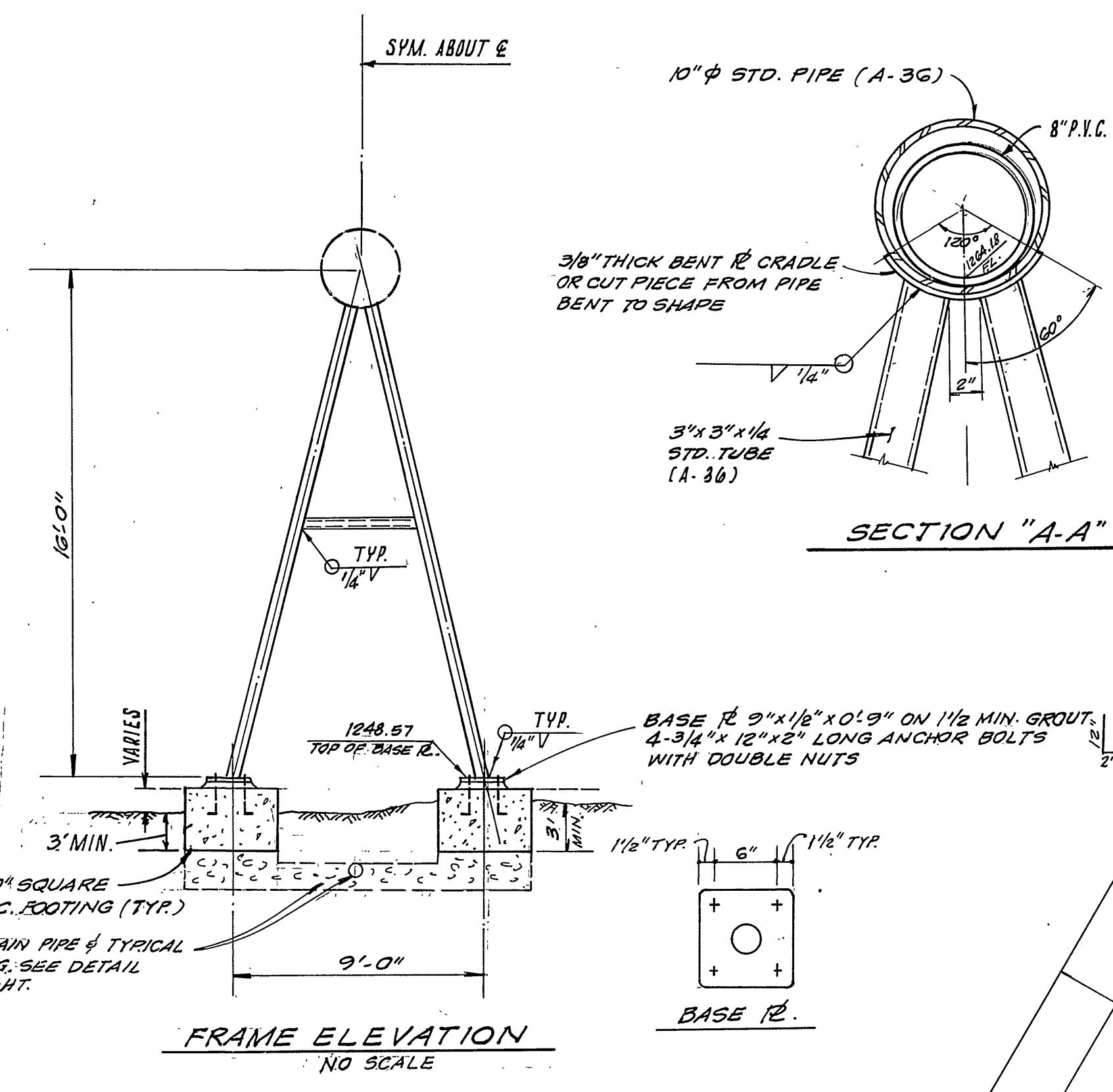
APPROVED BY: *William S. Heston*  
 DIRECTOR OF PUBLIC WORKS  
 DATE 6-15-73

**SEWER PLAN & PROFILE**  
**CENTURY AVENUE**  
 FROM 753' WLY. OF PROMONTORY LN. TO 176' ELY.  
**TRACT NO 4111**

PROJECT NO. **S-933**  
 SHEET **5** OF **6**  
 HORIZ. SCALE: 1" = 40' VERT. SCALE: 1" = 8' FILE NO.



- NOTES:**
1. OMIT WELD AT DOWN STREAM END AND PROVIDE GRAPHITE GREASE BETWEEN STD. PIPE & ALL SUPPORTING SURFACES.
  2. PROVIDE OVERSIZE (MIN. AS REQUIRED) PIPE SLEEVE.
  3. SADDLE RADIUS ABOUT 1% LARGER THAN THE PIPE O.D.



APPROVED BY: *[Signature]*  
CHIEF PUBLIC UTILITIES ENGINEER-WATER DATE: \_\_\_\_\_

<b>VTM</b> ENGINEERING, ARCHITECTURE, PLANNING AND CONSTRUCTION 1400 N. GARDEN ST. RIVERSIDE, CALIFORNIA 92507 (951) 514-3300		<b>CITY OF RIVERSIDE, CALIFORNIA</b> <b>DEPARTMENT OF PUBLIC WORKS</b>		<b>PROJECT NO.</b> <b>S-933</b>	
APPROVED BY: <i>[Signature]</i> JACK MAHONEY R.C.E. #325		APPROVED BY: <i>[Signature]</i> DIRECTOR OF PUBLIC WORKS		<b>SEWER BRIDGE DETAIL</b> <b>TRACT NO 4111</b>	
DATE: 3-24-73		DATE: 6/15/73		SHEET 6 OF 6	
DESIGNED BY	DRAWN BY	CHECKED BY	DATE	HORIZ. SCALE: 1" =	VERT. SCALE: 1" =