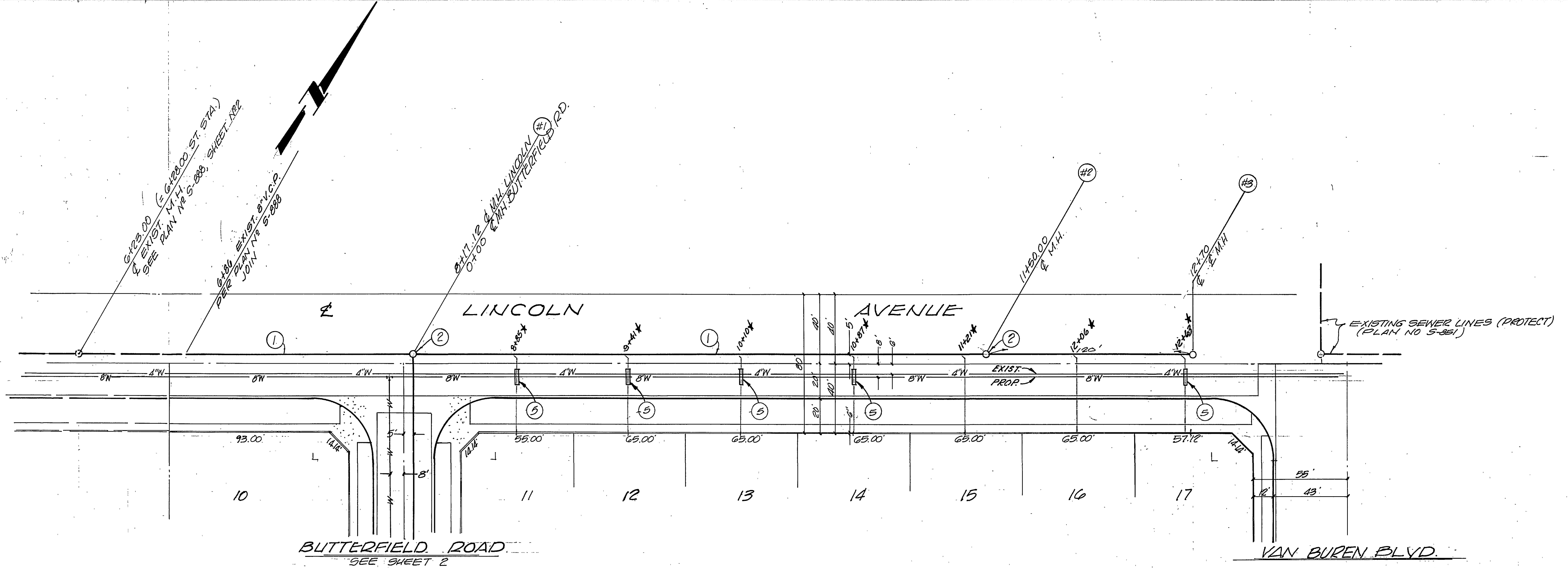


NOTES

1. ALL CONSTRUCTION SHALL BE IN ACCORDANCE WITH THE STANDARD SPECIFICATIONS FOR PUBLIC WORKS CONSTRUCTION 1970 EDITION AND STANDARD DRAWINGS OF THE CITY OF RIVERSIDE, DEPARTMENT OF PUBLIC WORKS.
2. LOCATION OF LATERALS TO BE LOCATED IN THE FIELD AT THE DIRECTION OF THE DEVELOPER, AVOID CONFLICT WITH PROPOSED AND/OR EXISTING FACILITIES.
3. ALL LATERALS TO BE 4" DIA. CONSTRUCTED TO THE PROPERTY LINE.
4. THE CONTRACTOR SHALL EXPOSE THE EXISTING SEWER STUB AND VERIFY THE ELEVATION OF SAME PRIOR TO BEGINNING CONSTRUCTION OF SEWER IMPROVEMENTS. ALL SEWER CONSTRUCTION SHALL BEGIN DOWNSTREAM AND CONTINUE UPSTREAM.
5. ENCASE SEWER WITH CONCRETE 4.5' MIN. EACH SIDE OF WATERLINE AS PER CWD-023 TYPE "C" ENCASUREMENT.

CONSTRUCTION NOTES

- 1 - CONST. 8" V.C.P. SEWER
- 2 - CONST. SEWER M.H. PER RIVERSIDE CITY STD. 500
- 3 - CONST. CLEANOUT TO GRADE PER RIVERSIDE STD. 560
- 4 - CONST. 8" V.C.P. STUB SOUTH TO TRACT BOUNDARY
- 5 - CONST. 4" V.C.P. SEWER LATERALS



BENCH MARK
EAB: BENCH MARK, STAMPED (EAB), CAPED
3-INTERSECTION OF VAN BUREN BLVD &
VICTORIA AVE. ELEV. 58.80

PRIVATE ENGINEER'S NOTICE TO CONTRACTOR

THE CONTRACTOR IS REQUIRED TO TAKE DUE PRECAUTIONARY MEASURES TO PROTECT THE UTILITY LINES SHOWN AND ALL OTHER LINES NOT OF RECORD AND/OR NOT SHOWN ON THESE PLANS AND SHALL BE RESPONSIBLE FOR ANY DAMAGE THERE TO.

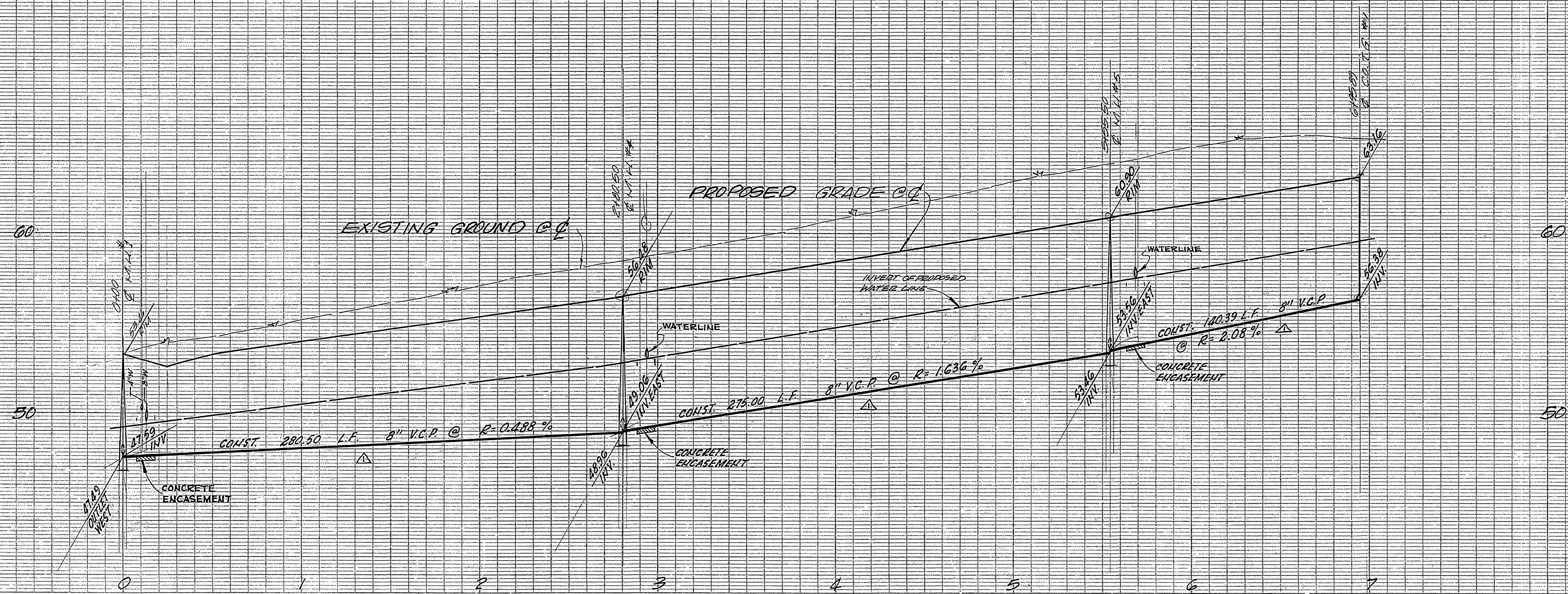
APPROVED BY:	DATE:
<i>[Signature]</i>	4-7-73
CHIEF PUBLIC UTILITIES ENG.	DATE:

PLANS PREPARED UNDER THE SUPERVISION OF
Don M. Lander 12/5/72
DON M. LANDER, R.C.E. 12795 DATE
LANDER ENGINEERING
4120 BLEACH ST., STE 109
NEENHURST BEACH, CALIF.

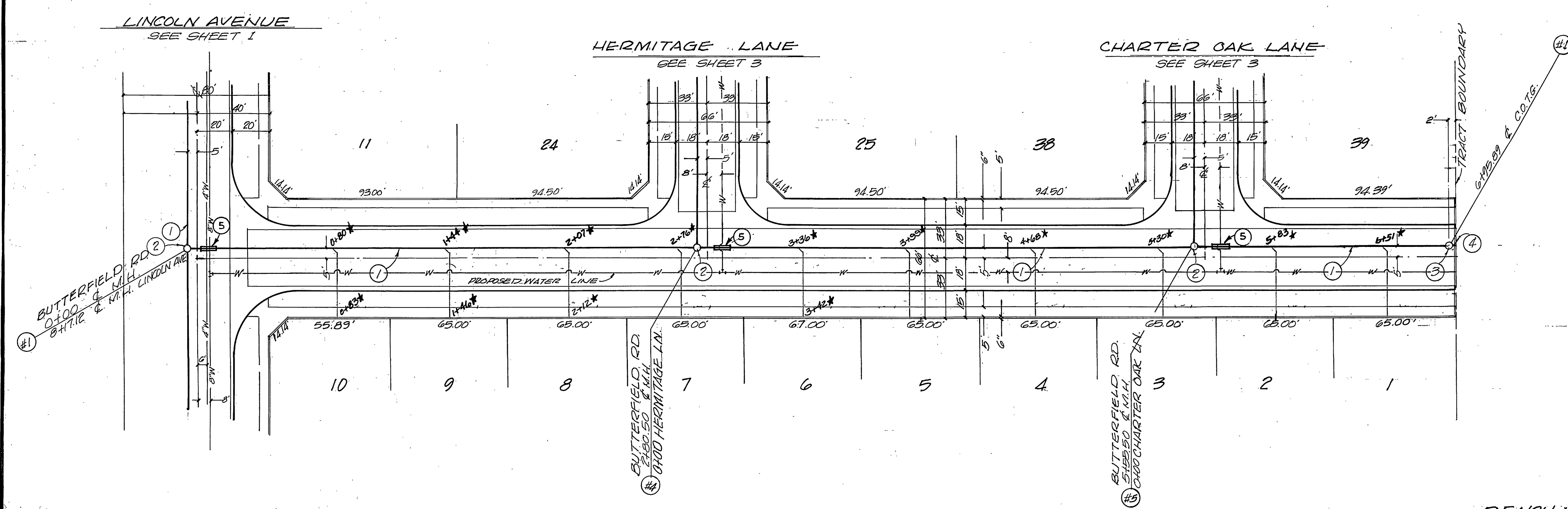
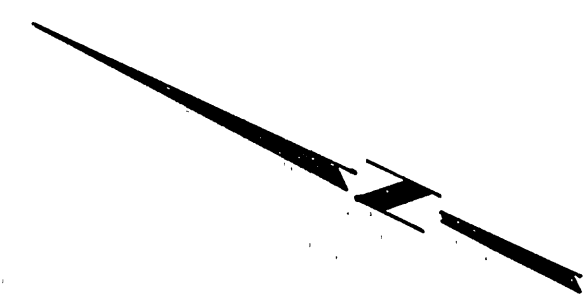
DESIGNED BY	DRINKWATER	CHECKED BY	WILLIAMS
APPROVED BY		DATE	4/11/73

CITY OF RIVERSIDE, CALIFORNIA
DEPARTMENT OF PUBLIC WORKS
APPROVED BY: *[Signature]*
DATE: 4/11/73

SEWER PLAN & PROFILE	PROJECT NO.
TRACT 4864 LINCOLN AVENUE	5-034
HORIZ. SCALE: 1" = 40'	VERT. SCALE: 1" = 4'
SHEET 1 OF 3	FILE NO.



NOTES
1. SEE SHEET NO. 1 FOR CONST. NOTES, ETC.
GENERAL NOTES



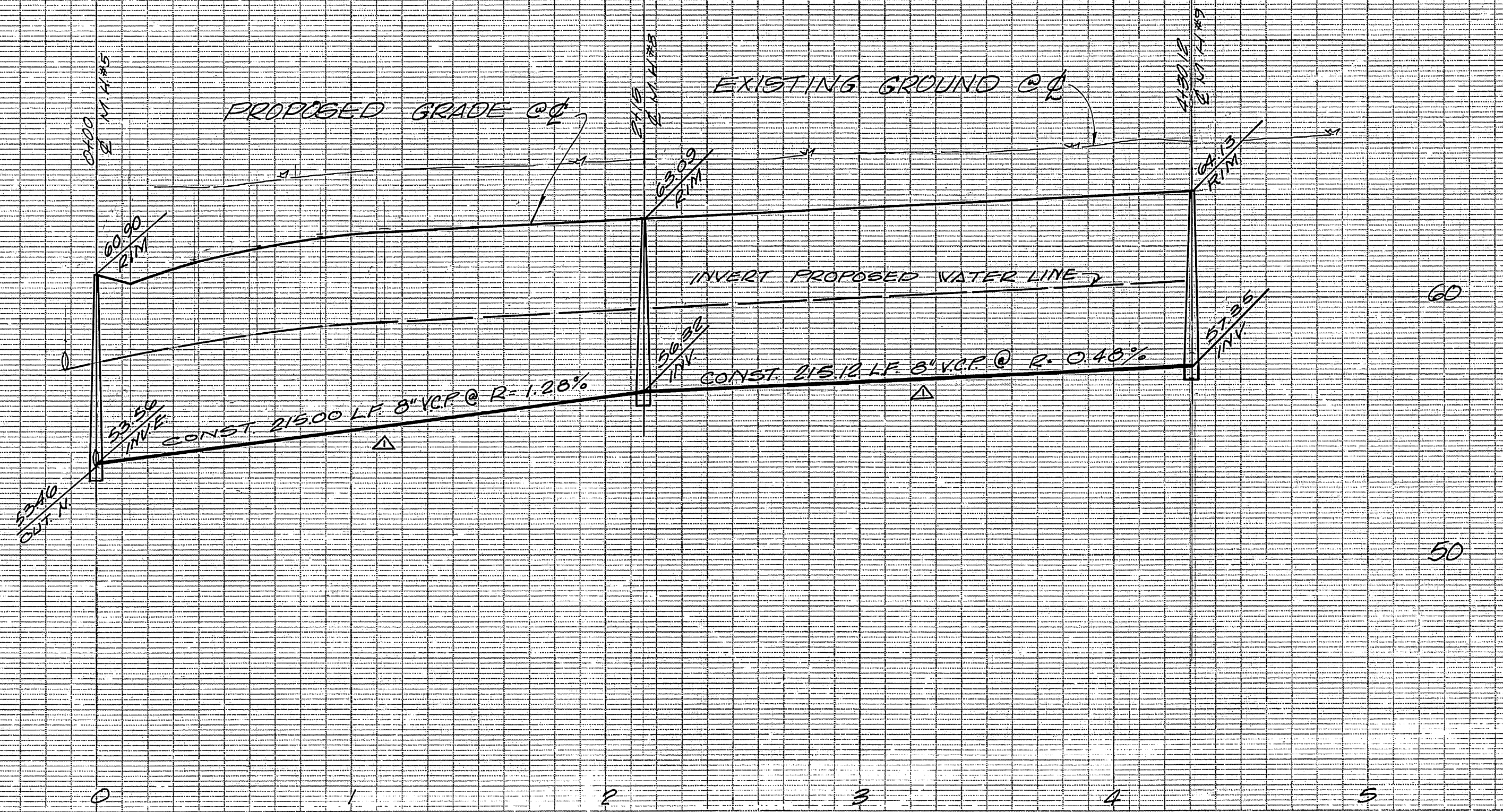
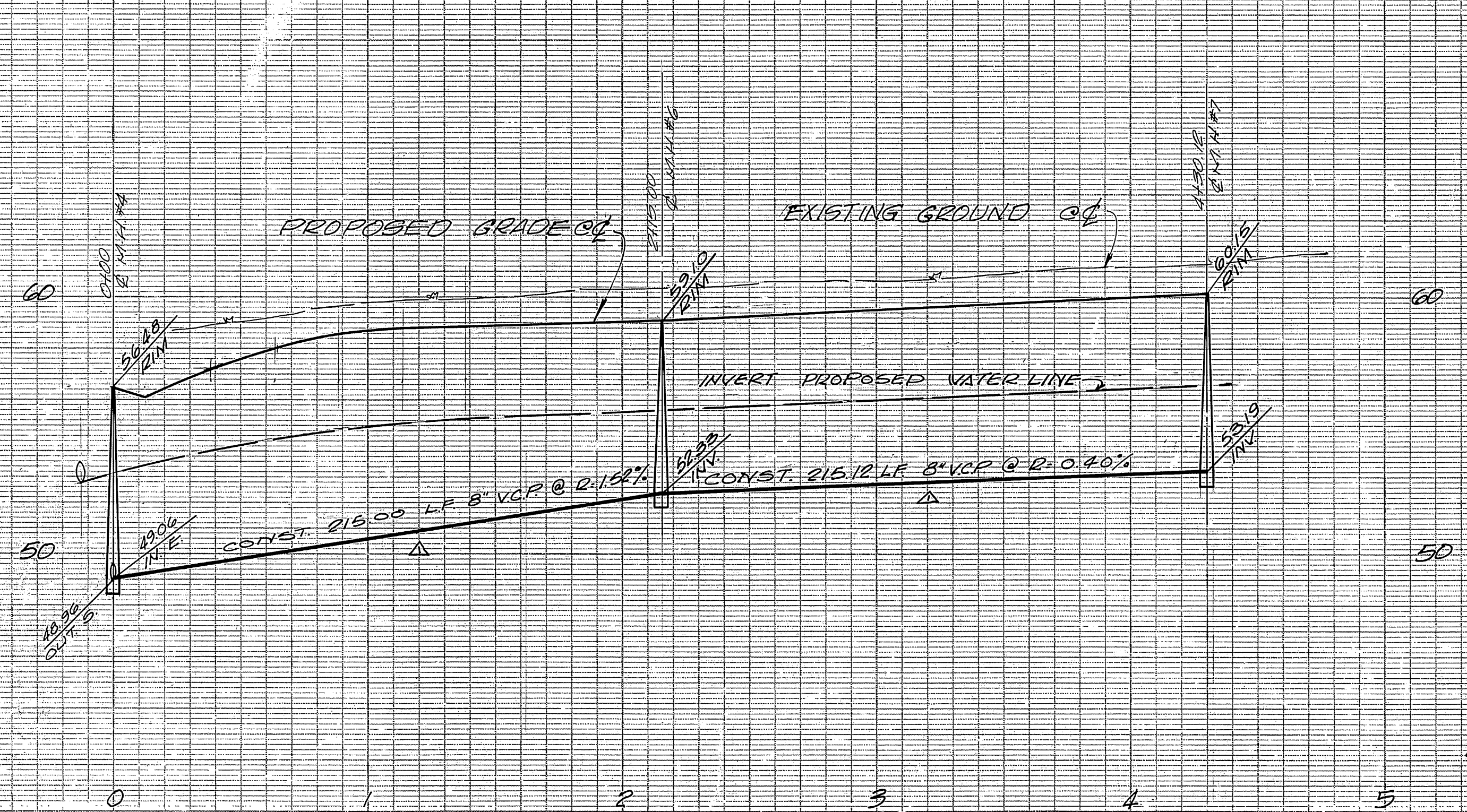
BUTTERFIELD ROAD

PLANS PREPARED UNDER THE SUPERVISION OF
Don M. Lander 12/5/72
DON M. LANDER, R.C.E. 12795 DATE
LANDER ENGINEERING
4120 BIRCH ST., STE 109
NEWPORT BEACH, CALIF.

BENCH MARK
E.L.B. BRASS DISC STAMPED (E.L.B) CAPPED
@ INTERSECTION OF VAN BLVD & VICTORIA AVE.
ELEV. 281.50

APPROVED BY:
WATER DEPARTMENT DATE
APPROVED BY:
William D. Hardin 4-9-73
CHIEF PUBLIC UTILITIES ENG. DATE

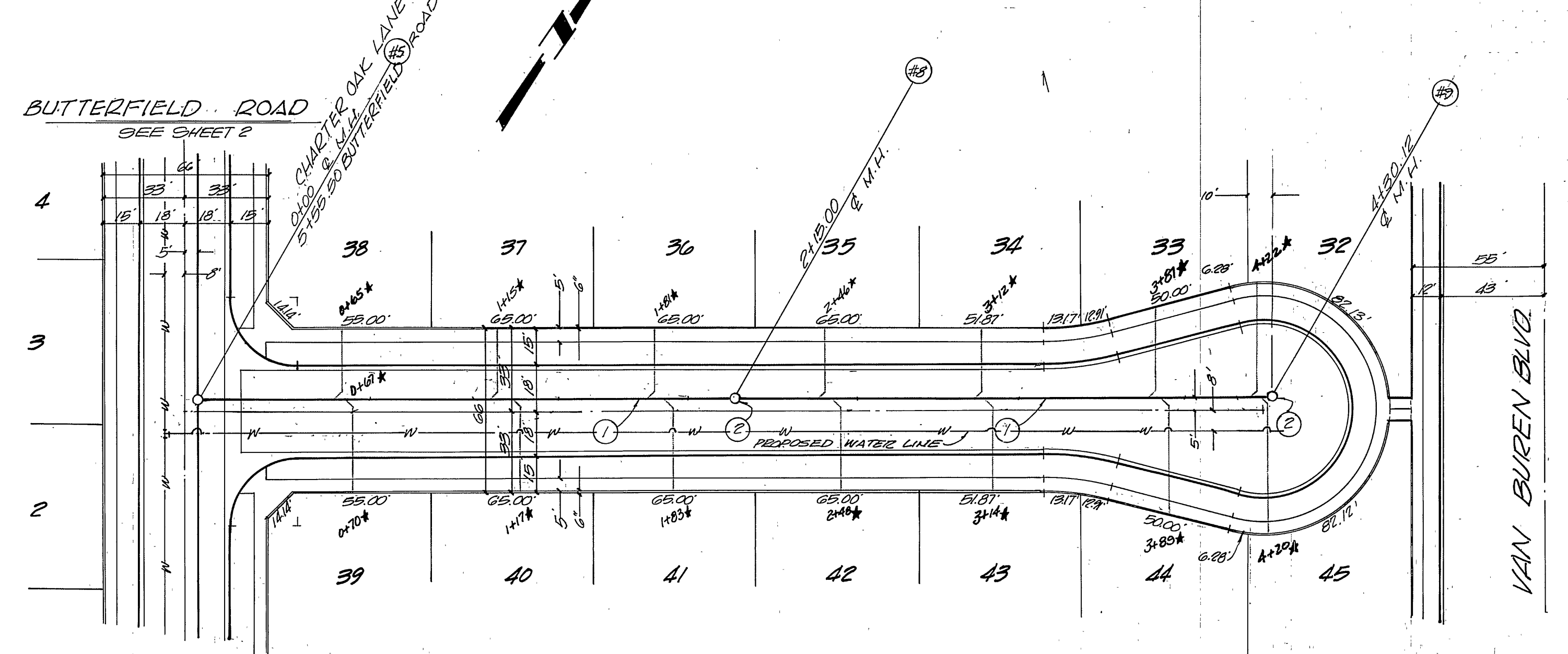
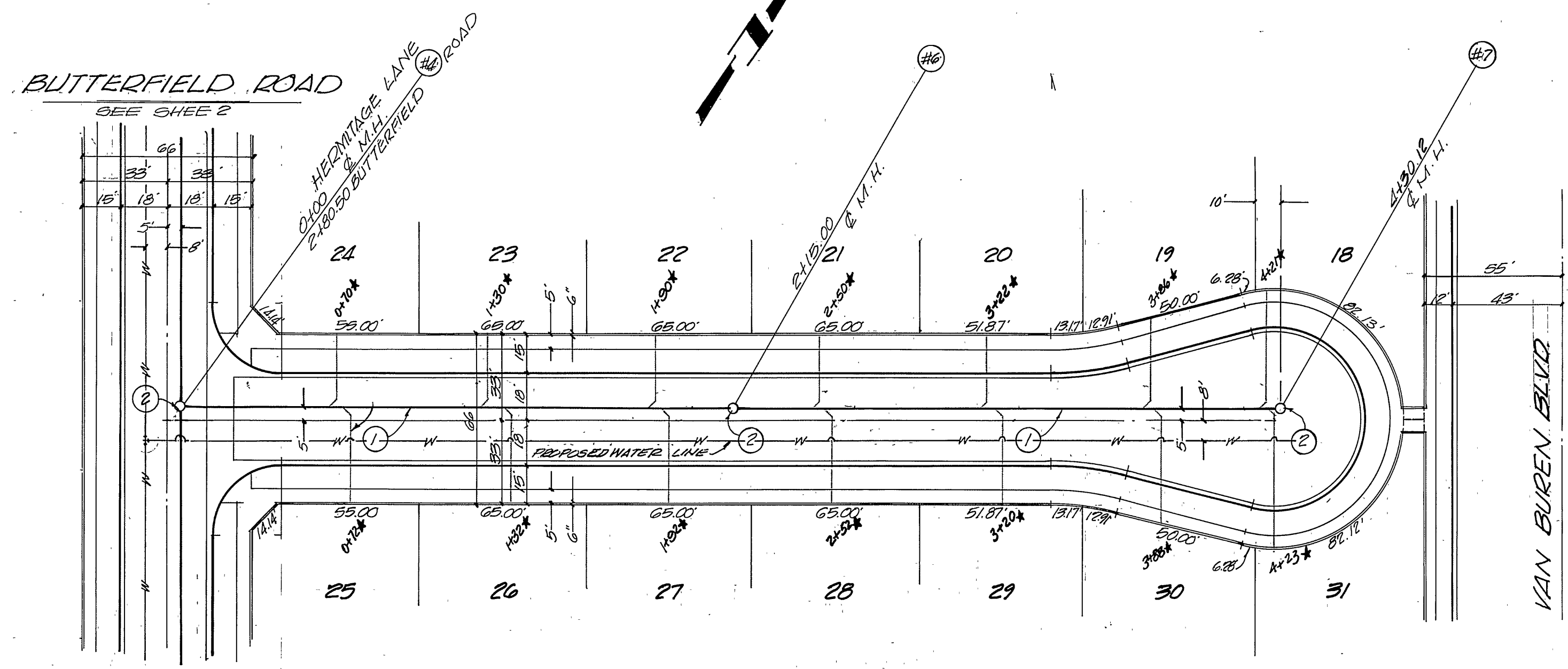
★ 1" AS BOLT	R.A.B. 6-73	CITY OF RIVERSIDE, CALIFORNIA DEPARTMENT OF PUBLIC WORKS	SEWER PLAN & PROFILE TRACT N° 4864 BUTTERFIELD ROAD	PROJECT NO.
△ LOWERED ELEV'S STREET, BENCH MARK	4-16-73			S-934
DESIGNED BY	DRAWN BY W.L.U. CHECKED BY	APPROVED BY DATE 4/11/73	HORIZ. SCALE: 1"=20' VERT. SCALE: 1"=4'	SHEET 2 OF 3 FILE NO.



PROFILE SCALES
 HORIZ: 1" = 40'
 VERT: 1" = 4'

NOTES

- SEE SHEET NO. 1 FOR CONST. NOTES AND GENERAL NOTES.



HERMITAGE LANE

CHARTER OAK LANE

BENCH MARK
 EAB: BRASS DISC STAMPED (EAB) CAPPED
 C INTERSECTION OF VAN BUREN BLVD &
 VICTORIA AVE. ELEV. 33.120

PLANS PREPARED UNDER THE SUPERVISION OF
Don M. Lander 12/5/72
 DON M. LANDER, R.C.E. 12195 DATE
LANDER ENGINEERING
 410 BIRCH ST., STE. 103
 NEWPORT BEACH, CALIF.

* "AS BUILT" R.A.B. 6-73 DESIGNED BY: _____ DRAWN BY: _____ CHECKED BY: _____ DATE: 4/11/73	CITY OF RIVERSIDE, CALIFORNIA DEPARTMENT OF PUBLIC WORKS APPROVED BY: _____ BY DATE: 4/11/73 OFFICE ENGINEER: _____ PUBLIC WORKS DEPARTMENT: _____ TRAFFIC ENGINEER: _____ ASSISTANT CITY ENGINEER: _____	SEWER PLAN & PROFILE TRACT NO 4864 HERMITAGE LANE CHARTER OAK LANE HORIZ. SCALE: 1" = 40' VERT. SCALE: 1" = 4' PROJECT NO. S-934 SHEET 3 OF 3 FILE NO.
------------------------------------------------------------------------------------------------------	-----------------------------------------------------------------------------------------------------------------------------------------------------------------------------------------------------------------------------	-----------------------------------------------------------------------------------------------------------------------------------------------------------------------------------------------

APPROVED BY: _____
 WATER DEPARTMENT DATE: _____
 APPROVED BY: _____
 Howard P. Creamer 4-9-73
 CHIEF PUBLIC UTILITIES ENG. DATE: _____