

- GENERAL NOTES:**
- ALL CONSTRUCTION SHALL BE IN ACCORDANCE WITH THE STANDARD SPECIFICATIONS FOR PUBLIC WORKS CONSTRUCTION, 1976 EDITION AND STANDARD DRAWINGS OF THE CITY OF RIVERSIDE, DEPARTMENT OF PUBLIC WORKS.
  - LOCATION OF LATERALS TO BE DETERMINED IN THE FIELD AT THE DIRECTION OF THE OWNER. AVOID CONFLICT WITH PROPOSED AND/OR EXISTING FACILITIES.

SEWER CURVE DATA			
NO	R	Δ	L
①	291'	14° 30' 00"	63.52'
②	330'	01° 28' 19"	8.38'
③	200'	12° 34' 07"	43.99'

Contractor agrees that he shall assume sole and complete responsibility for job site conditions during the course of construction of this Project, including safety of all persons and property; that this requirement shall apply continuously and not be limited to normal working hours; and that the Contractor shall defend, indemnify and hold the Owner and the Engineer harmless from any and all liability, real or alleged, in connection with the performance of work on this Project, excepting for liability arising from the sole negligence of the Owner or the Engineer.

**CITY OF RIVERSIDE DOMESTIC SYSTEM**

*Wesley J. Taylor*  
CHIEF UTILITIES ENGINEER, WATER

DATE: 3-28-78

APPROVED BY:  
*W. Davidson*  
CHIEF PUBLIC UTILITIES ENG.

**J. F. DAVIDSON ASSOCIATES**  
CIVIL ENGINEERS - SURVEYORS - PLANNERS  
RIVERSIDE, CALIFORNIA

APPROVED BY: *Robert J. Kagan* DATE: 5-10-78  
R.E. No. 12479

W.O. 3568 FOR: MALL DEVELOPMENT F.B.

REVISIONS:

REV SUR LOCATION TO CONSOLIDATE W/...	DATE: 5/10/78
DELETED SOME SEWER LATERALS	DATE: 5/10/78
REVISED ENTRANCE TO TRACT	DATE: 5/10/78

DESIGNED BY: *W. Davidson* DRAWN BY: *W. Davidson* CHECKED BY: *W. Davidson*

**CITY OF RIVERSIDE, CALIFORNIA DEPARTMENT OF PUBLIC WORKS**

APPROVED BY: *William S. Davidson*  
DIRECTOR OF PUBLIC WORKS

DATE: 6/12/73

**SEWER PLAN & PROFILE**

**TRACT 5036 LARAMIE ST. (PRIVATE)**

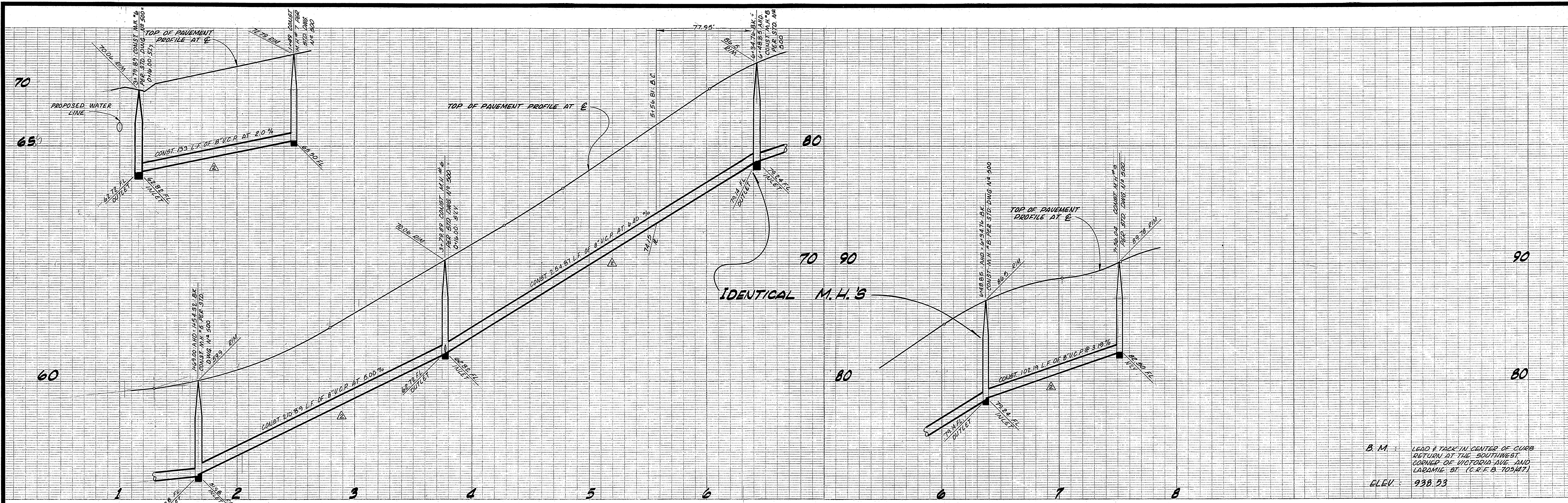
PROJECT NO. **5-936**

SHEET **1** OF **4**

HORIZ. SCALE: 1" = 40' VERT. SCALE: 1" = 4'

FILE NO. **4457**

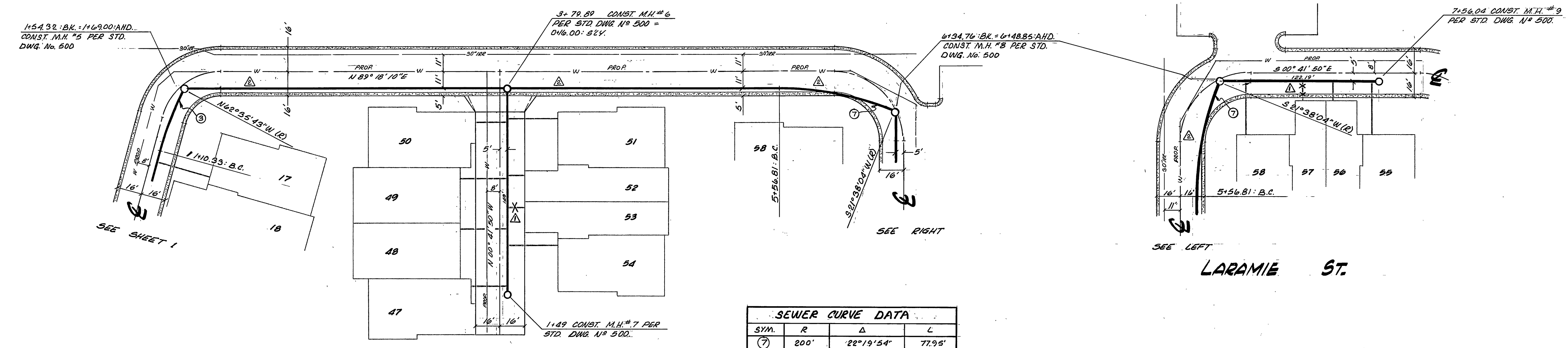




B.M. : LEAD & TACK IN CENTER OF CURB  
 RETURN AT THE SOUTHWEST  
 CORNER OF VICTORIA AVE AND  
 LARAMIE ST. (C.R.F. B. 70547)  
 ELEV. : 938.93

SEE SHEET N° 1 FOR NOTES

LARAMIE ST.



SEWER CURVE DATA			
SYM.	R	Δ	L
(7)	200'	22°19'54"	77.95'

CITY OF RIVERSIDE  
 DOMESTIC SYSTEM  
 Approved by *Haley Hylan* 3-28-78  
 CHIEF UTILITIES ENGINEER, WATER DATE

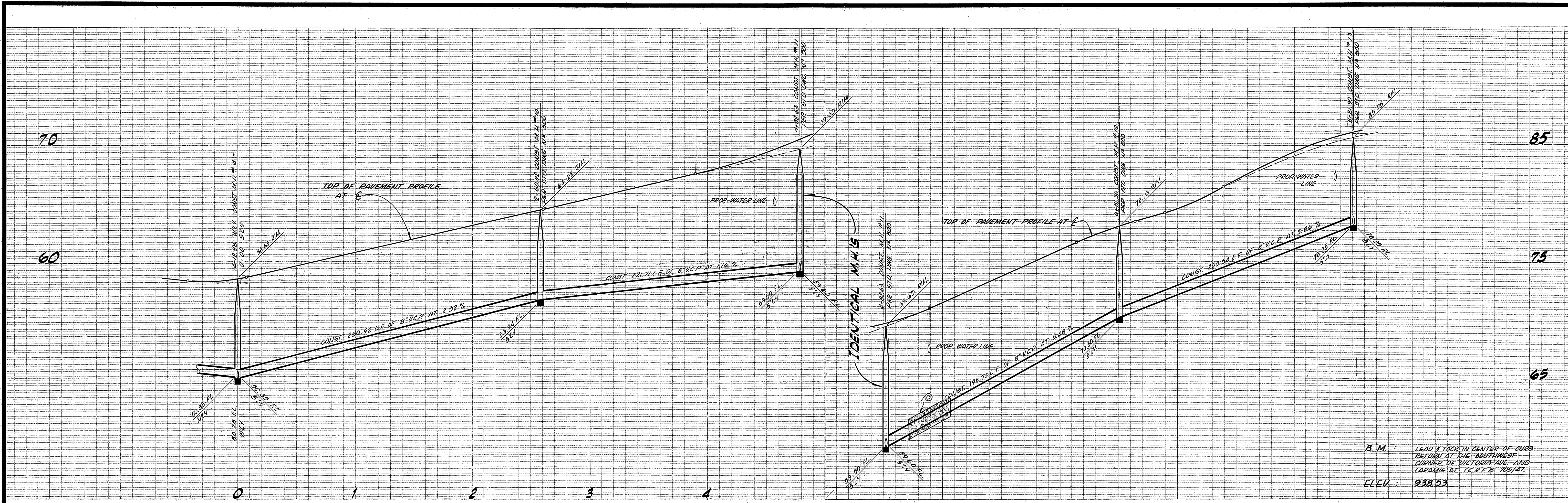
J. F. DAVIDSON ASSOCIATES  
 CIVIL ENGINEERS - SURVEYORS - PLANNERS  
 RIVERSIDE, CALIFORNIA  
 Approved by *[Signature]* DATE 5-10-78  
 R.E. No. 12649  
 W.O. 3568 FOR: MALL DEVELOPMENT F.B.

REVISIONS  
 MARK REVISIONS DATE  
 DESIGNED BY *AW* DRAWN BY *Kael* CHECKED BY *[Signature]*

CITY OF RIVERSIDE, CALIFORNIA  
 DEPARTMENT OF PUBLIC WORKS  
 Approved by *[Signature]* DATE 6/12/78  
 OFFICE ENGINEER  
 PARK DEPARTMENT  
 TRAFFIC DIVISION  
 ASSISTANT CITY ENG.

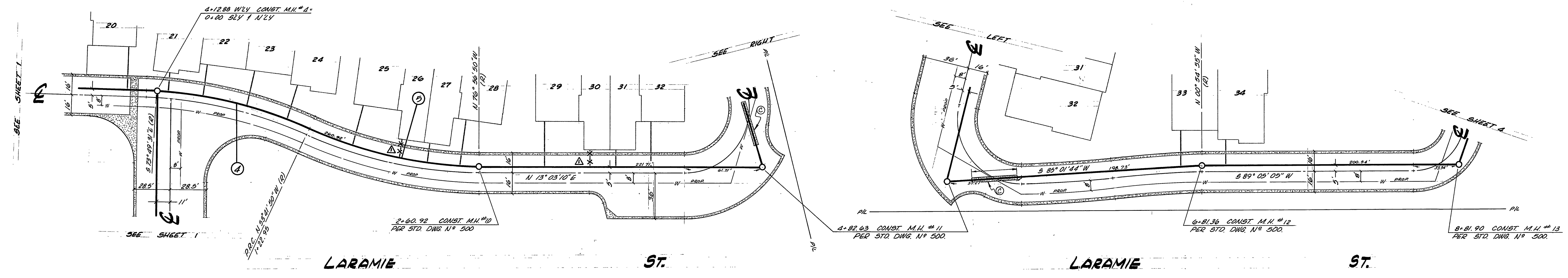
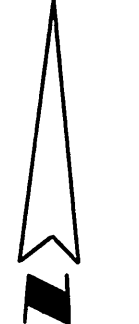
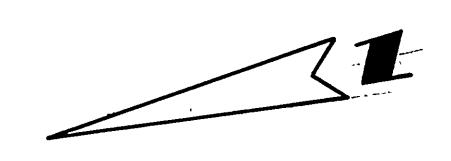
SEWER PLAN & PROFILE  
 TRACT 5036  
 LARAMIE ST.  
 (PRIVATE)  
 PROJECT NO. S-936  
 SHEET 2 OF 4  
 HORIZ. SCALE: 1" = 40' VERT. SCALE: 1" = 4'  
 FILE NO. 4457





B.M.: LEAD & TACK IN CENTER OF CURB RETURN AT THE SOUTHWEST CORNER OF VICTORIA AVE AND LARAMIE ST. (C.R.F.B. 705/AT.  
 ELEV.: 938.53

SEE SHEET NO 1 FOR NOTES



NOTES:  
 (C) Encase sewer main with type "C" conc. Encasement as per Std. Dwg. CWD-023 or install cast iron pipe.

CITY OF RIVERSIDE  
 DOMESTIC SYSTEM  
*Wesley Hylan* 3-28-78  
 CHIEF UTILITIES ENGINEER, WATER

NO	R	Δ	L
①	350'	20° 07' 41"	122.99'
②	340'	23° 15' 00"	137.97'

APPROVED BY:  
*W. H. Gresser* 5-15-73  
 CHIEF PUBLIC UTILITIES ENG.

J. F. DAVIDSON ASSOCIATES  
 CIVIL ENGINEERS - SURVEYORS - PLANNERS  
 RIVERSIDE, CALIFORNIA  
 APPROVED BY: *Robert J. Goggin* DATE: 5-10-73  
 R.E. No. 1567

DESIGNED BY: *A.W.* DRAWN BY: *Earl* CHECKED BY: *Lozano*

CITY OF RIVERSIDE, CALIFORNIA  
 DEPARTMENT OF PUBLIC WORKS  
 APPROVED BY: *William D. Herdman*  
 DIRECTOR OF PUBLIC WORKS  
 DATE: 6/12/73

SEWER PLAN & PROFILE  
 TRACT 5036  
 LARAMIE ST.  
 (PRIVATE)  
 PROJECT NO. 5-936  
 SHEET 3 OF 4  
 HORIZ. SCALE: 1" = 40' VERT. SCALE: 1" = 4'  
 FILE NO. 4457

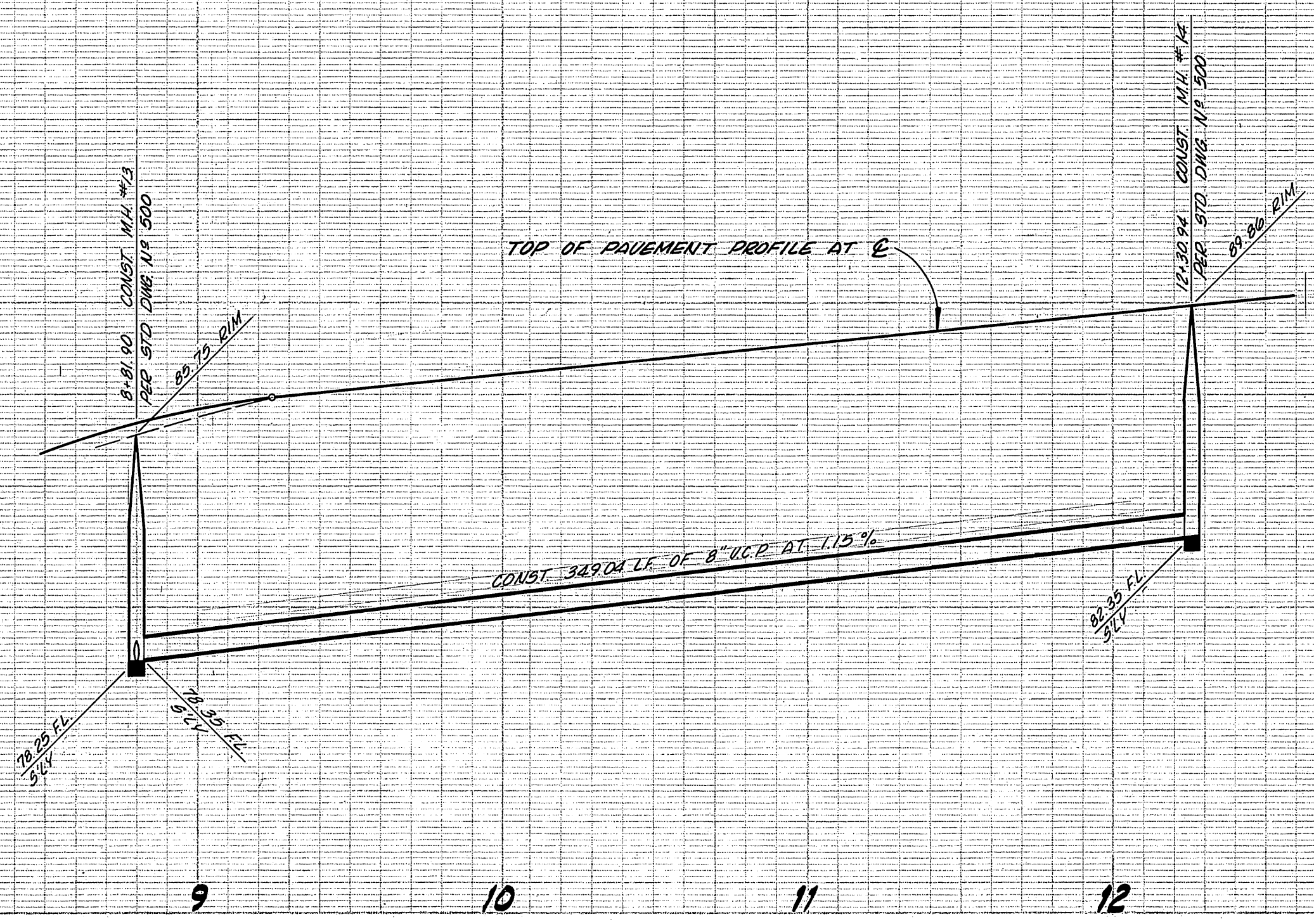


90

80

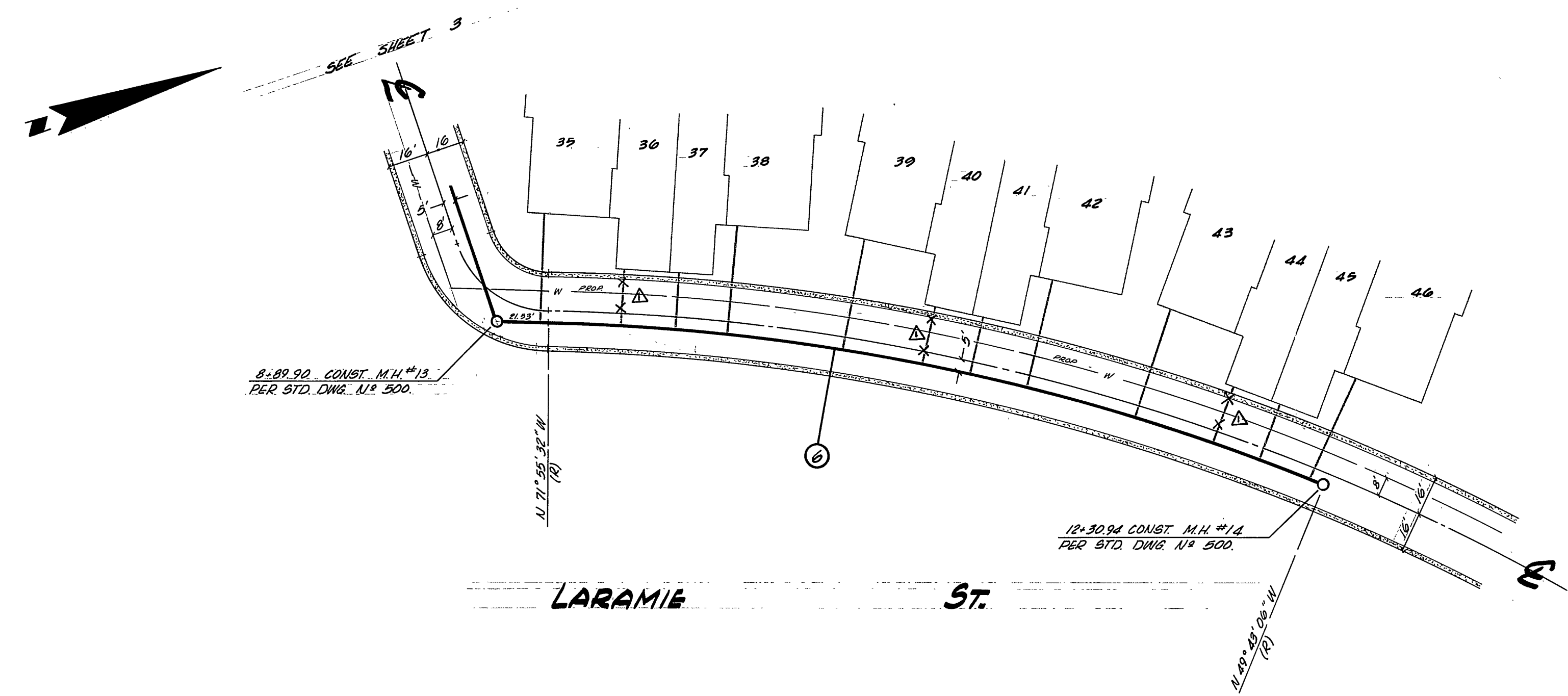
90

80



B.M. LEAD & TACK IN CENTER OF CURB  
 RETURN AT THE SOUTHWEST  
 CORNER OF VICTORIA AVE AND  
 LARAMIE ST. (E.R.F.B. 209/47)  
 ELEV. 938.53

SEE SHEET NO. 1 FOR NOTES



CITY OF RIVERSIDE  
 DOMESTIC SYSTEM

*Wesley Anglen* 3-28-78  
 CHIEF UTILITIES ENGINEER, WATER DATE:

NO	R	Δ	L
①	845'	22° 12' 26"	327.51'

APPROVED BY:  
*W. Davidson* 5-15-73  
 CHIEF PUBLIC UTILITIES ENG. DATE:

J. F. DAVIDSON ASSOCIATES  
 CIVIL ENGINEERS - SURVEYORS - PLANNERS  
 RIVERSIDE, CALIFORNIA

APPROVED BY: *Robert S. Koppin* DATE: 5-10-73  
 R.E. No. 126291

W.O. 3568 FOR: MALL DEVELOPMENT F.B.

APPROVED BY: \_\_\_\_\_ DATE: \_\_\_\_\_  
 OFFICE ENGINEER  
 PARK DEPARTMENT  
 TRAFFIC DIVISION

APPROVED BY: \_\_\_\_\_ DATE: \_\_\_\_\_  
 DIRECTOR OF PUBLIC WORKS

DESIGNED BY: \_\_\_\_\_ DRAWN BY: *Kel* CHECKED BY: *Wesley*

CITY OF RIVERSIDE, CALIFORNIA  
 DEPARTMENT OF PUBLIC WORKS

APPROVED BY: \_\_\_\_\_ DATE: \_\_\_\_\_  
 OFFICE ENGINEER  
 PARK DEPARTMENT  
 TRAFFIC DIVISION

APPROVED BY: \_\_\_\_\_ DATE: \_\_\_\_\_  
 DIRECTOR OF PUBLIC WORKS

DATE: 6/12/73

SEWER PLAN & PROFILE  
 TRACT 5036  
 LARAMIE ST.  
 (PRIVATE)

PROJECT NO. 3-936  
 SHEET 4 OF 4  
 FILE NO. 4457

HORIZ. SCALE: 1" = 40' VERT. SCALE: 1" = 4'