

40

30

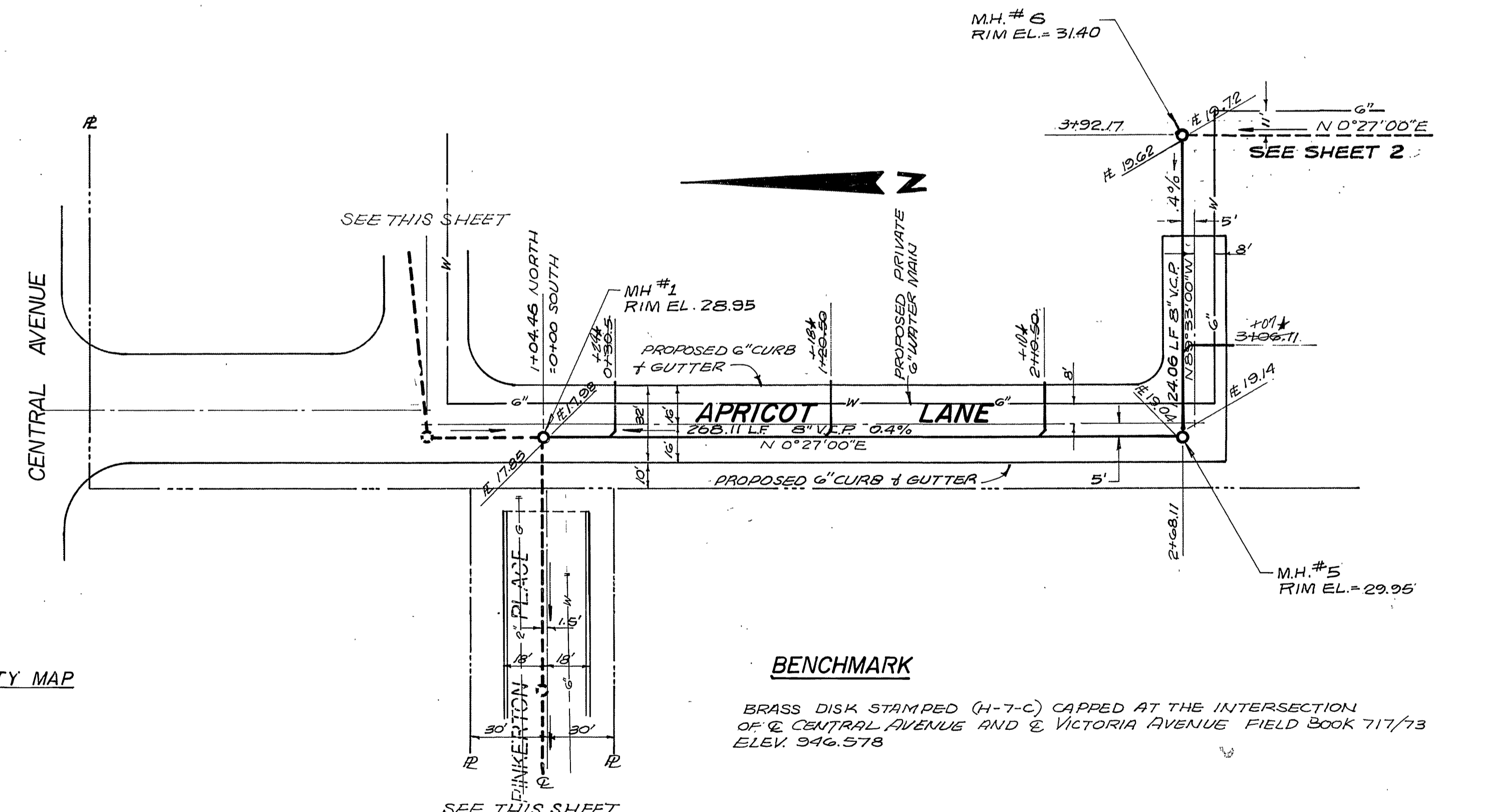
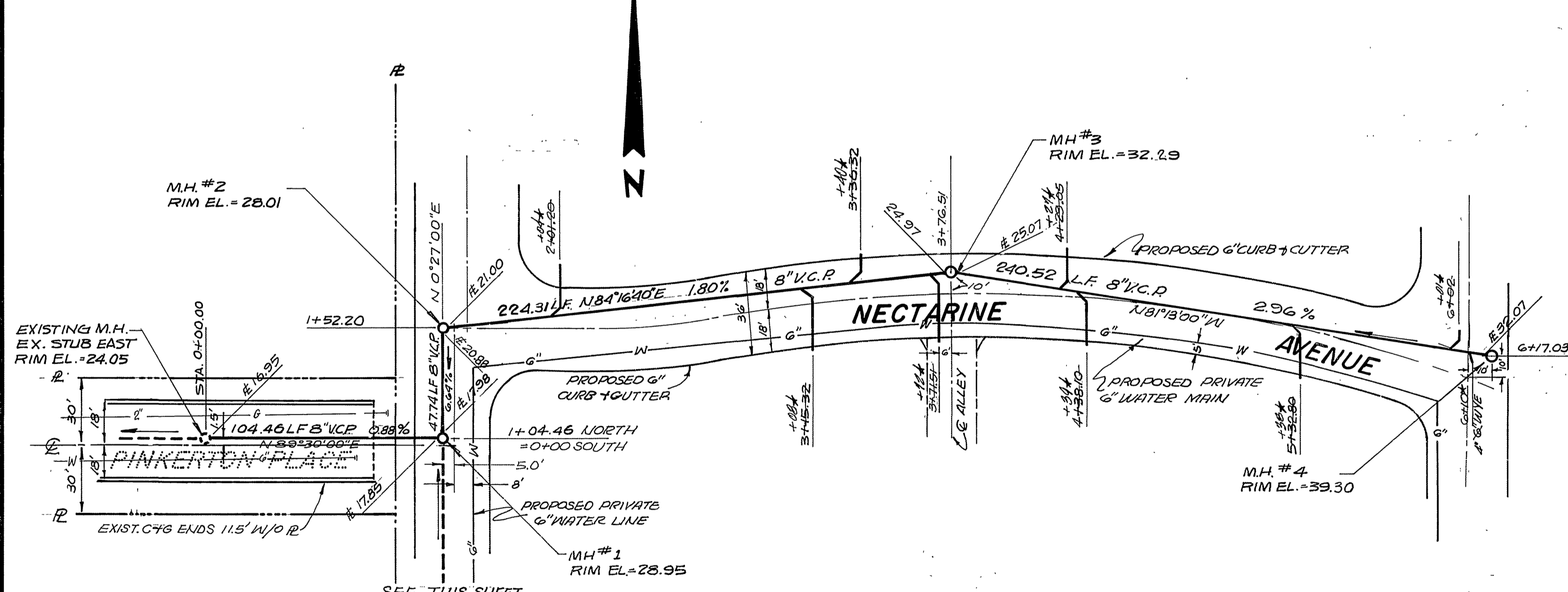
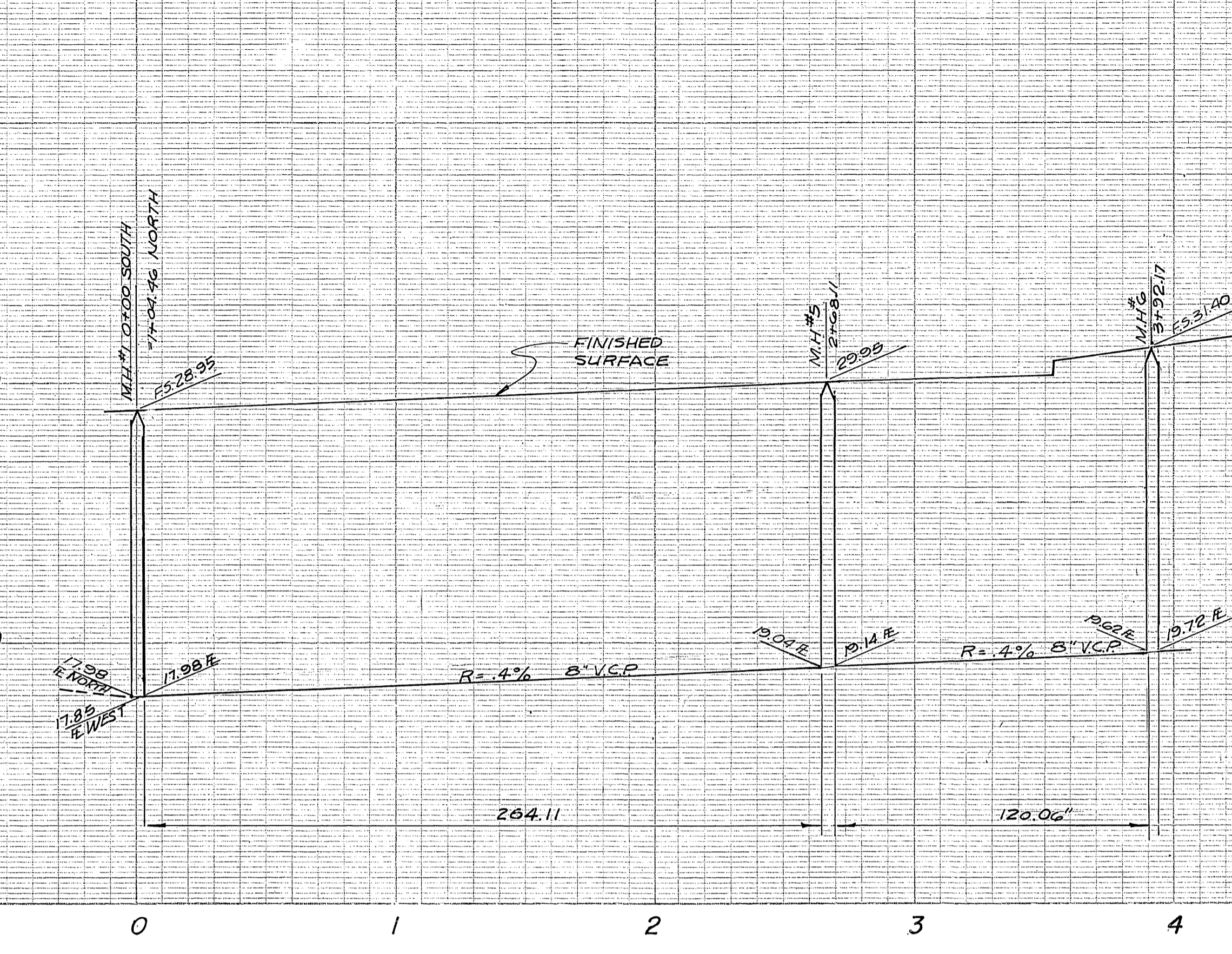
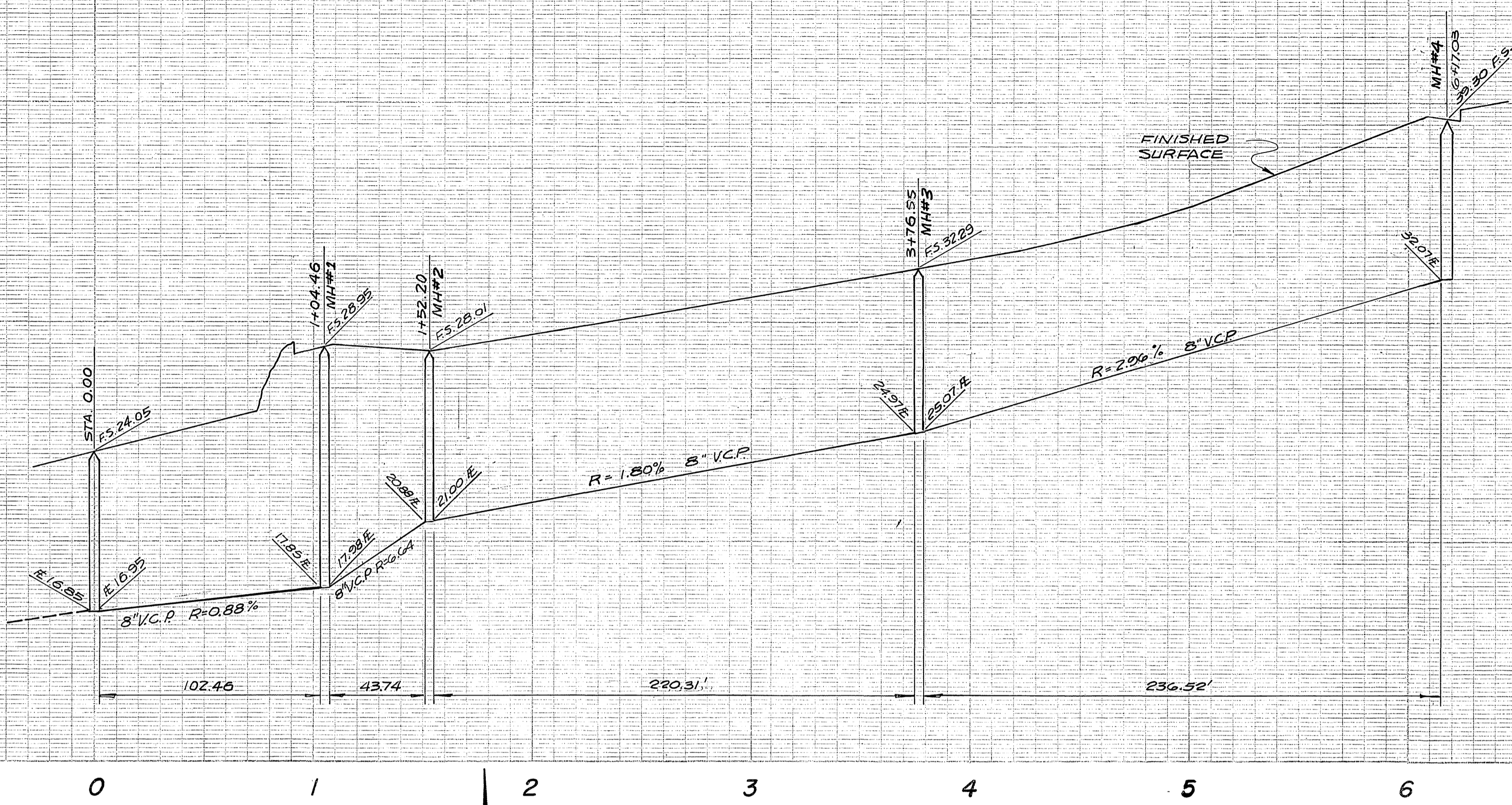
20

10

30

20

10



**SEWER NOTES**

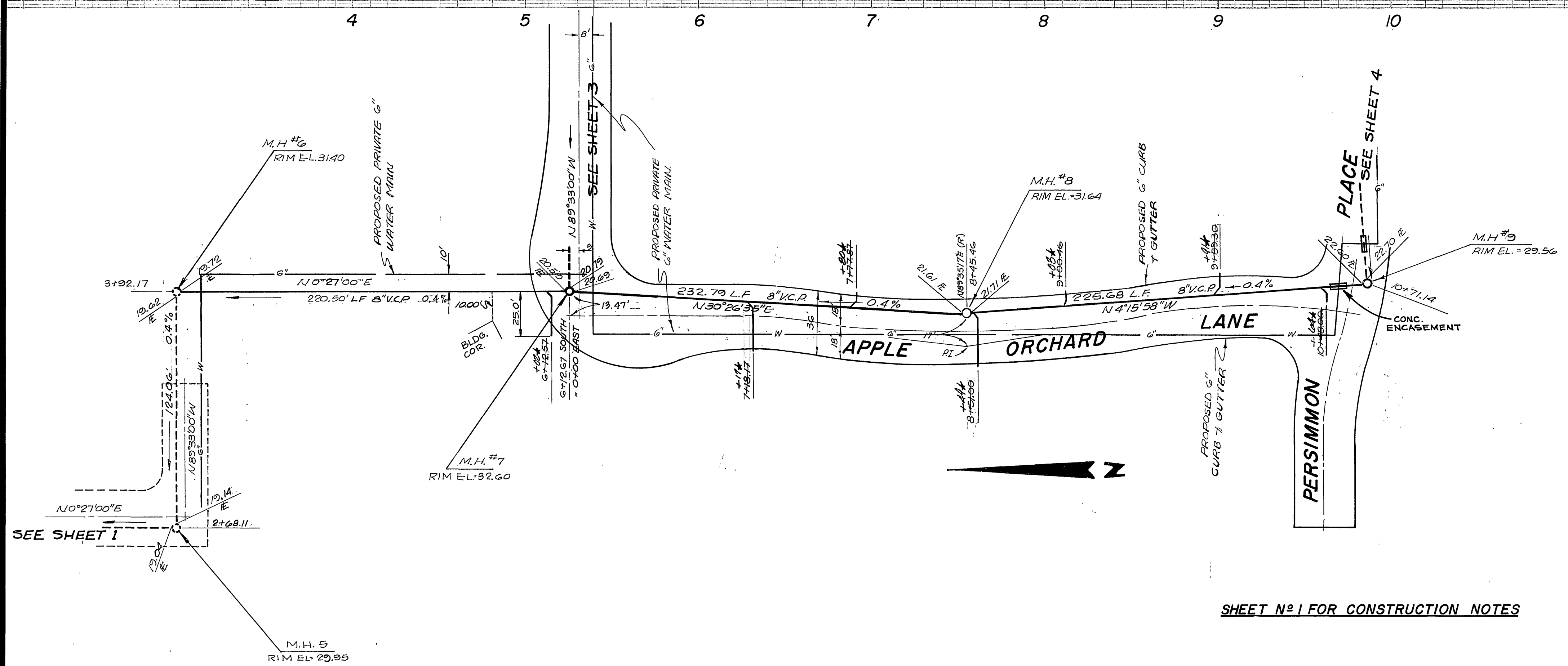
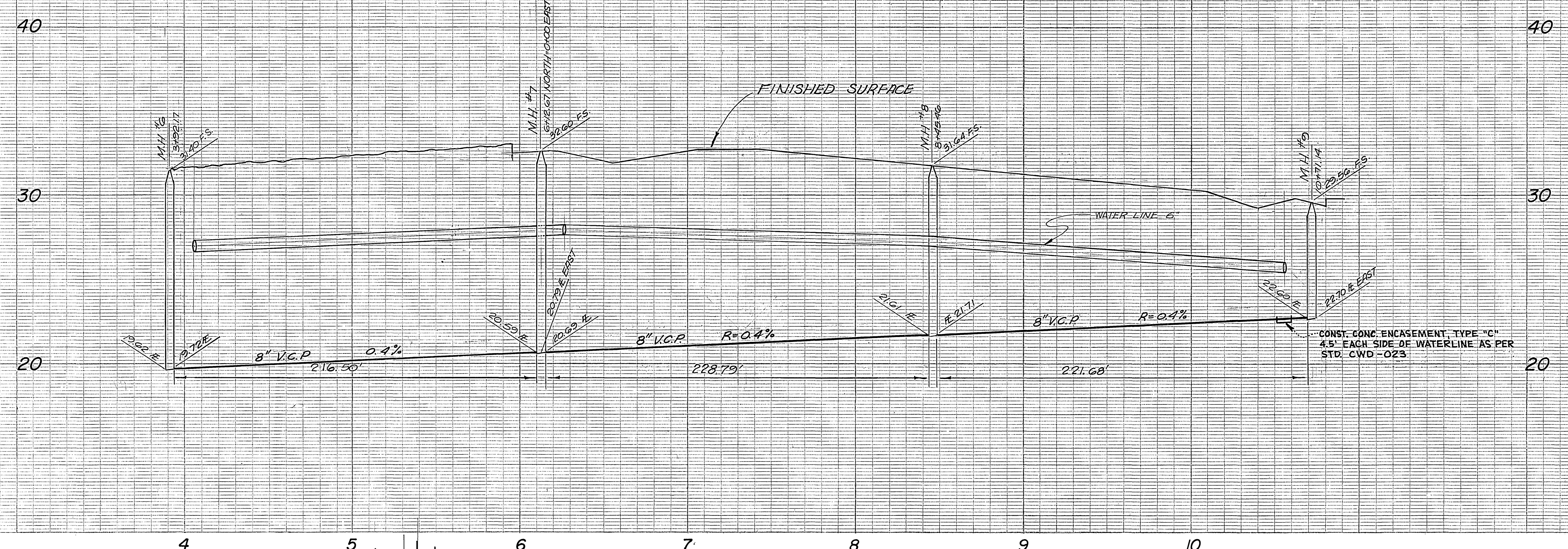
1. CONSTRUCTION SHALL BE IN ACCORDANCE WITH STANDARD SPECIFICATIONS FOR PUBLIC WORKS CONSTRUCTION, 1970 EDITION, AND CITY OF RIVERSIDE STANDARD DRAWINGS.
2. LOCATION OF ALL WYES, TO BE VERIFIED IN THE FIELD BY THE SUPERINTENDENT.
3. ALL LATERALS ARE 4" EXCEPT AS NOTED.
4. ALL LATERALS TO BE INSTALLED TO A POINT 1 (ONE) FOOT BACK OF CURB.
5. ALL LATERALS TO BE INSTALLED WITH 2% SLOPE MINIMUM.

SEE SHEET N#2 FOR VICINITY MAP

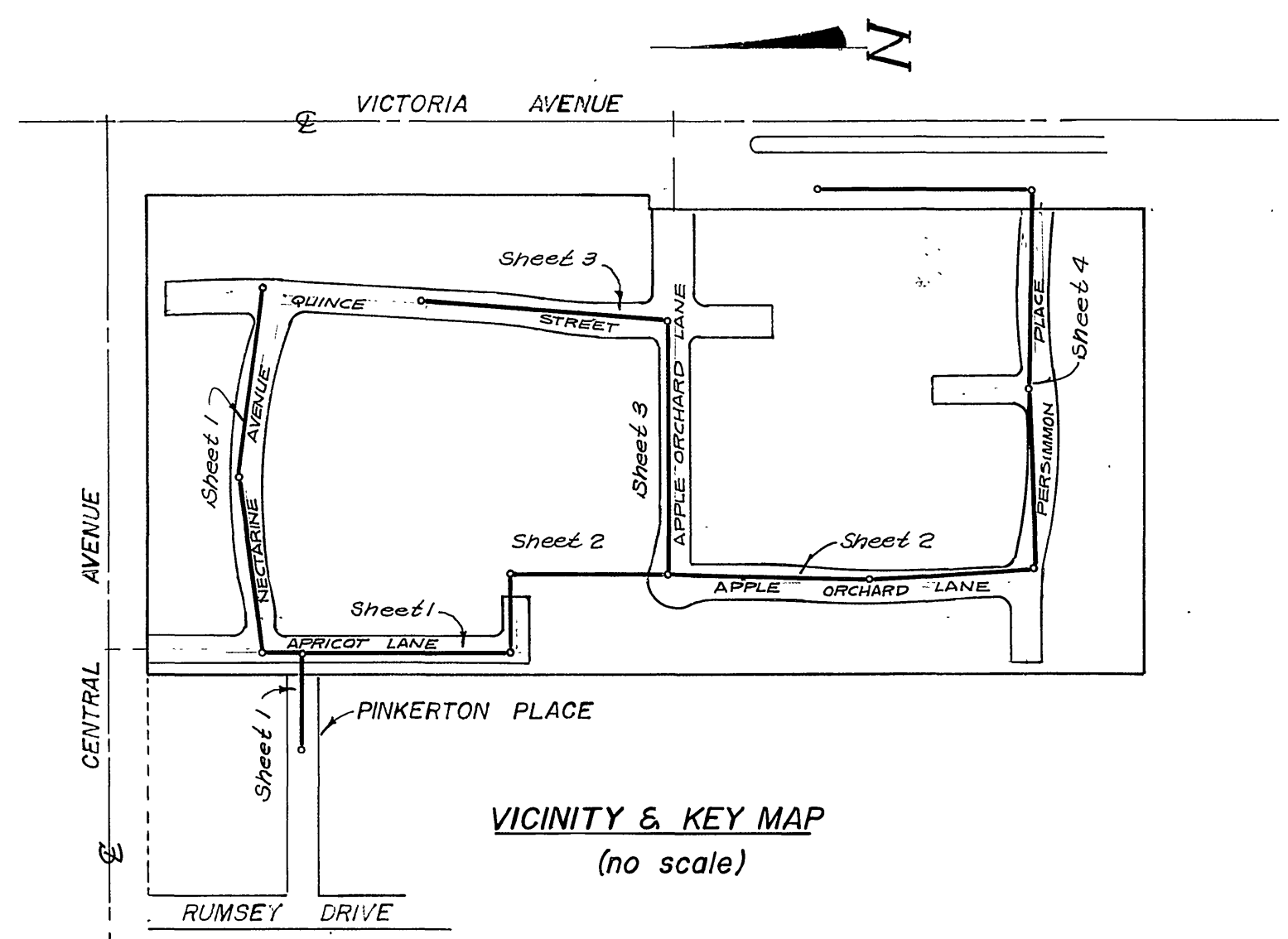
**BENCHMARK**

BRASS DISK STAMPED (H-7-C) CAPPED AT THE INTERSECTION OF CENTRAL AVENUE AND VICTORIA AVENUE FIELD BOOK 717/73 ELEV. 346.578

APPROVED BY  CHIEF PUBLIC UTILITIES Water Division	PREPARED UNDER SUPERVISION OF: <i>Philip A. Gustafson</i> PHILIP A. GUSTAFSON R.C.E. 13875	CITY OF RIVERSIDE, CALIFORNIA DEPARTMENT OF PUBLIC WORKS	INDEXED P.R. PROJECT NO. <b>S-937</b>
Date	DATE 11/4/73	APPROVED BY OFFICE ENGINEER PARK DEPARTMENT TRAFFIC DIVISION ASSISTANT CITY ENG.	SHEET <b>1</b> OF <b>4</b>
		DATE 6/12/73	FILE NO.
			HORIZ. SCALE: 1" = 40' VERT. SCALE: 1" = 4'

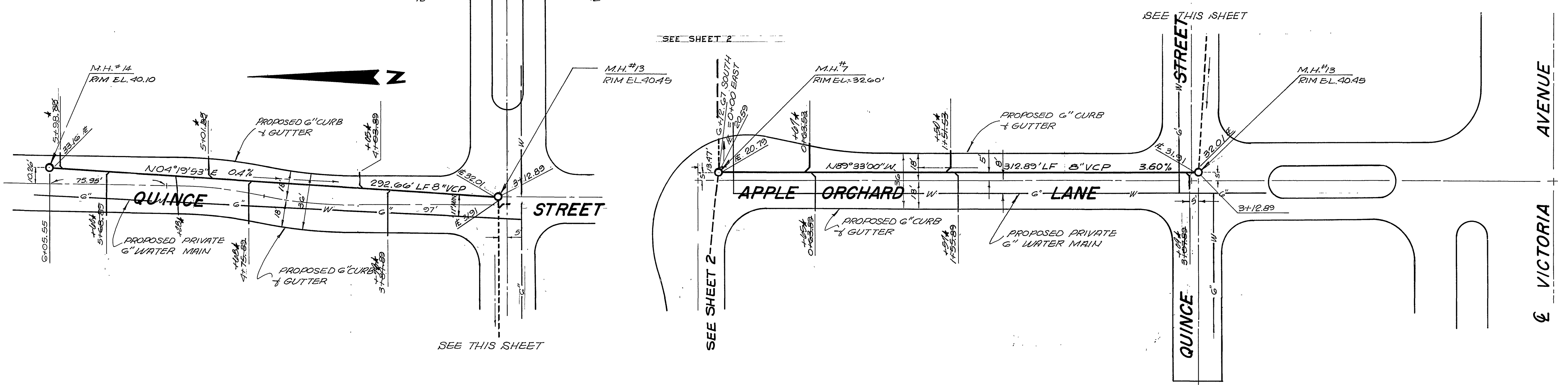
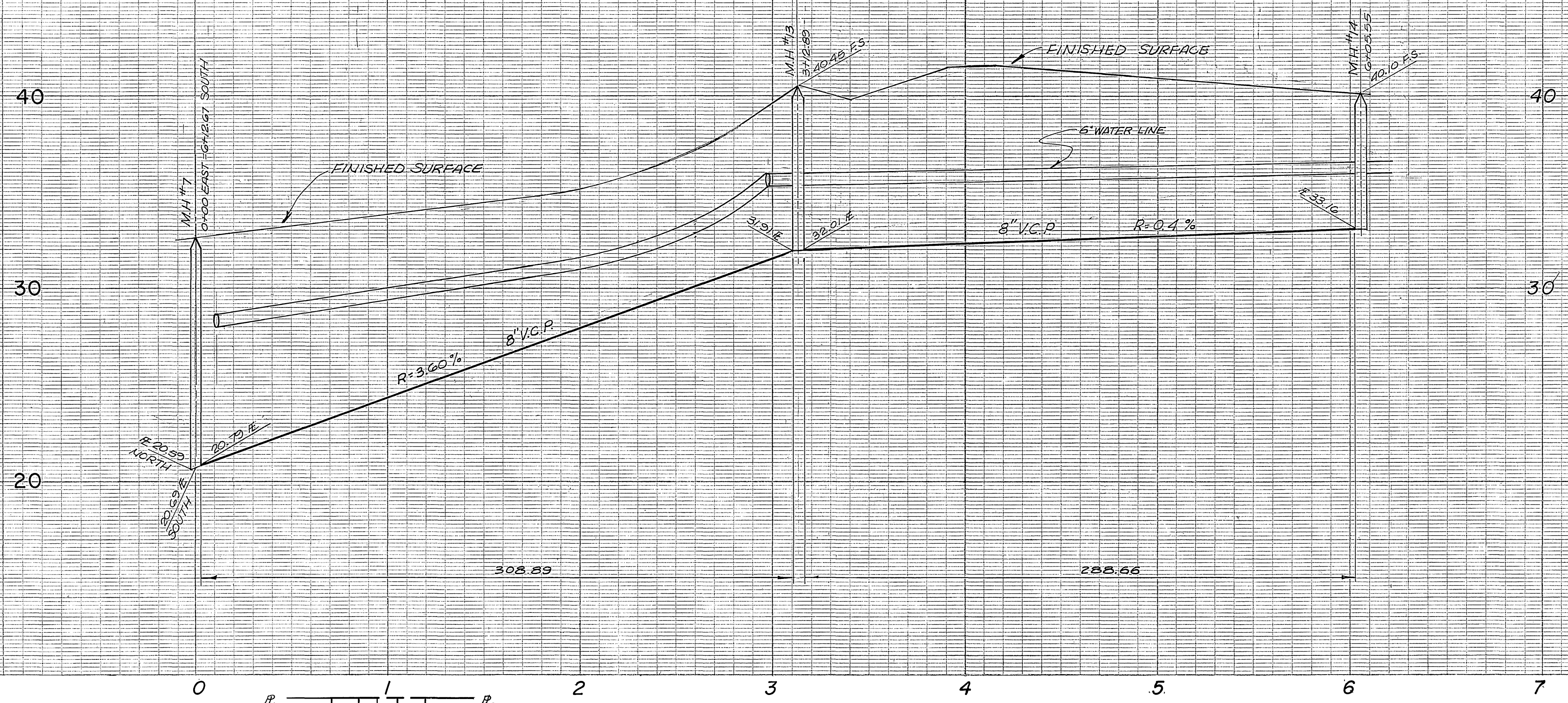


**BENCHMARK**  
 BRASS DISK STAMPED (H-T-C) CAPPED AT THE INTERSECTION  
 OF CENTERLINE CENTRAL AVENUE CENTERLINE VICTORIA  
 AVENUE FIELD BOOK 711/73 ELEV. 946.578.



SHEET N° 1 FOR CONSTRUCTION NOTES

APPROVED BY  CHIEF PUBLIC UTILITIES Water Division	PREPARED UNDER SUPERVISION OF  PHILIP A. GUSTAFSON R.C.E. 13875	DATE 4/2/73	CITY OF RIVERSIDE, CALIFORNIA DEPARTMENT OF PUBLIC WORKS	PROJECT NO. S-937
DATE 5/5/73	R.C.E. 13875	DATE 4/2/73	APPROVED BY  DIRECTOR OF PUBLIC WORKS	SHEET 2 OF 4
DESIGNED BY DRAWN BY CHECKED BY	REVISIONS APPR. DATE MARK	DATE 6/12/73	SEWER PLAN & PROFILE TRACT NO. 4835	FILE NO.
HORIZ. SCALE: 1" = 40' VERT. SCALE: 1" = 4'			* '48 BUILT "LAB. 10-74"	



**BENCHMARK**  
BRASS DISK STAMPED (H-7-C) CAPPED AT THE INTERSECTION OF CENTERLINE CENTRAL AVENUE AND THE CENTERLINE OF VICTORIA AVENUE. FIELD BOOK 717/73 BLEV 946.578

SEE SHEET N°1 FOR CONSTRUCTION NOTES  
SEE SHEET N°2 FOR VICINITY MAP

APPROVED BY  
*[Signature]*  
CHIEF PUBLIC UTILITIES Date  
Water Division

PREPARED UNDER SUPERVISION OF  
*[Signature]* 11/14/73  
PHILIP A. GUSTAFSON DATE  
R.C.E. 13875

\* 78 Editor RAB 10/24

MARK	REVISIONS	APPR.	DATE

DESIGNED BY \_\_\_\_\_ DRAWN BY \_\_\_\_\_ CHECKED BY *[Signature]*

CITY OF RIVERSIDE, CALIFORNIA  
DEPARTMENT OF PUBLIC WORKS

APPROVED BY	BY	DATE	APPROVED BY
OFFICE ENGINEER	<i>[Signature]</i>	6/12/73	<i>[Signature]</i>
PARK DEPARTMENT			DIRECTOR OF PUBLIC WORKS
TRAFFIC DIVISION			
ASSISTANT CITY ENG.			

DATE 6/12/73

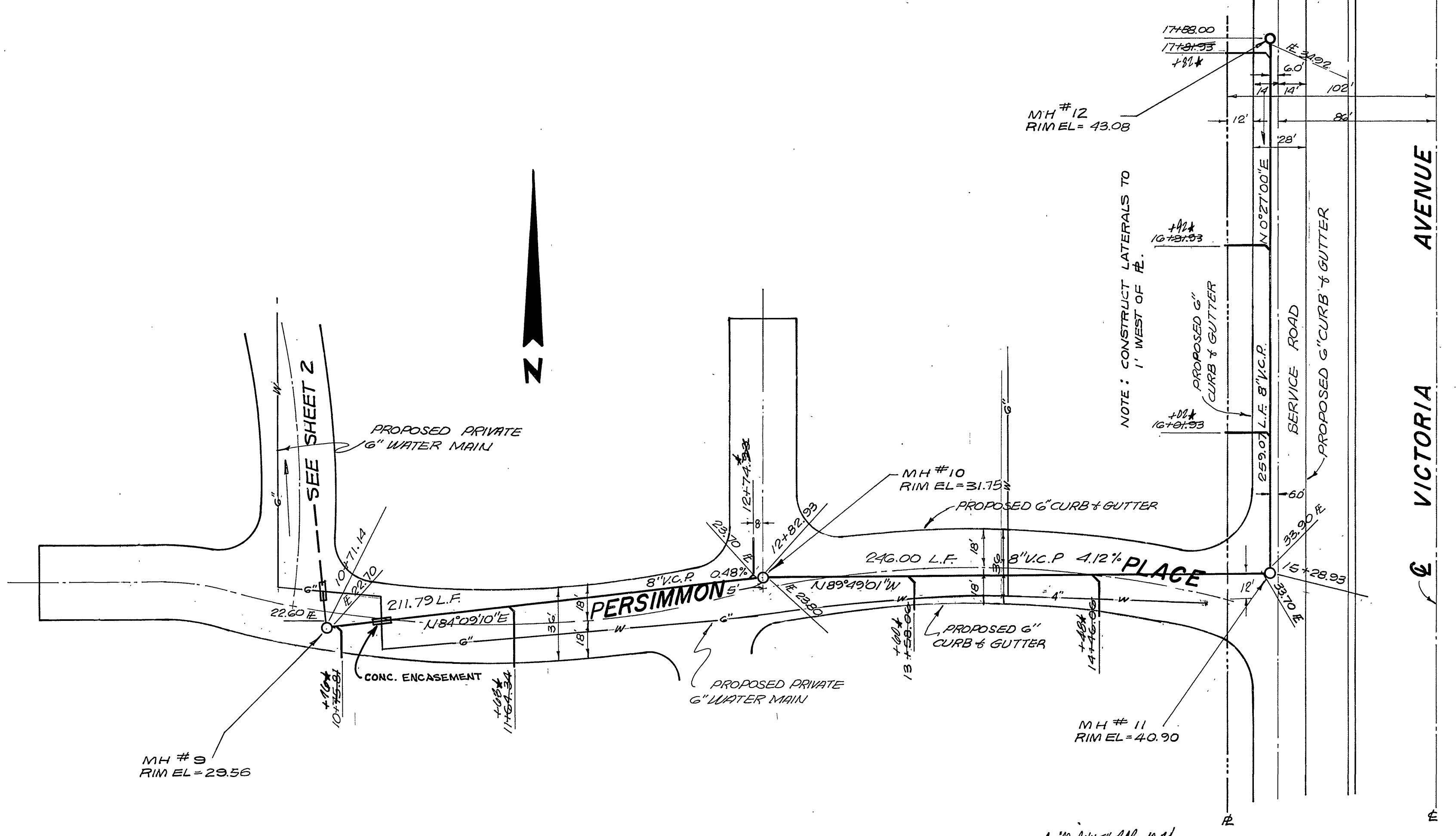
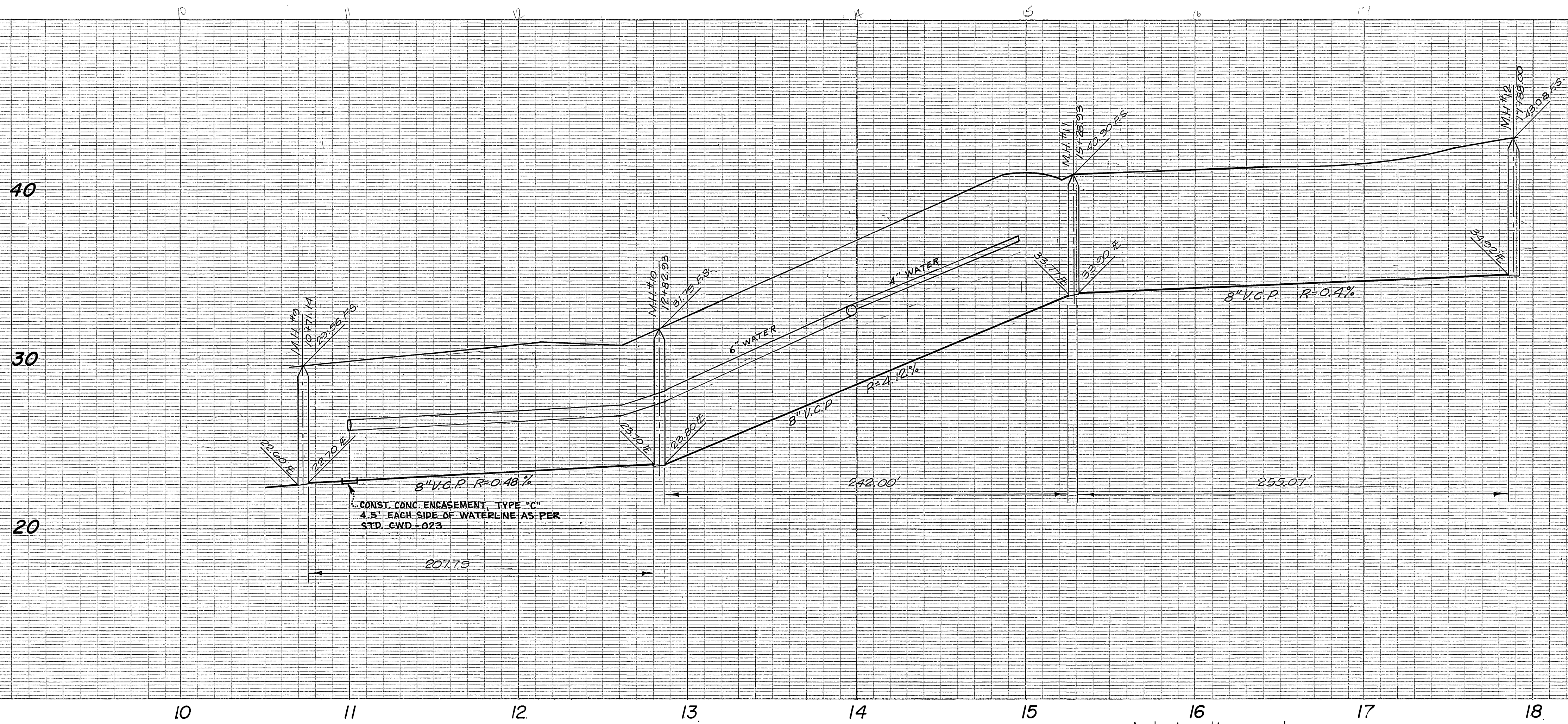
PROJECT NO.  
S-937

SEWER PLAN & PROFILE  
TRACT NO. 4835

SHEET 3 OF 4

HORIZ. SCALE: 1" = 40' VERT. SCALE: 1" = 4'

FILE NO.



**BENCHMARK**  
BRASS DISK STAMPED (H-T-C) CAPPED AT THE INTERSECTION  
OF CENTERLINE CENTRAL AVENUE AND THE CENTERLINE  
OF VICTORIA AVENUE FIELD BOOK 717/73 ELEV. 946.578

SEE SHEET N°1 FOR CONSTRUCTION NOTES  
SEE SHEET N°2 FOR VICINITY MAP

APPROVED BY  CHIEF, PUBLIC UTILITIES Water Division Date	PREPARED UNDER SUPERVISION OF  PHILIP A. GUSTAFSON R.C.E. 13875 DATE 11/4/73	CITY OF RIVERSIDE, CALIFORNIA DEPARTMENT OF PUBLIC WORKS APPROVED BY  DIRECTOR OF PUBLIC WORKS DATE 6/12/73	PROJECT NO. S-937 SHEET 4 OF 4 FILE NO.
DESIGNED BY DRAWN BY CHECKED BY	REVISIONS APPR. DATE	MARK ASSISTANT CITY ENG.	HORIZ. SCALE: 1" = 40' VERT. SCALE: 1" = 4'