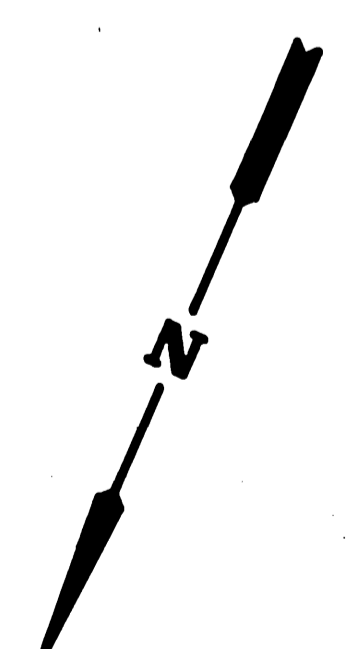
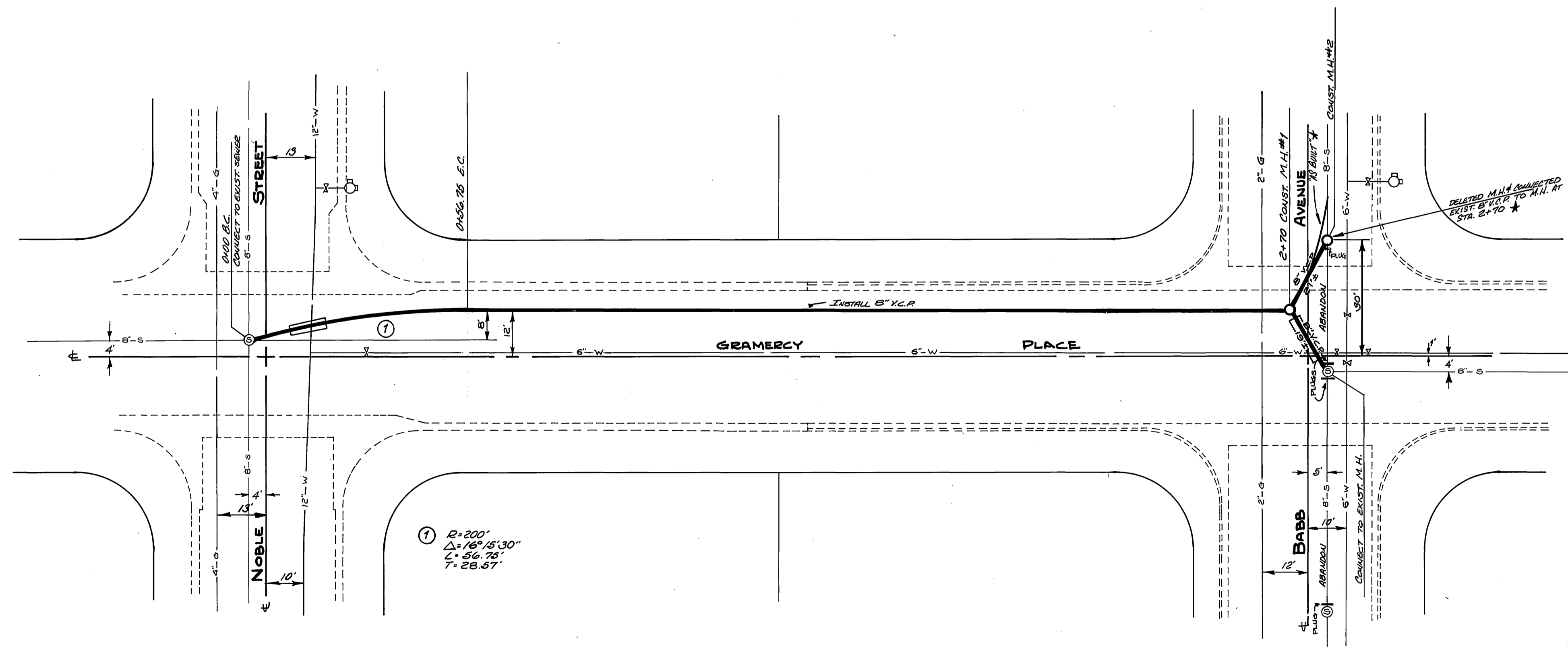


**GENERAL NOTES**

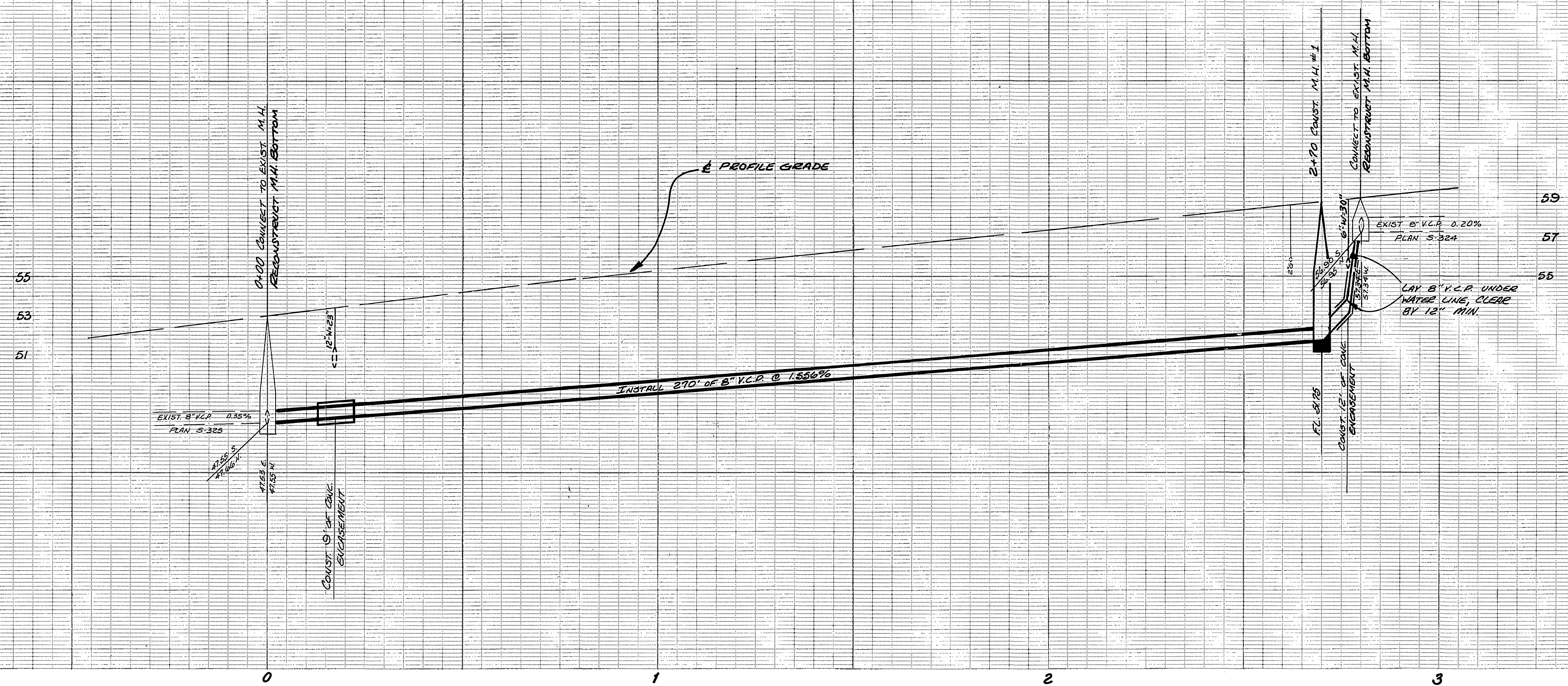
1. CONSTRUCTION SHALL BE IN ACCORDANCE WITH STANDARD SPECIFICATIONS FOR PUBLIC WORKS CONSTRUCTION, 1973 EDITION.
2. THE FOLLOWING STANDARD DRAWINGS APPLY:  
 NO 500 FOR MANHOLES  
 NO 452 FOR PIPE BEDDING  
 NO 453 FOR RESURFACING  
 NO 540 FOR FRAME AND COVER
3. CONC. ENCASUREMENT SHALL BE 4.5' MIN. EACH SIDE OF WATERLINE OR AS INDICATED. USE CASE III AS PER STD. DWG. NO. 452.

F.B. 957-66  
 ELEV. 761.39  
 B.M. P.K. NAIL IN LEAD IN CENTER OF SE. CURB RETURN OF WELLS AVE. AND NOBLE ST.



\* "AS BUILT" 085 14

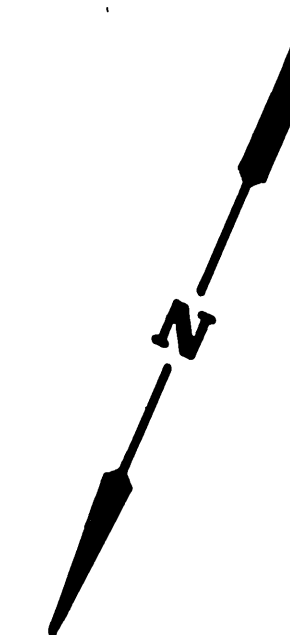
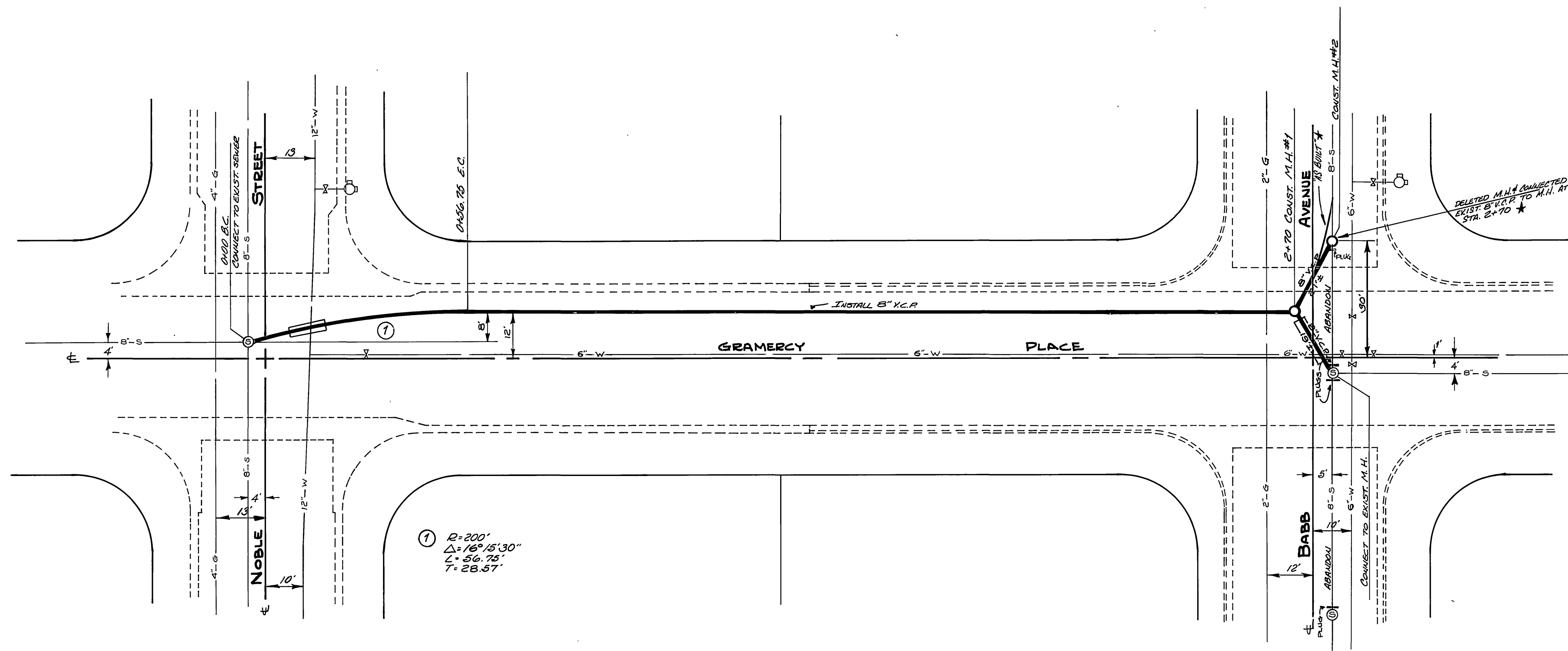
APPROVED BY: <i>Robert Taylor</i> 8/29/73 FOREMAN, S.W. DIV. CHIEF ENGR. - WATER	DESIGNED BY: <i>Hou</i> DRAWN BY: <i>RAB</i> CHECKED BY:	<b>CITY OF RIVERSIDE</b> PUBLIC WORKS DEPARTMENT		<b>GRAMERCY PLACE SEWER</b> FROM NOBLE STREET TO BABB AVENUE	ACCOUNT NO. 32-577-595 <b>S-946</b> SHEET 1 OF 1 FILE NO.
		APPROVED BY: PRINCIPAL ENGINEER PARK DEPARTMENT TRAFFIC DIVISION CHIEF P. W. ENGINEER	DATE: 9-29-73		



**GENERAL NOTES**

1. CONSTRUCTION SHALL BE IN ACCORDANCE WITH STANDARD SPECIFICATIONS FOR PUBLIC WORKS CONSTRUCTION, 1973 EDITION.
2. THE FOLLOWING STANDARD DRAWINGS APPLY:  
 NO 500 FOR MANHOLES  
 NO 482 FOR PIPE BEDDING  
 NO 453 FOR RESURFACING  
 NO 540 FOR FRAME AND COVER
3. CONC. ENCASUREMENT SHALL BE 4.5' MIN. EACH SIDE OF WATERLINE OR AS INDICATED. USE CASE III AS PER STD. DWG. NO. 452.

FB 957-66  
 ELEV. 761.39  
 B.M. 7\"/>



\* 1/8\"/>

APPROVED BY: <i>Robert Taylor</i> GEN. Supt. and Chief Eng. - Water	DATE: 9/29/73	<b>CITY OF RIVERSIDE</b> PUBLIC WORKS DEPARTMENT		<b>GRAMERCY PLACE SEWER</b> FROM NOBLE STREET TO BABB AVENUE	ACCOUNT NO. 32-577-595 <b>S-946</b> SHEET 1 OF 1
		PRINCIPAL ENGINEER: <i>[Signature]</i> PARK DEPARTMENT: <i>[Signature]</i> TRAFFIC DIVISION: <i>[Signature]</i> CHIEF P. W. ENGINEER: <i>[Signature]</i>	APPROVED BY: <i>[Signature]</i> PUBLIC WORKS DIRECTOR: <i>[Signature]</i>		
DESIGNED BY: <i>W.M.A.L.</i> DRAWN BY: <i>B.A.B.</i> CHECKED BY:		FILE NO.			