

GENERAL NOTES

1. Construction shall be in accordance with the Standard Specifications for Public Works Construction, 1973 Edition, and City of Riverside Standard Drawings.
2. It shall be the responsibility of the contractor to clear the right of way in accordance with the provisions of the law as it affects each utility including irrigation lines and appurtenances and at no cost to the City.
3. Pipe shall be bedded per Case I, Standard Drawing No. 452, unless otherwise specified on plan.
4. Location of wyes and laterals to be determined at the direction of the owner.
5. All stubs and laterals to be constructed in accordance with Standard Dwg. 562. Stubs shall be plugged and capped.
6. Manhole frame and covers to be set as noted on profile.
7. Laterals are to be 4" and extended to property line.
8. Prior to construction of sewer, contractor is to expose existing sewer and contact Engineer for verification of existing elevations.
9. The vertical curve on Nettleton Court shall be staked on 10.00' stations.

- CAUTION -
PACIFIC TELEPHONE
CABLES UNDERGROUND
BEFORE EXCAVATING
CALL COLLECT:

7:30 A.M. to 5 P.M.	After Hours & Holidays
Orange County 714-633-0811	714-547-6606
Riverside County 714-684-0071	714-547-6606
Inyo County 714-684-0071	714-547-6606
San Bernardino County 714-684-0071	714-547-6606
Los Angeles County 213-621-3111	24 HOUR SERVICE
Ventura County 213-621-3111	
San Diego County 714-298-0595	714-232-0027

FOR FREE CABLE LOCATING SERVICE

NOTICE TO CONTRACTOR
 The existence and location of any underground utility pipes or structures shown on these plans are obtained by a search of the available records. To the best of our knowledge, there are no existing utilities except as shown on these plans.
 The Contractor is required to take due precautionary measures to protect the utility lines shown and any other lines not of record or not shown on these plans.

APPROVED BY:
Harold R. Brown 9-25-73
 Chief Water Utility Engineer

ALBERT A. WEBB ASSOCIATES
 CIVIL ENGINEERS
 RIVERSIDE, CALIFORNIA
 APPROVED BY: *[Signature]* DATE 9/13/73
 R.E. No. 9876
 W.O. 73-54 FOR BRATTAIN CONST. CO. F.B. 1029

MARK	REVISIONS	APPR.	DATE

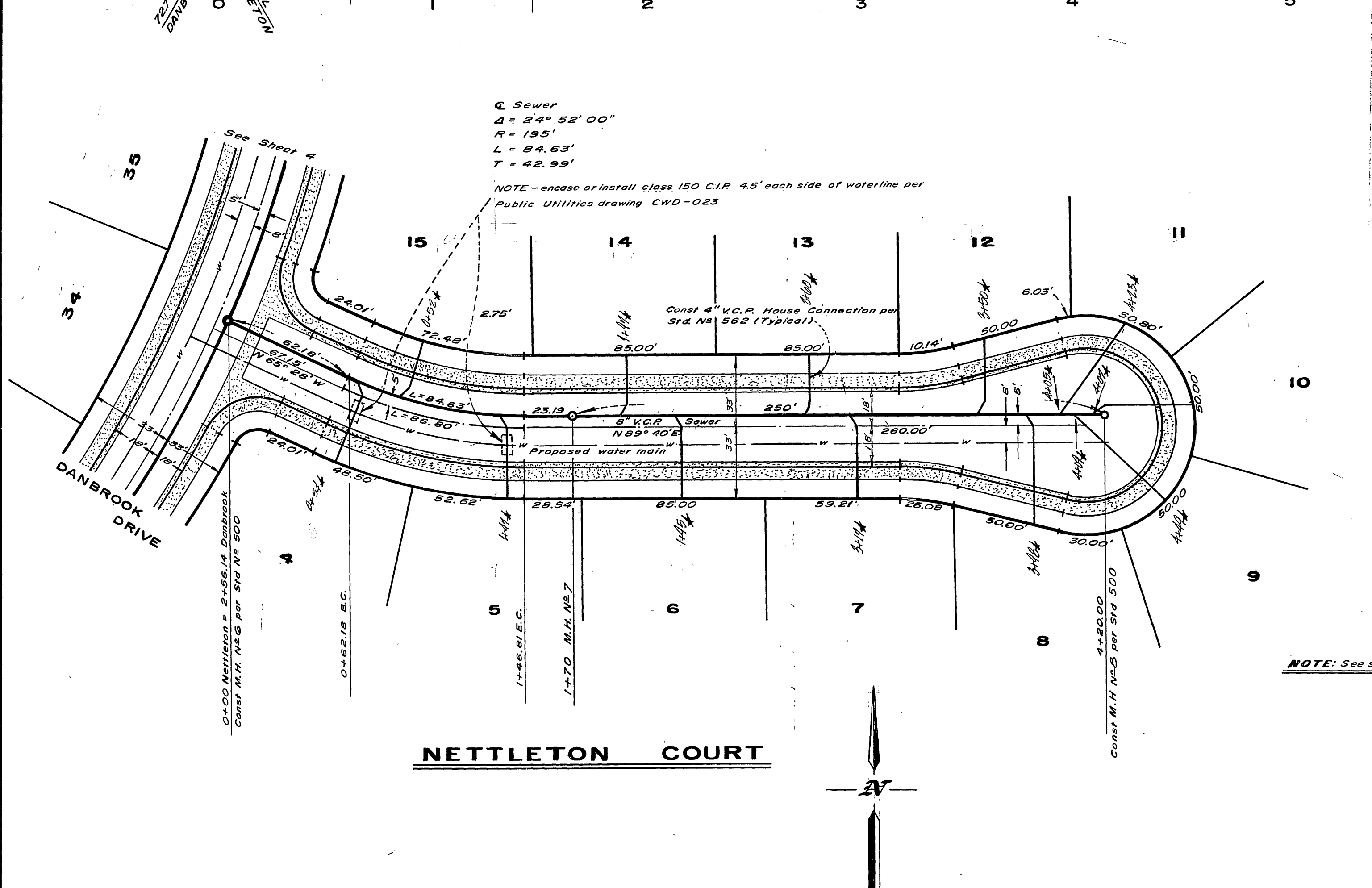
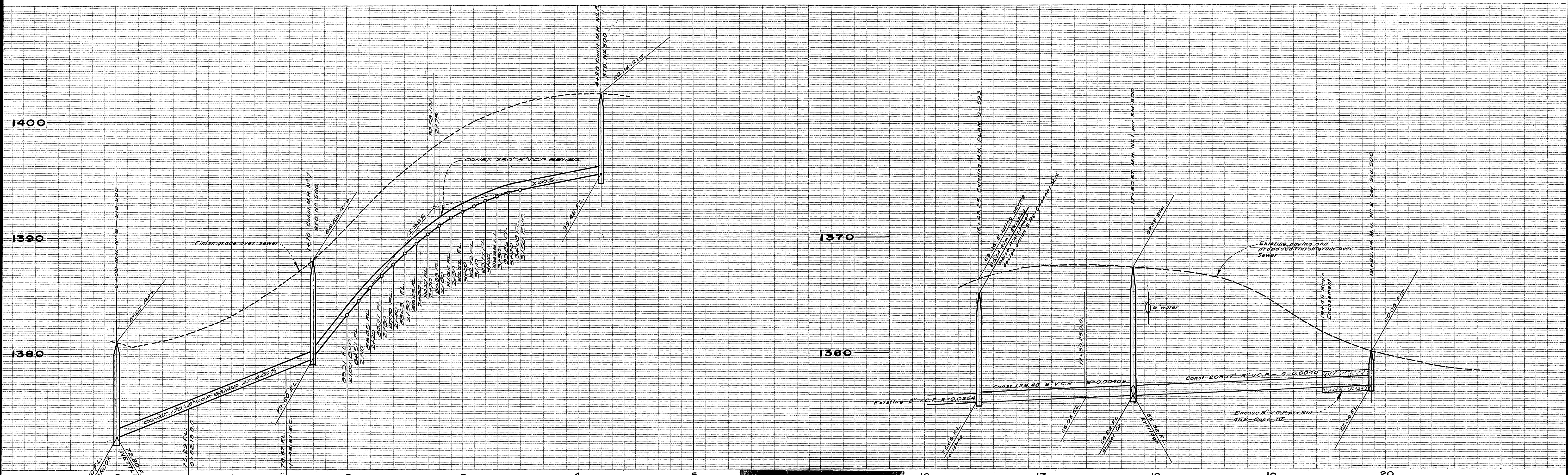
CITY OF RIVERSIDE, CALIFORNIA
 DEPARTMENT OF PUBLIC WORKS

APPROVED BY	BY	DATE	APPROVED BY
OFFICE ENGINEER	<i>[Signature]</i>	9/21	<i>[Signature]</i>
PARK DEPARTMENT			
TRAFFIC DIVISION			
ASSISTANT CITY ENG.	<i>[Signature]</i>	9/21	

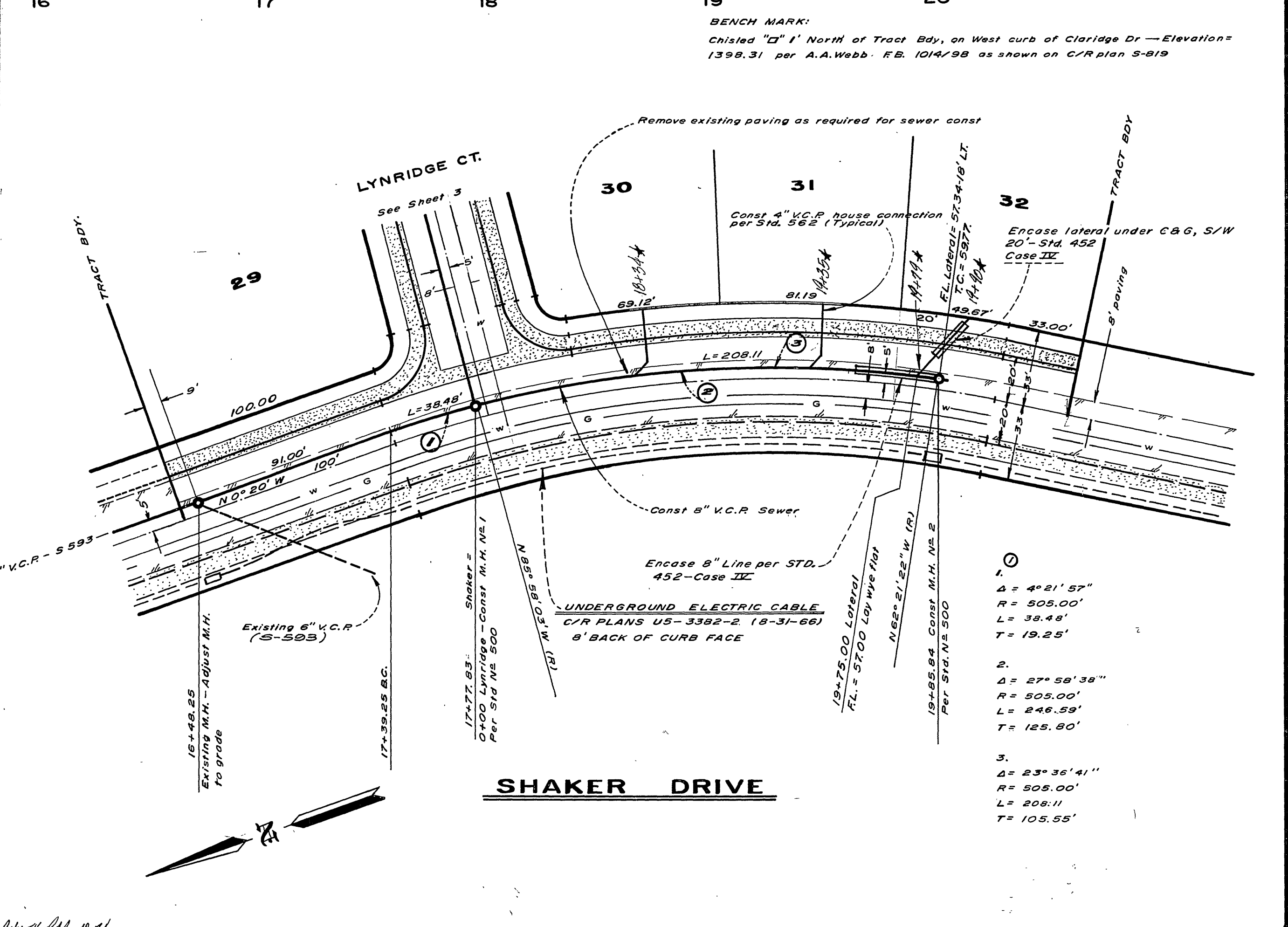
DATE 9-21-73

SEWER PLAN & PROFILE
INDEX SHEET
DETAILS
 TRACT 5137
 HORIZ. SCALE: 1" = 60' VERT. SCALE: 1" =

PROJECT NO. 73-54
S-950
 SHEET 1 OF 5
 FILE NO. 73-54-B

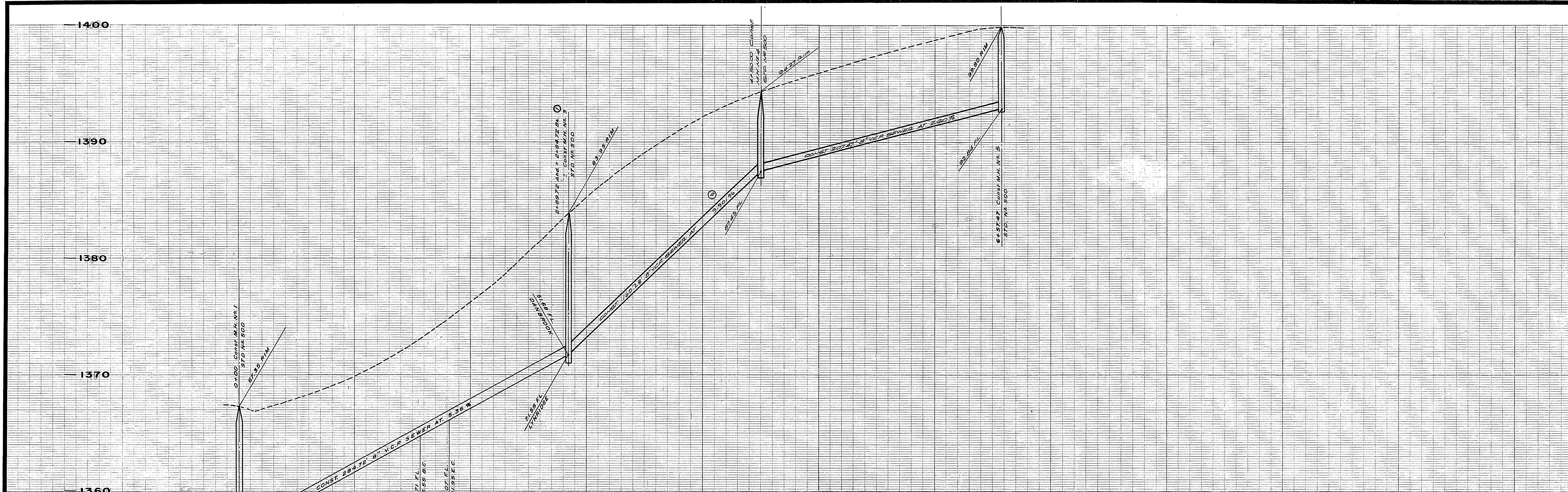


-CAUTION-
PACIFIC TELEPHONE
CABLES UNDERGROUND
BEFORE EXCAVATING
CALL COLLECT:
 7:30 A.M. to 5 P.M. & Holidays
 After Hours
 Orange County 714-633-0811 714-547-6606
 Riverside County 714-684-0071 714-547-6606
 Inyo County 714-684-0071 714-547-6606
 San Bernardino County 714-684-0071 714-547-6606
 Los Angeles County 213-621-3111
 Ventura County 213-621-3111
 San Diego County 714-298-0595 714-232-0027
FOR FREE CABLE LOCATING SERVICE



NOTE: See sheet One for General Notes.

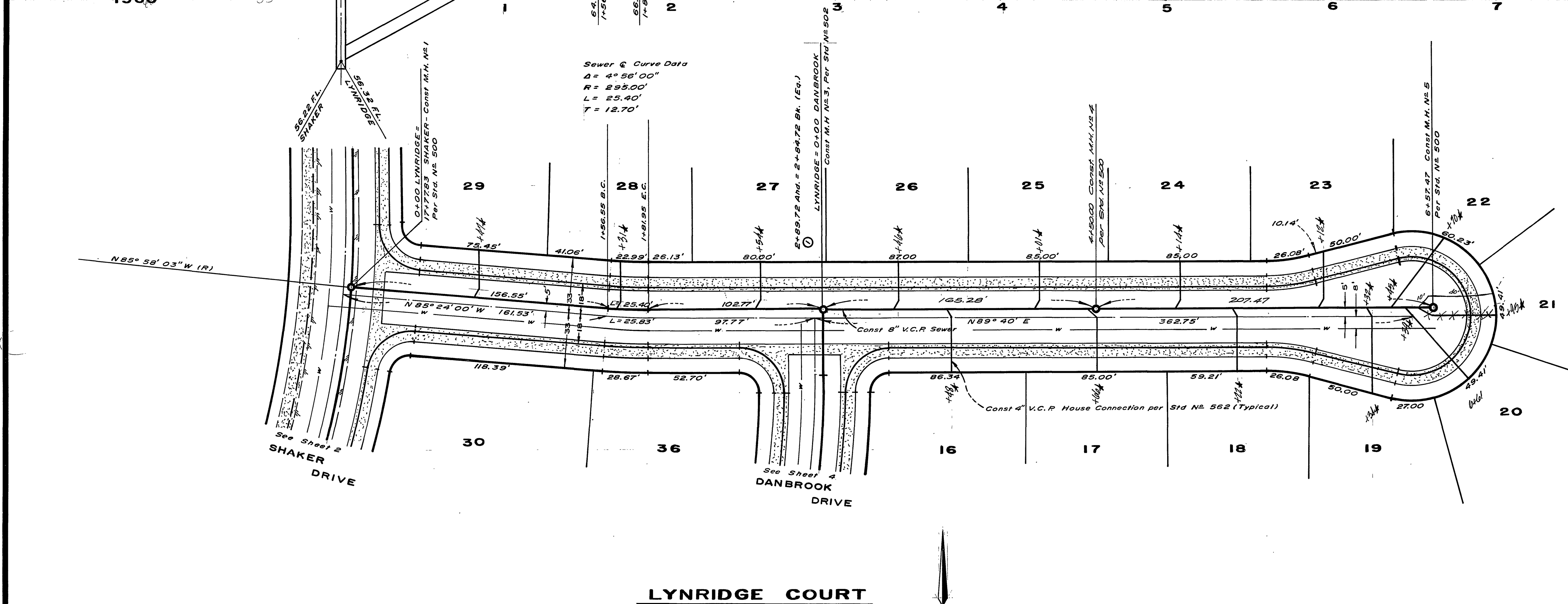
APPROVED BY: Chief Water Utility Engineer	ALBERT A. WEBB ASSOCIATES CIVIL ENGINEERS RIVERSIDE, CALIFORNIA APPROVED BY: DATE: 6/13/73 R.C.E. NO. 9876 BRATTAIN CONSTRUCTION CO.	CITY OF RIVERSIDE, CALIFORNIA DEPARTMENT OF PUBLIC WORKS APPROVED BY: OFFICE ENGINEER: PARK DEPARTMENT: TRAFFIC DIVISION: ASSISTANT CITY ENGINEER: DATE: 9-27-73	SEWER PLAN & PROFILE NETTLETON COURT SHAKER DRIVE STA. 16+48.25 TO STA. 19+85.84 TRACT 5137 PROJECT NO. 73-54 S-950 SHEET 2 OF 5 FILE NO. 73-54-B
	DESIGNED BY: D.R.B. DRAWN BY: D.R.B. CHECKED BY:	REVISIONS: DATE: 10-73	HORIZ. SCALE: 1" = 40' VERT. SCALE: 1" = 4'



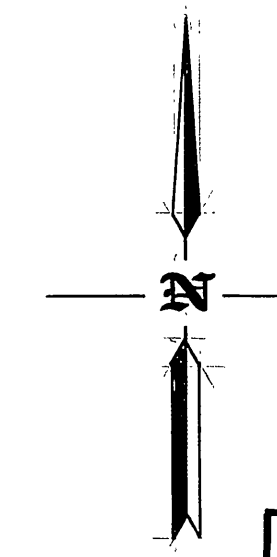
BENCH MARK:
 Chisled 'D' 1' North of Tract Bay, on West curb of Claridge Dr — Elevation = 1398.31 per A.A. Webb E.B. 1014/98 as shown on C/R plan 819

NOTE: See Sheet One for General Notes

Sewer & Curve Data
 Δs = 4° 58' 00"
 R = 295.00'
 L = 25.40'
 T = 12.70'



LYNRIDGE COURT



APPROVED BY
[Signature]
 Chief Water Utility Engineer

ALBERT A. WEBB ASSOCIATES
 CIVIL ENGINEERS
 RIVERSIDE, CALIFORNIA
 APPROVED BY *[Signature]*
 DATE 6/13/73 R.C.E. NO. 9876
 DESIGNED BY D.R.B. DRAWN BY D.R.B. CHECKED BY *[Signature]*

MARK	REVISIONS	DATE
1	ADD 4" V.C.R. M.H. NO. 3 TO E.N.W. 10-73	10-73
2	ADD 4" V.C.R. M.H. NO. 3 E.N.W. 10-73	10-73

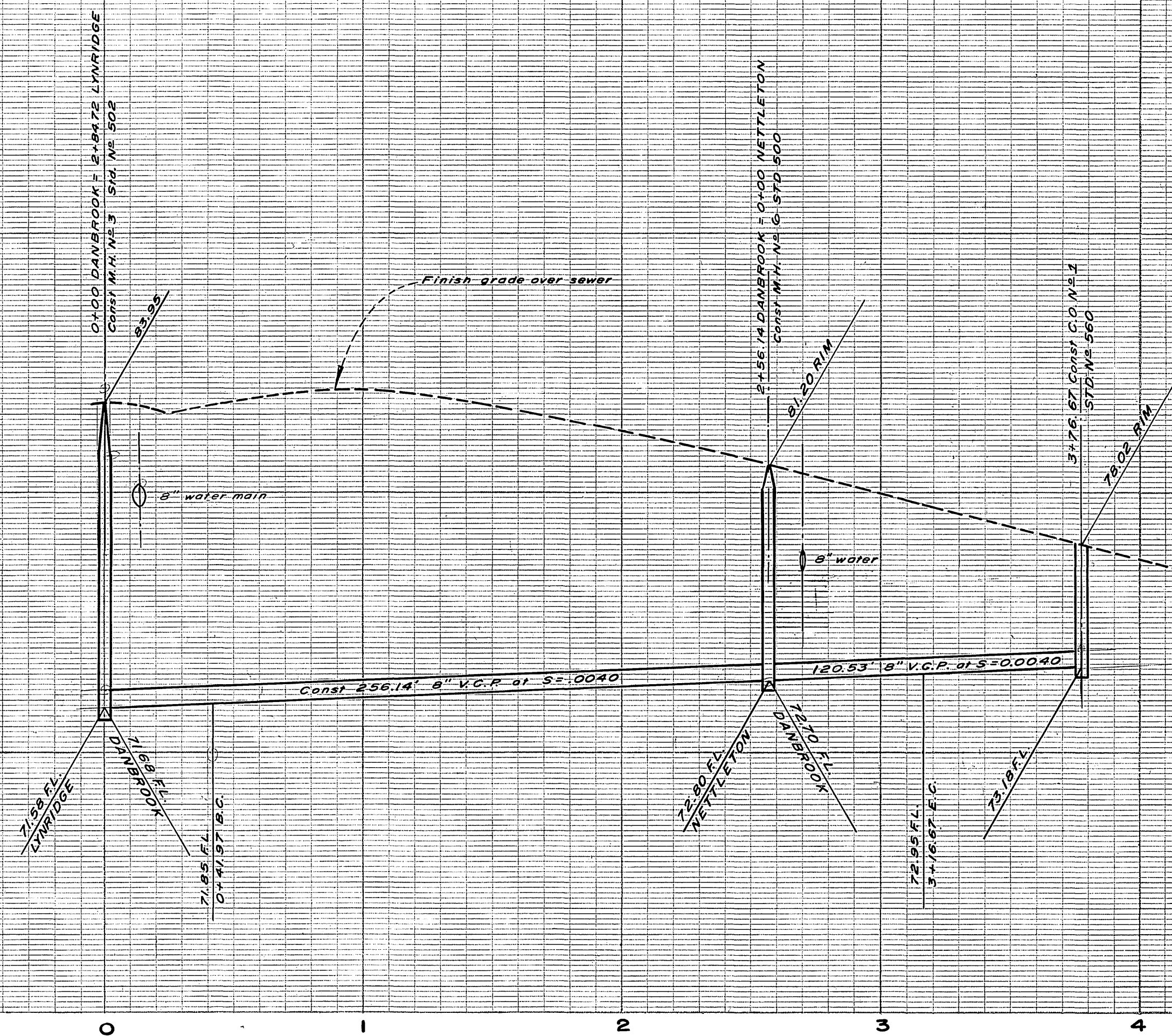
CITY OF RIVERSIDE, CALIFORNIA
 DEPARTMENT OF PUBLIC WORKS
 APPROVED BY *[Signature]*
 OFFICE ENGINEER
 PARK DEPARTMENT
 TRAFFIC DIVISION
 ASSISTANT CITY ENGINEER
 DATE 9-27-73

SEWER PLAN & PROFILE		PROJECT NO. 73-54
LYNRIDGE COURT		S-950
TRACT 5137		SHEET 3 OF 5
HORIZ. SCALE: 1" = 40'		VERT. SCALE: 1" = 4'
		FILE NO. 73-54-B

1390

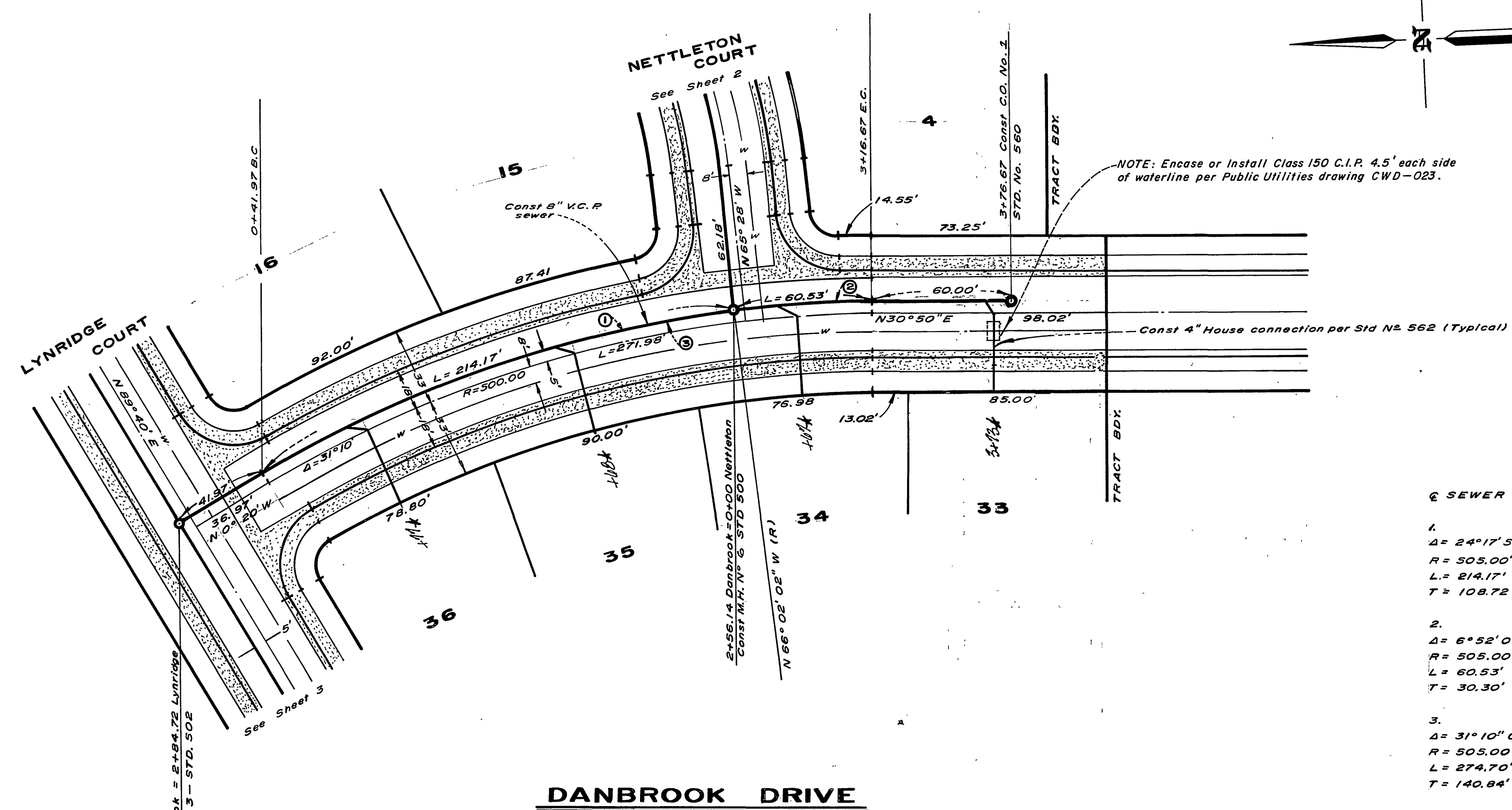
1380

1370



BENCH MARK:
 Chisled "G" 1' North of Tract Bdy, on West curb of Claridge Dr - Elevation =
 1398.31 per A.A. Webb E.B. 1014/28 - as shown on C/R plan S-819

71185-41197
 72-95-316



NOTE: See Sheet One for General Notes.

NOTE: Encase or Install Class 150 C.I.P. 4.5" each side of waterline per Public Utilities drawing CWD-023.

SEWER CURVE DATA -

- 1.
 $\Delta = 24^{\circ}17'58''$
 $R = 505.00'$
 $L = 214.17'$
 $T = 108.72'$
- 2.
 $\Delta = 6^{\circ}52'02''$
 $R = 505.00'$
 $L = 60.53'$
 $T = 30.30'$
- 3.
 $\Delta = 31^{\circ}10'00''$
 $R = 505.00'$
 $L = 274.70'$
 $T = 140.84'$

DANBROOK DRIVE

ALBERT A. WEBB ASSOCIATES
 CIVIL ENGINEERS
 RIVERSIDE, CALIFORNIA

APPROVED BY *[Signature]*
 DATE 6/13/73 R.C.E. NO. 9976

MARK	REVISIONS	APPR.	DATE

CITY OF RIVERSIDE, CALIFORNIA
 DEPARTMENT OF PUBLIC WORKS

APPROVED BY *[Signature]* DATE 9/27/73
 OFFICE ENGINEER
 PARK DEPARTMENT
 TRAFFIC DIVISION
 ASSISTANT CITY ENGINEER

SEWER PLAN & PROFILE

DANBROOK DRIVE

TRACT 5137

HORIZ. SCALE: 1" = 40'
 VERT. SCALE: 1" = 4'

PROJECT NO. 73-54

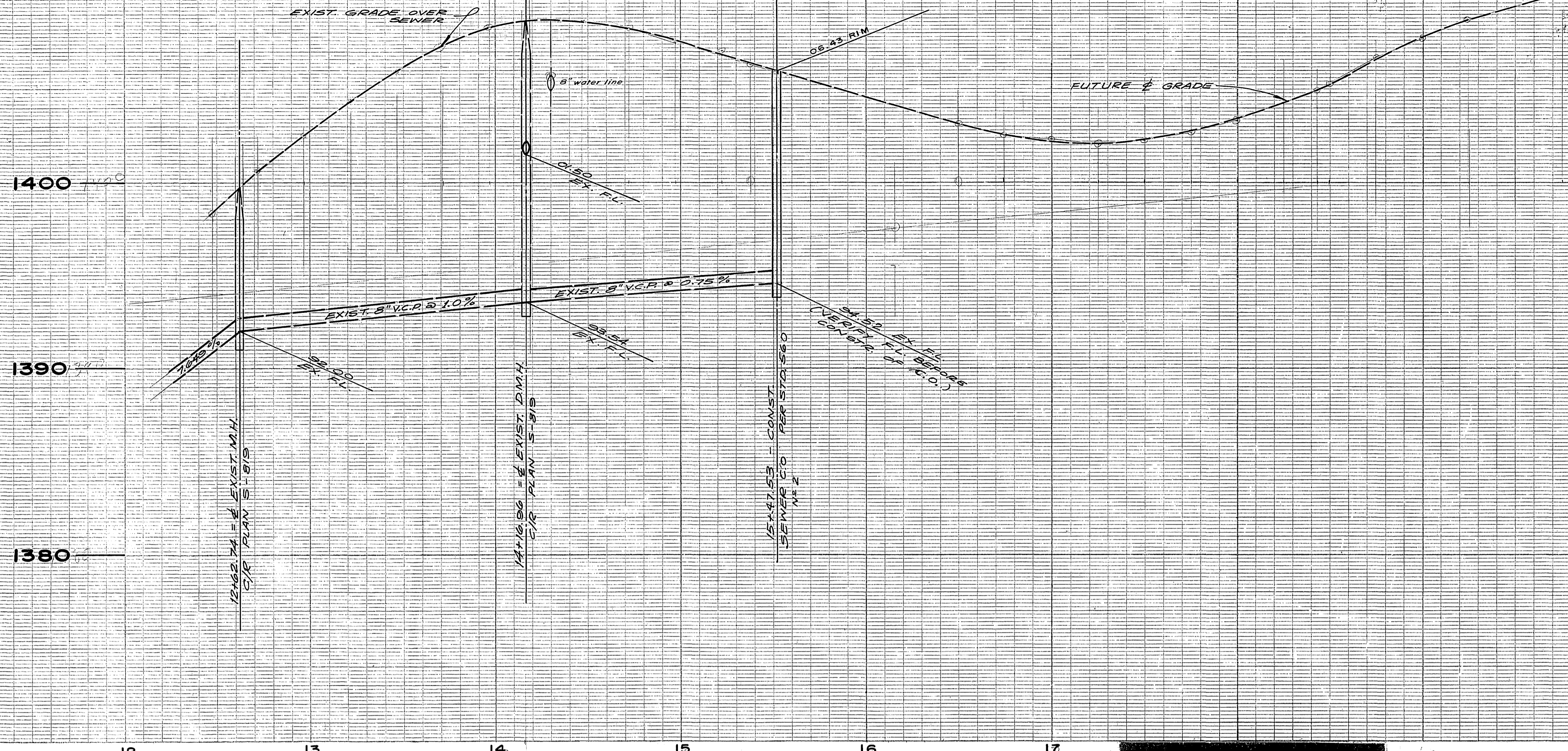
S-950

SHEET 4 OF 5

FILE NO. 73-54-B

APPROVED BY *[Signature]*
 Chief Water Utility Engineer

DESIGNED BY A.R.S. DRAWN BY A.R.S. CHECKED BY *[Signature]*



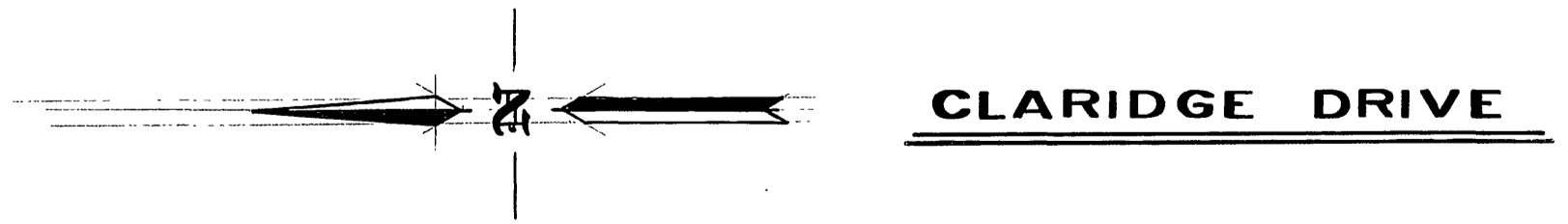
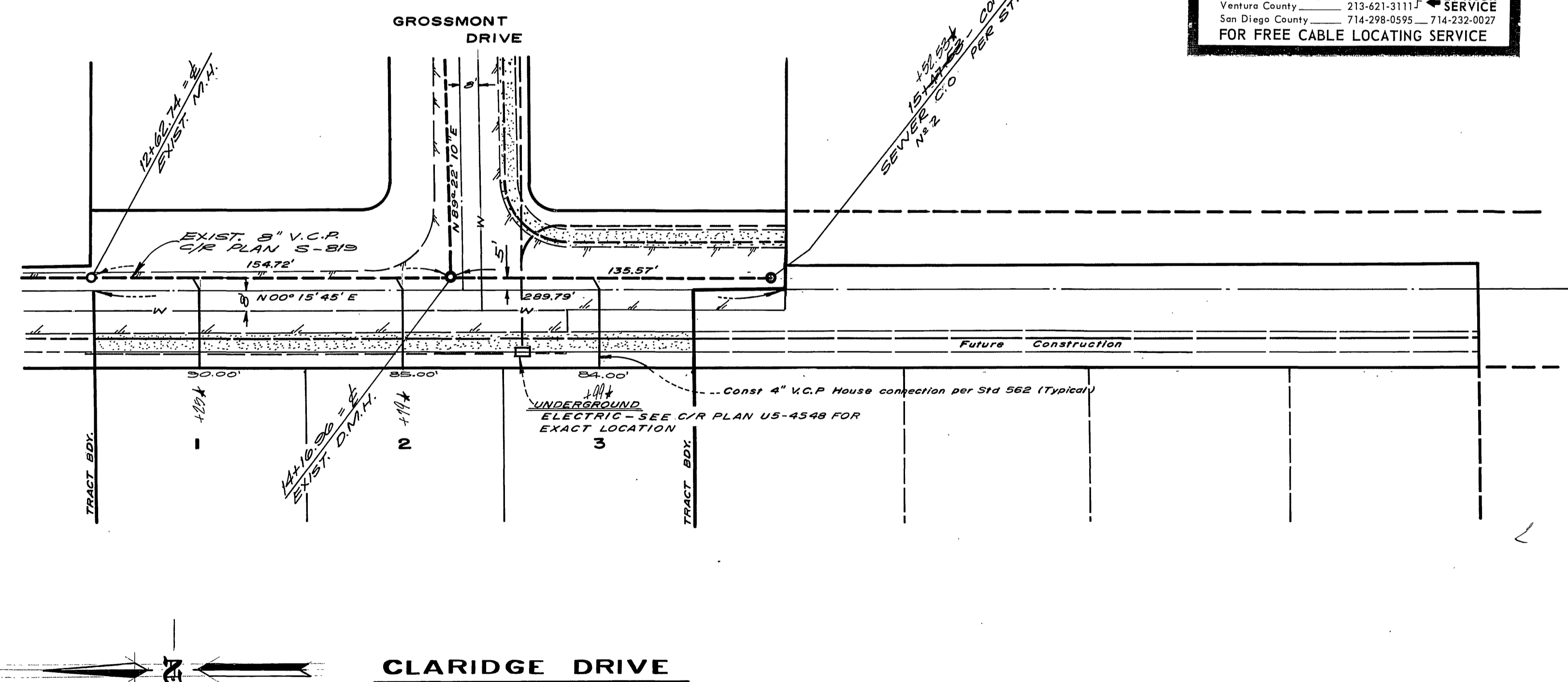
- CAUTION -
PACIFIC TELEPHONE
CABLES UNDERGROUND
 BEFORE EXCAVATING
 CALL COLLECT:

Orange County	714-633-0811	714-547-6606
Riverside County	714-684-0071	714-547-6606
Inyo County	714-684-0071	714-547-6606
San Bernardino County	714-684-0071	714-547-6606
Los Angeles County	213-621-3111	24 HOUR SERVICE
Ventura County	213-621-3111	24 HOUR SERVICE
San Diego County	714-298-0595	714-232-0027

FOR FREE CABLE LOCATING SERVICE

BENCH MARK:
 Chisled "D" 1' North of Tract Bdy on West curb of Claridge Dr. - Elevation = 1398.31 per A.A. Webb E.B. 10/4/98 as shown on C/R plan S-819

NOTE: See Sheet One for General Notes.



1. The engineer shall be responsible for the accuracy of the data furnished to him by the contractor.
 2. The contractor shall be responsible for the accuracy of the data furnished to him by the engineer.
 3. The contractor shall be responsible for the accuracy of the data furnished to him by the engineer.

APPROVED BY:
[Signature]
 Chief Water Utility Engineer

ALBERT A. WEBB ASSOCIATES
 CIVIL ENGINEERS
 RIVERSIDE, CALIFORNIA

APPROVED BY: *[Signature]*
 DATE: 6/13/73 R.C.E. NO. 9876
 1029 BRATTAIN CONSTRUCTION CO.

* 1/8" CURB D.B. 10/4

MARK	REVISIONS	APPR.	DATE

CITY OF RIVERSIDE, CALIFORNIA
 DEPARTMENT OF PUBLIC WORKS

APPROVED BY	BY	DATE
OFFICE ENGINEER	<i>[Signature]</i>	9/27/73
PARK DEPARTMENT		
TRAFFIC DIVISION		
ASSISTANT CITY ENG.		

SEWER PLAN & PROFILE	PROJECT NO. 73-54
CLARIDGE DRIVE STA. 12+62.74 TO STA. 15+52.53	S-950
TRACT 5137	SHEET 5 OF 5
HORIZ. SCALE: 1" = 40'	VERT. SCALE: 1" = 4'
FILE NO. 73-54-B	