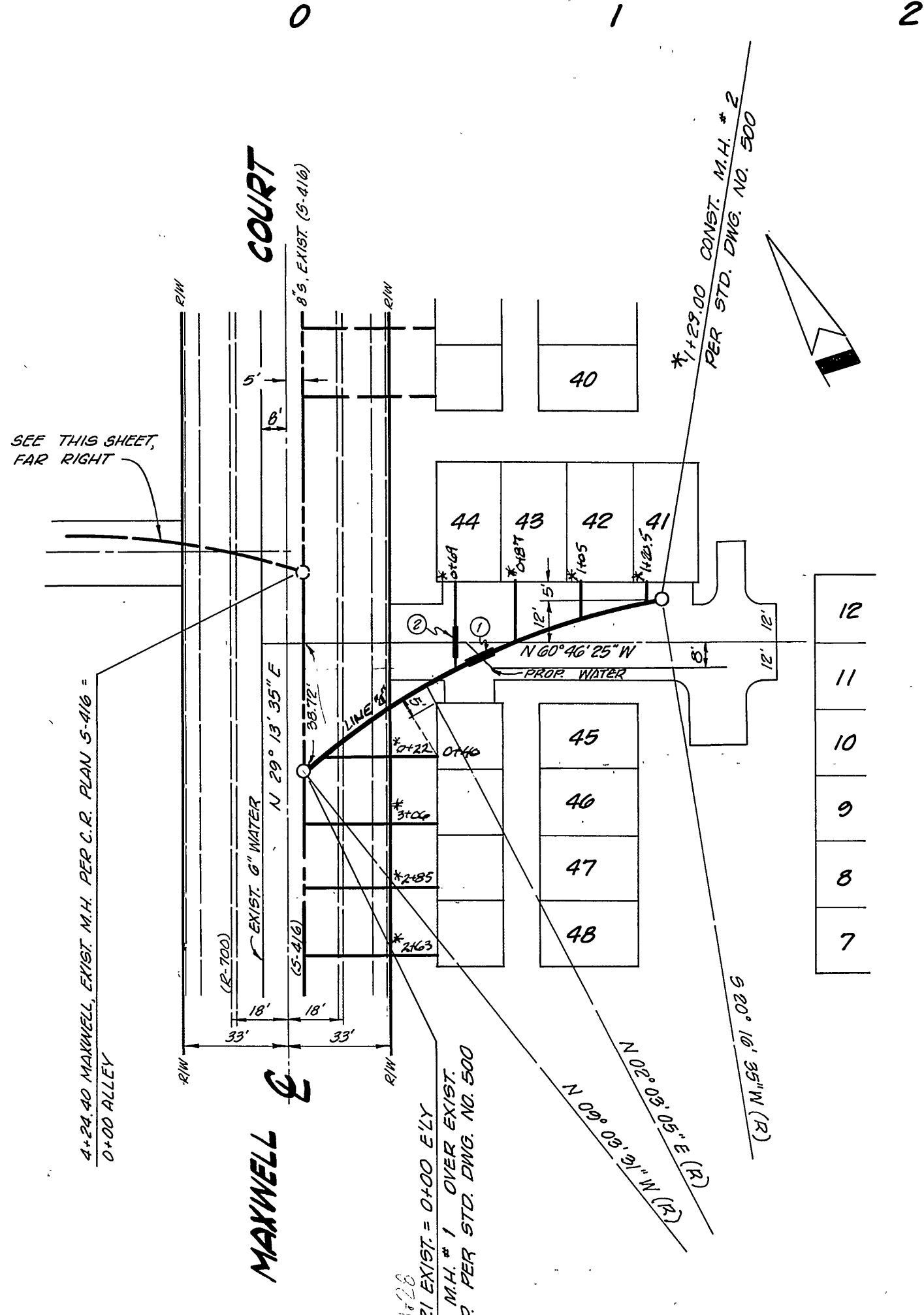
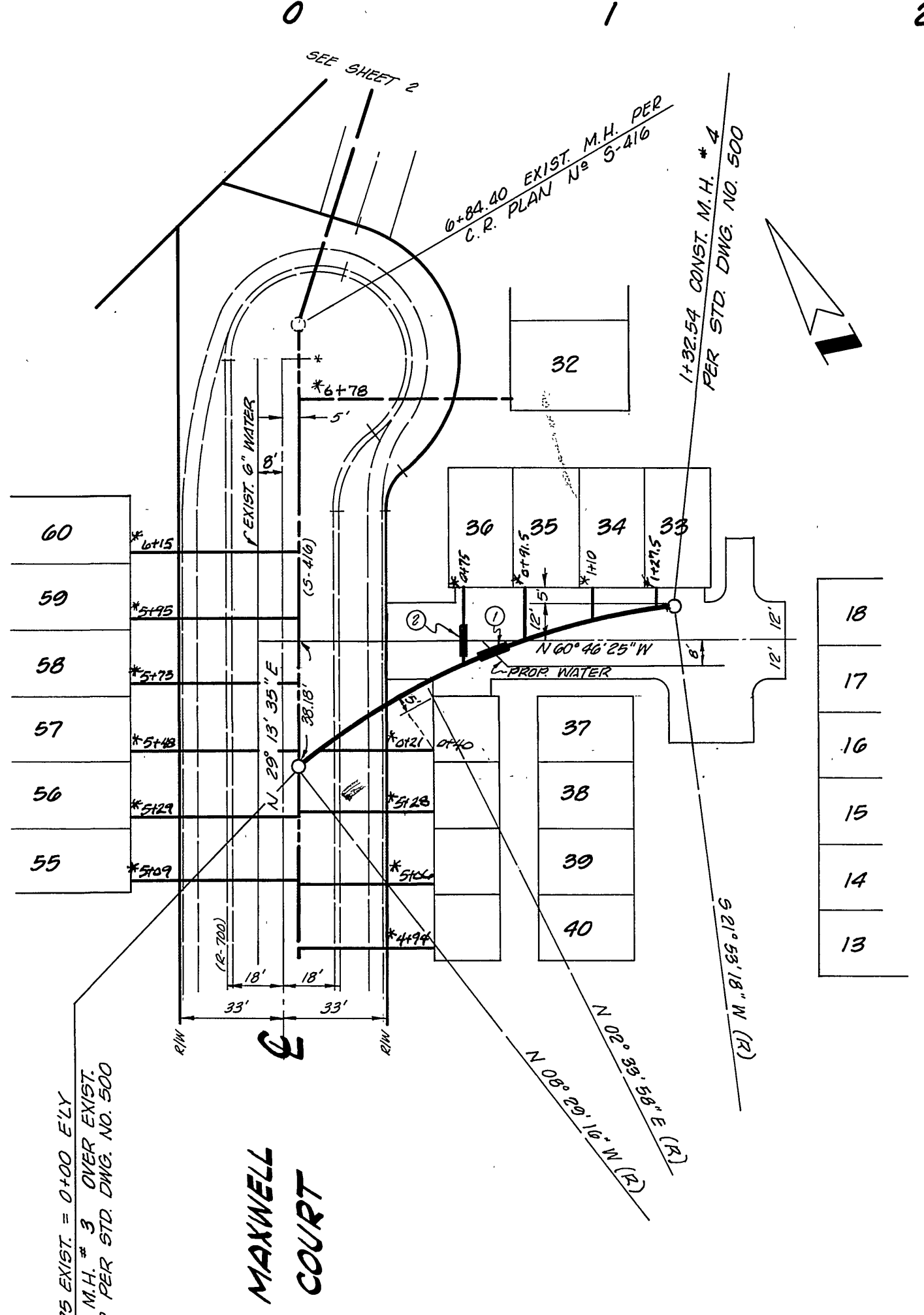


BENCH MARK: CITY B.M. 16-C
BRASS DISK STAMPED (16-C) AT THE
INTERSECTION OF PINE ST. AND
PALM AVE. (C.R.P. 735/42)
ELEV. 773.826

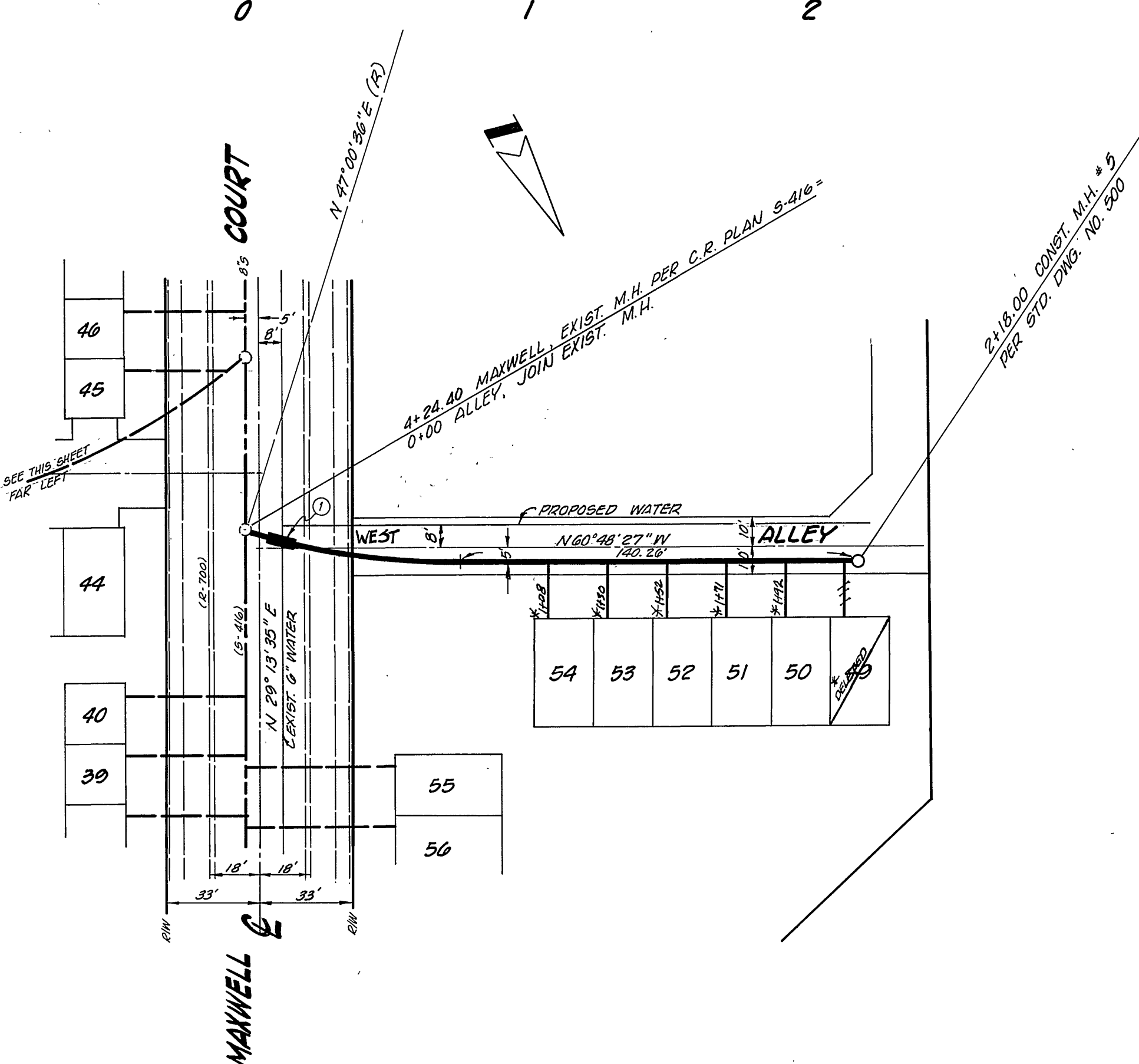
T.B.M. (THIS PROJECT ONLY): CHIZ. "D" AT M.O.C. CURB
AT NORTHEAST CORNER OF
TEJESQUITE AVE. AND
MAXWELL CT.
ELEV. 773.51



SEWER CURVE DATA		
R	Δ	L
250'	29° 20' 06"	128.00'



SEWER CURVE DATA		
R	Δ	L
250'	30° 28' 34"	132.54'



SEWER CURVE DATA		
R	Δ	L
230'	17° 49' 03"	77.74'

APPROVED BY:
[Signature] 8-16-73
CHIEF PUBLIC UTILITIES ENGR. DATE

- GENERAL NOTES:**
- All construction shall be in accordance with the Standard Specifications for Public Works Construction, 1973 Edition and Standard Drawings of the City of Riverside, Department of Public Works.
 - Location of laterals to be determined in the field at the direction of the Owner. Avoid conflict with proposed and/or existing facilities.
 - All sewer facilities NOT LOCATED IN PUBLIC R.W. ARE LOCATED WITHIN A "BLANKET EASEMENT OVER LOT 49, A COMMON LOT."

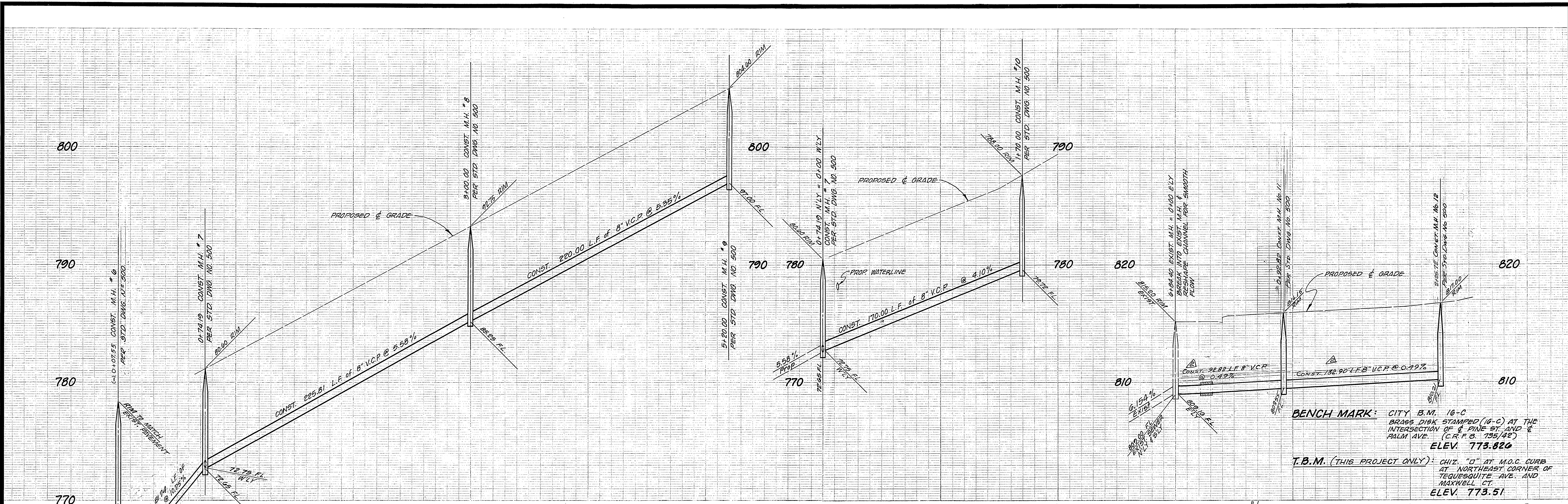
- CONSTRUCTION NOTES:**
- ENCASE SEWER WITH CONC. TYPE "C" 4.5' EACH SIDE OF WATERLINE AS PER P.U.D. - WATER STD. CWD-023.
 - ENCASE SEWER LATERAL 4.5' EACH SIDE OF WATERLINE WITH TYPE "C" CONC. ENCASUREMENT OR INSTALL CAST IRON LATERAL 4.5' EACH SIDE OF WATERLINE.

J. F. DAVIDSON ASSOCIATES
CIVIL ENGINEERS - SURVEYORS - PLANNERS
RIVERSIDE, CALIFORNIA
APPROVED BY: *[Signature]* DATE 8-10-73
R.E. No. 136391
W.O. 3811 FOR: VISTA DEVELOPMENT CORP. F.B.

MARK	REVISIONS	APPR.	DATE

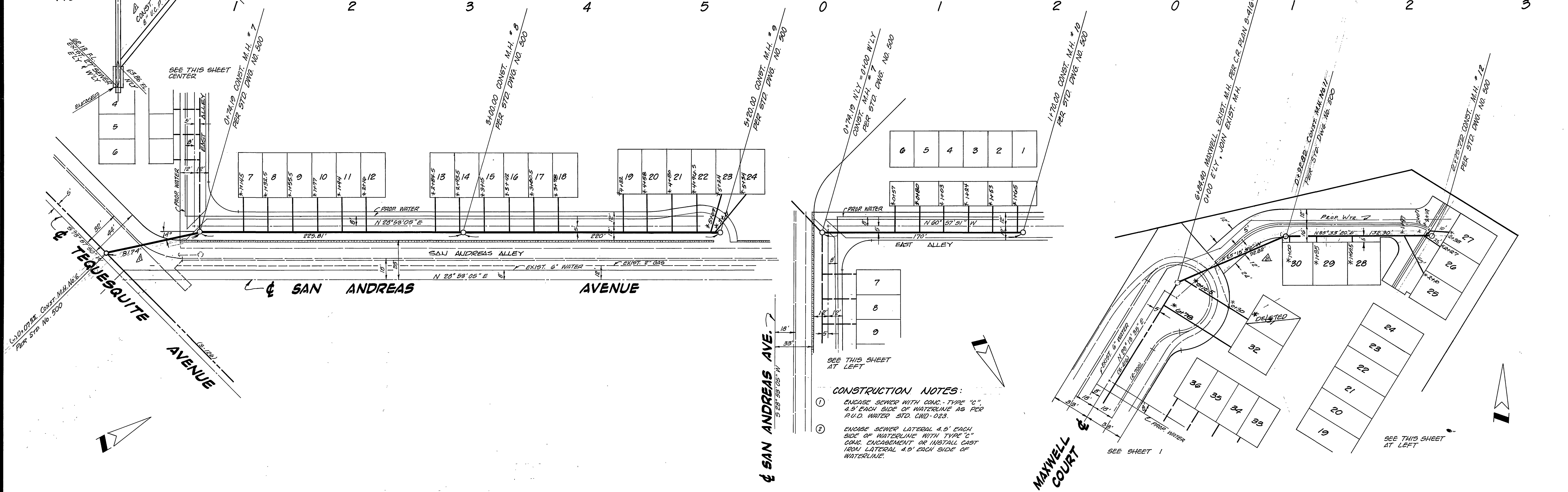
CITY OF RIVERSIDE, CALIFORNIA
DEPARTMENT OF PUBLIC WORKS
APPROVED BY: *[Signature]* DATE 8/27/73
OFFICE ENGINEER
PARK DEPARTMENT
TRAFFIC DIVISION
ASSISTANT CITY ENGR.

SEWER PLAN & PROFILE		PROJECT NO.
TRACT 5347		S-952
ALLEY AND PRIVATE DR.		
HORIZ. SCALE: 1" = 40'		FILE NO. 4467



BENCH MARK: CITY B.M. 16-C
BRASS DISK STAMPED (16-C) AT THE
INTERSECTION OF PINE ST. AND E.
PALM AVE. (C.R.P. 6735/42)
ELEV. 773.820

T.B.M. (THIS PROJECT ONLY): CHIZ. "D" AT M.O.C. CURB
AT NORTHEAST CORNER OF
TEQUESQUITE AVE. AND
MAXWELL CT.
ELEV. 773.51



CONSTRUCTION NOTES:

- ENCASE SEWER WITH CONC. TYPE "C" 4.5' EACH SIDE OF WATERLINE AS PER P.U.D. WATER STD. CHD-023.
- ENCASE SEWER LATERAL 4.5' EACH SIDE OF WATERLINE WITH TYPE "C" CONC. ENCASUREMENT OR INSTALL CAST IRON LATERAL 4.5' EACH SIDE OF WATERLINE.

J. F. DAVIDSON ASSOCIATES
CIVIL ENGINEERS - SURVEYORS - PLANNERS
RIVERSIDE, CALIFORNIA

APPROVED BY: *Robert S. Biggs* DATE: 8-10-73
R.E. No. 18089

W.O. 3811 FOR: VISTA DEVELOPMENT CORP. F.B.

* "AS BUILT" 11/18/74 E.J.N.

REVISIONS:

DESIGNED BY: DRAWN BY: R.G. CHECKED BY:

CITY OF RIVERSIDE, CALIFORNIA
DEPARTMENT OF PUBLIC WORKS

APPROVED BY: *[Signature]* DATE: 8/27/73
OFFICE ENGINEER
PARK DEPARTMENT
TRAFFIC DIVISION
ASSISTANT CITY ENG.

SEWER PLAN & PROFILE

TRACT 5347
PRIVATE STREET
AND DRIVES

PROJECT NO. **9-952**

SHEET **2** OF **2**

HORIZ. SCALE: 1" = 40' VERT. SCALE: 1" = 4'

FILE NO. 4467

APPROVED BY: *[Signature]* DATE: 8-16-73
CHIEF PUBLIC UTILITIES ENG.