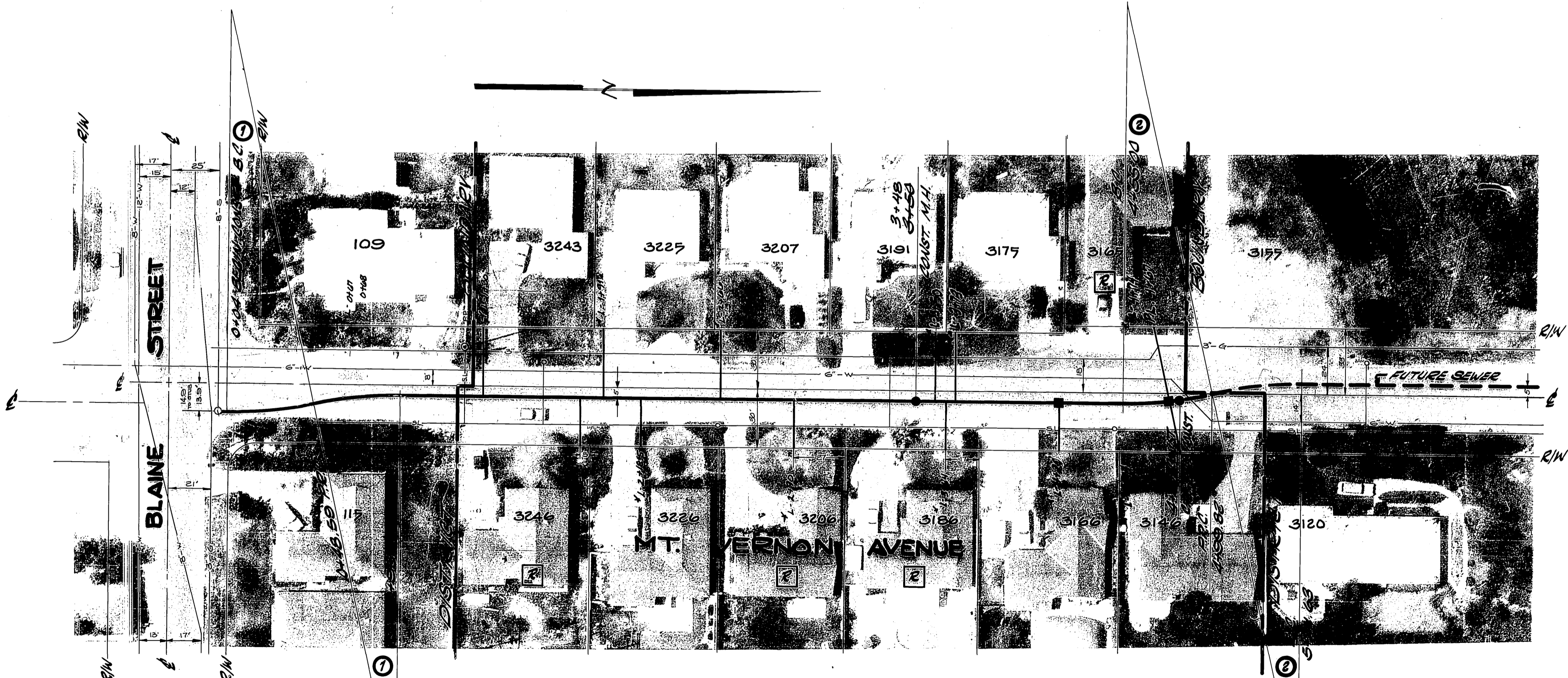


- GENERAL NOTES**
- CONSTRUCTION SHALL BE IN ACCORDANCE WITH STANDARD SPECIFICATIONS FOR PUBLIC WORKS CONSTRUCTION, 1983 EDITION.
 - THE FOLLOWING STANDARD DRAWINGS APPLY:
 NO. 455 FOR PIPE BEDDING
 NO. 456 FOR TRENCH BACKFILL
 NO. 500 FOR MANHOLE
 NO. 501 FOR MANHOLE CASTING
 NO. 502 FOR CLEANOUT
 NO. 503 FOR CHIMNEYS
 NO. 504 FOR SEWER LATERALS
 - AN \square INDICATES THAT PROPERTY OWNER HAS REQUESTED LOCATION OF LATERAL AT LOCATION SHOWN. LETTER IS IN FILE.

F.B. 962/61
 ELEV 12/8.43
 B.M. P.M. NAIL IN CURB N.E.
 CORNER OF BLAINE & MT. VERNON



CURVE DATA

| | R | Δ | L | T |
|---|------|-----------|--------|--------|
| ① | 200' | 12°46'26" | 44.88' | 22.39' |
| ② | 200' | 12°50'18" | 44.82' | 22.50' |

"AS BUILT" P.L. 11/74

| | | | | |
|--|-------------|---|--------------------------|--|
| CITY OF RIVERSIDE, CALIFORNIA PUBLIC WORKS DEPARTMENT | | MT. VERNON AVENUE ASSESSMENT DISTRICT (SEWER) | | ACCOUNT No. 84-451-640 DRAWING NUMBER S-953 |
| APPROVED BY | BY | DATE | APPROVED BY | |
| PRINCIPAL ENGINEER | [Signature] | 1/18 | DIRECTOR OF PUBLIC WORKS | |
| DESIGNED BY | DRAWN BY | CHECKED BY | DATE | SCALE: HORIZ: 1"=40' VERT: 1"=4' |