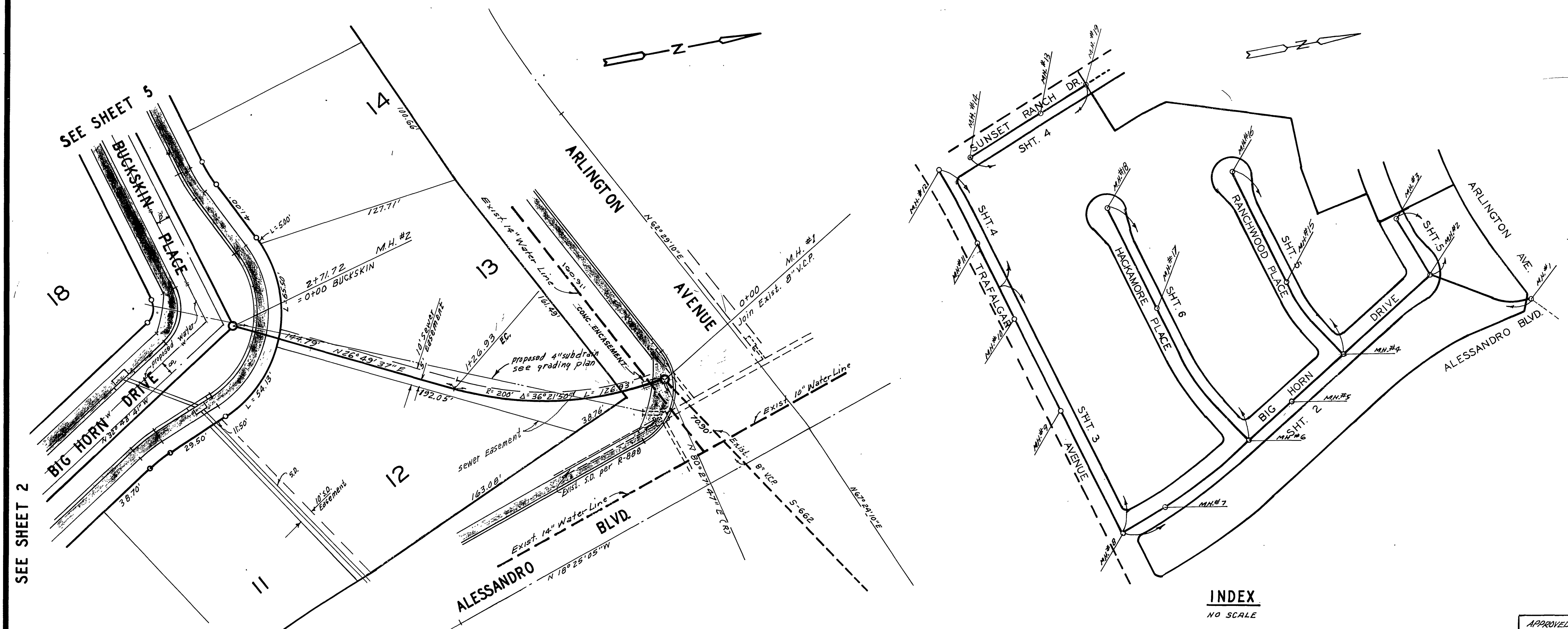


**BENCH MARK**

Elev. 1136.542  
 C/R B.M. No. 07-C 7x8 nail on curb  
 return S.E. corner Chicago, Arlington  
 and Alessandro.

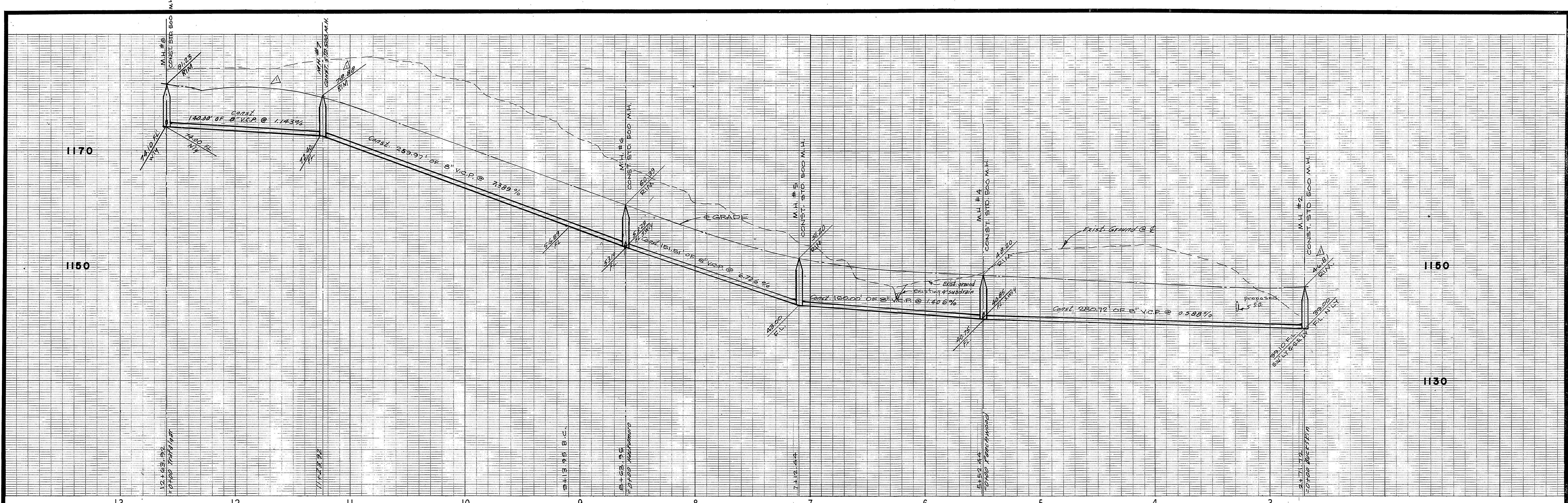
**GENERAL NOTES**

1. Construction shall be in accordance with the Standard Specifications for Public Works Construction, 1973 Edition, and City of Riverside Standard Drawings.
2. Location of wyes and laterals to be determined at the direction of the owner.
3. Manhole frames and covers shall be set by sewer contractor after final paving of street.
4. Prior to construction of sewer, contractor shall expose existing sewer at proposed M.H.#1 and Sta. 8+34.61 on Sunset Ranch Drive and contact engineer who will verify existing location and elevation. This shall be done before proceeding with any construction shown on these plans.
5. The location of the existing subdrains shown on these plans has not been verified. Contractor shall expose all drains and notify engineer for verification of location and elevation before starting construction on any street crossed by a subdrain.
6. All profiles labeled existing ground are actually original ground.

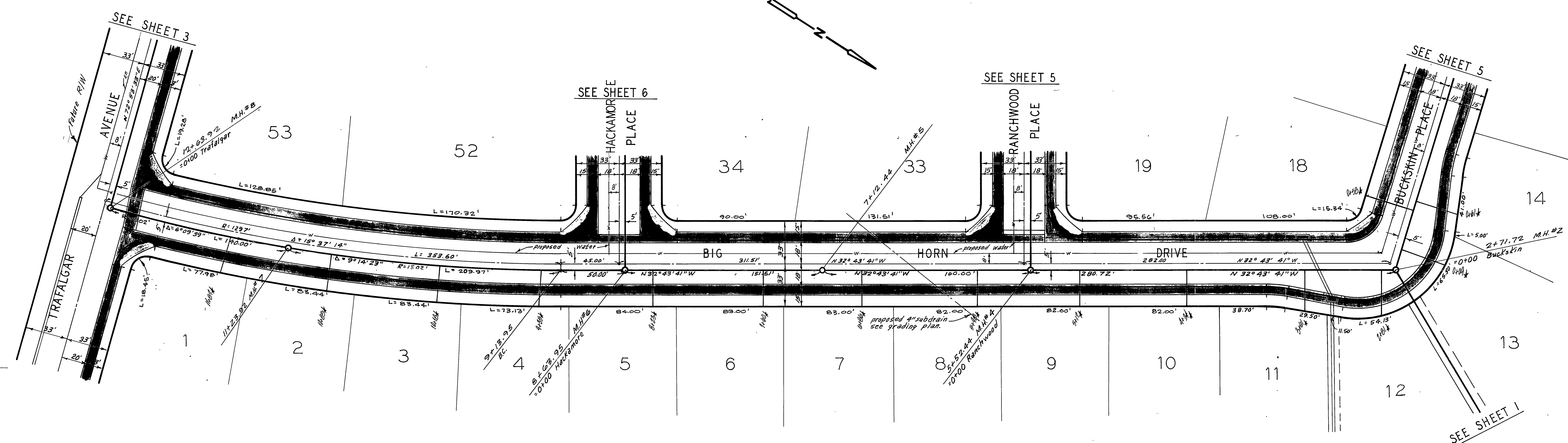


**INDEX**  
NO SCALE

ALBERT A. WEBB ASSOCIATES CIVIL ENGINEERS RIVERSIDE, CALIFORNIA APPROVED BY <i>Emil H. Webb</i> DATE 6/12/73 R.C.E. NO. 9876		APPROVED BY <i>Howard A. Cremon</i> 10-11-73 CHIEF WATER UTILITY ENGINEER DATE		CITY OF RIVERSIDE, CALIFORNIA DEPARTMENT OF PUBLIC WORKS APPROVED BY <i>[Signature]</i> PARK DEPARTMENT TRAFFIC DIVISION ASSISTANT CITY ENGINEER DATE 10-16-73		SEWER PLAN AND PROFILE INDEX EASEMENT TRACT 4270 HORIZ. SCALE: 1" = 40' VERT. SCALE: 1" = 8'		PROJECT NO. S-955 SHEET 1 OF 6 FILE NO. 71-56-B	
DESIGNED BY B.E.L. DRAWN BY _____ CHECKED BY <i>[Signature]</i>		MARKS: added ex. fl. at M.H. #1 ENW revised manhole elev. ENW on 10/16/73		REVISIONS: _____ DATE _____		DATE 10-16-73		PROJECT NO. S-955 SHEET 1 OF 6 FILE NO. 71-56-B	



**BENCH MARK**  
 Elev. 1136.542 C/R B.M. No. G-7-C, P.K. nail on curb return S.E. corner Chicago, Arlington & Alessandro.

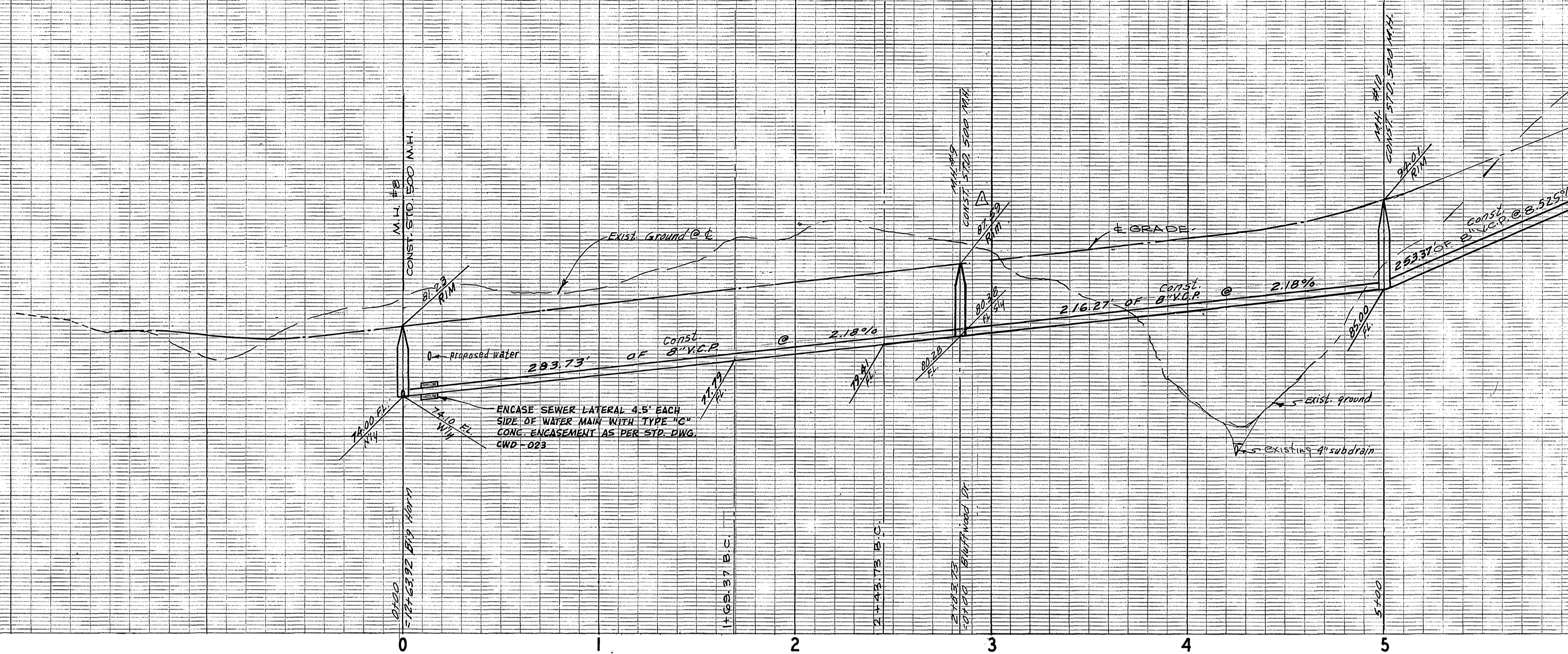


See sheet 1 of 6 for General and construction Notes.

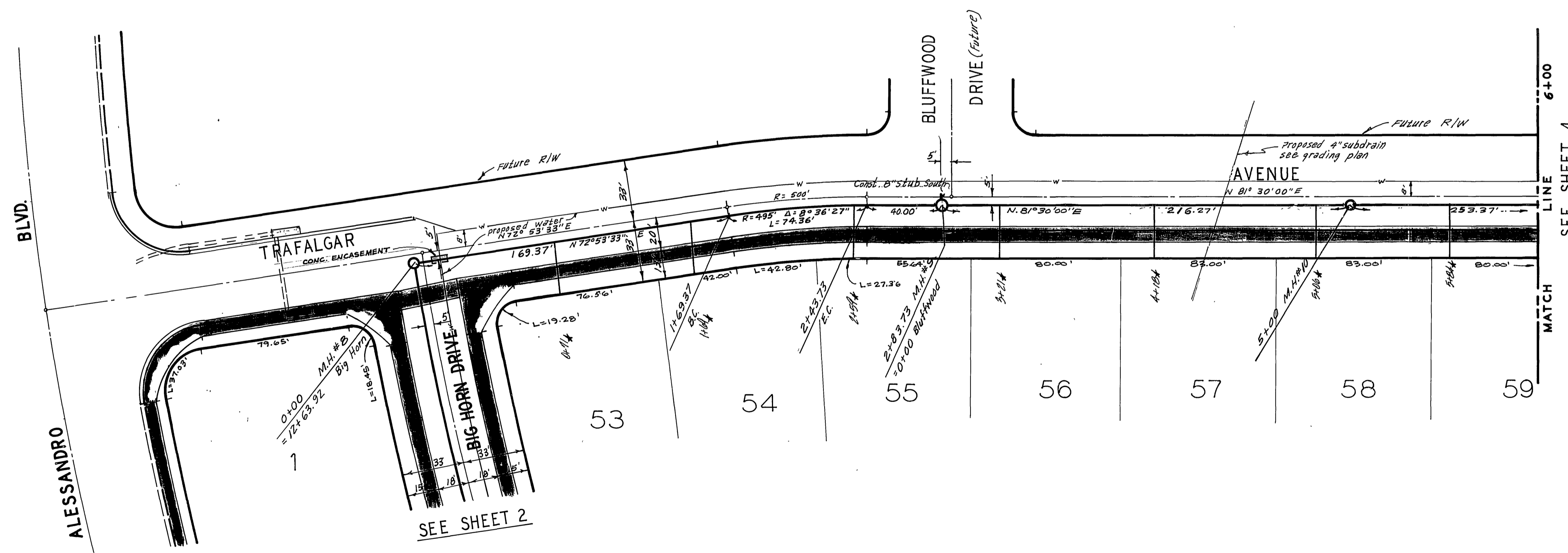
ALBERT A. WEBB ASSOCIATES CIVIL ENGINEERS RIVERSIDE, CALIFORNIA APPROVED BY <i>Albert A. Webb</i> DATE 6/12/73 R.C.E. NO. 9876	APPROVED BY <i>Howard L. O'Leary</i> 10-11-73 CHIEF WATER UTILITY ENGINEER DATE	CITY OF RIVERSIDE, CALIFORNIA DEPARTMENT OF PUBLIC WORKS		PROJECT NO. <b>S-955</b>
		APPROVED BY <i>[Signature]</i> OFFICE ENGINEER DATE 10/10/73 TRAFFIC DIVISION ASSISTANT CITY ENGINEER DATE 10/16/73	APPROVED BY <i>[Signature]</i> DIRECTOR OF PUBLIC WORKS	SEWER PLAN AND PROFILE <b>BIG HORN DRIVE</b> TRACT 4270
DESIGNED BY B.E.L. DRAWN BY [Signature] CHECKED BY [Signature]		HORIZ. SCALE: 1" = 40' VERT. SCALE: 1" = 8'		

1190

1190

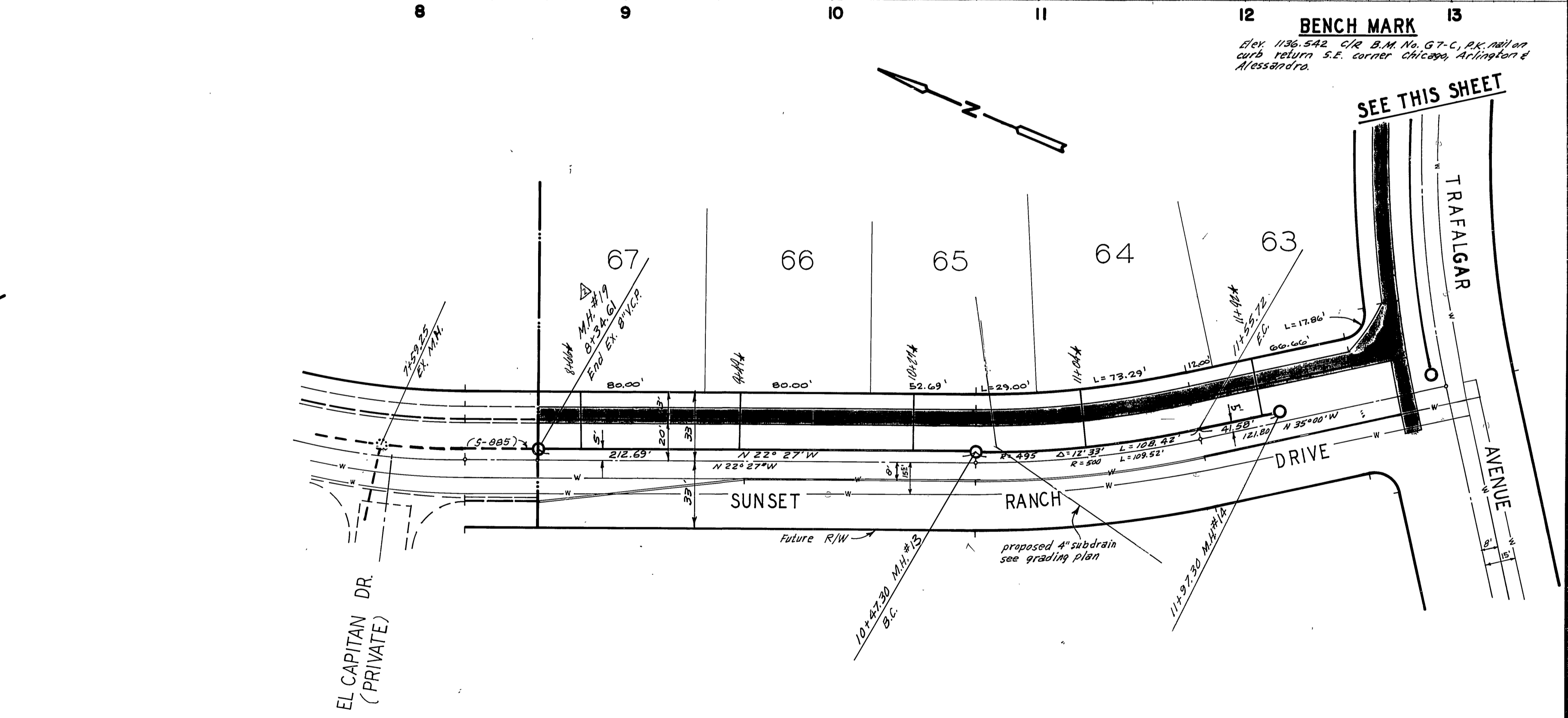
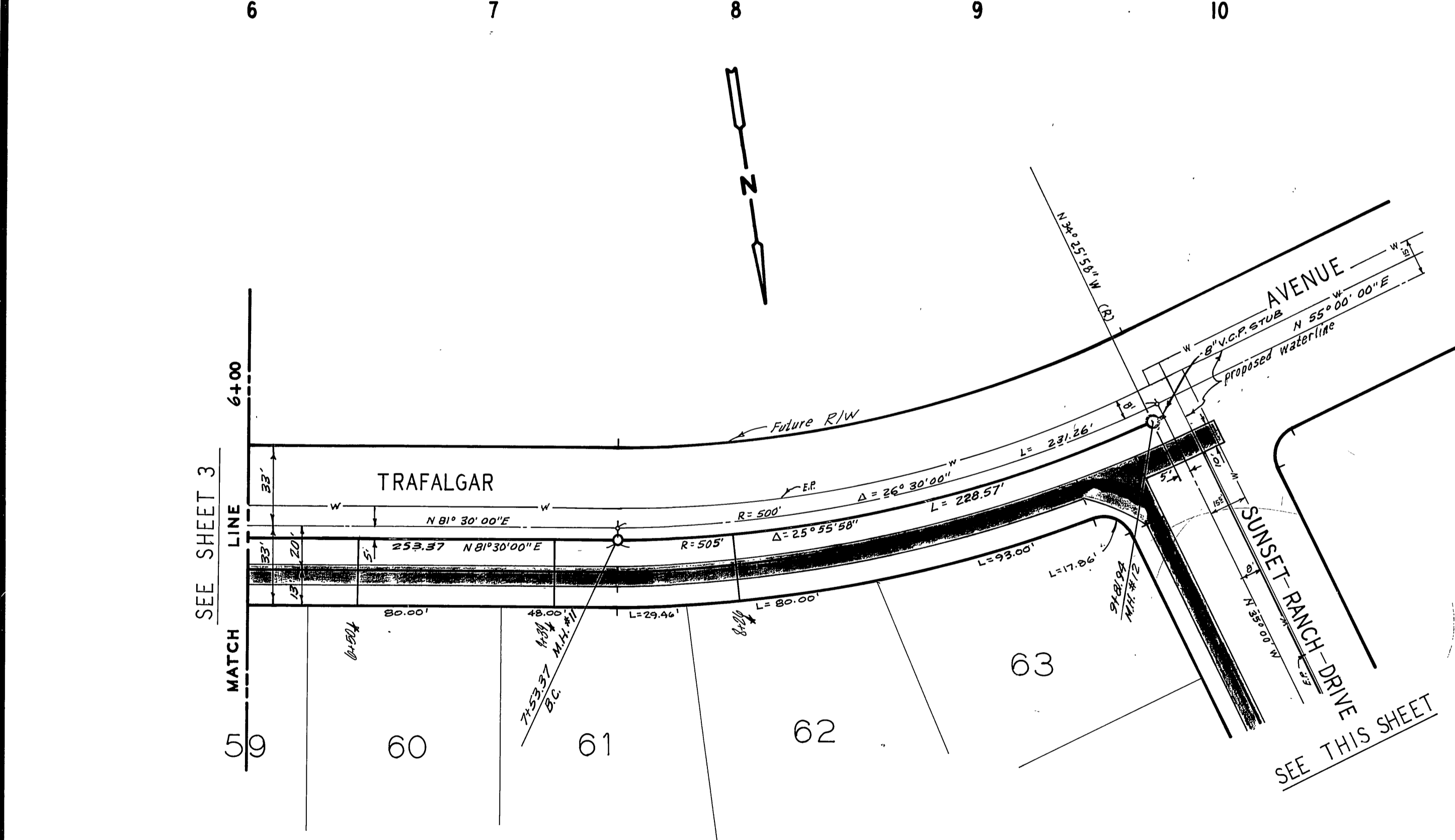
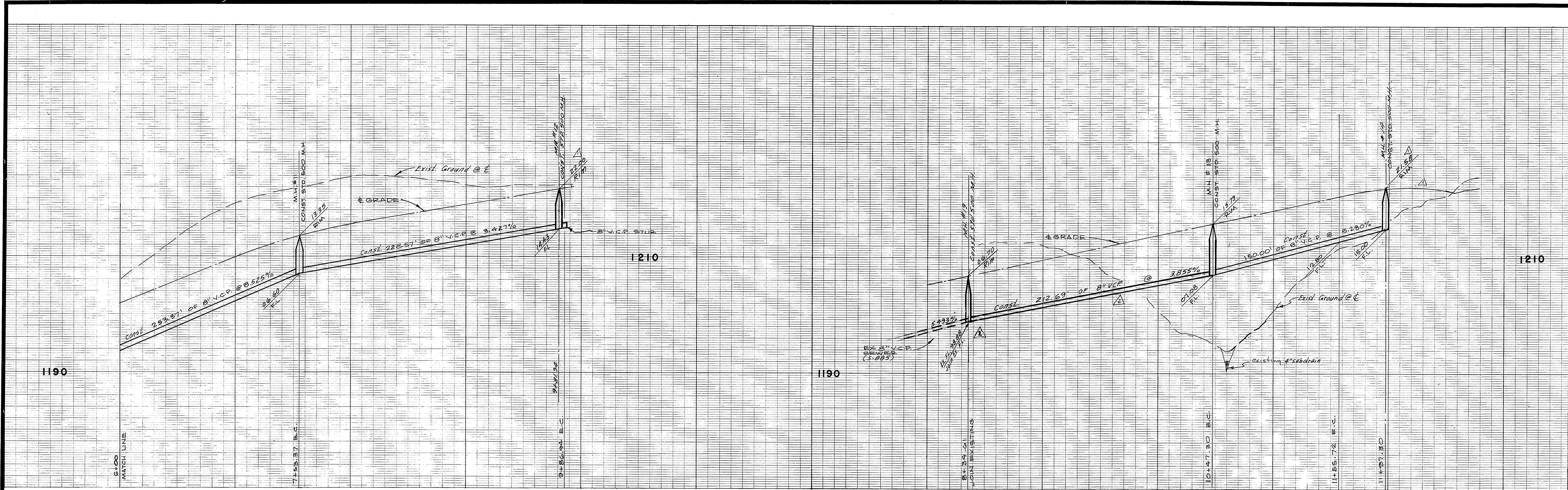


**BENCH MARK**  
 Elev. 1196.542 C.R. B.M. No. G-7-C, P.K. Mill on  
 curb return S.E. corner Chicago, Arlington &  
 Alessandro.



see sheet 1 of 6 for General and  
 construction Notes.

ALBERT A. WEBB ASSOCIATES CIVIL ENGINEERS RIVERSIDE, CALIFORNIA APPROVED BY <i>Albert A. Webb</i> DATE 6/12/73 P.C.E. NO. 9876		APPROVED BY <i>Howard K. Crown</i> 10-11-73 CHIEF WATER UTILITY ENGINEER DATE		CITY OF RIVERSIDE, CALIFORNIA DEPARTMENT OF PUBLIC WORKS APPROVED BY <i>[Signature]</i> OFFICE ENGINEER BY DATE PARK DEPARTMENT TRAFFIC DIVISION ASSISTANT CITY ENGINEER DATE 10-16-73		SEWER PLAN AND PROFILE TRAFALGAR AVENUE TRACT NO. 4270 HORIZ. SCALE: 1" = 40' VERT. SCALE: 1" = 8'		PROJECT NO. S-955 SHEET 3 OF 6 FILE NO. 71-56-B	
DESIGNED BY B.E.L. DRAWN BY CHECKED BY		REVISIONS		DATE		DATE 10-16-73		DATE 10-16-73	



**BENCH MARK**  
 D.E. 1136.542 C.R. B.M. No. G7-C, Rk. Mill on curb return S.E. corner Chicago, Arlington & Alessandro.

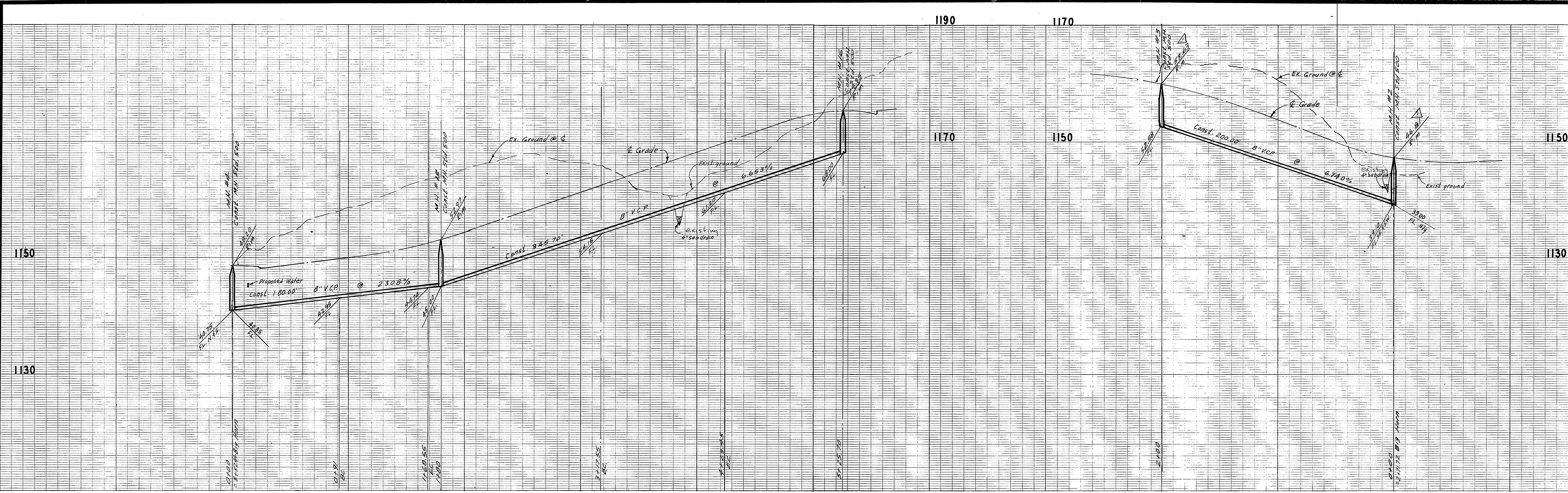
SEE SHEET 3  
 MATCH LINE  
 59

SEE THIS SHEET

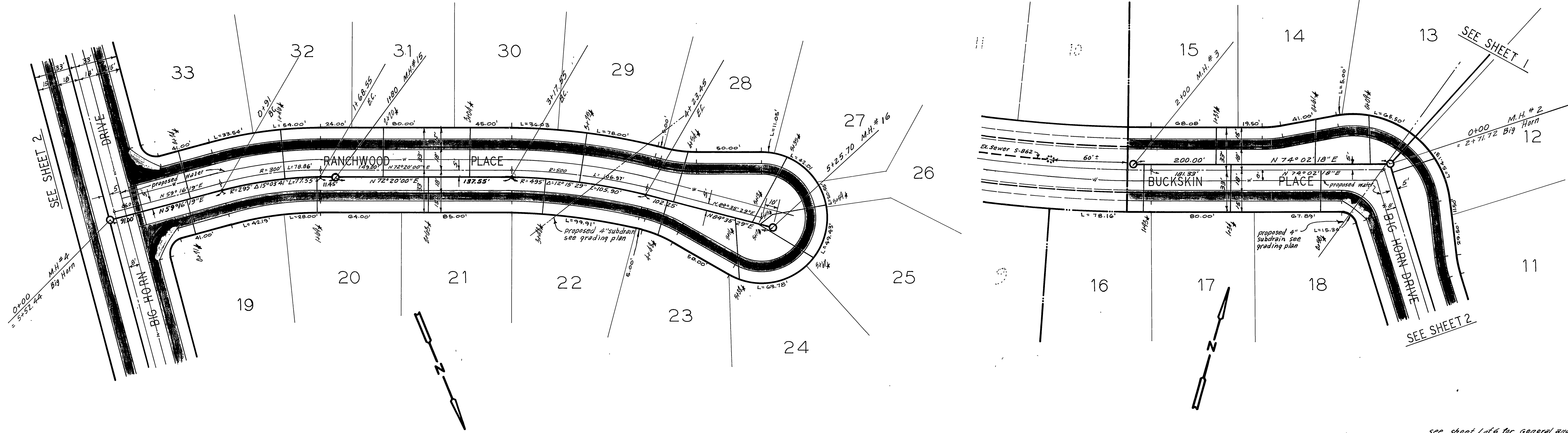
SEE THIS SHEET

See sheet 1 of 6 for General and Construction Notes.

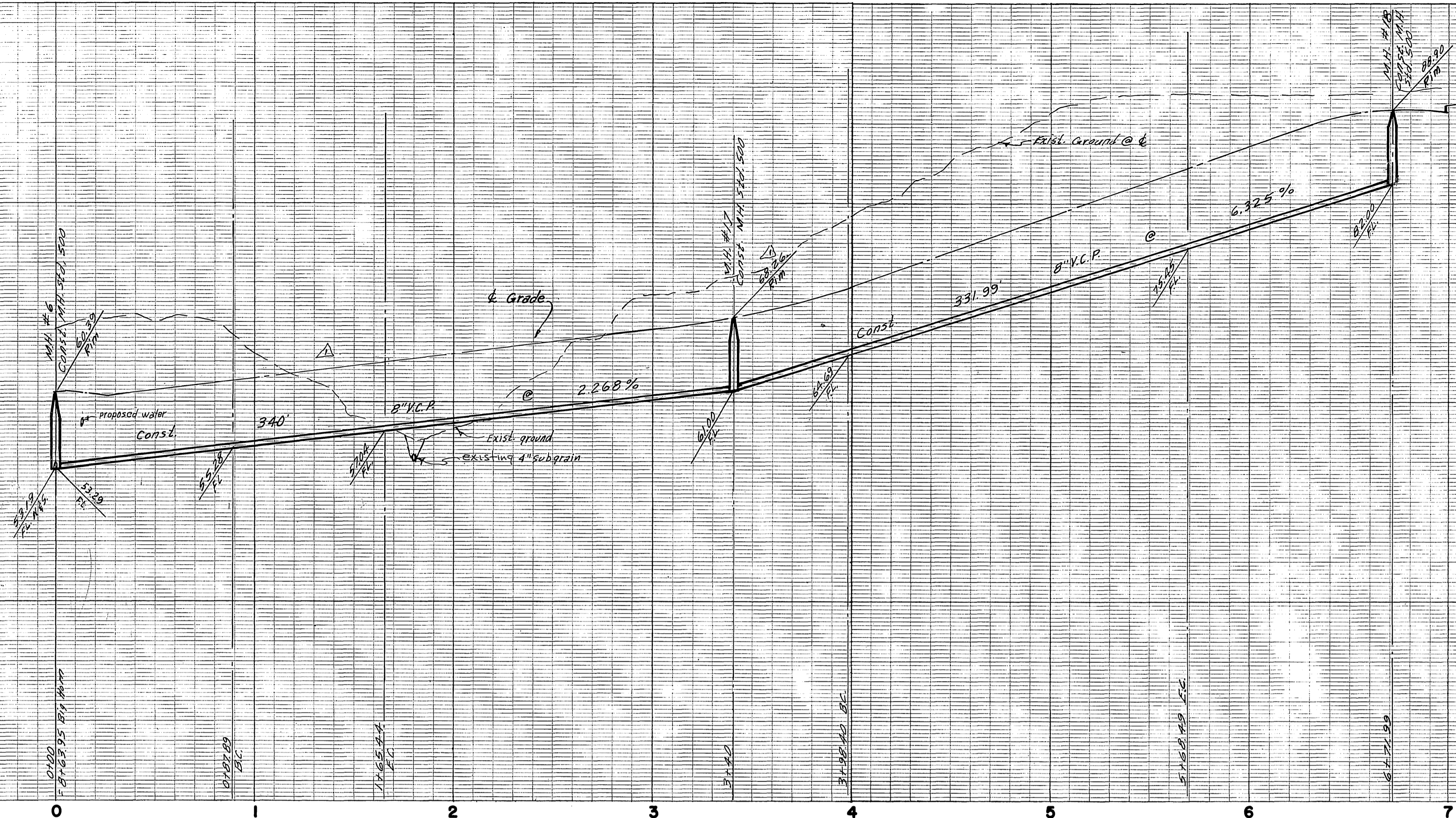
ALBERT A. WEBB ASSOCIATES CIVIL ENGINEERS RIVERSIDE, CALIFORNIA APPROVED BY <i>[Signature]</i> DATE <i>6/12/73</i> R.C.E. NO. 9876	* AS BUILT 12.10.74 APPROVED BY <i>[Signature]</i> OFFICE ENGINEER PARK DEPARTMENT TRAFFIC DIVISION ASSISTANT CITY ENG.	APPROVED BY <i>[Signature]</i> CHIEF WATER UTILITY ENGINEER DATE 10-11-73	SEWER PLAN AND PROFILE TRAFALGAR AVENUE SUNSET RANCH DRIVE TRACT NO. 4270	PROJECT NO. S-955 SHEET 4 OF 6 FILE NO. 71-56-B
		DESIGNED BY BEL DRAWN BY CHECKED BY	DATE 10-16-73 HORIZ. SCALE: 1" = 40' VERT. SCALE: 1" = 8'	TRACT NO. 4270



**BENCHMARK**  
 ELEV. 1136.542 O.R. B.M. No. G.T.C. P.K. 1011 on  
 curb return S.E. corner Chicago, Arlington &  
 Alessandro.



ALBERT A. WEBB ASSOCIATES CIVIL ENGINEERS RIVERSIDE, CALIFORNIA APPROVED BY <i>[Signature]</i> DATE 6/12/73 R.C.E. NO. 9876	DESIGNED BY BEL DRAWN BY CHECKED BY	APPROVED BY <i>[Signature]</i> 10-11-73 CHIEF WATER UTILITY ENGINEER DATE	<b>CITY OF RIVERSIDE, CALIFORNIA</b> <b>DEPARTMENT OF PUBLIC WORKS</b>	<b>SEWER PLAN AND PROFILE</b> <b>BUCKSKIN PLACE</b> <b>RANCHWOOD PLACE</b> <b>TRACT NO. 4270</b>	PROJECT NO. <b>S-955</b> SHEET 5 OF 6 FILE NO. 71-56-B
	REVISIONS MARK REVISIONS APPR. DATE REVISION MAH #2 & 3 Rim Elev. S.W. on 10/16/73 MARK REVISIONS APPR. DATE REVISION MAH #2 & 3 Rim Elev. S.W. on 10/16/73	APPROVED BY <i>[Signature]</i> OFFICE ENGINEER PARK DEPARTMENT TRAFFIC DIVISION ASSISTANT CITY ENG. DATE 10-16-73	APPROVED BY <i>[Signature]</i> DIRECTOR OF PUBLIC WORKS	HORIZ. SCALE: 1" = 40' VERT. SCALE: 1" = 8'	SEE SHEET 1 SEE SHEET 2



**BENCH MARK**

Elev. 1186.542 C/R B.M. No. 67-C, P.K. on 10' curb return S.E. corner Chicago, Arlington & Alessandro.

