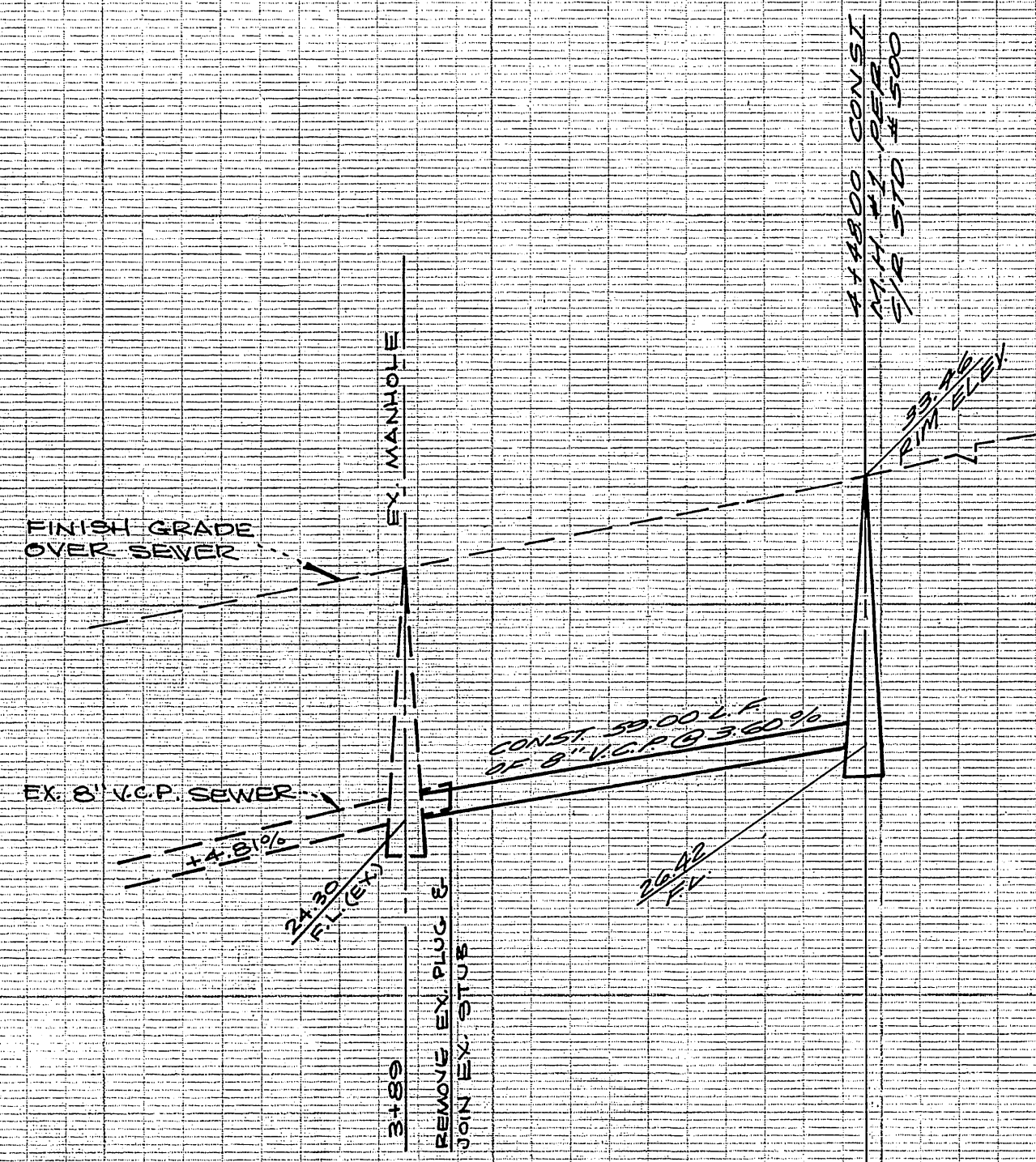


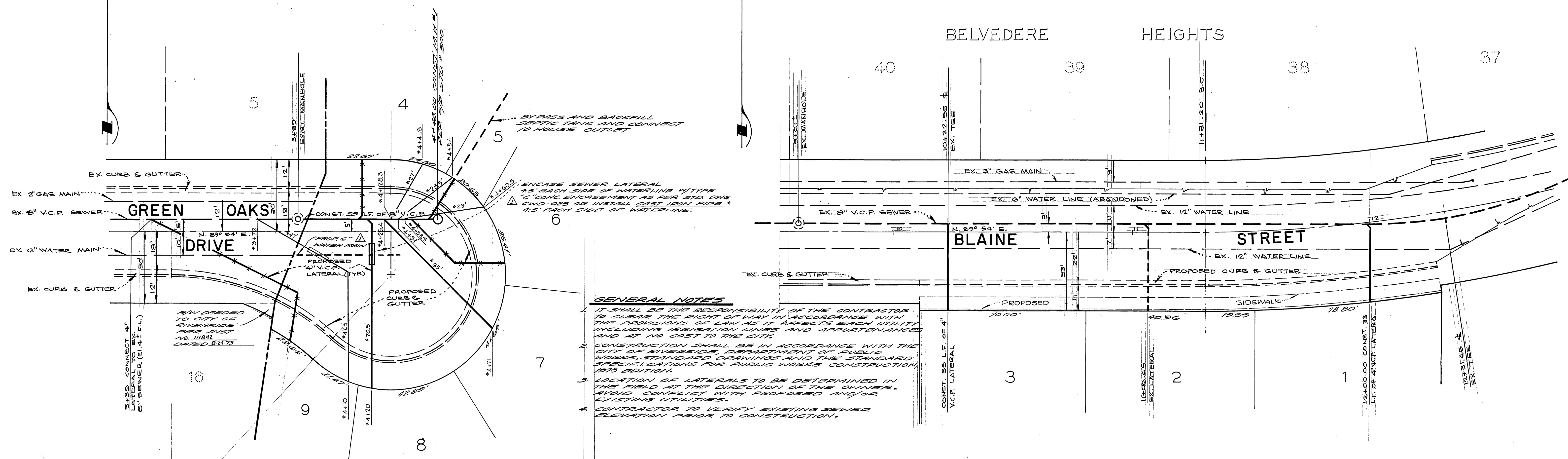
1230

1220



BELVEDERE HEIGHTS

40 38 37



BY PASS AND BACKFILL
SERVIC TANK AND CONNECT
TO HOUSE OUTLET

ENCASE SEWER LATERAL
AS EACH SIDE OF WATERLINE W/TYPE
"C" CONC. ENCASMENT AS PER STD. DWG.
45" CONC. OR INSTALL CAST IRON PIPE
45" EACH SIDE OF WATERLINE

- GENERAL NOTES**
- IT SHALL BE THE RESPONSIBILITY OF THE CONTRACTOR TO CLEAR THE RIGHT OF WAY IN ACCORDANCE WITH THE PROVISIONS OF LAW AS IT AFFECTS EACH UTILITY INCLUDING IRIGATION LINES AND APPURTENANCES AND AT HIS COST TO THE CITY.
 - CONSTRUCTION SHALL BE IN ACCORDANCE WITH THE CITY OF RIVERSIDE DEPARTMENT OF PUBLIC WORKS, STANDARD DRAWINGS AND THE STANDARD SPECIFICATIONS FOR PUBLIC WORKS CONSTRUCTION, 1973 EDITION.
 - LOCATION OF LATERALS TO BE DETERMINED IN THE FIELD AT THE DIRECTION OF THE OWNER. AVOID CONFLICT WITH PROPOSED AND/OR EXISTING UTILITIES.
 - CONTRACTOR TO VERIFY EXISTING SEWER ELEVATION PRIOR TO CONSTRUCTION.

R/W DEDICATED
TO CITY OF
RIVERSIDE
PER INST.
NO. 111841
DATED 8-24-73

* As Built 12-73 KPT

WATER DEPARTMENT
10-12-73

Bench Mark
P.K. NAIL AT WEST B.C.R. OF
S.W. CURB RETURN AT
STREET AND MARICOPA DRIVE.
(FB. 4-11-72)
ELEV. 1214.77

ALBERT A. WEBB ASSOCIATES,
CIVIL ENGINEERS
RIVERSIDE, CALIFORNIA
APPROVED BY *L.A. Wainwright*
DATE: 8-20-73 S.C.E. NO. 14056

DESIGNED BY P.H.	DRAWN BY W.J.K.	CHECKED BY B.M.
REVISIONS	APPR. DATE	

CITY OF RIVERSIDE, CALIFORNIA
DEPARTMENT OF PUBLIC WORKS
APPROVED BY *[Signature]* DATE 9-14-73
OFFICE ENGINEER
PARK DEPARTMENT
TRAFFIC DIVISION
ASSISTANT CITY ENG.

TRACT NO. 4783
SEWER PLAN AND PROFILE
GREEN OAKS DRIVE
BLAINE STREET
HORIZ. SCALE: 1" = 20'
VERT. SCALE: 1" = 4'

PROJECT NO. 72-283
S-956
SHEET 1 OF 1
FILE NO. 72-283-B