

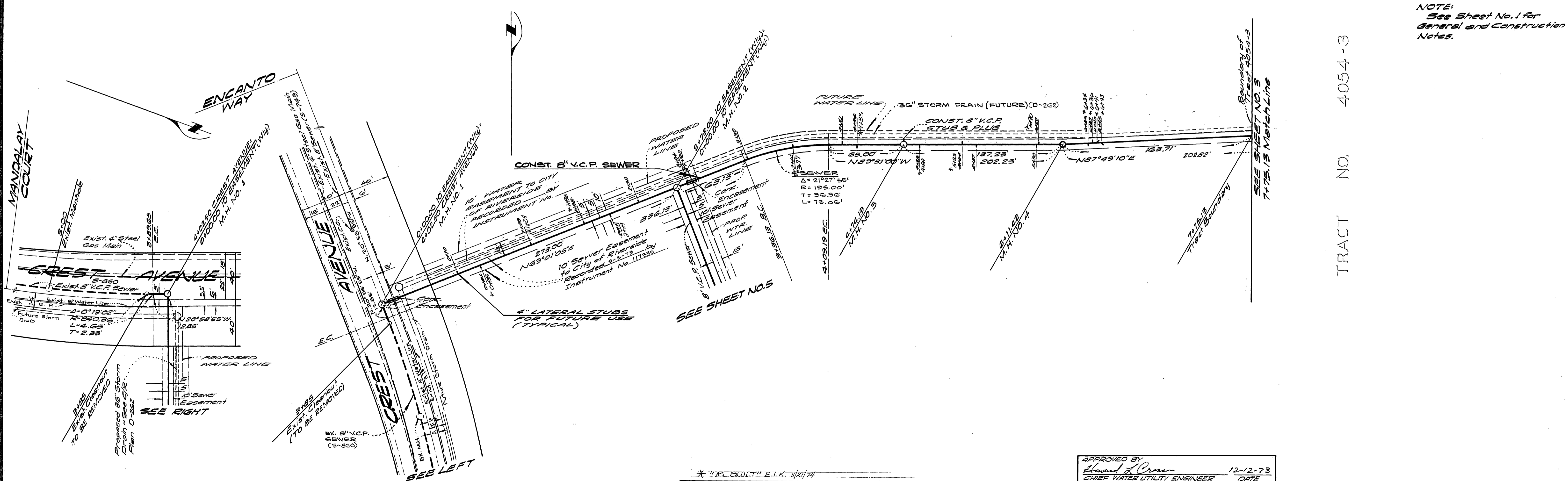
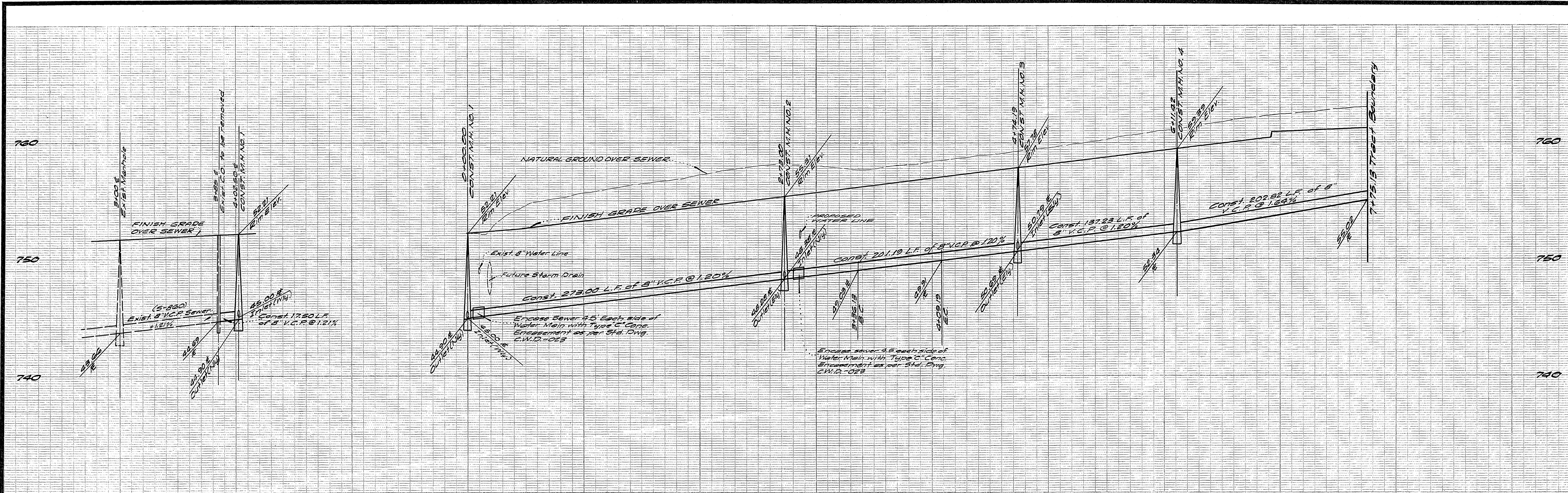
GENERAL NOTES

1. CONSTRUCTION SHALL BE IN ACCORDANCE WITH STANDARD SPECIFICATIONS FOR PUBLIC WORKS CONSTRUCTION, 1973 EDITION, AND CITY OF RIVERSIDE STANDARD DRAWINGS.
2. LOCATION OF WYES AND LATERALS TO BE DETERMINED AT THE DIRECTION OF THE OWNER.
3. MANHOLE FRAMES AND COVERS TO BE SET AT EXISTING OR PROPOSED GRADES.
4. PRIOR TO CONSTRUCTION OF SEWER, CONTRACTOR SHALL EXPOSE EXISTING SEWER AND VERIFY ITS EXISTING ELEVATION AND LOCATION.
5. ALL MANHOLES SHALL BE CONSTRUCTED PER CITY OF RIVERSIDE STANDARD NO. 500.
6. ALL CLEANOUTS SHALL BE CONSTRUCTED PER CITY OF RIVERSIDE STANDARD NO. 560.

BENCH MARK

PK. NAIL IN EAST CURB ON TYLER ST. ON E GAYLORD AVE. PRODUCED PER CITY OF RIVERSIDE AD. 1091 ELEV. 778.31 (Adjusted to C.R. Datum - Elev. 778.09 in September 1973)

<p>ALBERT A. WEBB ASSOCIATES CIVIL ENGINEERS RIVERSIDE, CALIFORNIA</p> <p>APPROVED BY <i>[Signature]</i> DATE 12-6-73 R.E. No. 12058</p>	<p>APPROVED BY <i>[Signature]</i> 12-12-73 CHIEF WATER UTILITY ENGINEER DATE</p> <p>CITY OF RIVERSIDE, CALIFORNIA DEPARTMENT OF PUBLIC WORKS</p> <p>APPROVED BY <i>[Signature]</i> DIRECTOR OF PUBLIC WORKS</p> <p>DATE 12/21/73</p>	<p>INDEX MAP TRACT 4054-3</p> <p>SCALE: 1" = 50'</p>	<p>PROJECT NO. 73-50</p> <p>S-957</p> <p>SHEET 1 OF 5</p> <p>FILE NO. 73-50-B</p>
<p>W.O. 73-50 FOR: ENGINEERING DEVELOPMENT F.B. 1031</p> <p>DESIGNED BY <i>[Signature]</i> DRAWN BY <i>[Signature]</i> CHECKED BY <i>[Signature]</i></p>			



NOTE:
See Sheet No. 1 for
General and Construction
Notes.

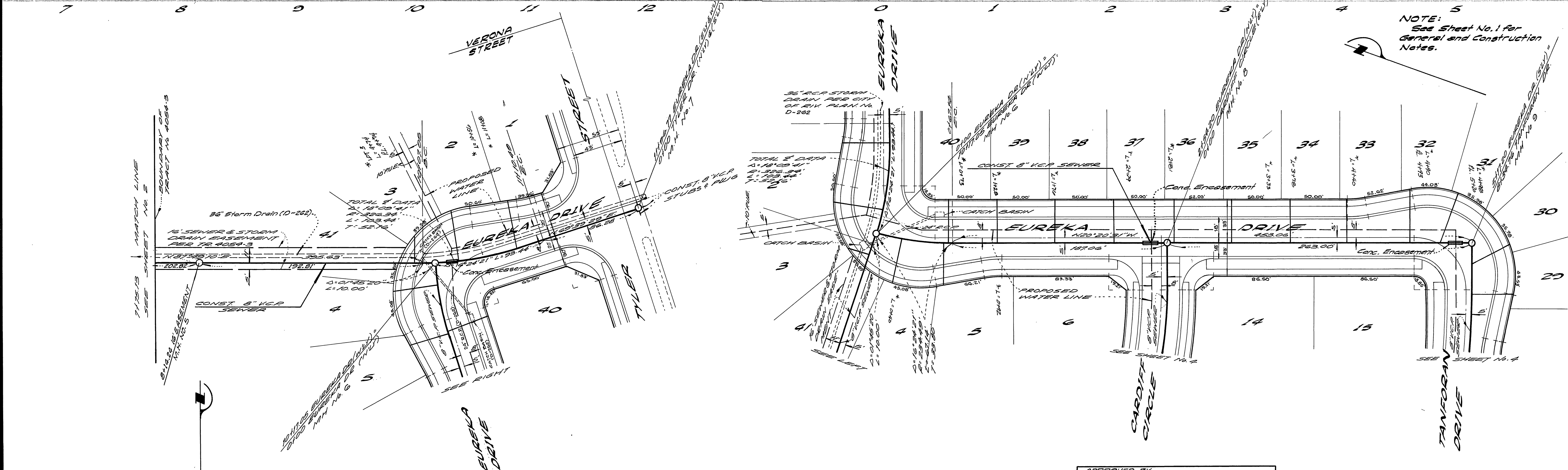
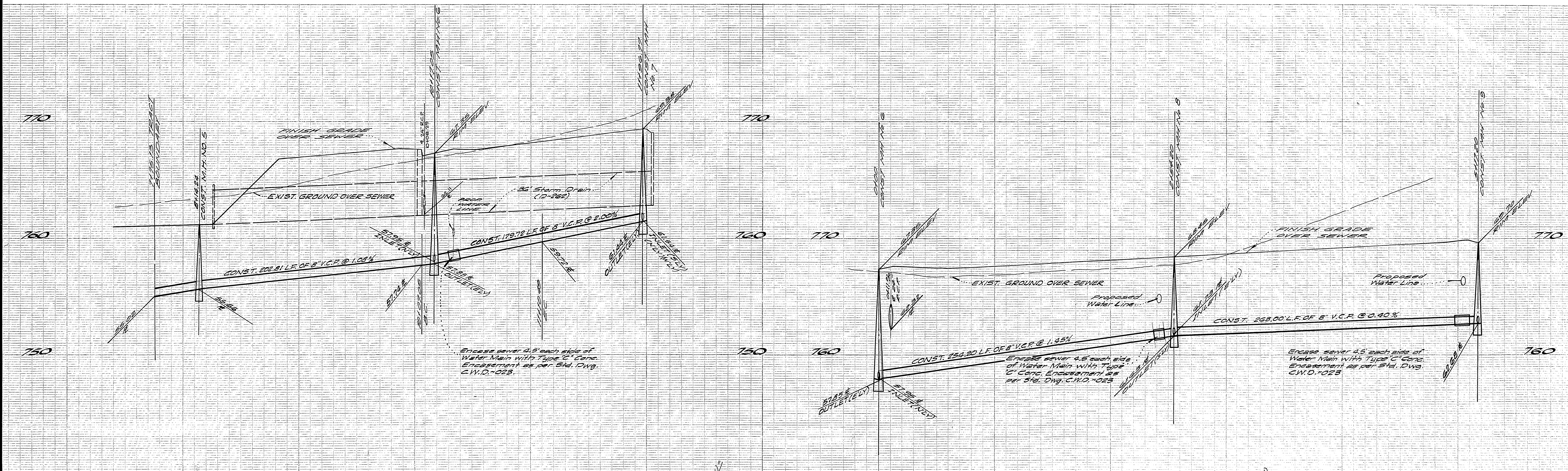
TRACT NO. 4054-3

BENCH MARK:
Rk. Nail in East Curb on Tyler
Street, on E Gaylord Avenue
produced, per City of Riverside
R.E. 70841.
Elev. 776.21
(Adjusted to C/R Datum - Elev.
776.09 in September 1973)

APPROVED BY <i>Albert A. Wehr</i> CIVIL ENGINEER 5 VERSAILLE AVENUE RIVERSIDE, CALIFORNIA APPROVED BY <i>W. Hanscott</i> DATE 8-4-73 R.E. No. 16056		APPROVED BY <i>Edward J. Ormer</i> CHIEF WATER UTILITY ENGINEER 12-12-73 DATE	
MARK REVISIONS APPR. DATE		CITY OF RIVERSIDE, CALIFORNIA DEPARTMENT OF PUBLIC WORKS APPROVED BY <i>William D. Hansen</i> DIRECTOR OF PUBLIC WORKS DATE 12/21/73	
W.O. 73-50 FOR ANDREWS DEV. CO. F.B. 1031		DESIGNED BY <i>R.H.</i> DRAWN BY <i>R.H.</i> CHECKED BY <i>W.C.</i>	

APPROVED BY <i>Edward J. Ormer</i> CHIEF WATER UTILITY ENGINEER 12-12-73 DATE	
CITY OF RIVERSIDE, CALIFORNIA DEPARTMENT OF PUBLIC WORKS APPROVED BY <i>William D. Hansen</i> DIRECTOR OF PUBLIC WORKS DATE 12/21/73	

SEWER PLAN AND PROFILE TRACT NO. 4054-3 10' EASEMENT	PROJECT NO. 73-50 5-957 SHEET 2 OF 5 FILE NO. 73-50-15
HORIZ. SCALE: 1" = 40' VERT. SCALE: 1" = 4'	



NOTE:
See Sheet No. 1 for
General and Construction
Notes.

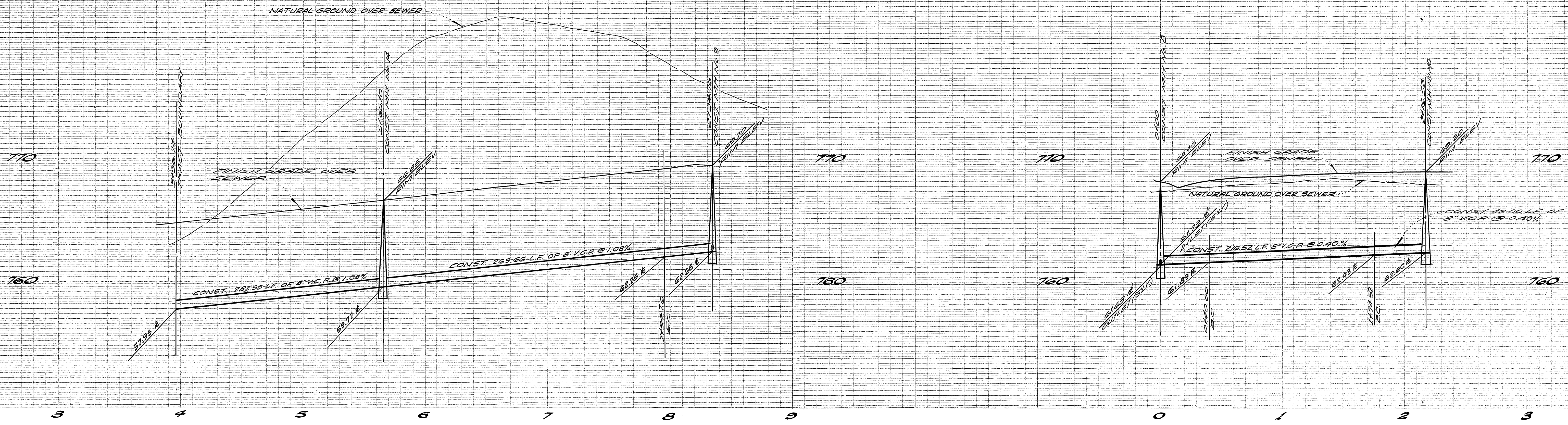
THIS IS MATCH LINE
SEE SHEET NO. 2

SEE SHEET NO. 4

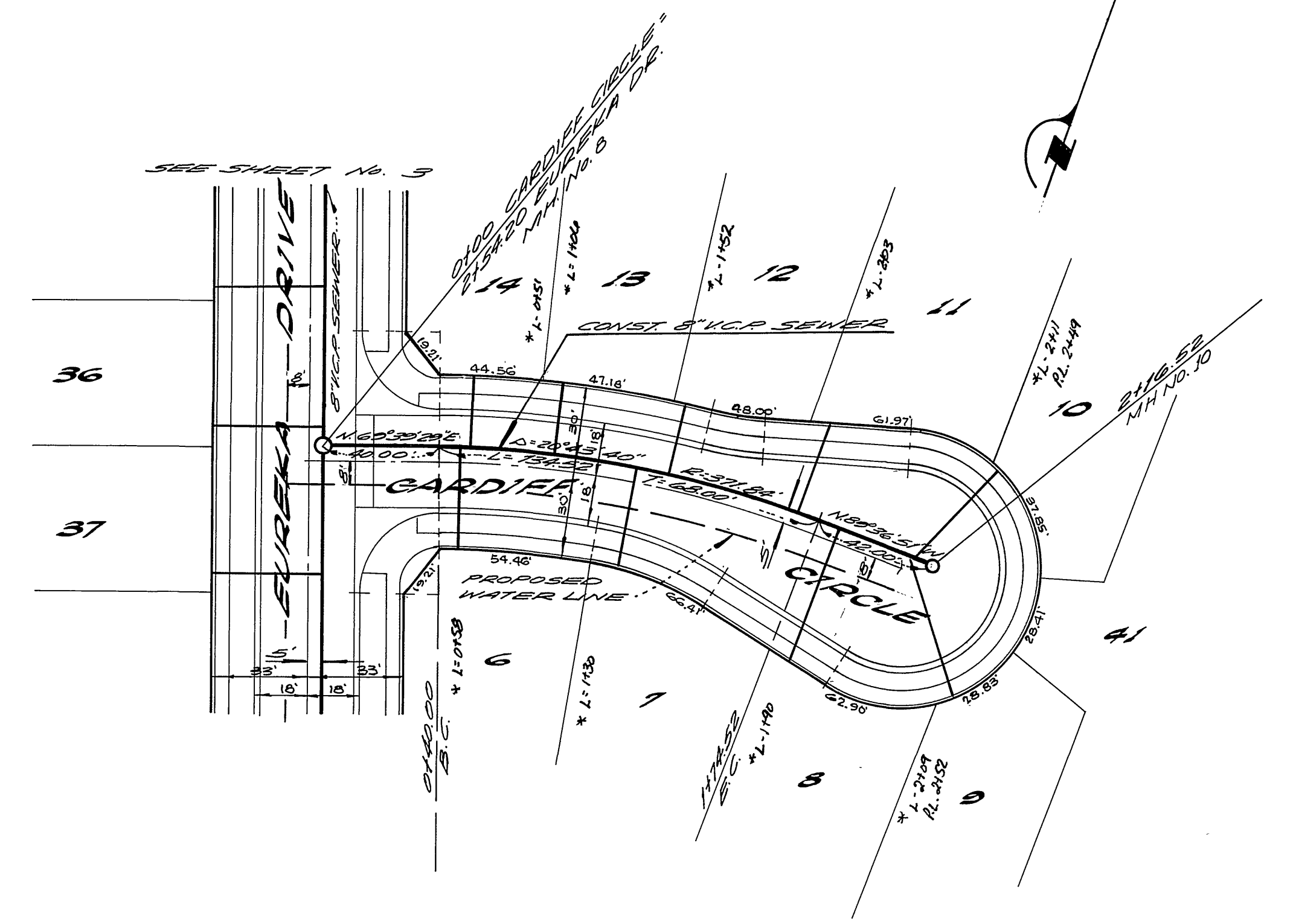
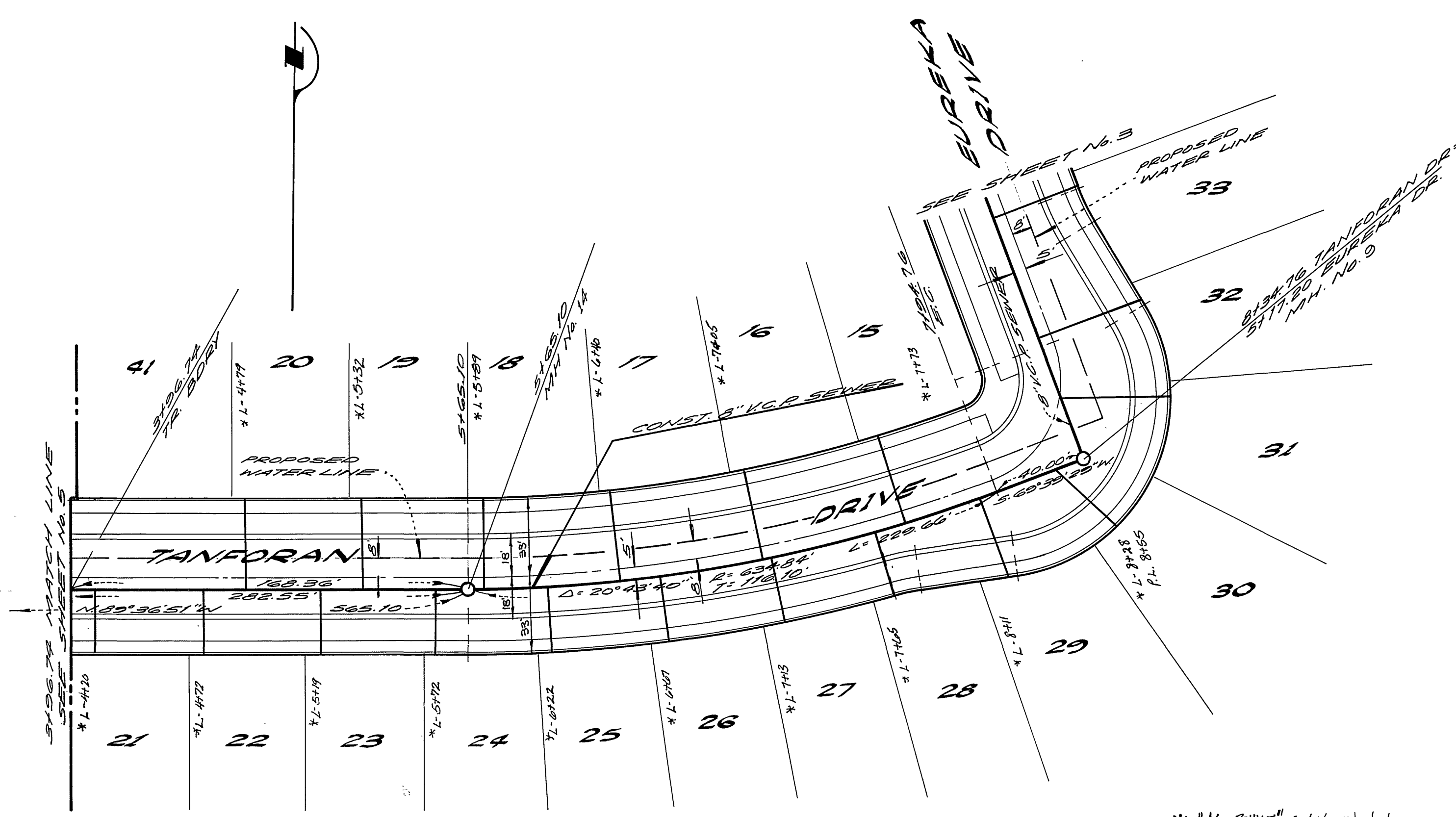
BENCH MARK
RE NAIL IN EAST CURB
ON TYLER STREET, ON
E SAYLOR AVENUE
PROPOSED, PER CITY
OF RIVERSIDE F.B.
7061,
ELEV. 778.21
(Adjusted to C.R. Datum - Elev.
778.09 in September 1973)

* "AS BUILT" E.I.K. 11/20/74

ALBERT A. WEBB ASSOCIATES CIVIL ENGINEERS RIVERSIDE, CALIFORNIA APPROVED BY: <i>[Signature]</i> DATE: 2-6-73 R.E. No. 12058 W.O. 73-50 FOR: ANDREWS DEV. CO. F.B. 1231	DESIGNED BY: <i>[Signature]</i> DRAWN BY: <i>[Signature]</i> CHECKED BY: <i>[Signature]</i>	APPROVED BY: <i>[Signature]</i> DATE: 12-12-73 CHIEF WATER UTILITY ENGINEER	CITY OF RIVERSIDE, CALIFORNIA PUBLIC WORKS DEPARTMENT SENEER PLAN AND PROFILE TRACT NO. 4054-3 EUREKA DRIVE 16' EASEMENT SCALE: HORIZ. 1"=40' VERT. 1"=4'	ACCOUNT No. 73-50 DRAWING NUMBER 5-957 SHEET 3 OF 5 73-50-B
		APPROVED BY: <i>[Signature]</i> DATE: 12/21/73 DIRECTOR OF PUBLIC WORKS		



NOTE:
See Sheet No. 1 for
General and Construction
Notes.



BENCH MARK
P.C. NAIL IN EAST CURB
ON TYLER ST, ON E
WAYLORD PRODUCED
NEAR CURB OF RIVERSIDE
H.S. 1946/11
ELEV. 778.21
(Adjusted to C/R Datum-Elev.
778.09 in September 1973)

* "As Built" E.J.K. 11/21/74

ALBERT A. WEBB ASSOCIATES
CIVIL ENGINEERS
RIVERSIDE, CALIFORNIA

APPROVED BY *[Signature]* DATE 8-6-73
R.E. No. 16052

APPROVED BY *[Signature]* DATE 12-12-73
CHIEF WATER UTILITY ENGINEER

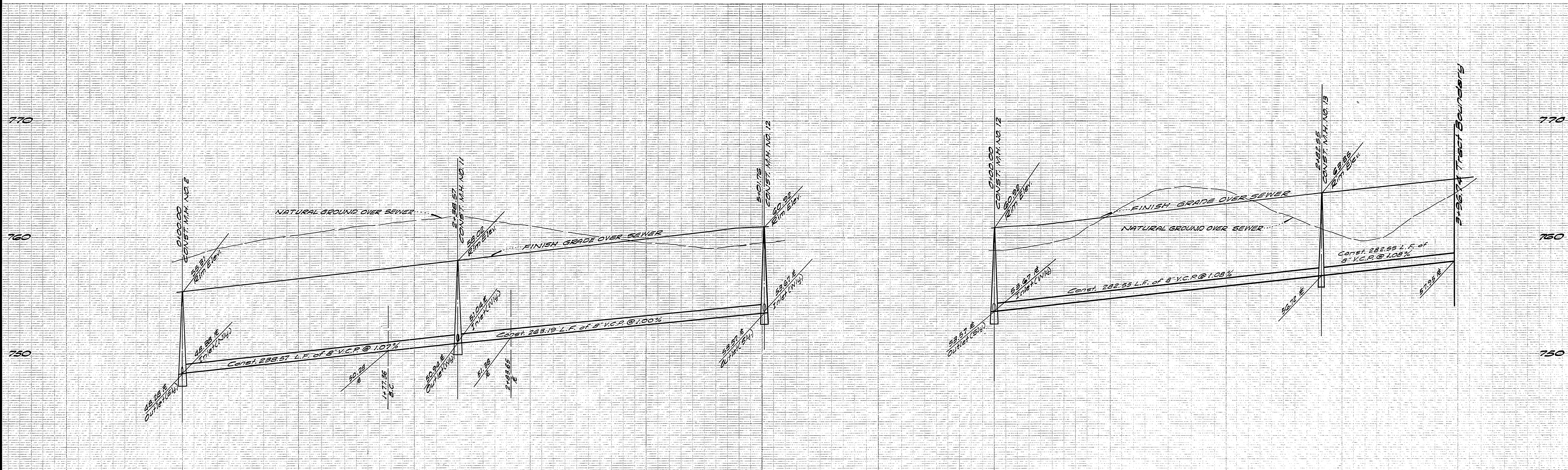
CITY OF RIVERSIDE, CALIFORNIA
PUBLIC WORKS DEPARTMENT

APPROVED BY *[Signature]* DATE 12/21/73
DIRECTOR OF PUBLIC WORKS

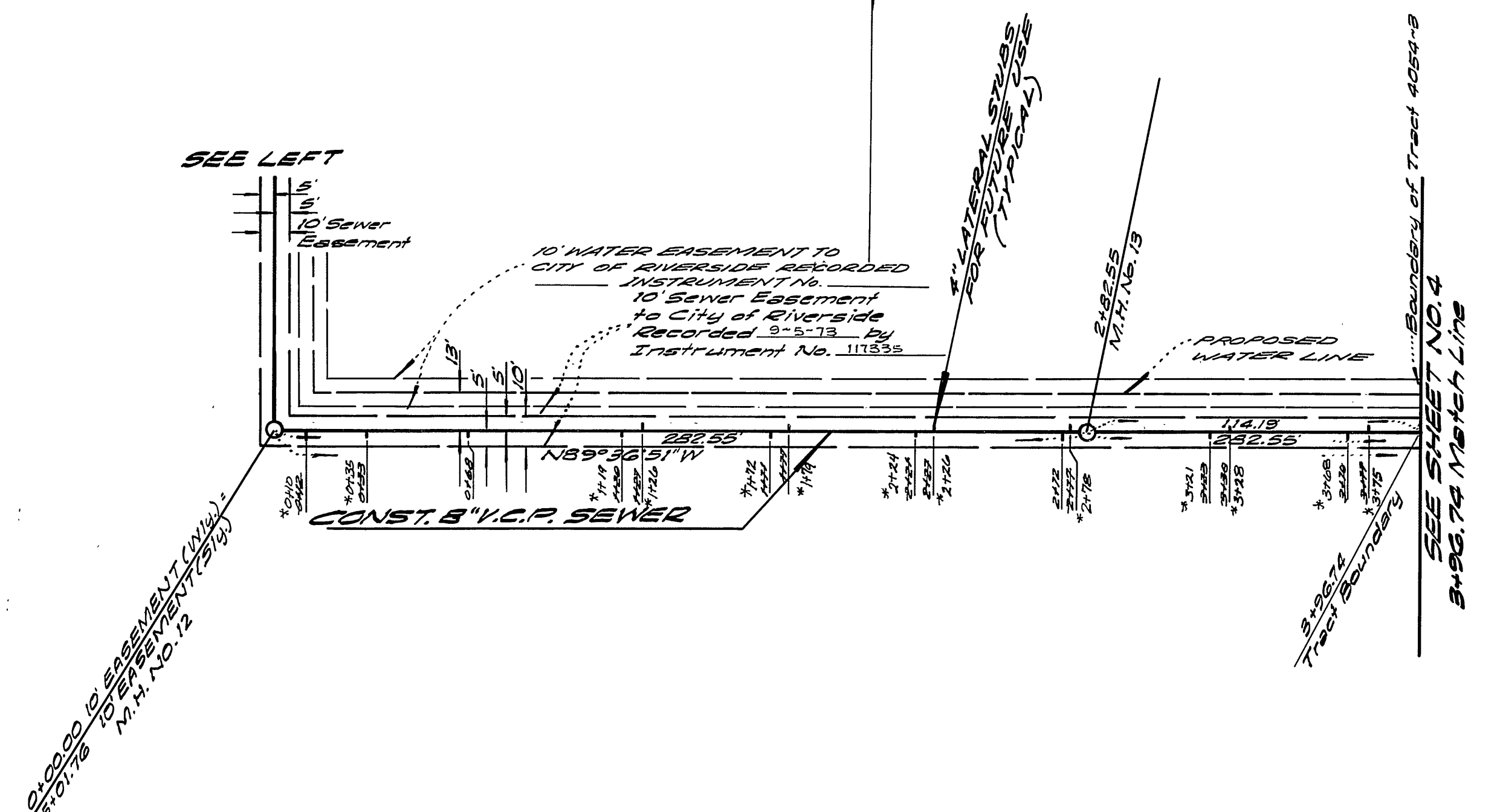
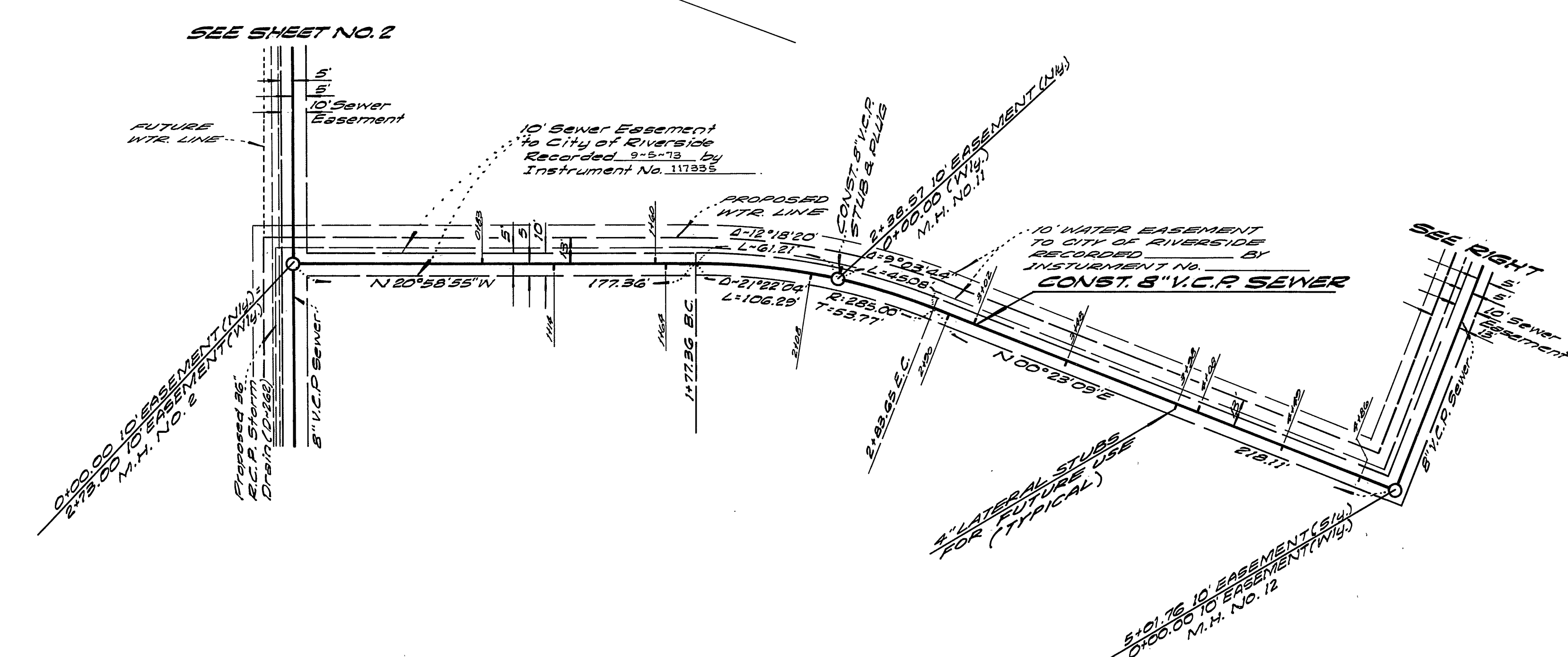
SEWER PLAN AND PROFILE
TRACT NO. 4054-3
TANFORAN DRIVE
CARDIFF CIRCLE

ACCOUNT No. 73-50
DRAWING NUMBER
5-957
SHEET 4 OF 5
73-50-B

DESIGNED BY *[Signature]* DRAWN BY *[Signature]* CHECKED BY *[Signature]*



NOTE:
See Sheet No. 1 for
General and Construction
Notes.



BENCH MARK:
R.K. Nail in East Curb on Tyler
Street, on S Gayland Avenue
produced, per City of Riverside
F.B. 10611
Elev. 718.21 (Adjusted to CIP Datum -
Elev. 718.09 in September 1972)

* "AS BUILT" E.J.K. 11/21/74

ALBERT A. WEBB ASSOCIATES CIVIL ENGINEERS RIVERSIDE, CALIFORNIA APPROVED BY: <i>[Signature]</i> DATE: 6-13 R.E. No. 16056	APPROVED BY: <i>[Signature]</i> 12-12-73 CHIEF WATER UTILITY ENGINEER DATE	CITY OF RIVERSIDE, CALIFORNIA PUBLIC WORKS DEPARTMENT		SEWER PLAN AND PROFILE TRACT NO. 4054-3 10' EASEMENT	ACCOUNT No. 73-50 DRAWING NUMBER 5-957 SHEET 5 OF 5 73-50 - B
		APPROVED BY: <i>[Signature]</i> DATE: 12-21-73 CHIEF PUB. WKS. ENGR.	SCALE: Horiz. 1"=40', Vert. 1"=4'		

TRACT NO. 4054-3