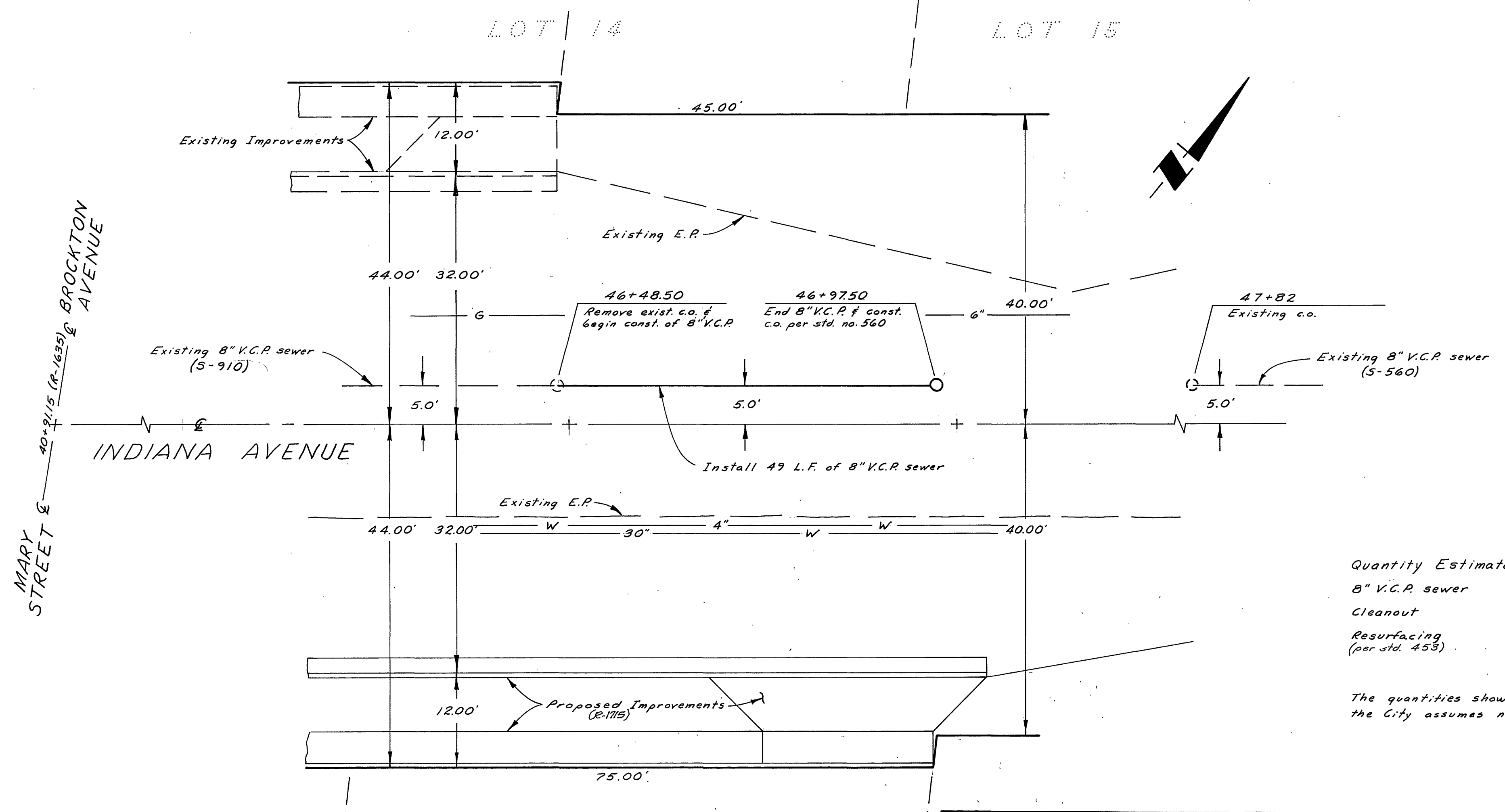


**Bench Mark**  
 601-16-68: Bronze Disc in conc. post set in metal capped well, on Washington St., 182' N.W. of Indiana Ave.  
 Elev. = 866.370



- General Notes:**
- Construction shall be in accordance with Standard Specifications for Public Works Construction, 1973 edition, and the City of Riverside Standard Drawings.
  - It shall be the responsibility of the contractor to clear the right of way in accordance with the provisions of law as it affects each utility, including irrigation lines and appurtenances, and at no cost to the city.
  - Prior to construction of sewer, the contractor is to expose existing sewer and contact the Engineer for verification of existing elevations.
  - Joints in vitrified clay pipe sewers shall be type "X" or "G" as per Standard Specifications for Public Works Construction, 1973 edition.
  - Pipe shall be bedded per Case I, Standard Drawing No. 452.
  - All stubs and laterals to be constructed in accordance with Standard Drawing No. 362. Stubs shall be plugged and capped.
  - All sewer laterals passing over the 30" water line on the south side of Indiana Ave. shall be encased or cast iron pipe per City Water Dwg. No. 023, Public Utilities Dept.

**Notice to Contractor:**  
 The existence and location of any underground utility pipes or structures shown on this plan are obtained by a search of the available records. To the best of our knowledge there are no existing utilities except as shown on these plans. The contractor is required to take due precautionary measures to protect the utility lines shown and any other lines not of record or not shown on this plan.

**Quantity Estimate:**  
 8" V.C.P. sewer 49 L.F.  
 Cleanout 1 Ea.  
 Resurfacing (per std. 453) 150 S.F.

The quantities shown are for information only and the City assumes no responsibility for their accuracy.

MARY STREET E  
 40+91/15 (R-1635) E  
 BROCKTON AVENUE

APPROVED BY  
  
 CHIEF WATER UTILITY ENGINEER

**ERNEST PINTOR**  
 LAND SURVEYOR  
 4255 MAIN STREET  
 RIVERSIDE, CALIFORNIA  
 PHONE: (714) 963-4292  
 APPROVED BY:   
 R.C.E. 18045 DATE: 6-27-73

MARK	REVISIONS	APPR.	DATE

**CITY OF RIVERSIDE, CALIFORNIA**  
 DEPARTMENT OF PUBLIC WORKS

APPROVED BY	BY DATE	APPROVED BY
OFFICE ENGINEER		
PARK DEPARTMENT		DIRECTOR OF PUBLIC WORKS
TRAFFIC DIVISION		
ASSISTANT CITY ENG.	10.16	

DESIGNED BY J.Z. DRAWN BY J.Z. CHECKED BY ELS

IMPROVED BUT NOT BUILT  
**SEWER PLAN & PROFILE**  
**INDIANA AVENUE**  
 FROM 495' N.E.1/4 OF BROCKTON AVE TO 544' N.E.1/4, 5' N.W.1/4 OF E.  
 ZONING CASE R-33-689  
 PROJECT NO. **S-959**  
 SHEET 1 OF 1  
 HORIZ. SCALE: 1" = 10' VERT. SCALE: 1" = 2'  
 FILE NO. W.O. # 3116