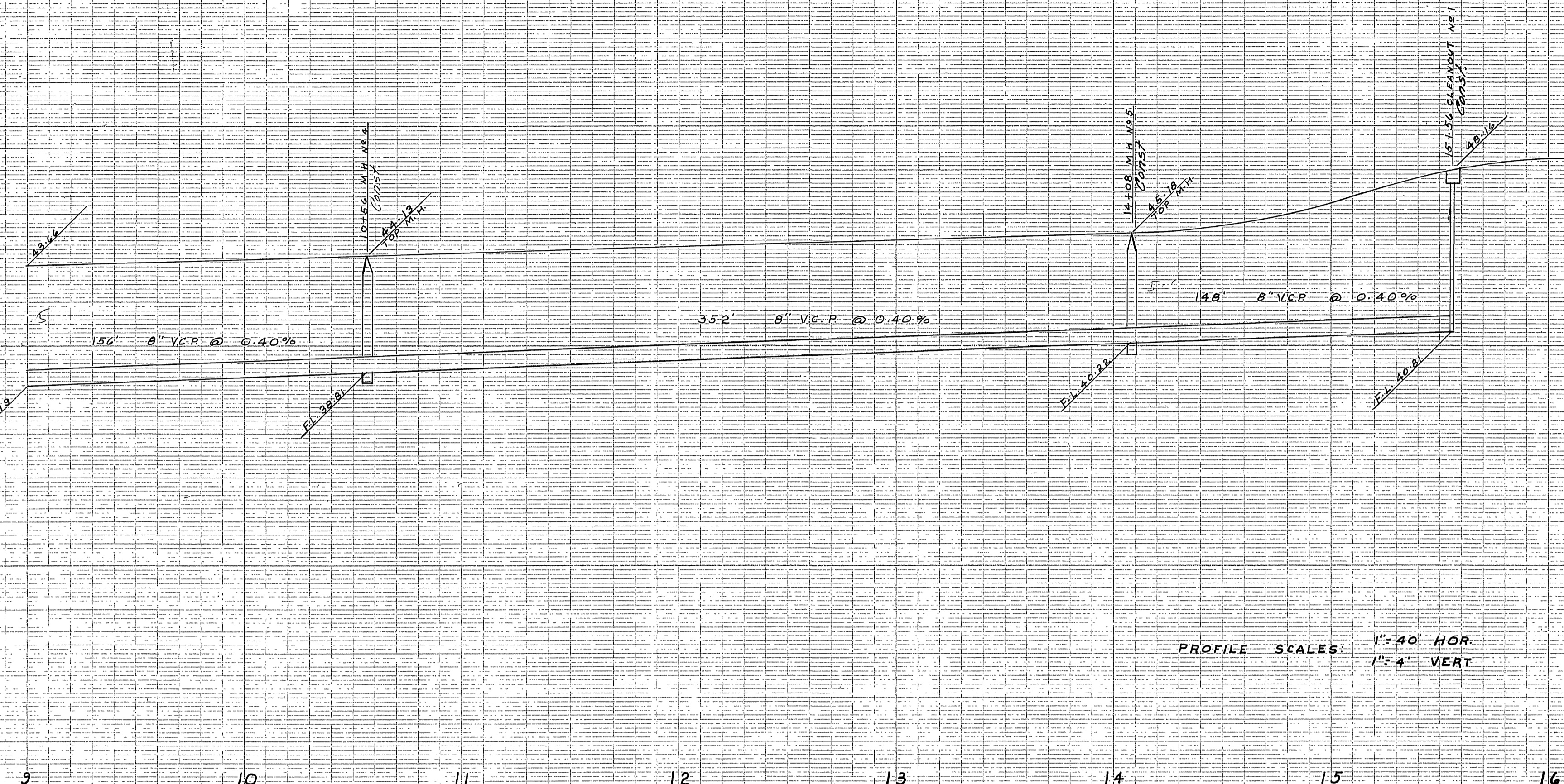


L. FREDERICK PACK
 R.E. 7448
 COVINA, CALIFORNIA
 APPROVED BY *L. Frederick Pack* DATE

CITY OF RIVERSIDE, CALIFORNIA
 DEPARTMENT OF PUBLIC WORKS
 SEWER PLAN & PROFILE
 BROCKTON HEIGHTS NO. 8
 CONWAY DRIVE FROM: STA 0+00 TO: STA 9+00
 HOR SCALE 1"=40' VERT SCALE 1"=4'
 APPROVED BY *J.B. [Signature]* NO. **S-96**
 DIRECTOR OF PUBLIC WORKS
 DATE *Aug 21/97* SHEET 1 OF 2

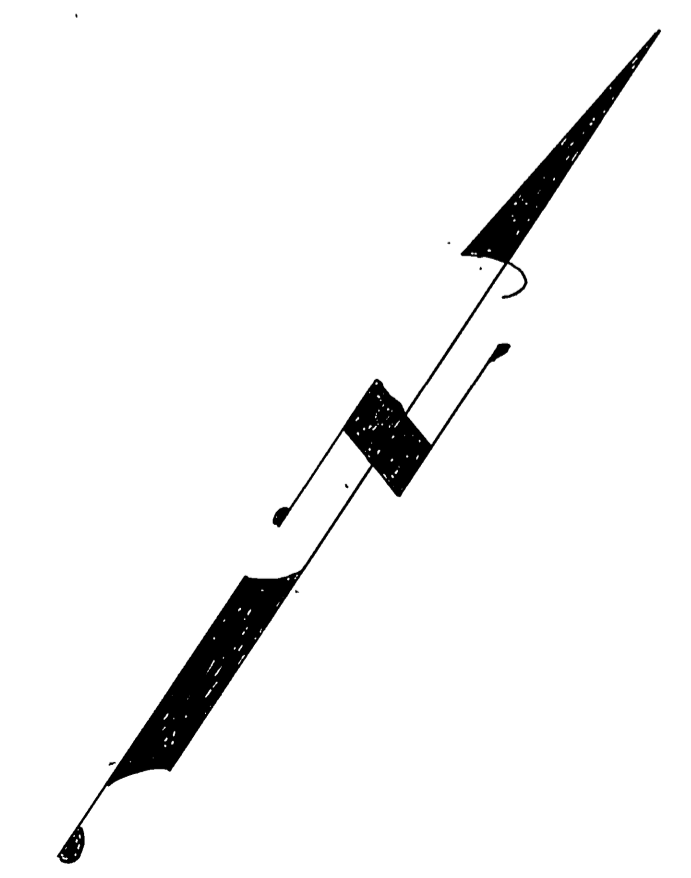
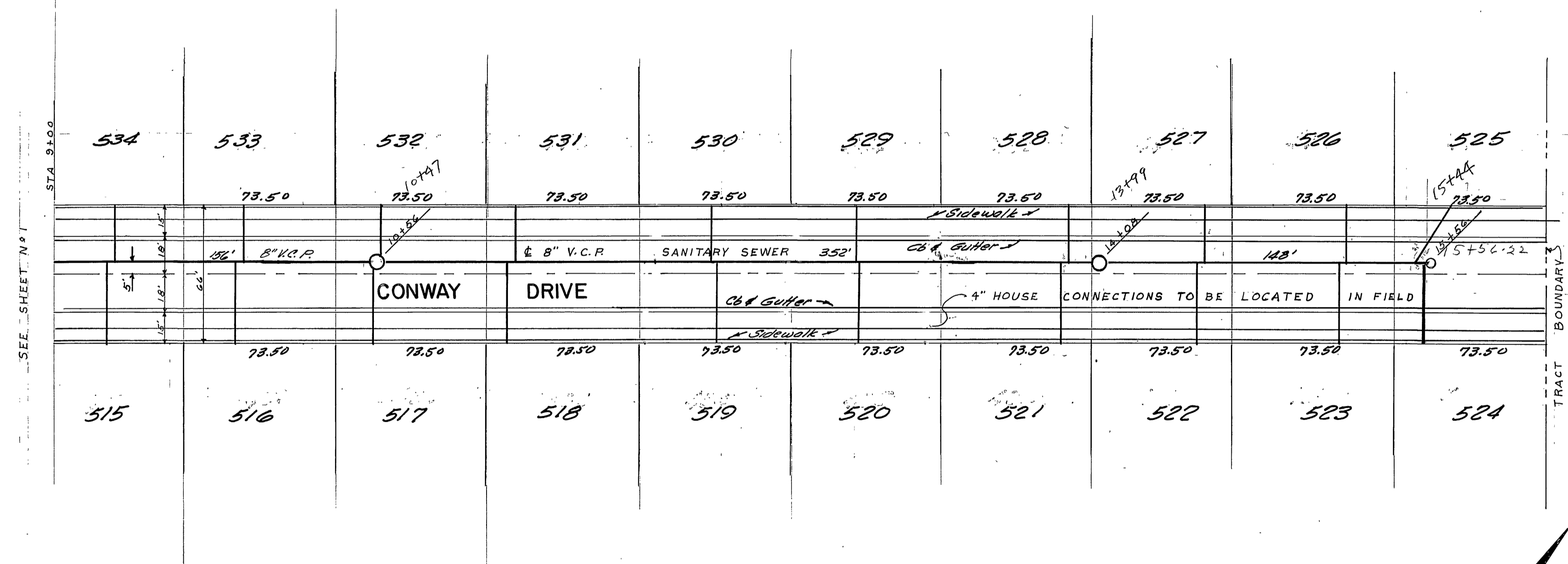
745
740
735
730



PROFILE SCALES:
1" = 40' HOR
1" = 4' VERT

BENCHMARK
SPIKE IN P.R. N. 3841-J
COLORADO 8 MONROE
ELEV. 754.46
All const. to be in accordance
with City of Riverside Std.

14522



L. FREDERICK PACK R.E. 7448 COVINA, CALIFORNIA	
APPROVED BY <i>L. Frederick Pack</i> DATE	
CITY OF RIVERSIDE, CALIFORNIA DEPARTMENT OF PUBLIC WORKS	
SEWER PLAN & PROFILE BROCKTON HEIGHTS NO. 8	
CONWAY DRIVE FROM: STA. 9+00 TO: STA. 15+56	
HOR. SCALE 1" = 40' VERT. SCALE 1" = 4'	
APPROVED BY <i>M. [Signature]</i> DIRECTOR OF PUBLIC WORKS DATE <i>Aug 21, 190</i>	NO. S-96 SHEET 2 OF 2