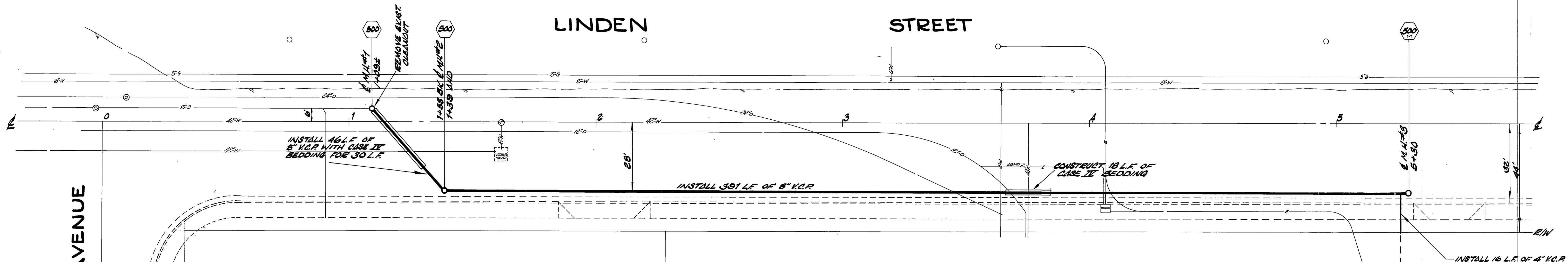


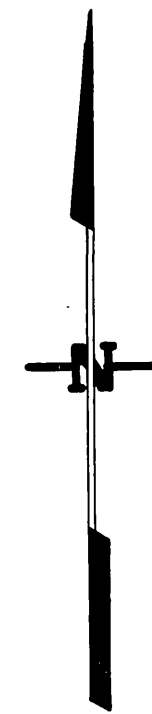
F.B. 4/48-49
ELEV. 978.48
B.M. ON X ON CORNER NEAR (700)
1500 E ST OF CHICAGO ON
N11 SIDE OF LINDEN

F.B. 949/23-68
ELEV. 974.21
B.M. P.K. NAIL IN CO. SET AT
CRANFORD AND LINDEN



GENERAL NOTES

1. CONSTRUCTION SHALL BE IN ACCORDANCE WITH STANDARD SPECIFICATIONS FOR PUBLIC WORKS CONSTRUCTION, 1973 EDITION.
2. THE FOLLOWING STANDARD DRAWINGS APPLY:
 NO. 452 FOR PIPE BEDDING
 NO. 453 FOR TRENCH BACKFILL
 NO. 500 FOR MANHOLES
 NO. 500M FOR MANHOLE
 NO. 502 FOR SEWER LATERAL
3. EXCUT DEPTH OF UNDERGROUND UTILITIES MARKED 'X' ARE UNKNOWN. THE LOCATIONS AND DEPTHS SHOWN ON THE PLAN ARE FROM UTILITY RECORDS. THE CONTRACTOR IS REQUIRED TO TAKE DUE PRECAUTIONARY MEASURES TO LOCATE AND PROTECT ALL UNDERGROUND FACILITIES.
4. CONTRACTOR SHALL RESTORE AT HIS OWN EXPENSE ANY CURBS AND GUTTER, SIDEWALKS, OR OTHER IMPROVEMENTS REMOVED OR DAMAGED BY CONSTRUCTION.



CRANFORD AVENUE

LINDEN

STREET

APPROVED BY
Chief Water Utility Engineer

MARK	REVISIONS	APPR. DATE

DESIGNED BY S.T.B. DRAWN BY [Signature] CHECKED BY [Signature]

CITY OF RIVERSIDE
PUBLIC WORKS DEPARTMENT

APPROVED BY
PRINCIPAL ENGINEER
PARK DEPARTMENT
TRAFFIC DIVISION
CHIEF P. W. ENGINEER

APPROVED BY
PUBLIC WORKS DIRECTOR

DATE

LINDEN STREET
SEWER EXTENSION

FROM CRANFORD AVENUE TO 525' EASTERY

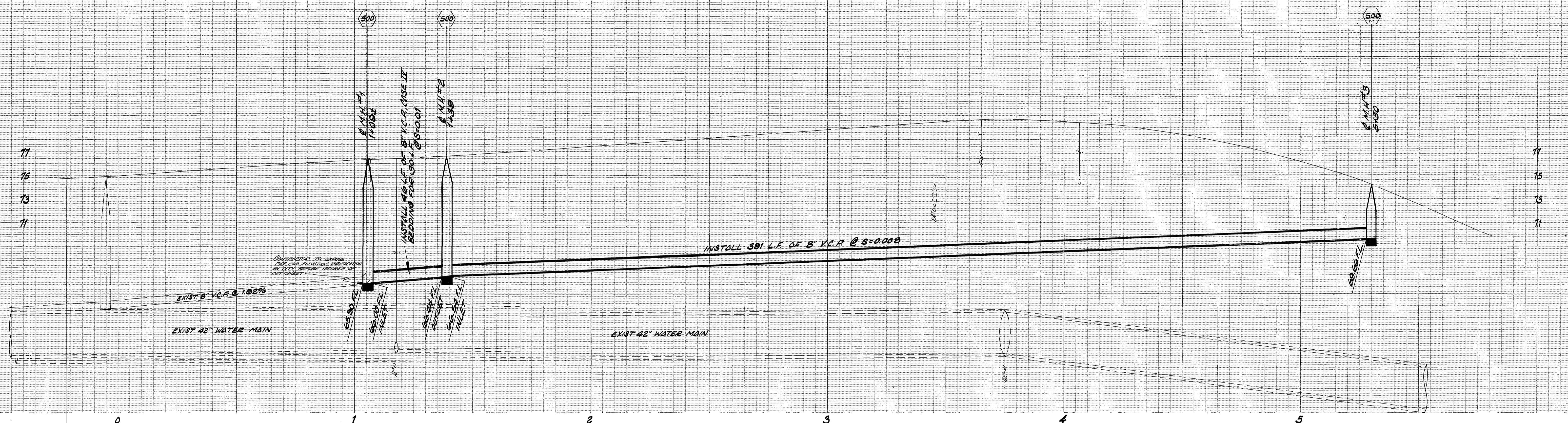
HORIZ. SCALE: 1" = 20'
VERT. SCALE: 1" = 4'

ACCOUNT NO. 65-752-792-4787

S-961

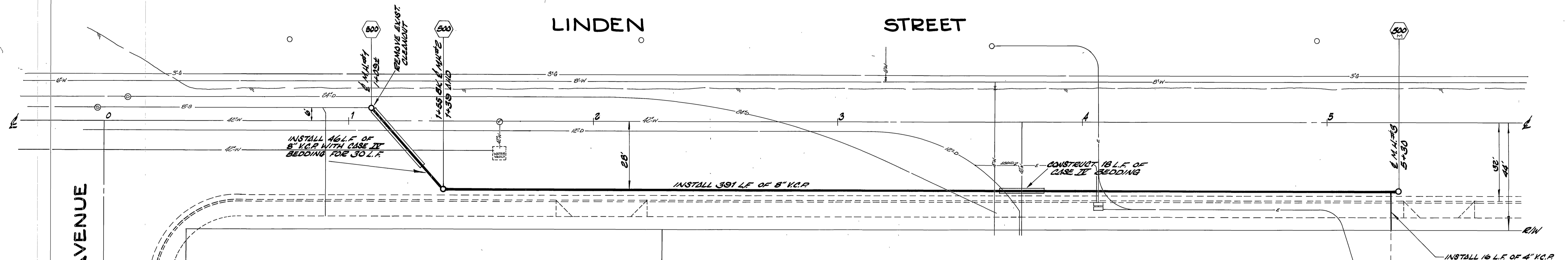
SHEET 1 OF 1

FILE NO.



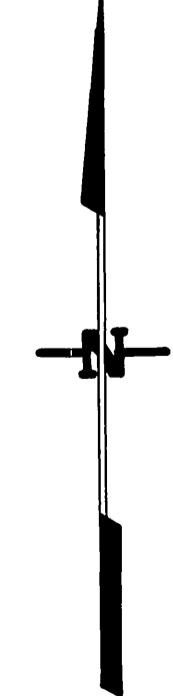
F.B. X/18-49
ELEV. 978.48
B.M. ON X ON CONG. WEIR (700)
1300 S.W. OF CHICAGO ON
W.V. SIDE OF LINDEN

F.B. 949/03-08
ELEV. 974.21
B.M. P.E. NAIL IN CB. RET. AT
CRANFORD AND LINDEN



GENERAL NOTES

1. CONSTRUCTION SHALL BE IN ACCORDANCE WITH STANDARD SPECIFICATIONS FOR PUBLIC WORKS CONSTRUCTION, 1973 EDITION.
2. THE FOLLOWING STANDARD DRAWINGS APPLY:
 NO. 452 FOR PIPE BEDDING
 NO. 453 FOR TRENCH BACKFILL
 NO. 500 FOR MANHOLES
 NO. 500M FOR MANHOLE
 NO. 500L FOR SEWER LATERAL
3. EXIST. DEPTH OF UNDERGROUND UTILITIES MARKED WITH 'X' ARE UNKNOWN. THE LOCATIONS AND DEPTHS SHOWN ON THE PLAN ARE FROM UTILITY RECORDS. THE CONTRACTOR IS REQUIRED TO TAKE DUE PRECAUTIONARY MEASURES TO LOCATE AND PROTECT ALL UNDERGROUND FACILITIES.
4. CONTRACTOR SHALL RESTORE AT HIS OWN EXPENSE ANY CURBS AND BUTTER, SIDEWALKS OR OTHER IMPROVEMENTS REMOVED OR DAMAGED BY CONSTRUCTION.



CRANFORD AVENUE

LINDEN STREET

CITY OF RIVERSIDE
PUBLIC WORKS DEPARTMENT

LINDEN STREET
SEWER EXTENSION

ACCOUNT NO. 65-752-792-4787

5-961

FROM CRANFORD AVENUE TO 525' EASTERY

SHEET 1 OF 1

APPROVED BY
Chief Water Utility Engineer

MARK	REVISIONS	APPR. DATE	CHECKED BY

APPROVED BY
PRINCIPAL ENGINEER
PARK DEPARTMENT
TRAFFIC DIVISION
CHIEF P. W. ENGINEER

APPROVED BY
PUBLIC WORKS DIRECTOR
DATE

HORIZ. SCALE: 1" = 20'
VERT. SCALE: 1" = 4'

FILE NO.