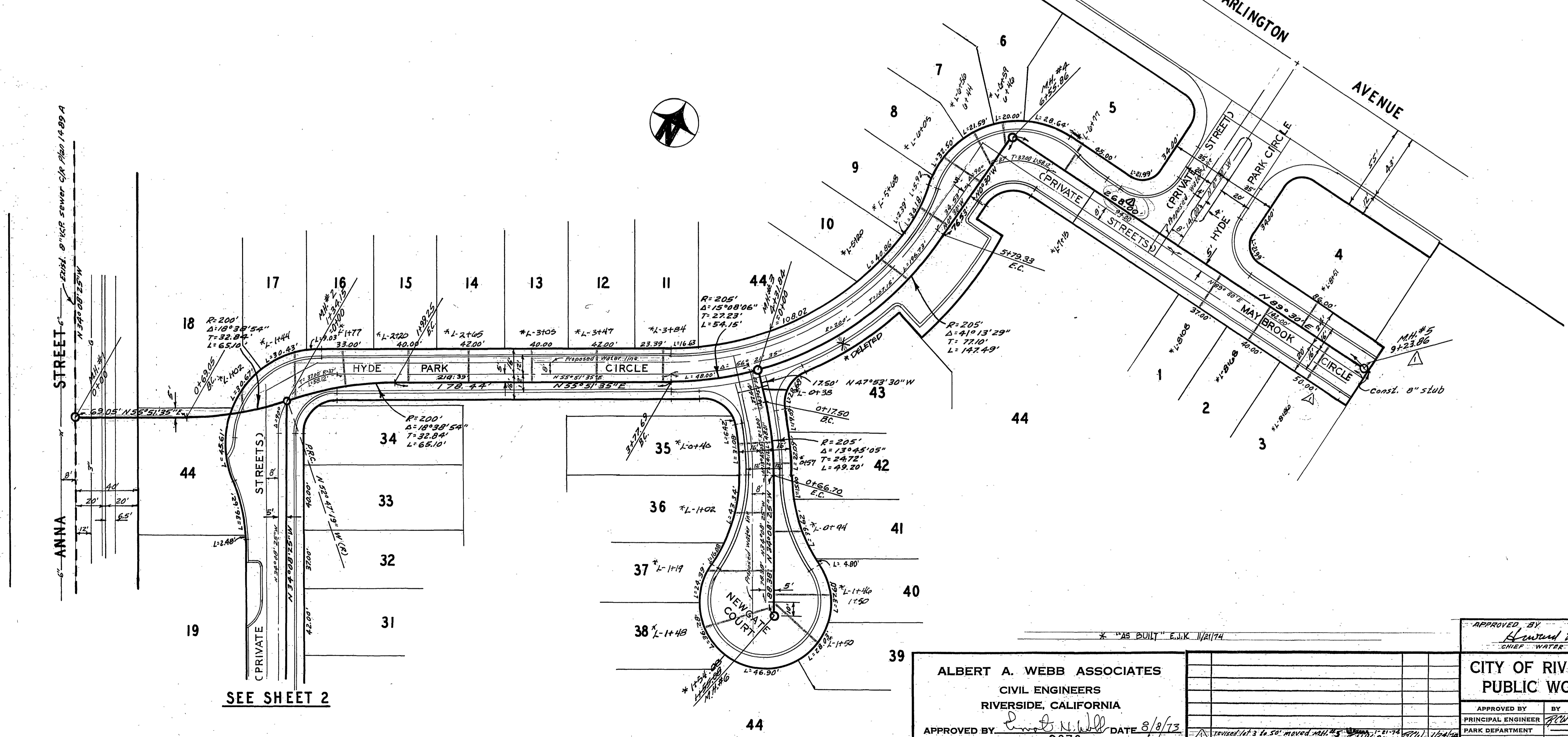


BENCH MARK
 (G-7-A) Elev. 967.071, P.K. night in center of S.W. curb return @
 Arlington & Victoria C.R. F.B. 8/29/34

GENERAL NOTES

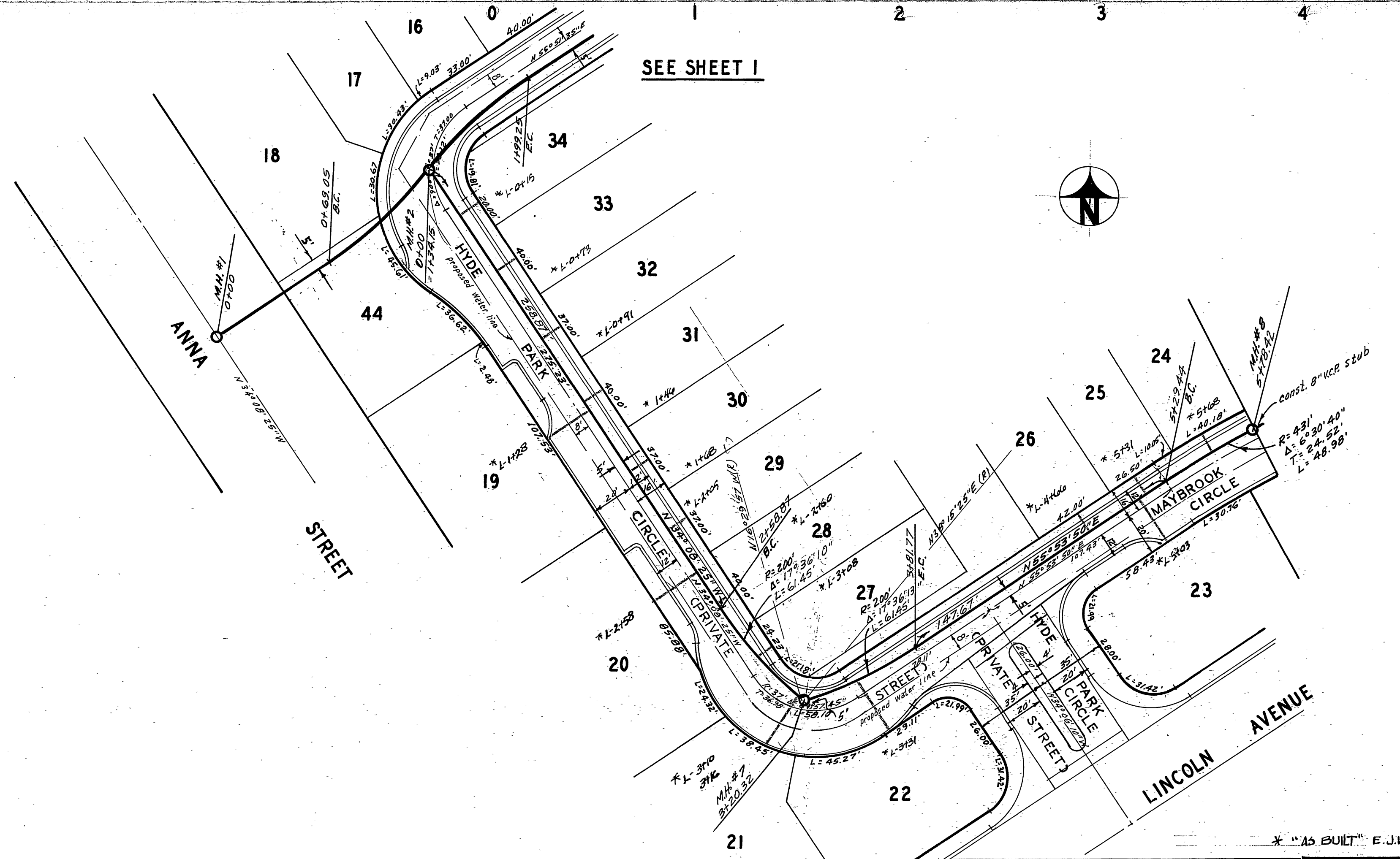
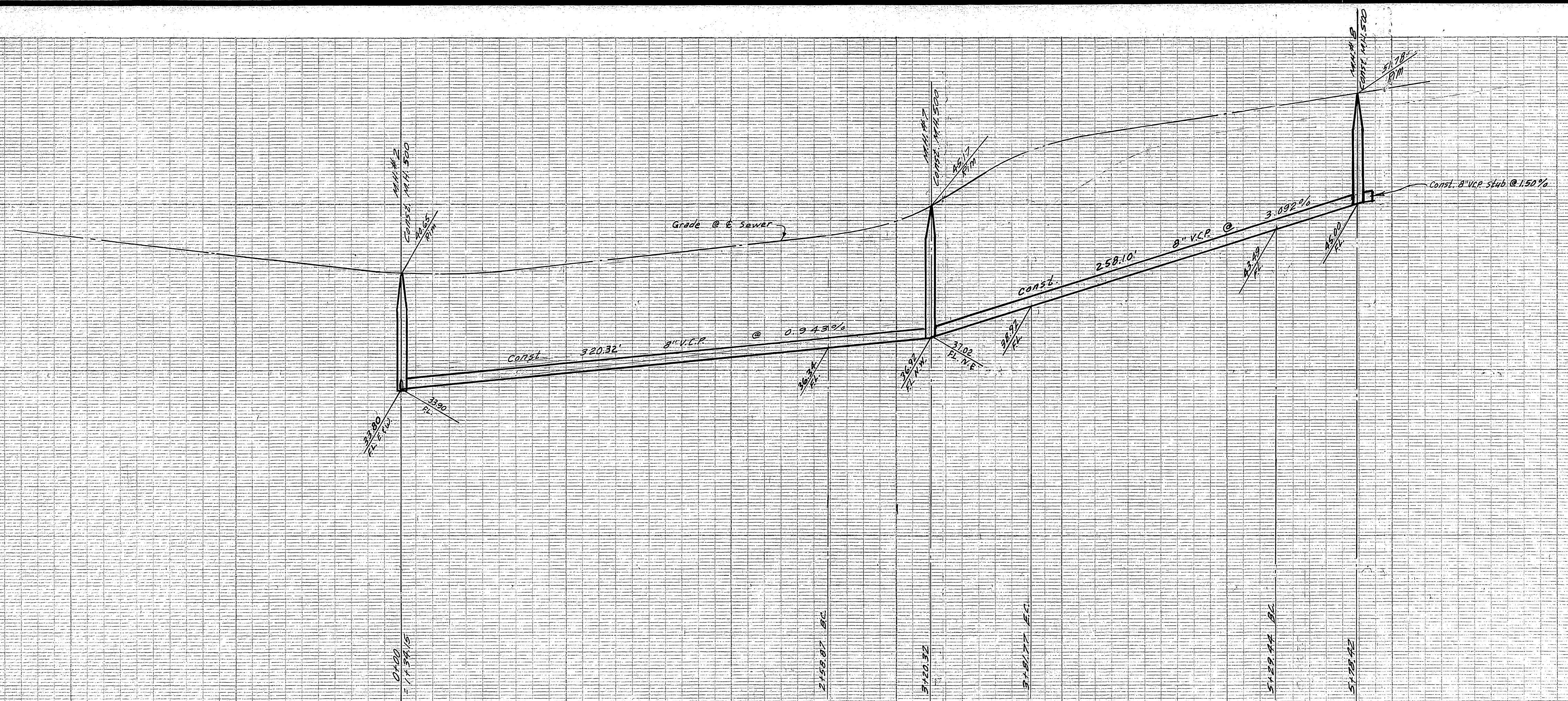
1. Construction shall be in accordance with the Standard Specifications for Public Works construction, 1973 edition, and City of Riverside Standard Drawings.
2. Location of wyes and laterals to be determined at the direction of the owner.
3. Manhole frames and covers to be set at existing or proposed grades.
4. Prior to construction of sewer, contractor shall expose existing sewer and verify its existing elevation and location.
5. It shall be the responsibility of the contractor to clear the right of way in accordance with the provisions of law as it affects each utility including irrigation lines and appurtenances and at no cost to the city.



SEE SHEET 2

ALBERT A. WEBB ASSOCIATES CIVIL ENGINEERS RIVERSIDE, CALIFORNIA APPROVED BY: <i>Albert A. Webb</i> DATE: 8/8/73 R.E. No. 9876		CITY OF RIVERSIDE, CALIFORNIA PUBLIC WORKS DEPARTMENT APPROVED BY: <i>Richard A. Cream</i> DATE: 11-1-73 CHIEF WATER UTILITY ENGINEER		ACCOUNT NO. DRAWING NUMBER 5-962
W.O. 73-187 FOR:		DESIGNED BY: <i>BEL</i> DRAWN BY: <i>BEL</i> CHECKED BY: <i>BM</i>		SHEET 1 OF 2 SCALE: 1" = 40' Horiz., 1" = 4' Vert.

SEWER PLAN AND PROFILE
 HYDE PARK CIRCLE
 MAYBROOK CIRCLE-NEWGATE COURT
 PRIVATE STREETS
 TRACT NO. 5311-1



SEE SHEET I

BENCH MARK

(G-7-A) Elev. 967.071, P.K. 1041' 4" in center of S.W. curb return @ Arlington & Victoria, C.P. F.B. 839/34

NOTE

see sheet 1 for General Notes.

APPROVED BY <i>Howard J. Creason</i> 11-1-73 CHIEF WATER UTILITY ENGINEER DATE		ACCOUNT No. DRAWING NUMBER 5-962	
APPROVED BY <i>[Signature]</i> DATE 8/8/73 R.E. No. 9876		CITY OF RIVERSIDE, CALIFORNIA PUBLIC WORKS DEPARTMENT SEWER PLAN AND PROFILE HYDE PARK CIRCLE MAYBROOK CIRCLE PRIVATE STREETS TRACT NO. 5311-1	
W.O. 73-187 FOR:		SHEET 2 OF 2 SCALE: 1" = 40' Horiz. 1" = 4' Vert.	
DESIGNED BY <i>BEL</i> DRAWN BY <i>BEL</i> CHECKED BY <i>BM</i>		DATE 12-4-73	