

# RIVERSIDE






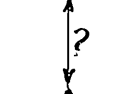

# CALIFORNIA

## PUBLIC WORKS DEPARTMENT

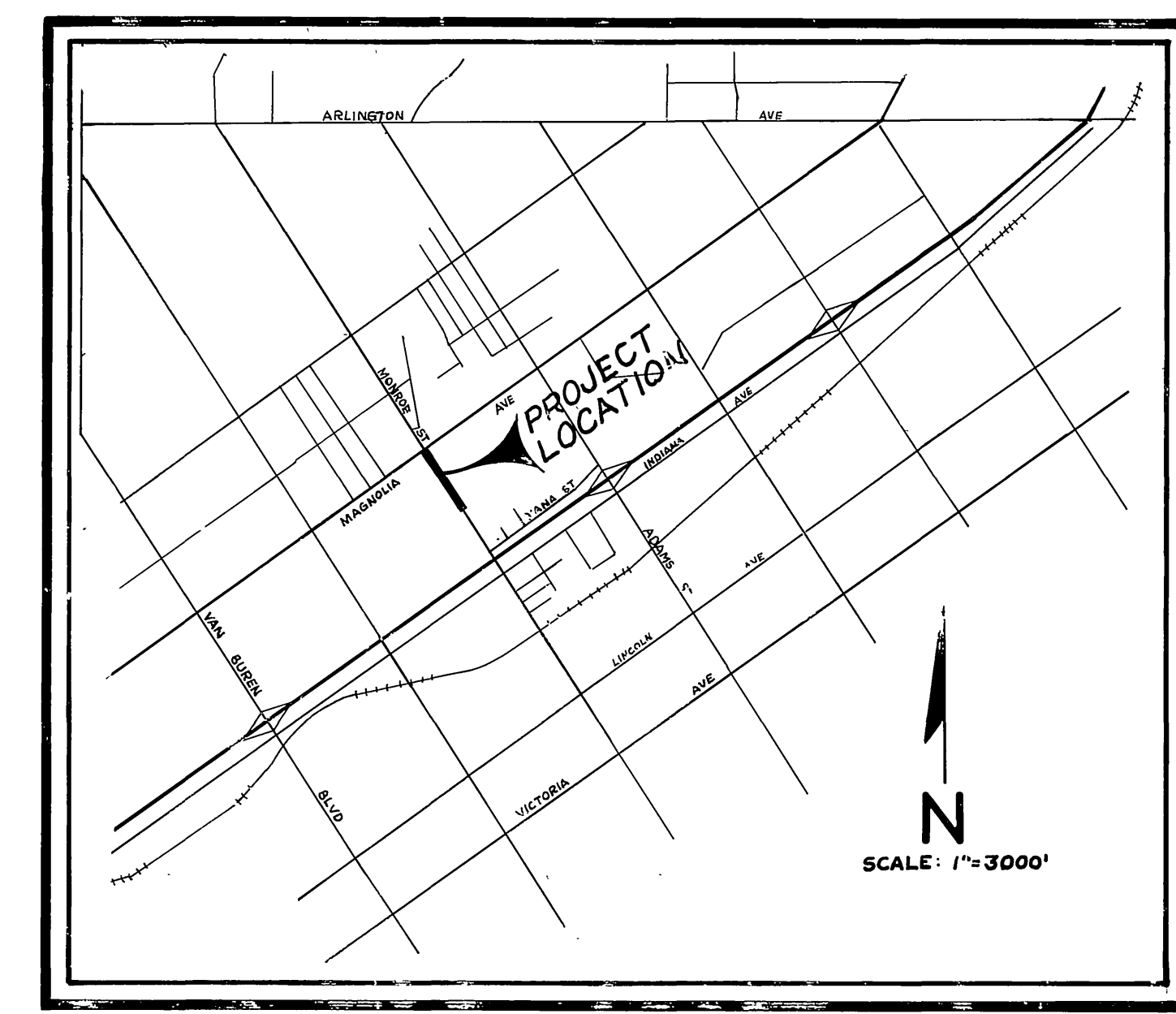
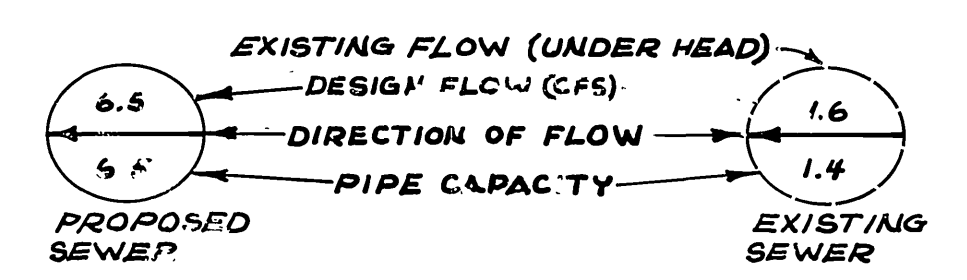
### MONROE TRUNK RELIEF SEWER MAGNOLIA TO DIANA

PROJECT LENGTH: 1600'

#### SPECIAL CONSTRUCTION NOTES

-  INSTALL TEE OR WYE PER STD. DWG. 562 SEE SPECIAL PROVISIONS
-  CONSTRUCT SEWER MANHOLE PER STD. DWG. 500 4' I.D.
-  CONSTRUCT SEWER MANHOLE PER STD. DWG. 500 5' I.D.
-  DEPTH TO TOP OF UTILITY UNKNOWN; HOWEVER INTERFERENCE WITH CONSTRUCTION IS NOT EXPECTED
-  CONSTRUCT SEWER CLEANOUT PER STD 560

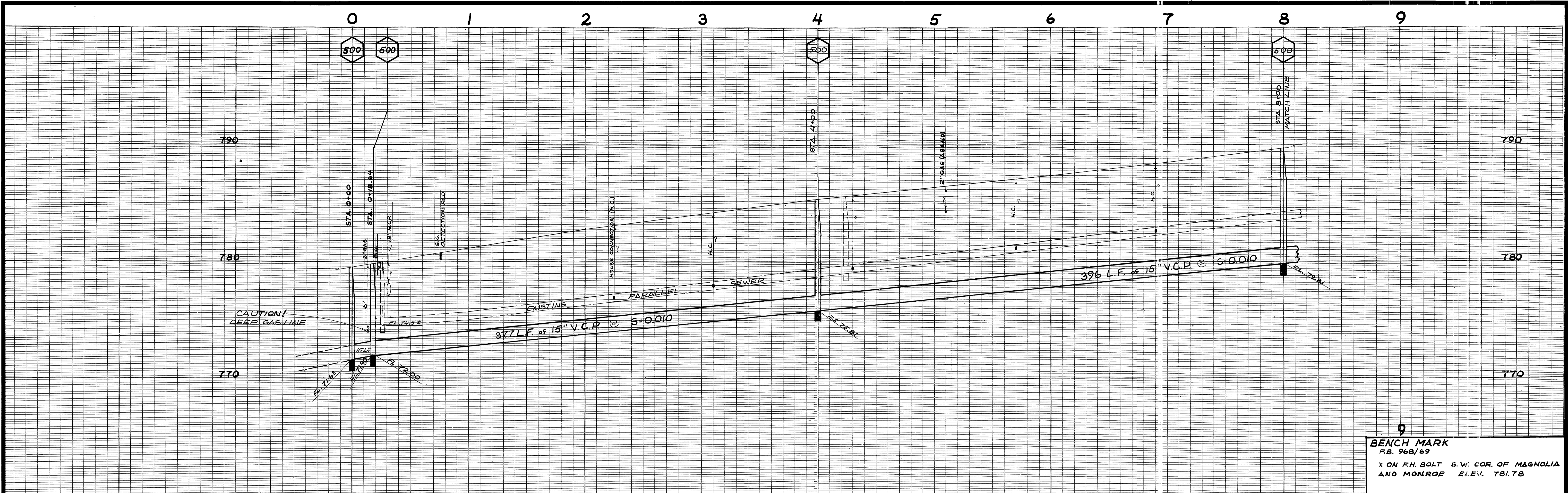
#### ENGINEERING NOTE



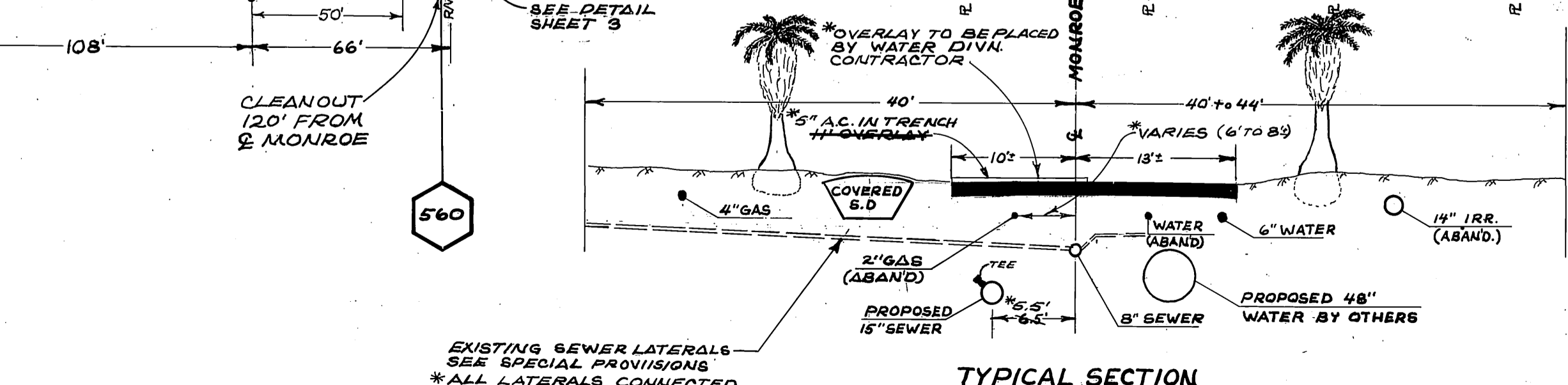
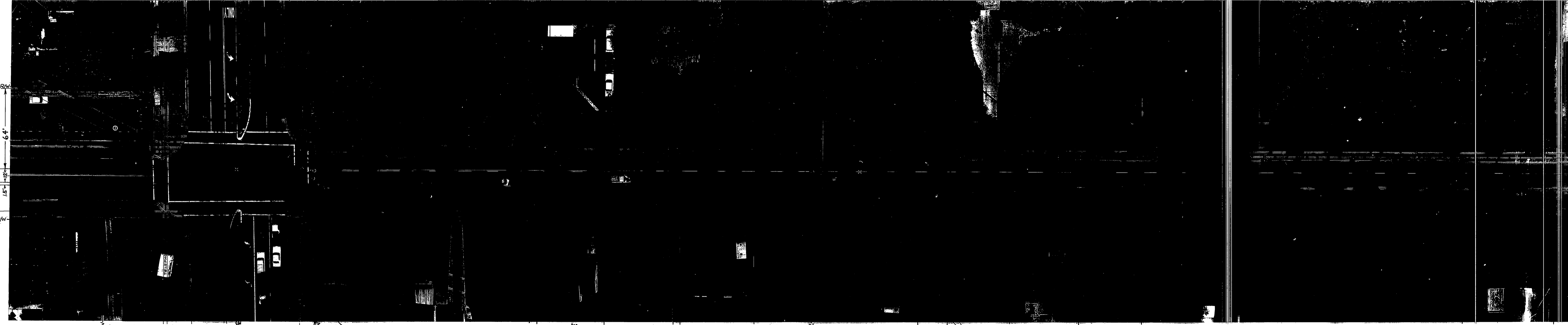
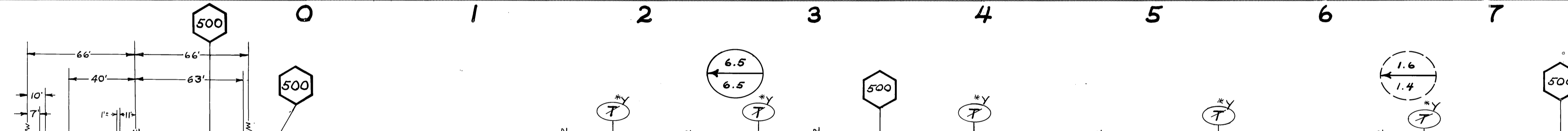
#### GENERAL CONSTRUCTION NOTES

1. CONSTRUCTION SHALL BE IN ACCORDANCE WITH STANDARD SPECIFICATIONS FOR PUBLIC WORKS CONSTRUCTION 1973 EDITION
2. FOR ALL SYMBOLS SEE STD. DWG. No. 1.
3. EXACT LOCATIONS OF EXISTING SEWER LATERALS ARE UNKNOWN
4. PIPE BEDDING, BACKFILL AND TRENCH RESURFACING SHALL BE IN ACCORDANCE WITH STD. DWG. No. 452 & No. 453 RESPECTIVELY

ASBUILT OF P.W. GRW.		ACCOUNT NO. 32-577-525	
<b>CITY OF RIVERSIDE</b>		<b>Monroe Trunk Relief Sewer</b>	
<b>PUBLIC WORKS DEPARTMENT</b>		<b>Magnolia To Diana</b>	
APPROVED BY PRINCIPAL ENGINEER <i>[Signature]</i>	APPROVED BY PUBLIC WORKS DIRECTOR <i>[Signature]</i>	DESIGNED BY R.S.G.	FILE NO.
PARK DEPARTMENT	DATE 6-11-74	DRAWN BY S.G.W.	SHEET 1 OF 3
TRAFFIC DIVISION		CHECKED BY S.C.W.	
CHIEF P.W. ENGINEER			

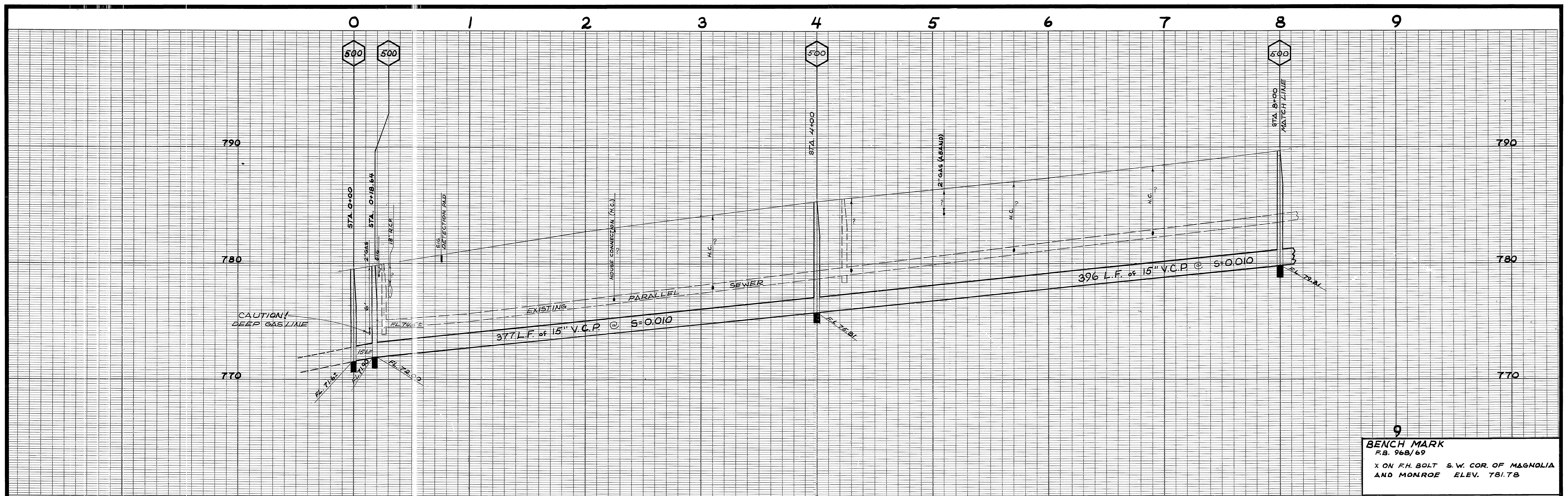


9  
**BENCH MARK**  
 F.B. 968/69  
 X ON F.H. BOLT S.W. COR. OF MAGNOLIA  
 AND MONROE ELEV. 781.78

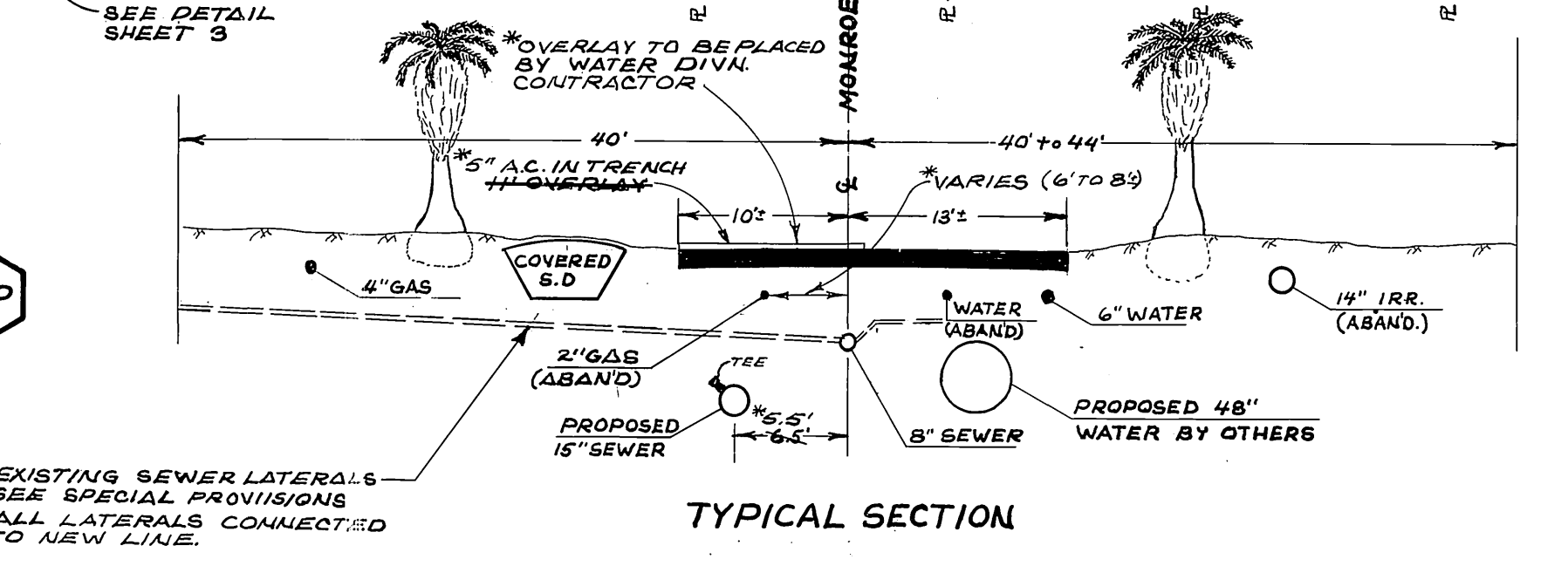
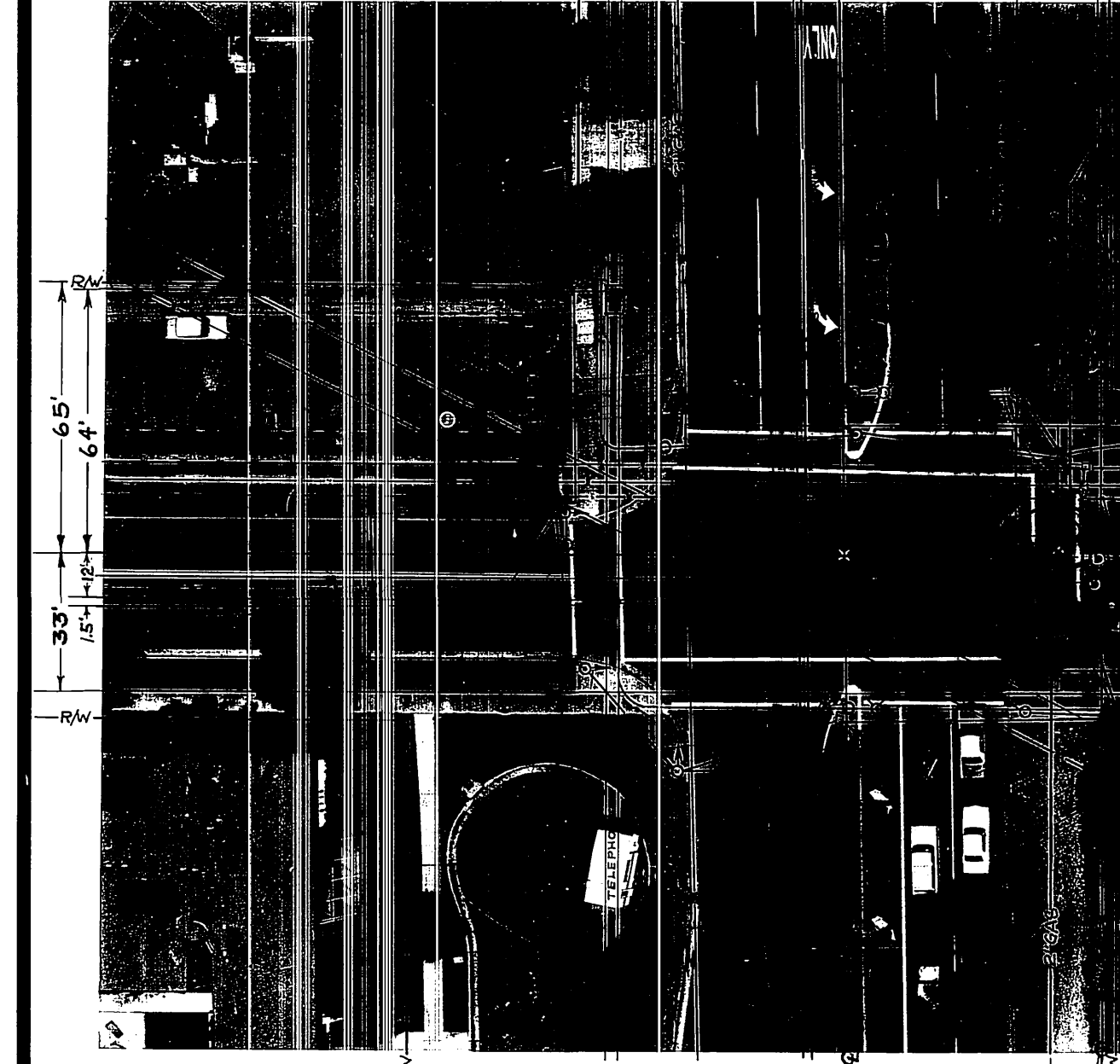
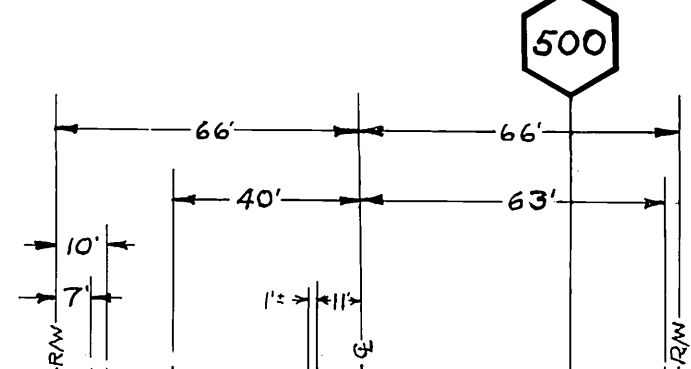
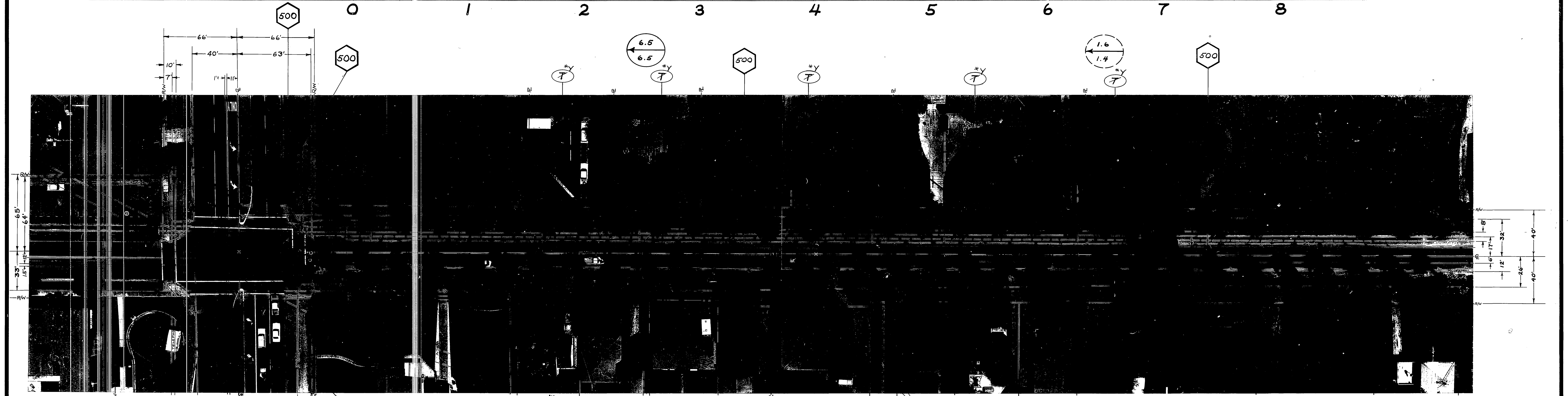


\*AS BUILT 10-3-74 G.R.W.

<b>CITY OF RIVERSIDE</b>		<b>Monroe Trunk</b>		ACCOUNT NO. 92-977-525
<b>PUBLIC WORKS DEPARTMENT</b>		<b>Relief Sewer</b>		
APPROVED BY		APPROVED BY		<b>S-964</b>
PRINCIPAL ENGINEER		PUBLIC WORKS DIRECTOR		
TRAFFIC DIVISION		DATE 6-17-74		
CHIEF P. W. ENGINEER		HORIZ. SCALE: 1" = 40'		
MARK	REVISIONS	APPR. DATE	VERT. SCALE: 1" = 4'	
DESIGNED BY: <i>LRW</i>	DRAWN BY: <i>G.R.W.</i>	CHECKED BY: <i>DRW</i>	FILE NO.	

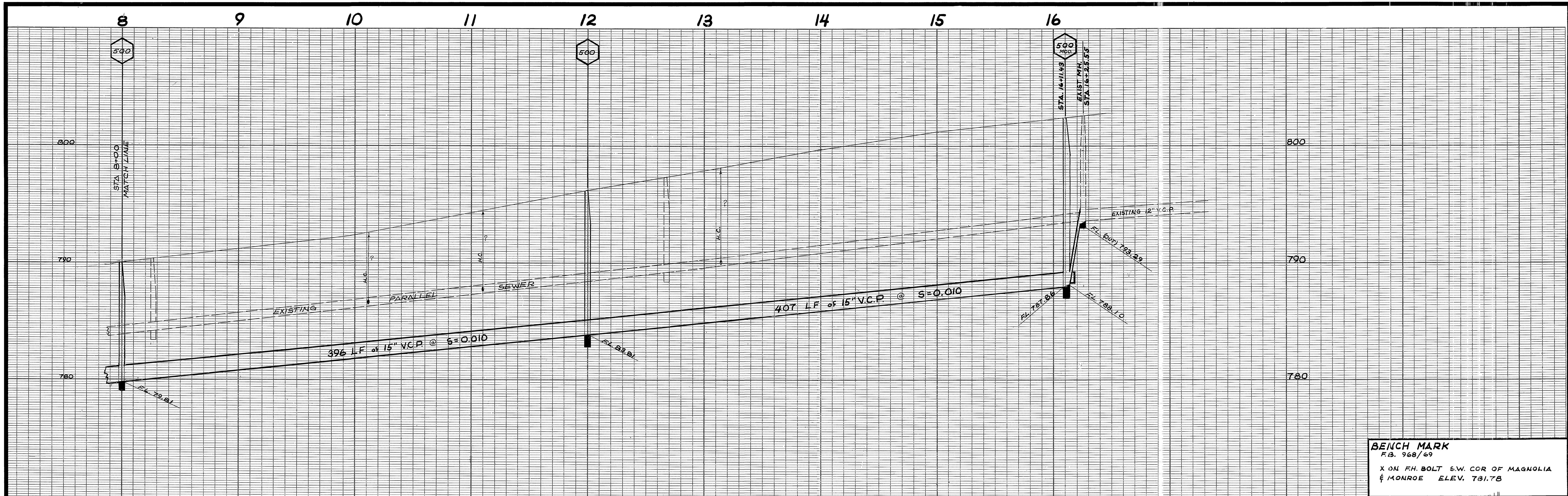


9  
**BENCH MARK**  
 F.B. 968/69  
 X ON F.H. BOLT S.W. COR. OF MAGNOLIA  
 AND MONROE ELEV. 781.78

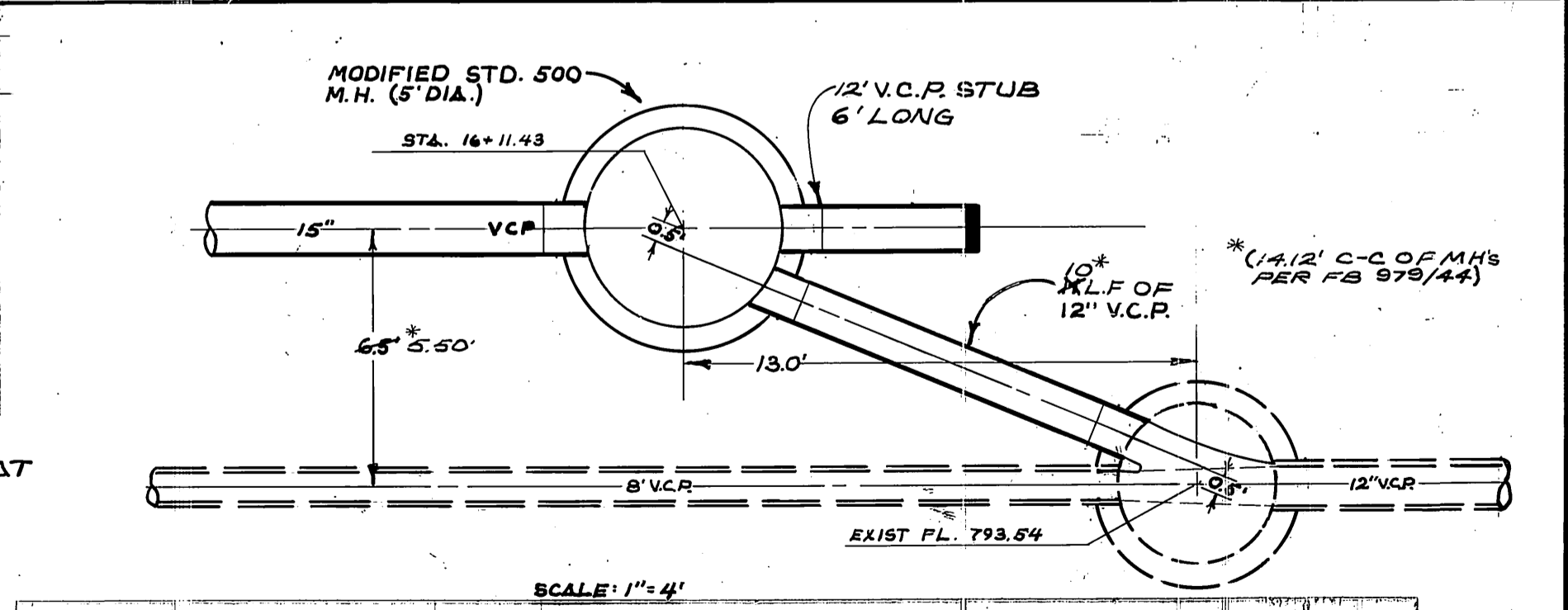
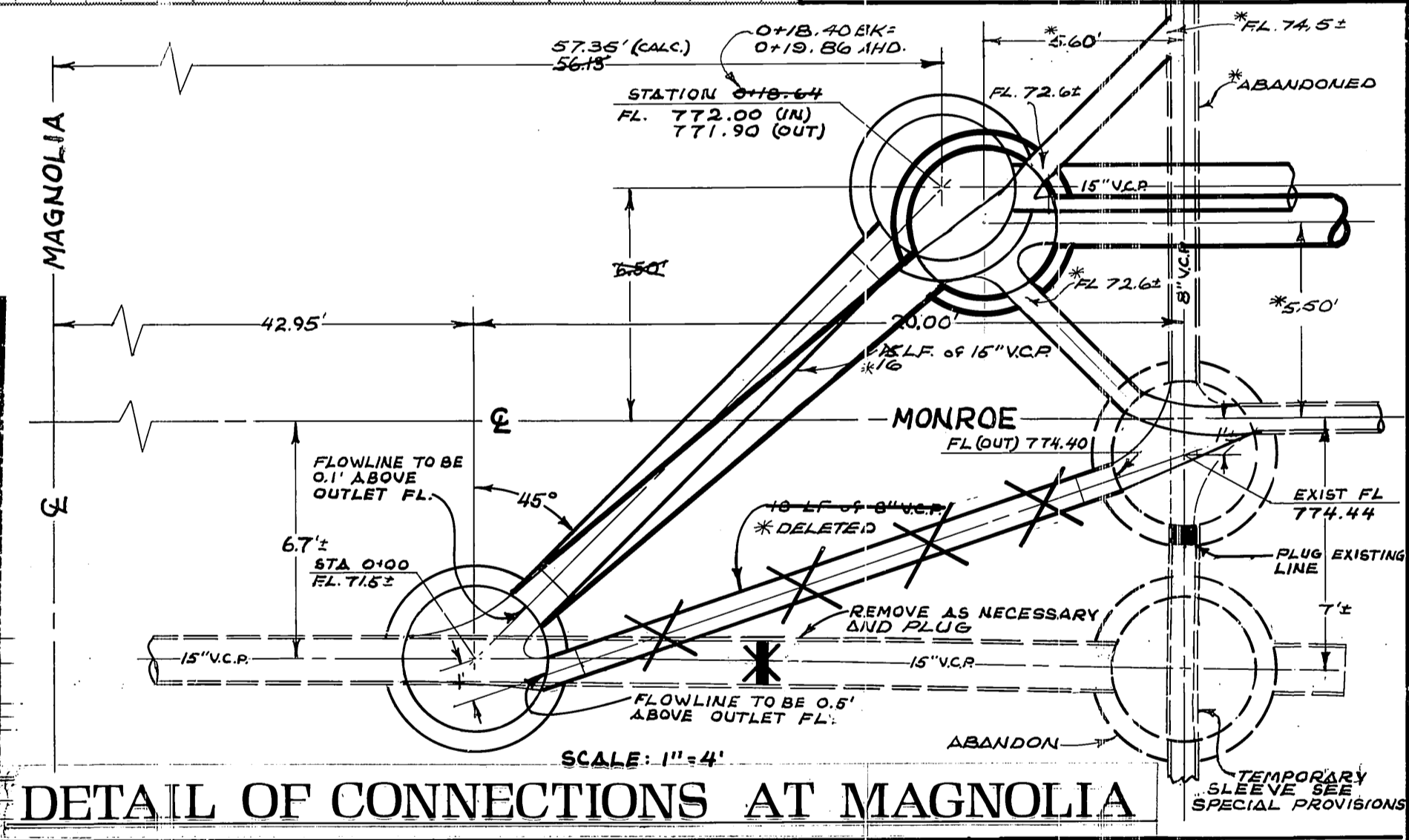
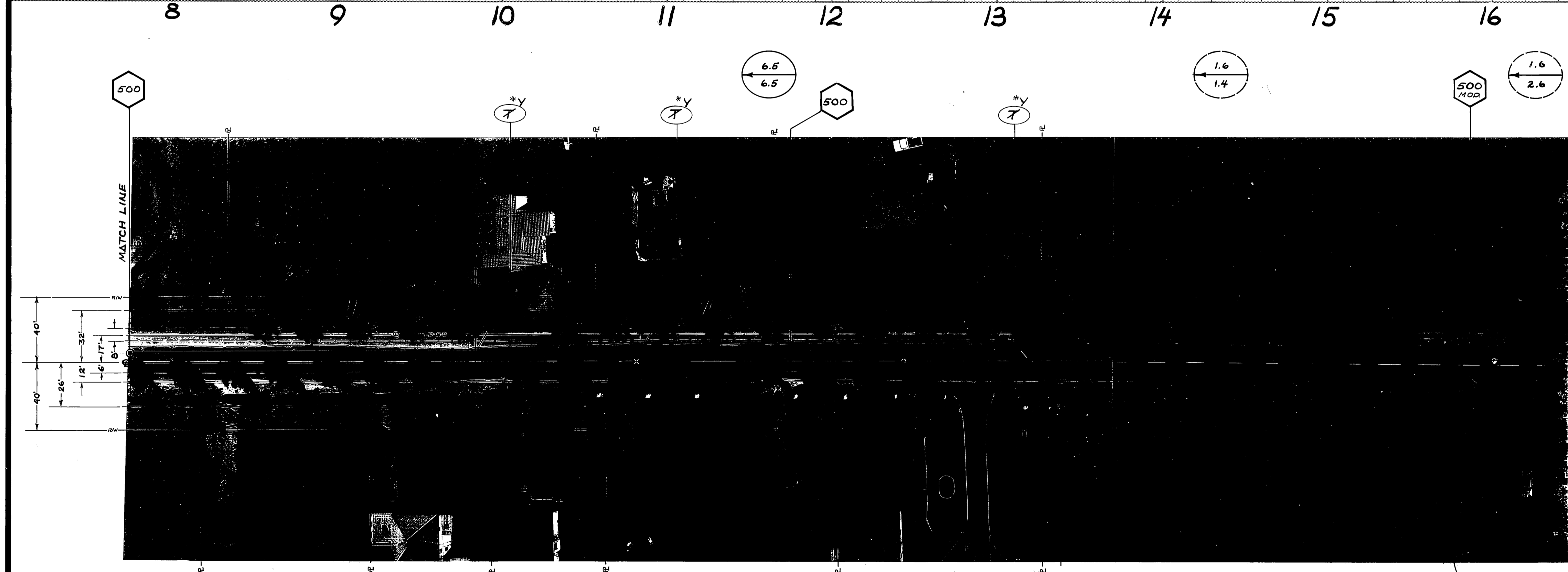


\*AS BUILT 10-3-74 G.R.W.

<b>CITY OF RIVERSIDE</b> <b>PUBLIC WORKS DEPARTMENT</b>		<b>Monroe Trunk</b> <b>Relief Sewer</b> Magnolia To Diana		ACCOUNT NO. 32-57-7-523 <b>S-964</b> SHEET 2 OF 3 FILE NO.
APPROVED BY PRINCIPAL ENGINEER PARK DEPARTMENT TRAFFIC DIVISION CHIEF P.W. ENGINEER	DATE 6/14/74	APPROVED BY <i>[Signature]</i> PUBLIC WORKS DIRECTOR	DATE 6-11-74	HORIZ. SCALE: 1" = 40' VERT. SCALE: 1" = 4'
DESIGNED BY L.S.G.	DRAWN BY G.R.W.	CHECKED BY D.H.	REVISIONS APPR. DATE	MARK

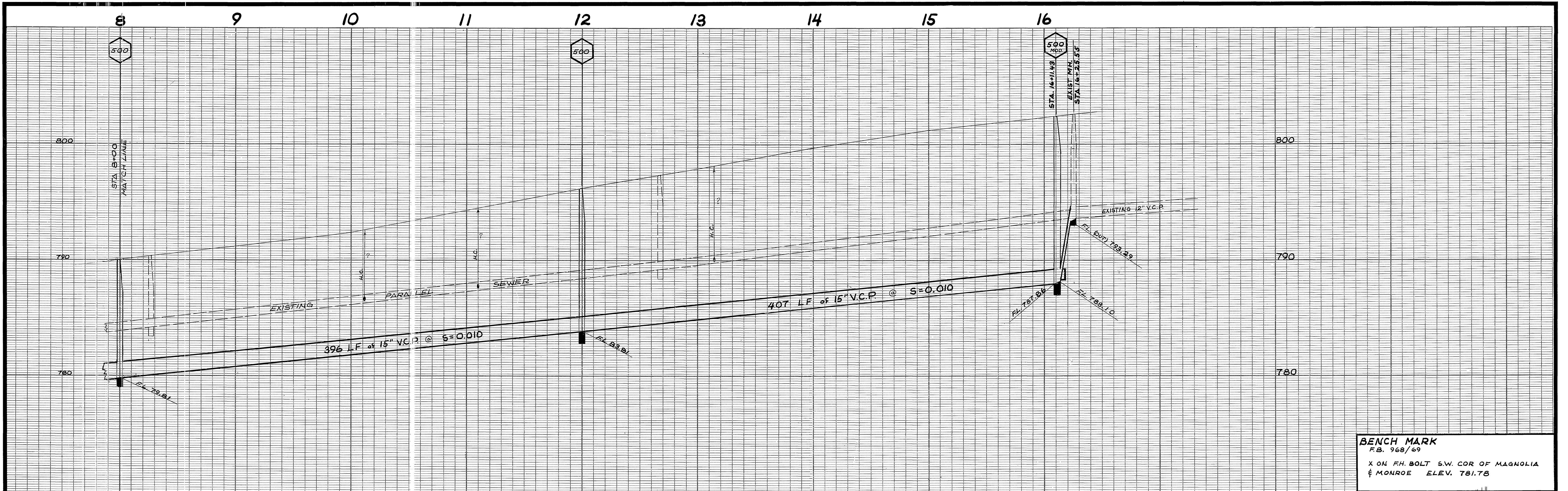


**BENCH MARK**  
 F.B. 968/69  
 X ON FH. BOLT S.W. COR OF MAGNOLIA  
 & MONROE ELEV. 781.78

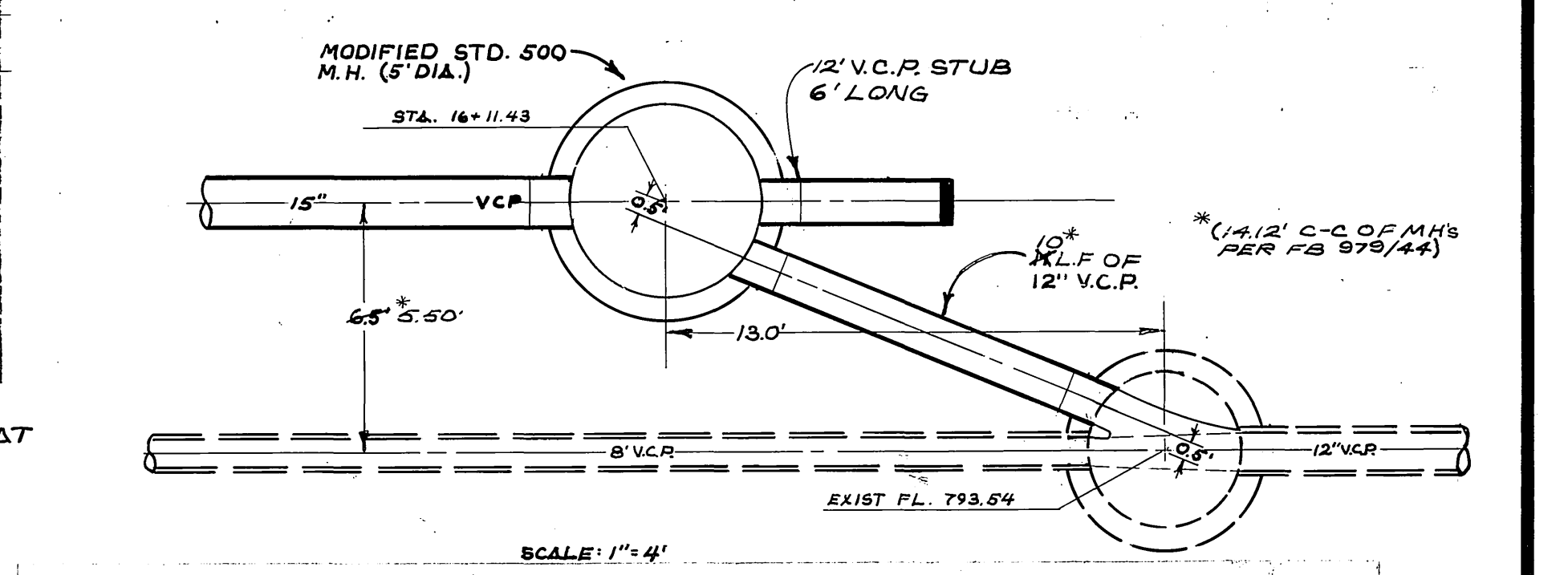
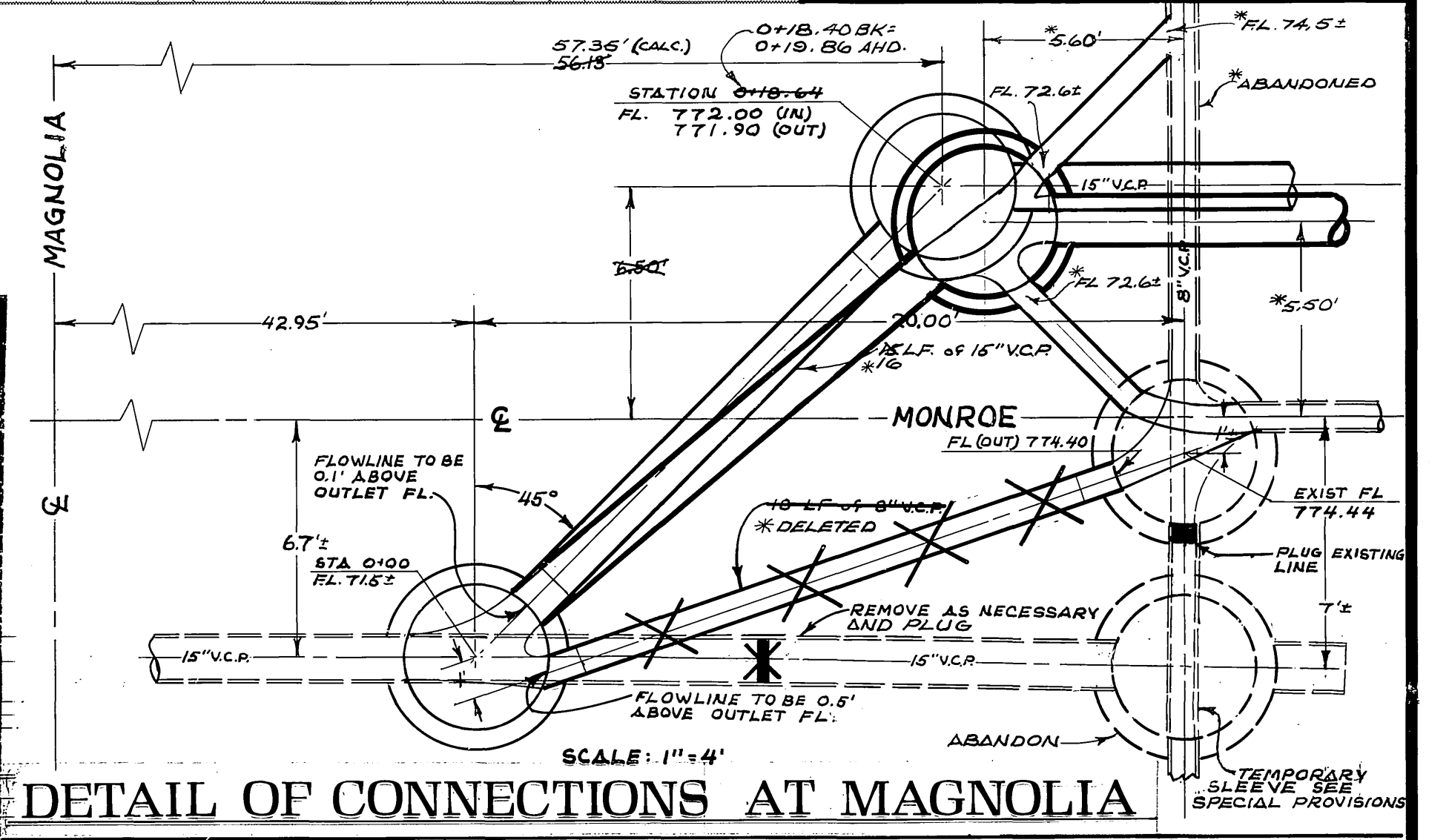
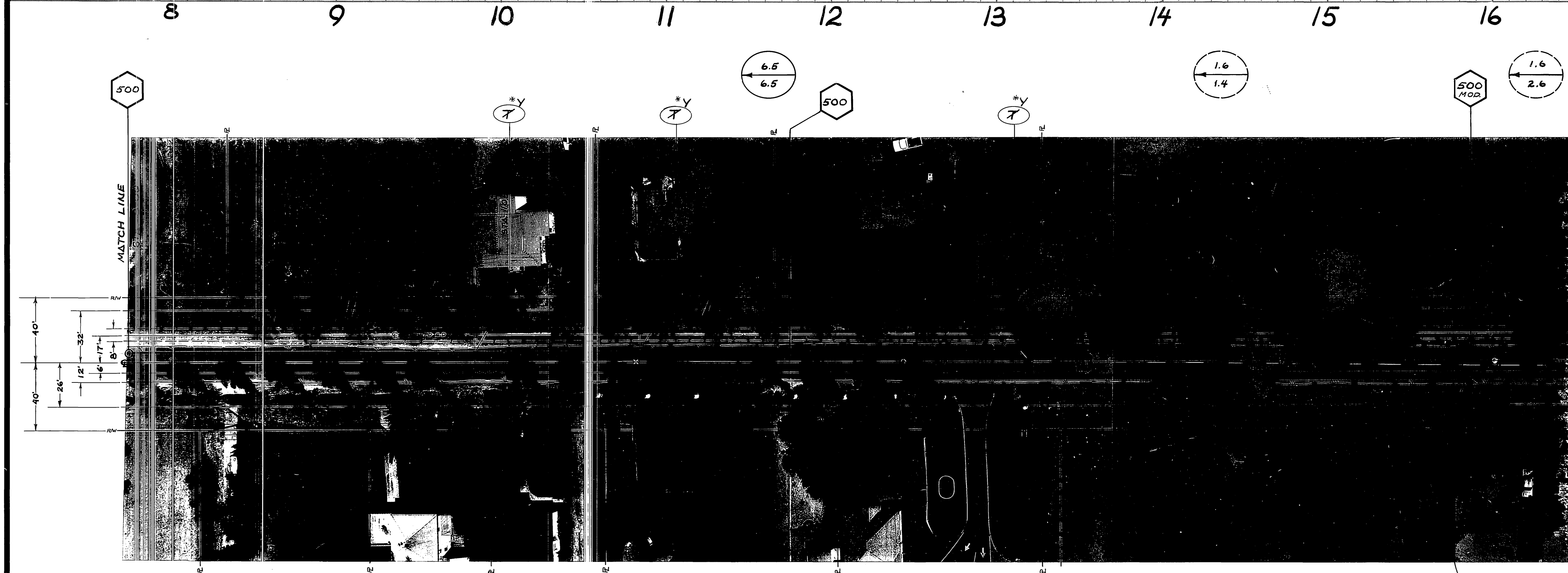


\*AS BUILT 10-3-74 GRW.

<b>CITY OF RIVERSIDE</b>		<b>Monroe Trunk</b>		ACCOUNT NO. 32-577-525	
PUBLIC WORKS DEPARTMENT		<b>Relief Sewer</b>		S-964	
Magnaolia To Diana		SHEET 3 OF 3		FILE NO.	
APPROVED BY PRINCIPAL ENGINEER <i>[Signature]</i> 6/14 PARK DEPARTMENT TRAFFIC DIVISION CHIEF P. W. ENGINEER <i>[Signature]</i> 6/14		APPROVED BY PUBLIC WORKS DIRECTOR <i>[Signature]</i> DATE 6-17-74		HORIZ. SCALE: 1" = 40' VERT. SCALE: 1" = 4'	
DESIGNED BY <i>[Signature]</i>	REVISIONS	APPR. DATE	CHECKED BY <i>[Signature]</i>		



**BENCH MARK**  
 F.B. 968/69  
 X ON F.H. BOLT S.W. COR OF MAGNOLIA  
 & MONROE ELEV. 781.78



\*AS BUILT 10-3-74 GRW.

<b>CITY OF RIVERSIDE</b> PUBLIC WORKS DEPARTMENT		<b>Monroe Trunk Relief Sewer</b> Magnolia To Diana		ACCOUNT NO. 32-577-525
APPROVED BY PRINCIPAL ENGINEER PARK DEPARTMENT TRAFFIC DIVISION CHIEF P.W. ENGINEER	APPR. DATE 6/14	APPROVED BY PUBLIC WORKS DIRECTOR	DATE 6-17-74	<b>S-964</b> SHEET 3 OF 3
DESIGNED BY DRAWN BY CHECKED BY	REVISIONS	MARK	HORIZ. SCALE: 1" = 40' VERT. SCALE: 1" = 4'	FILE NO.