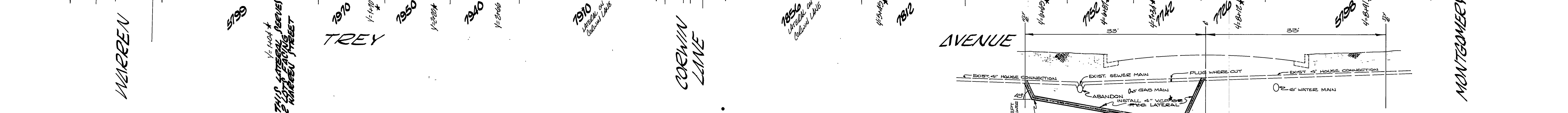
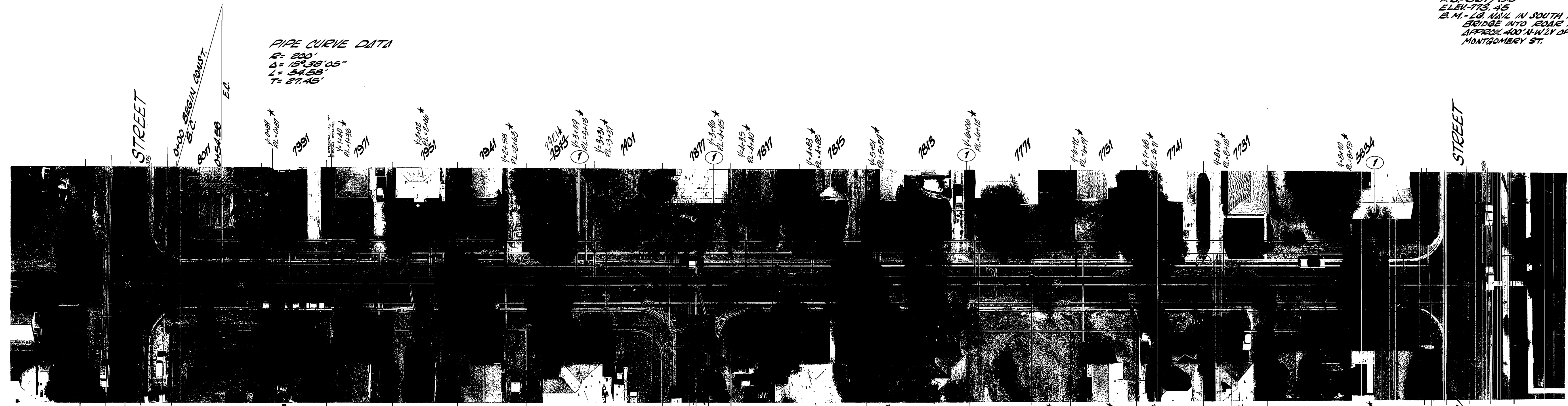


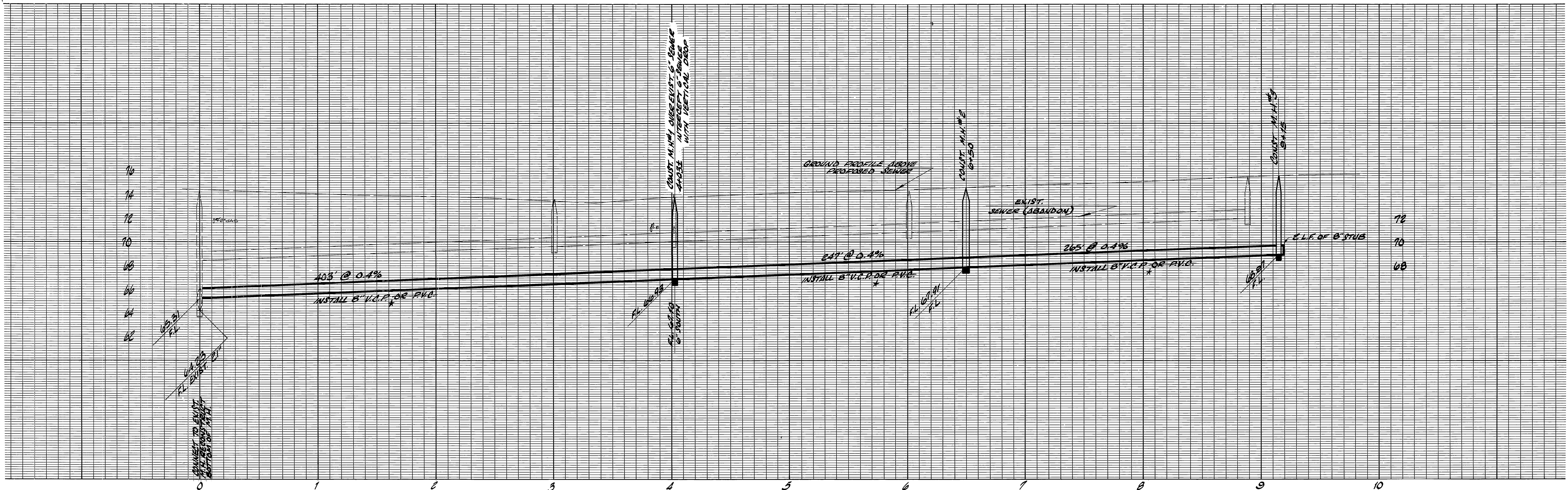
18-967/39
 ELEV. 77.85
 E.M. - LG. MANH. IN SOUTH H.W. OF
 BRIDGE INTO ROAD PARKING LOT
 APPROX. 400' N.W. OF N. END
 MONTGOMERY ST.

PIPE CURVE DATA
 R = 200'
 Δ = 153° 38' 05"
 L = 34.08'
 T = 27.45'



- CONSTRUCTION NOTES**
- CONSTRUCTION SHALL BE IN ACCORDANCE WITH STANDARD SPECIFICATIONS FOR PUBLIC WORKS CONSTRUCTION, 1973 EDITION.
 - THE FOLLOWING STANDARD DRAWINGS APPLY:
 NO. 452 FOR PIPE BEDDING AND BACKFILL
 NO. 453 FOR RESURFACING AND BACKFILL
 NO. 500 FOR MANHOLES
 NO. 502 FOR GROUND MANHOLES
 NO. 503 FOR MANHOLE CASTINGS
 NO. 502 FOR INSTALLING "T"s OR "V"s, AND FOR SEWER LATERALS
 - CONTRACTOR TO LOCATE ALL EXIST LATERALS ON N.W. SIDE OF STREET AT 10 FEET TO LIVING SIDE OF PIPE. RECONSTRUCT ALL EXIST LATERALS ON BOTH SIDES OF THE STREET, REGARDING LOCATION OF EXIST. LATERALS SHOWN SEE SPECIAL PROVISIONS.
 - ① INDICATES ABANDON EXIST. SEWER MAIN AND MANHOLES.

CITY OF RIVERSIDE, CALIFORNIA PUBLIC WORKS DEPARTMENT		TREY AVENUE SEWER REPLACEMENT BETWEEN WARREN AND MONTGOMERY STREETS		ACCOUNT No. 32-277-5350 DRAWING NUMBER S-965 SHEET 1 OF 1
APPROVED BY PRINCIPAL ENGINEER PARK DEPARTMENT TRAFFIC DIVISION CHIEF PUB. WKS. ENGR.	BY DATE 3/22/74	APPROVED BY DIRECTOR OF PUBLIC WORKS DATE 4-5-74	SCALE: HORIZ. 1"=40' VERT. 1"=4'	
DESIGNED BY DRAWN BY CHECKED BY	REVISIONS APPR. DATE	MARK		



PIPE CURVE DATA
 R=200'
 Δ=15°36'05"
 L=34.68'
 T=27.46'

FB-967/59
 ELEV. 773.45
 B.M. - LG. NAIL IN SOUTH H.W. OF
 BRIDGE INTO ROAD PARKING LOT
 APPROX. 400' N-W/2 OF N. END
 MONTGOMERY ST.



WARREN STREET
 0+00 BEGIN CONST.
 0+01
 0+54.59
 7999
 7997
 7995
 7993
 7991

TREY AVENUE
 7970
 7950
 7940
 7930

COE WIN LANE
 7850
 7840
 7830
 7820

MONTGOMERY STREET
 7760
 7740
 7720
 7700
 7680
 7660

CONSTRUCTION NOTES

- CONSTRUCTION SHALL BE IN ACCORDANCE WITH STANDARD SPECIFICATIONS FOR PUBLIC WORKS CONSTRUCTION, 1973 EDITION.
- THE FOLLOWING STANDARD DRAWINGS APPLY:
 NO. 45E FOR PIPE BEDDING IF V.C.P. IS USED
 NO. 45B FOR RESURFACING AND BACKFILL
 NO. 500 FOR MANHOLES
 NO. 503 FOR JOINT MANHOLES
 NO. 540 FOR MANHOLE CASTINGS
 NO. 502 FOR INSTALLING T'S, S, AND FOR SEWER LATERALS
- CONTRACTOR TO LOCATE ALL EXIST LATERALS ON N/2V SIDE OF STREET AT 12' PACE TO LIVING ST. PIPE. RECONNECT ALL EXIST. LATERALS ON BOTH SIDES OF THE STREET, REGARDING LOCATION OF EXIST. LATERALS SHOWN SEE SPECIAL PROVISIONS.
- ① INDICATES ABANDON EXIST. SEWER MAIN AND MANHOLES.

TYPICAL SEWER LATERAL RECONNECTIONS

CITY OF RIVERSIDE, CALIFORNIA PUBLIC WORKS DEPARTMENT			
APPROVED BY	BY	DATE	APPROVED BY
PRINCIPAL ENGINEER	R. J. [Signature]	3/74	[Signature]
PARK DEPARTMENT			DIRECTOR OF PUBLIC WORKS
TRAFFIC DIVISION			
CHIEF PUB. WORKS ENGR.			
MARK	REVISIONS	APPR. DATE	DATE
			4-5-74
DESIGNED BY		DRAWN BY	
CHECKED BY			

TREY AVENUE SEWER REPLACEMENT
 BETWEEN WARREN AND MONTGOMERY STREETS

ACCOUNT No. 32-577-5250
 DRAWING NUMBER
S-965
 SHEET 1 OF 1

SCALE: HORIZ. 1"=40' VERT. 1"=4'