

F.B. 004-43
 ELEV. 701.24
 B.M. SPL IN S.E. CORNER REBUIEN
 HARDY/BOUF BALTON

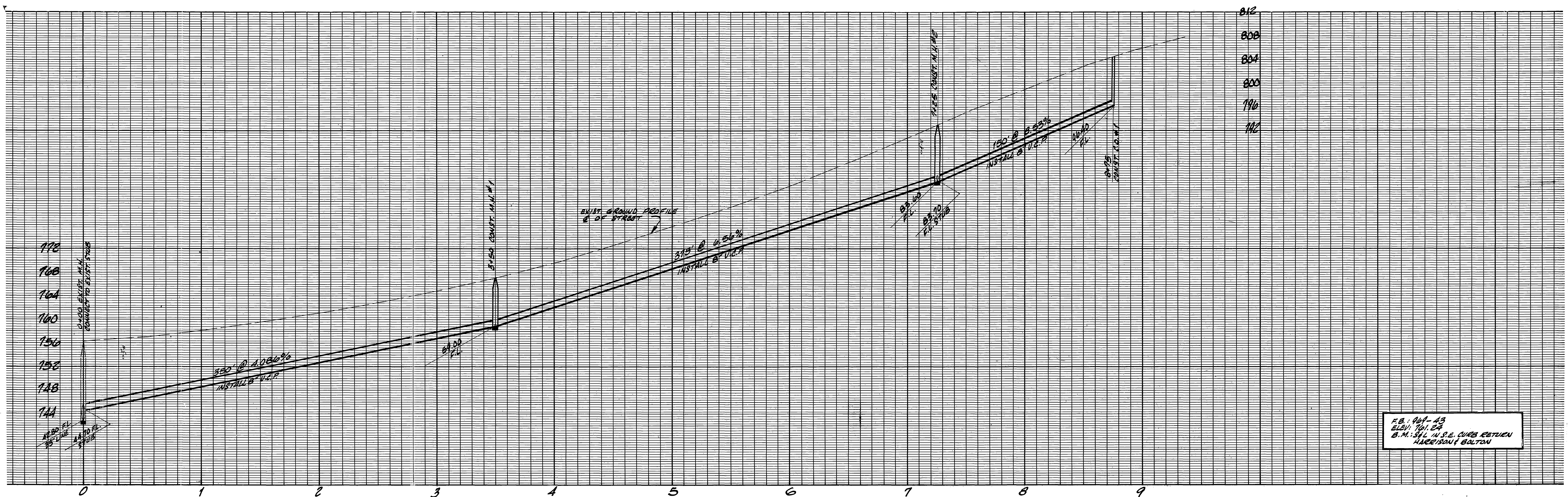


CONSTRUCTION NOTES

- CONSTRUCTION SHALL BE IN ACCORDANCE WITH STANDARD SPECIFICATIONS FOR PUBLIC WORKS CONSTRUCTION, 1973 EDITION.
- THE FOLLOWING STANDARD DRAWINGS APPLY:
 NO. 452 FOR BEDDING OF PIPE
 NO. 453 FOR RESURFACING AND BACKFILL
 NO. 500 FOR MANHOLES
 NO. 540 FOR MANHOLE CASTINGS
 NO. 560 FOR SEWER CLEANOUT
 NO. 562 FOR INSTALLING "T" OR "Y" FOR SEWER LATERALS
- AN "R" INDICATES THAT PROPERTY OWNER HAS REQUESTED LOCATION OF LATERAL AT LOCATION SHOWN. LETTER IS IN FILE.
- CONSTRUCT "T", OR AT OPTION OF CONTRACTOR, "Y" LOCATION SHOWN THIS:
- SOIL BORINGS WERE TAKEN TO DEPTH OF 12 FEET AT STAS. 5+15, 7+25, 8+75

APPROVED BY:
H.L. Crosson by *gjk* 6-25-74
 public utilities department - water date

| | | | | |
|--|---|--|---|--|
| CITY OF RIVERSIDE, CALIFORNIA PUBLIC WORKS DEPARTMENT | | TOMLINSON AVENUE ASSESSMENT DISTRICT (SEWER) | | ACCOUNT No. 84-451-644 DRAWING NUMBER 3-971 |
| APPROVED BY PRINCIPAL ENGINEER PARK DEPARTMENT | BY <i>[Signature]</i> DATE 7-10-74 | APPROVED BY DIRECTOR OF PUBLIC WORKS | SELMA AVENUE TO 800' WLY OF ALCAZAR AVENUE | |
| MARK | REVISIONS | APPR. DATE | SCALE: HORIZ. 1"=40' | VERT. 1"=8' |
| DESIGNED BY <i>[Signature]</i> | | DRAWN BY <i>[Signature]</i> | | CHECKED BY <i>[Signature]</i> |



F.B.: 904-43
 ELEV: 701.23
 B.M.: 541 IN S.E. CURB ESTUEN
 HARRISON & BALTON



CONSTRUCTION NOTES

- CONSTRUCTION SHALL BE IN ACCORDANCE WITH STANDARD SPECIFICATIONS FOR PUBLIC WORKS CONSTRUCTION, 1973 EDITION.
- THE FOLLOWING STANDARD DRAWINGS APPLY:
 NO. 452 FOR BEDDING OF PIPE
 NO. 453 FOR RESURFACING AND BACKFILL
 NO. 500 FOR MANHOLES
 NO. 540 FOR MANHOLE CASTINGS
 NO. 560 FOR SEWER LAYOUT
 NO. 562 FOR INSTALLING "T"'S OR "Y"'S FOR SEWER LATERALS
- AN "R" INDICATES THAT PROPERTY OWNER HAS REQUESTED LOCATION OF LATERAL AT LOCATION SHOWN. LETTER IS IN FILE.
- CONSTRUCT "T", OR AT OPTION OF CONTRACTOR, A "Y" LOCATION SHOWN THIS:
- SOIL BORINGS WERE TAKEN TO DEPTH OF 12 FEET AT STA. 5+15, 7+25, 8+75

APPROVED BY:
H.L. Crosson by *gab* 6-25-74
 public utilities department - water date

| | | | | | |
|--|--|-----------------------|-------------|--------------------------|--|
| DESIGNED BY: <i>WMS</i> | | DRAWN BY: <i>ZMS</i> | | CHECKED BY: | |
| CITY OF RIVERSIDE, CALIFORNIA PUBLIC WORKS DEPARTMENT | | | | | |
| APPROVED BY: | | BY DATE: | | APPROVED BY: | |
| PRINCIPAL ENGINEER | | <i>RWD 6/28</i> | | DIRECTOR OF PUBLIC WORKS | |
| TRAFFIC DIVISION | | CHIEF PUB. WKS. ENGR. | | DATE | |
| MARK | | REVISIONS | | APPR. DATE | |
| 7.9 | | 7.9 | | 7-10-74 | |
| SCALE: HOR. 1"=40' | | | VERT. 1"=8' | | |
| ACCOUNT No. 84-451-644 | | | | DRAWING NUMBER | |
| TOMLINSON AVENUE ASSESSMENT DISTRICT (SEWER) | | | | S-971 | |
| SELMA AVENUE TO 800' W/4 OF ALCAZAR AVENUE | | | | SHEET 1 OF 1 | |