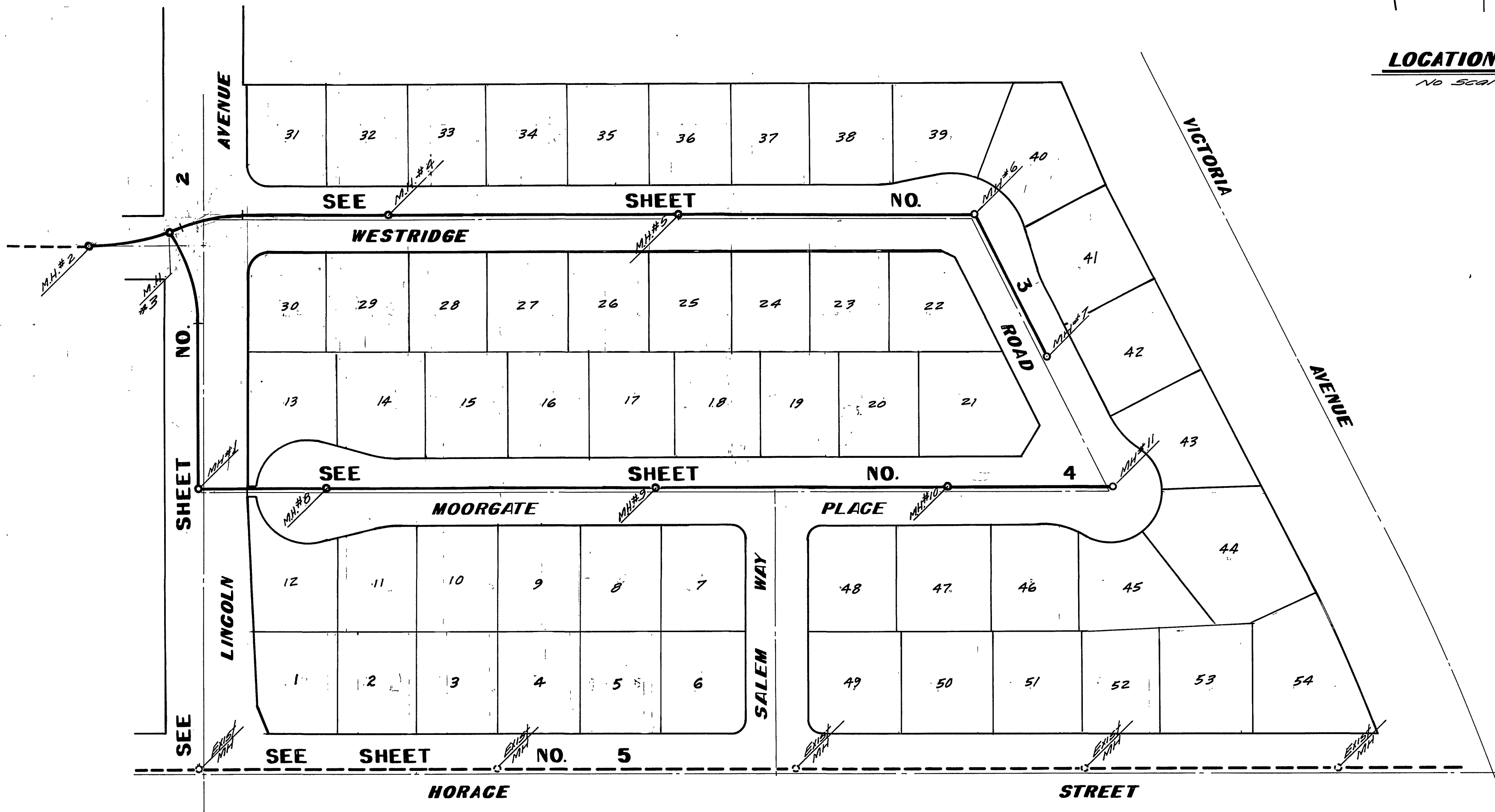


LOCATION MAP
No Scale



INDEX MAP
No Scale

GENERAL NOTES

1. Construction shall be in accordance with the Standard Specifications for Public Works Construction, 1964 Edition, and City of Riverside Standard Drawings.
2. It shall be the responsibility of the contractor to clear the right of way in accordance with the provisions of the law as it affects each utility including irrigation lines and appurtenances and at no cost to the City.
3. Pipe shall be bedded per Case I, Standard Drawing No. 522, unless otherwise specified on plans.
4. Location of wyes and laterals to be determined at the direction of the owner.
5. All stubs and laterals to be constructed in accordance with Standard Drawing No. 522. Stubs shall be plugged and capped.
6. Manhole frames and covers to be set as noted in profile by sewer contractor after final paving of street.
7. Laterals are to be 4" and extended to property line.
8. Prior to construction of sewer, contractor is to expose existing sewer and contact the Engineer for verification of existing elevations.

NOTICE TO CONTRACTOR

The existence and location of underground utility pipes or structures shown on these plans are obtained by a search of the available records. To the best of our knowledge, there are no existing utilities except as shown on these plans.

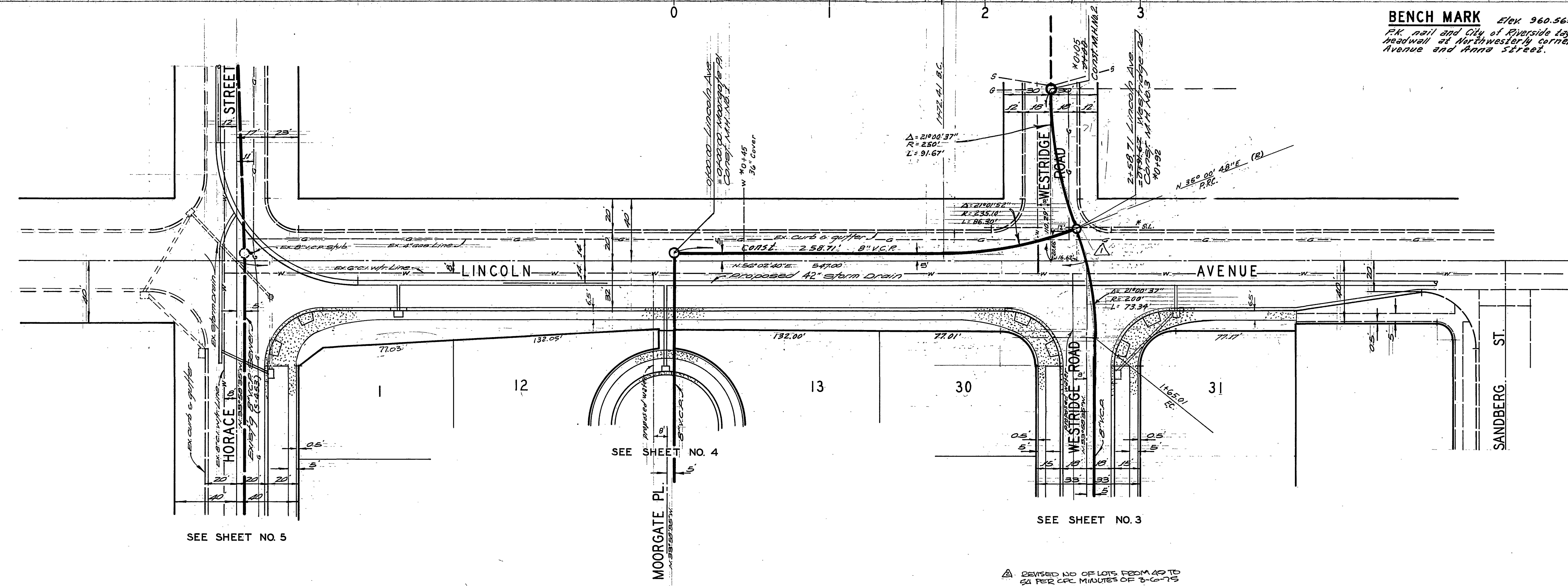
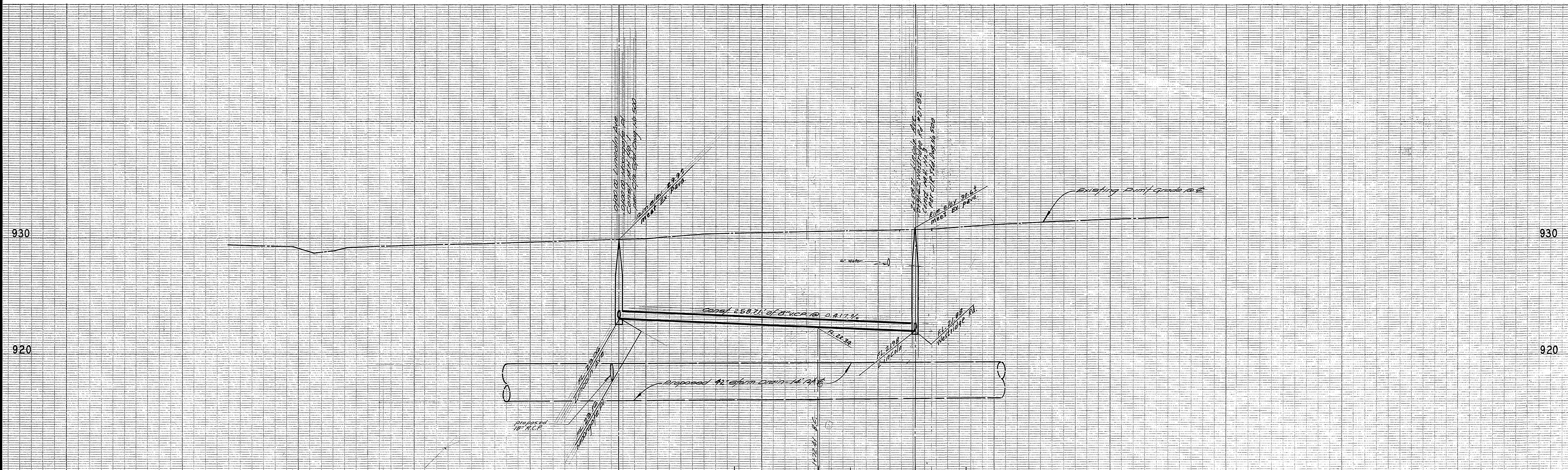
The Contractor is required to take due precautionary measures to protect the utility lines shown and any other lines not of record or not shown on these plans.

BENCH MARK

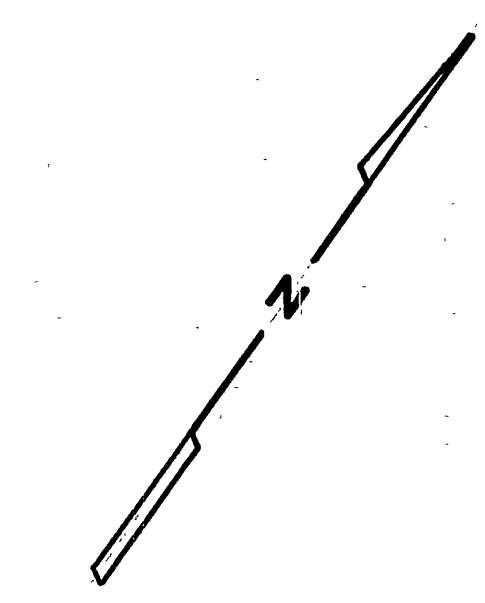
RR nail and City of Riverside tag in corner roadway of Northwestern corner Victoria Avenue and Main Street.
Elevation: 960.565.

Δ REVISION USE OF LOTS FROM 49 TO 54 PER CPE MINUTES OF 3-16-75

ALBERT A. WEBB ASSOCIATES CIVIL ENGINEERS RIVERSIDE, CALIFORNIA APPROVED BY: <i>Carl N. Webb</i> 4/12/74 R.E. NO. 9876		CITY OF RIVERSIDE, CALIFORNIA DEPARTMENT OF PUBLIC WORKS APPROVED BY: <i>Howard J. Cramer</i> 1-18-74 Chief Water Utility Engineer Date		PROJECT NO. S-974	
DESIGNED BY: <i>BEZ</i> DRAWN BY: <i>ELT</i> CHECKED BY: <i>...</i>		APPROVED BY: <i>...</i> DATE: 6-14-74 OFFICE ENGINEER: <i>...</i> DATE: 2/29 PARK DEPARTMENT: <i>...</i> TRAFFIC DIVISION: <i>...</i> ASSISTANT CITY ENG.: <i>...</i> DATE: 6-13		*AS BUILT 8-76 KPT SEWER PLAN AND PROFILE INDEX TRACT NO. 5487 SCALE: AS SHOWN	
W.O. 73-46 FOR: <i>Hollenbeck Dev. Co.</i> F.B. 1132		REVISIONS: <i>...</i>		SHEET 1 OF 5 73-46 B	



BENCH MARK Elev. 960.565
 F.R. nail and City of Riverside tag in culvert
 headwall at Northwesterly corner Victoria
 Avenue and Anna Street.



See sheet 1 of 5 for
 General Construction notes.

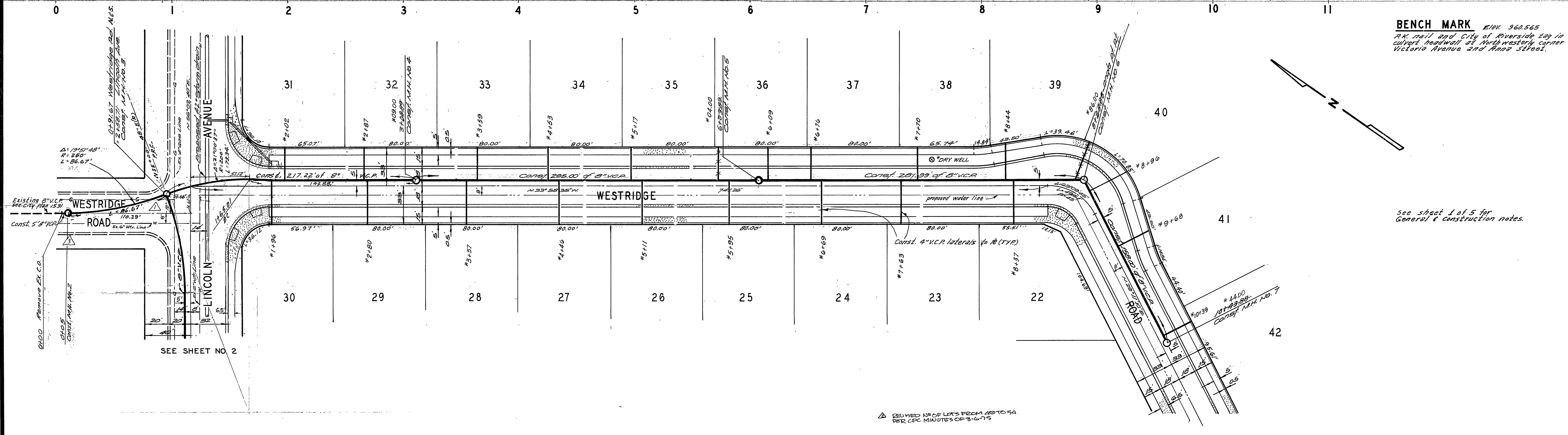
SEE SHEET NO. 5

SEE SHEET NO. 4

SEE SHEET NO. 3

REVISOR NO. OF LOTS FROM AD TO
 54 PER CAL. MINUTES OF 3-6-75

ALBERT A. WEBB ASSOCIATES CIVIL ENGINEERS RIVERSIDE, CALIFORNIA APPROVED BY: <i>Paul N. Webb</i> DATE: 1/17/74 R.E. No. 9876 W.O. 73-46 FOR: <i>Hollenbeck Dev. Co.</i> F.B. 1232	Approved By: <i>Howard L. Crossin</i> 1-18-74 Chief Water Utility Engineer Dale		CITY OF RIVERSIDE, CALIFORNIA PUBLIC WORKS DEPARTMENT APPROVED BY: <i>[Signature]</i> DATE: 6-13 PARK DEPARTMENT TRAFFIC DIVISION CHIEF PUB. WKS. ENGR.	SEWER PLAN AND PROFILE LINCOLN AVENUE BET. HORACE ST. & WESTRIDGE RD. TRACT NO. 5487 SCALE: HORIZ. 1" = 40' VERT. 1" = 4'	ACCOUNT No. DRAWING NUMBER S-974 SHEET 2 OF 5 73-46-B
	DESIGNED BY: _____ DRAWN BY: _____ CHECKED BY: _____	REVISIONS MARK: <i>Δ</i> Revised Lot lines per 4-10-75 <i>[Signature]</i> <i>Revised loc. M.H. to clear gas lines & easement</i> <i>[Signature]</i>			

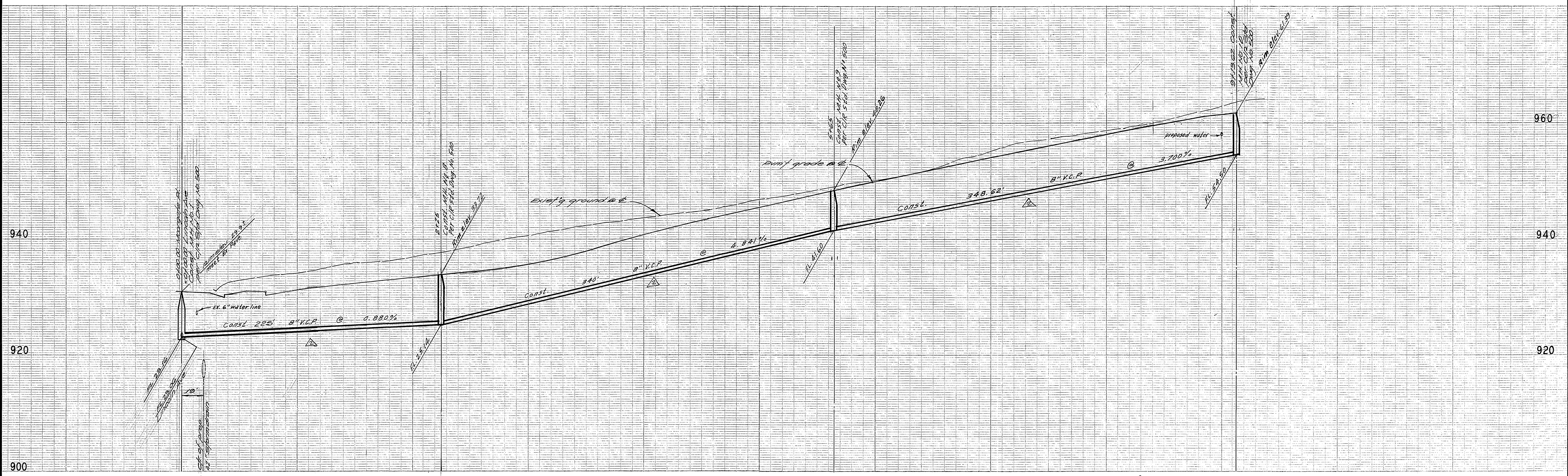


BENCH MARK Elev. 960.565
 Pk. rail and City of Riverside tag in
 culvert headwall at North westerly corner
 Victoria Avenue and Anna Street.

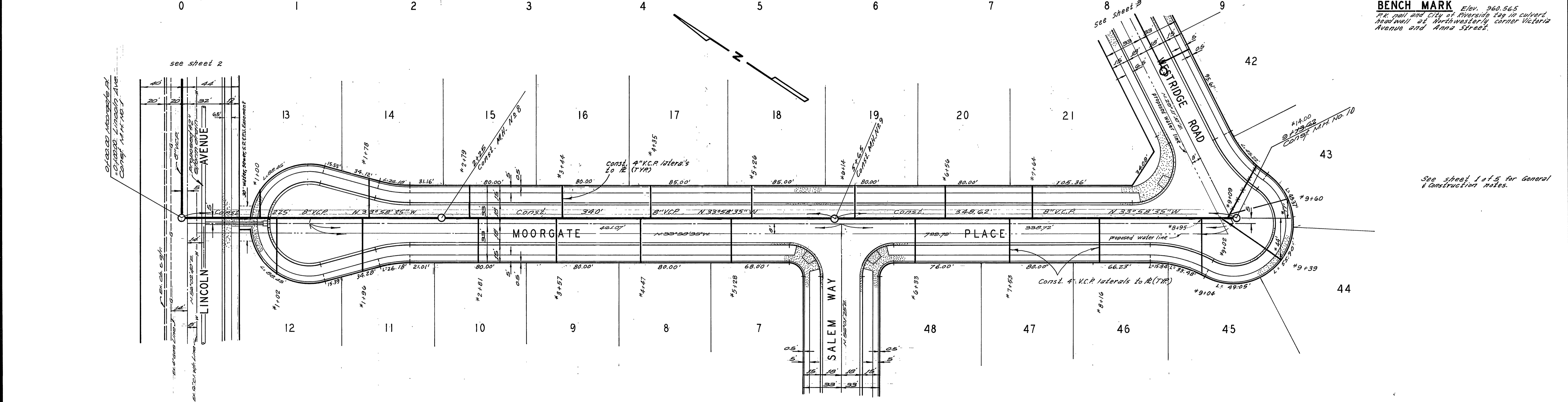
See sheet 1 of 5 for
 General & Construction notes.

DELIVERED NO. OF LOTS FROM 28 TO 54
 PER CPC MINUTES OF 3-6-79

ALBERT A. WEBB ASSOCIATES CIVIL ENGINEERS RIVERSIDE, CALIFORNIA APPROVED BY: <i>Carl N. Webb</i> DATE 1/17/74 R.E. No. 9876 W.O. 73-46 FOR: <i>Hollenbeck Dev. Co.</i> F.B. 1032	DESIGNED BY: _____ DRAWN BY: _____ CHECKED BY: _____	Approved By: <i>Howard R. Creamer</i> 1-18-74 Chief Water Utility Engineer Date	CITY OF RIVERSIDE, CALIFORNIA PUBLIC WORKS DEPARTMENT	SEWER PLAN AND PROFILE WESTRIDGE ROAD	ACCOUNT No. DRAWING NUMBER S-974
		APPROVED BY: <i>Howard R. Creamer</i> DATE 1-18-74 PRINCIPAL ENGINEER PARK DEPARTMENT TRAFFIC DIVISION CHIEF PUB. WKS. ENGR.	TRACT NO. 5487 SCALE: HORIZ. 1" = 40' VERT. 1" = 8'	SHEET 3 OF 5 73-46-B	



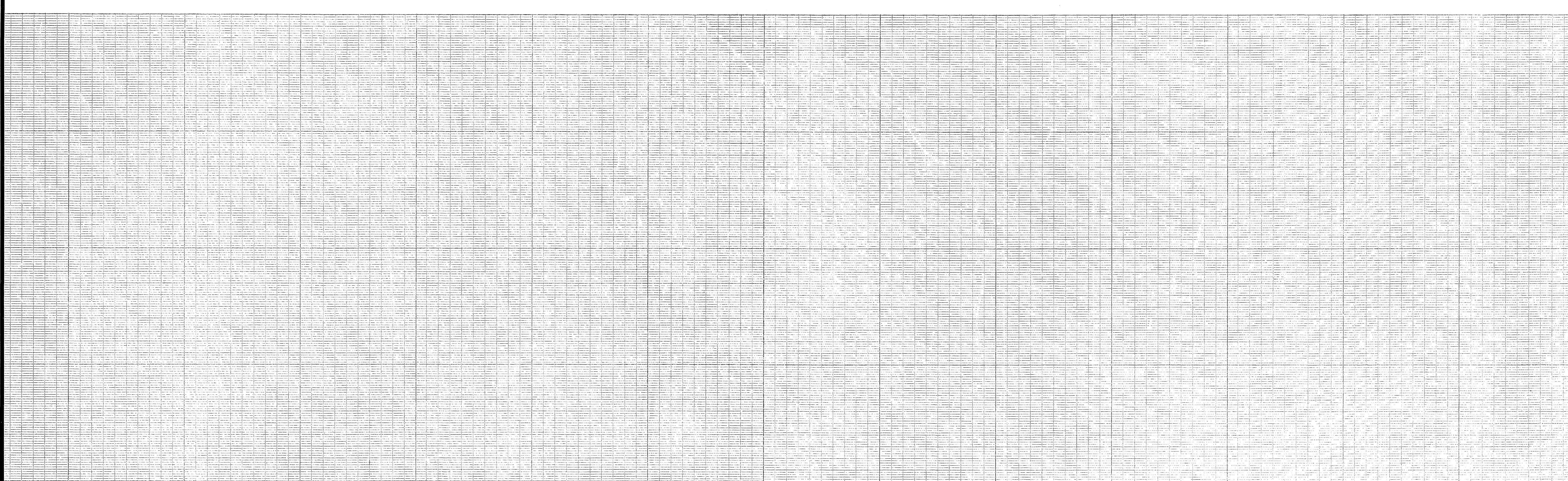
BENCH MARK Elev. 960.565
 P.K. 911 and City of Riverside tag to culvert
 headwall at Northwest corner Victoria
 Avenue and Anna Street.



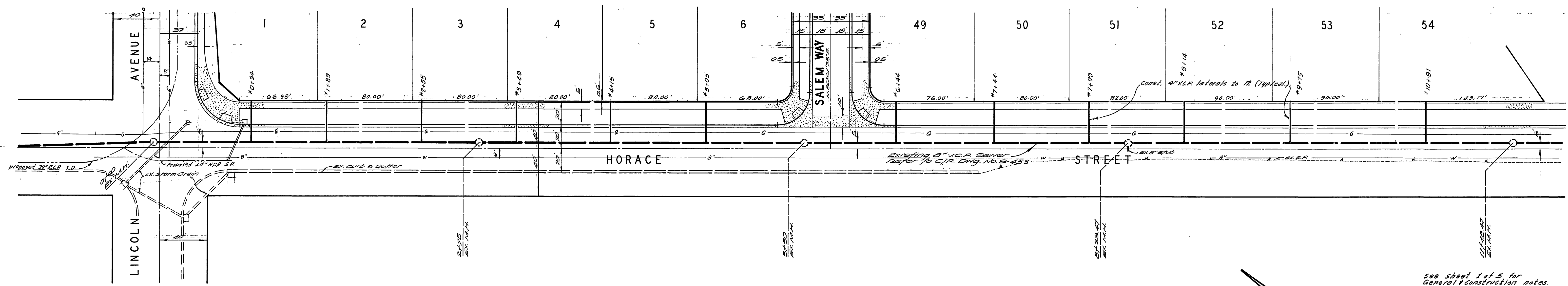
See sheet 1 of 5 for General
 Construction notes.

△ CHANGED NO. OF LOTS FROM MAP TO 54
 PER C.P.C. MINUTES OF 3-6-75

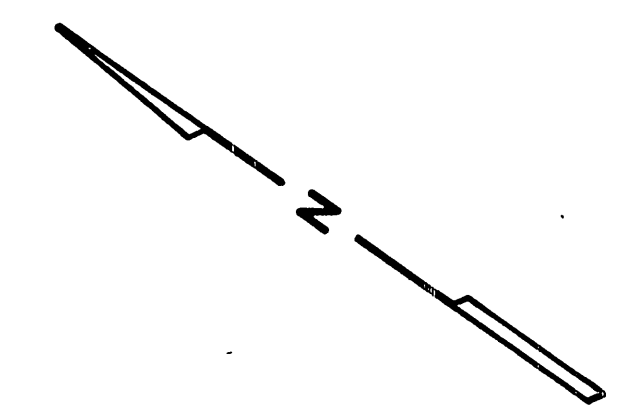
ALBERT A. WEBB ASSOCIATES CIVIL ENGINEERS RIVERSIDE, CALIFORNIA APPROVED BY: <i>[Signature]</i> DATE: 4/17/74 R.E. No. 9876	DESIGNED BY: _____ DRAWN BY: _____ CHECKED BY: _____	Approved By: <i>[Signature]</i> 1-18-74 Chief Water Utility Engineer Date		CITY OF RIVERSIDE, CALIFORNIA PUBLIC WORKS DEPARTMENT APPROVED BY: _____ DATE: _____ TRAFFIC DIVISION CHIEF PUB. WKS. ENGR.	SEWER PLAN AND PROFILE MOORGATE PLACE TRACT NO. 5487 SCALE: HORIZ. 1" = 40' VERT. 1" = 8'	ACCOUNT No. _____ DRAWING NUMBER 5-974 SHEET 4 OF 5 73-46-B
		AS BUILT 3-77 RPT				



BENCH MARK Elev. 960.565
 P.K. Mill and City of Riverside Log in Culvert
 headwall at Northwest corner Victoria
 Avenue and Anna Street.



△ REVISOR NO. OF LOTS FROM 49 TO 54
 PER CPC MINUTES OF 3-6-75



ALBERT A. WEBB ASSOCIATES CIVIL ENGINEERS RIVERSIDE, CALIFORNIA APPROVED BY: <i>Paul N. Webb</i> DATE 4/10/74 R.E. No. 9876	APPROVED BY: <i>Harold A. Oregon</i> 1-18-74 Chief Water Utility Engineer Date	CITY OF RIVERSIDE, CALIFORNIA PUBLIC WORKS DEPARTMENT		ACCOUNT No. DRAWING NUMBER S-974
		HORACE STREET TRACT NO. 5487		SHEET 5 OF 5 73-46-B
W.O. 73-46 FOR: <i>Hollenbeck Dev. Co.</i> F.B. 1032		DESIGNED BY: _____ DRAWN BY: _____ CHECKED BY: _____	REVISIONS MARK REVISIONS APPR. DATE △ Revised lot lines 7/17/75 Bel <i>[Signature]</i>	SCALE: HORIZ. 1" = 40' DATE: 6-14-74