

INDEX MAP

GENERAL NOTES

1. Construction shall be in accordance with the standard specifications for Public Works Construction, 1973 Edition, and City of Riverside Standard Drawings.
2. It shall be the responsibility of the contractor to clear the right of way in accordance with the provisions of the law as it affects each utility including irrigation lines and appurtenances and at no cost to the city.
3. Pipes shall be bedded per Case 1, Standard Drawing No. 452, unless otherwise specified on plans.
4. Location of pipes and laterals to be determined of the direction of the owner.
5. All stubs and laterals to be constructed in accordance with Standard Drawing No. 562. Stubs shall be plugged and capped.
6. Manhole frames and covers to be set by Sewer Contractor after final paving of street.
7. Laterals are to be 4" and extended to property line.
8. Prior to construction of sewer, contractor is to expose existing sewer and contact the Engineer for verification of existing elevations.
9. At all sewer house lateral crossings of water mains shown sewer shall be encased with Type C encasement per Std. Dwg. CWD-023 for 4.50' each side of water main or install cast iron pipe 4.50' each side of water main.
10. At all sewer main crossings of water mains shown sewer shall be encased with Type C encasement per Std. Dwg. CWD-023 for 4.50' each side of water main.

NOTICE TO CONTRACTOR

The existence and location of any underground utility pipes or structures shown on these plans are obtained by a search of the available records. To the best of our knowledge, there are no existing utilities except as shown on these plans.

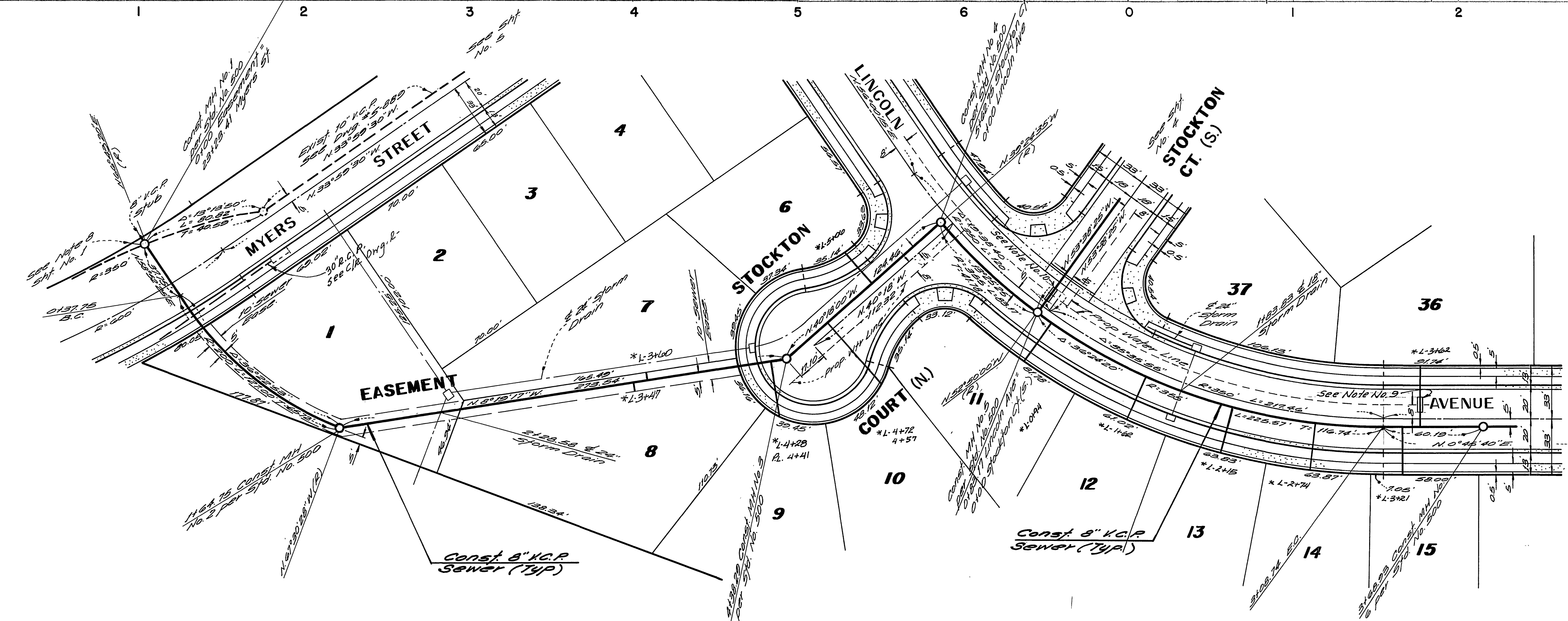
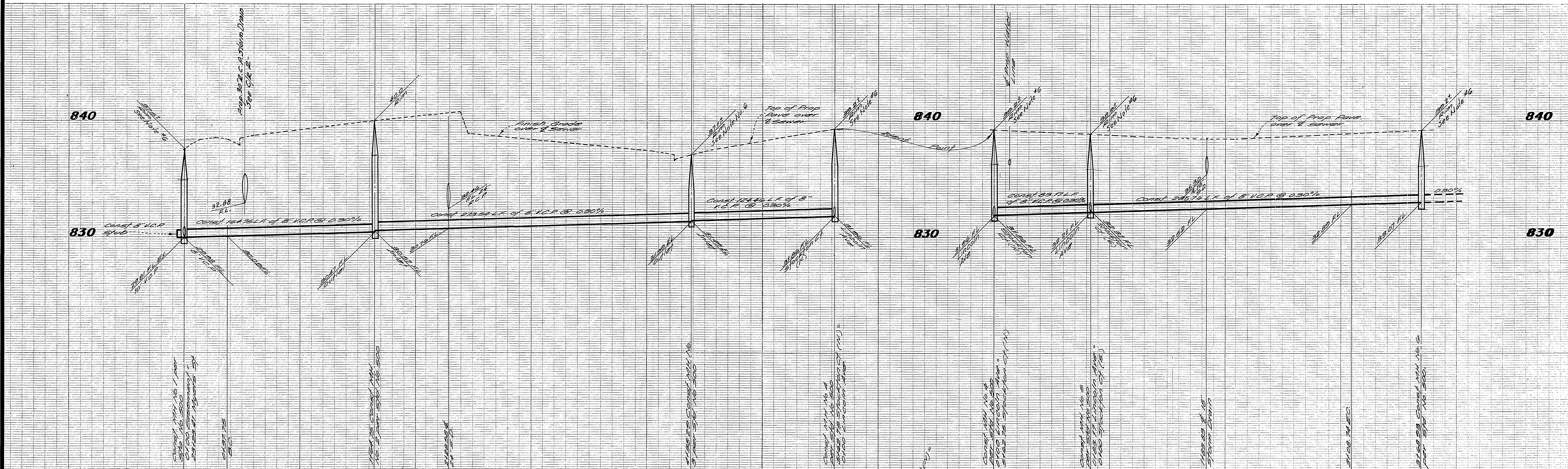
The Contractor is required to take due precautionary measures to protect the utility lines shown and any other lines not of record or not shown on these plans.

BENCH MARK

City of Riverside B.M. #2+0 being a brass disk in a cap wall of the intersection of Van Buren Blvd. and Victoria Ave.
 Elevation: 851.250

*AS BUILT E.S.K. 11/21/74

<p>ALBERT A. WEBB ASSOCIATES CIVIL ENGINEERS RIVERSIDE, CALIFORNIA</p> <p>APPROVED BY: <i>E. J. N. Webb</i> DATE: 3/4/74</p> <p>FILE NO. 2226</p> <p>DESIGNED BY: <i>REB</i> DRAWN BY: <i>RLT</i> CHECKED BY: <i>JOHNSON</i></p>	<p>Approved By: <i>Leland C. Cross</i> DATE: 3-19-74 Chief Water Utility Engineer Dept.</p> <p>CITY OF RIVERSIDE, CALIFORNIA PUBLIC WORKS DEPARTMENT</p> <p>APPROVED BY: <i>[Signature]</i> DATE: 7-15-74</p> <p>TRAFFIC DIVISION</p>	<p>ACCOUNT NO. _____</p> <p>DRAWING NUMBER</p> <p>TRACT No. 5513</p> <p>INDEX MAP</p> <p>SHEET 1 OF 5</p> <p>SCALE: Horiz. 1"=100'</p>
<p>73-186-B</p>		



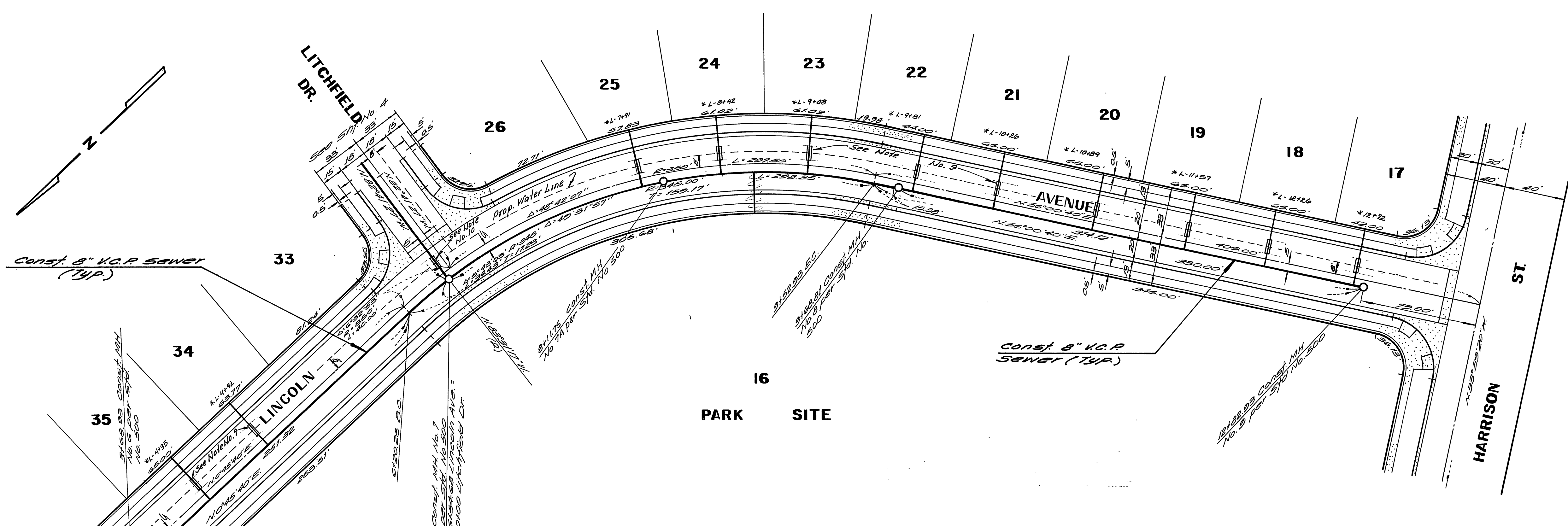
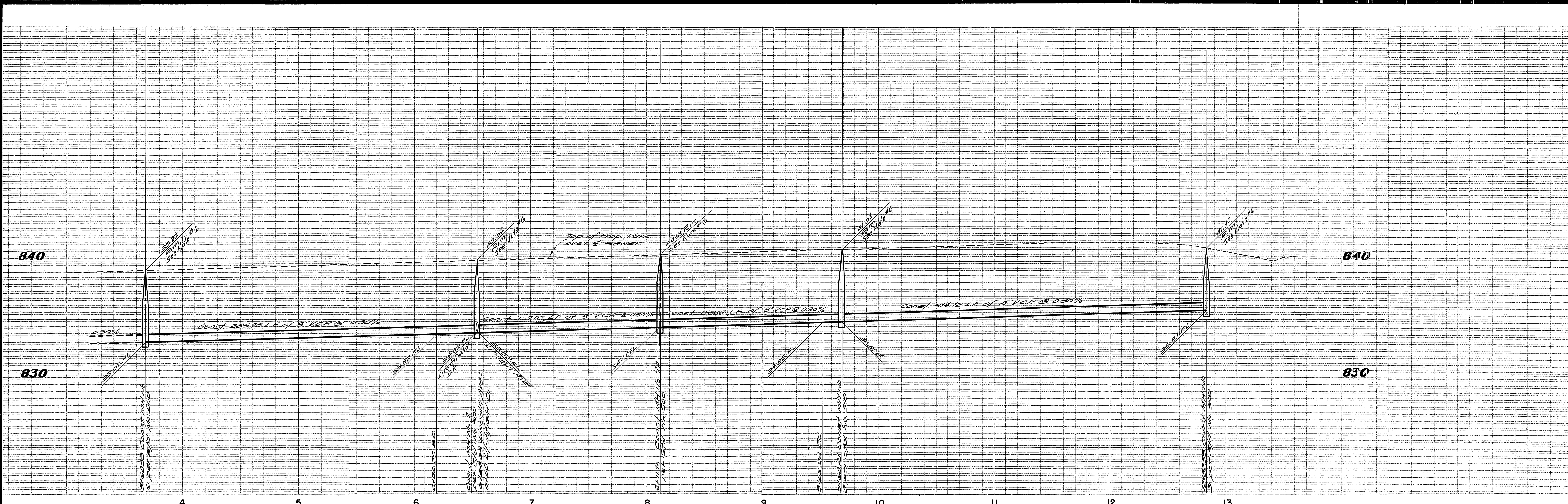
SEE SHEET 1 FOR GENERAL AND CONSTRUCTION NOTES

BENCH MARK
 City of Riverside B.M. #14-B, being a brass disk in a concrete wall at the intersection of Van Buren Blvd and Victoria Ave.
 Elevation: 381.250

* "AS BUILT" E.I.K. 11/21/74

Approved By: *Howard K. Cremer* 3-19-74
 Chief Engineer (City Engineer) Date

ALBERT A. WEBB ASSOCIATES CIVIL ENGINEERS RIVERSIDE, CALIFORNIA APPROVED BY: <i>E. A. Webb</i> DATE: 3/4/74 R.E. No. 9876	REVISIONS MARK: _____ APPR. DATE: _____	CITY OF RIVERSIDE, CALIFORNIA PUBLIC WORKS DEPARTMENT	SEWER PLAN AND PROFILE TRACT No. 5513 EASEMENT- STOCKTON CT. (N.) and LINCOLN AVE (FR. STA. 0+00 TO 3+68.93)	ACCOUNT No. DRAWING NUMBER S-977
		DESIGNED BY: <i>AWB</i> DRAWN BY: <i>ELW</i> CHECKED BY: <i>AWB</i>	APPROVED BY: <i>[Signature]</i> PRINCIPAL ENGINEER PARK DEPARTMENT TRAFFIC DIVISION CHIEF PUB. WKS. ENGR.	DATE: 7-11-74



SEE SHEET 1 FOR GENERAL AND CONSTRUCTION NOTES

BENCH MARK
 City of Riverside B.M. # 24-B, being a brass disk, the capped wall at the intersection of Van Buren Blvd. and Victoria Ave. Elevation: 881.950

*'AS BUILT' E.J.K. 11/21/74

ALBERT A. WEBB ASSOCIATES
 CIVIL ENGINEERS
 RIVERSIDE, CALIFORNIA

APPROVED BY: *[Signature]* DATE 3/1/74
 R.E. No. 9876

Approved By: *[Signature]* 3-19-74
 Chief Engineer

CITY OF RIVERSIDE, CALIFORNIA
 PUBLIC WORKS DEPARTMENT

APPROVED BY: *[Signature]* DATE 7/13/74
 PRINCIPAL ENGINEER
 PARK DEPARTMENT
 TRAFFIC DIVISION
 CHIEF PUB. WKS. ENGR.

DATE 7-15-74

SEWER PLAN AND PROFILE

TRACT No. 5513
 LINCOLN AVENUE
 FROM STA. 3+68.93 TO STA. 12+82.93

ACCOUNT No. DRAWING NUMBER
 S.977

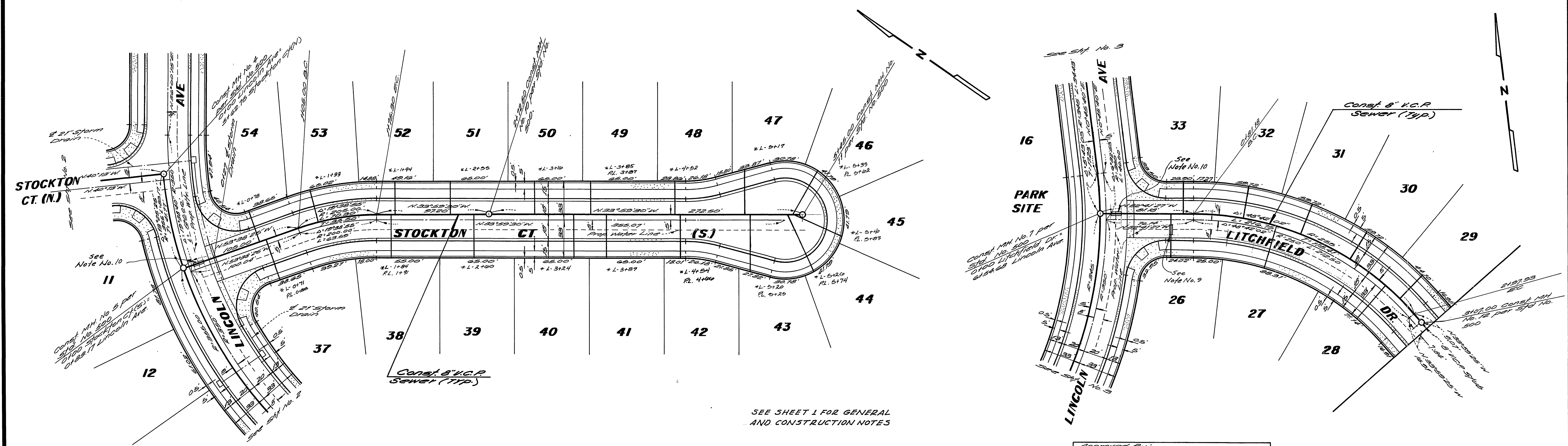
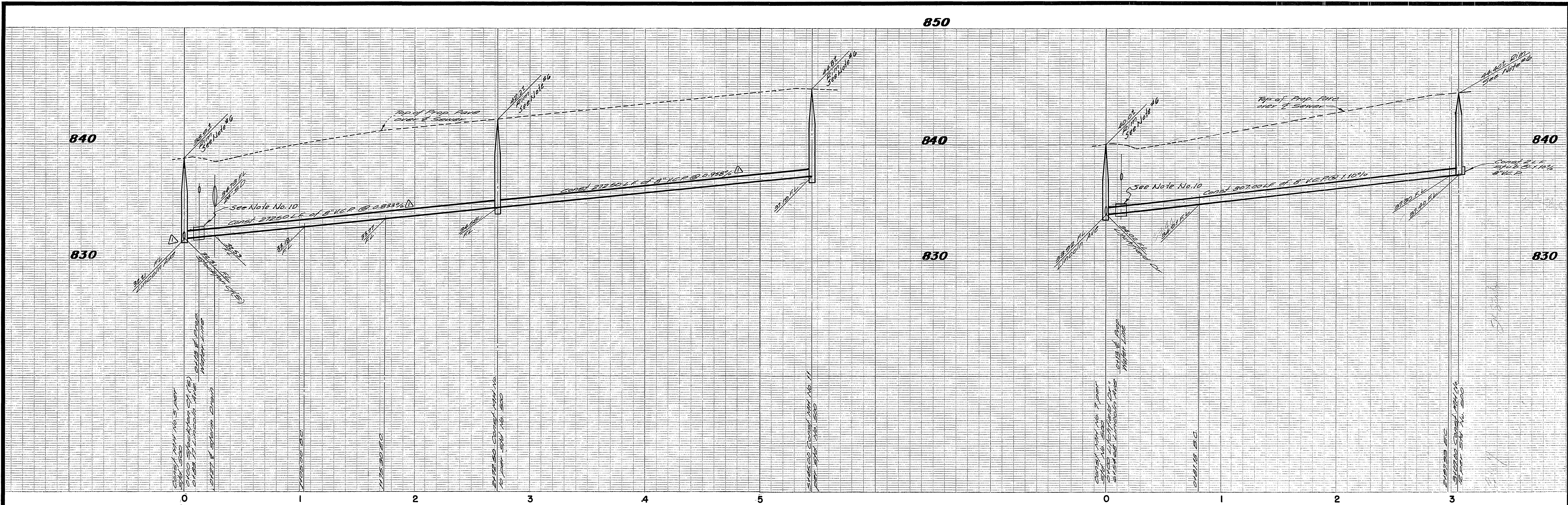
SHEET 3 OF 5

SCALE: HORIZ. 1" = 40' VERT. 1" = 4'

73-186-B

W.O. 73-186 FOR: *[Signature]* & *[Signature]* F.B. 1032

DESIGNED BY: *[Signature]* DRAWN BY: *[Signature]* CHECKED BY: *[Signature]*



BENCH MARK
 City of Riverside B.M. #E-4-B, being a brass disk in a capped well at the intersection of Van Buren Blvd and Victoria Ave.
 Elevation: 881.250

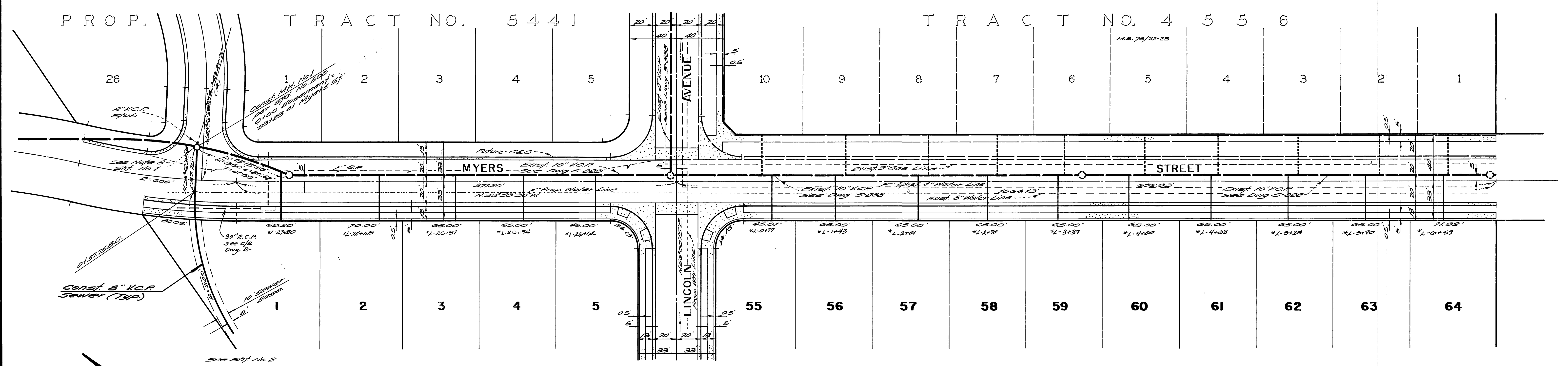
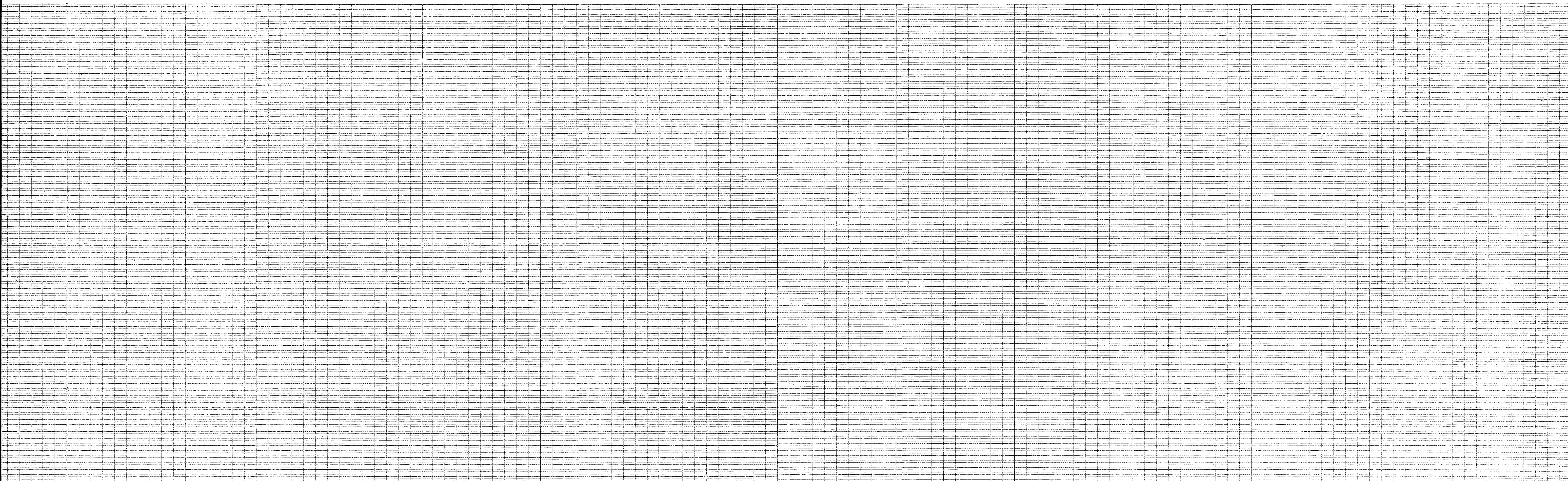
*AS BUILT E.J.K. 11/21/74

ALBERT A. WEBB ASSOCIATES
 CIVIL ENGINEERS
 RIVERSIDE, CALIFORNIA
 APPROVED BY: *Carl N. Webb* DATE: 3/4/74
 R.E. No. 9876

NO.	REVISIONS	APPR. DATE
1	Revised sewer grades of 1st and 2nd	

Approved By: *Edward K. Creamer* 3-17-74
 Chief Water Utility Engineer Dept
 CITY OF RIVERSIDE, CALIFORNIA
 PUBLIC WORKS DEPARTMENT
 APPROVED BY: *[Signature]*
 PRINCIPAL ENGINEER
 PARK DEPARTMENT
 TRAFFIC DIVISION
 CHIEF PUB. WKS. ENGR.
 DATE: 7-1-74

SEWER PLAN AND PROFILE
 TRACT No. 5513
 STOCKTON COURT (S.)
 and
 LITCHFIELD DRIVE
 SCALE: HORIZ. 1" = 40' VERT. 1" = 4'
 ACCOUNT No. 97-186-B
 DRAWING NUMBER S-977
 SHEET 4 OF 5



BENCH MARK
 City of Riverside B.M. "E-4-B" being a brass disk in a capped well at the intersection of 1st Buren Blvd and Victoria Ave
 Elevation: 881.250

SEE SHEET 1 FOR GENERAL AND CONSTRUCTION NOTES

* "AS BUILT" E.I.K. 11/21/74

Approved By: <i>Howard A. Green</i> 3-19-74 Chief Water Utility Engineer Date		ACCOUNT No. DRAWING NUMBER S-977
ALBERT A. WEBB ASSOCIATES CIVIL ENGINEERS RIVERSIDE, CALIFORNIA APPROVED BY: <i>Albert A. Webb</i> DATE 3/6/74 R.E. No. 9876		CITY OF RIVERSIDE, CALIFORNIA PUBLIC WORKS DEPARTMENT APPROVED BY: <i>John J. [Signature]</i> DIRECTOR OF PUBLIC WORKS DATE: 7-11-74
W.O. 73-186 FOR: <i>Lawman & Broad</i> F.B. 1082 DESIGNED BY: <i>REK</i> DRAWN BY: <i>REK</i> CHECKED BY: <i>WLDW</i>		SEWER PLAN AND PROFILE TRACT No. 5513 MYERS STREET SCALE: HORIZ. 1" = 40' SHEET 5 OF 5 73-186-B