

CURVE DATA

STATION	ANGLE	TANGENT	LENGTH
100'	14° 24' 11"	12.34'	24.50'
200'	09° 50' 11"	17.39'	34.40'
200'	14° 21' 20"	25.19'	50.12'
200'	07° 01' 18"	12.27'	24.51'
100'	16° 15' 37"	14.29'	28.58'

FB 978 P22-25
B.M. 260 (FB. 707/62)



CITY OF RIVERSIDE, CALIFORNIA
PUBLIC WORKS DEPARTMENT

MULBERRY-LIME SEWER REPLACEMENT

ACCOUNT No. 32-577-547
DRAWING NUMBER
S-983
SHEET 1 OF 1

APPROVED BY: [Signature]
PRINCIPAL ENGINEER: [Signature]
PARK DEPARTMENT
TRAFFIC DIVISION
CHIEF PUB. WKS. ENGR. [Signature]

APPROVED BY: [Signature]
DIRECTOR OF PUBLIC WORKS

DATE: 3/18/76
DATE: 2/20

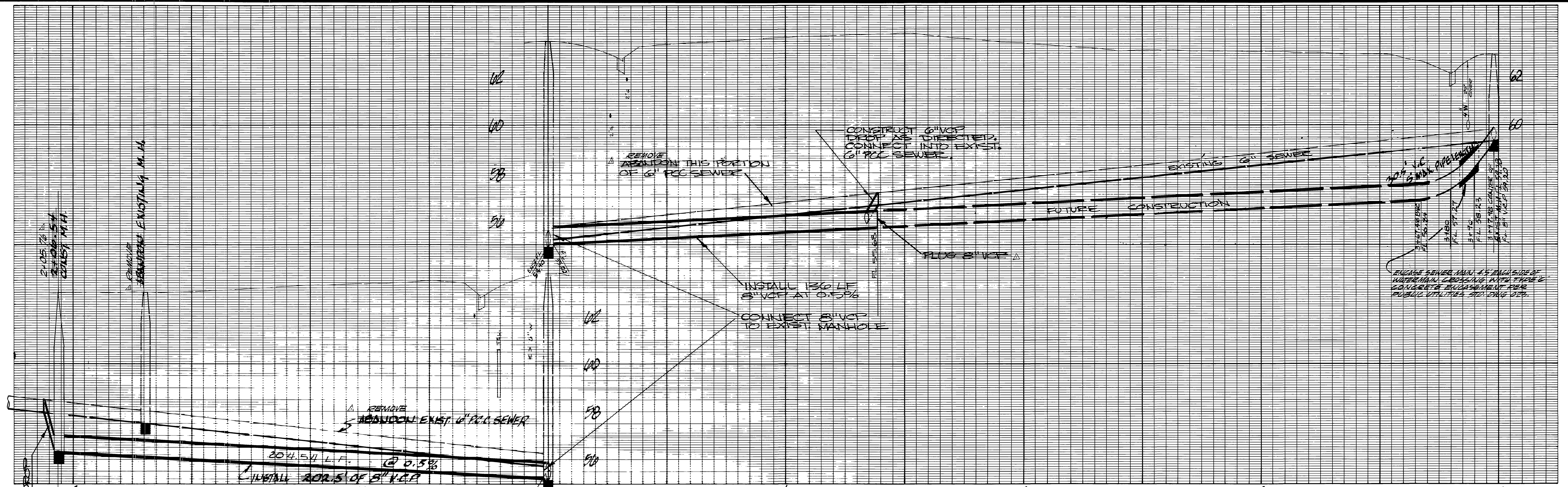
HORIZ. SCALE: 1" = 20'
VERT. SCALE: 1" = 2'

DESIGNED BY: [Signature]
DRAWN BY: [Signature]
CHECKED BY: [Signature]

DATE: 2-17-76

APPROVED BY: [Signature]
ENGINEER, WATER

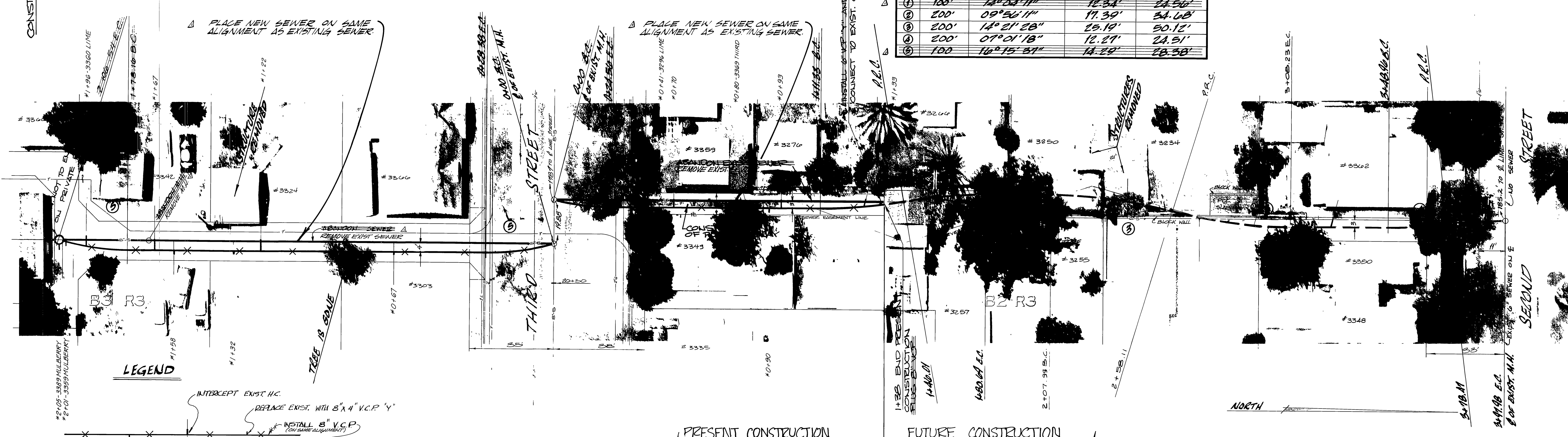
RECORDS OF ORIGINAL SEWER INSTALLATION AND LOCATION OF I.C. AVAILABLE FROM PUBLIC WORKS DEPARTMENT.



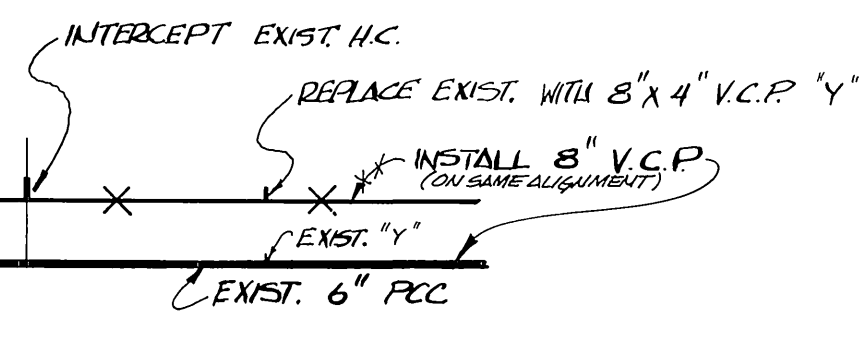
CURVE DATA

STATION	RADIUS	ANGLE	TANGENT	LENGTH
1	100'	14° 04' 11"	12.34'	24.50'
2	200'	09° 56' 11"	17.39'	34.08'
3	200'	14° 21' 28"	29.19'	60.12'
4	200'	07° 01' 18"	12.27'	24.91'
5	100'	16° 15' 31"	14.24'	28.58'

FB 978 P22-25
B.M. 860 (FB. 701/62)



LEGEND



RECORDS OF ORIGINAL SEWER INSTALLATION AND LOCATION OF H.C. AVAILABLE FROM PUBLIC WORKS DEPARTMENT.

CITY OF RIVERSIDE, CALIFORNIA PUBLIC WORKS DEPARTMENT		MULBERRY-LIME SEWER REPLACEMENT		ACCOUNT No. 32-571-547 DRAWING NUMBER 3-983
APPROVED BY PRINCIPAL ENGINEER PARK DEPARTMENT TRAFFIC DIVISION CHIEF PUB. WKS. ENGR.	BY DATE 11/8/76 11/26/76	APPROVED BY DIRECTOR OF PUBLIC WORKS	DATE 11/26/76	SHEET 1 OF 1
DESIGNED BY: <i>M. J. [Signature]</i> DRAWN BY: <i>[Signature]</i> CHECKED BY:		HORIZ. SCALE: 1" = 20' VERT. SCALE: 1" = 2'		*AS BUILT 8-76 KFT