

SEWER PLAN
INDEX MAP

GENERAL SEWER NOTES

1. CONSTRUCTION SHALL BE IN ACCORDANCE WITH THE STANDARD SPECIFICATIONS FOR PUBLIC WORKS CONSTRUCTION, 1973 EDITION AND CITY OF RIVERSIDE STANDARD DRAWINGS.
2. IT SHALL BE THE RESPONSIBILITY OF THE CONTRACTOR TO CLEAR THE RIGHT OF WAY IN ACCORDANCE WITH THE PROVISIONS OF THE LAW AS IT AFFECTS EACH UTILITY INCLUDING IRRIGATION LINES AND APPURTENANCES AND AT NO COST TO THE CITY.
3. THE PIPE SHALL BE BEDDED PER CASE 1, STANDARD DRAWING NO 452, UNLESS OTHERWISE SPECIFIED ON THE PLANS.
4. LOCATION OF WYES AND LATERALS TO BE DETERMINED AT THE TIME OF CONSTRUCTION AT THE DIRECTION OF THE OWNER.
5. ALL STUBS AND LATERALS TO BE CONSTRUCTED PER STANDARD DRAWING NO. 462. STUBS SHALL BE PLUGGED AND CAPED.
6. MANHOLE FRAMES AND COVERS TO BE SET TO FINISH GRADE BY THE SEWER CONTRACTOR AFTER THE FINAL PAVING OF STREETS.
7. LATERALS TO BE 4" VCP AND EXTENDED TO THE PROPERTY LINE.
8. A PLUG SHALL BE INSTALLED AND WILL REMAIN IN PLACE WHERE THE NEW SEWER CONNECTS WITH THE EXISTING SEWER UNTIL THE NEW SEWER IS ACCEPTED BY THE CITY.

NOTICE TO CONTRACTOR

THE EXISTENCE AND LOCATION OF ANY UNDERGROUND UTILITY PIPES OR STRUCTURES SHOWN ON THESE PLANS ARE OBTAINED BY A SEARCH OF THE AVAILABLE RECORDS. TO THE BEST OF OUR KNOWLEDGE, THERE ARE NO EXISTING UTILITIES EXCEPT AS SHOWN ON THESE PLANS.

THE CONTRACTOR IS REQUIRED TO TAKE DUE PRECAUTIONARY MEASURES TO PROTECT THE UTILITY LINES SHOWN AND ANY OTHER LINES NOT OF RECORD OR NOT SHOWN ON THESE PLANS.

BENCH MARK

ELEVATION 733.31 CITY OF RIVERSIDE G.S.D. TOP OF BRASS DISC IN WELL AT AP IN ARLINGTON AVENUE, 500' EAST OF LAKE ST.

*85 built e.j.k. 3-75

ALBERT A. WEBB ASSOCIATES
CIVIL ENGINEERS
RIVERSIDE, CALIFORNIA

APPROVED BY: *[Signature]* DATE: 6/24/74
R.E. No. 21884

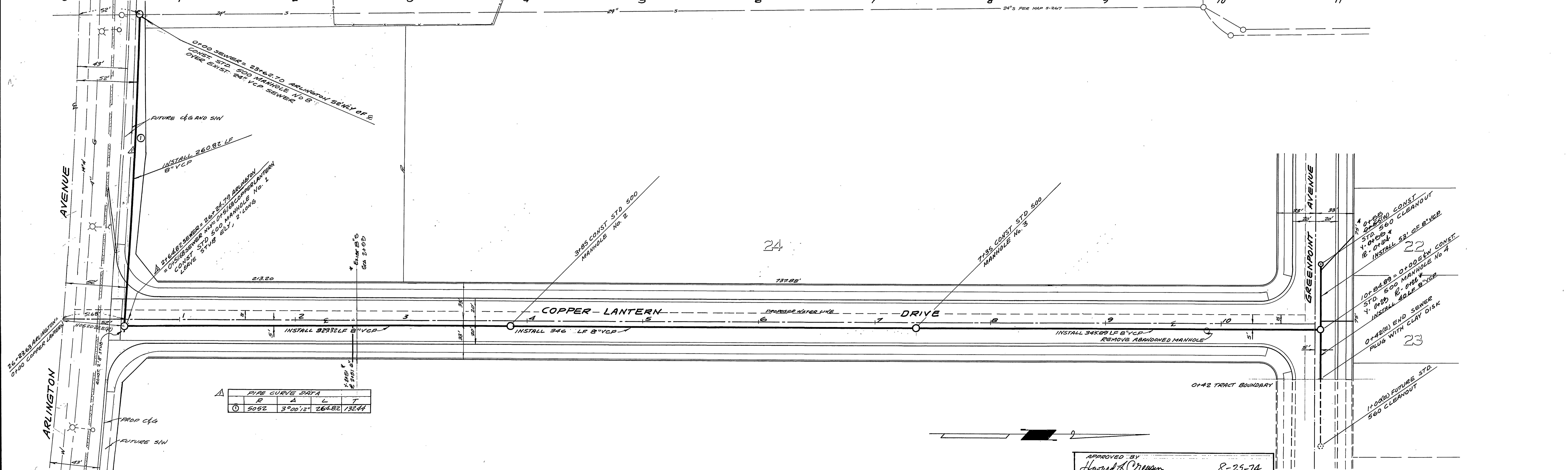
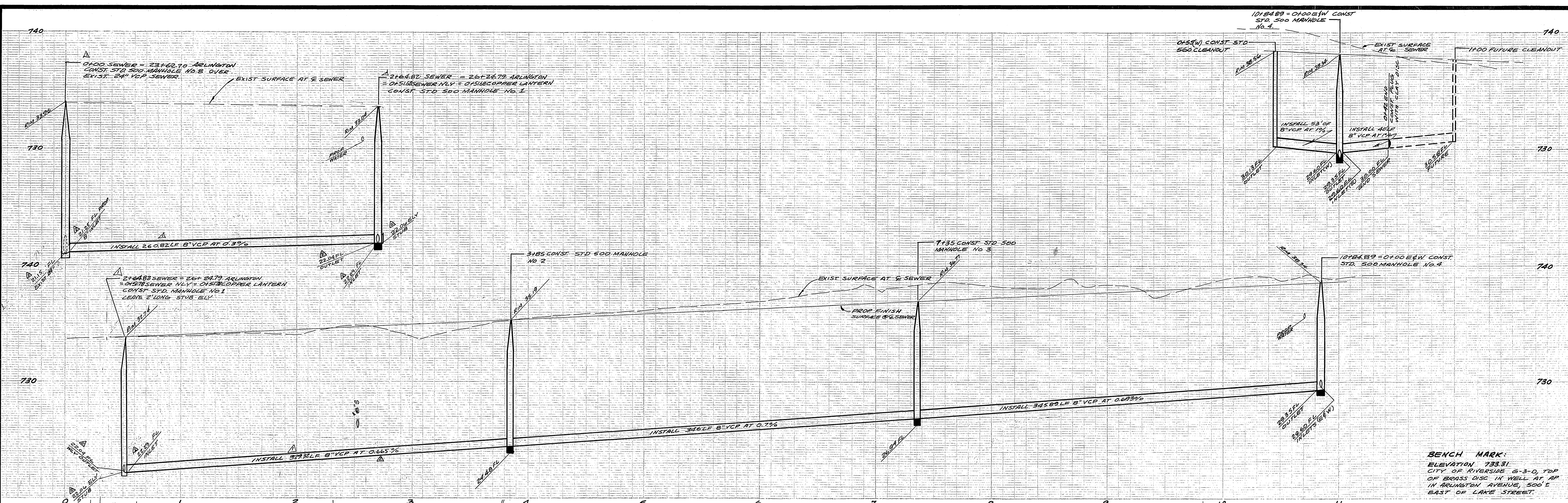
W.O. 73-40 FOR HOME AND COUNTRY F.B. 1029

MARK	REVISIONS	APPR. DATE

APPROVED BY <i>[Signature]</i> 8-29-74 CHIEF WATER UTILITY ENGINEER	
CITY OF RIVERSIDE, CALIFORNIA PUBLIC WORKS DEPARTMENT	
APPROVED BY PRINCIPAL ENGINEER <i>[Signature]</i>	DATE 8-29-74
TRAFFIC DIVISION	DIRECTOR OF PUBLIC WORKS
CHIEF PUB. WKS. ENGR. <i>[Signature]</i>	DATE 11-8-74

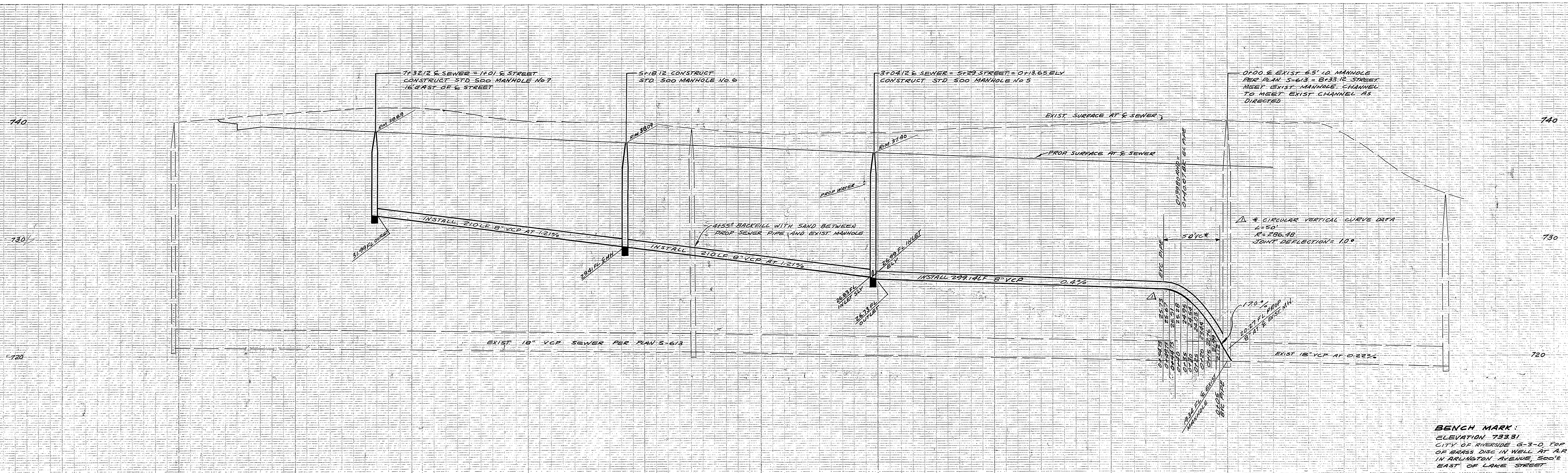
SEWER PLAN TRACT 5002-1
INDEX MAP
SCALE: AS NOTED

ACCOUNT No. DRAWING NUMBER S-984 SHEET 1 OF 4 73-408

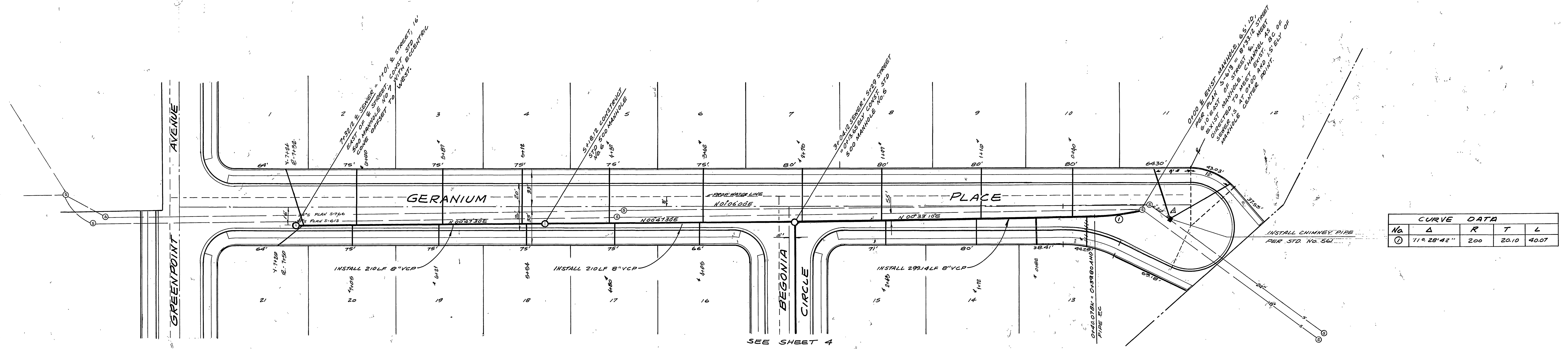


SEE SHEET NO. 1 FOR GENERAL SEWER NOTES

ALBERT A. WEBB ASSOCIATES CIVIL ENGINEERS RIVERSIDE, CALIFORNIA APPROVED BY <i>[Signature]</i> DATE 5-14-74 R.E. No. 21884 W.O. 73-40 FOR HOME AND COUNTRY F.B. 1029	*25 BLUE S.J.K. 3-70 Revised alignment to avoid pole at 0+10 PAVED SIDE AT N.E.S. TO MEET EXIST. SEWER	APPROVED BY <i>[Signature]</i> 8-29-74 CHIEF WATER UTILITY ENGINEER DATE	CITY OF RIVERSIDE, CALIFORNIA PUBLIC WORKS DEPARTMENT APPROVED BY <i>[Signature]</i> DIRECTOR OF PUBLIC WORKS DATE 11-8-74	SEWER PLAN AND PROFILE TRACT No. 5002-1 COPPER LANTERN DRIVE SCALE: HORIZ.: 1"=40' VERT.: 1"=4' ACCOUNT No. DRAWING NUMBER 5-984 SHEET 2 OF 4 73-40B
	MARK REVISIONS APPR. DATE DESIGNED BY SE DRAWN BY SE CHECKED BY BA	APPROVED BY PRINCIPAL ENGINEER PARK DEPARTMENT TRAFFIC DIVISION CHIEF PUB. WKS. ENGR.	BY DATE 9/20 11/4/75 11/8	DATE 11-8-74



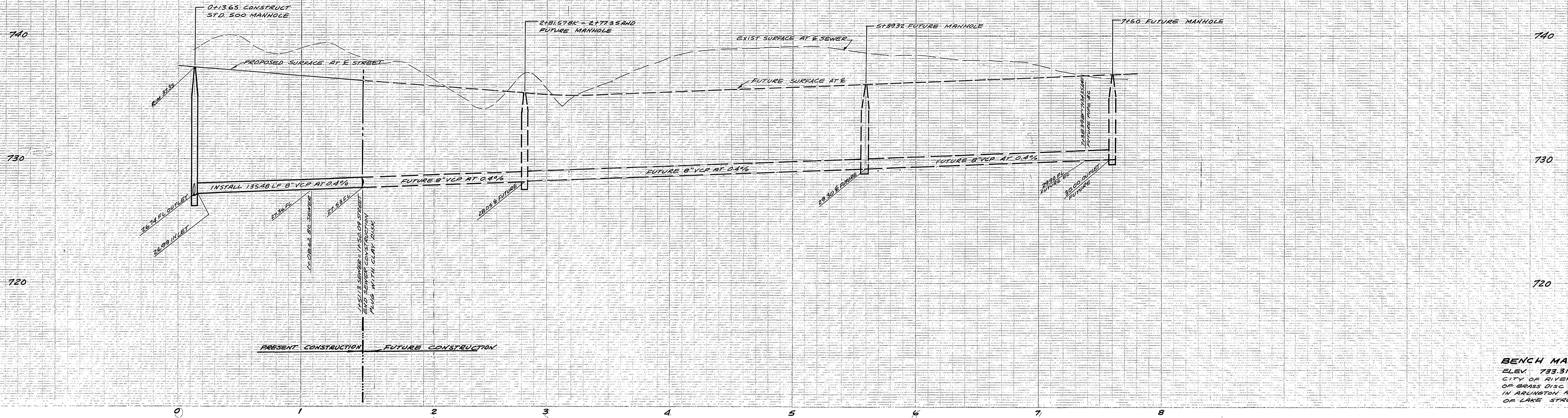
BENCH MARK:
 ELEVATION 733.81
 CITY OF RIVERSIDE 6-3-D TOP
 OF BRASS DISC IN WELL AT A.P.
 IN ARLINGTON AVENUE, 500' E
 EAST OF LAKE STREET



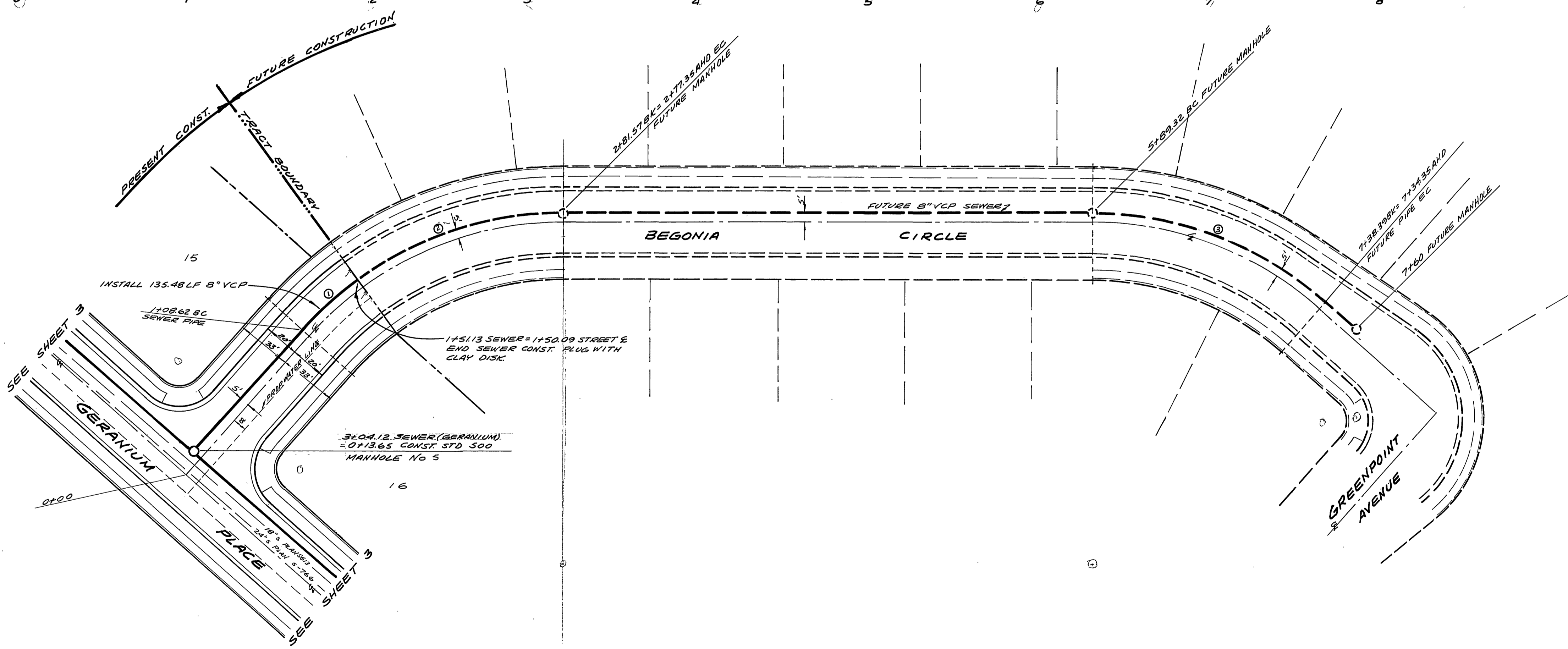
CURVE DATA				
NO	Δ	R	T	L
①	11° 28' 42"	200	20.10	40.07

SEE SHEET NO 1 FOR GENERAL SEWER NOTES

ALBERT A. WEBB ASSOCIATES CIVIL ENGINEERS RIVERSIDE, CALIFORNIA APPROVED BY: <i>[Signature]</i> DATE: 6-14-74 R.E. No. 21884		APPROVED BY: <i>[Signature]</i> DATE: 8-29-74 CHIEF WATER UTILITY ENGINEER		CITY OF RIVERSIDE, CALIFORNIA PUBLIC WORKS DEPARTMENT APPROVED BY: <i>[Signature]</i> DATE: 11-8-74 DIRECTOR OF PUBLIC WORKS		SEWER PLAN AND PROFILE TRACT No. 5002-1 GERANIUM PLACE SCALE: HORIZ: 1"=40' VERT: 1"=4' ACCOUNT No. 5984 DRAWING NUMBER SHEET 3 OF 4 73-408	
W.O. 73-40 FOR HOME AND COUNTRY F.B. 1029		DESIGNED BY: SE DRAWN BY: SE CHECKED BY: BM		MARK REVISIONS APPR. DATE		REVISOR: [Signature] DATE: 11/8	



BENCH MARK:
 ELEV. 733.31
 CITY OF RIVERSIDE G-3-0, TOP
 OF BRASS DISC IN WELL AT R.R.
 IN ARINGTON AVENUE, 500' EAST
 OF LAKE STREET



CURVE DATA				
No.	Δ	R	T	L
①	11° 52' 49"	205'	21.33'	42.51'
②	29° 46' 56"	205'	54.51'	106.56'
③	48° 20' 15"	205'	92.00'	172.95'

SEE SHEET NO 1 FOR GENERAL SEWER NOTES

ALBERT A. WEBB ASSOCIATES CIVIL ENGINEERS RIVERSIDE, CALIFORNIA APPROVED BY <i>David E. G...</i> DATE: 11-74 R.E. No. 21884	DESIGNED BY <i>SE</i> DRAWN BY <i>SE</i> CHECKED BY <i>Ba</i>	APPROVED BY <i>Harold Cream</i> 8-29-74 CHIEF WATER UTILITY ENGINEER DATE	SEWER PLAN AND PROFILE TRACT No. 5002-1	ACCOUNT No. DRAWING NUMBER S-984
		CITY OF RIVERSIDE, CALIFORNIA PUBLIC WORKS DEPARTMENT APPROVED BY <i>...</i> DATE: 11-8-74 CHIEF PUB. WKS. ENGR.	BEGONIA CIRCLE	SHEET 4 OF 4 73-408