

BENCH MARK

Elev. 967.071, P.K. nail 1/2" in center of SW curb return @ Arlington & Victoria
C/R F.B. 839/34.

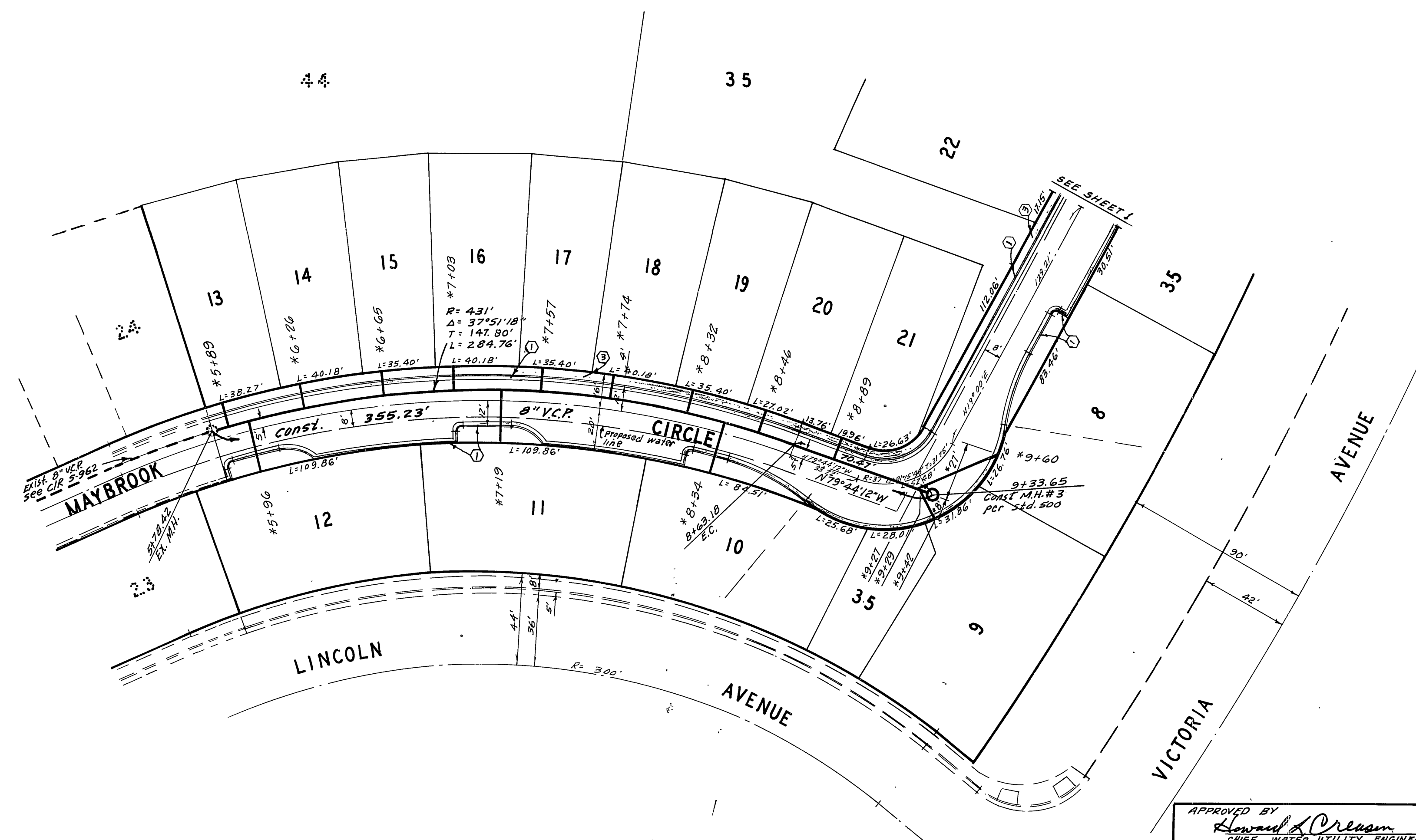
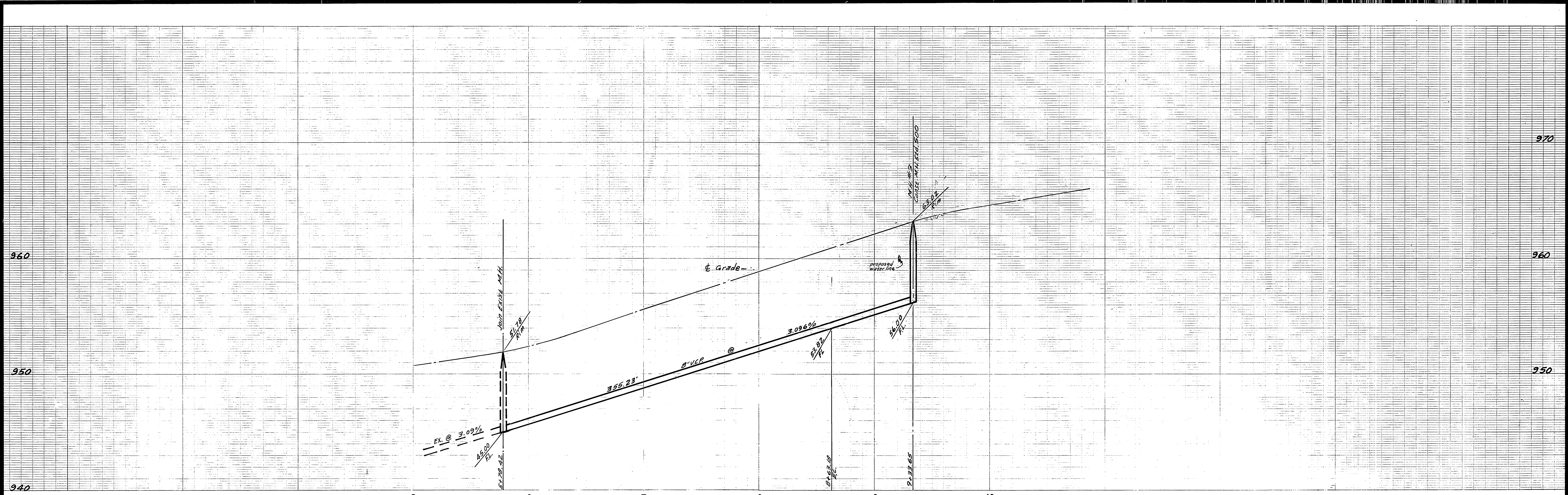
GENERAL NOTES

1. Construction shall be in accordance with the Standard Specifications for Public Works construction, 1973 Edition, and City of Riverside Standard Drawings.
2. Location of wyes and laterals to be determined at the direction of the owner.
3. Manhole frames and covers to be set at existing or proposed grades.
4. Prior to construction of sewer, contractor shall expose existing sewer and verify its existing elevation and location.
5. It shall be the responsibility of the contractor to clear the right of way in accordance with the provisions of law as it affects each utility including irrigation lines and appurtenances and at no cost to the City.
6. The sewer contractor shall adjust manholes to final grade after paving is completed.

ALBERT A. WEBB ASSOCIATES
CIVIL ENGINEERS
RIVERSIDE, CALIFORNIA
APPROVED BY: *Albert A. Webb* DATE: 10-8-74
R.E. No. 9876
W.O. 73-9 FOR CHEVRON CONST. CO. F.B. 10/31

APPROVED BY: *Howard L. Cream* 9-26-74
CHIEF WATER UTILITY ENGINEER DATE
CITY OF RIVERSIDE, CALIFORNIA
PUBLIC WORKS DEPARTMENT
APPROVED BY: *William D. Brown*
PRINCIPAL ENGINEER DATE: 10/17/74
PARK DEPARTMENT
TRAFFIC DIVISION
DIRECTOR OF PUBLIC WORKS
CHIEF PUB. WKS. ENGR. DATE: 11/01/74

* AS BUILT 476 KPT
ACCOUNT No. 5-985
DRAWING NUMBER
SHEET 1 OF 2
73-9-B
SCALE: 1" = 40' Horiz., 1" = 4' Vert.



BENCH MARK
 Elev. 961.071, PK. nail tag in center of SW curb return @
 Arlington & Victoria CIR. F.B. 839/34

ALBERT A. WEBB ASSOCIATES
 CIVIL ENGINEERS
 RIVERSIDE, CALIFORNIA
 APPROVED BY *[Signature]* DATE 10-8-74
 R.E. No. 9876

MARK	REVISIONS	APPR.	DATE

APPROVED BY *[Signature]* DATE 9-26-74
 CHIEF WATER UTILITY ENGINEER
 CITY OF RIVERSIDE, CALIFORNIA
 PUBLIC WORKS DEPARTMENT
 APPROVED BY *[Signature]* DATE 11/10/75
 PRINCIPAL ENGINEER
 PARK DEPARTMENT
 TRAFFIC DIVISION
 CHIEF PUB. WKS. ENGR.

* AS BUILT 4.76 PCT
SEWER PLAN AND PROFILE
MAYBROOK CIRCLE
PRIVATE STREET
TRACT 5311

ACCOUNT No.
 DRAWING NUMBER
5-985
 SHEET 2 OF 2
 73-9-B

SCALE: 1" = 40' Horiz., 1" = 4' Vert.

W.O. 73-9 FOR CHEVRON CONST. CO. F.B. 1031
 DESIGNED BY *[Signature]* DRAWN BY *[Signature]* CHECKED BY *[Signature]*