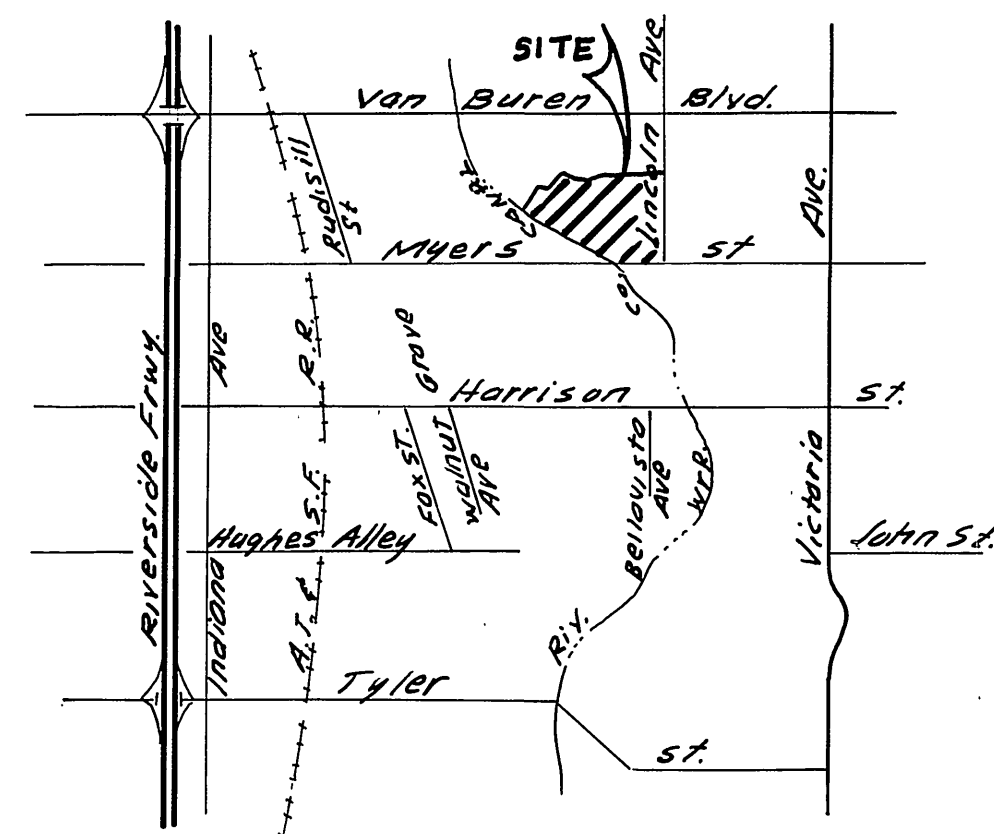
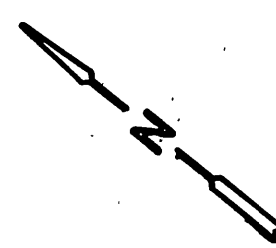


INDEX MAP
1"=100'



LOCATION MAP

GENERAL NOTES

1. Construction shall be in accordance with the Standard Specifications for Public Works Construction, 1973 Edition, and the City of Riverside Standard Drawings.
2. It shall be the responsibility of the contractor to clear the Right of Way in accordance with the provisions of the law as it affects each utility including irrigation lines and appurtenances and at no cost to the City.
3. Pipe shall be bedded per case 1, Standard Drawing No. 452, unless otherwise specified on plans.
4. Location of wyes and laterals to be determined at the direction of the owner.
5. All stubs and laterals to be constructed in accordance with Standard Drawing No. 562. Stubs shall be plugged and capped.
6. Manhole frames and covers to be set as noted in profile by sewer contractor after final paving of streets.
7. Laterals are to be 4" and extended to property line.
8. Prior to construction of sewer, contractor is to expose the existing sewer and contact the Engineer for verification of existing location and elevation.
9. Encase sewer 4.5' each side of proposed water main crossings per Public Utilities Drawing CWD 023, Type C.
10. A plug shall be installed, and will remain in place, where the new sewer connects with the existing sewer until such time as the new sewer is accepted by the City.

NOTICE TO CONTRACTOR

The existence and location of underground utility pipes or structures shown on these plans are obtained by a search of the available records. To the best of our knowledge, there are no existing utilities except as shown on these plans.
The contractor is required to take due precautionary measures to protect the utility line shown and any other lines not of record or not shown on these plans.

BENCH MARK

City of Riverside B.M.#-A-B being a brass disk in cap well at the intersection of Van Buren Blvd and Victoria Ave. Elevation 881.95

ALBERT A. WEBB ASSOCIATES
CIVIL ENGINEERS
RIVERSIDE, CALIFORNIA
APPROVED BY: *[Signature]* DATE 7/6/74
R.E. No. 9876

MARK	REVISIONS	APPR. DATE

"as built" e.j.k. 6-75
Approved By: *[Signature]* 9-26-74
Chief Water Utility Engineer DATE

APPROVED BY	BY	DATE	APPROVED BY
PRINCIPAL ENGINEER	<i>[Signature]</i>	9/26/74	<i>[Signature]</i>
PARK DEPARTMENT			
TRAFFIC DIVISION			
CHIEF PUB. WKS. ENGR.			

CITY OF RIVERSIDE, CALIFORNIA
PUBLIC WORKS DEPARTMENT
SEWER PLAN AND PROFILE
INDEX
TRACT 5441

ACCOUNT No.
DRAWING NUMBER
5-986
SHEET 1 OF 6
73-185-B

W.O. 73-185 FOR KAUFMAN & B. ROAD F.B. 1031

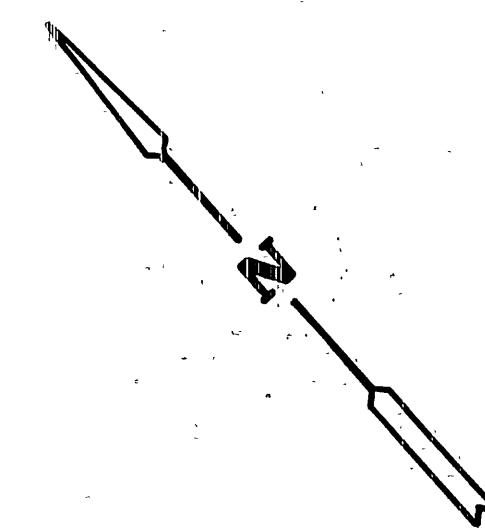
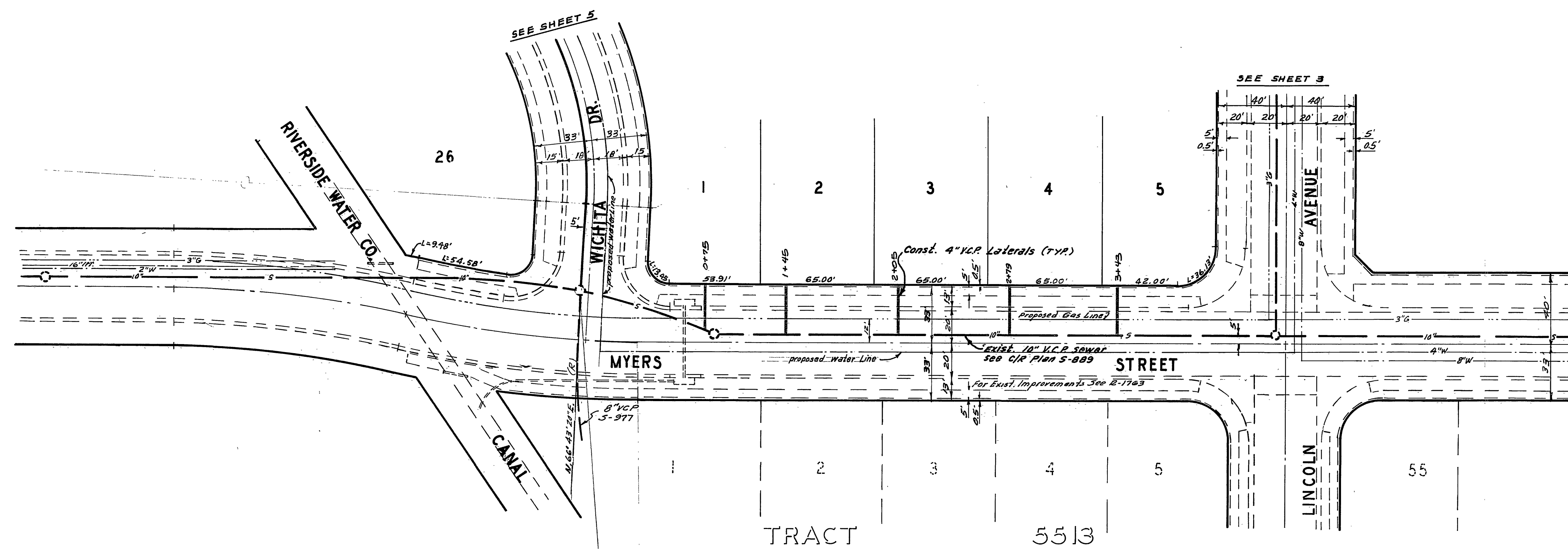
DESIGNED BY REC DRAWN BY B.E.L. CHECKED BY B.S.W.

DATE 12-24-74

SCALE: AS SHOWN

22 23 24 25 26 27 28

SEE SHEET ONE FOR GENERAL NOTES



BENCH MARK

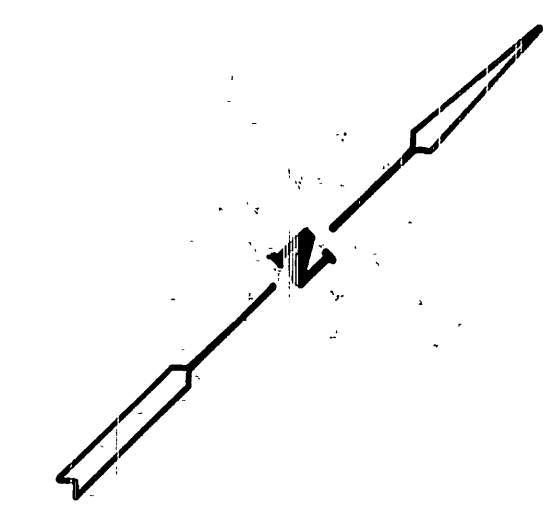
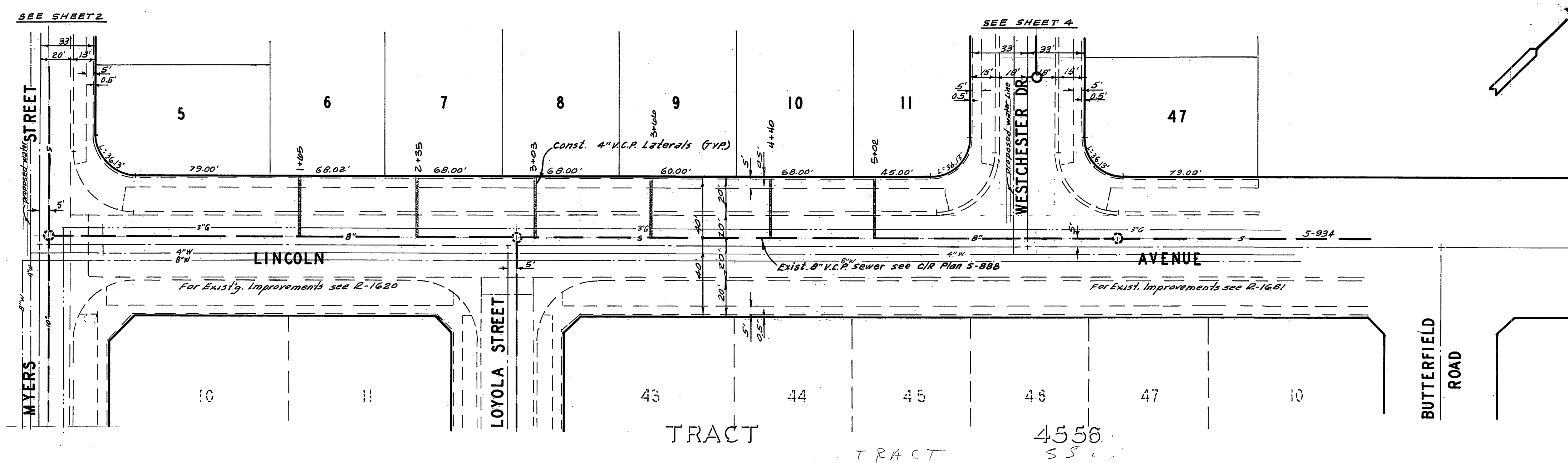
City of Riverside, B.M. #E-4-B being a brass disk in cap well at the intersection of Van Buren Blvd. and Victoria Ave. Elevation 561.950

Approved By: *Howard J. Cream* 9-26-74
 Chief Water Utility Engineer Date

ALBERT A. WEBB ASSOCIATES CIVIL ENGINEERS RIVERSIDE, CALIFORNIA APPROVED BY: <i>Paul N. Wade</i> DATE 9/6/74 R.E. No. 9876	CITY OF RIVERSIDE, CALIFORNIA PUBLIC WORKS DEPARTMENT APPROVED BY: <i>[Signature]</i> DATE 12-24-74 CHIEF PUB. WKS. ENGR.	SEWER PLAN AND PROFILE	ACCOUNT No. DRAWING NUMBER
		MYERS STREET	5-986
W.O. 73-185 FOR KAUFMAN & BROAD F.B. 1032		TRACT 5441	SHEET 2 OF 6
DESIGNED BY: <i>REC</i> DRAWN BY: <i>REL</i> CHECKED BY: <i>[Signature]</i>		SCALE: HORIZ. 1"=40'	73-185-B

0 1 2 3 4 5 6 7

SEE SHEET ONE FOR GENERAL NOTES



BENCH MARK

City of Riverside B.M. *E-4-B being a brass disk in cap well at intersection of Van Buren Blvd. and Victoria Ave. Elevation 891.950

ALBERT A. WEBB ASSOCIATES
 CIVIL ENGINEERS
 RIVERSIDE, CALIFORNIA
 APPROVED BY *[Signature]* DATE 7/6/76
 R.E. No. 9876

MARK	REVISIONS	APPR.	DATE

"25 built" c.s.k. 6-75
 Approved By: *[Signature]* 9-26-74
 Chief Water Utility Engineer Date

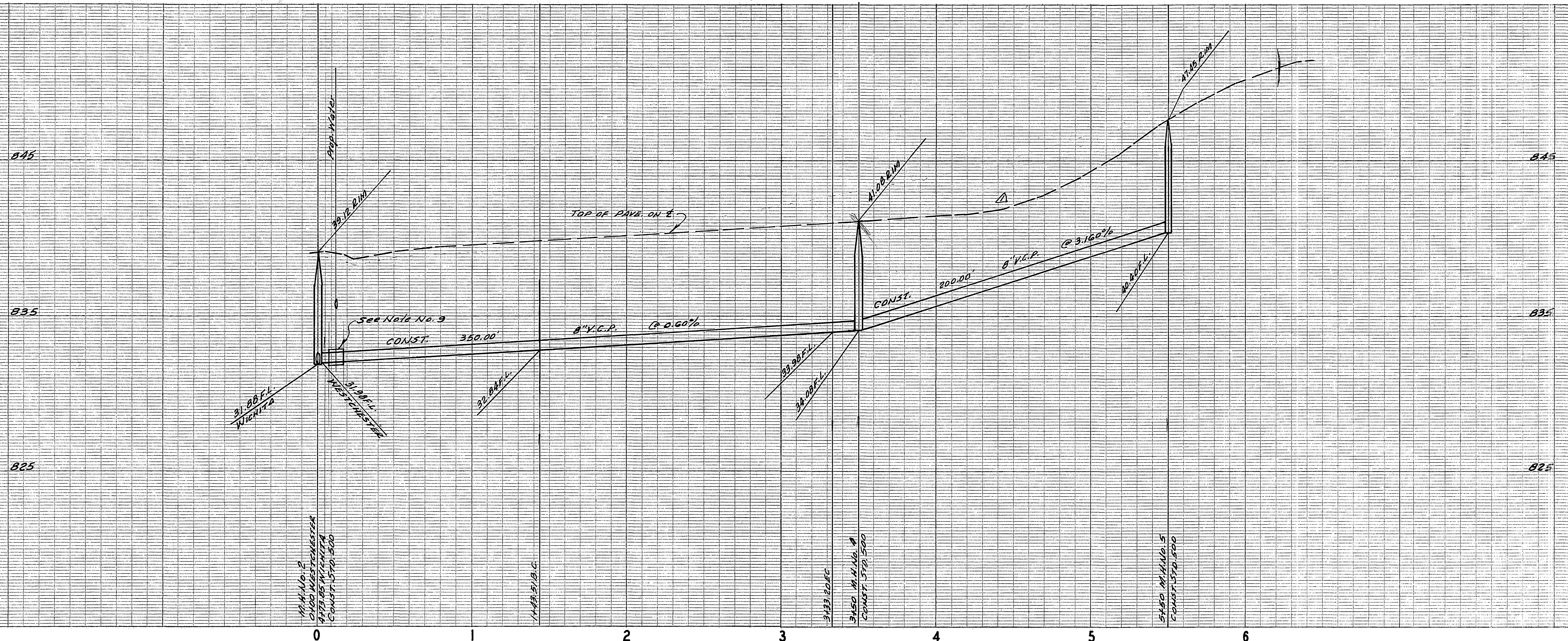
CITY OF RIVERSIDE, CALIFORNIA
 PUBLIC WORKS DEPARTMENT
 APPROVED BY: *[Signature]*
 PRINCIPAL ENGINEER
 PARK DEPARTMENT
 TRAFFIC DIVISION
 CHIEF PUB. WKS. ENGR. *[Signature]* 12-24
 DATE 12-24-74

SEWER PLAN AND PROFILE
 LINCOLN STREET
 TRACT 5441
 SCALE: HORIZ. 1"=40'

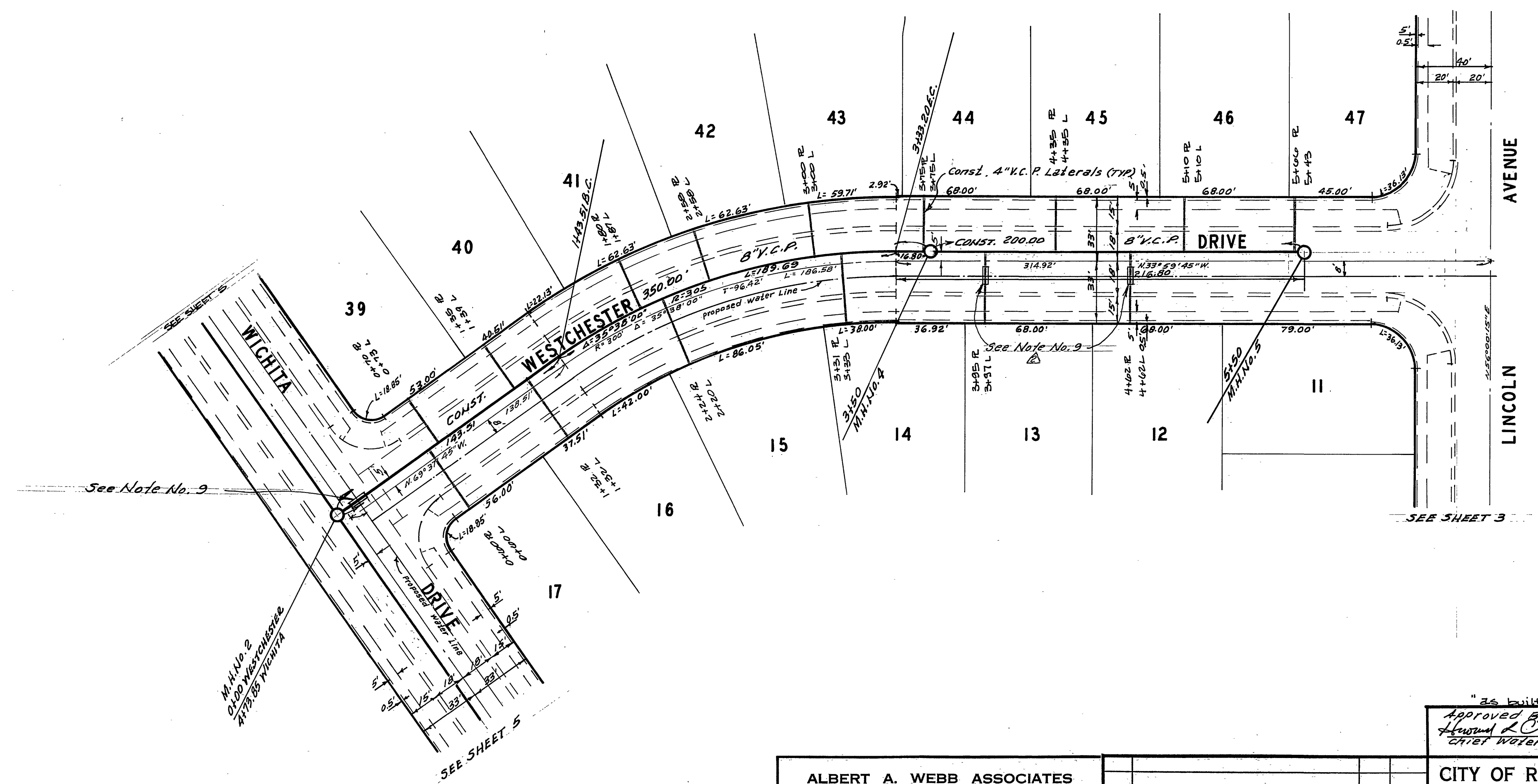
ACCOUNT No.
 DRAWING NUMBER
 5-986
 SHEET 3 OF 6
 73-185-B

W.O. 73-185 FOR RAUFMAN & BROAD F.B. 1032

DESIGNED BY REC DRAWN BY B.E.L. CHECKED BY [Signature]



SEE SHEET ONE FOR GENERAL NOTES



BENCH MARK

City of Riverside B.M. # F-4-B being a brass dist in cap well at the intersection of Van Buren Blvd. and Victoria Ave. Elevation 881.950

Approved By: *Howard L. Creamer* 9-26-74
 Chief Water Utility Engineer DATE

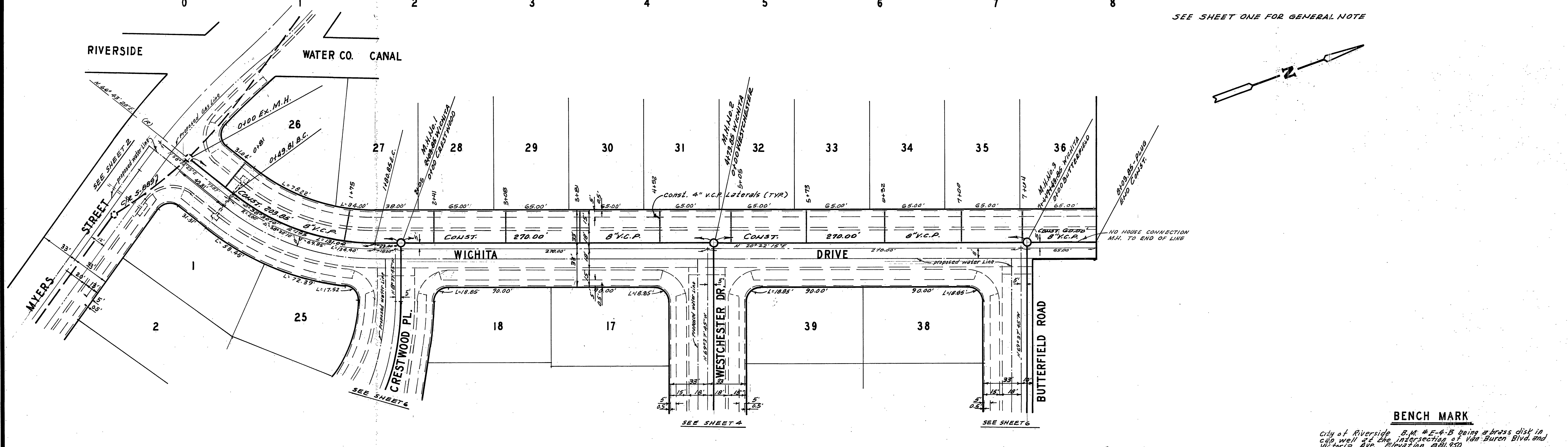
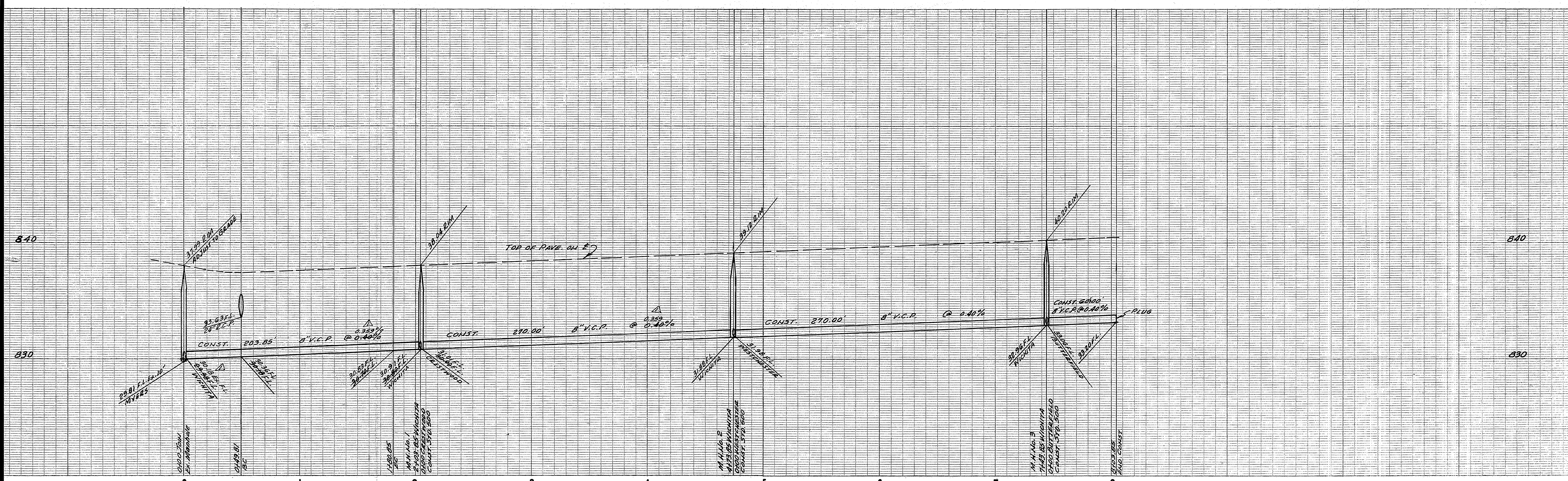
ALBERT A. WEBB ASSOCIATES
 CIVIL ENGINEERS
 RIVERSIDE, CALIFORNIA
 APPROVED BY: *Albert A. Webb* DATE 9/6/74
 R.E. No. 9876
 W.O. 73-785 FOR KAUFMAN & BROAD F.B. 1032

MARK	REVISIONS	APPR.	DATE
⊕	Added Sewer Lateral Encasement	<i>[Signature]</i>	11/14/74
Δ	Revised St. Grade	<i>[Signature]</i>	11/14/74

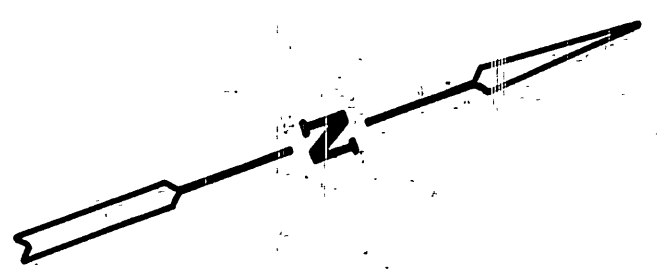
CITY OF RIVERSIDE, CALIFORNIA
 PUBLIC WORKS DEPARTMENT
 APPROVED BY: *[Signature]* DATE 12-24-74
 PRINCIPAL ENGINEER
 PARK DEPARTMENT
 TRAFFIC DIVISION
 CHIEF PUB. WKS. ENGR.

SEWER PLAN AND PROFILE
 WESTCHESTER DRIVE
 TRACT 5441
 SCALE: HORIZ. 1"=40', VERT. 1"=4'

ACCOUNT No.
 DRAWING NUMBER
 5-986
 SHEET 4 OF 6
 73-185-B



SEE SHEET ONE FOR GENERAL NOTE



BENCH MARK

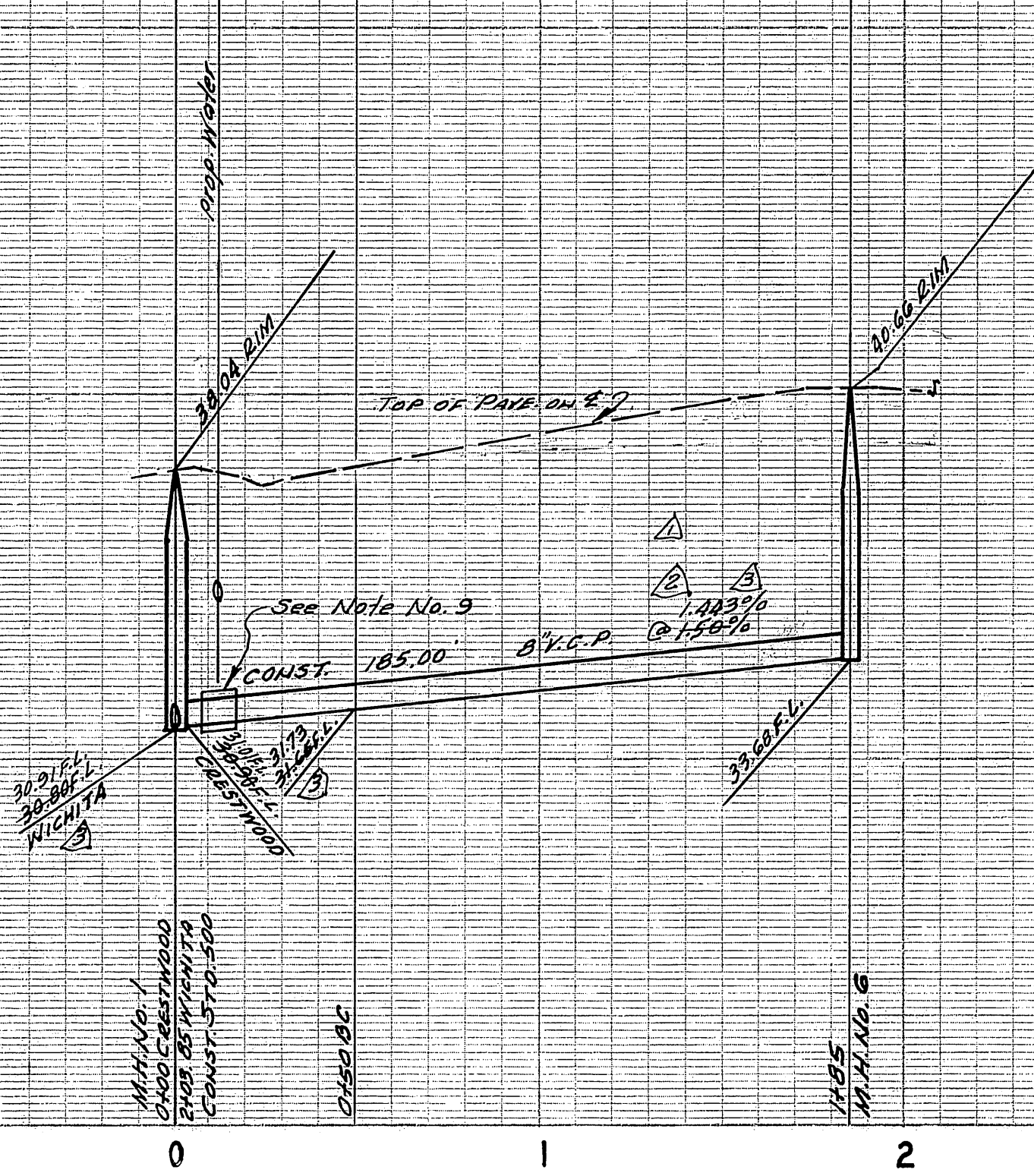
City of Riverside B.M. # E-A-B being a brass disk in cap well at the intersection of Van Buren Blvd. and Victoria Ave. Elevation 881.950

Approved By: *L. H. Williams* 9-26-74
 Chief Water Utility Engineer Date

ALBERT A. WEBB ASSOCIATES CIVIL ENGINEERS RIVERSIDE, CALIFORNIA APPROVED BY: <i>L. H. Williams</i> DATE 9/6/74 R.E. No. 9876 W.D. 73-185 FOR KAUFMAN & BROAD F.B. 1232	CITY OF RIVERSIDE, CALIFORNIA PUBLIC WORKS DEPARTMENT APPROVED BY: <i>[Signature]</i> DATE 9/26/74 PRINCIPAL ENGINEER PARK DEPARTMENT TRAFFIC DIVISION CHIEF PUB. WKS. ENGR. DATE 12-24-74	SEWER PLAN AND PROFILE WICHITA DRIVE TRACT 5441 SCALE: HORIZ. 1" = 40' Vert. 1" = 4'	ACCOUNT No.
			DRAWING NUMBER
			5-986
			SHEET 5 OF 6
			73-185-B

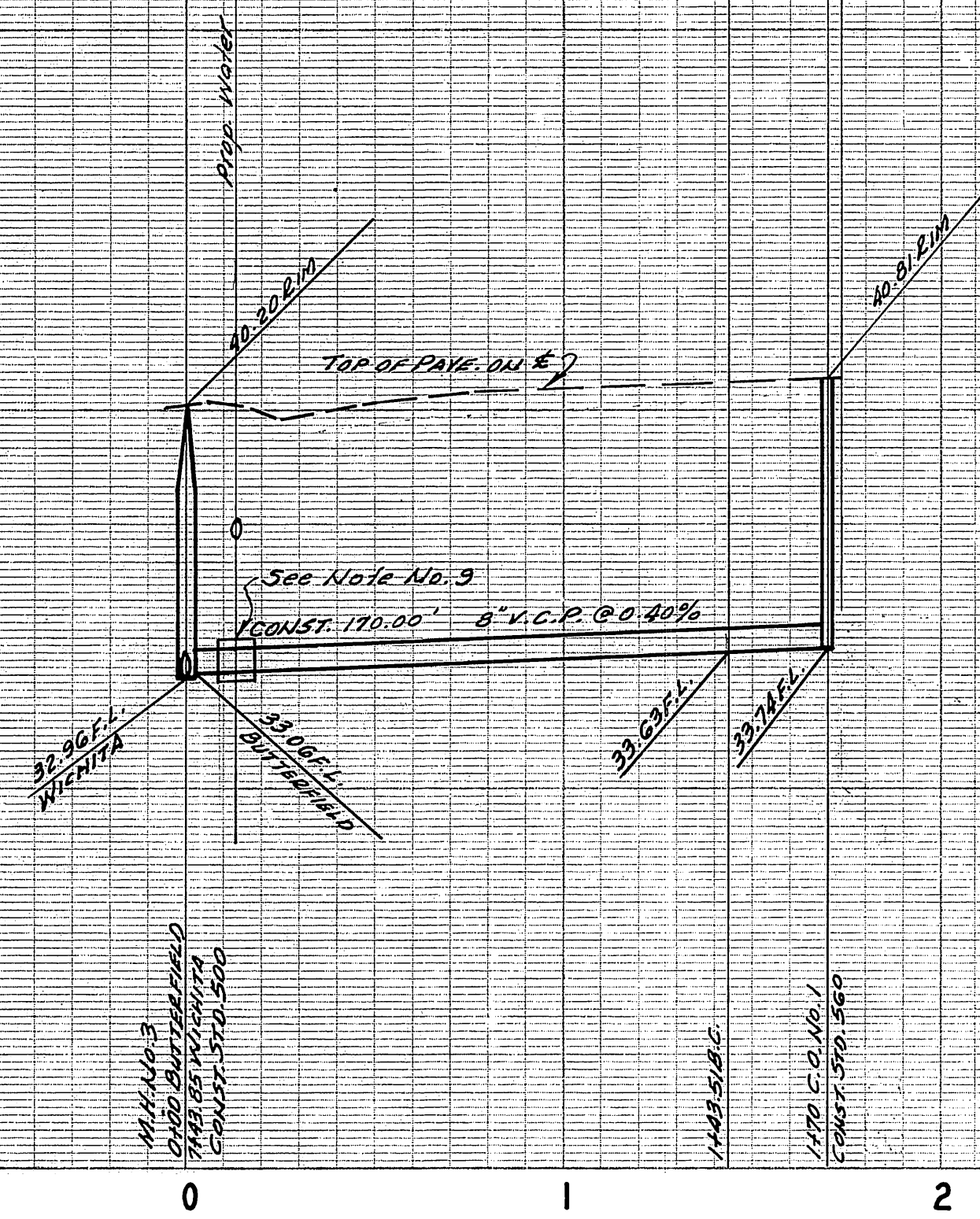
840

830

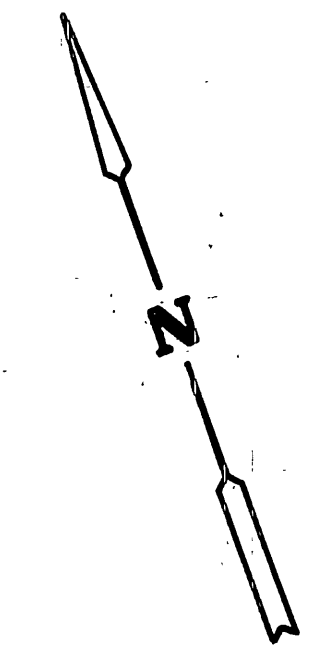
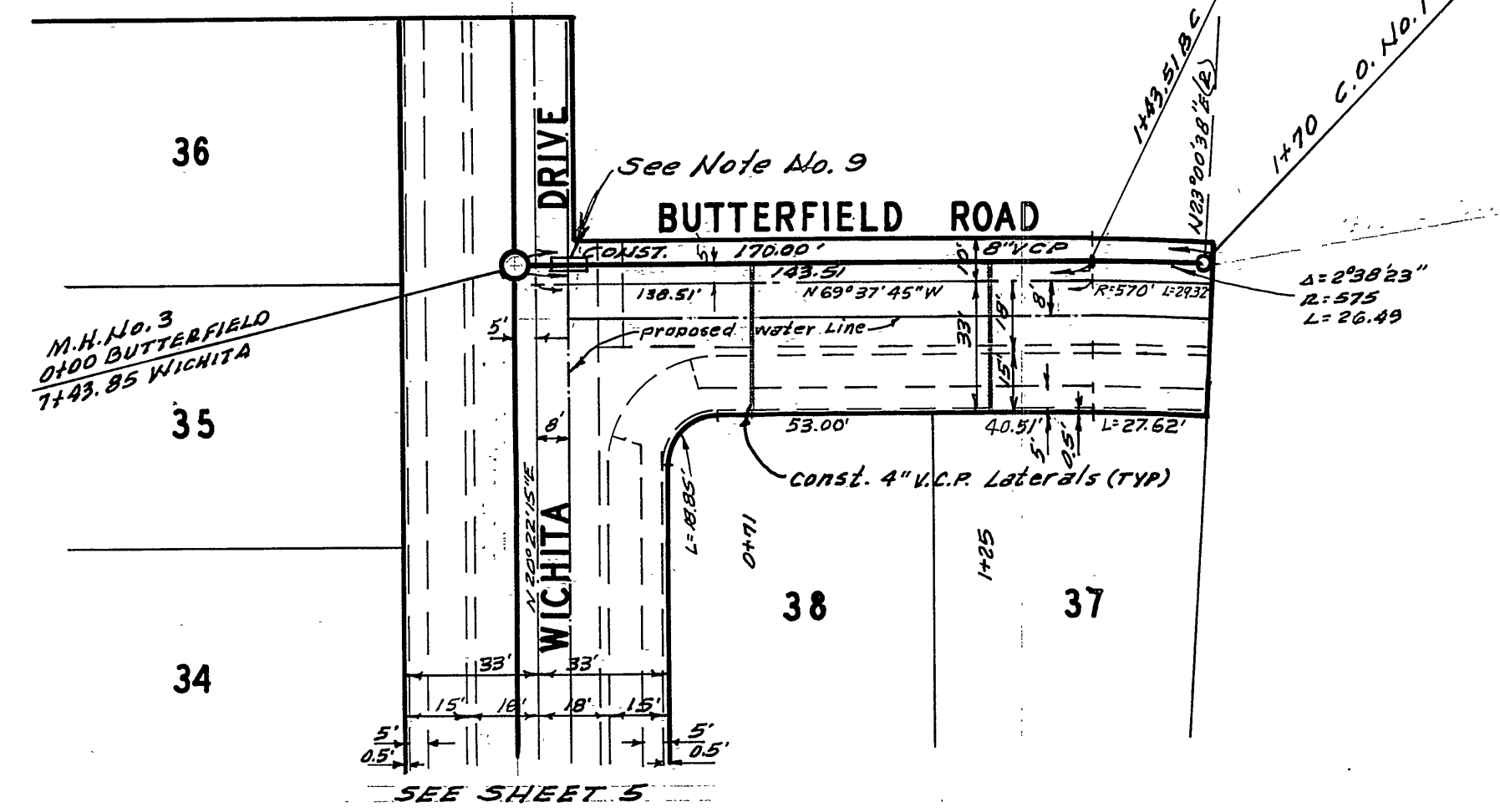
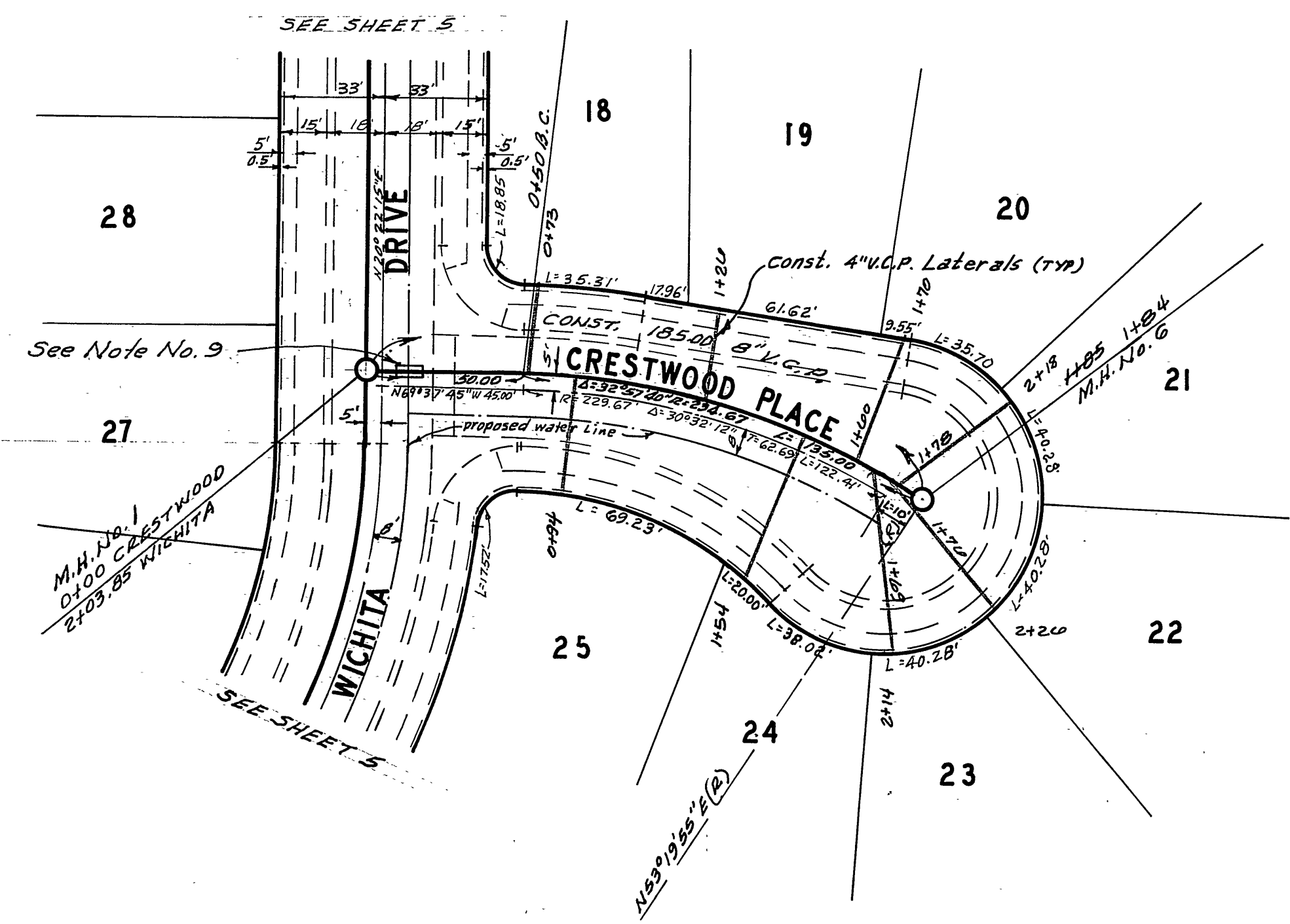
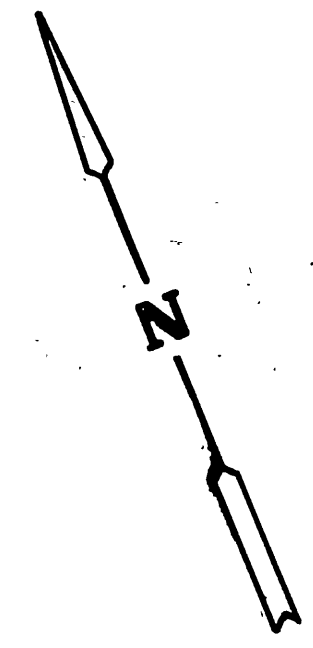


840

830



SEE SHEET ONE FOR GENERAL NOTES



BENCH MARK

City of Riverside B.M. # E-4-B being a brass disk in cap well at the intersection of Van Buren and Victoria Ave. Elevation 881.950

ALBERT A. WEBB ASSOCIATES CIVIL ENGINEERS RIVERSIDE, CALIFORNIA APPROVED BY: <i>[Signature]</i> DATE: 9/6/74 R.E. No. 9876	CITY OF RIVERSIDE, CALIFORNIA PUBLIC WORKS DEPARTMENT APPROVED BY: <i>[Signature]</i> DATE: 9-26-74 Chief Water Utility Engineer	SEWER PLAN AND PROFILE CRESTWOOD PLACE BUTTERFIELD ROAD TRACT 5441	ACCOUNT No.
			DRAWING NUMBER
W.O. 73-185 FOR KAUFMAN ROAD E.B. 1032	DESIGNED BY: REC DRAWN BY: BEL CHECKED BY: [Signature]	DATE: 12-24-74	SHEET 6 OF 6 73-185-B