

INDEX MAP  
NO SCALE

**GENERAL NOTES**

1. Construction shall be in accordance with the Standard Specifications for Public Works Construction, 1973 Edition, and City of Riverside Standard Drawings.
2. It shall be the responsibility of the contractor to clear the right of way in accordance with the provisions of the law as it affects each utility including irrigation lines and appurtenances and at no cost to the City.
3. Pipe shall be bedded per Case I, Standard Drawing No. 452, unless otherwise specified on plans.
4. Location of wyes and laterals to be determined at the direction of the owner.
5. All stubs and laterals to be constructed in accordance with Standard Drawing No. 562. Stubs shall be plugged and capped.
6. Manhole frames and covers to be set as noted in profile by sewer contractor after final paving of street.
7. Laterals are to be 4" and extended to property line.
8. Prior to construction of sewer, contractor is to expose existing sewer and contact the Engineer for verification of existing elevations.
9. A plug shall be installed and will remain in place, where the new sewer connects with the existing sewer until such time that the new sewer is accepted by the City.

**NOTICE TO CONTRACTOR**

The existence and location of underground utility pipes or structures shown on these plans are obtained by a search of the available records. To the best of our knowledge, there are no existing utilities except as shown on these plans.  
The contractor is required to take due precautionary measures to protect the utility lines shown and any other lines not of record or not shown on these plans.

**BENCH MARK**

Chisled 10" north of Tract 5137 boundary on the west curb of Claridge Dr. Elevation 1298.31 per R.A. Webb R.S. 1044/98 & C.P. plan No. S-815 dated 8/7/72.

ALBERT A. WEBB ASSOCIATES  
CIVIL ENGINEERS  
RIVERSIDE, CALIFORNIA  
APPROVED BY *[Signature]* DATE 7/16/74  
R.E. No. 9876

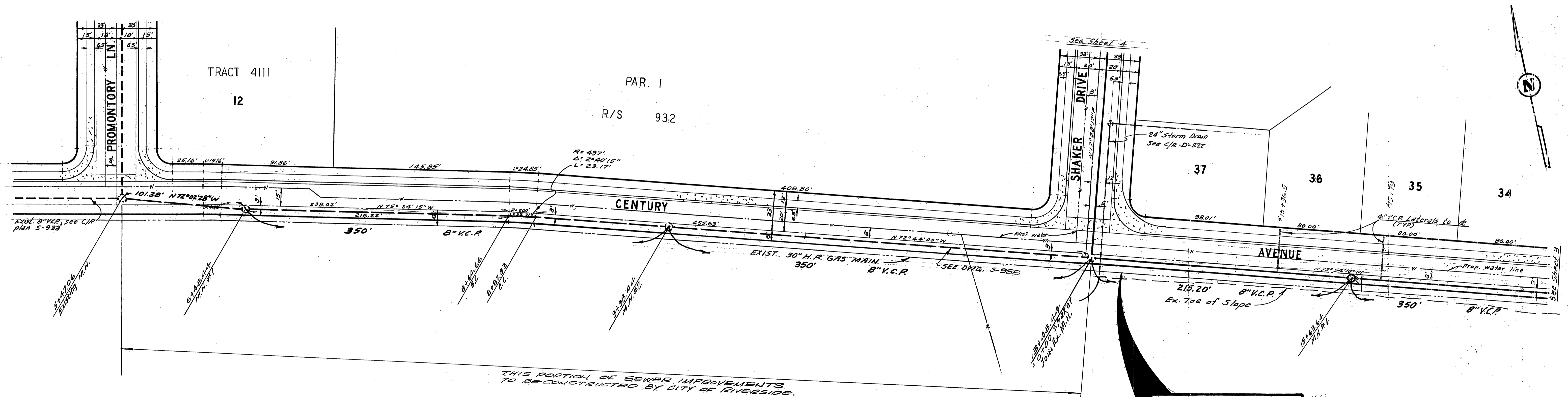
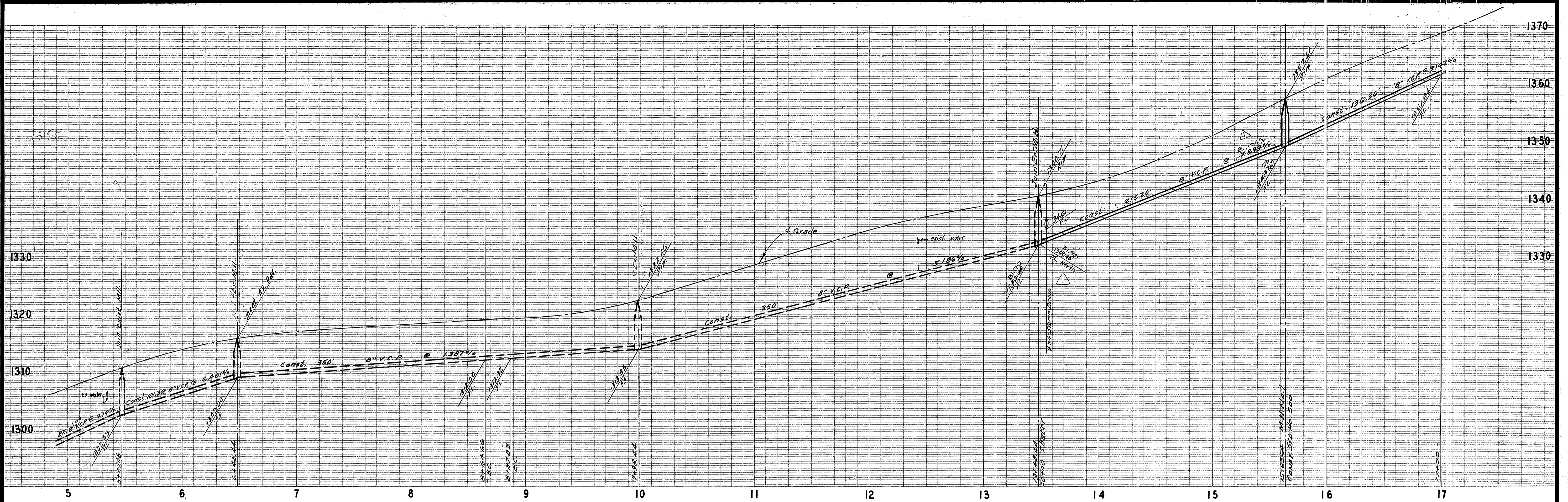
MARK	REVISIONS	APPR.	DATE

Approved By *[Signature]* 7-22-74  
City Engineer  
CITY OF RIVERSIDE, CALIFORNIA  
PUBLIC WORKS DEPARTMENT  
APPROVED BY *[Signature]* DATE 12/24/74  
PRINCIPAL ENGINEER  
PARK DEPARTMENT  
TRAFFIC DIVISION  
CHIEF PUB. WKS. ENGR.

\*AS BUILT 8-16 KPT  
SEWER PLAN AND PROFILE  
INDEX SHEET  
TRACT 5900  
SCALE: None

ACCOUNT No. 74-20  
DRAWING NUMBER  
S-987  
SHEET 1 OF 5  
74-20-B





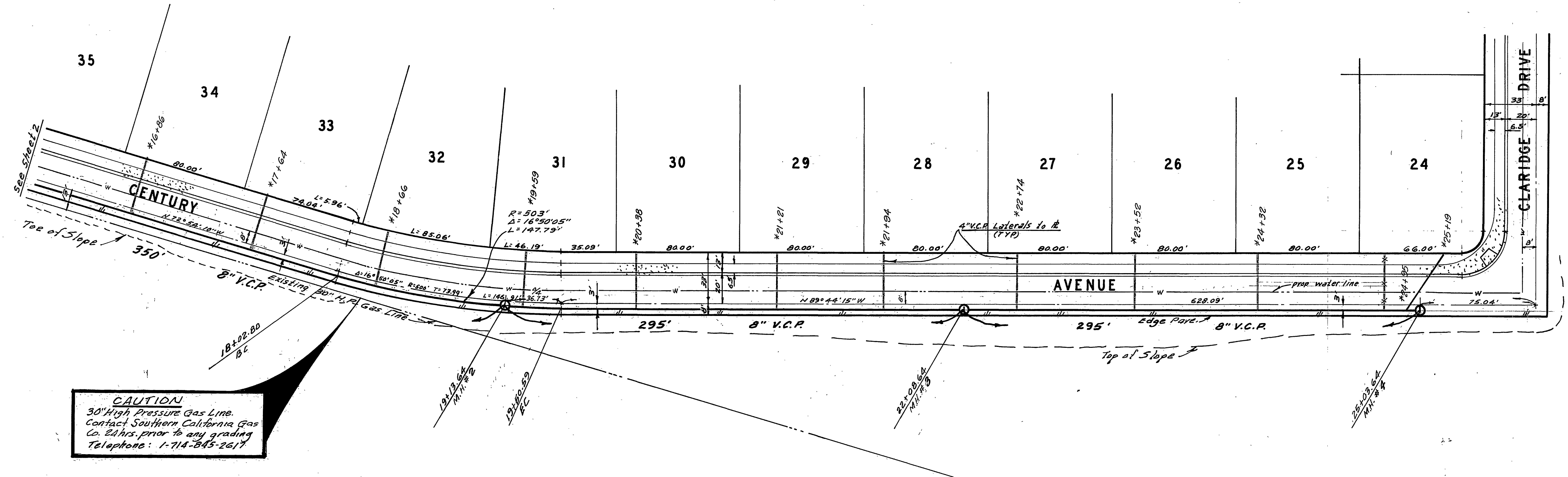
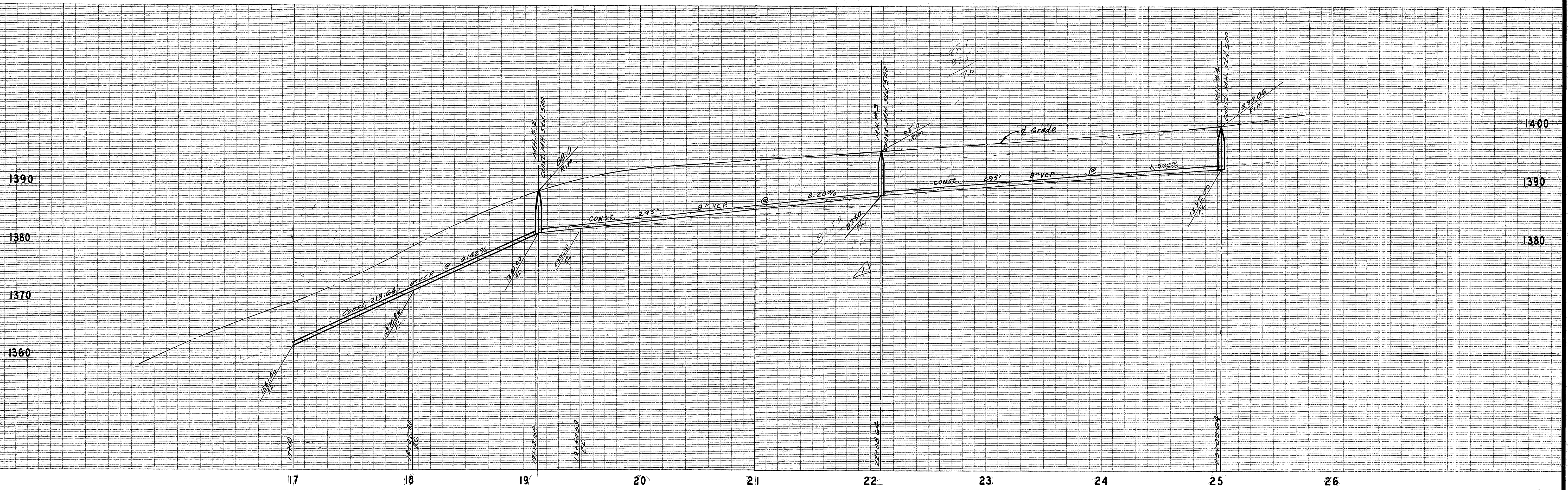
THIS PORTION OF SEWER IMPROVEMENTS TO BE CONSTRUCTED BY CITY OF RIVERSIDE.

**CAUTION**  
30" High Pressure Gas Line.  
Contact Southern California Gas Co. 24 hrs. prior to any grading.  
Telephone: 1-714-245-2617

**BENCH MARK**  
Chisled "0" 1' north of Tract 5137 Body on the west curb of Claridge Dr. Elev. 1339.31 per A.R. Webb P.S. 104139 & C.R.P. 104 No. 5-019 Dated 01/1/72

ALBERT A. WEBB ASSOCIATES CIVIL ENGINEERS RIVERSIDE, CALIFORNIA APPROVED BY: <i>Albert A. Webb</i> DATE: 7/15/74 R.E. No. 9876	DESIGNED BY: <i>LEB</i> DRAWN BY: <i>SEL</i> CHECKED BY: <i>WDA</i>	Approved By: <i>Howard A. Cream</i> 7-22-74 Chief Water Utility Engineer Date	CITY OF RIVERSIDE, CALIFORNIA PUBLIC WORKS DEPARTMENT APPROVED BY: <i>William D. Henderson</i> DIRECTOR OF PUBLIC WORKS DATE: 12/24/74	ACCOUNT No. 74-20 DRAWING NUMBER <b>S-987</b>
		SEWER PLAN AND PROFILE <b>CENTURY AVENUE</b> TRACT 5900 SCALE: Horiz. 1"=40', Vert. 1"=8'		SHEET 2 OF 5 74-20-B



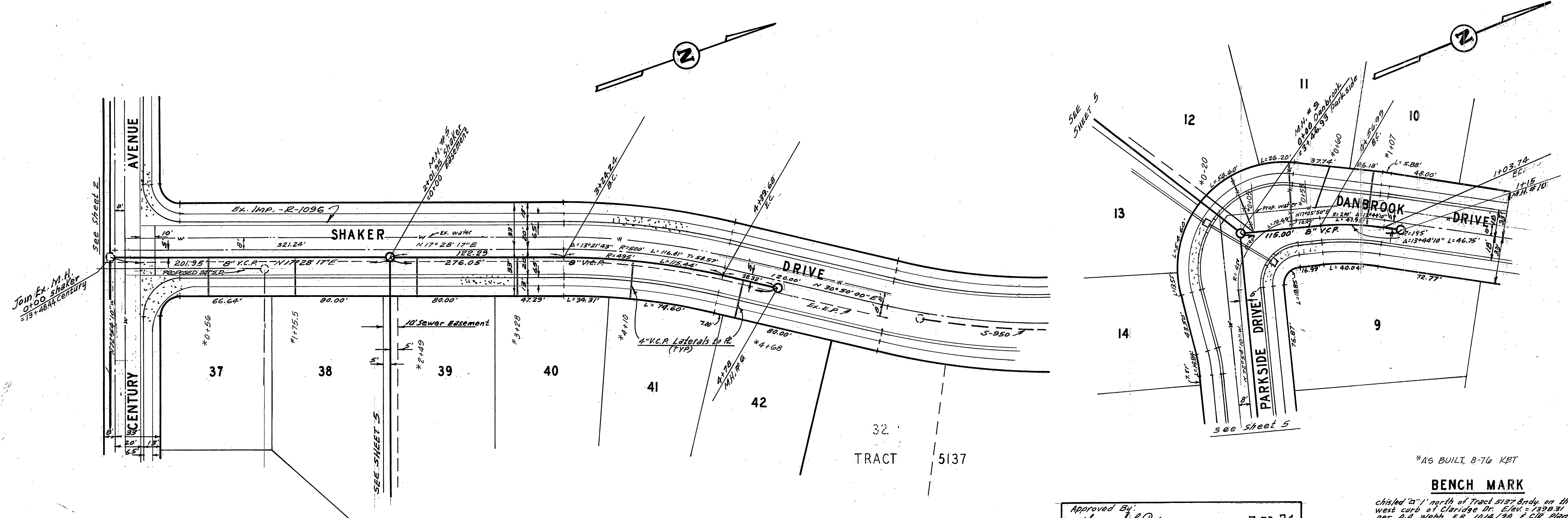
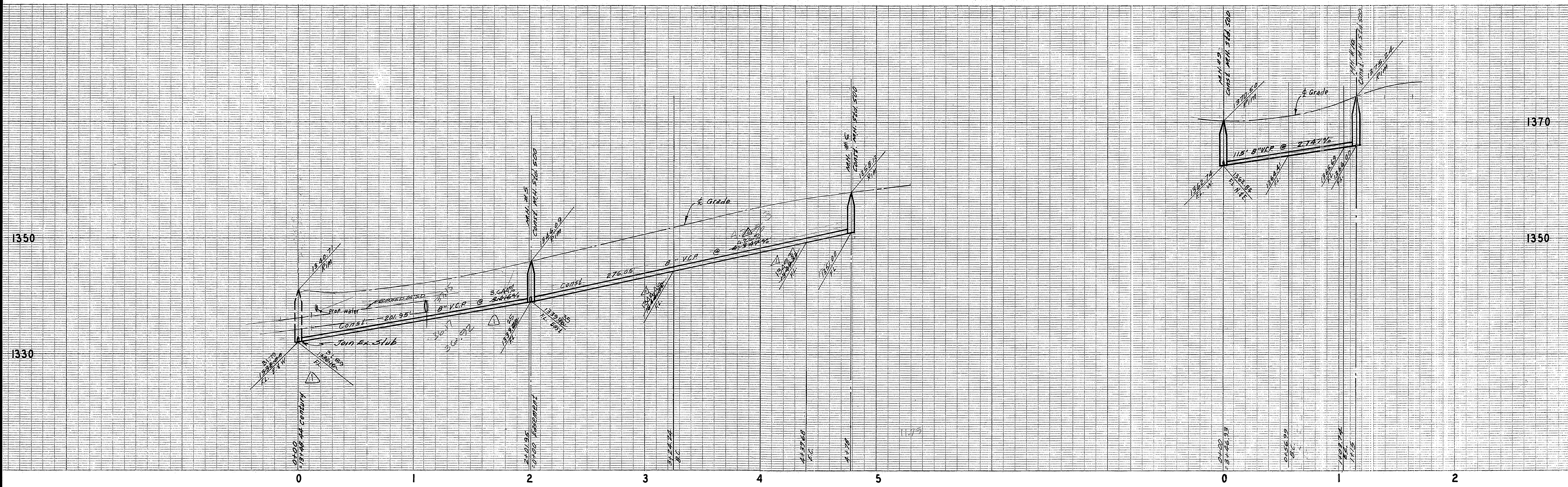


**CAUTION**  
 30" High Pressure Gas Line.  
 Contact Southern California Gas  
 Co. E.A.H. prior to any grading.  
 Telephone: 1-714-843-2617

**BENCH MARK**  
 Chisled to 1' north of Tract 5137 Body on the  
 west curb of Claridge Dr. Elev = 1398.31  
 per A.E. Wash. Co. 10/1/98 site plan no.  
 5-818 dated 8/1/72.

<b>ALBERT A. WEBB ASSOCIATES</b> CIVIL ENGINEERS RIVERSIDE, CALIFORNIA APPROVED BY: <i>Albert A. Webb</i> DATE: 7/16/74 R.E. No. 9876 W.O. 74-20 FOR: BRATTAIN CONST. CO. F.B. 1029	Approved By: <i>Lawrence Orsman</i> Chief Water Utility Engineer Date: 7-22-74	<b>CITY OF RIVERSIDE, CALIFORNIA</b> <b>PUBLIC WORKS DEPARTMENT</b>		ACCOUNT No. 74-20 DRAWING NUMBER <b>S-987</b>
		APPROVED BY: <i>William D. Hordley</i> DIRECTOR OF PUBLIC WORKS DATE: 12/24/74	SEWER PLAN AND PROFILE <b>CENTURY AVENUE</b> TRACT 5900 SCALE: Horiz. 1"=40'; Vert. 1"=8'	SHEET 3 OF 5 74-20-B

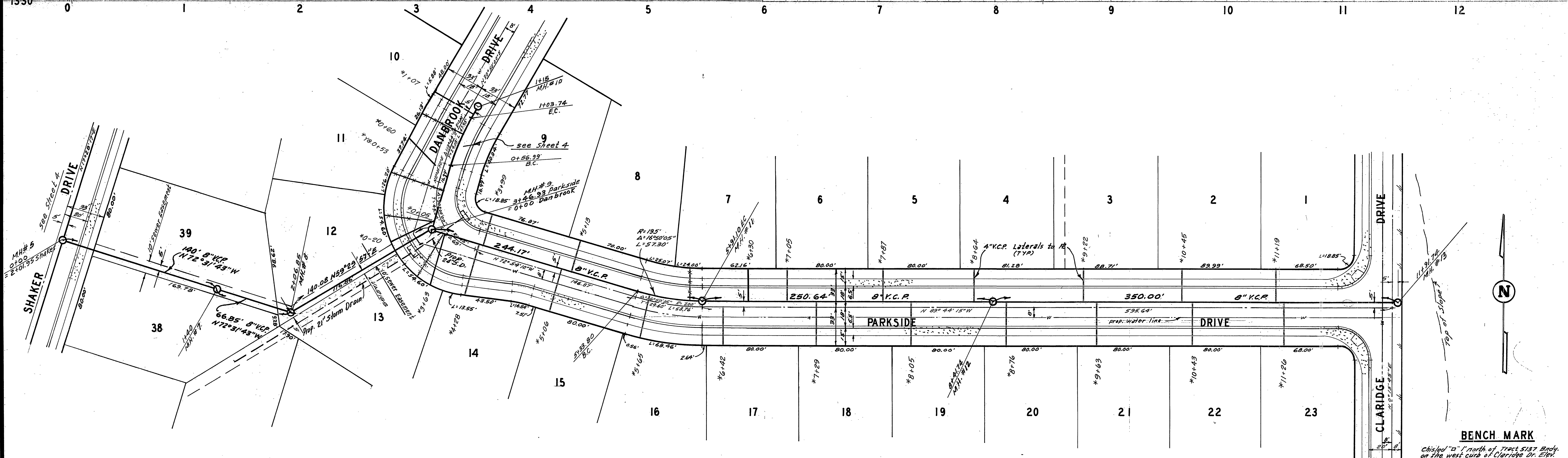
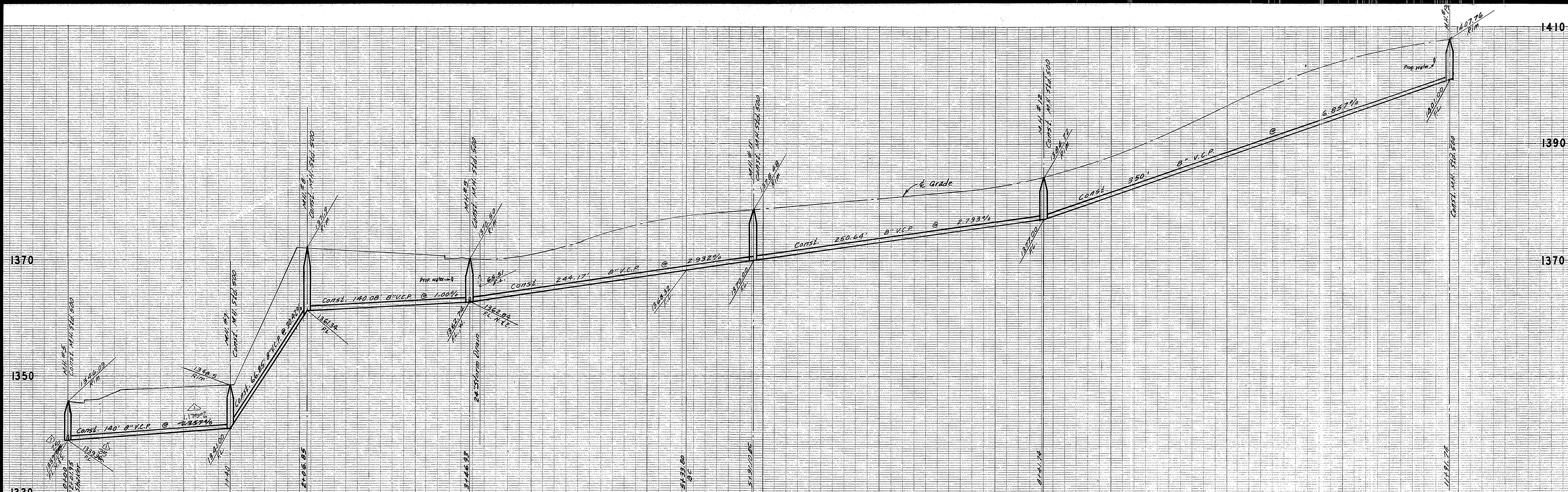




**BENCH MARK**  
 \*AS BUILT 8-76 KBT  
 chiseled '20' north of Tract 5137 on the west curb of Claridge Dr. Elev = 1350.31 per A.A. Webb, P.E. 10/14/90 & CIP Plan No. S-819 Dated 07/72.

<b>ALBERT A. WEBB ASSOCIATES</b> CIVIL ENGINEERS RIVERSIDE, CALIFORNIA APPROVED BY: <i>[Signature]</i> DATE: 7/16/74 R.E. No. 9876 W.O. 74-20 FOR BRATTAIN CONST. CO. F.B. 1029	DESIGNED BY: <i>[Signature]</i> DRAWN BY: <i>[Signature]</i> CHECKED BY: <i>[Signature]</i>	Approved By: <i>[Signature]</i> 7-22-74 Chief Water Utility Engineer Date	<b>CITY OF RIVERSIDE, CALIFORNIA</b> PUBLIC WORKS DEPARTMENT APPROVED BY: <i>[Signature]</i> DATE: 12/24/74 CHIEF PUB. WKS. ENGR.	<b>SEWER PLAN AND PROFILE</b> <b>SHAKER DRIVE</b> <b>DANBROOK DRIVE</b> TRACT 5900 SCALE: Horiz. 1"=40' Vert. 1"=8'	ACCOUNT No. 74-20 DRAWING NUMBER <b>S-987</b> SHEET 4 OF 5 <b>74-20-B</b>
		PRINCIPAL ENGINEER: <i>[Signature]</i> PARK DEPARTMENT: <i>[Signature]</i> TRAFFIC DIVISION: <i>[Signature]</i> DATE: 12/24/74			





**BENCH MARK**

Chisled to 1' north of Tract 5137 Bndy on the west curb of Claridge Dr. Elev. = 1398.31 per N.A. Webb, E.E. 10/14/58 & C.R. plan No. S-819 dated 8/7/72.

Approved By: *Howard D. Peterson* 7-22-74  
 Chief Water Utility Engineer Date

ALBERT A. WEBB ASSOCIATES  
 CIVIL ENGINEERS  
 RIVERSIDE, CALIFORNIA  
 APPROVED BY: *Albert A. Webb* DATE 7/16/74  
 R.E. No. 9876

DESIGNED BY: *LEE* DRAWN BY: *BEL* CHECKED BY: *WILLIAM*

CITY OF RIVERSIDE, CALIFORNIA  
 PUBLIC WORKS DEPARTMENT  
 APPROVED BY: *William D. Anderson*  
 DIRECTOR OF PUBLIC WORKS  
 DATE 12/21/74

SEWER PLAN AND PROFILE  
**PARKSIDE DRIVE**  
 EASEMENT  
 TRACT 5900  
 SCALE: Horiz: 1"=40' Vert: 1"=8'

ACCOUNT No. 74-20  
 DRAWING NUMBER  
**S-987**  
 SHEET 5 OF 5  
 74-20-B