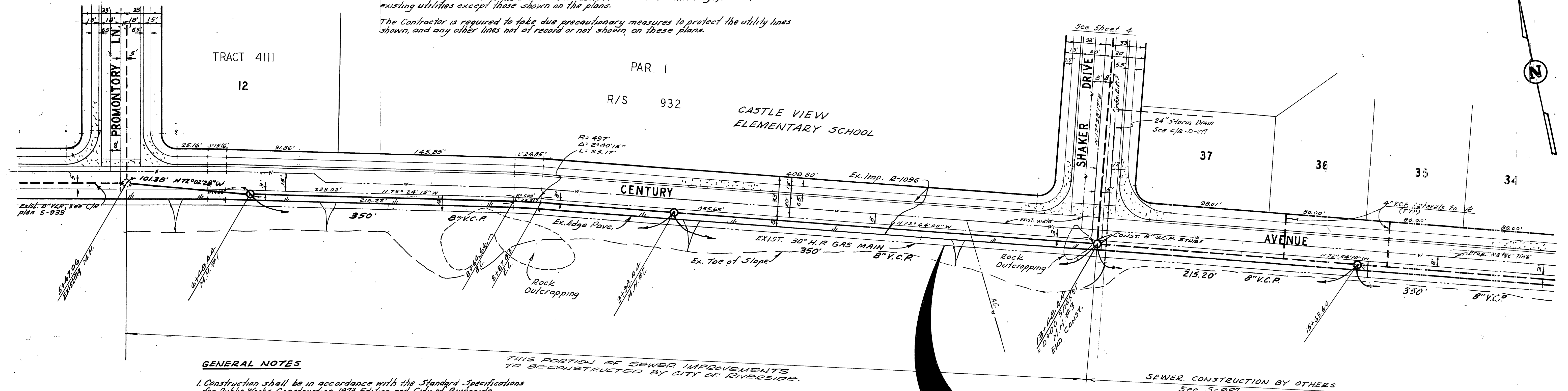


NOTICE TO CONTRACTOR

The existence and location of underground utility pipes or structures shown on these plans are obtained by a search of the available records to the best of our knowledge, there are no existing utilities except those shown on the plans.
 The Contractor is required to take due precautionary measures to protect the utility lines shown, and any other lines not of record or not shown on these plans.



GENERAL NOTES

- Construction shall be in accordance with the Standard Specifications for Public Works Construction, 1973 Edition, and City of Riverside Standard Drawings.
- It shall be the responsibility of the Contractor to clear the right of way in accordance with the provisions of the law as it affects each utility including irrigation lines and appurtenances.
- Pipe shall be bedded per Case J, Standard Dwg. No. 452 unless otherwise specified on the Plans.
- All stubs shall be constructed in accordance with Standard Drawing No. 562. Stubs shall be plugged and copped.
- Manhole frames and covers to be set as noted in profile.
- Prior to construction of sewer, Contractor is to expose existing sewer and contact the Engineer for verification of elevation.
- A plug shall be installed and shall remain in place, where the new sewer connects with the existing sewer until such time that the new sewer is accepted by the City.

THIS PORTION OF SEWER IMPROVEMENTS TO BE CONSTRUCTED BY CITY OF RIVERSIDE.

CAUTION
 30" High Pressure Gas Line.
 Contact Southern California Gas Co. 24 hrs. prior to any grading.
 Telephone: 1-714-845-2617

Approved By: *Howard J. Orman* 7-22-74
 Chief Water Utility Engineer Date

ALBERT A. WEBB ASSOCIATES
 CIVIL ENGINEERS
 RIVERSIDE, CALIFORNIA
 APPROVED BY: *Albert A. Webb* DATE: 7/15/74
 R.E. No. 9876

CITY OF RIVERSIDE, CALIFORNIA
 PUBLIC WORKS DEPARTMENT
 APPROVED BY: *[Signature]* DATE: 1-20-75
 PRINCIPAL ENGINEER
 PARK DEPARTMENT
 TRAFFIC DIVISION
 CHIEF PUB. WKS. ENGR.

BENCH MARK
 Chained to 1' north of Tract 5117, 5118 on the west curb of Carnegie St. Elev. 1398.51 per A.A. Webb, P.E. 10/16/98 & CIR plan No. 5-819 dated 8/7/72.

SEWER PLAN AND PROFILE
CENTURY AVENUE
 SEWER EXTENSION FOR TRACT 5900
 SCALE: Horiz. 1"=40' Vert. 1"=8'
 ACCOUNT No. 32-577-543
 DRAWING NUMBER
5-988
 SHEET 1 OF 1
 74-20-B

W.D. 74-20 FOR: BRATTAIN CONST. CO. F.B. 1029

DESIGNED BY: LEB DRAWN BY: BEL CHECKED BY: [Signature]

DATE: 1-20-75