

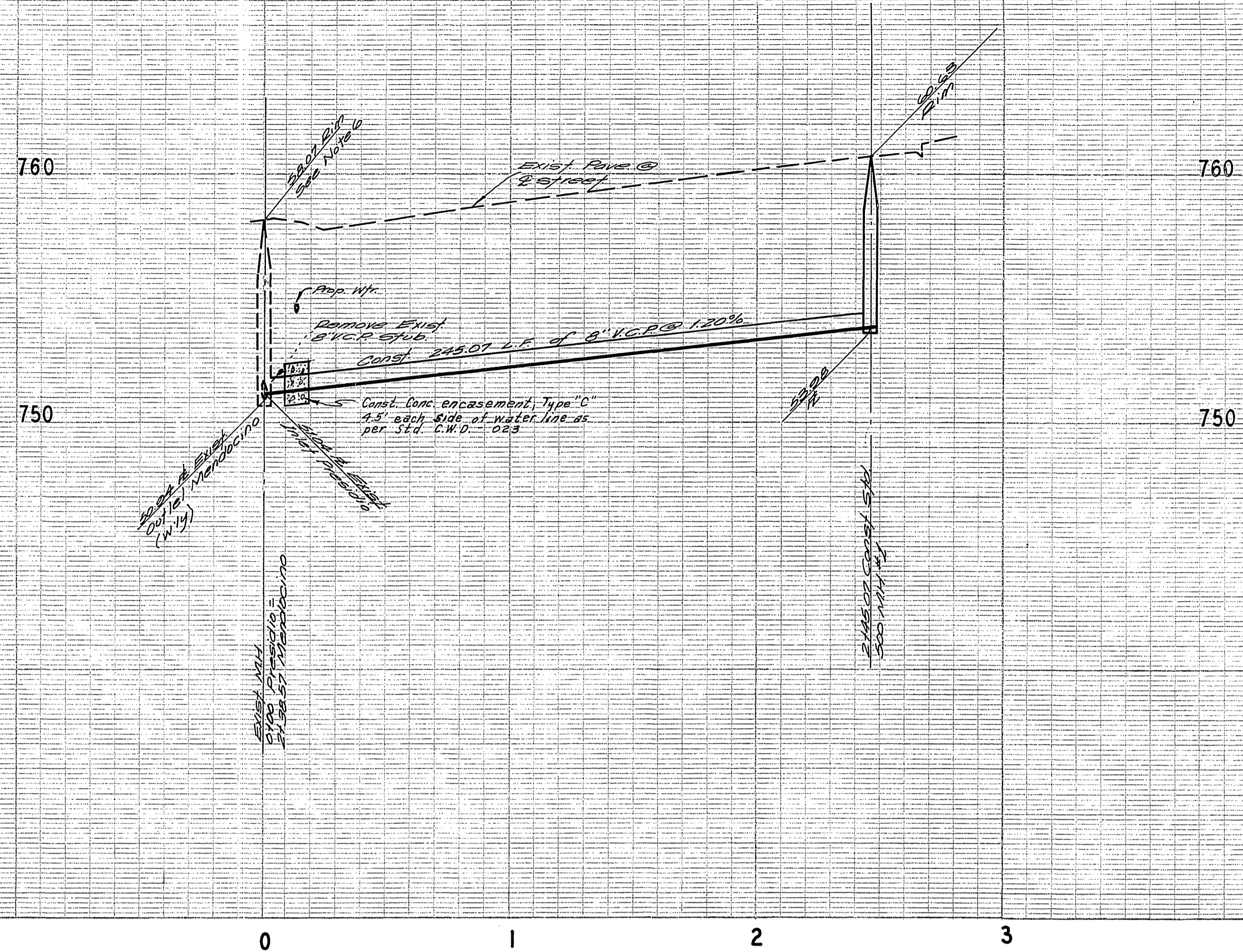
GENERAL NOTES

1. Construction shall be in accordance with the Standard Specifications for Public Works construction, 1973 Edition, and City of Riverside Standard Drawings.
2. Location of existing wyes are shown with size, additional wyes and laterals on Crest Ave. & Presidio Circle to be determined at the direction of the owner.
3. ~~Manhole frames and covers to be set at grade shown.~~
4. Prior to construction of sewer contractor shall expose existing sewer and verify its existing elevation and location.
5. It shall be the responsibility of the contractor to clear the right of way in accordance with the provisions of law as it affects each utility including irrigation lines and appurtenances and at no cost to the City.
6. The sewer contractor shall adjust all manholes, including existing manholes, to final grade after paving is completed.
7. A plug shall be installed and will remain in place where the new sewer connects with the exist sewer until such time as the new sewer is accepted by the city.
8. Existing wyes in Crest Ave. and Leucadia Ln. to be modified to clear Storm Drain as directed in field.

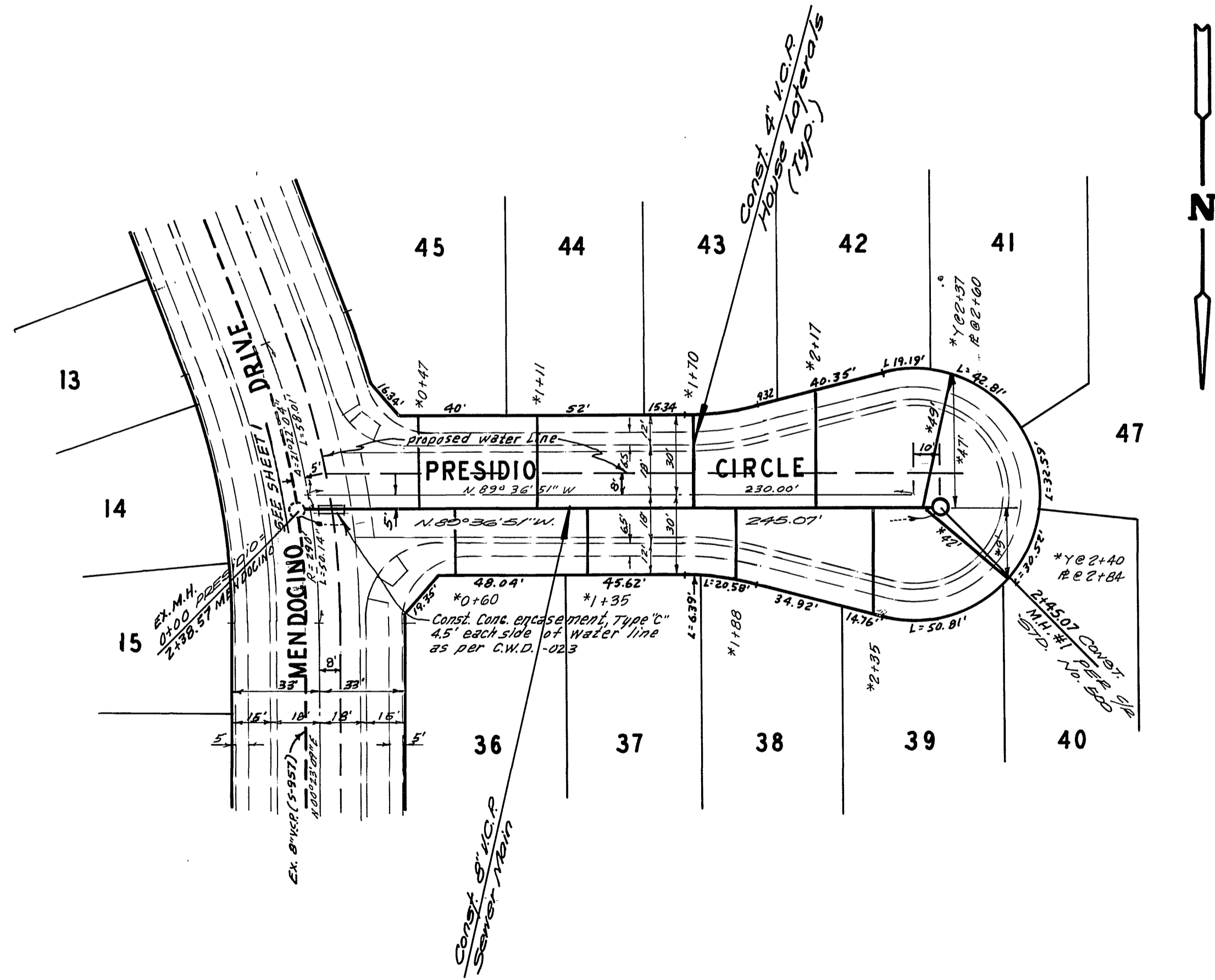
BENCH MARK

PK nail in East curb of Tyler St. on Gaylord produced per City of Riverside P.B. 70611 Elev. 778.21 (Adjusted to C.R. Datum Elev. 778.09 in Sept 1973)

ALBERT A. WEBB ASSOCIATES CIVIL ENGINEERS RIVERSIDE, CALIFORNIA APPROVED BY: <i>L.A. Marshall</i> DATE: 12-15-74 R.E. No. 16036	APPROVED BY: <i>Glenn D. Jensen</i> DATE: 12-9-74 CHIEF WATER UTILITY ENGINEER		CITY OF RIVERSIDE, CALIFORNIA PUBLIC WORKS DEPARTMENT		SEWER PLAN INDEX TRACT 5522-1		ACCOUNT No. DRAWING NUMBER 5-989
	APPROVED BY: <i>[Signature]</i> DATE: 12-24-74 CHIEF PUB. WKS. ENGR.		APPROVED BY: <i>[Signature]</i> DATE: 12-24-74 DIRECTOR OF PUBLIC WORKS		SHEET 1 OF 2		74-212-B
W.O. 74-272 FOR: Andrews Development F.B. 1031		DESIGNED BY: <i>[Signature]</i> DRAWN BY: <i>[Signature]</i> CHECKED BY: <i>[Signature]</i>		SCALE: 1" = 50'		*AS BUILT 8-76 RPT	



SEE SHEET 1 FOR GENERAL NOTES



BENCH MARK
 P.K. rail in East curb of Tyler St. on E Gayland produced
 per City of Riverside F.B. 7041 Elev. 778.21
 (Adjusted to C.F.R. Datum Elev. 778.09 in Sept. 1973)

ALBERT A. WEBB ASSOCIATES CIVIL ENGINEERS RIVERSIDE, CALIFORNIA APPROVED BY: <i>[Signature]</i> DATE: 12-15-74 R.E. No. 16056 W.O. 74-212 FOR: Andrews Development F.B. 1031	DESIGNED BY: <i>[Signature]</i> DRAWN BY: <i>[Signature]</i> CHECKED BY: <i>[Signature]</i>	APPROVED BY: <i>[Signature]</i> DATE: 12-9-74 CHIEF WATER UTILITY ENGINEER	*AS BUILT 8-76 KPT	ACCOUNT No. DRAWING NUMBER S-989
		CITY OF RIVERSIDE, CALIFORNIA PUBLIC WORKS DEPARTMENT APPROVED BY: <i>[Signature]</i> DATE: 12-24-74 CHIEF PUB. WKS. ENGR.	SEWER PLAN AND PROFILE PRESIDIO CIRCLE TRACT 5522-1	SHEET 2 OF 2 74-212-B