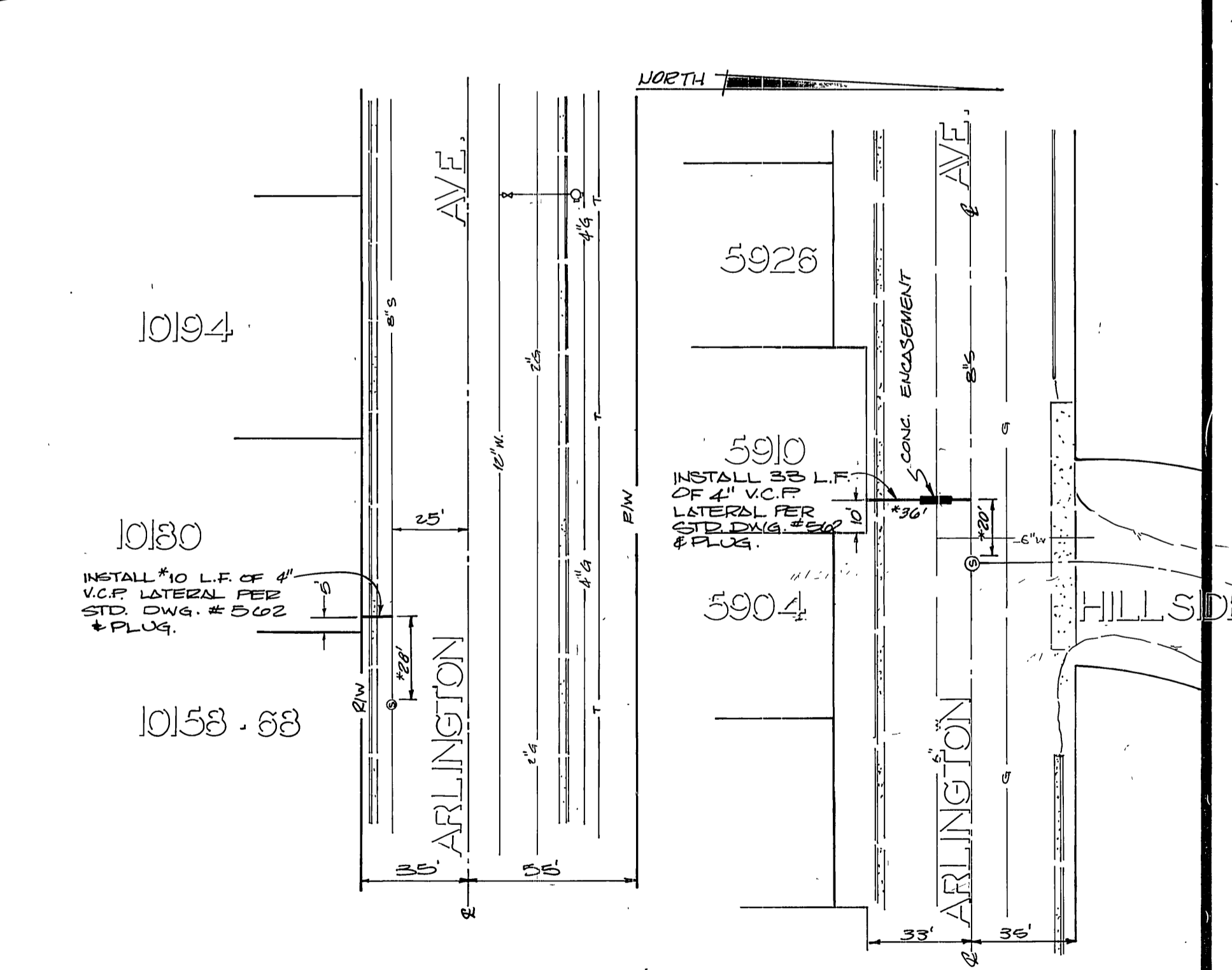
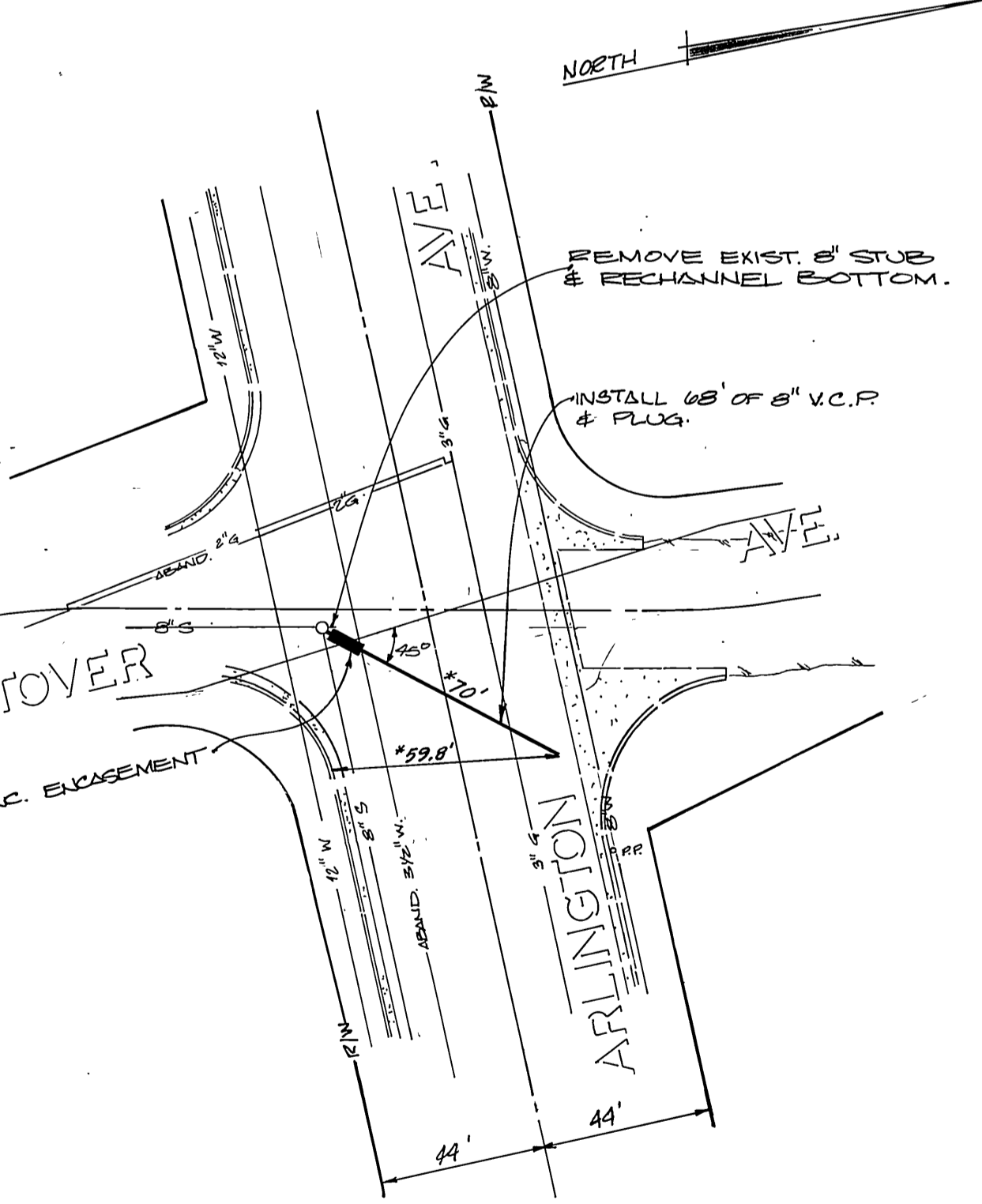
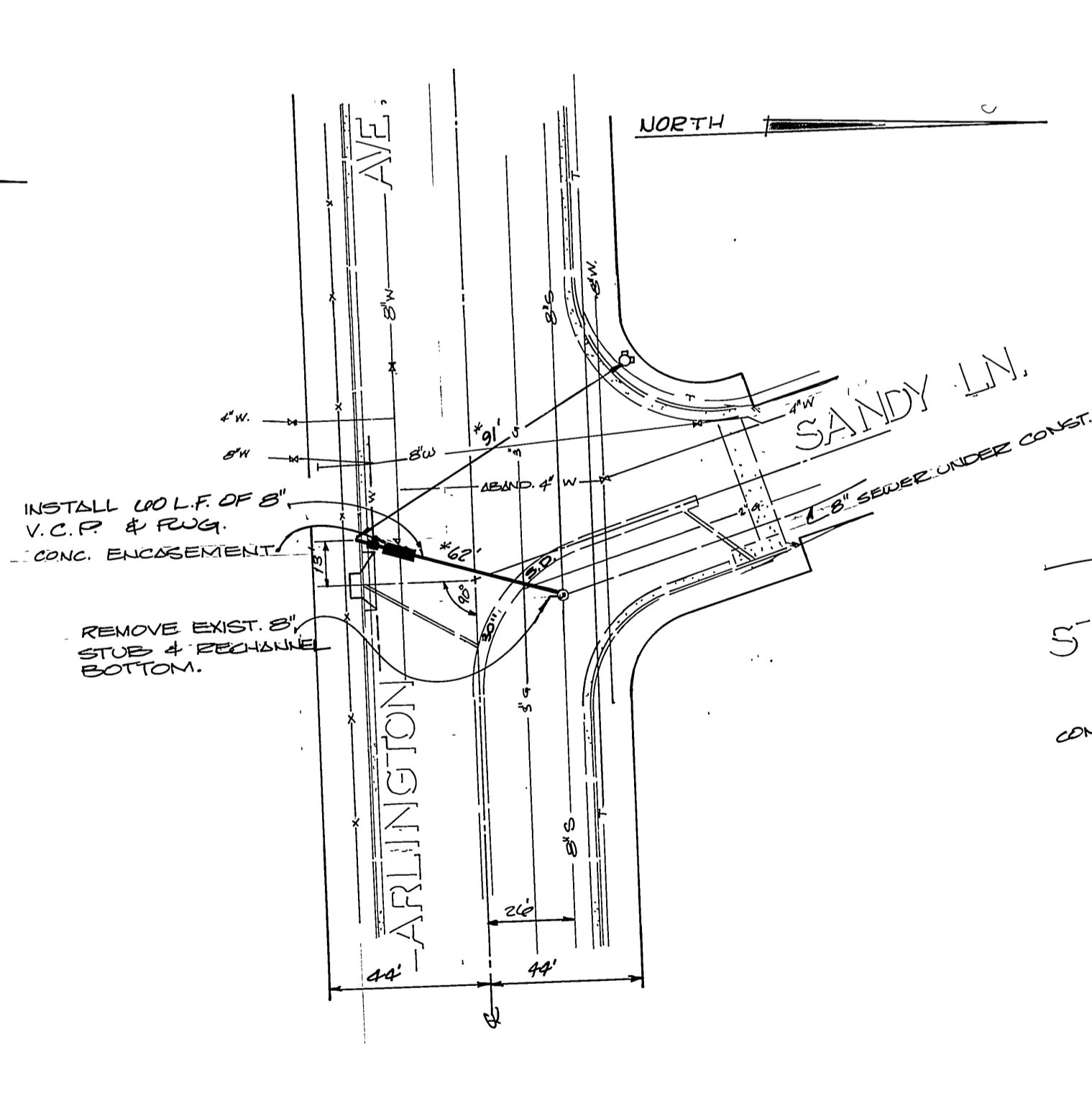
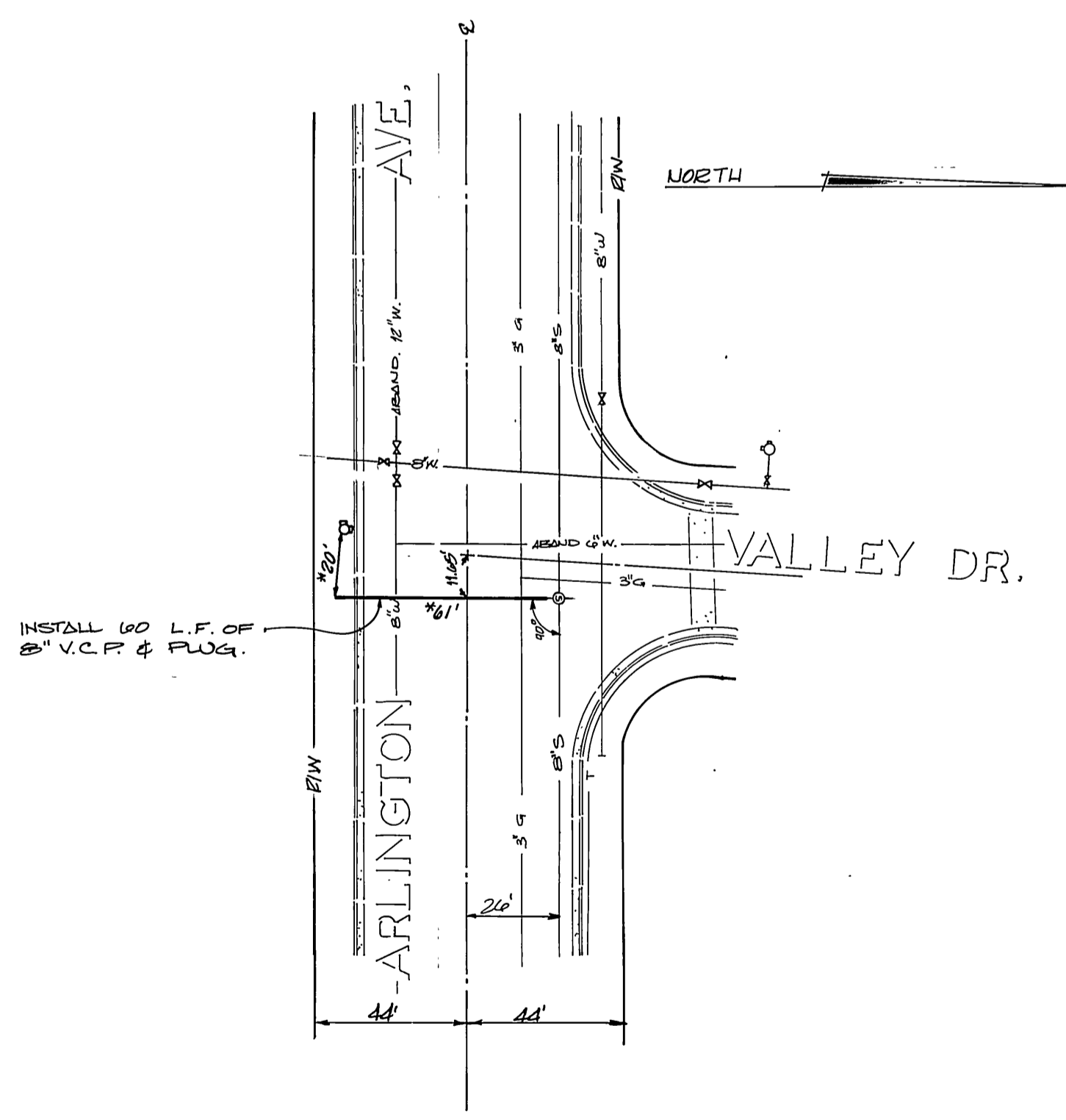


- GENERAL CONSTRUCTION NOTES**
1. CONSTRUCTION SHALL BE IN ACCORDANCE WITH STANDARD SPECIFICATIONS FOR PUBLIC WORKS CONSTRUCTION, 1973 EDITION & CITY OF RIVERSIDE STD. DWGS.
 2. WHERE THE PROPOSED SEWER CROSSES A WATER MAIN, THE CONTRACTOR SHALL ENCASE THE SEWER MAIN PER STD. DWG. CWO-023, TYPE C.
 3. CONTRACTOR SHALL RESTORE AT HIS OWN EXPENSE ANY CURBS AND GUTTERS UTILITIES, OR OTHER IMPROVEMENTS DAMAGED BY CONSTRUCTION.
 4. EXACT DEPTH OF UNDERGROUND UTILITIES MARKED 'N' ARE UNKNOWN. THE LOCATIONS AND DEPTHS SHOWN ON THE PLAN ARE FROM UTILITY RECORDS. THE CONTRACTOR IS REQUIRED TO TAKE THE PRECAUTIONARY MEASURES TO LOCATE AND PROTECT ALL UNDERGROUND FACILITIES.
 5. BEDDING SHALL BE PER STD. DWG. 402, CASE I.
 6. BACKFILL AND RESURFACING SHALL BE PER STD. DWG. 403.



APPROVED BY *[Signature]* 3/15/75
 APPROVED BY P.U.D.
 WATER DIVISION

MARK	REVISIONS	APPR. DATE

CITY OF RIVERSIDE
PUBLIC WORKS DEPARTMENT

APPROVED BY *[Signature]* 3/12
 PRINCIPAL ENGINEER
 PARK DEPARTMENT
 TRAFFIC DIVISION
 CHIEF P. W. ENGINEER

DATE: 3/21/75

ARLINGTON AVE.
SEWER CROSSINGS

APPROVED BY *[Signature]*
 PUBLIC WORKS DIRECTOR

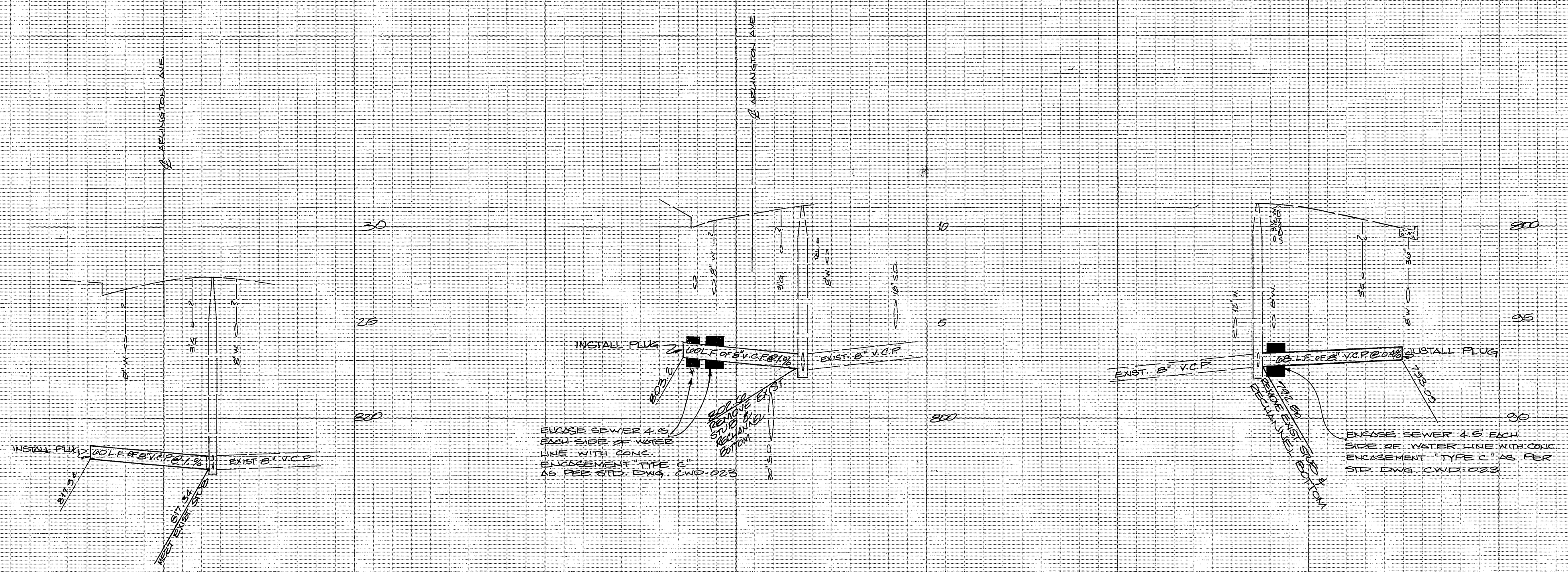
DATE: 3/21/75

INDEXED R.R.
 ACCOUNT NO. 32 STT-300
 S.991
 SHEET 1 OF 2
 FILE NO.

*AS BUILT 8-76 MPT

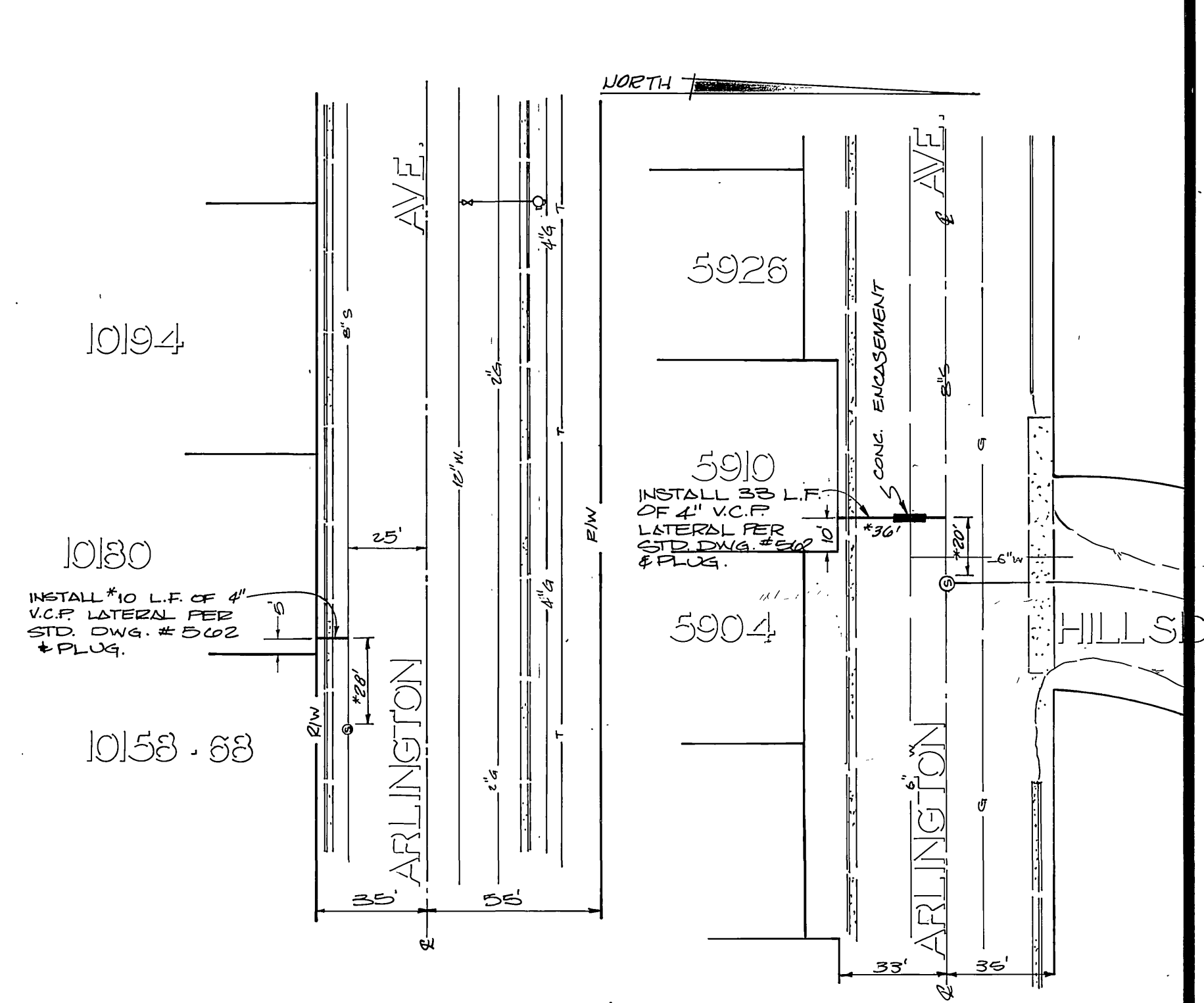
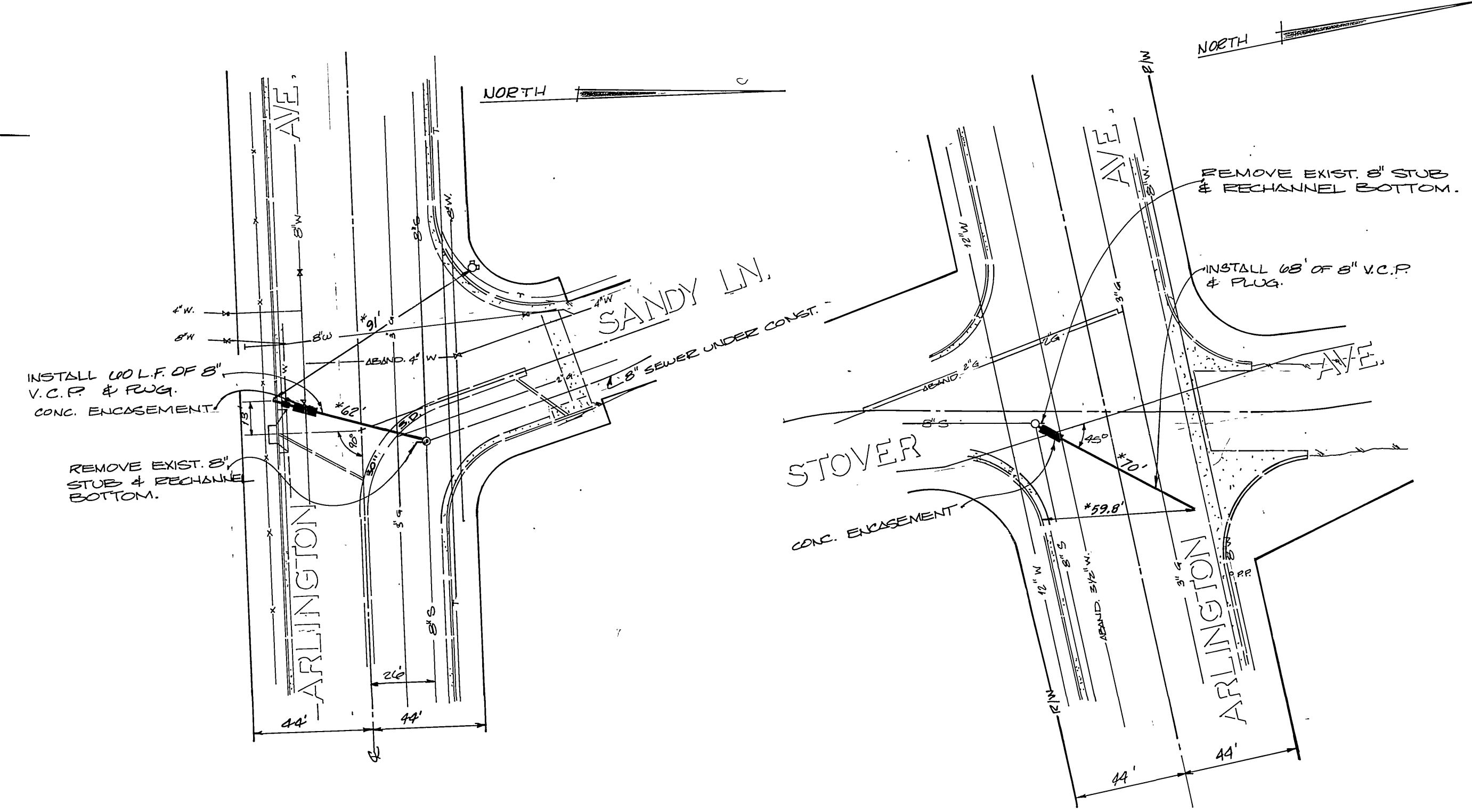
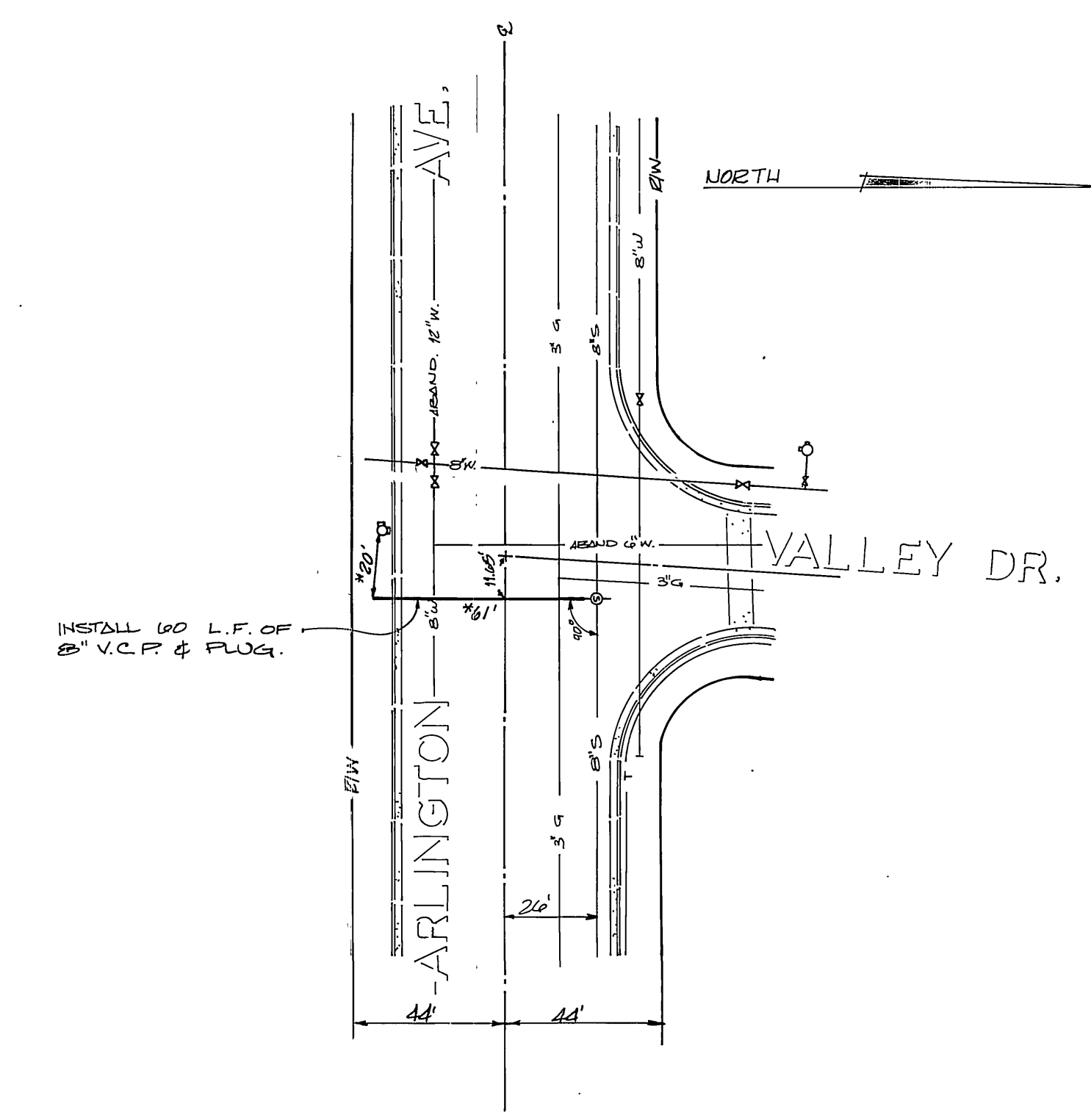
© VALLEY DR, SANDY LN, SEWER AVE, HAROLD ST,
 VAN BUREN BLVD, PEGASUS DR, 10180 AND
 10194 ARRLINGTON AVE.

HORIZ. SCALE: 1" = 40'
 VERT. SCALE: 1" = 4'



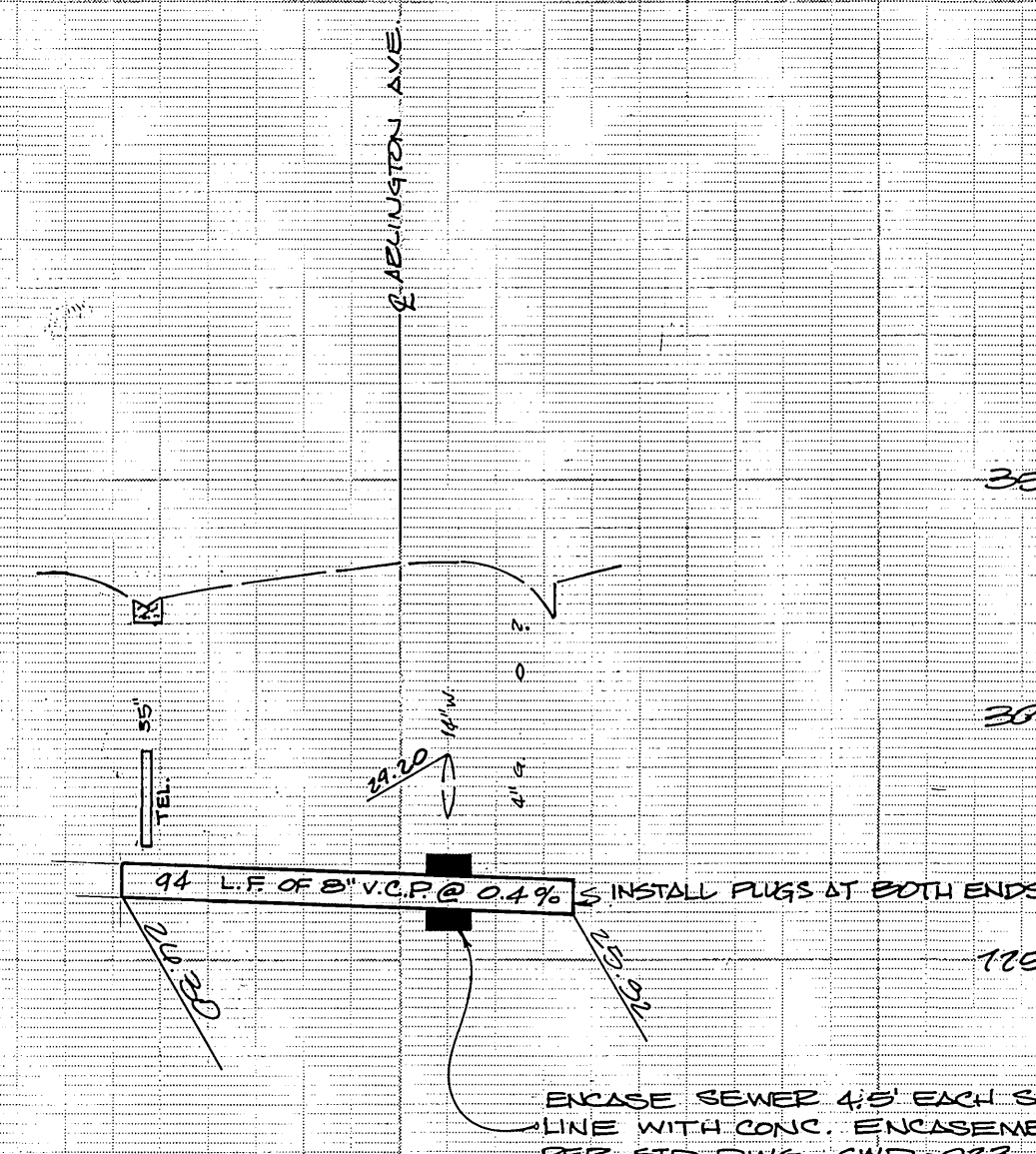
GENERAL CONSTRUCTION NOTES

1. CONSTRUCTION SHALL BE IN ACCORDANCE WITH STANDARD SPECIFICATIONS FOR PUBLIC WORKS CONSTRUCTION, 1975 EDITION & CITY OF RIVERSIDE STD. DWG. #5.
2. WHERE THE PROPOSED SEWER CROSSES A WATER MAIN, THE CONTRACTOR SHALL ENCASE THE SEWER MAIN PER STD. DWG. CWO-023, TYPE C.
3. CONTRACTOR SHALL RESTORE AT HIS OWN EXPENSE ANY CURBS AND GUTTERS, UTILITIES, OR OTHER IMPROVEMENTS DAMAGED BY CONSTRUCTION.
4. EXACT DEPTH OF UNDERGROUND UTILITIES MARKED "U" ARE UNKNOWN. THE CONTRACTOR IS REQUIRED TO TAKE DUE PRECAUTIONARY MEASURES TO LOCATE AND PROTECT ALL UNDERGROUND FACILITIES.
5. BEDDING SHALL BE PER STD. DWG. 402, CASE I.
6. BACKFILL AND RESURFACING SHALL BE PER STD. DWG. 403.

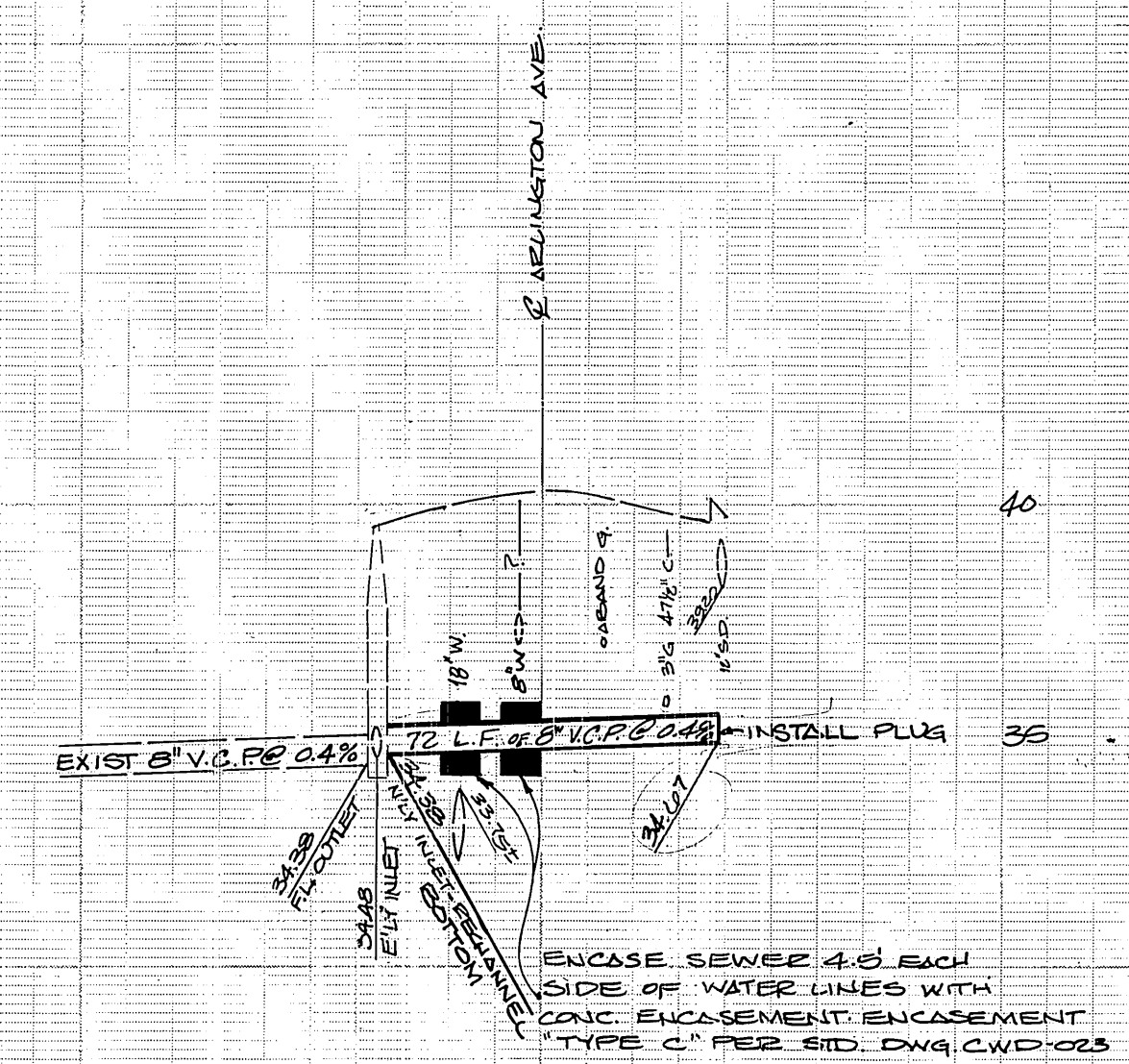
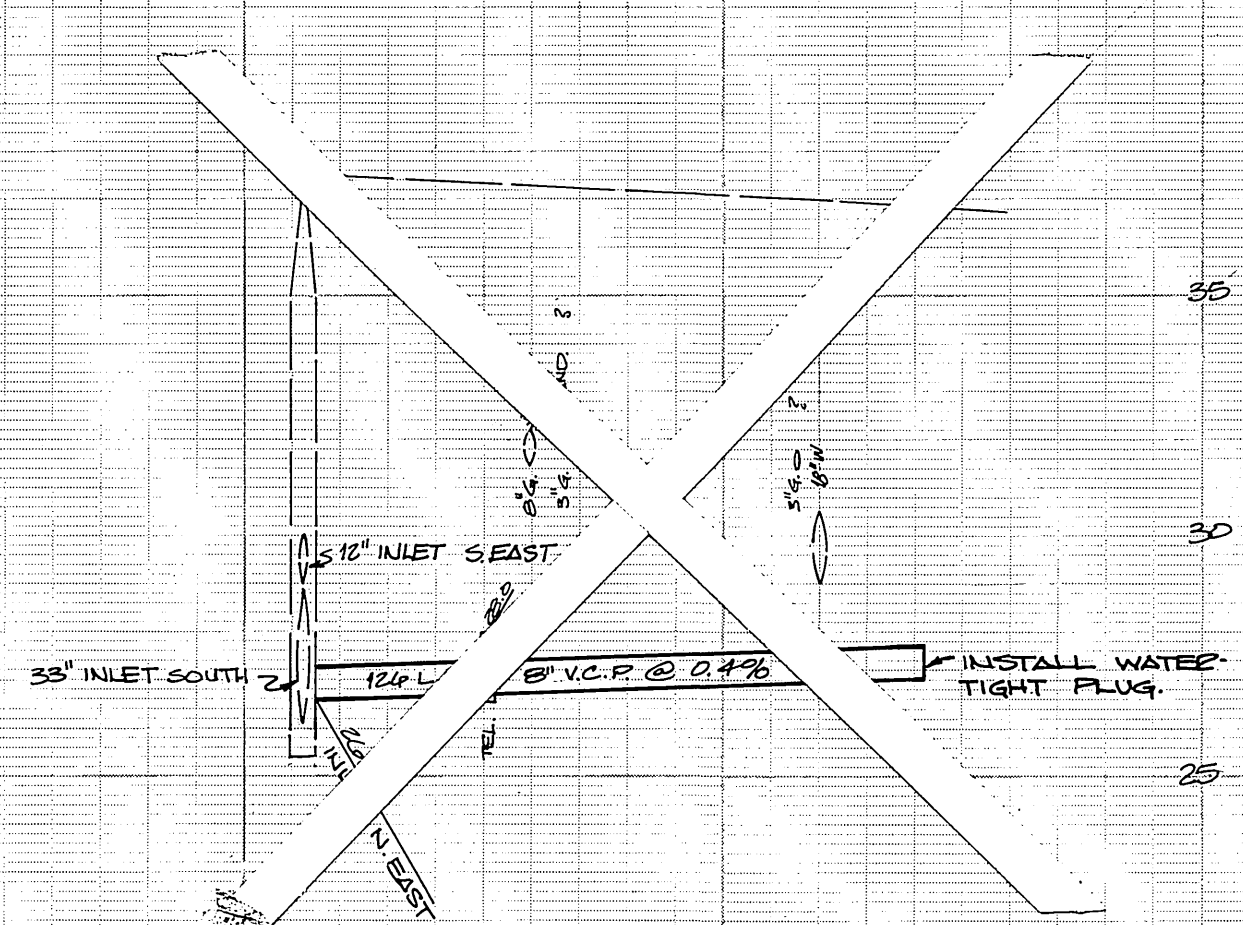


APPROVED BY P.W.D.
WATER DIVISION

CITY OF RIVERSIDE PUBLIC WORKS DEPARTMENT			ARLINGTON AVE. SEWER CROSSINGS		INDEXED RR ACCOUNT NO. 32 517-566
APPROVED BY PRINCIPAL ENGINEER PARK DEPARTMENT TRAFFIC DIVISION CHIEF P.W. ENGINEER	APPROVED BY <i>William D. ...</i> PUBLIC WORKS DIRECTOR	DATE 3/21/75	DESIGNED BY <i>Sch</i> DRAWN BY <i>GLK</i> CHECKED BY <i>MEAS</i>		S.991 SHEET 1 OF 2 FILE NO.
			*AS BUILT 8-76 HPT		
			DESIGNED BY <i>Sch</i> DRAWN BY <i>GLK</i> CHECKED BY <i>MEAS</i>		
			HORIZ. SCALE: 1" = 40'		
			VERT. SCALE: 1" = 4'		

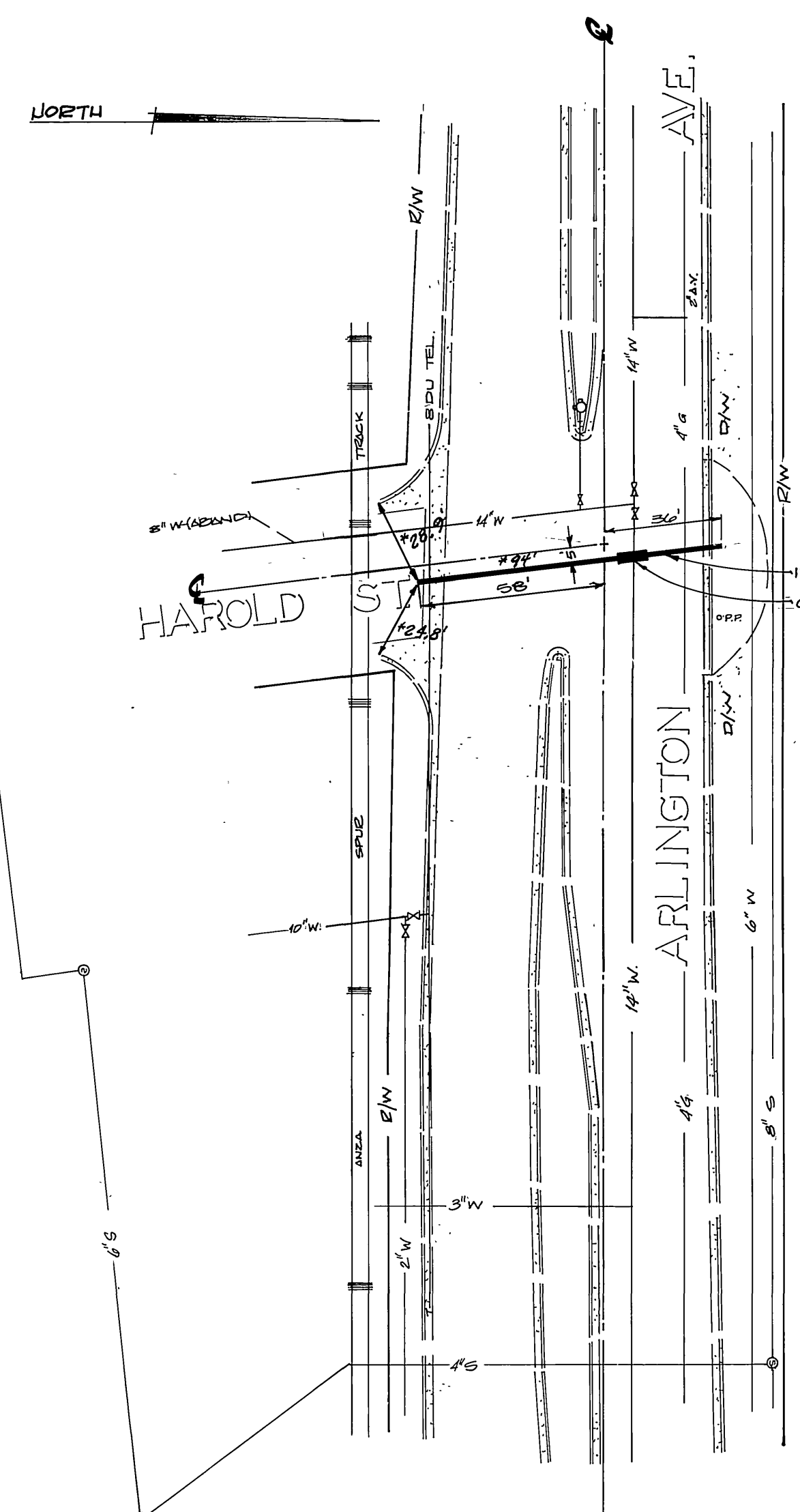


ENCASE SEWER 4'0\"/>

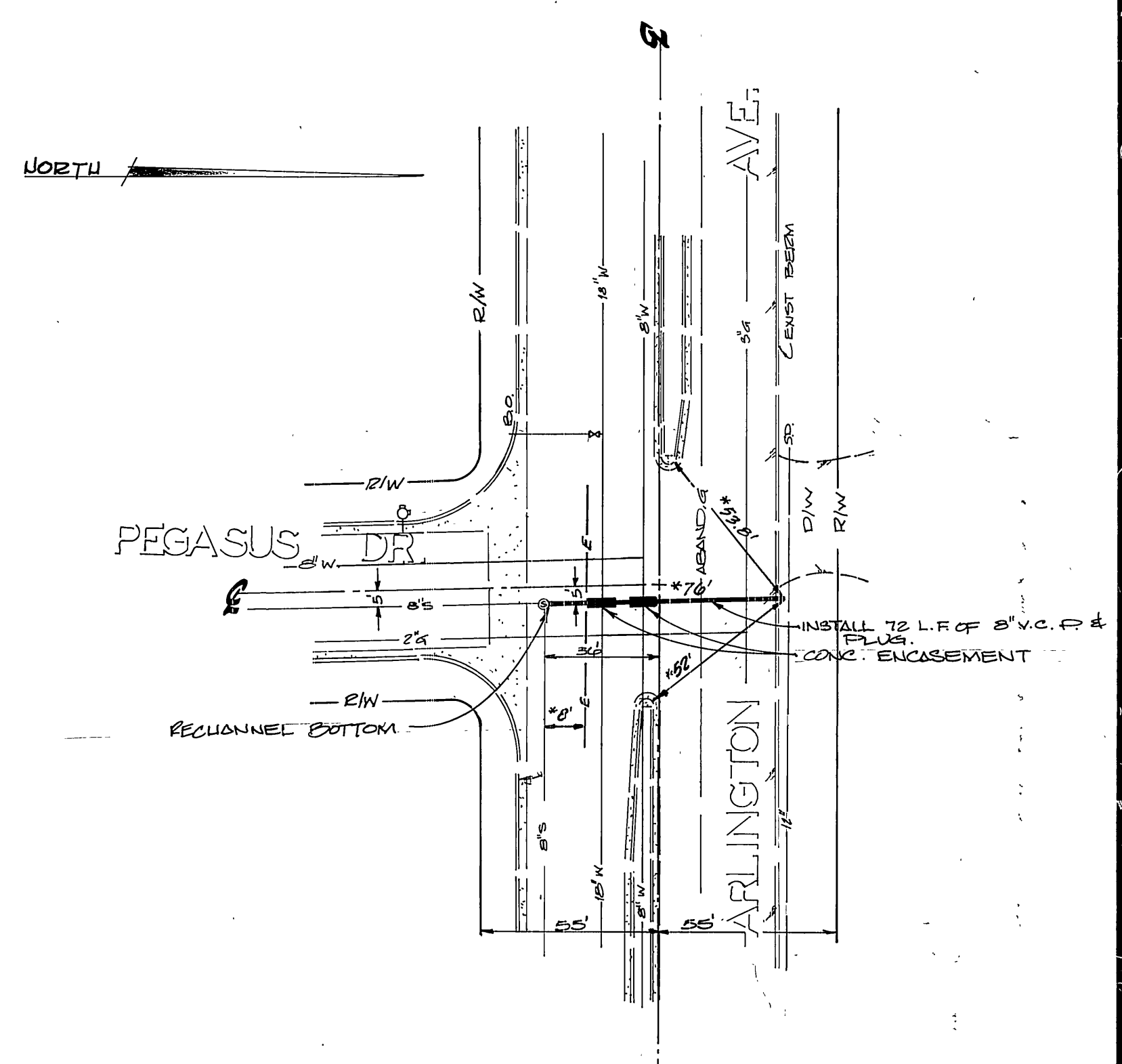
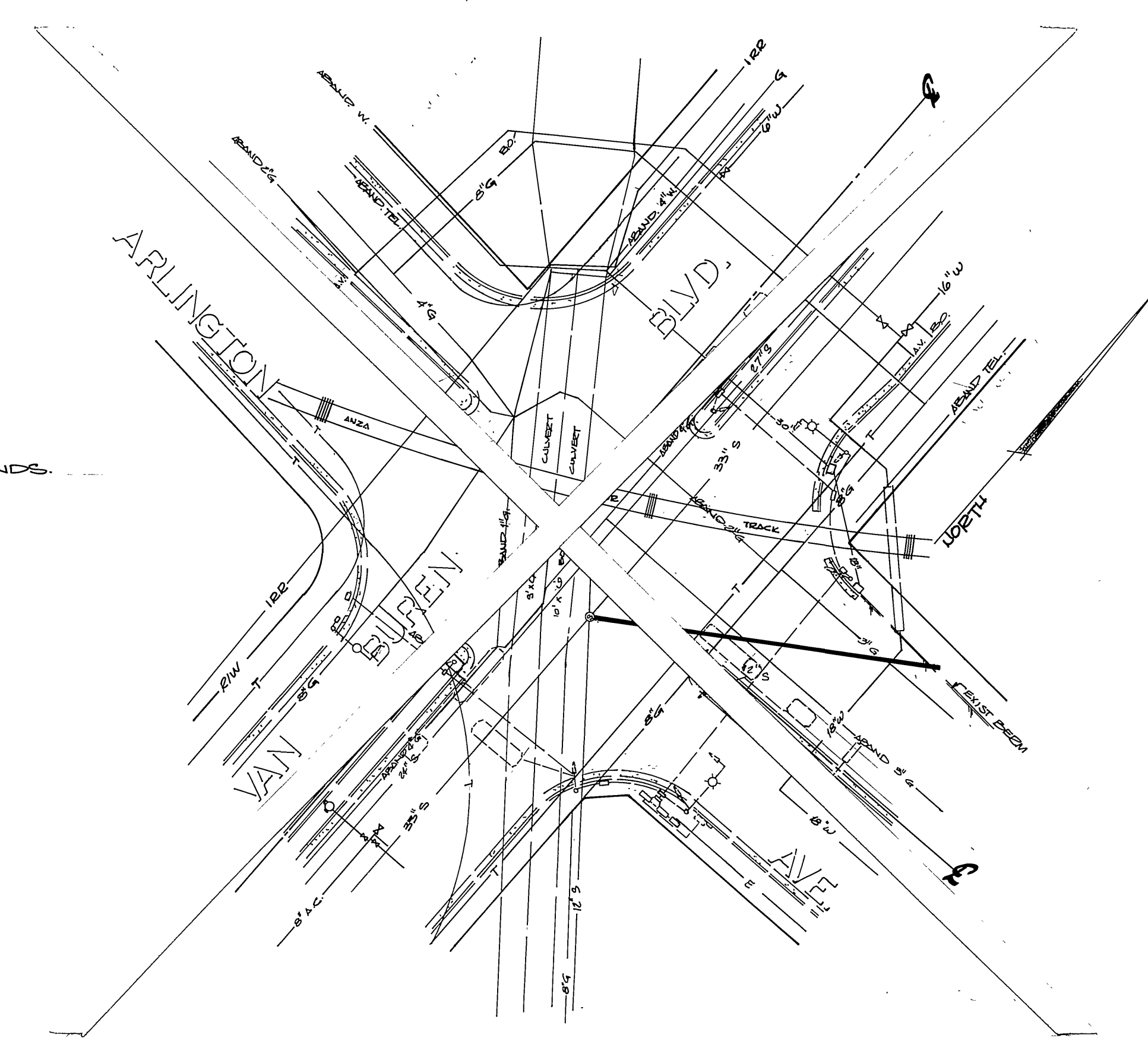


ENCASE SEWER 4'0\"/>

B.M. 63F
 ELEV. 754.33 F.B. 982-60
 BRASS DISK STAMPED 63F IN
 MON. VAULT @ E. PI. OF
 ARLINGTON & VAN EUBEN.



INSTALL 94 L.F. OF 8\"/>



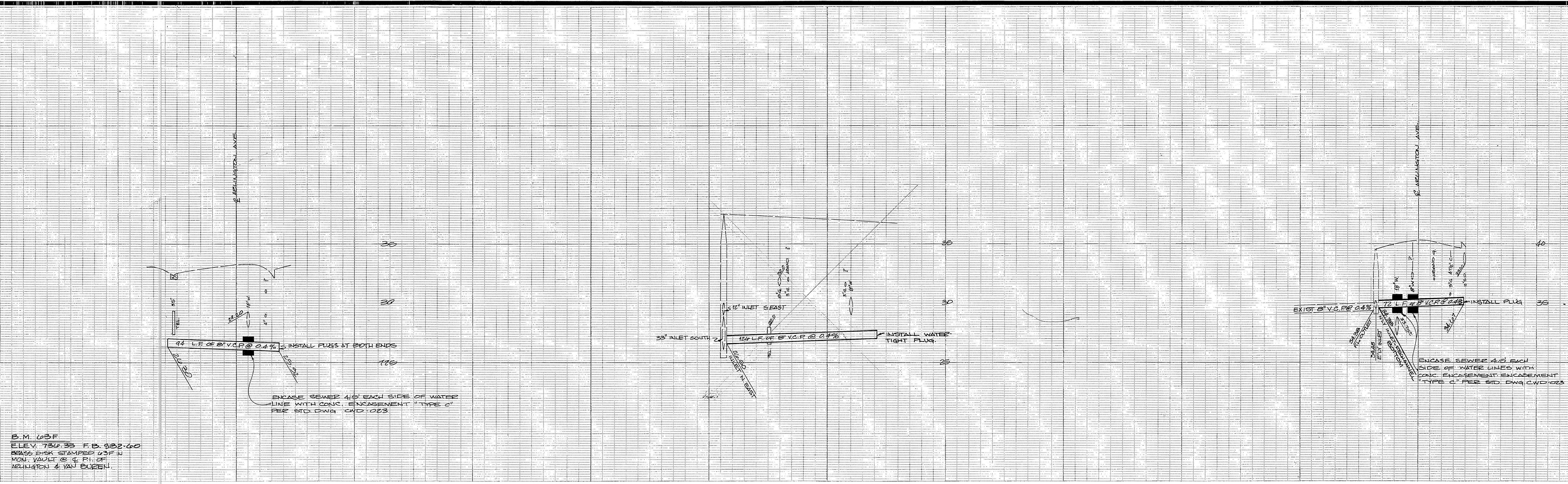
INSTALL 72 L.F. OF 8\"/>

APPROVED BY P.O.D.
 WATER DIVISION

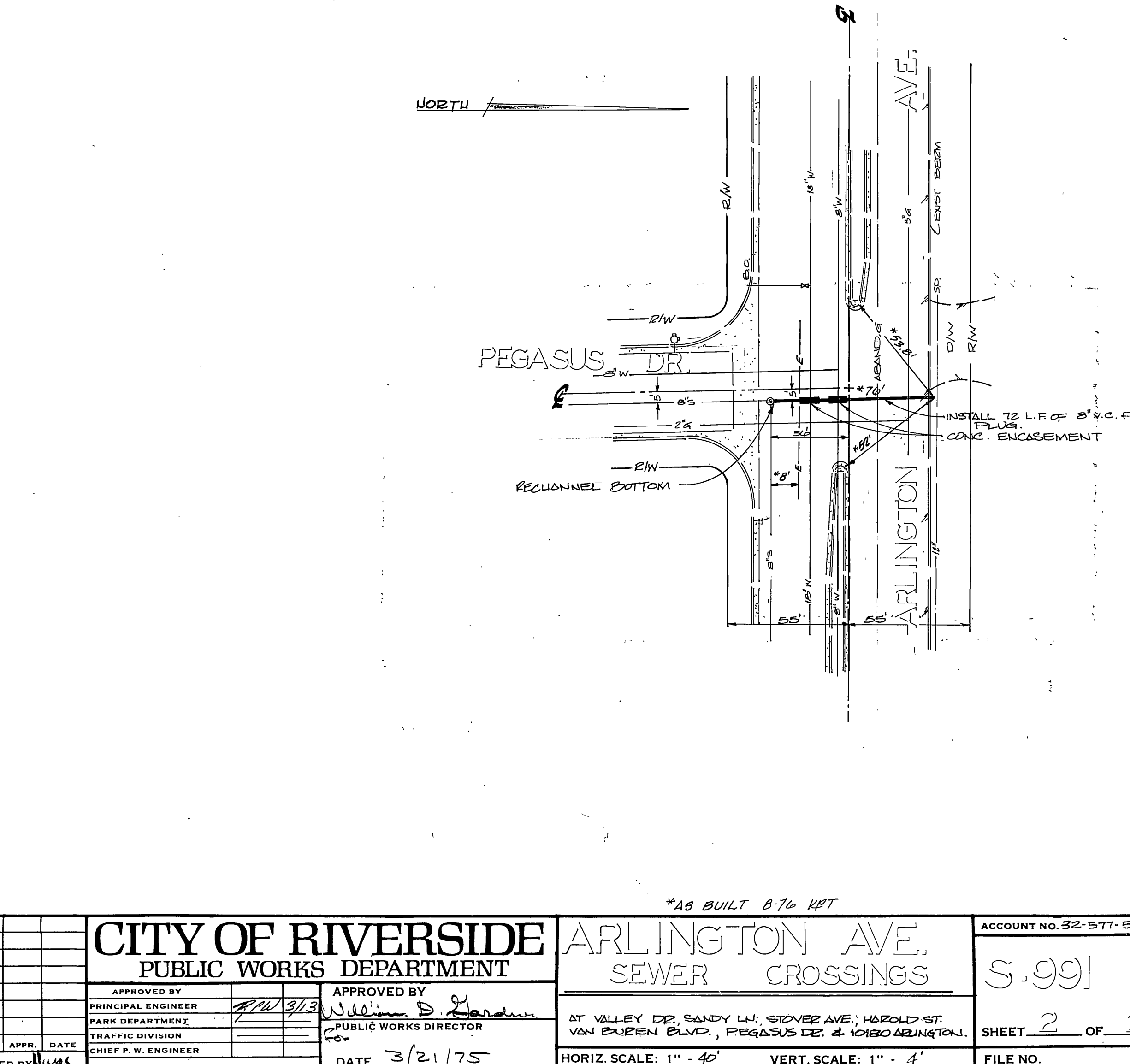
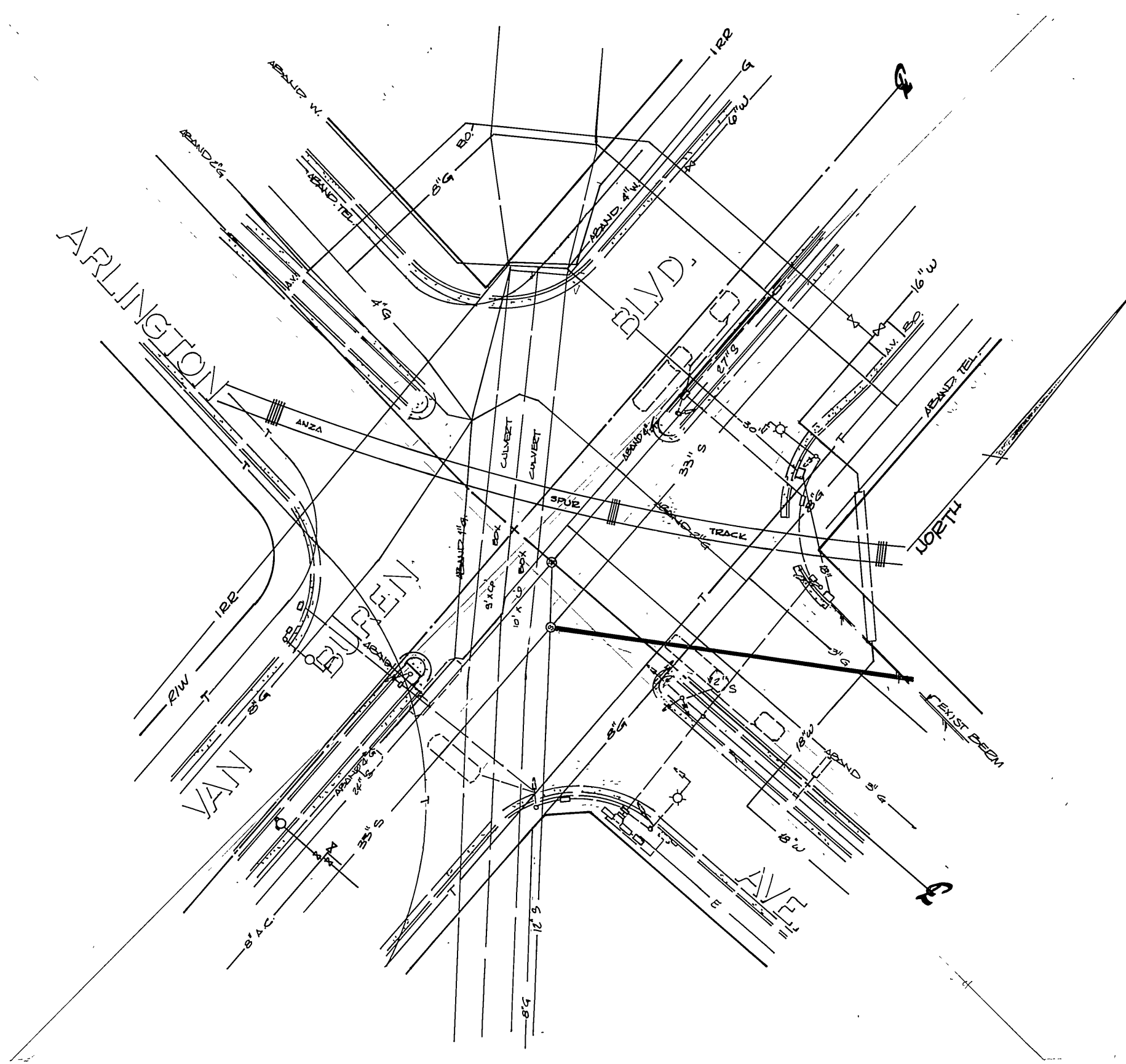
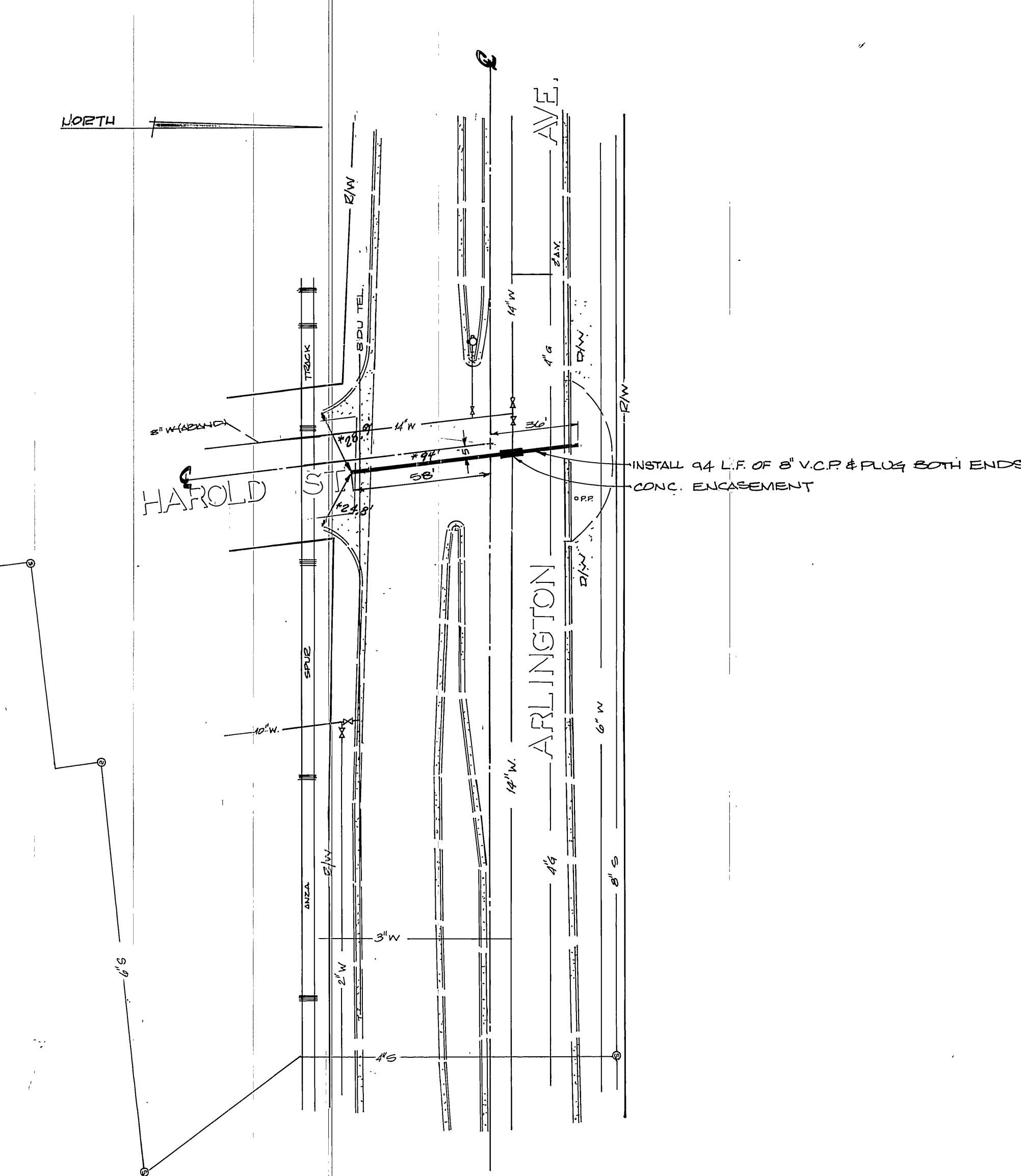
MARK	REVISIONS	APPR.	DATE

CITY OF RIVERSIDE		PUBLIC WORKS DEPARTMENT	
APPROVED BY	PRINCIPAL ENGINEER	APPROVED BY	PUBLIC WORKS DIRECTOR
	<i>[Signature]</i>		<i>[Signature]</i>
DESIGNED BY	DRAWN BY	CHECKED BY	DATE
			3/21/75

ARLINGTON AVE.		ACCOUNT NO. 32-577-5600
SEWER CROSSINGS		S. 991
AT VALLEY DR, SANDY LN, STOVER AVE, HAROLD ST, VAN EUBEN BLVD, PEGASUS DR & 1030 ARLINGTON.		SHEET 2 OF 2
HORIZ. SCALE: 1" = 40'	VERT. SCALE: 1" = 4'	FILE NO.



B.M. 03F
 ELEV. 784.33 F.B. 882-60
 BEASS DISK STAMPED 03F N
 MON. VAULT @ 4' P.I. OF
 ARLINGTON & VAN BUREN



APPROVED BY P.D.
 WATER DIVISION
 DATE 4/25/75

MARK	REVISIONS	APPR. DATE

CITY OF RIVERSIDE
PUBLIC WORKS DEPARTMENT

APPROVED BY
 PRINCIPAL ENGINEER
 PARK DEPARTMENT
 TRAFFIC DIVISION
 CHIEF P.W. ENGINEER

APPROVED BY
 William D. Gordon
 PUBLIC WORKS DIRECTOR

DATE 3/21/75

ARLINGTON AVE.
SEWER CROSSINGS

AT VALLEY DR, SANDY LN, BOWER AVE, HAROLD ST,
 VAN BUREN BLVD, PEGASUS DR & 10180 ARLINGTON.

HORIZ. SCALE: 1" = 40'
 VERT. SCALE: 1" = 4'

ACCOUNT NO. 32-577-564
 S.991
 SHEET 2 OF 2
 FILE NO.