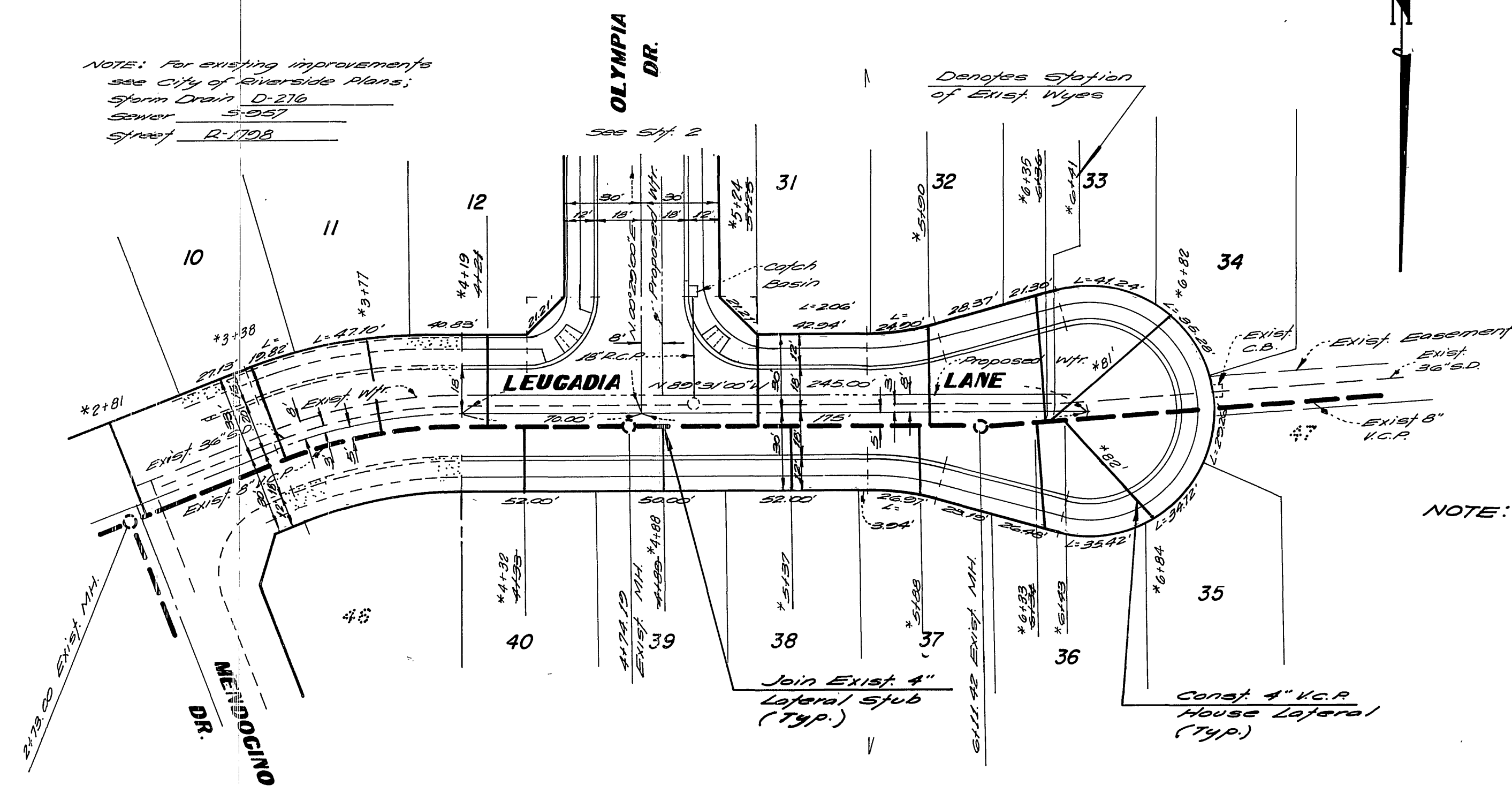


NOTE: For existing improvements see City of Riverside Plans; Storm Drain D-216 Sewer S-957 Street R-170A



NOTE: For location of sewer laterals for lots 5 thru 11 on Leucadia see City of Riverside Plan No. S-990

BENCH MARK

Rk. nail in Exist curb on Tyler St., on E Gaylord produced, per City of Riverside R.S. 706/1. Elevation: 778.21 (Adjusted to City of Riverside Datum Elevation: 778.05 in September 1975).

GENERAL NOTES

1. Construction shall be in accordance with the Standard Specifications for Public Works Construction, 1975 Edition, and the City of Riverside Standard Drawings.
2. It shall be the responsibility of the contractor to clear the Right of Way in accordance with the provisions of the law as it affects each utility, including irrigation lines and appurtenances and of no cost to the City.
3. Pipe shall be bedded per Case I, Standard Drawing No. 452, unless otherwise specified on plans.
4. Location of Existing wyes are shown with stations; modify to clear storm Drains directed in field; additional wyes to be determined at the direction of owner.
5. All stubs and laterals to be constructed in accordance with standard Drawing No. 562.
6. Manhole frames and covers to be set as noted in profile by sewer contractor after final paving of streets.
7. Laterals are to be 4" and extend to property line.
8. Prior to construction of sewer, contractor is to expose the existing sewer and contact the Engineer for verification of existing location and elevation.
9. Encase sewer 45' each side of proposed water main crossing per Public Utilities Drawing CWD 023, Type C.
10. A plug shall be installed and will remain in place where the new sewer connects with existing sewer until such time as new sewer is accepted by the City.

NOTICE TO CONTRACTOR

The existence and location of underground utility pipes or structures shown on these plans are obtained by a search of the available records. To the best of our knowledge, there are no existing utilities except as shown on these plans. The contractor is required to take due precautionary measures to protect the utility lines shown and any other lines not of record or not shown on these plans.

ALBERT A. WEBB ASSOCIATES
CIVIL ENGINEERS
RIVERSIDE, CALIFORNIA
APPROVED BY *L.A. Mancini* DATE 11-17-74
R.E. No. 18056

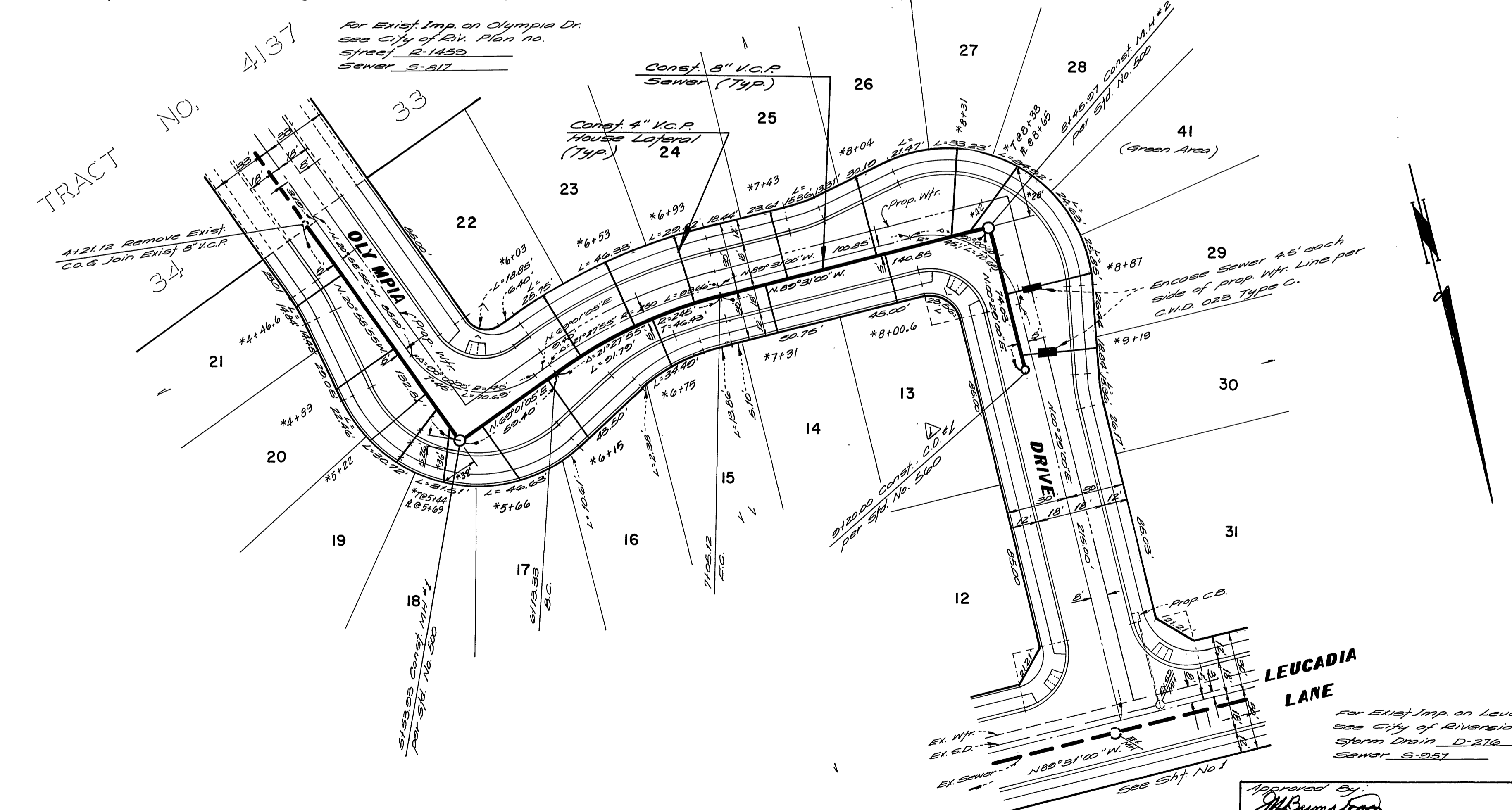
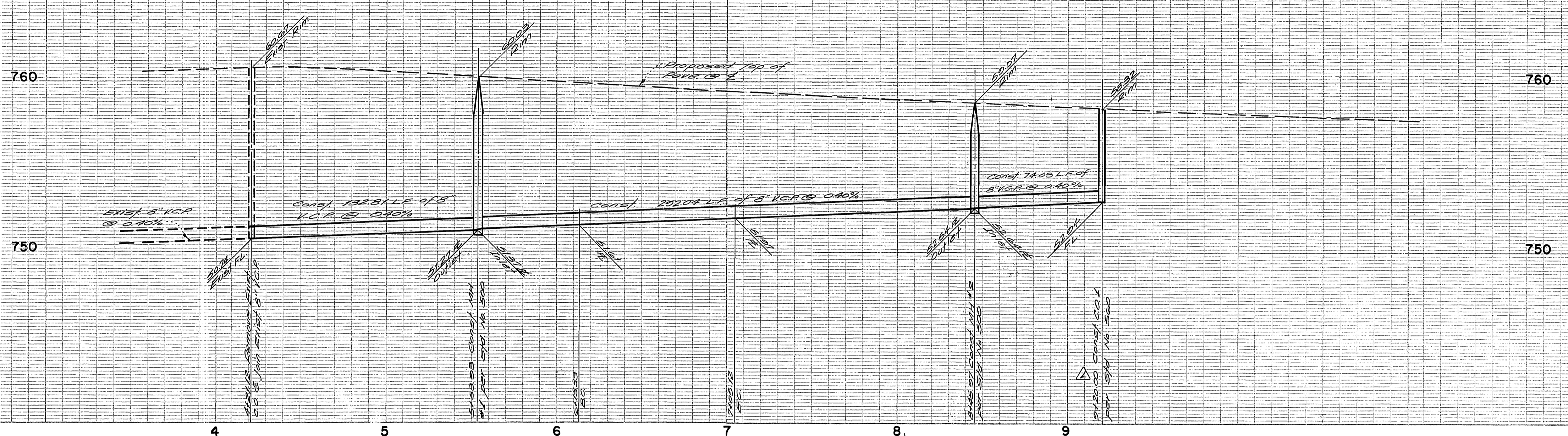
MARK	REVISIONS	APPR.	DATE

Approved *Alfredo J. ...* 1-25-75
CITY OF RIVERSIDE, CALIFORNIA
PUBLIC WORKS DEPARTMENT
APPROVED BY *[Signature]* DATE 2-19-75
PRINCIPAL ENGINEER
PARK DEPARTMENT
TRAFFIC DIVISION
CHIEF PUB. WORKS ENGR. *[Signature]*

*AS BUILT 8-76 KPT
SEWER PLAN AND PROFILE
LEUCADIA LANE
TRACT NO. 5522
SCALE: Horiz. 1"=40' Vert. 1"=4'

ACCOUNT No. DRAWING NUMBER
S-995
SHEET 1 OF 3
73-243-B

S-995



Note: For General Notes See Sheet No. 1

BENCH MARK
 PK nail in Edge Curb on Tyler St.,
 on 2' gravel produced, per City
 of Riverside R.B. 704/1
 elev. 778.21
 (Adjust to 5/16 Datum Elev. 778.00
 in Sept. 1913.)

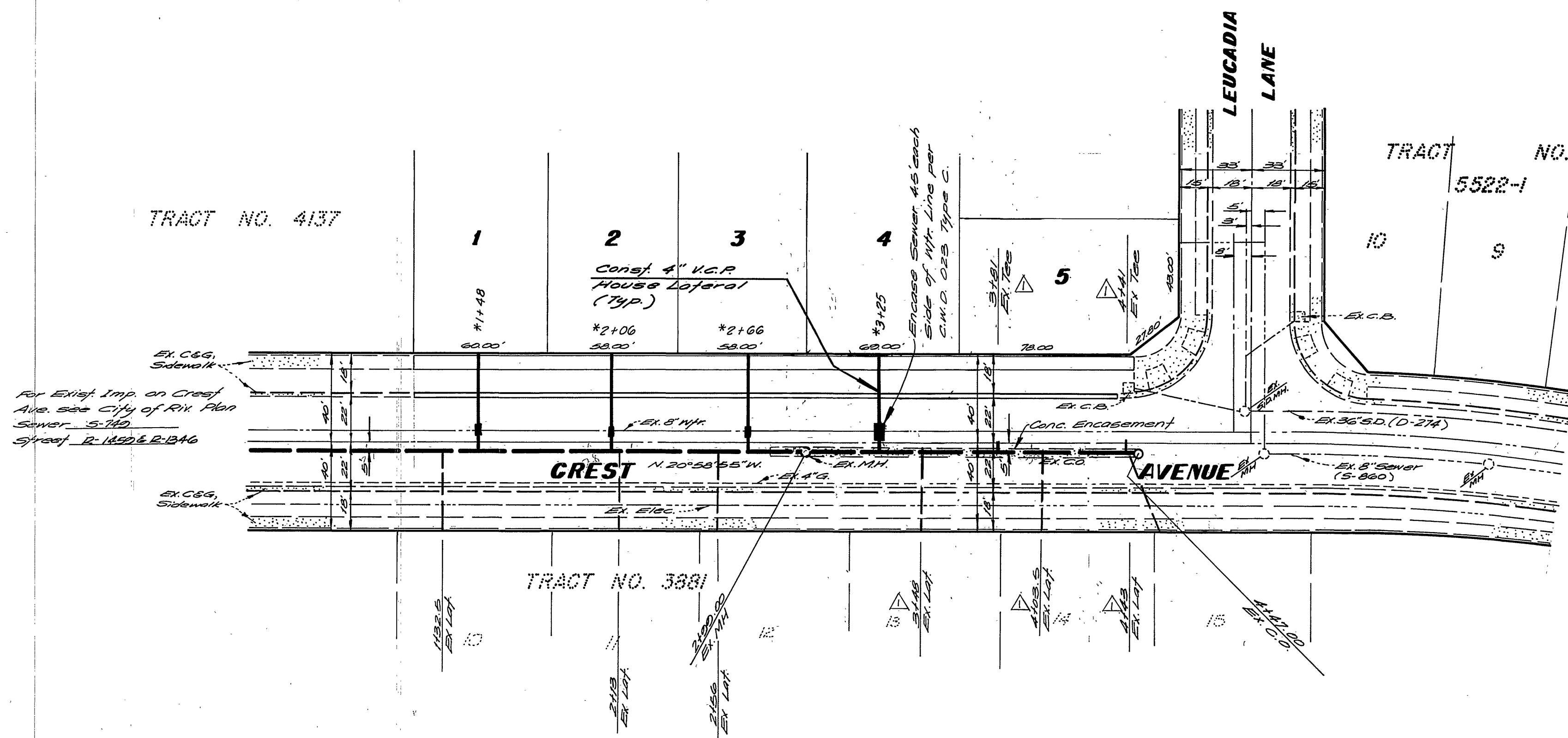
ALBERT A. WEBB ASSOCIATES
 CIVIL ENGINEERS
 RIVERSIDE, CALIFORNIA
 APPROVED BY *[Signature]* DATE 11-19-74
 R.E. No. 18052

DESIGNED BY *[Signature]* DRAWN BY *[Signature]* CHECKED BY *[Signature]*

Approved By: *[Signature]*
 Chief Water Utility Engineer
CITY OF RIVERSIDE, CALIFORNIA
 PUBLIC WORKS DEPARTMENT
 APPROVED BY *[Signature]* DATE 1-25-75
 PRINCIPAL ENGINEER
 PARK DEPARTMENT
 TRAFFIC DIVISION
 CHIEF PUB. WKS. ENGR.
 DATE 2-20-75

*AS BUILT 8-76 KPT

ACCOUNT No. **S-995**
 DRAWING NUMBER
SEWER PLAN AND PROFILE
OLYMPIA DRIVE
TRACT NO. 5522
 SHEET **2** OF **3**
 SCALE: Horiz. 1"=40' Vert. 1"=4'



Note: For General Notes see Sheet 1.

BENCH MARK
 PK. nail in East Curb on Tyler St, on E Gaylord produced, per City of Riverside F.B. 106/1. Elev. - 718.21 (Adjusted to 1/2 Datum elev. 718.00 in Sept. 1973.)

ALBERT A. WEBB ASSOCIATES CIVIL ENGINEERS RIVERSIDE, CALIFORNIA APPROVED BY: <i>L.A. Mansueti</i> DATE: 1-17-74 R.E. No. 12092		Approved By: <i>J.H. Burnshead</i> 1-25-75 Chief Water Utility Engineer Date	
CITY OF RIVERSIDE, CALIFORNIA PUBLIC WORKS DEPARTMENT APPROVED BY: <i>[Signature]</i> DATE: 2-20-75 PRINCIPAL ENGINEER PARK DEPARTMENT TRAFFIC DIVISION CHIEF PUB. WKS. ENGR.		APPROVED BY: <i>[Signature]</i> DATE: 2-20-75 DIRECTOR OF PUBLIC WORKS	
W.O. 29-243 FOR Andrews Development F.B. 1031 DESIGNED BY: <i>RLT</i> DRAWN BY: <i>RLT</i> CHECKED BY: <i>LEDDAU</i>		MARK REVISIONS APPR. DATE [Blank] [Blank] [Blank] [Blank]	

*AS BUILT 8-76 KPT SEWER PLAN AND PROFILE CREST AVENUE TRACT NO. 5522		ACCOUNT No. DRAWING NUMBER S-995 SHEET 3 OF 3 73-243-B
SCALE: Horiz = 1"=40' Vert = 1"=4'		