

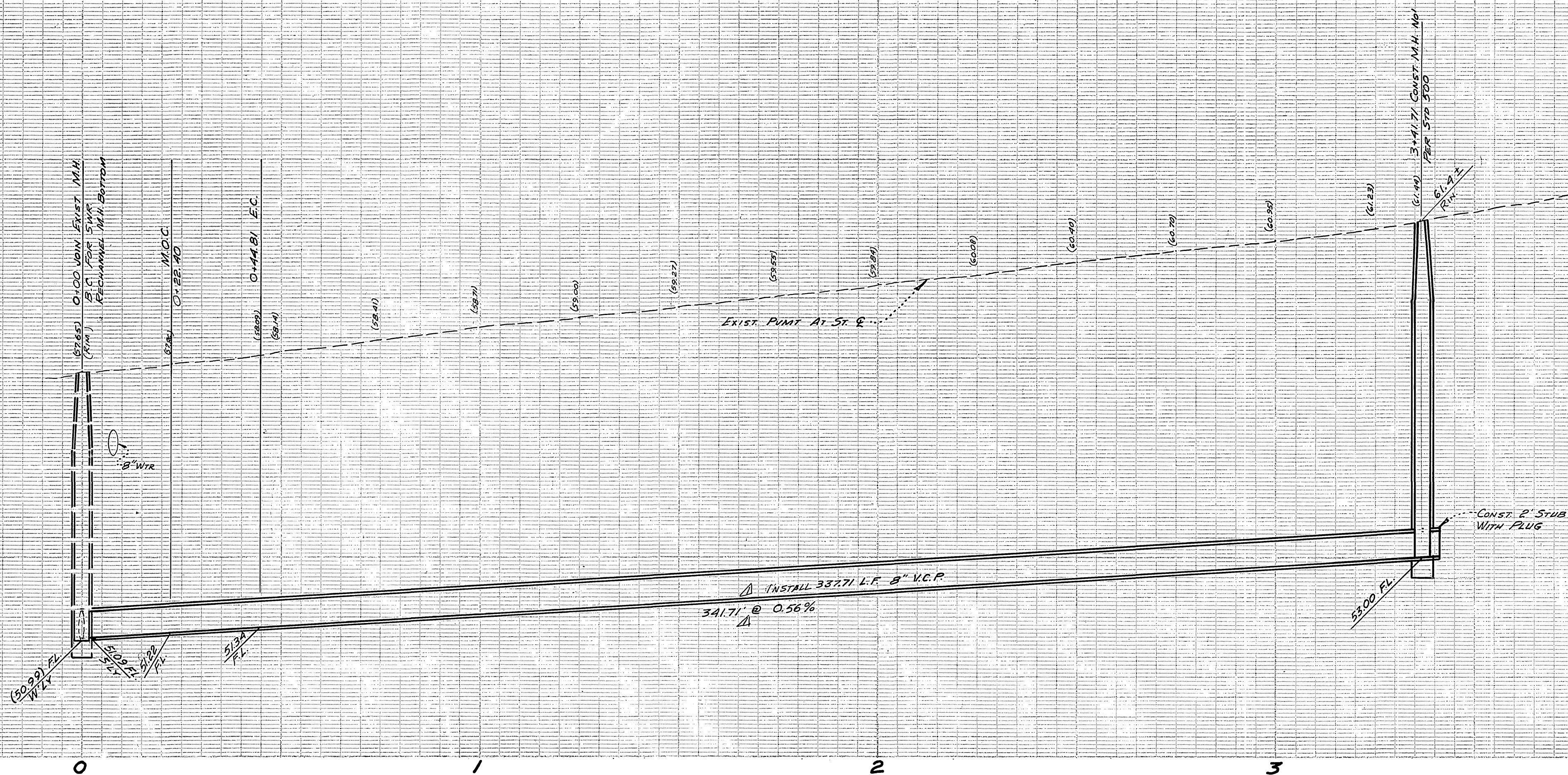
858

853

848

858

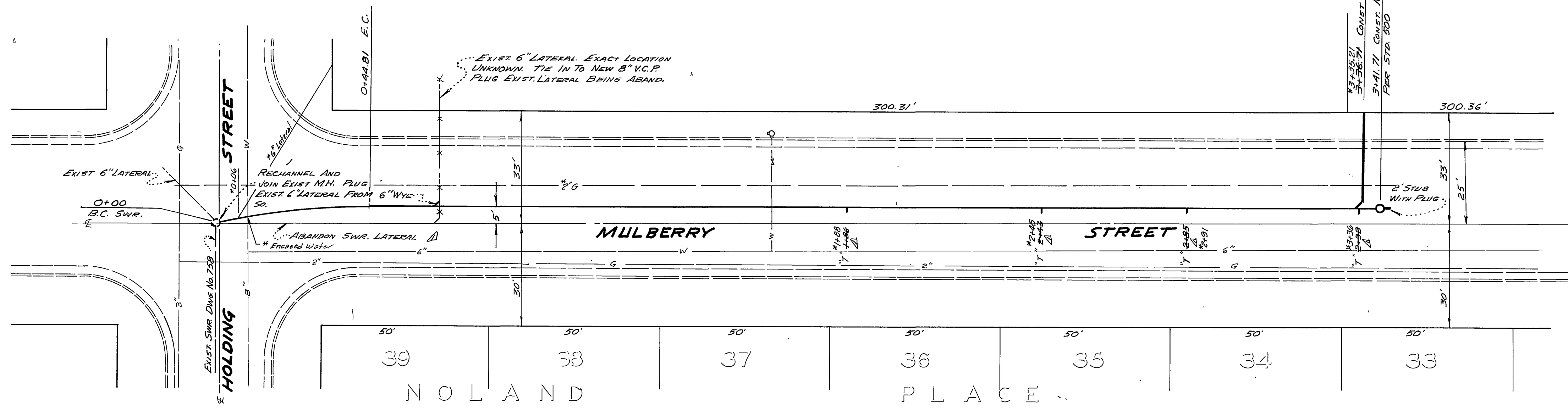
853



B.M.
 NAIL & L.P. IN WEST CURB MULBERRY
 60' NORTH OF R.R. YING SOUTH
 OF POPULAR ST (STATE HWY)
 EL. 871.559

S
C
C
A

- GENERAL NOTES**
1. CONSTRUCTION SHALL BE IN ACCORDANCE WITH THE CITY OF RIVERSIDE, DEPT. OF PUBLIC WORKS STANDARDS AND THE STANDARD SPECIFICATIONS FOR PUBLIC WORKS CONSTRUCTION 1973 EDITION.
 2. THE FOLLOWING STANDARD DRAWINGS APPLY:
 452 PIPE BEDDING
 453 TRENCH BACKFILL
 500 MANHOLES
 562 SEWER LATERAL



SEWER S CURVE DATA
 R = 200.00'
 Δ = 12° 50' 19"
 L = 44.81'
 T = 22.50'

*AS BUILT 8-76 KBT

APPROVED BY
[Signature]
 CHIEF UTIL. ENGR. 2/10/75

J. F. DAVIDSON ASSOCIATES
 CIVIL ENGINEERS - SURVEYORS - PLANNERS
 RIVERSIDE, CALIFORNIA
 APPROVED BY *[Signature]* DATE 2-5-75
 R.E. No. 136391
 W.O. 4376 FOR WALLING F.B. 07/73

MARK	REVISIONS	DATE	APPR.

CITY OF RIVERSIDE, CALIFORNIA
 DEPARTMENT OF PUBLIC WORKS
 APPROVED BY *[Signature]* DATE 2/10/75
 PRINCIPAL ENGINEER
 PARK DEPARTMENT
 TRAFFIC DIVISION
 CHIEF P. W. ENGR. DATE 2/10/75

SEWER PLAN AND PROFILE
 MULBERRY STREET
 SEWER EXTENSION
 FROM HOLDING STREET TO 341 1/2 SOUTHERLY

PROJECT NO. S-996
 SHEET 1 OF 1
 FILE NO. 4483

HORIZ. SCALE: 1" = 20' VERT. SCALE: 1" = 2'